

2200  
2250  
2300  
2350  
2400

following:

Miss	2286	-987
Kinderhook	2628	-1329
Hunton	2771	-1472
Maq	2813	-1514
Viola	2880	-1581
Simp. SD	3002	-1703
Arbuckle	3052	-1753
RTD		
LTD	3110	-1811

Sh: blk, carb, few pcs pyrite

Sh: drk gry-blk, carb, fissile, pyrite, scatt ls

Sh: blk, carb, blk, few pcs ss, vry fn grn

**Mississippian 2285' (-986)**

Dolo: off wh-lt gry, fn xln, DNS, poor int xln porosity

Dolo: tan-brn, fn-md xln, mostly DNS, vry hard, sl chalky

Dolo: off wh-tan, fn-sub xln, mostly DNS, hard, few pcs w/ poor int xln porosity, sl chalky, chert-off wh

Dolo: ala

Dolo: off wh-cream, fn xln, poor int xln porosity, chalky, scat chert

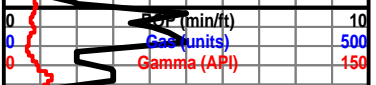
Sh: drk gry

Dolo: off wh-tan, fn-sub xln, mostly DNS, poor int xln porosity, hvy chert-off wh-crm

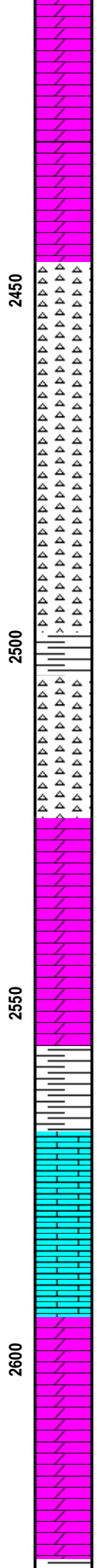
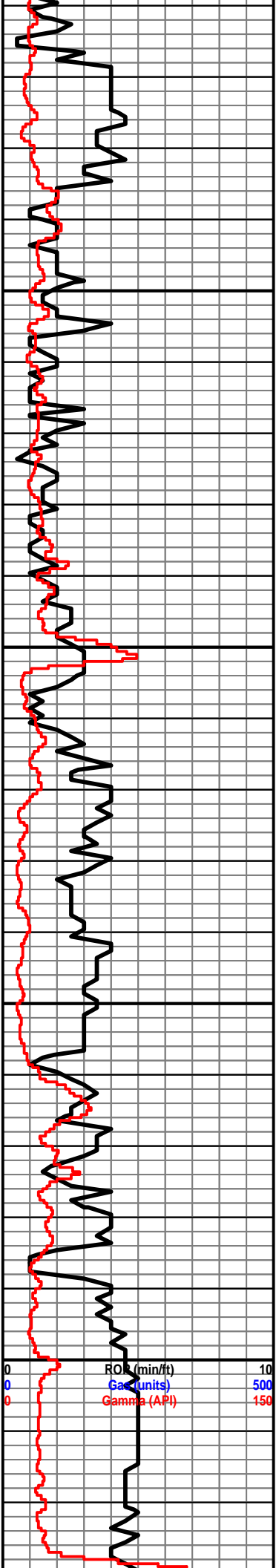
Dolo: tan-brn, fn xln, poor int xln porosity, chalky, hvy chert-off wh, NSFO

Sh: drk gry

Dolo: ala



2400



Dolo: tan, vry fn xln, mostly DNS, vry hard, sl chalky, chert-cream

Dolo: tan-lt brn, fn xln, poor int xln porosity, hvy chert-off wh-gry, scat pyrite, sl chalky, NSFO

Chert: tan-off wh, Dolo: ala

Chert: off wh, sharp, vry DNS

Chert: ala

Sh: drk gry, chalky, hvy chert-off wh-cream, vry DNS, sharp

Chert: off wh-cream, sharp, vry DNS, scat dolo and sh: ala

Dolo: off wh-cream, vry fn xln, poor int xln porosity, mostly DNS

Dolo: off wh-cream, fn xln, vry poor int xln porosity, scat fair sucrosic xln porosity, NSFO

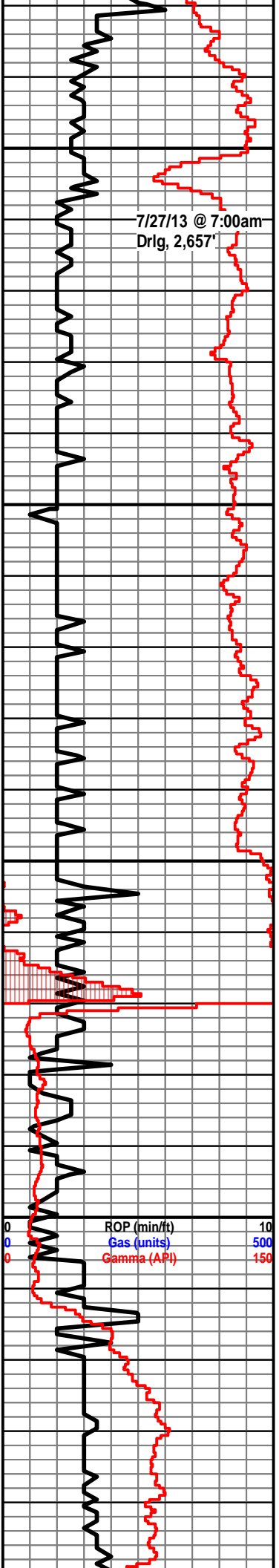
Sh: drk gry-blk, blk

Ls: tan-gry, fn xln, poor int xln porosity, sl chalky, NSFO

Ls: ala, scat dolo, scat chert-off wh

Dolo: tan-cream, fn xln, poor int xln porosity, NSFO, scat Ls: ala, hvy chert-off wh-tan

Dolo: ala, scat pyrite



2650  
2700  
2750  
2800  
2850

Sh: drk gry, fissile, blk, few pcs blk, scat pyrite

Sh: lt-drk gry, soft, scat pyrite

Sh: ala

Sh: lt gry, soft, smooth, scat pyrite

Sh: ala

Sh: lt gry, vry soft, few pcs blk carb

Sh: lt gry, smooth, soft, scat chalk, scat pyrite

Sh: ala

Sh: lt gry, soft, smooth, scat pyrite

**Hunton 2770' (-1471)**

Chert: wh-lt gry, mostly DNS, scat qtz: ss, fn grn, fair int grn porosity, dead oil st, poor-fair odor

Chert: wh-lt gry, sltst: drk gry-brn, NSFO

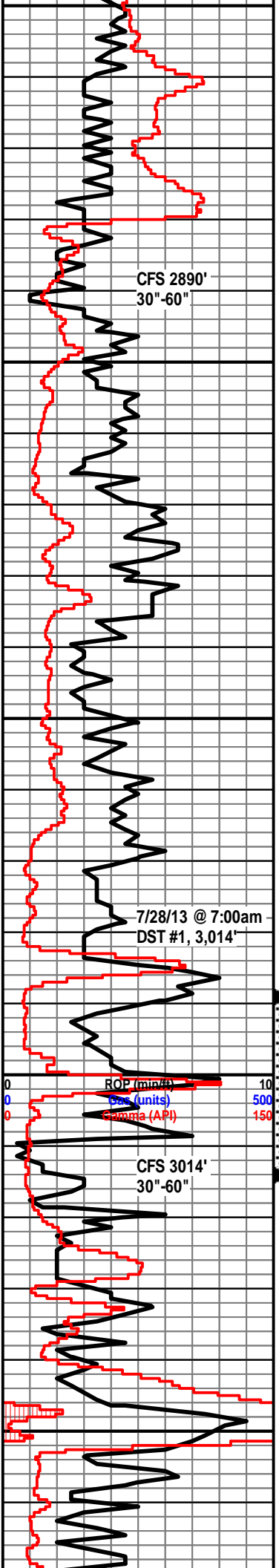
Chert: lt gry-off wh, vry DNS, sl chalky

**Maquoketa 2809' (-1510)**

Slstst: lt gry-lt grn, mostly DNS, no porosity, scat pyrite, scat drk gry-blk shale

Slstst: ala

Slstst: lt gry, mostly DNS, gritty, no porosity, NSFO, scat pyrite, scat drk gry shale



Siltst: ala

**Viola 2874' (-1575)**

Dolo: off wh-tan, fn-md xln, fair-good int xln porosity, fair show heavy free oil, good odor, dull fluor, bright yel streaming cut

Dolo: off wh-lt gry, fn-sub xln, mostly DNS, poor int xln porosity, poor show heavy free oil, fair-good odor, no yel fluor, scat chert-off wh

Dolo: lt gry-lt brn, fn xln, poor int xln porosity, mostly DNS, NSFO, no odor, sl chert-off wh

Dolo: tan-brn, fn xln, poor int xln porosity, mostly DNS, vry hard, sl chert-off wh

Dolo: ala

Dolo: drk brn-tan, fn xln, poor int xln porosity, mostly DNS, vry hard, NSFO, no odor, sl chert-off wh-lt gry

Dolo: ala, few pcs drk gry shale

**Simpson Dolo 2982' (-1683)**

Dolo: drk brn, fn xln, poor int xln porosity, FSFO, fair-good odor, scat chert-off wh-tan, scat ss: fn grn, fair int grn porosity, SSFO

**Simpson Sand 3000' (-1701)**

Ss: qtz, off wh-drk brn, vry fn-fn grn, fairly well rounded, fairly well sorted, fair int grn porosity, poorly cemented-friable, good oil saturation, FSFO, good odor, fair yel fluor

Sh: lt-drk gry-brn-blk

Ss: qtz, wh, vry fn-fn grn, well rounded, fair-poorly sorted, poor int grn porosity, well cemented, dead oil st, NSFO, sl odor, no yel fluor, scat pyrite

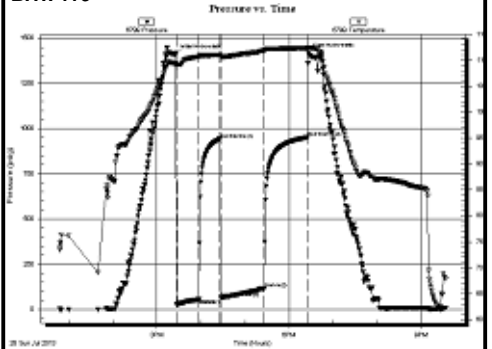
Sh: drk gry-grn, few pcs soft, hvy pyrite

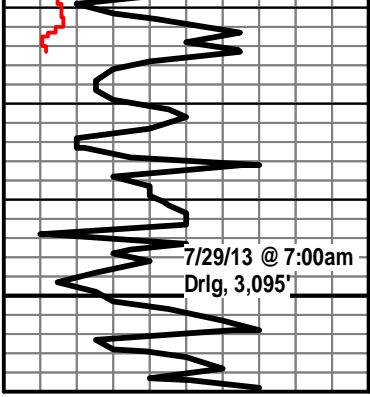
**Arbuckle 3051' (-1752)**

Dolo: tan-lt brn, fn xln, vry poor int xln porosity, mostly DNS, sl chert-wh-off wh, scat pyrite, NSFO

Dolo: off wh-lt tan, fn-md xln, poor int xln porosity,

DST #1 2,989'-3,014' (Top 12' of Simpson Sd)  
 IF: weak blow built to 2", no blow back  
 FF: weak blow built to 3", no blow back  
 Rec: 5' CO  
 62' HMCO (40% M, 60% O)  
 124' HMCO (50% M, 50% O)  
 62' OCM (5% O, 95% M)  
 FP: 25-55, 66-116#  
 SIP: 942-952#  
 HP: 1,412-1,417#  
 BHT: 113





3100



Dolo: Lt tan, fn xln, poor int xln porosity,  
mostly DNS, hvy chert-off wh, sl chalky, scat  
pyrite

Dolo: Lt tan, fn xln, poor int xln porosity, mostly  
DNS, scat pyrite, sl chalky, chert-off wh

Dolo: ala