



## DRILL STEM TEST REPORT

Prepared For: **F.G. Holl Company L.L.C.**

9431 East Central Suite100  
Wichita, Kansas 67206-2563

ATTN: Ryan Greenbaum

**McDonald #1-19**

**19-20s-13w Barton**

Start Date: 2013.07.21 @ 00:00:00

End Date: 2013.07.21 @ 00:00:00

Job Ticket #: 17747                      DST #: 1

Superior Testers Enterprises LLC  
PO Box 138 Great Bend KS 67530  
1-800-792-6902

Printed: 2013.07.21 @ 12:21:43

F.G. Holl Company L.L.C.

19-20s-13w Barton

McDonald #1-19

DST # 1

Lansing Kansas City

2013.07.21



# DRILL STEM TEST REPORT

F.G. Holl Company L.L.C.

**19-20s-13w Barton**

9431 East Central Suite100  
Wichita, Kansas 67206-2563

**McDonald #1-19**

Job Ticket: 17747

**DST#: 1**

ATTN: Ryan Greenbaum

Test Start: 2013.07.21 @ 00:00:00

## GENERAL INFORMATION:

Formation: **Lansing Kansas City**

Deviated: No Whipstock: ft (KB)

Time Tool Opened: 00:00:00

Time Test Ended: 00:00:00

Test Type: Conventional Bottom Hole (Initial)

Tester: Gene Budig

Unit No: 3335-14

**Interval: 3242.00 ft (KB) To 3290.00 ft (KB) (TVD)**

Reference Elevations: 1888.00 ft (KB)

Total Depth: 3290.00 ft (KB) (TVD)

1880.00 ft (CF)

Hole Diameter: 7.88 inches Hole Condition: Fair

KB to GR/CF: 8.00 ft

**Serial #: 6748 Outside**

Press@RunDepth: 203.32 psia @ 3287.18 ft (KB)

Capacity: 5000.00 psia

Start Date: 2013.07.21

End Date:

2013.07.21

Last Calib.:

2013.07.21

Start Time: 07:15:00

End Time:

11:36:30

Time On Btm:

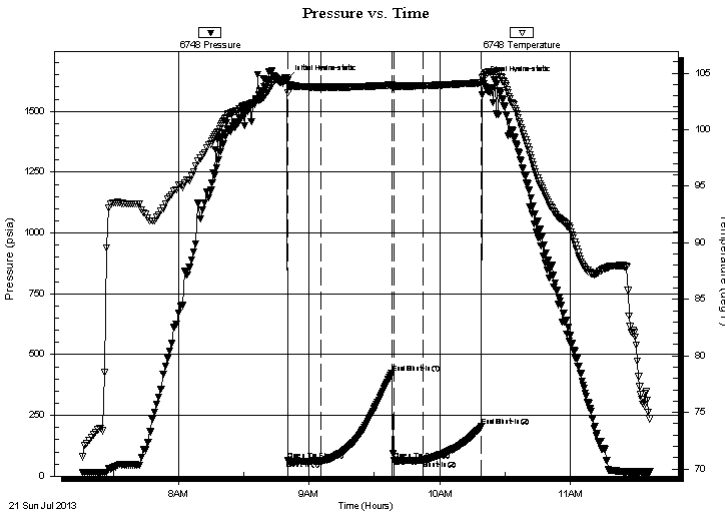
2013.07.21 @ 08:50:00

Time Off Btm:

2013.07.21 @ 10:20:00

**TEST COMMENT:** 1st Opening 15 minutes-Weak surface blow for 9 minutes and died  
1st Shut-In 30 Minutes-No blow back  
2nd Opening 15 Minutes-No blow  
2nd Shut-In 30 Minutes No blow back

## PRESSURE SUMMARY



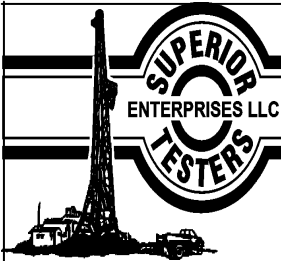
Time (Min.)	Pressure (psia)	Temp (deg F)	Annotation
0	1630.04	104.37	Initial Hydro-static
1	64.51	103.30	Open To Flow (1)
16	63.11	103.76	Shut-In(1)
48	423.00	103.96	End Shut-In(1)
49	64.04	103.85	Open To Flow (2)
63	66.41	103.90	Shut-In(2)
89	203.32	104.16	End Shut-In(2)
90	1625.58	104.69	Final Hydro-static

## Recovery

Length (ft)	Description	Volume (bbl)
15.00	Drilling Mud	0.21

## Gas Rates

Choke (inches)	Pressure (psia)	Gas Rate (Mcf/d)



# DRILL STEM TEST REPORT

F.G. Holl Company L.L.C.  
 9431 East Central Suite100  
 Wichita, Kansas 67206-2563  
 ATTN: Ryan Greenbaum

**19-20s-13w Barton**

**McDonald #1-19**

Job Ticket: 17747

**DST#: 1**

Test Start: 2013.07.21 @ 00:00:00

## GENERAL INFORMATION:

Formation: **Lansing Kansas City**

Deviated: No Whipstock: ft (KB)

Time Tool Opened: 00:00:00

Time Test Ended: 00:00:00

Test Type: Conventional Bottom Hole (Initial)

Tester: Gene Budig

Unit No: 3335-14

**Interval: 3242.00 ft (KB) To 3290.00 ft (KB) (TVD)**

Reference Elevations: 1888.00 ft (KB)

Total Depth: 3290.00 ft (KB) (TVD)

1880.00 ft (CF)

Hole Diameter: 7.88 inches Hole Condition: Fair

KB to GR/CF: 8.00 ft

**Serial #: 6663 Inside**

Press@RunDepth: 203.43 psia @ 3286.18 ft (KB)

Capacity: 5000.00 psia

Start Date: 2013.07.21

End Date: 2013.07.21

Last Calib.: 2013.07.21

Start Time: 07:45:00

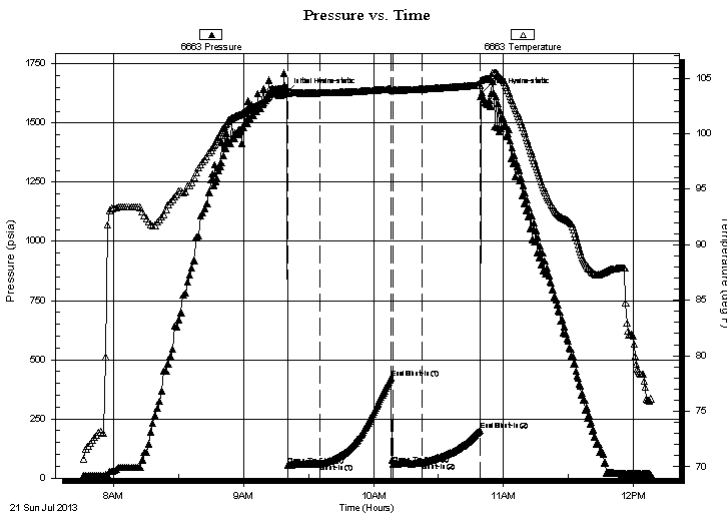
End Time: 12:08:00

Time On Btm: 2013.07.21 @ 09:20:00

Time Off Btm: 2013.07.21 @ 10:50:00

**TEST COMMENT:** 1st Opening 15 minutes-Weak surface blow for 9 minutes and died  
 1st Shut-In 30 Minutes-No blow back  
 2nd Opening 15 Minutes-No blow  
 2nd Shut-In 30 Minutes No blow back

## PRESSURE SUMMARY



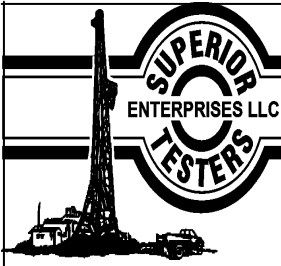
Time (Min.)	Pressure (psia)	Temp (deg F)	Annotation
0	1627.80	104.14	Initial Hydro-static
1	55.45	103.61	Open To Flow (1)
15	61.77	103.68	Shut-In(1)
48	424.29	104.03	End Shut-In(1)
49	60.32	103.93	Open To Flow (2)
63	66.58	104.03	Shut-In(2)
89	203.43	104.39	End Shut-In(2)
90	1627.70	104.87	Final Hydro-static

## Recovery

Length (ft)	Description	Volume (bbl)
15.00	Drilling Mud	0.21

## Gas Rates

Choke (inches)	Pressure (psia)	Gas Rate (Mcf/d)



# DRILL STEM TEST REPORT

**TOOL DIAGRAM**

F.G. Holl Company L.L.C.  
 9431 East Central Suite100  
 Wichita, Kansas 67206-2563  
 ATTN: Ryan Greenbaum

**19-20s-13w Barton**  
**McDonald #1-19**  
 Job Ticket: 17747      **DST#: 1**  
 Test Start: 2013.07.21 @ 00:00:00

## Tool Information

Drill Pipe:	Length: 3244.00 ft	Diameter: 3.80 inches	Volume: 45.50 bbl	Tool Weight: 2000.00 lb
Heavy Wt. Pipe:	Length: 0.00 ft	Diameter: 0.00 inches	Volume: 0.00 bbl	Weight set on Packer: 20000.00 lb
Drill Collar:	Length: 0.00 ft	Diameter: 0.00 inches	Volume: 0.00 bbl	Weight to Pull Loose: 58000.00 lb
			<u>Total Volume: 45.50 bbl</u>	Tool Chased 0.00 ft
Drill Pipe Above KB:	30.00 ft			String Weight: Initial 48000.00 lb
Depth to Top Packer:	3242.00 ft			Final 48000.00 lb
Depth to Bottom Packer:	ft			
Interval between Packers:	48.18 ft			
Tool Length:	76.18 ft			
Number of Packers:	2	Diameter: 6.75 inches		

Tool Comments:

Tool Description	Length (ft)	Serial No.	Position	Depth (ft)	Accum. Lengths
Shut-In Tool	5.00			3219.00	
Hydraulic Tool	5.00			3224.00	
Safety Joint	2.00			3226.00	
Jars	6.00			3232.00	
Packer	5.00			3237.00	28.00      Bottom Of Top Packer
Packer	5.00			3242.00	
Anchor	5.00			3247.00	
Change Over Sub	0.75			3247.75	
Drill Pipe	30.68			3278.43	
Change Over Sub	0.75			3279.18	
Anchor	6.00			3285.18	
Recorder	1.00	6663	Inside	3286.18	
Recorder	1.00	6748	Outside	3287.18	
Bullnose	3.00			3290.18	48.18      Bottom Packers & Anchor

**Total Tool Length: 76.18**



# DRILL STEM TEST REPORT

## FLUID SUMMARY

F.G. Holl Company L.L.C.

**19-20s-13w Barton**

9431 East Central Suite100  
Wichita, Kansas 67206-2563

**McDonald #1-19**

Job Ticket: 17747

**DST#: 1**

ATTN: Ryan Greenbaum

Test Start: 2013.07.21 @ 00:00:00

### Mud and Cushion Information

Mud Type: Gel Chem

Cushion Type:

Oil API:

deg API

Mud Weight: 9.00 lb/gal

Cushion Length: ft

Water Salinity: ppm

Viscosity: 55.00 sec/qt

Cushion Volume: bbl

Water Loss: 9.20 in<sup>3</sup>

Gas Cushion Type:

Resistivity: ohm.m

Gas Cushion Pressure: psia

Salinity: 6700.00 ppm

Filter Cake: 1.00 inches

### Recovery Information

Recovery Table

Length ft	Description	Volume bbl
15.00	Drilling Mud	0.210

Total Length: 15.00 ft      Total Volume: 0.210 bbl

Num Fluid Samples: 0

Num Gas Bombs: 0

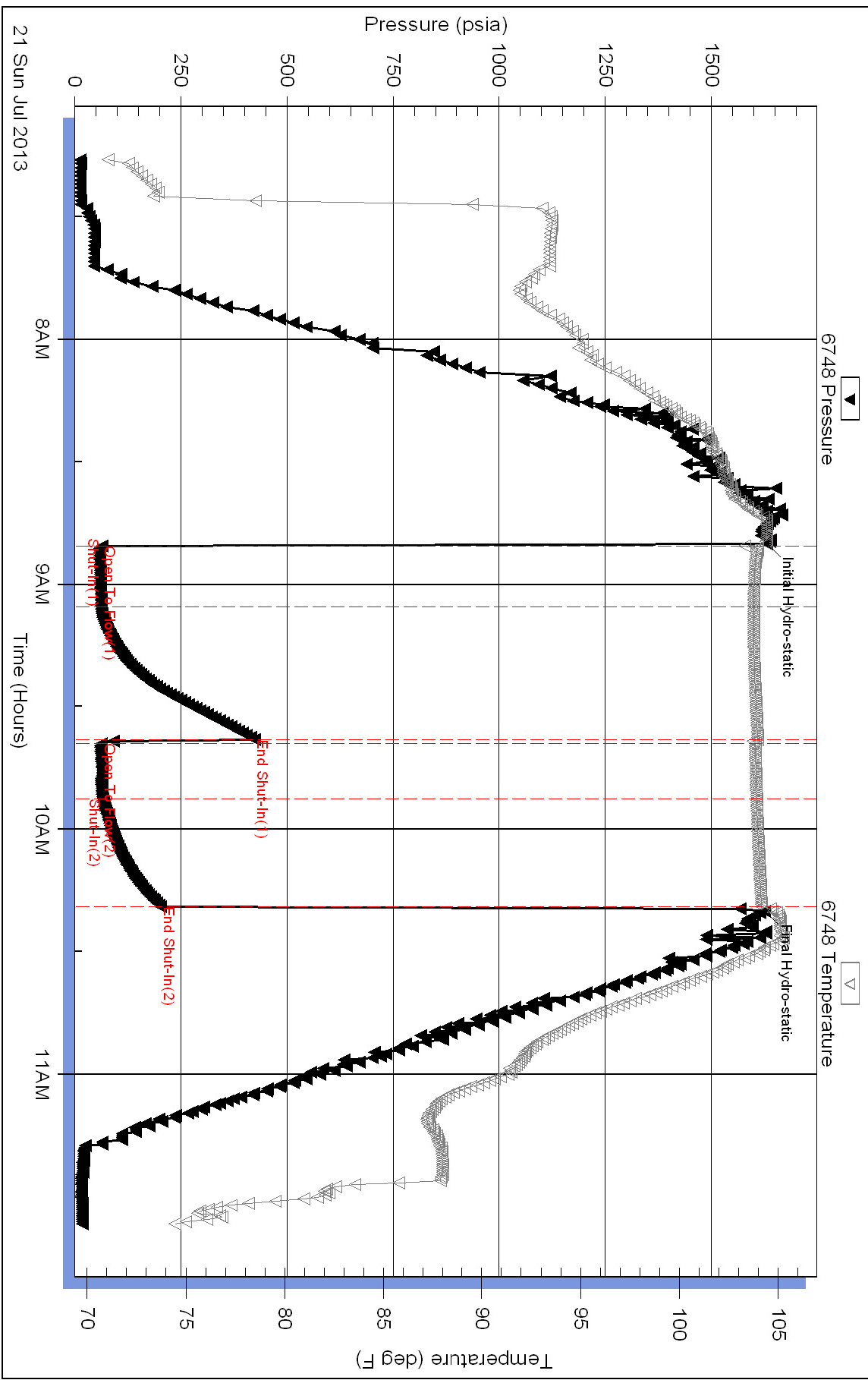
Serial #:

Laboratory Name:

Laboratory Location:

Recovery Comments:

### Pressure vs. Time



### Pressure vs. Time

