



DRILL STEM TEST REPORT

Prepared For: **F.G. Holl Company L.L.C.**

9431 East Central Suite100
Wichita, Kansas 67206-2563

ATTN: Ryan Greenbaum

McDonald #1-19

19-20s-13w Barton

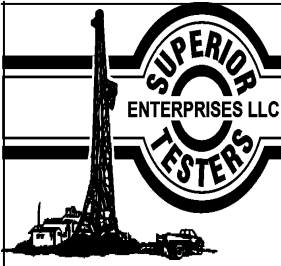
Start Date: 2013.07.24 @ 00:00:00

End Date: 2013.07.24 @ 00:00:00

Job Ticket #: 17102 DST #: 6

Superior Testers Enterprises LLC
PO Box 138 Great Bend KS 67530
1-800-792-6902

Printed: 2013.07.24 @ 17:28:40



DRILL STEM TEST REPORT

F.G. Holl Company L.L.C.
 9431 East Central Suite100
 Wichita, Kansas 67206-2563
 ATTN: Ryan Greenbaum

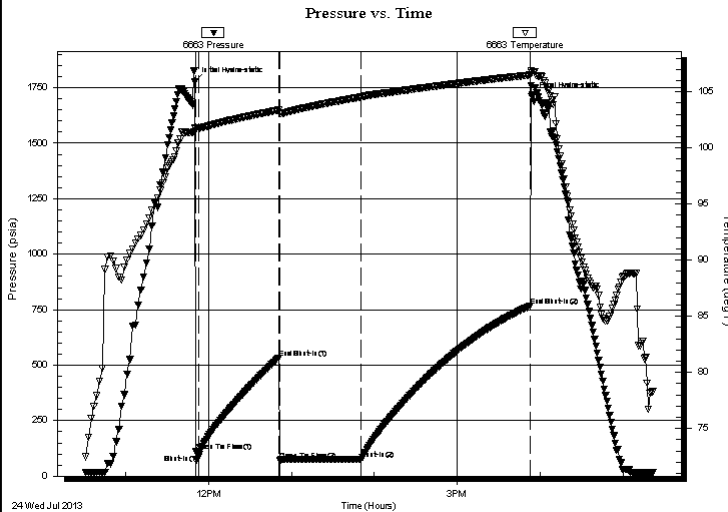
19-20s-13w Barton
McDonald #1-19
 Job Ticket: 17102 **DST#: 6**
 Test Start: 2013.07.24 @ 00:00:00

GENERAL INFORMATION:

Formation: **Arbuckle**
 Deviated: No Whipstock: ft (KB)
 Test Type: Conventional Bottom Hole (Initial)
 Time Tool Opened: 00:00:00 Tester: Gene Budig
 Time Test Ended: 00:00:00 Unit No: 3335
 Interval: **3450.00 ft (KB) To 3520.00 ft (KB) (TVD)** Reference Elevations: 1888.00 ft (KB)
 Total Depth: 3520.00 ft (KB) (TVD) 1880.00 ft (CF)
 Hole Diameter: 7.88 inches Hole Condition: Fair KB to GR/CF: 8.00 ft

Serial #: 6663 Inside
 Press@RunDepth: 767.87 psia @ 3515.68 ft (KB) Capacity: 5000.00 psia
 Start Date: 2013.07.24 End Date: 2013.07.24 Last Calib.: 2013.07.24
 Start Time: 10:30:00 End Time: 17:21:30 Time On Btm: 2013.07.24 @ 11:50:00
 Time Off Btm: 2013.07.24 @ 15:54:00

TEST COMMENT: 1st Opening 2 minutes good blow built to the bottom of a 5 gallon bucket in 1 1/2 minutes
 1st Shut-in 60 Minutes No blow back
 2nd Opening 60 Minutes-Strong blow built to the bottom of a 5 gallon bucket in 15 seconds
 2nd Shut-in 120 Minutes-No blow back



PRESSURE SUMMARY

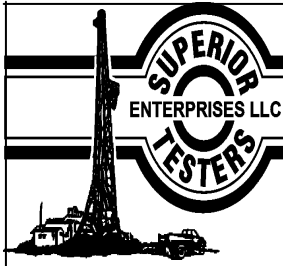
Time (Min.)	Pressure (psia)	Temp (deg F)	Annotation
0	1775.94	101.78	Initial Hydro-static
1	111.52	101.68	Open To Flow (1)
3	97.88	101.76	Shut-In(1)
61	532.68	103.36	End Shut-In(1)
62	72.33	103.07	Open To Flow (2)
121	76.98	104.53	Shut-In(2)
243	767.87	106.49	End Shut-In(2)
244	1709.57	106.72	Final Hydro-static

Recovery

Length (ft)	Description	Volume (bbl)
2050.00	gAS IN THE PIPE	28.76
35.00	dRILLING mUD	0.49

Gas Rates

	Choke (inches)	Pressure (psia)	Gas Rate (Mcf/d)



DRILL STEM TEST REPORT

F.G. Holl Company L.L.C.

19-20s-13w Barton

9431 East Central Suite100
Wichita, Kansas 67206-2563

McDonald #1-19

Job Ticket: 17102

DST#: 6

ATTN: Ryan Greenbaum

Test Start: 2013.07.24 @ 00:00:00

GENERAL INFORMATION:

Formation: **Arbuckle**

Deviated: No Whipstock: ft (KB)

Time Tool Opened: 00:00:00

Time Test Ended: 00:00:00

Test Type: Conventional Bottom Hole (Initial)

Tester: Gene Budig

Unit No: 3335

Interval: 3450.00 ft (KB) To 3520.00 ft (KB) (TVD)

Reference Elevations: 1888.00 ft (KB)

Total Depth: 3520.00 ft (KB) (TVD)

1880.00 ft (CF)

Hole Diameter: 7.88 inches Hole Condition: Fair

KB to GR/CF: 8.00 ft

Serial #: 6748 Inside

Press@RunDepth: 770.28 psia @ 3516.68 ft (KB)

Capacity: 5000.00 psia

Start Date: 2013.07.24

End Date: 2013.07.24

Last Calib.: 2013.07.24

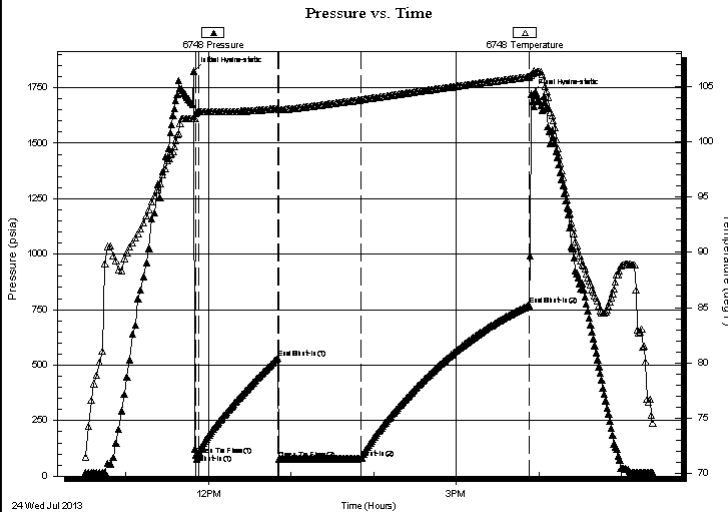
Start Time: 10:30:00

End Time: 17:22:30

Time On Btm: 2013.07.24 @ 11:49:30

Time Off Btm: 2013.07.24 @ 15:54:30

TEST COMMENT: 1st Opening 2 minutes good blow built to the bottom of a 5 gallon bucket in 1 1/2 minutes
1st Shut-in 60 Minutes No blow back
2nd Opening 60 Minutes-Strong blow built to the bottom of a 5 gallon bucket in 15 seconds
2nd Shut-in 120 Minutes-No blow back



PRESSURE SUMMARY

Time (Min.)	Pressure (psia)	Temp (deg F)	Annotation
0	1824.50	102.11	Initial Hydro-static
2	93.89	102.53	Open To Flow (1)
4	96.94	102.70	Shut-In(1)
62	533.18	103.00	End Shut-In(1)
62	74.30	102.89	Open To Flow (2)
122	79.56	103.79	Shut-In(2)
244	770.28	105.85	End Shut-In(2)
245	1721.41	106.03	Final Hydro-static

Recovery

Length (ft)	Description	Volume (bbl)
2050.00	gAS IN THE PIPE	28.76
35.00	dRILLING mUD	0.49

Gas Rates

Choke (inches)	Pressure (psia)	Gas Rate (Mcf/d)



DRILL STEM TEST REPORT

TOOL DIAGRAM

F.G. Holl Company L.L.C.

19-20s-13w Barton

9431 East Central Suite100
Wichita, Kansas 67206-2563

McDonald #1-19

Job Ticket: 17102

DST#: 6

ATTN: Ryan Greenbaum

Test Start: 2013.07.24 @ 00:00:00

Tool Information

Drill Pipe:	Length: 3434.00 ft	Diameter: 3.80 inches	Volume: 48.17 bbl	Tool Weight: 2000.00 lb
Heavy Wt. Pipe:	Length: 0.00 ft	Diameter: 0.00 inches	Volume: 0.00 bbl	Weight set on Packer: 20000.00 lb
Drill Collar:	Length: 0.00 ft	Diameter: 0.00 inches	Volume: 0.00 bbl	Weight to Pull Loose: 90000.00 lb
			<u>Total Volume: 48.17 bbl</u>	Tool Chased 0.00 ft
Drill Pipe Above KB:	12.00 ft			String Weight: Initial 50000.00 lb
Depth to Top Packer:	3450.00 ft			Final 50000.00 lb
Depth to Bottom Packer:	ft			
Interval between Packers:	69.68 ft			
Tool Length:	97.68 ft			
Number of Packers:	2	Diameter: 6.75 inches		

Tool Comments:

Tool Description	Length (ft)	Serial No.	Position	Depth (ft)	Accum. Lengths
------------------	-------------	------------	----------	------------	----------------

Shut-In Tool	5.00			3427.00	
Hydraulic Tool	5.00			3432.00	
Safety Joint	2.00			3434.00	
Jars	6.00			3440.00	
Packer	5.00			3445.00	28.00 Bottom Of Top Packer
Packer	5.00			3450.00	
Anchor	6.00			3456.00	
Change Over Sub	0.75			3456.75	
Drill Pipe	31.18			3487.93	
Change Over Sub	0.75			3488.68	
Anchor	26.00			3514.68	
Recorder	1.00	6663	Inside	3515.68	
Recorder	1.00	6748	Inside	3516.68	
Bullnose	3.00			3519.68	69.68 Bottom Packers & Anchor

Total Tool Length: 97.68



DRILL STEM TEST REPORT

FLUID SUMMARY

F.G. Holl Company L.L.C.

19-20s-13w Barton

9431 East Central Suite100
Wichita, Kansas 67206-2563

McDonald #1-19

Job Ticket: 17102

DST#: 6

ATTN: Ryan Greenbaum

Test Start: 2013.07.24 @ 00:00:00

Mud and Cushion Information

Mud Type: Gel Chem
Mud Weight: 9.00 lb/gal
Viscosity: 68.00 sec/qt
Water Loss: 9.20 in³
Resistivity: ohm.m
Salinity: 8200.00 ppm
Filter Cake: 1.00 inches

Cushion Type:
Cushion Length: ft
Cushion Volume: bbl
Gas Cushion Type:
Gas Cushion Pressure: psia

Oil API: deg API
Water Salinity: ppm

Recovery Information

Recovery Table

Length ft	Description	Volume bbl
2050.00	gAS IN THE PIPE	28.756
35.00	dRILLING mUD	0.491

Total Length: 2085.00 ft Total Volume: 29.247 bbl

Num Fluid Samples: 0

Num Gas Bombs: 0

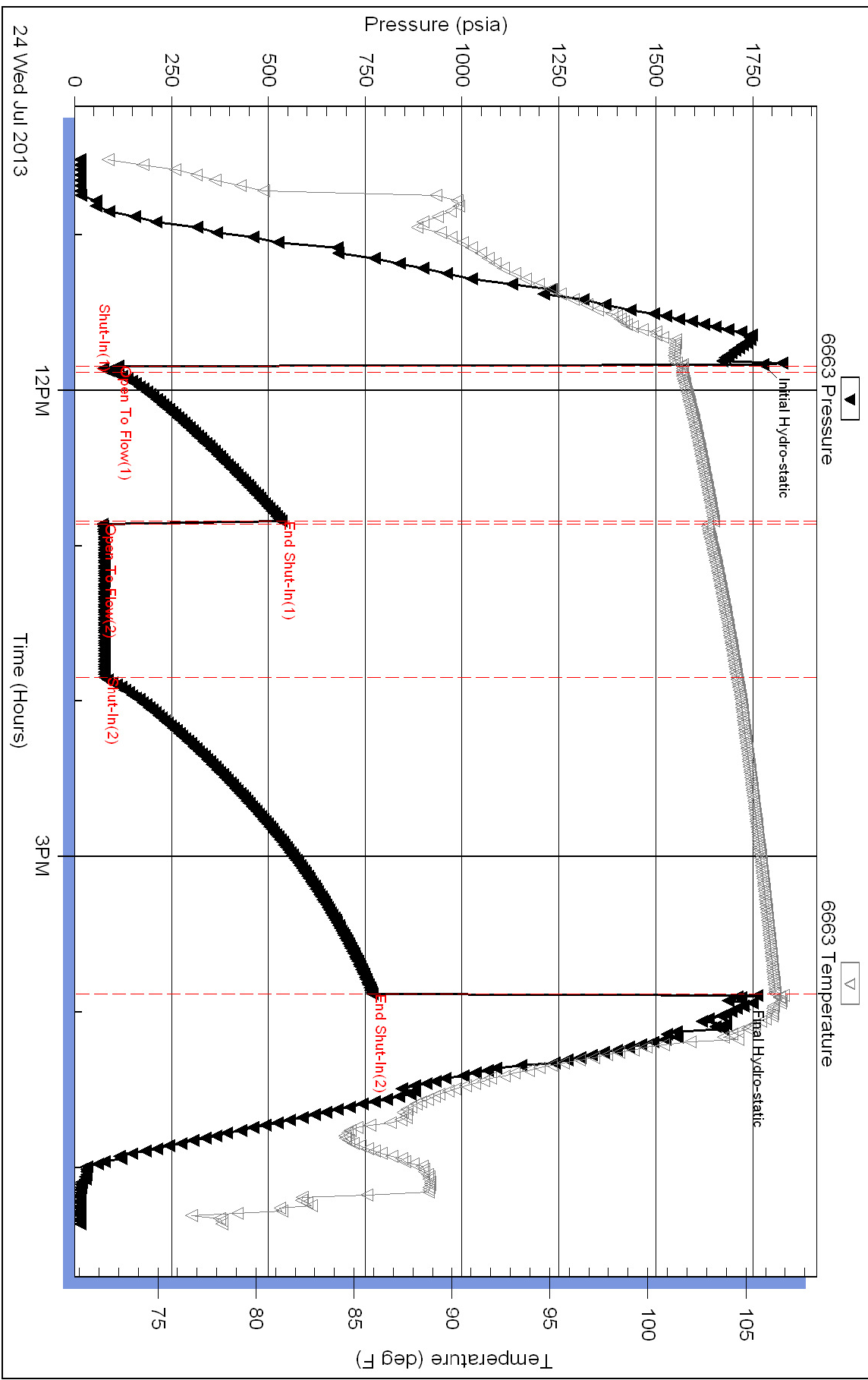
Serial #:

Laboratory Name:

Laboratory Location:

Recovery Comments:

Pressure vs. Time



Pressure vs. Time

