



DRILL STEM TEST REPORT

Prepared For: **FG Holl Company LLC**

9431 East Central
Suite 100
Wichita, Kansas 67206+2563

ATTN: Ryan Greenbaum

Krupp 3-10

10/22S/14W/Stafford

Start Date: 2013.10.09 @ 20:36:00

End Date: 2013.10.10 @ 02:46:30

Job Ticket #: 18164 DST #: 3

Superior Testers Enterprises LLC
PO Box 138 Great Bend KS 67530
1-800-792-6902

Printed: 2013.10.10 @ 02:55:01

FG Holl Company LLC
10/22S/14W/Stafford
Krupp 3-10
DST # 3
Lansing/Kansas City
2013.10.09



DRILL STEM TEST REPORT

FG Holl Company LLC
 9431 East Central
 Suite 100
 Wichita, Kansas 67206+2563
 ATTN: Ryan Greenbaum

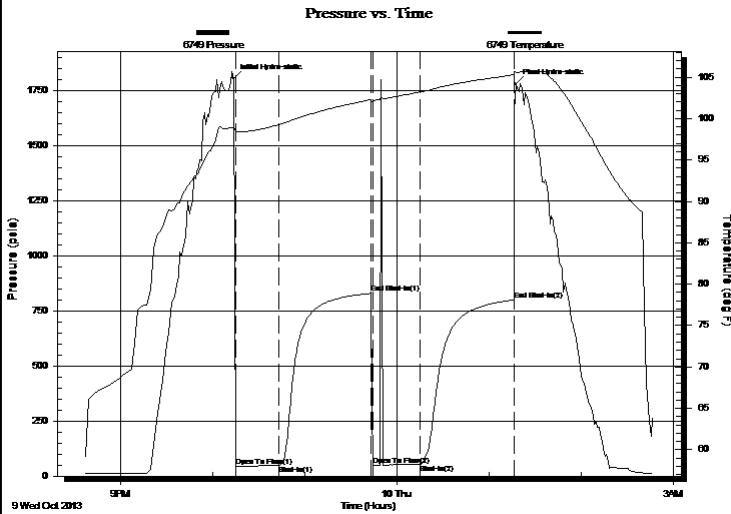
10/22S/14W/Stafford
Krupp 3-10
 Job Ticket: 18164 **DST#: 3**
 Test Start: 2013.10.09 @ 20:36:00

GENERAL INFORMATION:

Formation: **Lansing/Kansas City**
 Deviated: No Whipstock: ft (KB)
 Test Type: Conventional Bottom Hole (Initial)
 Time Tool Opened: 22:14:30 Tester: Ken Swinney
 Time Test Ended: 02:46:30 Unit No: 3325 Great Bend/36
 Interval: **3588.00 ft (KB) To 3622.00 ft (KB) (TVD)** Reference Elevations: 1946.00 ft (KB)
 Total Depth: 3622.00 ft (KB) (TVD) 1938.00 ft (CF)
 Hole Diameter: 7.80 inches Hole Condition: Poor KB to GR/CF: 8.00 ft

Serial #: 6749 Inside
 Press @ Run Depth: 51.74 psia @ 3618.00 ft (KB) Capacity: 5000.00 psia
 Start Date: 2013.10.09 End Date: 2013.10.10 Last Calib.: 2013.10.10
 Start Time: 20:36:00 End Time: 02:46:30 Time On Btm: 2013.10.09 @ 22:13:30
 Time Off Btm: 2013.10.10 @ 01:17:30

TEST COMMENT: 1ST Open 30 Minutes/Weak blow/Blow built to 1/2 inch
 1ST Shut In 60 Minutes/No blow back
 2ND Open 30 Minutes/Dead no blow /Flush tool no help
 2ND Shut In 60 Minutes/No blow back



PRESSURE SUMMARY

Time (Min.)	Pressure (psia)	Temp (deg F)	Annotation
0	1803.48	98.88	Initial Hydro-static
1	44.84	98.50	Open To Flow (1)
30	49.53	99.27	Shut-In(1)
90	828.37	102.31	End Shut-In(1)
91	48.74	102.19	Open To Flow (2)
122	51.74	103.22	Shut-In(2)
183	799.10	105.30	End Shut-In(2)
184	1778.66	105.53	Final Hydro-static

Recovery

Length (ft)	Description	Volume (bbl)
15.00	Mud 100%	0.21

Gas Rates

Choke (inches)	Pressure (psia)	Gas Rate (Mcf/d)



DRILL STEM TEST REPORT

FG Holl Company LLC
 9431 East Central
 Suite 100
 Wichita, Kansas 67206+2563
 ATTN: Ryan Greenbaum

10/22S/14W/Stafford
Krupp 3-10
 Job Ticket: 18164 **DST#: 3**
 Test Start: 2013.10.09 @ 20:36:00

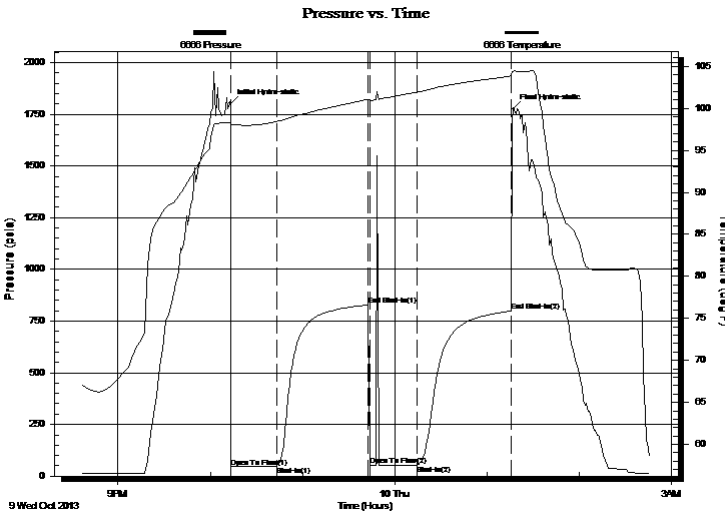
GENERAL INFORMATION:

Formation: **Lansing/Kansas City**
 Deviated: No Whipstock: ft (KB)
 Time Tool Opened: 22:14:30
 Time Test Ended: 02:46:30
 Interval: **3588.00 ft (KB) To 3622.00 ft (KB) (TVD)**
 Total Depth: 3622.00 ft (KB) (TVD)
 Hole Diameter: 7.80 inches Hole Condition: Poor
 Test Type: Conventional Bottom Hole (Initial)
 Tester: Ken Swinney
 Unit No: 3325 Great Bend/36
 Reference Elevations: 1946.00 ft (KB)
 1938.00 ft (CF)
 KB to GR/CF: 8.00 ft

Serial #: 6666 Outside
 Press @ Run Depth: 797.76 psia @ 3619.00 ft (KB) Capacity: 5000.00 psia
 Start Date: 2013.10.09 End Date: 2013.10.10 Last Calib.: 2013.10.10
 Start Time: 20:36:00 End Time: 02:45:30 Time On Btm: 2013.10.09 @ 22:13:00
 Time Off Btm: 2013.10.10 @ 01:17:00

TEST COMMENT: 1ST Open 30 Minutes/Weak blow/Blow built to 1/2 inch
 1ST Shut In 60 Minutes/No blow back
 2ND Open 30 Minutes/Dead no blow /Flush tool no help
 2ND Shut In 60 Minutes/No blow back

PRESSURE SUMMARY



Time (Min.)	Pressure (psia)	Temp (deg F)	Annotation
0	1803.53	98.34	Initial Hydro-static
1	44.61	98.00	Open To Flow (1)
30	49.67	98.42	Shut-In(1)
90	827.23	101.06	End Shut-In(1)
91	50.68	100.92	Open To Flow (2)
122	52.61	101.94	Shut-In(2)
183	797.76	103.84	End Shut-In(2)
184	1776.75	104.44	Final Hydro-static

Recovery

Gas Rates

Length (ft)	Description	Volume (bbl)
15.00	Mud 100%	0.21

Choke (inches)	Pressure (psia)	Gas Rate (Mcf/d)



DRILL STEM TEST REPORT

TOOL DIAGRAM

FG Holl Company LLC

10/22S/14W/Stafford

9431 East Central
Suite 100
Wichita, Kansas 67206+2563
ATTN: Ryan Greenbaum

Krupp 3-10

Job Ticket: 18164

DST#: 3

Test Start: 2013.10.09 @ 20:36:00

Tool Information

Drill Pipe:	Length: 3567.00 ft	Diameter: 3.80 inches	Volume: 50.04 bbl	Tool Weight: 2000.00 lb
Heavy Wt. Pipe:	Length: 0.00 ft	Diameter: 0.00 inches	Volume: 0.00 bbl	Weight set on Packer: 20000.00 lb
Drill Collar:	Length: 0.00 ft	Diameter: 0.00 inches	Volume: 0.00 bbl	Weight to Pull Loose: 62000.00 lb
			<u>Total Volume: 50.04 bbl</u>	Tool Chased 0.00 ft
Drill Pipe Above KB:	6.00 ft			String Weight: Initial 46000.00 lb
Depth to Top Packer:	3588.00 ft			Final 46000.00 lb
Depth to Bottom Packer:	ft			
Interval between Packers:	34.00 ft			
Tool Length:	61.00 ft			
Number of Packers:	2	Diameter: 6.75 inches		

Tool Comments:

Tool Description	Length (ft)	Serial No.	Position	Depth (ft)	Accum. Lengths
------------------	-------------	------------	----------	------------	----------------

Shut In Tool	5.00			3566.00	
Hydraulic Tool	5.00			3571.00	
Jars	5.00			3576.00	
Safety Joint	2.00			3578.00	
Packer	5.00			3583.00	27.00 Bottom Of Top Packer
Packer	5.00			3588.00	
Anchor	29.00			3617.00	
Recorder	1.00	6749	Inside	3618.00	
Recorder	1.00	6666	Outside	3619.00	
Bullnose	3.00			3622.00	34.00 Bottom Packers & Anchor
Total Tool Length:	61.00				



DRILL STEM TEST REPORT

FLUID SUMMARY

FG Holl Company LLC

10/22S/14W/Stafford

9431 East Central
Suite 100
Wichita, Kansas 67206+2563
ATTN: Ryan Greenbaum

Krupp 3-10

Job Ticket: 18164

DST#: 3

Test Start: 2013.10.09 @ 20:36:00

Mud and Cushion Information

Mud Type: Gel Chem
Mud Weight: 9.00 lb/gal
Viscosity: 58.00 sec/qt
Water Loss: 8.80 in³
Resistivity: ohm.m
Salinity: 6000.00 ppm
Filter Cake: 1.00 inches

Cushion Type:
Cushion Length: ft
Cushion Volume: bbl
Gas Cushion Type:
Gas Cushion Pressure: psia

Oil API: deg API
Water Salinity: ppm

Recovery Information

Recovery Table

Length ft	Description	Volume bbl
15.00	Mud 100%	0.210

Total Length: 15.00 ft Total Volume: 0.210 bbl

Num Fluid Samples: 0

Num Gas Bombs: 0

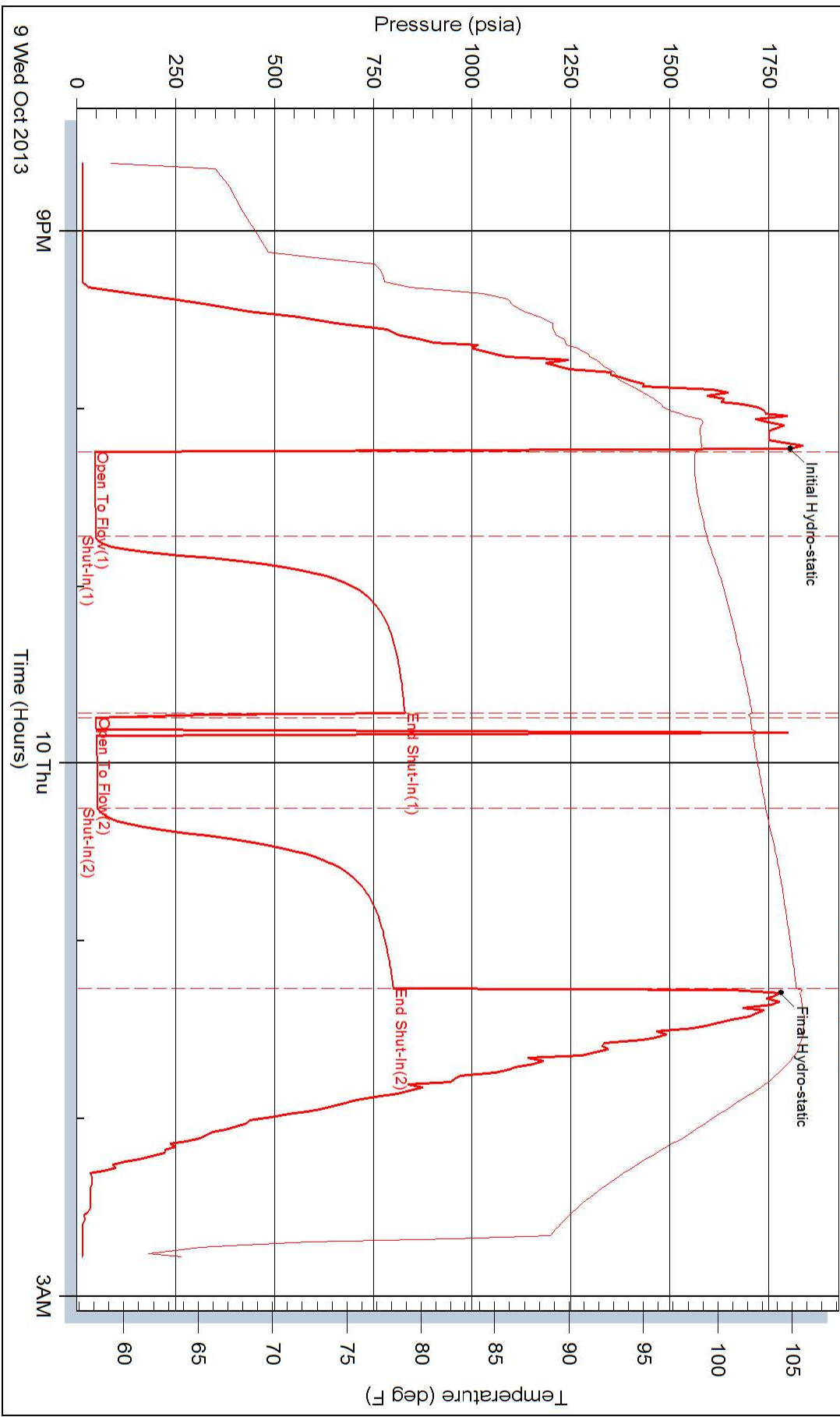
Serial #:

Laboratory Name:

Laboratory Location:

Recovery Comments:

Pressure vs. Time



Pressure vs. Time

