



DRILL STEM TEST REPORT

Prepared For: **FG Holl Company LLC**

9431 East Central
Suite 100
Wichita, Kansas 67206+2563

ATTN: Renee Husted

Anshutz "B"

10/21S/14W/Stafford

Start Date: 2013.09.20 @ 00:12:00

End Date: 2013.09.20 @ 04:58:30

Job Ticket #: 18154 DST #: 4

Superior Testers Enterprises LLC
PO Box 138 Great Bend KS 67530
1-800-792-6902

Printed: 2013.09.20 @ 05:06:08

FG Holl Company LLC
10/21S/14W/Stafford
Anshutz "B"
DST # 4
Lansing/Kansas City
2013.09.20



DRILL STEM TEST REPORT

TOOL DIAGRAM

FG Holl Company LLC

10/21S/14W/Stafford

9431 East Central
Suite 100
Wichita, Kansas 67206+2563
ATTN: Renee Husted

Anshutz "B"

Job Ticket: 18154

DST#: 4

Test Start: 2013.09.20 @ 00:12:00

Tool Information

Drill Pipe:	Length: 3565.00 ft	Diameter: 3.80 inches	Volume: 50.01 bbl	Tool Weight: 2000.00 lb
Heavy Wt. Pipe:	Length: 0.00 ft	Diameter: 0.00 inches	Volume: 0.00 bbl	Weight set on Packer: 20000.00 lb
Drill Collar:	Length: 0.00 ft	Diameter: 0.00 inches	Volume: 0.00 bbl	Weight to Pull Loose: 56000.00 lb
			<u>Total Volume: 50.01 bbl</u>	Tool Chased 0.00 ft
Drill Pipe Above KB:	32.00 ft			String Weight: Initial 50000.00 lb
Depth to Top Packer:	3560.00 ft			Final 50000.00 lb
Depth to Bottom Packer:	ft			
Interval between Packers:	30.00 ft			
Tool Length:	57.00 ft			
Number of Packers:	2	Diameter: 6.75 inches		

Tool Comments:

Tool Description	Length (ft)	Serial No.	Position	Depth (ft)	Accum. Lengths
Shut In Tool	5.00			3538.00	
Hydraulic Tool	5.00			3543.00	
Jars	5.00			3548.00	
Safety Joint	2.00			3550.00	
Packer	5.00			3555.00	27.00 Bottom Of Top Packer
Packer	5.00			3560.00	
Anchor	25.00			3585.00	
Recorder	1.00	6749	Inside	3586.00	
Recorder	1.00	6666	Outside	3587.00	
Bullnose	3.00			3590.00	30.00 Bottom Packers & Anchor
Total Tool Length:	57.00				



DRILL STEM TEST REPORT

FLUID SUMMARY

FG Holl Company LLC

10/21S/14W/Stafford

9431 East Central
Suite 100
Wichita, Kansas 67206+2563
ATTN: Renee Husted

Anshutz "B"

Job Ticket: 18154

DST#: 4

Test Start: 2013.09.20 @ 00:12:00

Mud and Cushion Information

Mud Type: Gel Chem
Mud Weight: 10.00 lb/gal
Viscosity: 54.00 sec/qt
Water Loss: 8.80 in³
Resistivity: ohm.m
Salinity: 8000.00 ppm
Filter Cake: 1.00 inches

Cushion Type:
Cushion Length: ft
Cushion Volume: bbl
Gas Cushion Type:
Gas Cushion Pressure: psia

Oil API: deg API
Water Salinity: ppm

Recovery Information

Recovery Table

Length ft	Description	Volume bbl
0.00	Drilling mud in tool 100%	0.000

Total Length: ft Total Volume: bbl

Num Fluid Samples: 0

Num Gas Bombs: 0

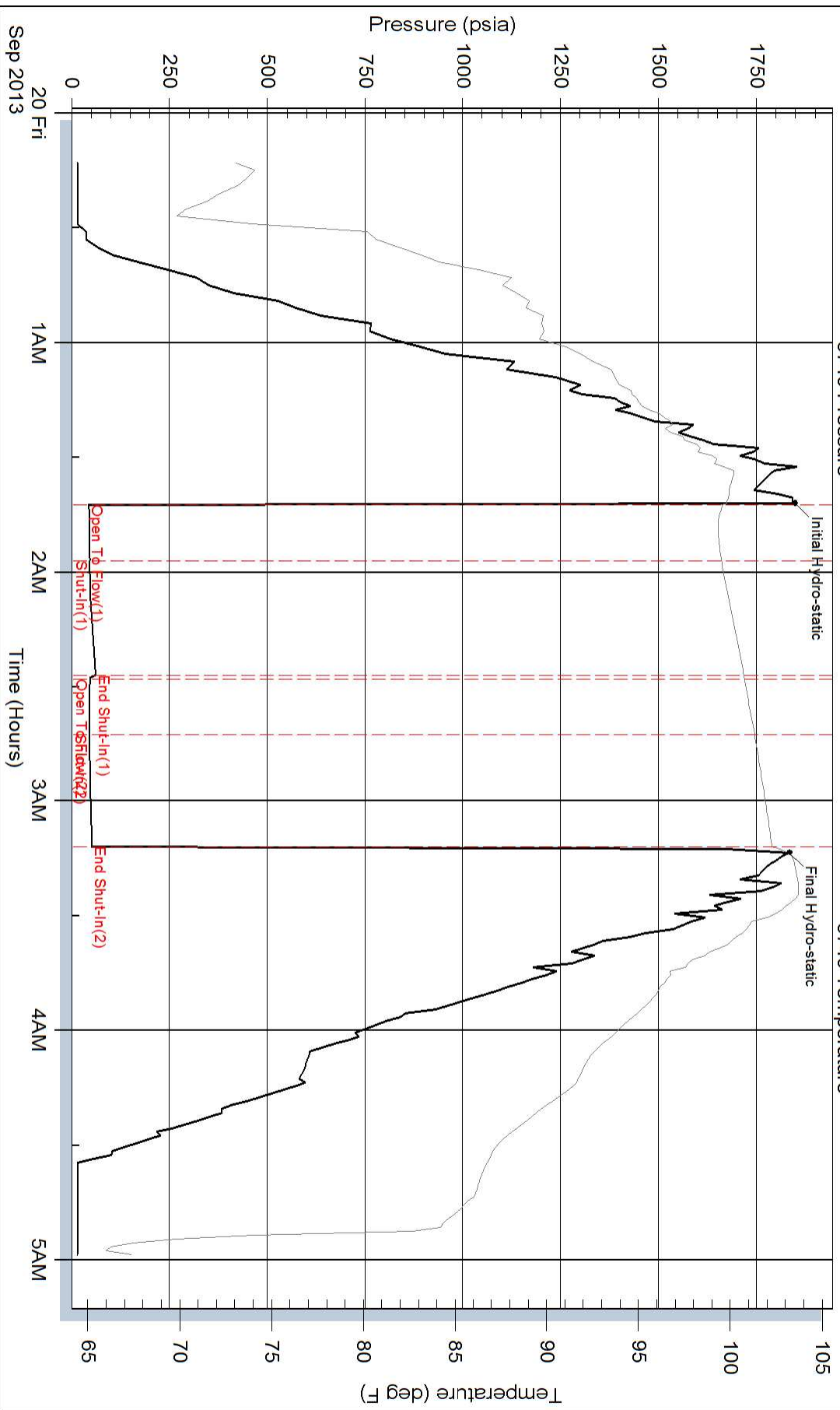
Serial #:

Laboratory Name:

Laboratory Location:

Recovery Comments:

Pressure vs. Time



Pressure vs. Time

