

WELLSITE GEOLOGIST'S REPORT
WellSight Systems

Scale 1:240 (5"=100') Imperial
Measured Depth Log

Well Name: Smith No 1-30
 Location: Sec 30 T20S R15W
 License Number: 15-009-25,932-0000
 Spud Date: Jan 10 2014
 Surface Coordinates: 2340' FNL, 1570' FEL, 30' S., 80' E. of SE SW NE
 Region: Barton Co
 Drilling Completed: Jan 21 2014
 Bottom Hole Coordinates: VERTICAL
 Ground Elevation (ft): 2031' K.B. Elevation (ft): 2039'
 Logged Interval (ft): 1850' To: 4000' Total Depth (ft): 4000'
 Formation: Arbutuckle
 Type of Drilling Fluid: STARCH/CHEMICAL
 Printed by WellSight Log Viewer from WellSight Systems 1-800-447-1534 www.WellSight.com

OPERATOR:

Company: F.G. Holl Company LLC
 Address: 9431 E. Central, Suite 100
 Wichita, Kansas 67206

WELLSITE GEOLOGIST:

RENE HUSTEAD
 600 N. WINWOOD ST.
 GARDNER, KANSAS 66030
 PHONE (913) 208-3390

Geologist Contact Info:

Name: Rene Husted
 Company: Consultant
 Address: 600 N. Winwood St.
 Gardner, Kansas 66030
 Phone- (913) 908-3390

DRILLING CONTRACTOR:

DUKE RIG #2
 Double derrick; drill pipe 4.5" X H (16.6#); collars 6.25 x 2.25 x 357.68"; Bit; 7 7/8, Reed HP52, 3-14's; Reference datum 8 ft above ground level. Poor Boy's (Martin- Decker) mechanical geologist.

SURFACE CASING:

SURFACE CASING SET AT 8 5/8 INCHES AT 1050 FT WITH 400 SAXS OF CEMENT
 PRODUCTION CASING SET WITH 5 1/2 INCHES AT 3996 FT WITH 150 SAXS

CIRCULATION SYSTEM:

Pump Make: EWCO, Pump model: 14W1400, liner size 6, stroke 14, Starch mud @ 1850' to 2590', Chemical mud @ 2590' to TD
 Mud/Co/Service Mud, Inc.-Jason Whiting-Great Bend, Ks-620-282-0556

GAS DETECTION SYSTEM:

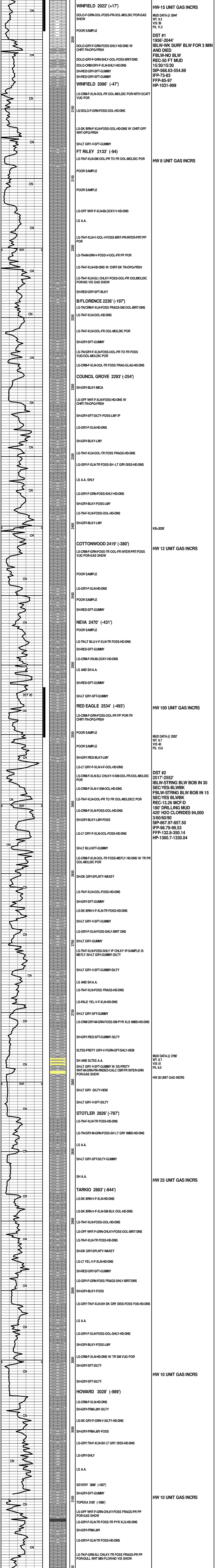
MBC Well Logging and Leasing -Analog Gas Detection.

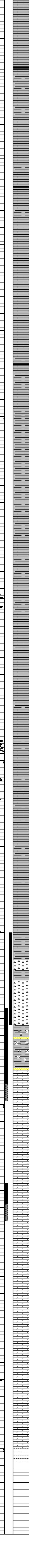
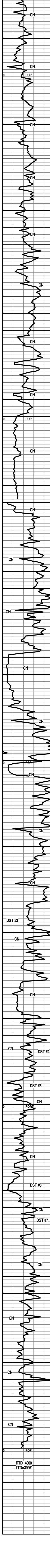
OPEN HOLE LOGS:

DN (PE), DI (SP), ML: 5" detail RED-3700'; 2" DI to surface casing; Log-Tech, Inc., Hays, KS, J. Long; Log total depth (4000) was 4 ft short to rotary total depth at (3996).

COMPLETION:

PRODUCTION CASING SET ON RED EAGLE AND ARBUCKLE





LS-TN-GRY-F-XLN-FOSS-FRAGS-TR SH LT GRY IMBD-HD-DNS		
LS A.A.		
LS-CRM-F-GRN-SLI CHLK-FOSS FUS-PR SM VUG POR-DULL WHT MIN FLOR-NO VIS SHOW		
QUEEN SH 3198' (-1159')		HW 30 UNIT GAS INCRS
SH-BLK-CARB		
SH-RY-FRM-LMY-FOSS		
LS-TN-F-GRN-FOSS FRAGS-PR ISO SM VUG POR-DULL WHT MIN FLOR-NO VIS SHOW W/ CHRT-GRY-OPQ-FRSH		
SH-GRY-FRM-LMY		
LS-CRM-F-GRN-V-FOSS-FR INTER-GRN AND INTRA-PR POR-DULL WHT MIN FLOR-NO VIS SHOW		
LS-CRM-GRY-F-GRN-FOSS-HD-DNS W/ CHRT-GRY-OPQ-FRSH		
SH-GRY-FRM-LMY		
KING SH 3265' (-1226')		HW 35 UNIT GAS INCRS
SH-BLK-CARB		
LS-CRM-TN-F-GRN-FOSS-TR SM ISO VUG POR-MSTLY DNS-DULL WHT FLOR-NO VIS SHOW		
SH-DK GRY-SPLNTY-FOSS		
LS-TN-F-GRN-SLI CHLKY-FOSS-HD-DNS		
LS A.A. W/ CHRT-GRY-OPQ-FRSH		
LS-CRM-F-GRN-CHLKY-FOSS-OOL-SHLY-PR TO FR FOSS VUG POR-DULL WHT MIN FLOR-NO VIS SHOW		
LS-LT GRY-V-F-XLN-HD-DNS		
LS-CRM-F-GRN-FOSS FRAGS-HD-DNS		KB=2039
LS-A.A. CHLKY		
HEEBNER 3365' (-1326')		HW 38 UNIT GAS INCRS
SH-BLK-CARB		
SH-GRY-BLK-LMY		
TORONTO 3382 (-1343')		HW 45 UNIT GAS INCRS
LS-TN-GRY-F-XLN-FOSS-SHLY-TR SM PYR XLS IMBD-BRIT-MSTLY DNS W/ TR PP POR IP		
DOUGLAS SH 3396' (-1359')		MUD DATA @ 3393' WT. 8.8 VIS 48 FIL 7.2
SH-LT GRY-SFT-GUMMY		
SH-LT GRY-SFT-SILTY-HEM-GUMMY		
SLTSS-FRSTY GRY-F-GRN-SHLY-MICA-HEM		
SH-LT GRY-SFT-SILTY-GUMMY		
SH-DK GRY-FRM-BLK-LMY		
BRN LS 3456' (-1417')		
LS-DK BRN-V-F-XLN-HD-DNS		
LANSING/KC 3468' (-1429')		
LS-TN-F-XLN-BRIT-SM ISO VUG POR-DULL WHT FLOR-NO VIS CUT		
LS-TN-F-XLN-HD-DNS		
SH-LT GRY-BLK-LMY		
LS-GRY-V-F-XLN-SH GRY DISS-HD-DNS		
LS-OFF WHT-F-GRN-TR SUCRO-SM FOSS FRAGS-HD-DNS		
SH-GRY-SPLNTY		
LS-TN-GRY-F-GRN-FOSS-OOL-TR SH LT GRY IMBD-BRIT TO HD-DNS W/ CHRT AND PYR IN TRAY		HW 20 UNIT GAS INCRS
LS-CRM-F-XLN-TR FOSS-TR OOL-PR INTRA-PR POR-BRITE WHT FLOR-NO VIS CUT		
LS-TN-F-XLN-OOL-GD OOL-MOLDIC POR-DULL WHT FLOR-NO VIS CUT		
POOR SAMPLE		HW 28 UNIT GAS INCRS
SH-GGRY-SPLNTY		
LS-CRM-F-XLN-OOL-PR TO FR OOL-MOLDIC POR-NO VIS SHOW		
LS-TN-F-XLN-OOL-PR-OOL-MOLDIC POR-NO VIS SHOW		
LS-TN-F-XLN-OOL-HD-DNS		
LS-TN-F-XLN-OOL-GD TO FR OOL-MOLDIC POR-BRITE WHT FLOR-NO VIS CUT W/ CHRT-TRANS-OOL-FRSH		
LS-TN-F-XLN-OOL-HD-DNS		
LS A.A.		
LS-OFF WHT/GRY-F-XLN-FOSS-OOL-HD-DNS		
LS-OFF WHT-F-XLN-OOL-FR OOL-MOLDIC POR-NO VIS SHOW		
LS-GRY-F-XLN-FOSS-OOL-SHLY IP-HD-DNS		
SH-GRY-SPLNTY		
LS-OFF WHT-F-XLN-CHLKY-FOSS-PYR XLS IMBD-BRIT-DNS		
SH-GRY-SPLNTY		
LS-GRY-F-XLN-FOSS-HD-DNS		
POOR SAMPLE		
POOR SAMPLE		DST #3 3700'-3753' REC-10 FT DRILLING MUD IBLW-WK SURF BLW 7 MIN AND DIED FBLW-NO BLW 15/30/15/30 SIP-79.33-73.50 IFP-57.56-59.37 FFP-60.69-60.22 HP-1838.77-1837.83
B/KC 3698' (-1659')		
SH-GRY-SPLNTY		
SH-GRY-GUMMY		
VIOLA CHRT 3718' (-1679')		
CHRT-OFF WHT-OPQ-FRSH W/ SOME CHRT-OFF WHT-OPQ-TRIP-GD PP POR-LT BRN STN-VEL FLOR-GD STRM CUT-FREE OIL GAS BUB		HW 100 UNIT PLUS GAS INCRS
CHRT A.A.		
SH-RED-GRN-BLU-GRY-W/ CHRT-VARIG-OPQ-FRSH		MUD DATA @ 3753' WT. 9.4 VIS 48 FIL 9.6
SS-FRSTY BRN-M-GRN-TF-RNDED-WELL SRTED-DOLO CMT-LT BRN STN-NO VIS FLOR-FR STRM CUT-FREE OIL		MUD DATA @ 3787' MUD DATA @ 3827' WT. 9.4 WT. 9.25 VIS 54 VIS 45 FIL 8.8 FIL 9.6
SH-V-LT BLU-SFT-GUMMY-TR SND IMBD IP		
ARBUCKLE 3780' (-1741')		HW 100 PLUS GAS INCRS
DOLO-TN-V-F-GRN-SUCRO-CHLKY-F-INTER-GRN POR-LT BRN STN IP-NO VIS FLOR-FNT FLSH CUT		DST #4 3744'-3787' REC-5210 MCF/D 100 FT MUD 100 FT MUD 40% AND H2O 60%
DOLO-CRM-M-GRN-FR INTER-GRN POR-TR LT BRN STN-BRITE WHT FLOR-FNT FLSH CUT-GD ODOR		
DOLO-TN-M-GRN-FR INTER-GRN POR-SCATT LT BRN STN-BRITE WHT FLOR-V-FNT CUT-STRNG ODOR		
DOLO-TN-V-F-GRN-SUCRO-HD-DNS W/ LT BRN STN-BRITE FLOR-GD FLSH CUT		
DOLO-TN-M-CRS-GRN-BRIT-FR INTER-GRN POR-SCATT LT BRN STN-BRITE WHT FLOR-FR STRM CUT-GD ODOR		
DOLO-CRM-F-GRN-SUCRO-NO VIS STN-BRITE WHT FLOR-NO VIS CUT		IBLW-STRNG BLW BOB IN 2 MIN-YES BLWBK FBLW-STRNG BLW-GAS FLOW CHART-YES-BLWBK 3/60/45/90 SIP-1220.75-1213.46 IFP-821.23-614.75 FFP-701.1-688.97 1860.58-1875.1
DOLO-CRM-F-GRN-OOL-SUCRO-PR OOL-MOLDIC POR-TR LT BRN STN-BRITE WHT FLOR-FLSH CUT-GD ODOR		TIME PSIG MCF/D 5 MIN 141 4467.57 15 MIN 156 4898.8 25 MIN 167 5215.03 35 MIN 167 5215.03 45 MIN 167 5215.03
DOLO-TN-F-M-GRN-SUCRO-BRIT-ABUNDNT LT BRN STN IN TRAY-BRITE WHT FLOR-GD STM CUT-GD ODOR		MUD DATA @ 3867' WT. 9.4 VIS 51 FIL 8.0
DOLO-CRM-F-GRN-SUCRO-TR LT BRN STN IP TO NO VIS STN-SCATT BRITE WHT FLOR-FLSH CUT-GD ODOR		DST #5 3788'-3797' REC-110 H2O MUD/1000 H2O CHLORIDES 24,000 IBLW-STRNG BLW BLT BOB IN 30 SEC/NO BLWBK FBLW-STRNG BLW BLT BOB IN 1 MIN/NO BLWBK 3/60/15/60 SIP-1229.51-1225.75 IFP-254-187.76 FFP-250.85-531.11 HP-1917.68-1823.96
DOLO-TN-F-GRN-HD-DNS		
DOLO-CRM-F-M-GRN-NO VIS STN-BRITE WHT FLOR IP-NO VIS CUT-FNT-ODOR		
DOLO-OFF WHT-F-GRN-HD-DNS W/ PYR XLS IMBD AND CHRT-OFF WHT-OPQ-FRSH		
DOLO A.A.		
DOLO-TN-F-GRN-XLN-HD-DNS W/ CHRT-OFF WHT-OPQ-FRSH		
DOLO-CRM-F-M-GRN-PR INTER-GRN POR-NO VIS SHOW W/ CHRT-TN-OPQ-FRSH		
DOLO-OFF WHT-F-GRN-HD-DNS W/ CHRT AND PYR IN TRAY		DST #6 3847'-3857' REC-50 FT MUDDY GASSY OIL (25% GAS, 40% OIL, 25% MUD, 10% H2O) 180' GASSY FROTHY OIL (65% GAS, 30% OIL, 3% MUD, 3% H2O) 180' MUD 5% AND H2O 95% 120' H2O CHLORIDES 33000
DOLO-TN-V-F-XLN-BLOCKY-HD-DNS W/ CHRT-OFF WHT-OPQ-FRSH		
DOLO-TN-F-GRN-CHLKY-BRIT-PP POR-NO VIS SHOW W/ CHRT-TRANS-OOL-FRSH		
DOLO-CRM-F-GRN-V-SM-OOL-PR TO FR SM OOL-MOLDIC POR-NO VIS SHOW		
DOLO-TN-V-F-XLN-HD-DNS W/ CHRT-OFF WHT-OPQ-FRSH		
DOLO-A.A. CHLKY		DST #7 3858'-3867' REC-180' SLI OIL AND GAS CUT MUDDY H2O (25% GAS, 3% OIL, 15% MUD, 57% H2O) 120' SLI OIL CUT H2O (15% GAS, 1% OIL, 84% MUD) 1825' H2O CHLORIDES 32000 IBLW-STRNG BLW BLT BOB IN 30 SECS FBLW-GD BLW BLT BOB 1 MIN 3/60/30/60 SIP-1254-1252 IFP-245-235 FFP-279-971 HP-1852-1862