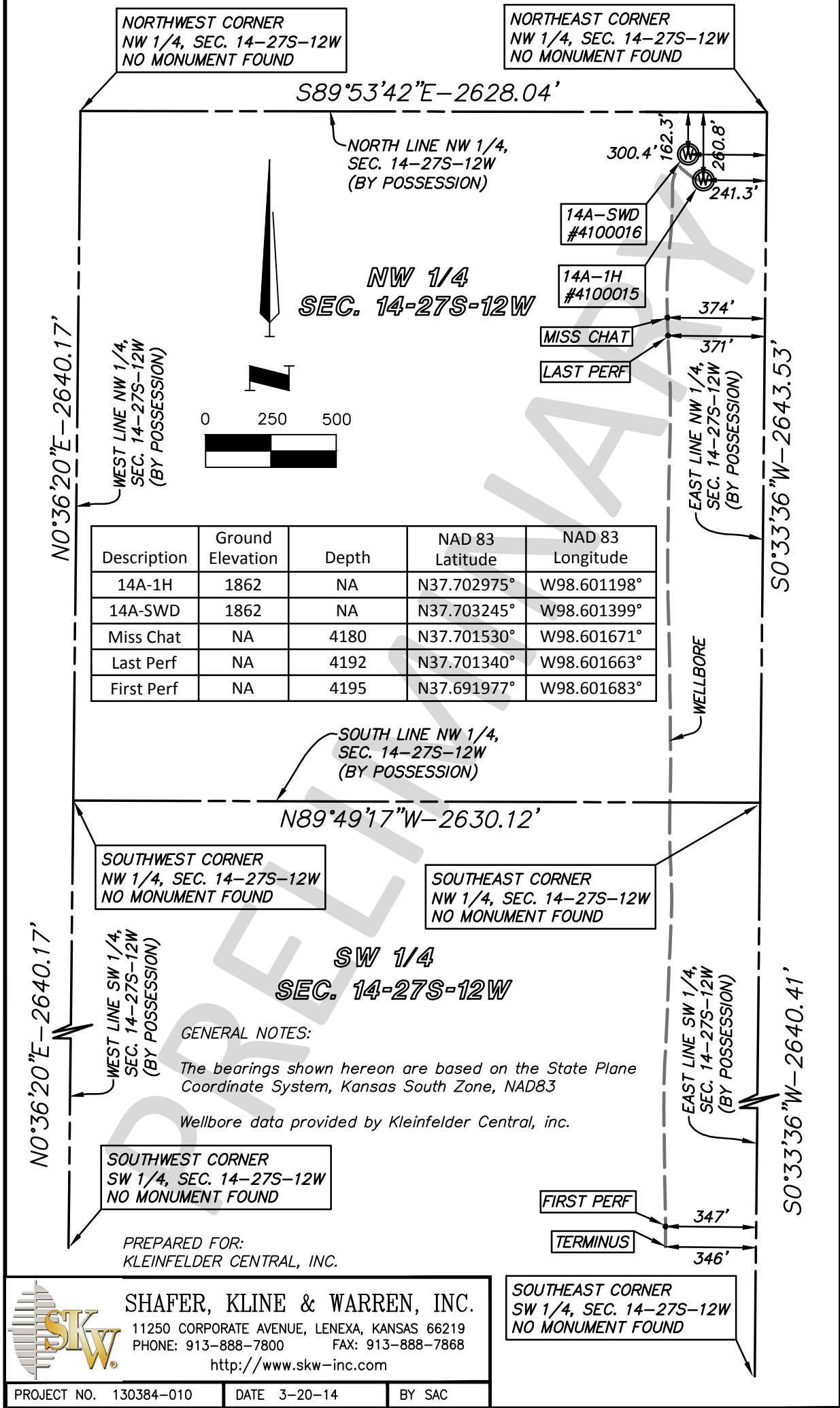


**WELL COMPLETION EXHIBIT  
GREENGROUP  
SEC 14, T 27 S, R 12 W  
PRATT COUNTY, KANSAS**



Description	Ground Elevation	Depth	NAD 83 Latitude	NAD 83 Longitude
14A-1H	1862	NA	N37.702975°	W98.601198°
14A-SWD	1862	NA	N37.703245°	W98.601399°
Miss Chat	NA	4180	N37.701530°	W98.601671°
Last Perf	NA	4192	N37.701340°	W98.601663°
First Perf	NA	4195	N37.691977°	W98.601683°

**GENERAL NOTES:**

The bearings shown hereon are based on the State Plane Coordinate System, Kansas South Zone, NAD83

Wellbore data provided by Kleinfelder Central, inc.

PREPARED FOR:  
KLEINFELDER CENTRAL, INC.



**SHAFFER, KLINE & WARREN, INC.**  
11250 CORPORATE AVENUE, LENEXA, KANSAS 66219  
PHONE: 913-888-7800 FAX: 913-888-7868  
<http://www.skw-inc.com>

**SOUTHEAST CORNER  
SW 1/4, SEC. 14-27S-12W  
NO MONUMENT FOUND**