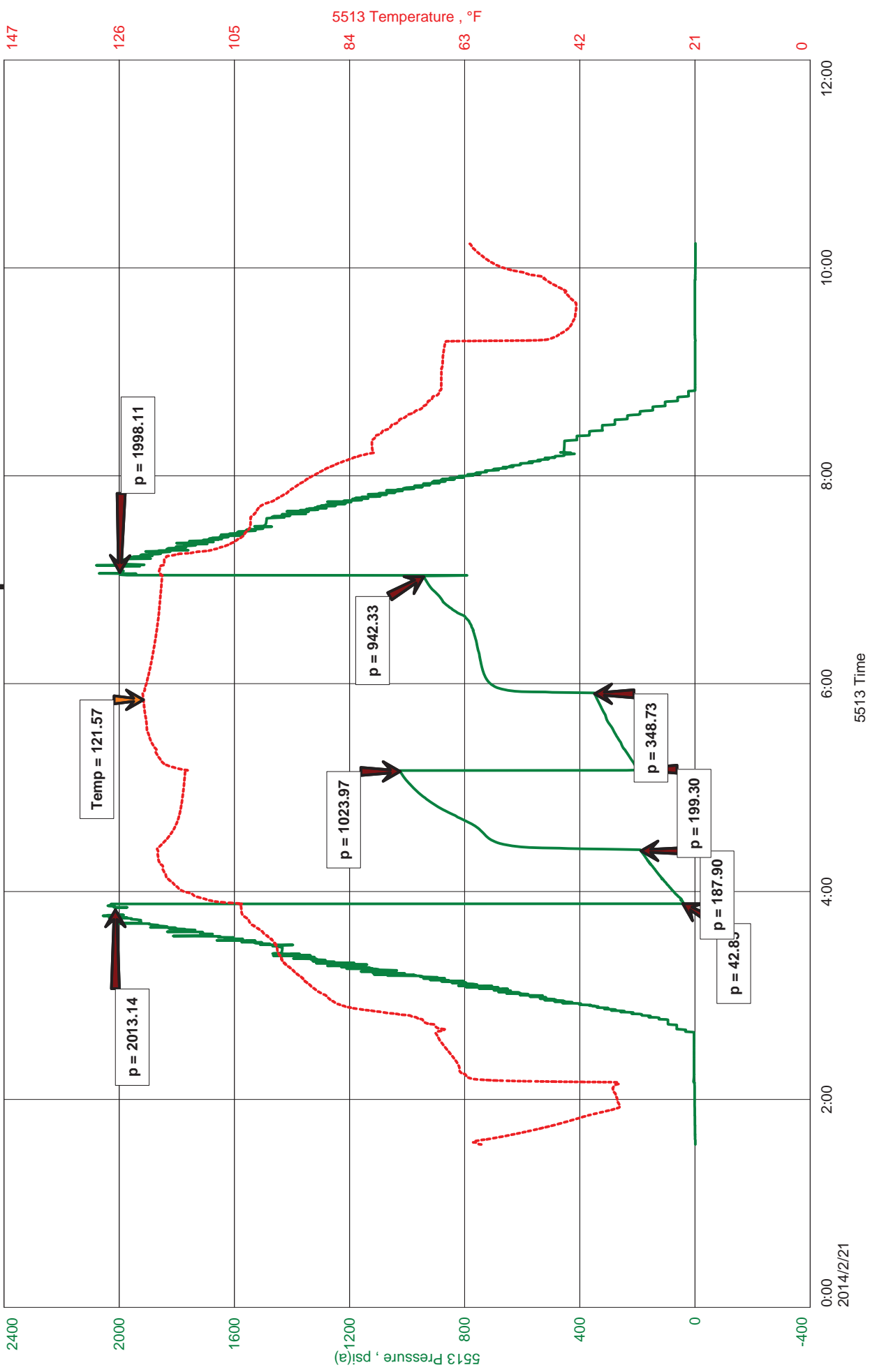


New Gulf Operating LLC  
DST #3 Lansing H-I 4174-4240  
Start Test Date: 2014/02/21  
Final Test Date: 2014/02/21

#3-10 St Joseph  
Formation: Lansing H-I  
Pool: Wildcat  
Job Number: K090

# #3-10 St Joseph





**JASON MCLEMORE**

**CELL # 620-617-0527**

**General Information**

<b>Company Name</b>	New Gulf Operating LLC	<b>Job Number</b>	K090
<b>Contact</b>	Jim Henkle	<b>Representative</b>	Jason McLemore
<b>Well Name</b>	#3-10 St Joseph	<b>Well Operator</b>	New Gulf Operating LLC
<b>Unique Well ID</b>	DST #3 Lansing H-I 4174-4240	<b>Prepared By</b>	Jason McLemore
<b>Surface Location</b>	10-12-32 Logan	<b>Qualified By</b>	John Goldsmith
<b>Field</b>	Wilgcat	<b>Test Unit</b>	#7
<b>Well Type</b>	Vertical		

**Test Information**

<b>Test Type</b>	Drill Stem Test	<b>Representative</b>	Jason McLemore
<b>Formation</b>	Lansing H-I	<b>Well Operator</b>	New Gulf Operating LLC
<b>Well Fluid Type</b>	01 Oil	<b>Report Date</b>	2014/02/21
<b>Test Purpose (AEUB)</b>	Initial Test	<b>Prepared By</b>	Jason McLemore
<b>Start Test Date</b>	2014/02/21	<b>Start Test Time</b>	01:34:00
<b>Final Test Date</b>	2014/02/21	<b>Final Test Time</b>	10:15:00

**Test Results**

**RECOVERED:**

610 Gassy Oil. 20% Gas, 80% Oil  
 240 VSOCMW, 2% Oil, 58% Water, 40% Mud

1670' Gas In Pipe

Gravity: 40.5

CHLORIDES: 47000  
PH: 7



**DIAMOND TESTING**  
P.O. Box 157  
**HOISINGTON, KANSAS 67544**  
(800) 542-7313  
**DRILL-STEM TEST TICKET**  
FILE: 3stjodst3

TIME ON: 1:34 AM  
TIME OFF: 10:15 AM

Company New Gulf Operating, LLC Lease & Well No. #3-10 St Joseph  
Contractor Val #4 Charge to New Gulf Operating, LLC  
Elevation KB 3032 Formation Lansing E-F Effective Pay \_\_\_\_\_ Ft. Ticket No. K090  
Date 2-21-14 Sec. 10 Twp. 12 S Range 32 W County Logan State KANSAS  
Test Approved By John Goldsmith Diamond Representative Jason McLemore

Formation Test No. 3 Interval Tested from 4174 ft. to 4240 ft. Total Depth 4240 ft.  
Packer Depth 4169 ft. Size 6 3/4 in. Packer depth \_\_\_\_\_ ft. Size 6 3/4 in.  
Packer Depth 4174 ft. Size 6 3/4 in. Packer depth \_\_\_\_\_ ft. Size 6 3/4 in.

Depth of Selective Zone Set \_\_\_\_\_

Top Recorder Depth (Inside) 4155 ft. Recorder Number 5513 Cap. 5000 P.S.I.  
Bottom Recorder Depth (Outside) 4256 ft. Recorder Number 5588 Cap. 6000 P.S.I.  
Below Straddle Recorder Depth \_\_\_\_\_ ft. Recorder Number \_\_\_\_\_ Cap. \_\_\_\_\_ P.S.I.

Mud Type Chemical Viscosity 45 Drill Collar Length 0 ft. I.D. 2 1/4 in.  
Weight 9.2 Water Loss 6.8 cc. Weight Pipe Length 0 ft. I.D. 2 7/8 in.  
Chlorides 2500 P.P.M. Drill Pipe Length 4141 ft. I.D. 3 1/2 in.  
Jars: Make STERLING Serial Number 6 Test Tool Length 33 ft. Tool Size 3 1/2-IF in.  
Did Well Flow? NO Reversed Out No Anchor Length 66 ft. Size 4 1/2-FH in.  
Main Hole Size 7 7/8 Tool Joint Size 4 1/2 XH in. 31' DP in Anchor Surface Choke Size 1 in. Bottom Choke Size 5/8 in.

Blow: 1st Open: Strong, BOB in 1Min,45 Seconds, Blowback BOB in 8 Min.  
2nd Open: Strong, BOB in 2-1/2Min., Blowback BOB in 5 Min.

Recovered 610 ft. of Gassy Oil  
Recovered 240 ft. of VSOCMW, 2% Oil, 58% Water, 40% Mud  
Recovered 850 ft. of TOTAL FLUID

Recovered _____ ft. of <u>1670' Gas In Pipe</u>	
Recovered _____ ft. of <u>CHLORIDES: 47,000</u>	Price Job
Recovered _____ ft. of <u>PH: 7</u>	Other Charges
Remarks: <u>Gravity: 40.5</u>	Insurance
	Total

Time Set Packer(s) 3:55 AM A.M. P.M. Time Started Off Bottom 6:55 AM A.M. P.M. Maximum Temperature 122

Initial Hydrostatic Pressure..... (A) 2013 P.S.I.  
Initial Flow Period..... Minutes 30 (B) 43 P.S.I. to (C) 188 P.S.I.  
Initial Closed In Period..... Minutes 45 (D) 1024 P.S.I.  
Final Flow Period..... Minutes 45 (E) 199 P.S.I. to (F) 349 P.S.I.  
Final Closed In Period..... Minutes 60 (G) 942 P.S.I.  
Final Hydrostatic Pressure..... (H) 1998 P.S.I.

Diamond Testing shall not be liable for damages of any kind to the property or personnel of the one for whom a test is made or for any loss suffered or sustained, directly or indirectly, through the use of its equipment, or its statement or opinion concerning the result of any test. Tools lost or damaged in the hole shall be paid for at cost by the party for whom the test is made.