



DRILL STEM TEST REPORT

Prepared For: **BlackTea Oil**

1011 Centennial Blvd. Ste. Hays Kansas
67601

ATTN: Anthony Steinke

Krebs O

29-14s-32w Logan

Start Date: 2014.01.06 @ 06:47:00

End Date: 2014.01.08 @ 02:41:28

Job Ticket #: 19165 DST #: 1

Superior Testers Enterprises LLC
PO Box 138 Great Bend KS 67530
1-800-792-6902

Printed: 2014.01.07 @ 00:21:30

BlackTea Oil
29-14s-32w Logan
Krebs O
DST # 1
Kansas City
2014.01.06



DRILL STEM TEST REPORT

BlackTea Oil

29-14s-32w Logan

1011 Centennial Blvd. Ste. Hays Kansas 67601

Krebs O

Job Ticket: 19165

DST#: 1

ATTN: Anothony Steinke

Test Start: 2014.01.06 @ 06:47:00

GENERAL INFORMATION:

Formation: **Kansas City**

Deviated: No Whipstock: ft (KB)

Time Tool Opened: 22:10:58

Time Test Ended: 02:41:28

Test Type: Conventional Bottom Hole (Initial)

Tester: Dustin Ellis

Unit No: 3315-Scott City-45

Interval: 3845.00 ft (KB) To 3913.00 ft (KB) (TVD)

Reference Elevations: 2669.00 ft (KB)

Total Depth: 3913.00 ft (KB) (TVD)

2662.00 ft (CF)

Hole Diameter: 7.88 inches Hole Condition: Fair

KB to GR/CF: 7.00 ft

Serial #: 8524 Outside

Press @ RunDepth: 164.80 psia @ 3910.08 ft (KB)

Capacity: 5000.00 psia

Start Date: 2014.01.06

End Date: 2014.01.08

Last Calib.: 2014.01.06

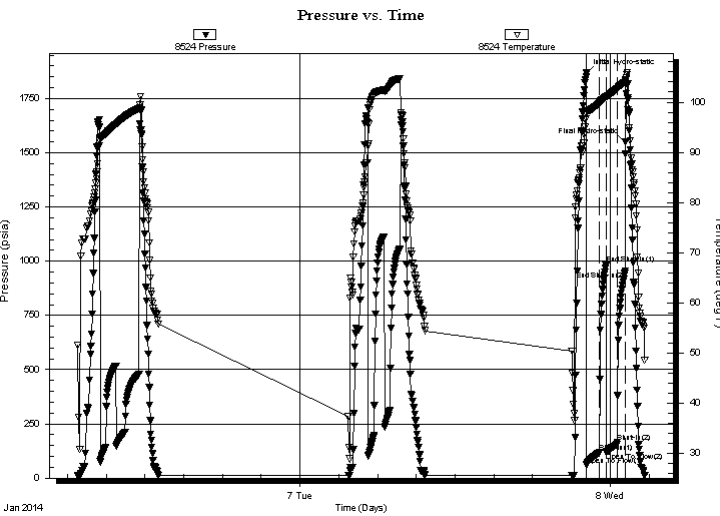
Start Time: 06:48:00

End Time: 02:41:27

Time On Btm: 2014.01.07 @ 22:10:28

Time Off Btm: 2014.01.08 @ 01:09:58

TEST COMMENT: 1st Open 60 minutes Good building blow built to the bottom of a 5 gallon bucket of water in 43 minutes..
 1st Shut in 30 minute No blow back
 2nd Open 60 minutes Good building blow built to 7 inches .
 2nd Shut in 30 minutes No blow back



PRESSURE SUMMARY

Time (Min.)	Pressure (psia)	Temp (deg F)	Annotation
0	1866.82	97.75	Initial Hydro-static
1	61.23	97.80	Open To Flow (1)
60	118.37	99.83	Shut-In(1)
91	988.52	101.17	End Shut-In(1)
91	120.31	101.05	Open To Flow (2)
143	164.80	102.70	Shut-In(2)
179	954.71	103.99	End Shut-In(2)
180	1548.67	104.18	Final Hydro-static

Recovery

Length (ft)	Description	Volume (bbl)
240.00	Very lightly oil spotted mud mud 100%	2.94

Gas Rates

Choke (inches)	Pressure (psia)	Gas Rate (Mcf/d)



DRILL STEM TEST REPORT

BlackTea Oil

29-14s-32w Logan

1011 Centennial Blvd. Ste. Hays Kansas 67601

Krebs O

Job Ticket: 19165

DST#: 1

ATTN: Anothony Steinke

Test Start: 2014.01.06 @ 06:47:00

GENERAL INFORMATION:

Formation: **Kansas City**

Deviated: No Whipstock: ft (KB)

Time Tool Opened: 22:10:58

Time Test Ended: 02:41:28

Test Type: Conventional Bottom Hole (Initial)

Tester: Dustin Ellis

Unit No: 3315-Scott City-45

Interval: 3845.00 ft (KB) To 3913.00 ft (KB) (TVD)

Reference Elevations: 2669.00 ft (KB)

Total Depth: 3913.00 ft (KB) (TVD)

2662.00 ft (CF)

Hole Diameter: 7.88 inches Hole Condition: Fair

KB to GR/CF: 7.00 ft

Serial #: 6806

Inside

Press @ RunDepth: 950.39 psia @ 3909.08 ft (KB)

Capacity: 5000.00 psia

Start Date: 2014.01.06

End Date: 2014.01.06

Last Calib.: 2014.01.06

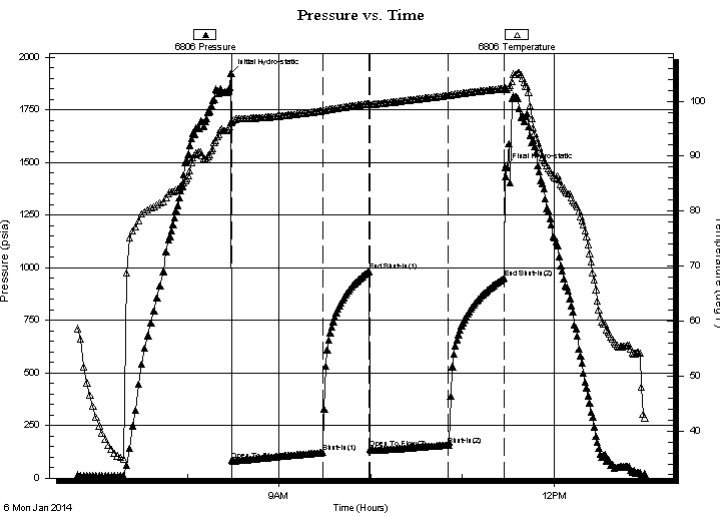
Start Time: 06:48:00

End Time: 13:00:00

Time On Btm: 2014.01.06 @ 08:28:30

Time Off Btm: 2014.01.06 @ 11:28:00

TEST COMMENT: 1st Open 60 minutes Good building blow built to the bottom of a 5 gallon bucket of water in 43 minutes..
 1st Shut in 30 minute No blow back
 2nd Open 60 minutes Good building blow built to 7 inches .
 2nd Shut in 30 minutes No blow back



PRESSURE SUMMARY

Time (Min.)	Pressure (psia)	Temp (deg F)	Annotation
0	1924.71	96.19	Initial Hydro-static
1	83.17	96.29	Open To Flow (1)
60	122.85	98.23	Shut-In(1)
91	984.40	99.53	End Shut-In(1)
91	140.00	99.38	Open To Flow (2)
143	157.97	101.03	Shut-In(2)
179	950.39	102.28	End Shut-In(2)
180	1477.69	102.39	Final Hydro-static

Recovery

Length (ft)	Description	Volume (bbl)
240.00	Very lightly oil spotted mud mud 100%	2.94

Gas Rates

	Choke (inches)	Pressure (psia)	Gas Rate (Mcf/d)



DRILL STEM TEST REPORT

TOOL DIAGRAM

BlackTea Oil

29-14s-32w Logan

1011 Centennial Blvd. Ste. Hays Kansas 67601

Krebs O

Job Ticket: 19165

DST#: 1

ATTN: Anothony Steinke

Test Start: 2014.01.06 @ 06:47:00

Tool Information

Drill Pipe:	Length: 3816.00 ft	Diameter: 3.80 inches	Volume: 53.53 bbl	Tool Weight: 2000.00 lb
Heavy Wt. Pipe:	Length: 0.00 ft	Diameter: 2.25 inches	Volume: 0.00 bbl	Weight set on Packer: 20000.00 lb
Drill Collar:	Length: 30.70 ft	Diameter: 0.00 inches	Volume: 0.00 bbl	Weight to Pull Loose: 90000.00 lb
			<u>Total Volume: 53.53 bbl</u>	Tool Chased 3.00 ft
Drill Pipe Above KB:	21.70 ft			String Weight: Initial 68000.00 lb
Depth to Top Packer:	3845.00 ft			Final 69000.00 lb
Depth to Bottom Packer:	ft			
Interval between Packers:	68.08 ft			
Tool Length:	88.08 ft			
Number of Packers:	2	Diameter: 6.75 inches		
Tool Comments:				

Tool Description	Length (ft)	Serial No.	Position	Depth (ft)	Accum. Lengths
------------------	-------------	------------	----------	------------	----------------

Shut-In Tool	5.00			3830.00	
Hydraulic Tool	5.00			3835.00	
Packer	5.00			3840.00	20.00 Bottom Of Top Packer
Packer	5.00			3845.00	
Anchor	5.00			3850.00	
Change Over Sub	0.75			3850.75	
Drill Pipe	30.58			3881.33	
Change Over Sub	0.75			3882.08	
Anchor	26.00			3908.08	
Recorder	1.00	6806	Inside	3909.08	
Recorder	1.00	8524	Outside	3910.08	
Bull Plug	3.00			3913.08	68.08 Bottom Packers & Anchor

Total Tool Length: 88.08



DRILL STEM TEST REPORT

FLUID SUMMARY

BlackTea Oil

29-14s-32w Logan

1011 Centennial Blvd. Ste. Hays Kansas 67601

Krebs O

Job Ticket: 19165

DST#: 1

ATTN: Anothony Steinke

Test Start: 2014.01.06 @ 06:47:00

Mud and Cushion Information

Mud Type: Gel Chem

Cushion Type:

Oil API:

deg API

Mud Weight: 9.00 lb/gal

Cushion Length:

ft

Water Salinity:

ppm

Viscosity: 4.60 sec/qt

Cushion Volume:

bbbl

Water Loss: 55.94 in³

Gas Cushion Type:

Resistivity: ohm.m

Gas Cushion Pressure:

psia

Salinity: 4000.00 ppm

Filter Cake: 1.00 inches

Recovery Information

Recovery Table

Length ft	Description	Volume bbl
240.00	Very lightly oil spotted mud mud 100%	2.936

Total Length: 240.00 ft Total Volume: 2.936 bbl

Num Fluid Samples: 0

Num Gas Bombs: 0

Serial #:

Laboratory Name:

Laboratory Location:

Recovery Comments:

Pressure vs. Time

