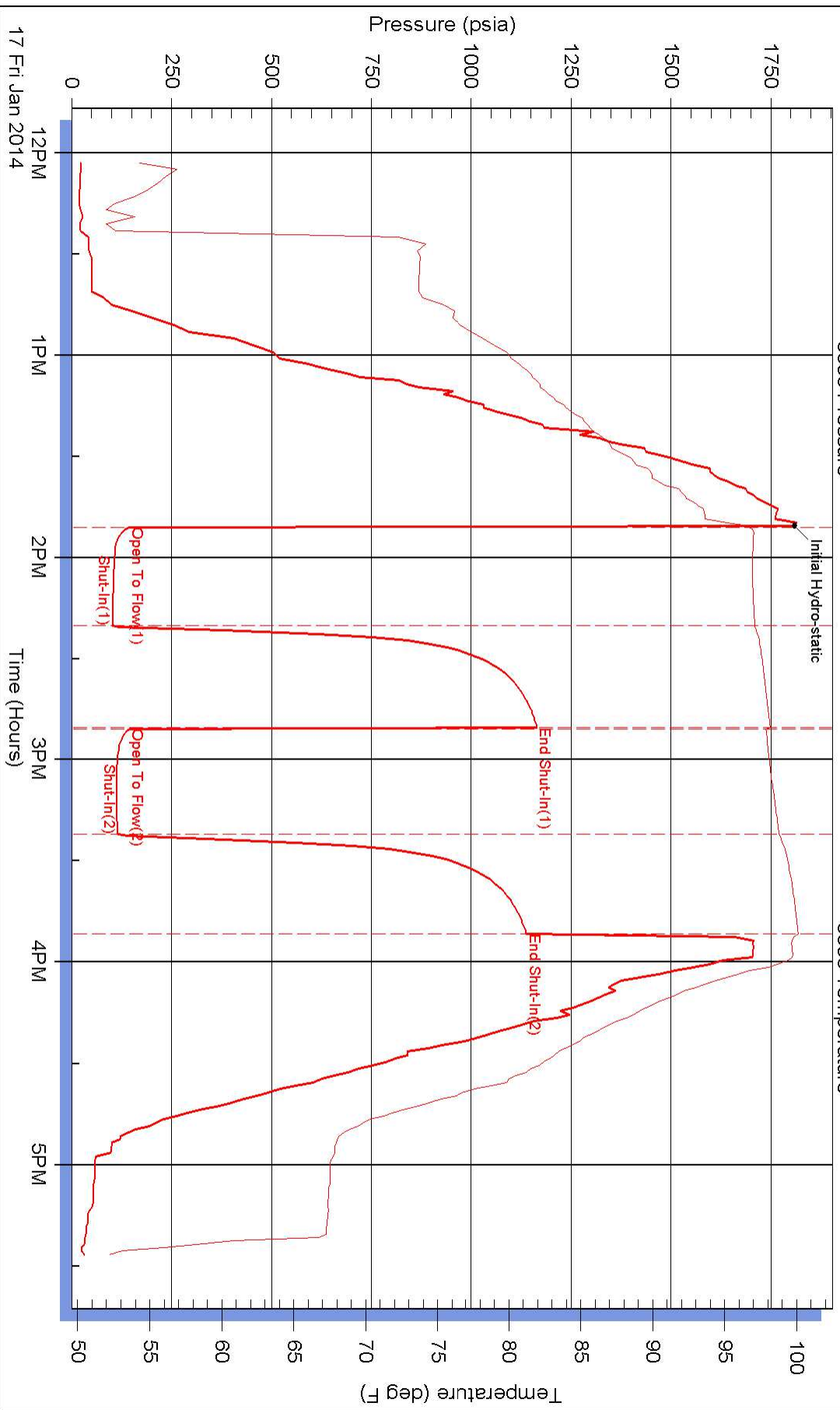
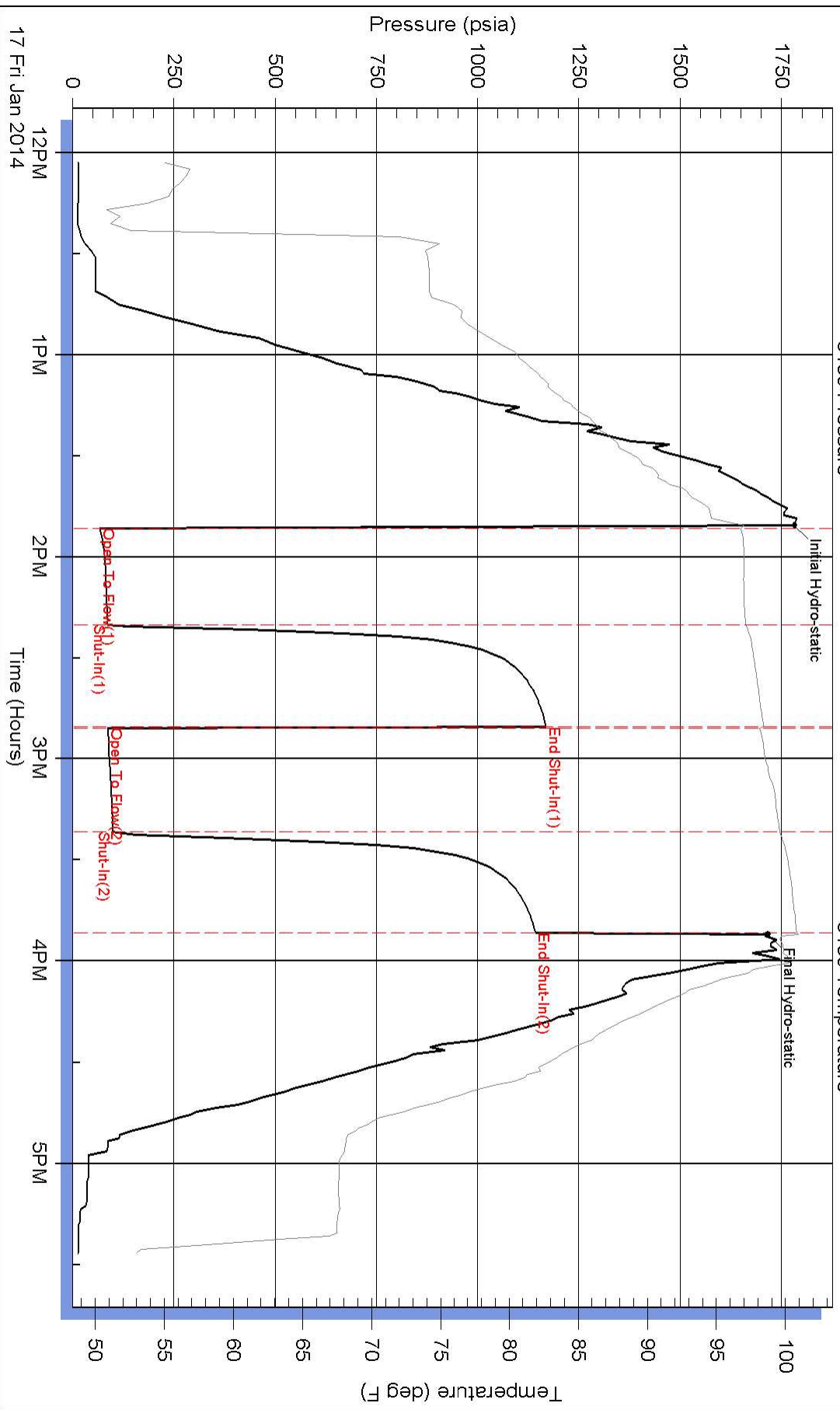


Pressure vs. Time



Pressure vs. Time





DRILL STEM TEST REPORT

FLUID SUMMARY

Black Tea Oil

29-14-32w-Logan

1011 Centennial Blvd. Suit B
Hays Kansas 67601

Krebs P

Job Ticket: 19184

DST#: 1

ATTN: Anthony Steinke

Test Start: 2014.01.17 @ 12:02:00

Mud and Cushion Information

Mud Type: Gel Chem

Cushion Type:

Oil API:

deg API

Mud Weight: 9.00 lb/gal

Cushion Length:

ft

Water Salinity:

ppm

Viscosity: 50.00 sec/qt

Cushion Volume:

bbbl

Water Loss: 6.40 in³

Gas Cushion Type:

Resistivity: ohm.m

Gas Cushion Pressure:

psia

Salinity: 3000.00 ppm

Filter Cake: 1.00 inches

Recovery Information

Recovery Table

Length ft	Description	Volume bbl
71.00	Oil spotted mud Mud 99% Oil 1%	0.718

Total Length: 71.00 ft Total Volume: 0.718 bbl

Num Fluid Samples: 0

Num Gas Bombs: 0

Serial #:

Laboratory Name:

Laboratory Location:

Recovery Comments:



DRILL STEM TEST REPORT

TOOL DIAGRAM

Black Tea Oil

29-14-32w-Logan

1011 Centennial Blvd. Suit B
Hays Kansas 67601

Krebs P

Job Ticket: 19184

DST#: 1

ATTN: Anthony Steinke

Test Start: 2014.01.17 @ 12:02:00

Tool Information

Drill Pipe:	Length: 3587.00 ft	Diameter: 3.80 inches	Volume: 50.32 bbl	Tool Weight: 2000.00 lb
Heavy Wt. Pipe:	Length: 0.00 ft	Diameter: 0.00 inches	Volume: 0.00 bbl	Weight set on Packer: 20000.00 lb
Drill Collar:	Length: 30.55 ft	Diameter: 2.25 inches	Volume: 0.15 bbl	Weight to Pull Loose: 80000.00 lb
			Total Volume: 50.47 bbl	Tool Chased 1.00 ft
Drill Pipe Above KB:	9.55 ft			String Weight: Initial 55000.00 lb
Depth to Top Packer:	3636.00 ft			Final 55000.00 lb
Depth to Bottom Packer:	ft			
Interval between Packers:	76.48 ft			
Tool Length:	104.48 ft			
Number of Packers:	2	Diameter: 6.75 inches		

Tool Comments:

Tool Description	Length (ft)	Serial No.	Position	Depth (ft)	Accum. Lengths
------------------	-------------	------------	----------	------------	----------------

Shut-In Tool	5.00			3613.00	
Hydraulic Tool	5.00			3618.00	
Jars	6.00			3624.00	
Safety Joint	2.00			3626.00	
Packer	5.00			3631.00	28.00 Bottom Of Top Packer
Packer	5.00			3636.00	
Perforations	5.00			3641.00	
C.O. Sub	0.75			3641.75	
Drill Pipe	30.98			3672.73	
C.O. Sub	0.75			3673.48	
Perforations	34.00			3707.48	
Recorder	1.00	6806		3708.48	
Recorder	1.00	8159		3709.48	
Bullnose	3.00			3712.48	76.48 Bottom Packers & Anchor

Total Tool Length: 104.48



DRILL STEM TEST REPORT

Black Tea Oil

29-14-32w-Logan

1011 Centennial Blvd. Suit B
Hays Kansas 67601

Krebs P

Job Ticket: 19184

DST#: 1

ATTN: Anthony Steinke

Test Start: 2014.01.17 @ 12:02:00

GENERAL INFORMATION:

Formation: **KC-B-C-D**

Deviated: No Whipstock: ft (KB)

Time Tool Opened: 13:51:30

Time Test Ended: 17:26:30

Test Type: Conventional Bottom Hole (Initial)

Tester: Dustin Ellis

Unit No: 3315-Scot City-

Interval: 3636.00 ft (KB) To 3712.00 ft (KB) (TVD)

Reference Elevations: 2661.00 ft (KB)

Total Depth: 3712.00 ft (KB) (TVD)

2654.00 ft (CF)

Hole Diameter: 7.88 inches Hole Condition: Fair

KB to GR/CF: 7.00 ft

Serial #: 6806

Press @ RunDepth: 1138.52 psia @ 3708.48 ft (KB)

Capacity: 5000.00 psia

Start Date: 2014.01.17

End Date: 2014.01.17

Last Calib.: 2014.01.15

Start Time: 12:02:00

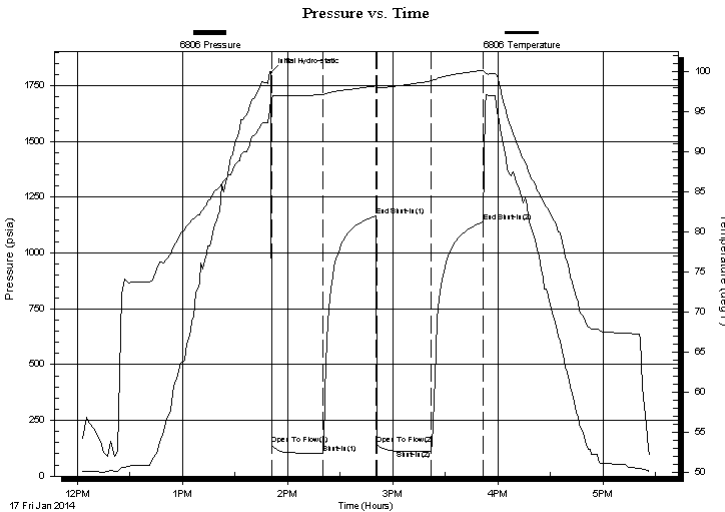
End Time: 17:26:30

Time On Btm: 2014.01.17 @ 13:50:30

Time Off Btm:

TEST COMMENT: 1st Open 30 minutes Fair building blow built to 3.5 inches.
1st Shut in 30 minutes No blow back
2nd Open 30 minutes Fair building blow built to 2.5 inches.
2nd Shut in 30 minutes No blow back

PRESSURE SUMMARY



Time (Min.)	Pressure (psia)	Temp (deg F)	Annotation
0	1808.24	96.68	Initial Hydro-static
1	144.22	96.65	Open To Flow (1)
30	102.42	97.10	Shut-In(1)
60	1165.22	98.16	End Shut-In(1)
61	143.99	97.86	Open To Flow (2)
92	115.68	98.79	Shut-In(2)
121	1138.52	100.11	End Shut-In(2)

Recovery

Gas Rates

Length (ft)	Description	Volume (bbl)
71.00	Oil spotted mud Mud 99% Oil 1%	0.72

	Choke (inches)	Pressure (psia)	Gas Rate (Mcf/d)



DRILL STEM TEST REPORT

Black Tea Oil
 1011 Centennial Blvd. Suit B
 Hays Kansas 67601
 ATTN: Anthony Steinke

29-14-32w-Logan
Krebs P
 Job Ticket: 19184 **DST#: 1**
 Test Start: 2014.01.17 @ 12:02:00

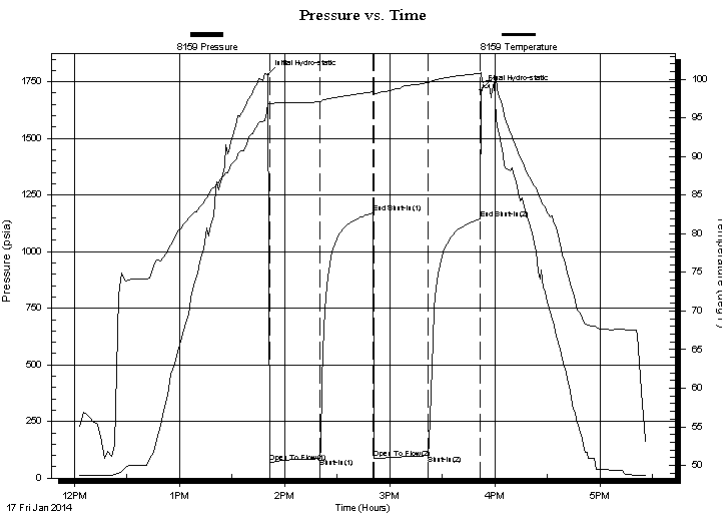
GENERAL INFORMATION:

Formation: KC-B-C-D		Test Type: Conventional Bottom Hole (Initial)
Deviated: No Whipstock:	ft (KB)	Tester: Dustin Ellis
Time Tool Opened: 13:51:30		Unit No: 3315-Scot City-
Time Test Ended: 17:26:30		
Interval: 3636.00 ft (KB) To 3712.00 ft (KB) (TVD)		Reference Elevations: 2661.00 ft (KB)
Total Depth: 3712.00 ft (KB) (TVD)		2654.00 ft (CF)
Hole Diameter: 7.88 inches	Hole Condition: Fair	KB to GR/CF: 7.00 ft

Serial #: 8159

Press @ RunDepth: 99.18 psia @ 3709.48 ft (KB)	Capacity: 5000.00 psia
Start Date: 2014.01.17	End Date: 2014.01.17
Start Time: 12:02:00	End Time: 17:26:30
	Last Calib.: 2014.01.15
	Time On Btm: 2014.01.17 @ 13:50:30
	Time Off Btm: 2014.01.17 @ 15:52:00

TEST COMMENT: 1st Open 30 minutes Fair building blow built to 3.5 inches.
 1st Shut in 30 minutes No blow back
 2nd Open 30 minutes Fair building blow built to 2.5 inches.
 2nd Shut in 30 minutes No blow back



PRESSURE SUMMARY

Time (Min.)	Pressure (psia)	Temp (deg F)	Annotation
0	1780.87	97.00	Initial Hydro-static
1	68.43	96.77	Open To Flow (1)
30	86.03	97.11	Shut-In(1)
60	1169.81	98.41	End Shut-In(1)
61	87.05	98.14	Open To Flow (2)
91	99.18	99.58	Shut-In(2)
121	1143.59	100.81	End Shut-In(2)
122	1714.85	100.91	Final Hydro-static

Recovery

Length (ft)	Description	Volume (bbl)
71.00	Oil spotted mud Mud 99% Oil 1%	0.72

Gas Rates

Choke (inches)	Pressure (psia)	Gas Rate (Mcf/d)



DRILL STEM TEST REPORT

Prepared For: **Black Tea Oil**

1011 Centennial Blvd. Suit B
Hays Kansas 67601

ATTN: Anthony Steinke

Krebs P

29-14-32w-Logan

Start Date: 2014.01.17 @ 12:02:00

End Date: 2014.01.17 @ 17:26:30

Job Ticket #: 19184 DST #: 1

Superior Testers Enterprises LLC
PO Box 138 Great Bend KS 67530
1-800-792-6902

Printed: 2014.01.15 @ 17:33:29