



## DRILL STEM TEST REPORT

Prepared For: **Black Tea Oil L.L.C**

1011 Centennial Blvd Ste B Hays KS 67601

ATTN: Kevin Bailey

### **Krebs R #1**

### **26-14-32 Logan**

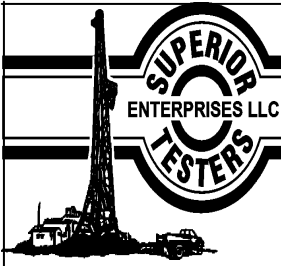
Start Date: 2014.01.21 @ 17:07:00

End Date: 2014.01.22 @ 01:11:30

Job Ticket #: 19126                      DST #: 2

Superior Testers Enterprises LLC  
PO Box 138 Great Bend KS 67530  
1-800-792-6902

Printed: 2014.01.22 @ 01:33:38



# DRILL STEM TEST REPORT

Black Tea Oil L.L.C

**26-14-32 Logan**

1011 Centennial Blvd Ste B Hays KS 67601

**Krebs R #1**

Job Ticket: 19126

**DST#: 2**

ATTN: Kevin Bailey

Test Start: 2014.01.21 @ 17:07:00

## GENERAL INFORMATION:

Formation:

Deviated: No Whipstock: ft (KB)

Time Tool Opened: 18:56:30

Time Test Ended: 01:11:30

Test Type: Conventional Bottom Hole (Initial)

Tester: Jared Scheck

Unit No: 3335-50-Scott City

**Interval: 4100.00 ft (KB) To 4174.00 ft (KB) (TVD)**

Reference Elevations: 2680.00 ft (KB)

Total Depth: 4174.00 ft (KB) (TVD)

2671.00 ft (CF)

Hole Diameter: 7.88 inches Hole Condition: Fair

KB to GR/CF: 9.00 ft

**Serial #: 6731**

**Inside**

Press@RunDepth: 564.90 psia @ 4170.00 ft (KB)

Capacity: 5000.00 psia

Start Date: 2014.01.21

End Date:

2014.01.22

Last Calib.:

2014.01.22

Start Time: 17:07:00

End Time:

01:11:30

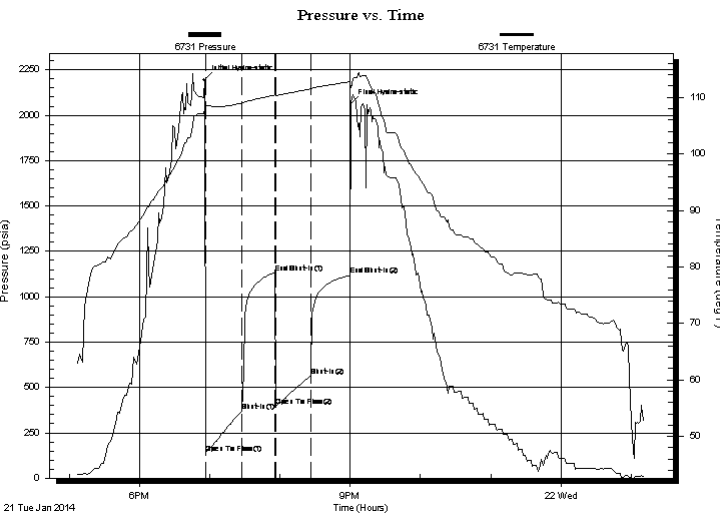
Time On Btm:

2014.01.21 @ 18:55:30

Time Off Btm:

2014.01.21 @ 21:00:30

**TEST COMMENT:** 1st Opening 30 Minutes-Strong blow built bottom of bucket in 2 3/4 minutes  
 1st Shut-in 30 Minutes-Bottom of bucket  
 2nd Opening 30 Minutes-Strong blow built bottom of bucket in 3 1/4 minutes  
 2nd Shut-in 30 Minutes-Bottom of bucket



## PRESSURE SUMMARY

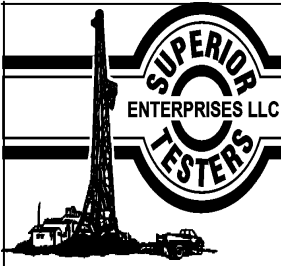
Time (Min.)	Pressure (psia)	Temp (deg F)	Annotation
0	2194.99	107.78	Initial Hydro-static
1	137.05	108.50	Open To Flow (1)
32	367.15	108.97	Shut-In(1)
60	1133.09	110.42	End Shut-In(1)
61	396.52	110.32	Open To Flow (2)
91	564.90	111.52	Shut-In(2)
124	1117.78	112.74	End Shut-In(2)
125	2062.31	111.78	Final Hydro-static

## Recovery

Length (ft)	Description	Volume (bbl)
120.00	gas oil cut mud5%gas 25%oilk 70%mud	0.86
1150.00	clean gassy oil 10%gas 90%oil	16.13
0.00	1520 gas in pipe	0.00

## Gas Rates

Choke (inches)	Pressure (psia)	Gas Rate (Mcf/d)



# DRILL STEM TEST REPORT

Black Tea Oil L.L.C

**26-14-32 Logan**

1011 Centennial Blvd Ste B Hays KS 67601

**Krebs R #1**

Job Ticket: 19126

**DST#: 2**

ATTN: Kevin Bailey

Test Start: 2014.01.21 @ 17:07:00

## GENERAL INFORMATION:

Formation:

Deviated: No Whipstock: ft (KB)

Time Tool Opened: 18:56:30

Time Test Ended: 01:11:30

Test Type: Conventional Bottom Hole (Initial)

Tester: Jared Scheck

Unit No: 3335-50-Scott City

**Interval: 4100.00 ft (KB) To 4174.00 ft (KB) (TVD)**

Reference Elevations: 2680.00 ft (KB)

Total Depth: 4174.00 ft (KB) (TVD)

2671.00 ft (CF)

Hole Diameter: 7.88 inches Hole Condition: Fair

KB to GR/CF: 9.00 ft

**Serial #: 8400**

**Outside**

Press@RunDepth: 1119.31 psia @ 4171.00 ft (KB)

Capacity: 5000.00 psia

Start Date: 2014.01.21

End Date:

2014.01.22

Last Calib.:

2014.01.22

Start Time: 17:06:00

End Time:

01:11:00

Time On Btm:

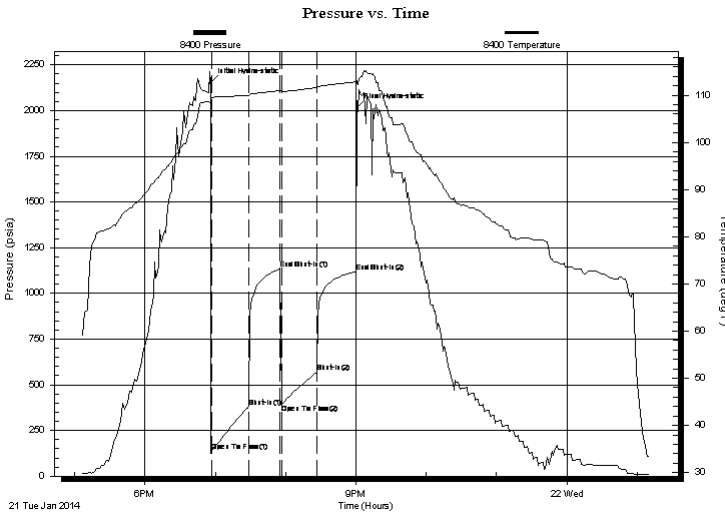
2014.01.21 @ 18:56:00

Time Off Btm:

2014.01.21 @ 21:01:00

**TEST COMMENT:** 1st Opening 30 Minutes-Strong blow built bottom of bucket in 2 3/4 minutes  
 1st Shut-in 30 Minutes-Bottom of bucket  
 2nd Opening 30 Minutes-Strong blow built bottom of bucket in 3 1/4 minutes  
 2nd Shut-in 30 Minutes-Bottom of bucket

## PRESSURE SUMMARY



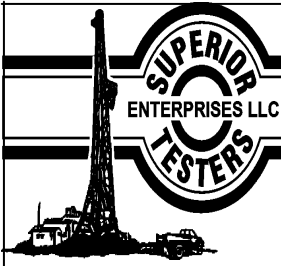
Time (Min.)	Pressure (psia)	Temp (deg F)	Annotation
0	2150.97	108.70	Initial Hydro-static
1	136.25	109.47	Open To Flow (1)
33	379.91	110.00	Shut-In(1)
60	1133.70	110.98	End Shut-In(1)
61	392.28	110.76	Open To Flow (2)
91	569.41	111.65	Shut-In(2)
124	1119.31	112.85	End Shut-In(2)
125	2014.02	112.52	Final Hydro-static

## Recovery

## Gas Rates

Length (ft)	Description	Volume (bbl)
120.00	gas oil cut mud5%gas 25%oilk 70%mud	0.86
1150.00	clean gassy oil 10%gas 90%oil	16.13
0.00	1520 gas in pipe	0.00

	Choke (inches)	Pressure (psia)	Gas Rate (Mcf/d)



# DRILL STEM TEST REPORT

**TOOL DIAGRAM**

Black Tea Oil L.L.C

**26-14-32 Logan**

1011 Centennial Blvd Ste B Hays KS 67601

**Krebs R #1**

Job Ticket: 19126

**DST#: 2**

ATTN: Kevin Bailey

Test Start: 2014.01.21 @ 17:07:00

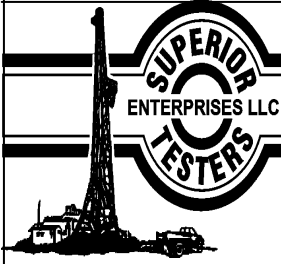
## Tool Information

Drill Pipe:	Length: 3991.00 ft	Diameter: 3.80 inches	Volume: 55.98 bbl	Tool Weight: 1000.00 lb
Heavy Wt. Pipe:	Length: 0.00 ft	Diameter: 0.00 inches	Volume: 0.00 bbl	Weight set on Packer: 20000.00 lb
Drill Collar:	Length: 90.00 ft	Diameter: 2.25 inches	Volume: 0.44 bbl	Weight to Pull Loose: 60000.00 lb
		Total Volume: 56.42 bbl		Tool Chased 0.00 ft
Drill Pipe Above KB:	9.00 ft			String Weight: Initial 38000.00 lb
Depth to Top Packer:	4100.00 ft			Final 41000.00 lb
Depth to Bottom Packer:	ft			
Interval between Packers:	74.00 ft			
Tool Length:	102.00 ft			
Number of Packers:	2	Diameter: 6.75 inches		

Tool Comments: ruined shale packer

Tool Description	Length (ft)	Serial No.	Position	Depth (ft)	Accum. Lengths
Shut-In Tool	5.00			4077.00	
Hydraulic Tool	5.00			4082.00	
Jars	6.00			4088.00	
Safety Joint	2.00			4090.00	
Packer	5.00			4095.00	28.00 Bottom Of Top Packer
Packer	5.00			4100.00	
Anchor	4.00			4104.00	
Change Over Sub	0.75			4104.75	
Drill Pipe	31.50			4136.25	
Change Over Sub	0.75			4137.00	
Anchor	32.00			4169.00	
Recorder	1.00	6731	Inside	4170.00	
Recorder	1.00	8400	Outside	4171.00	
Bullnose	3.00			4174.00	74.00 Bottom Packers & Anchor

**Total Tool Length: 102.00**



# DRILL STEM TEST REPORT

## FLUID SUMMARY

Black Tea Oil L.L.C

**26-14-32 Logan**

1011 Centennial Blvd Ste B Hays KS 67601

**Krebs R #1**

Job Ticket: 19126

**DST#: 2**

ATTN: Kevin Bailey

Test Start: 2014.01.21 @ 17:07:00

### Mud and Cushion Information

Mud Type: Gel Chem

Mud Weight: 9.00 lb/gal

Viscosity: 52.00 sec/qt

Water Loss: 6.40 in<sup>3</sup>

Resistivity: ohm.m

Salinity: 3000.00 ppm

Filter Cake: 1.00 inches

Cushion Type:

Cushion Length: ft

Cushion Volume: bbl

Gas Cushion Type:

Gas Cushion Pressure: psia

Oil API:

Water Salinity: deg API

ppm

### Recovery Information

Recovery Table

Length ft	Description	Volume bbl
120.00	gas oil cut mud5%gas 25%oilk 70%mud	0.863
1150.00	clean gassy oil 10%gas 90%oil	16.131
0.00	1520 gas in pipe	0.000

Total Length: 1270.00 ft      Total Volume: 16.994 bbl

Num Fluid Samples: 0

Num Gas Bombs: 0

Serial #:

Laboratory Name:

Laboratory Location:

Recovery Comments: ruined shale packer/gravity oil 48

Serial #: 6731

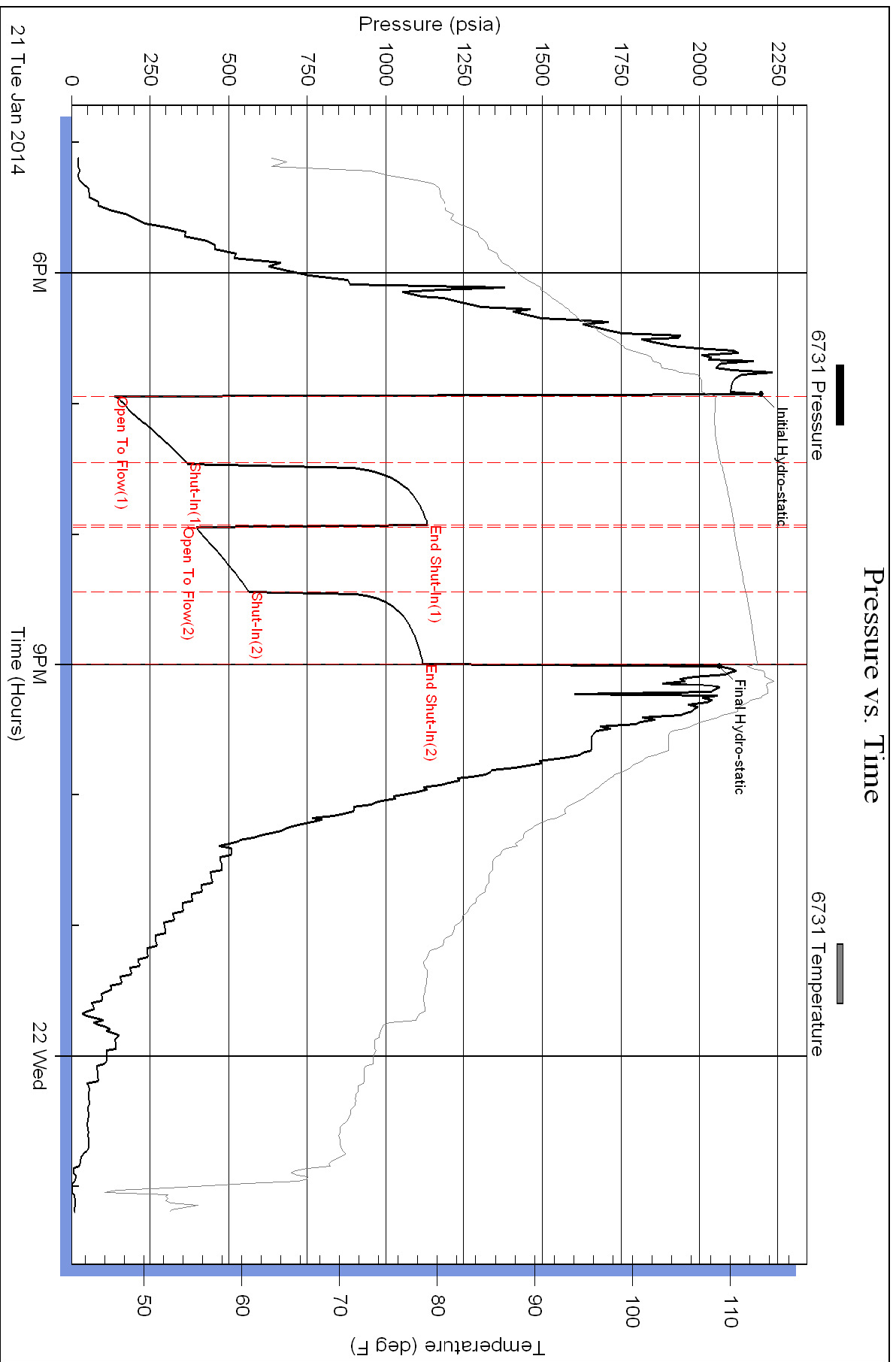
Inside

Black Tea Oil L.L.C

Krebs R#1

DST Test Number: 2

### Pressure vs. Time



Superior Testers Enterprises LLC

Ref. No: 19126

Printed: 2014.01.22 @ 01:33:39

### Pressure vs. Time

