



DRILL STEM TEST REPORT

Prepared For: **Black Tea Oil L.L.C**

10 11 Centennial Blvd Ste B Hays KS 67601

ATTN:

Kreb's V #1

33-14-32 Logan

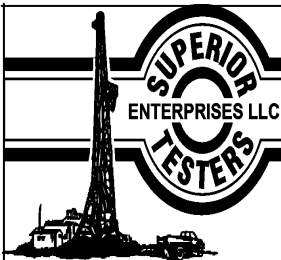
Start Date: 2014.03.30 @ 02:30:00

End Date: 2014.03.30 @ 10:37:00

Job Ticket #: 19215 DST #: 1

Superior Testers Enterprises LLC
PO Box 138 Great Bend KS 67530
1-800-792-6902

Printed: 2014.03.30 @ 11:56:15



DRILL STEM TEST REPORT

Black Tea Oil L.L.C

33-14-32 Logan

10 11 Centennial Blvd Ste B Hays KS 67601

Kreb's V #1

Job Ticket: 19215

DST#: 1

ATTN:

Test Start: 2014.03.30 @ 02:30:00

GENERAL INFORMATION:

Formation: **Lansing A**

Deviated: No Whipstock: ft (KB)

Time Tool Opened: 06:46:30

Time Test Ended: 10:37:00

Test Type: Conventional Bottom Hole (Initial)

Tester: Jared Scheck

Unit No: 3330-Scott City-

Interval: 3674.00 ft (KB) To 3794.00 ft (KB) (TVD)

Reference Elevations: 2682.00 ft (KB)

Total Depth: 3794.00 ft (KB) (TVD)

2672.00 ft (CF)

Hole Diameter: 7.88 inches Hole Condition: Fair

KB to GR/CF: 10.00 ft

Serial #: 8524

Press@RunDepth: 418.39 psig @ ft (KB)

Capacity: 5000.00 psig

Start Date: 2014.03.30

End Date: 2014.03.30

Last Calib.: 2014.03.30

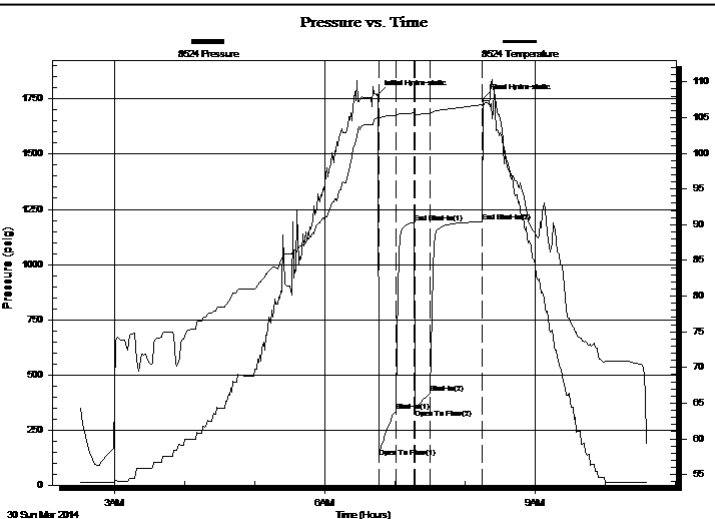
Start Time: 02:30:00

End Time: 10:37:00

Time On Btm: 2014.03.30 @ 06:45:30

Time Off Btm: 2014.03.30 @ 08:15:30

TEST COMMENT: 1st Opening 15 Minutes-Strong blow built bottom of bucket in 2 1/2 minutes
 1st Shut-in 15 Minutes-No blow back
 2nd Opening 15 Minutes-Strong blow built bottom of bucket in 3 minutes
 2nd Shut-in 15 Minutes-Very weak



PRESSURE SUMMARY

Time (Min.)	Pressure (psig)	Temp (deg F)	Annotation
0	1767.56	105.03	Initial Hydro-static
1	127.31	104.71	Open To Flow (1)
16	335.32	105.30	Shut-In(1)
31	1189.81	105.65	End Shut-In(1)
32	344.51	105.46	Open To Flow (2)
45	418.39	105.64	Shut-In(2)
89	1193.68	106.79	End Shut-In(2)
90	1749.89	106.45	Final Hydro-static

Recovery

Length (ft)	Description	Volume (bbl)
720.00	spot oil mud w ater 1%oil 49%w ater 50%	5.45
0.00	chlorides 23,000	0.00

Gas Rates

Choke (inches)	Pressure (psig)	Gas Rate (Mcf/d)



DRILL STEM TEST REPORT

Black Tea Oil L.L.C
 10 11 Centennial Blvd Ste B Hays KS 67601
 ATTN:

33-14-32 Logan
Kreb's V #1
 Job Ticket: 19215 **DST#: 1**
 Test Start: 2014.03.30 @ 02:30:00

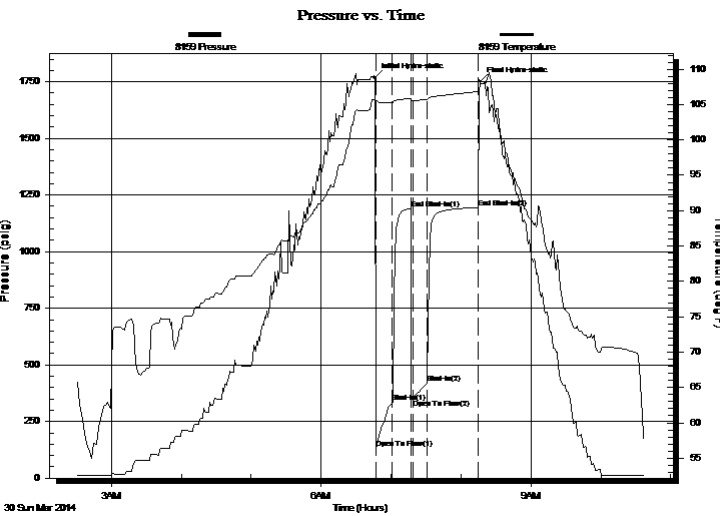
GENERAL INFORMATION:

Formation: **Lansing A**
 Deviated: No Whipstock: ft (KB)
 Time Tool Opened: 06:46:30
 Time Test Ended: 10:37:00
 Interval: **3674.00 ft (KB) To 3794.00 ft (KB) (TVD)**
 Total Depth: 3794.00 ft (KB) (TVD)
 Hole Diameter: 7.88 inches Hole Condition: Fair
 Test Type: Conventional Bottom Hole (Initial)
 Tester: Jared Scheck
 Unit No: 3330-Scott City-
 Reference Elevations: 2682.00 ft (KB)
 2672.00 ft (CF)
 KB to GR/CF: 10.00 ft

Serial #: 8159

Press@RunDepth: 1194.74 psig @ ft (KB) Capacity: 5000.00 psig
 Start Date: 2014.03.30 End Date: 2014.03.30 Last Calib.: 2014.03.30
 Start Time: 02:30:00 End Time: 10:38:00 Time On Btm: 2014.03.30 @ 06:46:00
 Time Off Btm: 2014.03.30 @ 08:16:00

TEST COMMENT: 1st Opening 15 Minutes-Strong blow built bottom of bucket in 2 1/2 minutes
 1st Shut-in 15 Minutes-No blow back
 2nd Opening 15 Minutes-Strong blow built bottom of bucket in 3 minutes
 2nd Shut-in 15 Minutes-Very weak



PRESSURE SUMMARY

Time (Min.)	Pressure (psig)	Temp (deg F)	Annotation
0	1768.37	105.75	Initial Hydro-static
1	130.62	105.54	Open To Flow (1)
15	333.61	105.33	Shut-In(1)
31	1190.75	105.85	End Shut-In(1)
33	349.41	105.60	Open To Flow (2)
45	419.87	105.76	Shut-In(2)
89	1194.74	106.86	End Shut-In(2)
90	1752.69	108.01	Final Hydro-static

Recovery

Length (ft)	Description	Volume (bbl)
720.00	spot oil mud w ater 1%oil 49%w ater 50%	5.45
0.00	chlorides 23,000	0.00

Gas Rates

Choke (inches)	Pressure (psig)	Gas Rate (Mcf/d)



DRILL STEM TEST REPORT

TOOL DIAGRAM

Black Tea Oil L.L.C
 10 11 Centennial Blvd Ste B Hays KS 67601
 ATTN:

33-14-32 Logan
Kreb's V #1
 Job Ticket: 19215 **DST#: 1**
 Test Start: 2014.03.30 @ 02:30:00

Tool Information

Drill Pipe:	Length: 3161.00 ft	Diameter: 3.80 inches	Volume: 44.34 bbl	Tool Weight: 1000.00 lb
Heavy Wt. Pipe:	Length: 0.00 ft	Diameter: 0.00 inches	Volume: 0.00 bbl	Weight set on Packer: 20000.00 lb
Drill Collar:	Length: 510.00 ft	Diameter: 2.25 inches	Volume: 2.51 bbl	Weight to Pull Loose: 90000.00 lb
			<u>Total Volume: 46.85 bbl</u>	Tool Chased 0.00 ft
Drill Pipe Above KB:	20.00 ft			String Weight: Initial 80000.00 lb
Depth to Top Packer:	3674.00 ft			Final 80000.00 lb
Depth to Bottom Packer:	ft			
Interval between Packers:	120.00 ft			
Tool Length:	143.00 ft			
Number of Packers:	2	Diameter: 6.75 inches		

Tool Comments:

Tool Description	Length (ft)	Serial No.	Position	Depth (ft)	Accum. Lengths
Shut In Tool	5.00			3656.00	
Hydraulic tool	5.00			3661.00	
Jars	6.00			3667.00	
Safety Joint	2.00			3669.00	
Packer	5.00			3674.00	23.00 Bottom Of Top Packer
Packer - Shale	5.00			3679.00	
Anchor	16.00			3695.00	
Change Over Sub	0.50			3695.50	
Drill Pipe	93.00			3788.50	
Change Over Sub	0.50			3789.00	
Recorder	1.00			3790.00	
Recorder	1.00			3791.00	
Bullnose	3.00			3794.00	120.00 Anchor Tool

Total Tool Length: 143.00



DRILL STEM TEST REPORT

FLUID SUMMARY

Black Tea Oil L.L.C
 10 11 Centennial Blvd Ste B Hays KS 67601
 ATTN:

33-14-32 Logan
Kreb's V #1
 Job Ticket: 19215 **DST#: 1**
 Test Start: 2014.03.30 @ 02:30:00

Mud and Cushion Information

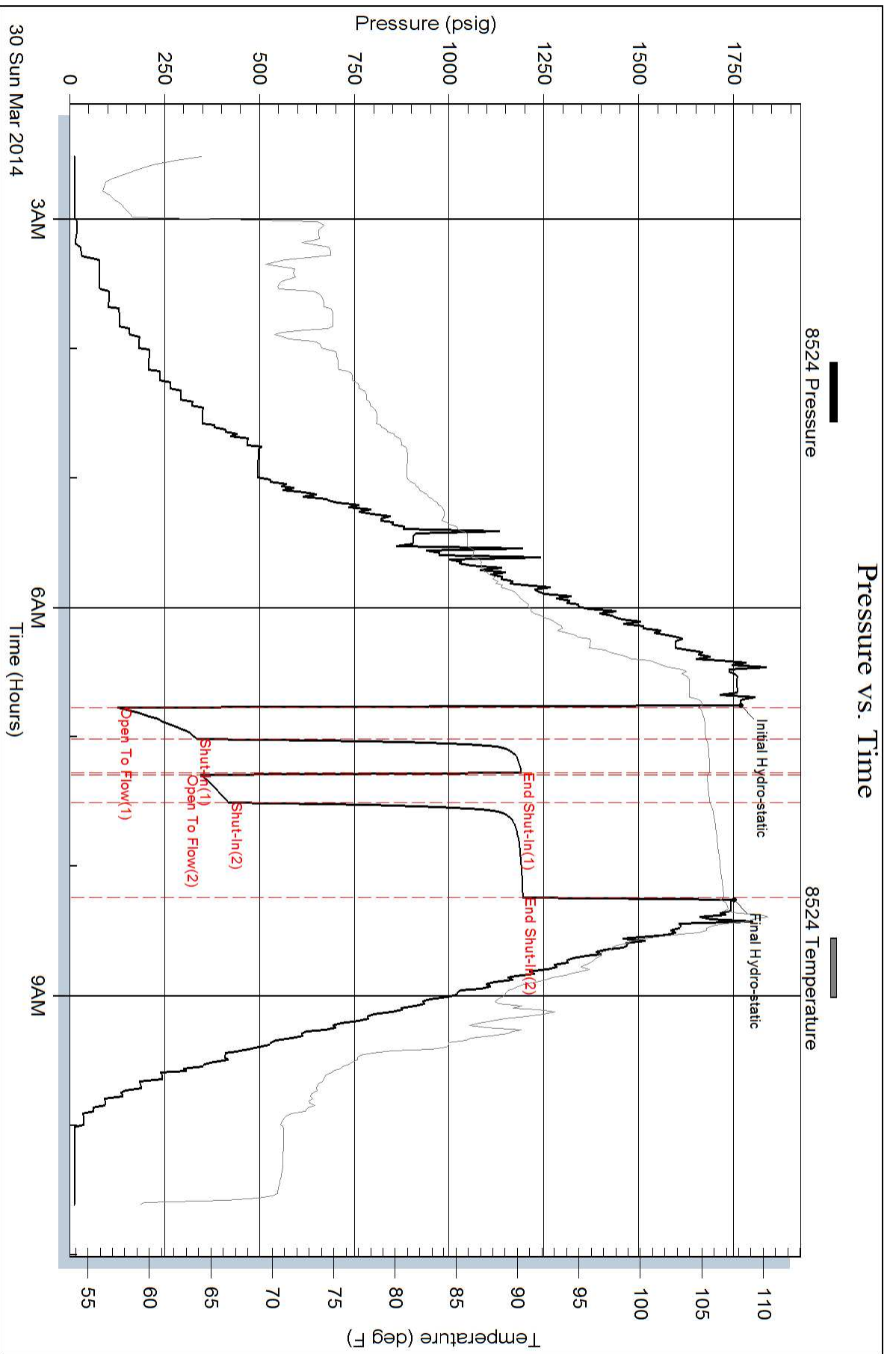
Mud Type: Gel Chem	Cushion Type:	Oil API:	deg API
Mud Weight: 9.00 lb/gal	Cushion Length: ft	Water Salinity:	ppm
Viscosity: 49.00 sec/qt	Cushion Volume: bbl		
Water Loss: in ³	Gas Cushion Type:		
Resistivity: ohm.m	Gas Cushion Pressure: psig		
Salinity: ppm			
Filter Cake: 1.00 inches			

Recovery Information

Recovery Table

Length ft	Description	Volume bbl
720.00	spot oil mud w ater 1%oil 49%w ater 50%mud	5.454
0.00	chlorides 23,000	0.000

Total Length: 720.00 ft Total Volume: 5.454 bbl
 Num Fluid Samples: 0 Num Gas Bombs: 0 Serial #:
 Laboratory Name: Laboratory Location:
 Recovery Comments: chlorides 23,000



Pressure vs. Time

