



DRILL STEM TEST REPORT

Prepared For: **Black Tea Oil L.L.C**

10 11 Centennial Blvd Ste B Hays KS 67601

ATTN:

Kreb's V #1

33-14-32 Logan

Start Date: 2014.03.31 @ 09:30:00

End Date: 2014.03.31 @ 18:12:00

Job Ticket #: 19216 DST #: 2

Superior Testers Enterprises LLC
PO Box 138 Great Bend KS 67530
1-800-792-6902

Printed: 2014.03.31 @ 19:03:38



DRILL STEM TEST REPORT

Black Tea Oil L.L.C
 10 11 Centennial Blvd Ste B Hays KS 67601
 ATTN:

33-14-32 Logan
Kreb's V #1
 Job Ticket: 19216 **DST#: 2**
 Test Start: 2014.03.31 @ 09:30:00

GENERAL INFORMATION:

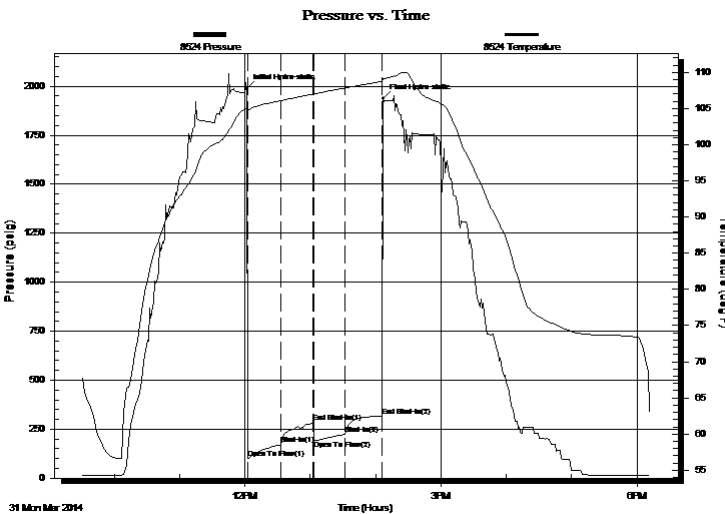
Formation: **Mormington A**
 Deviated: No Whipstock: ft (KB)
 Time Tool Opened: 12:02:30
 Time Test Ended: 18:12:00
Interval: 3988.00 ft (KB) To 4065.00 ft (KB) (TVD)
 Total Depth: 4185.00 ft (KB) (TVD)
 Hole Diameter: 7.88 inches Hole Condition: Poor
 Test Type: Conventional Straddle (Initial)
 Tester: Jared Scheck
 Unit No: 3330-Scott City-
 Reference Elevations: 2682.00 ft (KB)
 2672.00 ft (CF)
 KB to GR/CF: 10.00 ft

Serial #: 8524

Press@RunDepth: 223.30 psig @ ft (KB) Capacity: 5000.00 psig
 Start Date: 2014.03.31 End Date: 2014.03.31 Last Calib.: 2014.03.31
 Start Time: 09:30:00 End Time: 18:12:00 Time On Btm: 2014.03.31 @ 12:01:30
 Time Off Btm: 2014.03.31 @ 14:07:00

TEST COMMENT: 1st Opening 30 Minutes-Strong blow built bottom of bucket in 3 Minutes
 1st Shut-in 30 Minutes-Yes blow back
 2nd Opening 30 Minutes-Strong blow built bottom of bucket in 5 minutes
 2nd Shut-in 30 Minutes-Yes blow back

PRESSURE SUMMARY



Time (Min.)	Pressure (psig)	Temp (deg F)	Annotation
0	1987.63	105.06	Initial Hydro-static
1	101.65	104.70	Open To Flow (1)
31	170.67	106.07	Shut-In(1)
61	284.40	107.00	End Shut-In(1)
62	191.01	107.01	Open To Flow (2)
91	223.30	107.84	Shut-In(2)
125	318.04	108.74	End Shut-In(2)
126	1937.14	109.16	Final Hydro-static

Recovery

Length (ft)	Description	Volume (bbl)
430.00	gas oil 15%gas 85%oil	5.21
0.00	800 gas in pipe	0.00
0.00	gravity oil 48	0.00

Gas Rates

	Choke (inches)	Pressure (psig)	Gas Rate (Mcf/d)



DRILL STEM TEST REPORT

Black Tea Oil L.L.C
 10 11 Centennial Blvd Ste B Hays KS 67601
 ATTN:

33-14-32 Logan
Kreb's V #1
 Job Ticket: 19216 **DST#: 2**
 Test Start: 2014.03.31 @ 09:30:00

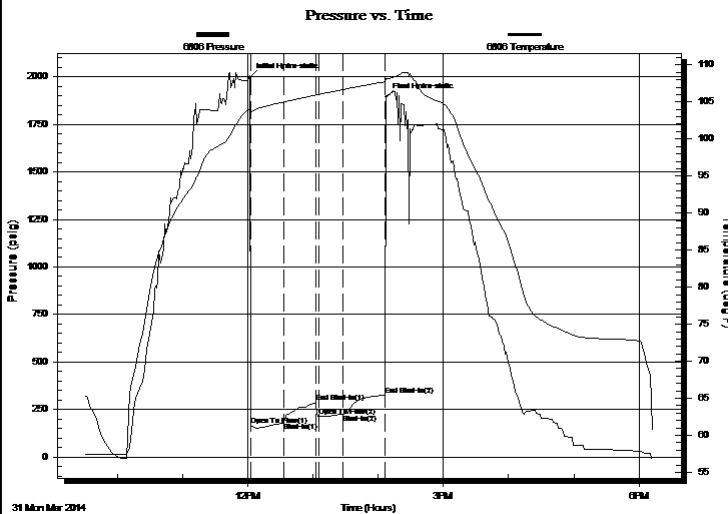
GENERAL INFORMATION:

Formation: **Mormington A**
 Deviated: No Whipstock: ft (KB)
 Time Tool Opened: 12:02:30
 Time Test Ended: 18:12:00
 Interval: **3988.00 ft (KB) To 4065.00 ft (KB) (TVD)**
 Total Depth: 4185.00 ft (KB) (TVD)
 Hole Diameter: 7.88 inches Hole Condition: Poor
 Test Type: Conventional Straddle (Initial)
 Tester: Jared Scheck
 Unit No: 3330-Scott City-
 Reference Elevations: 2682.00 ft (KB)
 2672.00 ft (CF)
 KB to GR/CF: 10.00 ft

Serial #: 6806

Press@RunDepth: 324.94 psig @ ft (KB) Capacity: 5000.00 psig
 Start Date: 2014.03.31 End Date: 2014.03.31 Last Calib.: 2014.03.31
 Start Time: 09:30:00 End Time: 18:12:30 Time On Btm: 2014.03.31 @ 12:02:00
 Time Off Btm: 2014.03.31 @ 14:07:30

TEST COMMENT: 1st Opening 30 Minutes-Strong blow built bottom of bucket in 3 Minutes
 1st Shut-in 30 Minutes-Yes blow back
 2nd Opening 30 Minutes-Strong blow built bottom of bucket in 5 minutes
 2nd Shut-in 30 Minutes-Yes blow back



PRESSURE SUMMARY

Time (Min.)	Pressure (psig)	Temp (deg F)	Annotation
0	1998.74	104.06	Initial Hydro-static
1	165.88	103.68	Open To Flow (1)
32	185.89	105.00	Shut-In(1)
61	286.93	105.94	End Shut-In(1)
63	216.48	105.99	Open To Flow (2)
86	227.02	106.68	Shut-In(2)
125	324.94	107.73	End Shut-In(2)
126	1891.84	108.15	Final Hydro-static

Recovery

Length (ft)	Description	Volume (bbl)
430.00	gas oil 15%gas 85%oil	5.21
0.00	800 gas in pipe	0.00
0.00	gravity oil 48	0.00

Gas Rates

	Choke (inches)	Pressure (psig)	Gas Rate (Mcf/d)



DRILL STEM TEST REPORT

TOOL DIAGRAM

Black Tea Oil L.L.C

33-14-32 Logan

10 11 Centennial Blvd Ste B Hays KS 67601

Kreb's V #1

Job Ticket: 19216

DST#: 2

ATTN:

Test Start: 2014.03.31 @ 09:30:00

Tool Information

Drill Pipe:	Length: 4108.00 ft	Diameter: 3.80 inches	Volume: 57.62 bbl	Tool Weight:	1000.00 lb
Heavy Wt. Pipe:	Length: 0.00 ft	Diameter: 0.00 inches	Volume: 0.00 bbl	Weight set on Packer:	20000.00 lb
Drill Collar:	Length: 90.00 ft	Diameter: 2.25 inches	Volume: 0.44 bbl	Weight to Pull Loose:	80000.00 lb
			<u>Total Volume: 58.06 bbl</u>	Tool Chased	0.00 ft
Drill Pipe Above KB:	ft			String Weight: Initial	49000.00 lb
Depth to Top Packer:	ft			Final	60000.00 lb
Depth to Bottom Packer:	ft				
Interval between Packers:	0.00 ft				
Tool Length:	214.50 ft				
Number of Packers:	3	Diameter: 6.75 inches			
Tool Comments:					

Tool Description	Length (ft)	Serial No.	Position	Depth (ft)	Accum. Lengths
------------------	-------------	------------	----------	------------	----------------

Shut-In Tool	5.00			4203.00	
Hydraulic tool	5.00			4208.00	
Jars	6.00			4214.00	
Safety Joint	2.00			4216.00	
Top Packer	5.00			4221.00	
Packer - Shale	5.00			4226.00	
Anchor	77.00			4303.00	
Recorder	1.00		Inside	4304.00	
Blank Off Sub	0.50			4304.50	
Packer - Shale	5.00			4309.50	
tail pipe	99.00			4408.50	
Recorder	1.00		Outside	4409.50	
Bullnose	3.00			4412.50	214.50

Anchor Tool

Total Tool Length: 214.50



DRILL STEM TEST REPORT

FLUID SUMMARY

Black Tea Oil L.L.C

33-14-32 Logan

10 11 Centennial Blvd Ste B Hays KS 67601

Kreb's V #1

Job Ticket: 19216

DST#: 2

ATTN:

Test Start: 2014.03.31 @ 09:30:00

Mud and Cushion Information

Mud Type: Gel Chem

Mud Weight: 9.00 lb/gal

Viscosity: 48.00 sec/qt

Water Loss: 7.20 in³

Resistivity: ohm.m

Salinity: 5000.00 ppm

Filter Cake: 1.00 inches

Cushion Type:

Cushion Length: ft

Cushion Volume: bbl

Gas Cushion Type:

Gas Cushion Pressure: psig

Oil API:

Water Salinity: deg API

ppm

Recovery Information

Recovery Table

Length ft	Description	Volume bbl
430.00	gas oil 15%gas 85%oil	5.212
0.00	800 gas in pipe	0.000
0.00	gravity oil 48	0.000

Total Length: 430.00 ft Total Volume: 5.212 bbl

Num Fluid Samples: 0

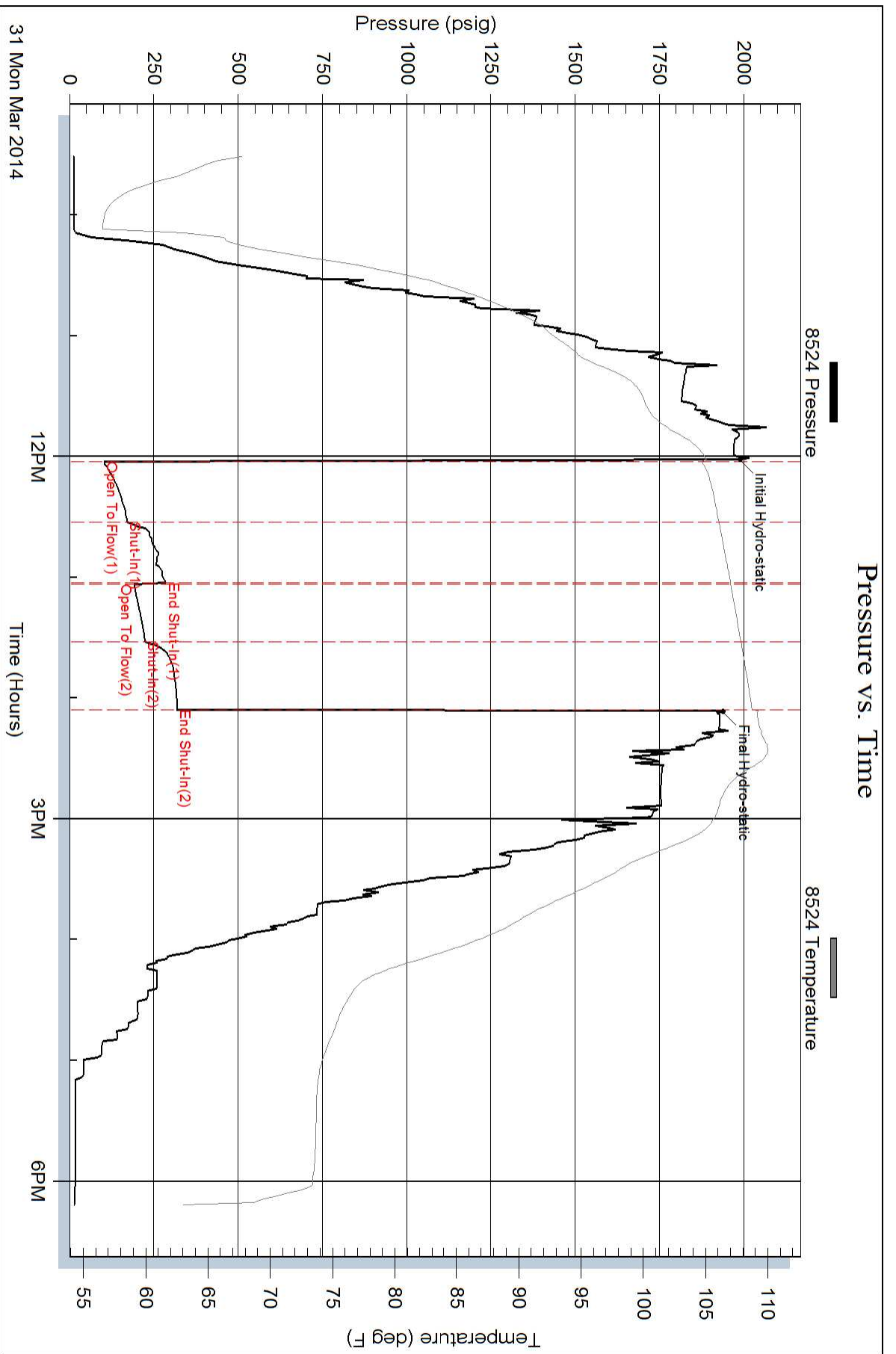
Num Gas Bombs: 0

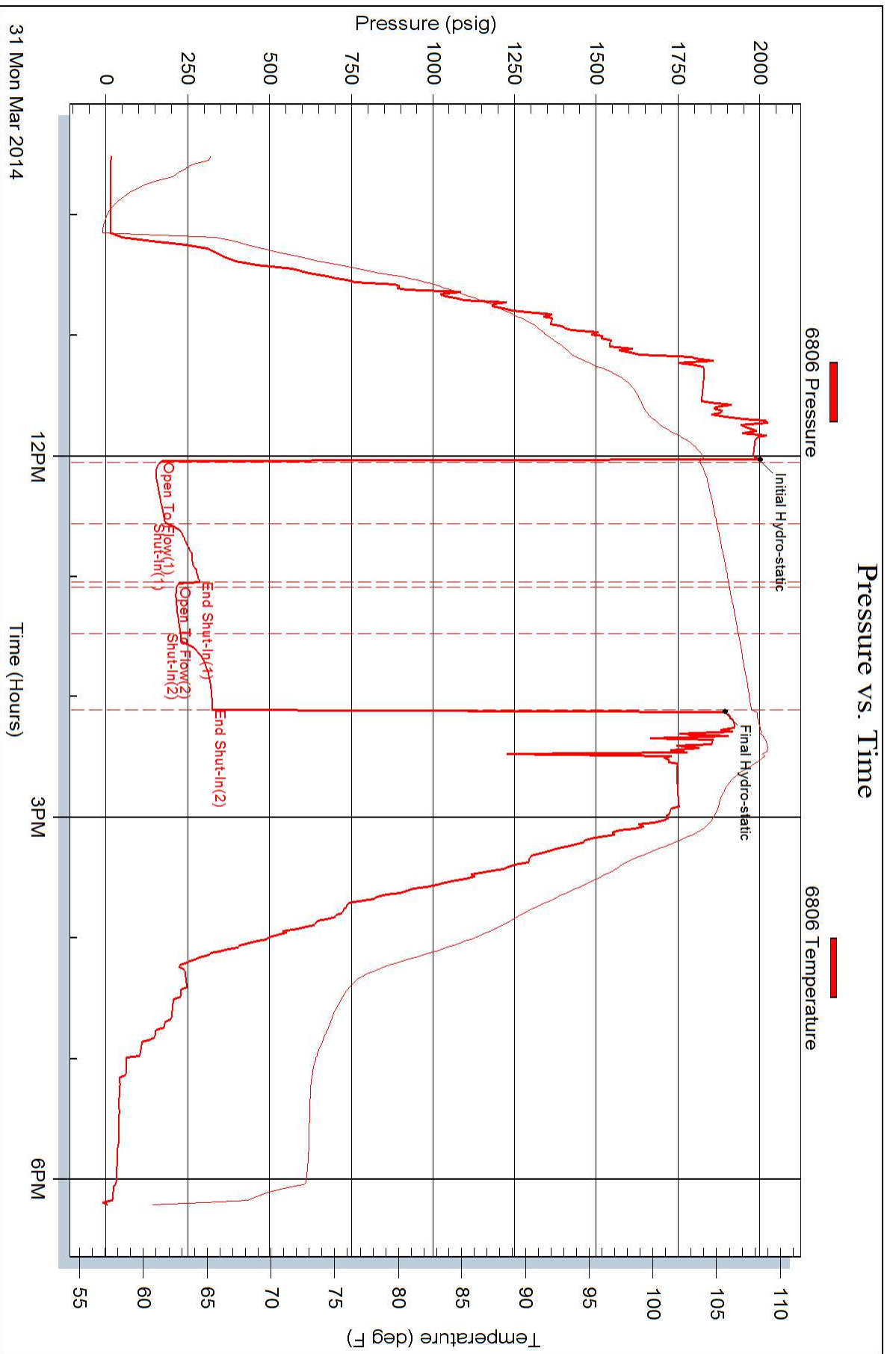
Serial #:

Laboratory Name:

Laboratory Location:

Recovery Comments:





31 Mon Mar 2014