



DRILL STEM TEST REPORT

Prepared For: **Landmark Resources Inc.**

1616 S. Voss Rd. STE 600
Houston TX 77057

ATTN: Terry McLeod

1-17s-34w Scott KS

Janzen-Beeson Unit #1-1

Start Date: 2014.04.03 @ 04:50:00

End Date: 2014.04.03 @ 13:26:49

Job Ticket #: 56872 DST #: 1

Trilobite Testing, Inc

PO Box 362 Hays, KS 67601

ph: 785-625-4778 fax: 785-625-5620

Printed: 2014.04.08 @ 10:29:37



**TRILOBITE
TESTING, INC**

DRILL STEM TEST REPORT

Landmark Resources Inc.

Janzen-Beeson Unit #1-1

1616 S. Voss Rd. STE 600
Houston TX 77057

1-17s-34w Scott KS

Job Ticket: 56872

DST#: 1

ATTN: Terry McLeod

Test Start: 2014.04.03 @ 04:50:00

GENERAL INFORMATION:

Formation: **Marmaton**

Deviated: No Whipstock: ft (KB)

Time Tool Opened: 07:26:30

Time Test Ended: 13:26:49

Test Type: Conventional Bottom Hole (Initial)

Tester: Ryan Nichols

Unit No: 58

Interval: 4413.00 ft (KB) To 4460.00 ft (KB) (TVD)

Reference Elevations: 3109.00 ft (KB)

Total Depth: 4460.00 ft (KB) (TVD)

3098.00 ft (CF)

Hole Diameter: 7.88 inches Hole Condition: Good

KB to GR/CF: 11.00 ft

Serial #: 6752 Inside

Press@RunDepth: 191.24 psig @ 4414.00 ft (KB)

Capacity: 8000.00 psig

Start Date: 2014.04.03

End Date:

2014.04.03

Last Calib.:

2014.04.03

Start Time: 04:50:01

End Time:

13:26:49

Time On Btm:

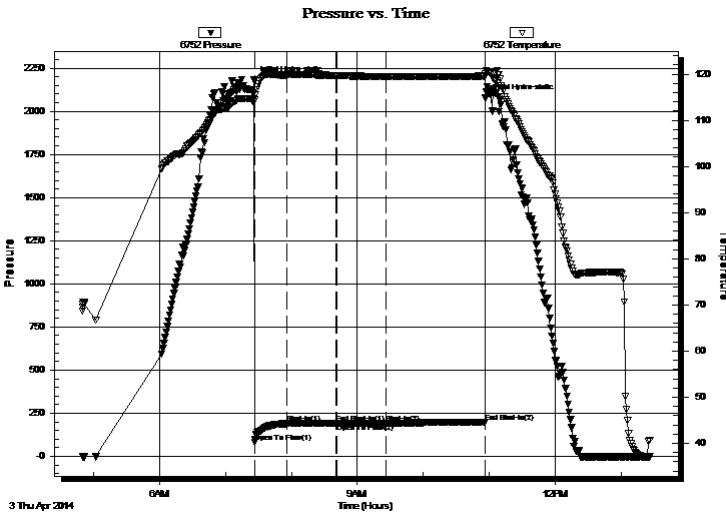
2014.04.03 @ 07:26:10

Time Off Btm:

2014.04.03 @ 10:56:39

TEST COMMENT: 30 IF - 2" blow built to BoB @ 3 mins
60 ISI - Surface blow started @ 2 mins built to 1 3/4"
30 FF - Surface blow started @ 17 mins built to 1"
60 FSI - No return

PRESSURE SUMMARY



Time (Min.)	Pressure (psig)	Temp (deg F)	Annotation
0	2179.70	114.66	Initial Hydro-static
1	82.18	114.42	Open To Flow (1)
30	189.35	119.84	Shut-In(1)
75	192.85	119.70	End Shut-In(1)
76	191.05	119.70	Open To Flow (2)
120	191.24	119.48	Shut-In(2)
211	199.04	119.57	End Shut-In(2)
211	2076.47	120.15	Final Hydro-static

Recovery

Length (ft)	Description	Volume (bbl)
479.00	GMCO - 30%G - 15%M - 55%o	4.20
0.00	393' GIP	0.00

Gas Rates

	Choke (inches)	Pressure (psig)	Gas Rate (Mcf/d)



**TRILOBITE
TESTING, INC**

DRILL STEM TEST REPORT

TOOL DIAGRAM

Landmark Resources Inc.

Janzen-Beeson Unit #1-1

1616 S. Voss Rd. STE 600
Houston TX 77057

1-17s-34w Scott KS

Job Ticket: 56872

DST#: 1

ATTN: Terry McLeod

Test Start: 2014.04.03 @ 04:50:00

Tool Information

Drill Pipe:	Length: 4143.00 ft	Diameter: 3.80 inches	Volume: 58.12 bbl	Tool Weight: 2000.00 lb
Heavy Wt. Pipe:	Length: 0.00 ft	Diameter: 0.00 inches	Volume: 0.00 bbl	Weight set on Packer: 25000.00 lb
Drill Collar:	Length: 277.00 ft	Diameter: 2.25 inches	Volume: 1.36 bbl	Weight to Pull Loose: 74000.00 lb
			<u>Total Volume: 59.48 bbl</u>	Tool Chased 0.00 ft
Drill Pipe Above KB:	34.00 ft			String Weight: Initial 68000.00 lb
Depth to Top Packer:	4413.00 ft			Final 70000.00 lb
Depth to Bottom Packer:	ft			
Interval between Packers:	47.00 ft			
Tool Length:	74.00 ft			
Number of Packers:	2	Diameter: 6.75 inches		

Tool Comments:

Tool Description	Length (ft)	Serial No.	Position	Depth (ft)	Accum. Lengths
------------------	-------------	------------	----------	------------	----------------

Change Over Sub	1.00			4387.00	
Shut In Tool	5.00			4392.00	
Hydraulic tool	5.00			4397.00	
Jars	5.00			4402.00	
Safety Joint	2.00			4404.00	
Packer	5.00			4409.00	27.00 Bottom Of Top Packer
Packer	4.00			4413.00	
Stubb	1.00			4414.00	
Recorder	0.00	6752	Inside	4414.00	
Recorder	0.00	8322	Outside	4414.00	
Perforations	10.00			4424.00	
Change Over Sub	1.00			4425.00	
Drill Pipe	31.00			4456.00	
Change Over Sub	1.00			4457.00	
Bullnose	3.00			4460.00	47.00 Bottom Packers & Anchor

Total Tool Length: 74.00



**TRILOBITE
TESTING, INC**

DRILL STEM TEST REPORT

FLUID SUMMARY

Landmark Resources Inc.

Janzen-Beeson Unit #1-1

1616 S. Voss Rd. STE 600
Houston TX 77057

1-17s-34w Scott KS

Job Ticket: 56872

DST#: 1

ATTN: Terry McLeod

Test Start: 2014.04.03 @ 04:50:00

Mud and Cushion Information

Mud Type: Gel Chem

Cushion Type:

Oil API:

deg API

Mud Weight: 9.00 lb/gal

Cushion Length:

ft

Water Salinity:

ppm

Viscosity: 57.00 sec/qt

Cushion Volume:

bbbl

Water Loss: 7.18 in³

Gas Cushion Type:

Resistivity: ohm.m

Gas Cushion Pressure:

psig

Salinity: 3500.00 ppm

Filter Cake: 1.00 inches

Recovery Information

Recovery Table

Length ft	Description	Volume bbl
479.00	GMCO - 30%G - 15%M - 55%o	4.196
0.00	393' GIP	0.000

Total Length: 479.00 ft Total Volume: 4.196 bbl

Num Fluid Samples: 0

Num Gas Bombs: 0

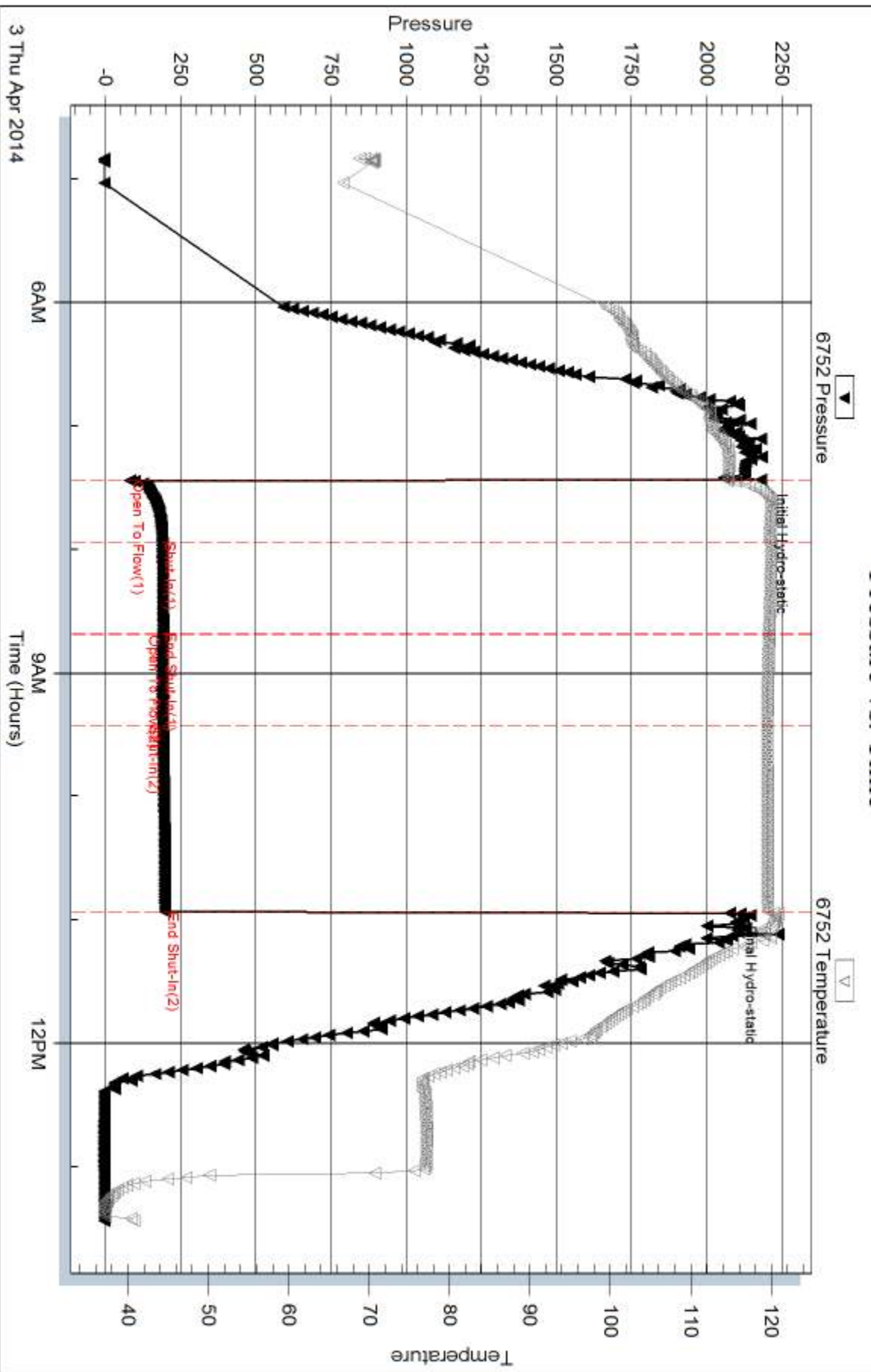
Serial #:

Laboratory Name:

Laboratory Location:

Recovery Comments:

Pressure vs. Time

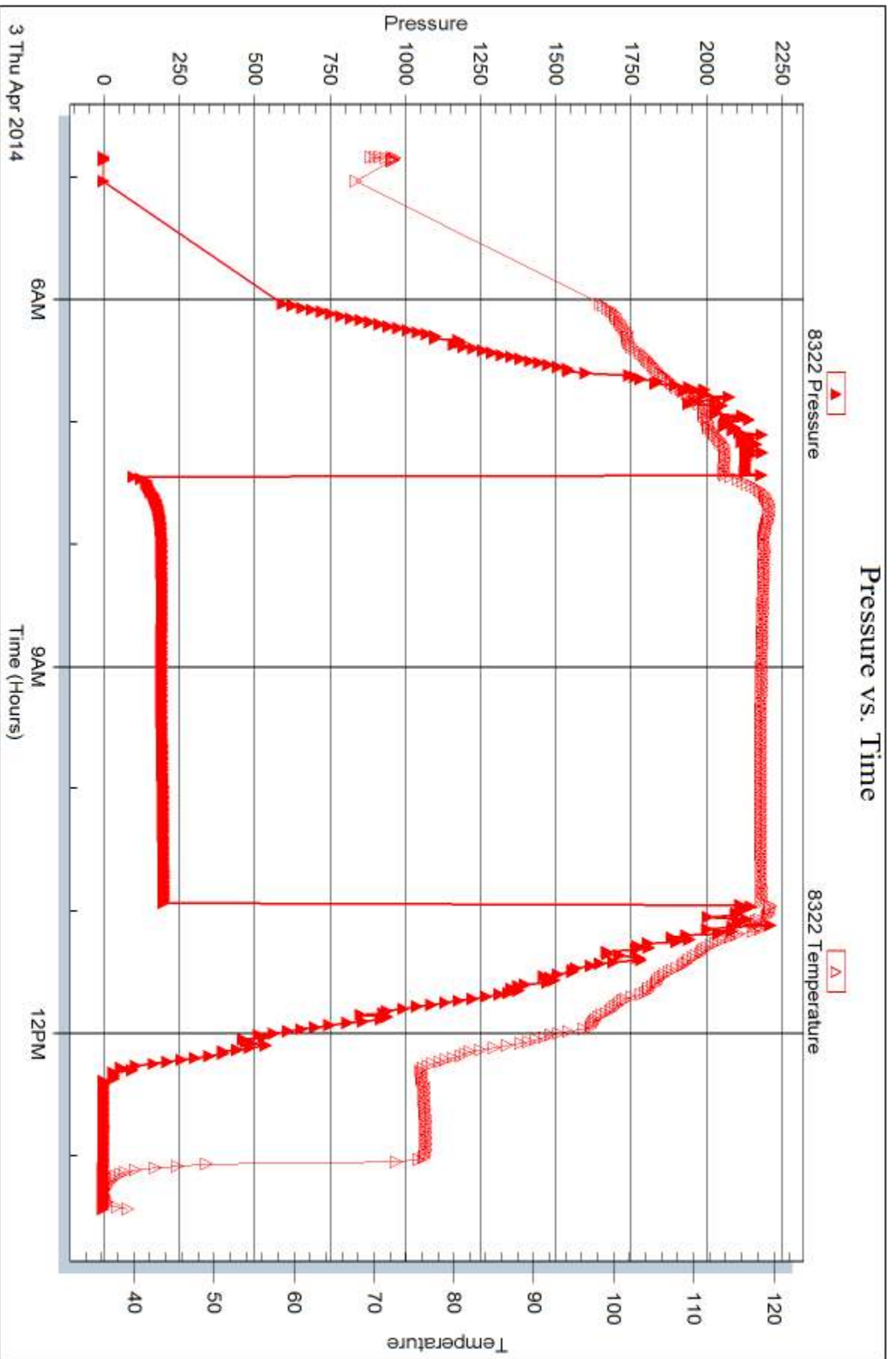


Serial #: 8322

Outside Landmark Resources Inc.

1-17/s-34w Scott KS

DST Test Number: 1



Tribble Testing, Inc

Ref. No: 56872

Printed: 2014.04.08 @ 10:29:39



DRILL STEM TEST REPORT

Prepared For: **Landmark Resources Inc.**

1616 S. Voss Rd. STE 600
Houston TX 77057

ATTN: Terry McLeod

1-17s-34w Scott KS

Janzen-Beeson Unit #1-1

Start Date: 2014.04.04 @ 00:03:00

End Date: 2014.04.04 @ 06:22:42

Job Ticket #: 56260 DST #: 2

Trilobite Testing, Inc

PO Box 362 Hays, KS 67601

ph: 785-625-4778 fax: 785-625-5620

Printed: 2014.04.08 @ 10:29:11



TRILOBITE TESTING, INC

DRILL STEM TEST REPORT

Landmark Resources Inc.

Janzen-Beeson Unit #1-1

1616 S. Voss Rd. STE 600
Houston TX 77057

1-17s-34w Scott KS

Job Ticket: 56260

DST#: 2

ATTN: Terry McLeod

Test Start: 2014.04.04 @ 00:03:00

GENERAL INFORMATION:

Formation: **Altamont**

Deviated: No Whipstock: ft (KB)

Time Tool Opened: 02:28:36

Time Test Ended: 06:22:42

Test Type: Conventional Bottom Hole (Reset)

Tester: Chuck Smith

Unit No: 62

Interval: 4465.00 ft (KB) To 4525.00 ft (KB) (TVD)

Reference Elevations: 3109.00 ft (KB)

Total Depth: 4525.00 ft (KB) (TVD)

3098.00 ft (CF)

Hole Diameter: 7.88 inches Hole Condition: Good

KB to GR/CF: 11.00 ft

Serial #: 8357

Inside

Press@RunDepth: 18.77 psig @ 4467.00 ft (KB)

Capacity: 8000.00 psig

Start Date: 2014.04.04

End Date:

2014.04.04

Last Calib.: 2014.04.04

Start Time: 00:03:05

End Time:

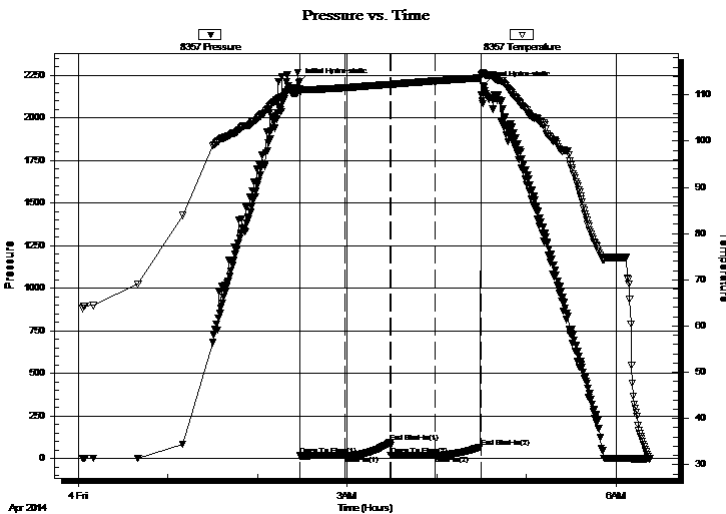
06:22:42

Time On Btm: 2014.04.04 @ 02:27:30

Time Off Btm: 2014.04.04 @ 04:31:06

TEST COMMENT: 30- Weak surface blow .
30- No return.
30- No blow .
30- No return.

PRESSURE SUMMARY



Time (Min.)	Pressure (psig)	Temp (deg F)	Annotation
0	2208.41	111.37	Initial Hydro-static
2	17.09	110.63	Open To Flow (1)
31	17.96	111.55	Shut-In(1)
62	97.15	112.29	End Shut-In(1)
62	17.64	112.27	Open To Flow (2)
92	18.77	113.02	Shut-In(2)
122	69.06	113.67	End Shut-In(2)
124	2188.79	114.87	Final Hydro-static

Recovery

Length (ft)	Description	Volume (bbl)
2.00	M 100m	0.01

* Recovery from multiple tests

Gas Rates

Choke (inches)	Pressure (psig)	Gas Rate (Mcf/d)



**TRILOBITE
TESTING, INC**

DRILL STEM TEST REPORT

TOOL DIAGRAM

Landmark Resources Inc.

Janzen-Beeson Unit #1-1

1616 S. Voss Rd. STE 600
Houston TX 77057

1-17s-34w Scott KS

Job Ticket: 56260

DST#: 2

ATTN: Terry McLeod

Test Start: 2014.04.04 @ 00:03:00

Tool Information

Drill Pipe:	Length: 4173.00 ft	Diameter: 3.80 inches	Volume: 58.54 bbl	Tool Weight:	2300.00 lb
Heavy Wt. Pipe:	Length: 0.00 ft	Diameter: 0.00 inches	Volume: 0.00 bbl	Weight set on Packer:	22000.00 lb
Drill Collar:	Length: 277.00 ft	Diameter: 2.25 inches	Volume: 1.36 bbl	Weight to Pull Loose:	75000.00 lb
			<u>Total Volume: 59.90 bbl</u>	Tool Chased	0.00 ft
Drill Pipe Above KB:	7.50 ft			String Weight: Initial	68000.00 lb
Depth to Top Packer:	4465.00 ft			Final	68000.00 lb
Depth to Bottom Packer:	ft				
Interval between Packers:	60.00 ft				
Tool Length:	82.50 ft				
Number of Packers:	2	Diameter: 6.75 inches			

Tool Comments:

Tool Description

Tool Description	Length (ft)	Serial No.	Position	Depth (ft)	Accum. Lengths
Change Over Sub	1.00			4443.50	
Shut In Tool	5.00			4448.50	
Hydraulic tool	5.00			4453.50	
Safety Joint	2.50			4456.00	
Packer	5.00			4461.00	22.50 Bottom Of Top Packer
Packer	4.00			4465.00	
Stubb	1.00			4466.00	
Perforations	1.00			4467.00	
Recorder	0.00	8357	Inside	4467.00	
Recorder	0.00	8645	Outside	4467.00	
Perforations	22.00			4489.00	
Change Over Sub	1.00			4490.00	
Drill Pipe	31.00			4521.00	
Change Over Sub	1.00			4522.00	
Bullnose	3.00			4525.00	60.00 Bottom Packers & Anchor

Total Tool Length: 82.50



**TRILOBITE
TESTING, INC**

DRILL STEM TEST REPORT

FLUID SUMMARY

Landmark Resources Inc.

Janzen-Beeson Unit #1-1

1616 S. Voss Rd. STE 600
Houston TX 77057

1-17s-34w Scott KS

Job Ticket: 56260

DST#: 2

ATTN: Terry McLeod

Test Start: 2014.04.04 @ 00:03:00

Mud and Cushion Information

Mud Type: Gel Chem

Cushion Type:

Oil API:

deg API

Mud Weight: 9.00 lb/gal

Cushion Length:

ft

Water Salinity:

ppm

Viscosity: 55.00 sec/qt

Cushion Volume:

bbbl

Water Loss: 7.17 in³

Gas Cushion Type:

Resistivity: ohm.m

Gas Cushion Pressure:

psig

Salinity: 3500.00 ppm

Filter Cake: 1.00 inches

Recovery Information

Recovery Table

Length ft	Description	Volume bbl
2.00	M 100m	0.010

Total Length: 2.00 ft Total Volume: 0.010 bbl

Num Fluid Samples: 0

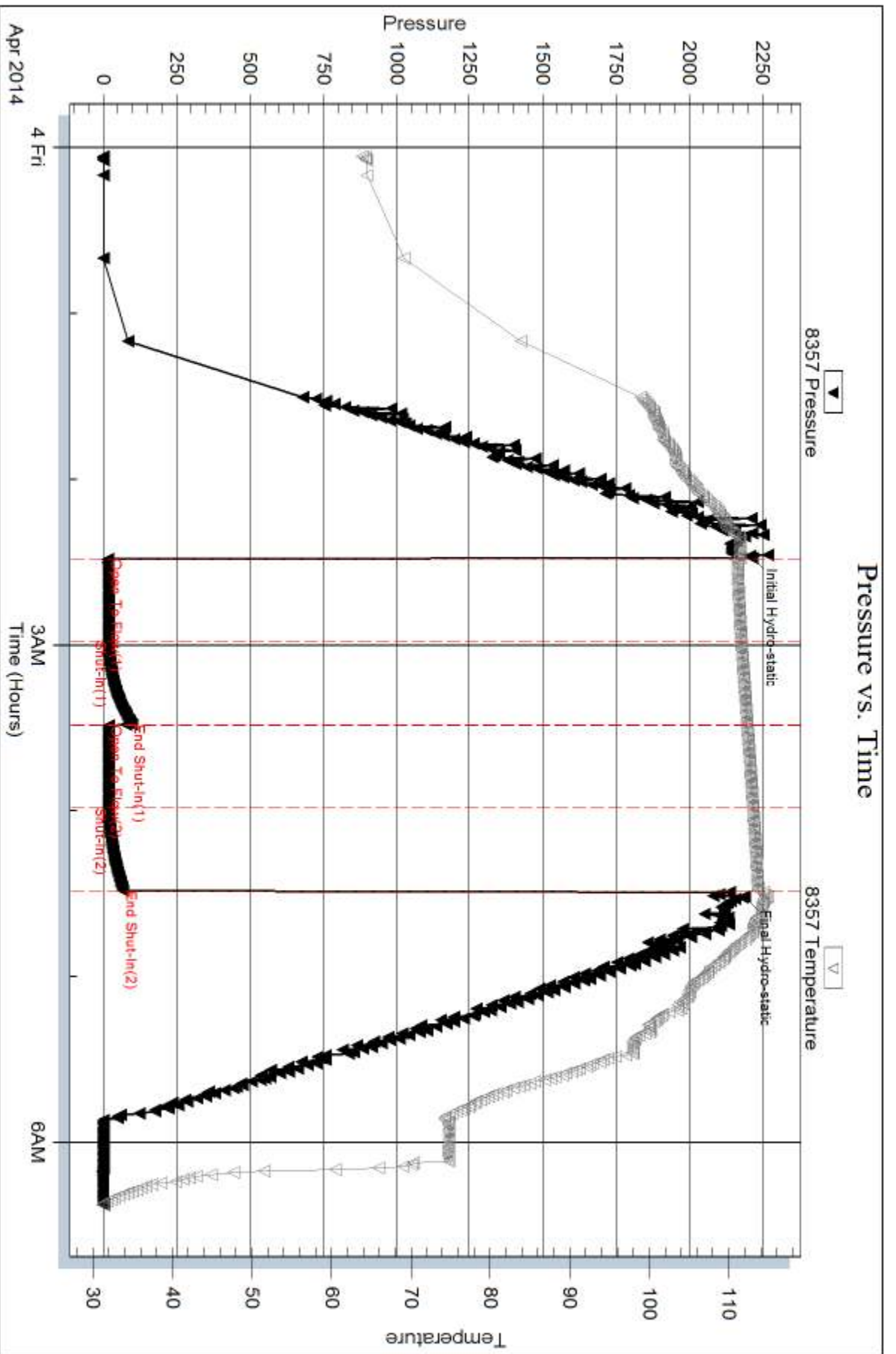
Num Gas Bombs: 0

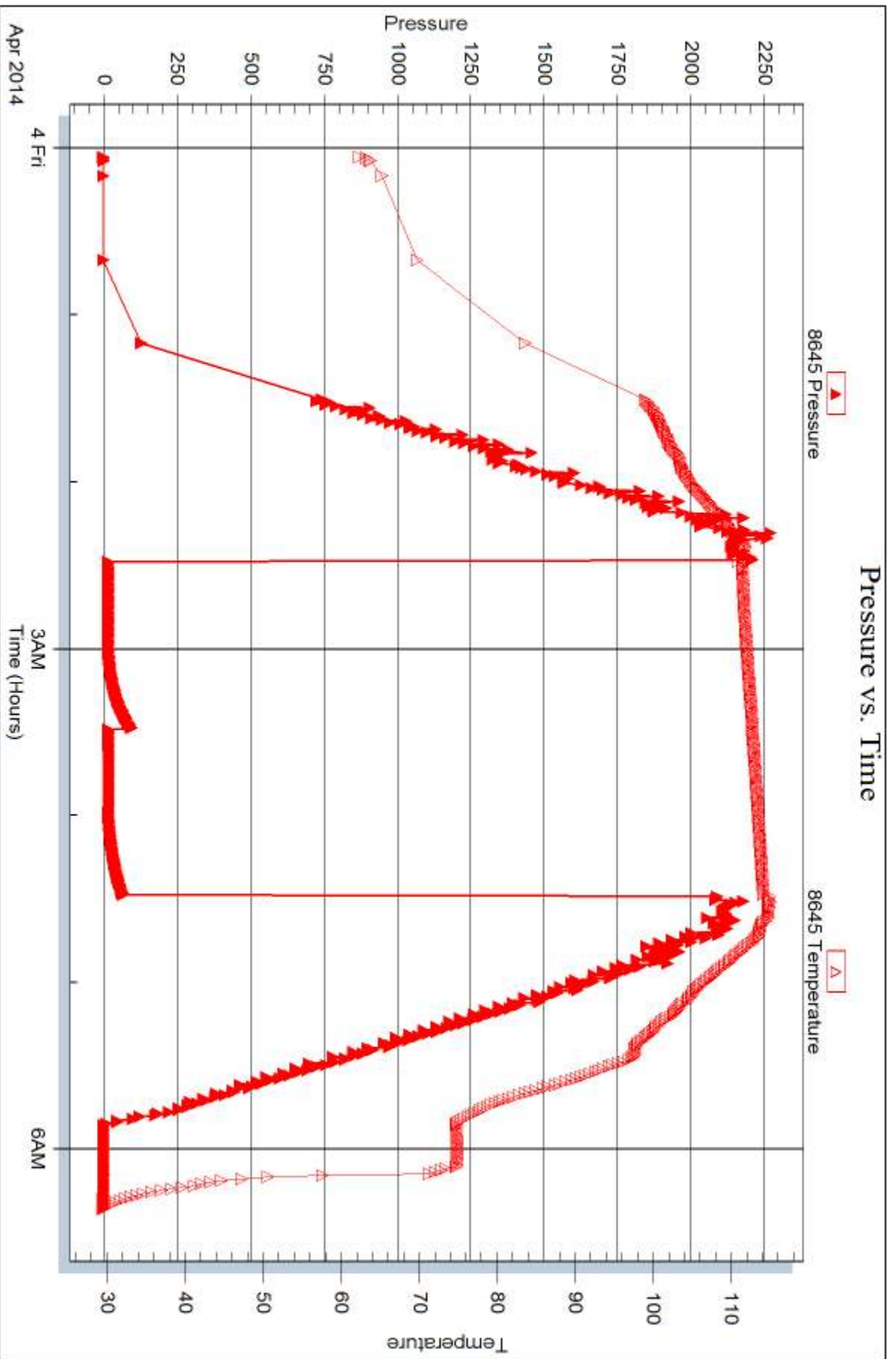
Serial #:

Laboratory Name:

Laboratory Location:

Recovery Comments:







DRILL STEM TEST REPORT

Prepared For: **Landmark Resources Inc.**

1616 S. Voss Rd. STE 600
Houston TX 77057

ATTN: Terry McLeod

1-17s-34w Scott KS

Janzen-Beeson Unit #1-1

Start Date: 2014.04.04 @ 15:56:00

End Date: 2014.04.05 @ 00:28:24

Job Ticket #: 56261 DST #: 3

Trilobite Testing, Inc

PO Box 362 Hays, KS 67601

ph: 785-625-4778 fax: 785-625-5620

Printed: 2014.04.08 @ 10:12:46



TRILOBITE TESTING, INC.

DRILL STEM TEST REPORT

Landmark Resources Inc.

Janzen-Beeson Unit #1-1

1616 S. Voss Rd. STE 600
Houston TX 77057

1-17s-34w Scott KS

Job Ticket: 56261

DST#: 3

ATTN: Terry McLeod

Test Start: 2014.04.04 @ 15:56:00

GENERAL INFORMATION:

Formation: **Pawnee - Ft. Scott**

Deviated: No Whipstock: ft (KB)

Time Tool Opened: 18:38:30

Time Test Ended: 00:28:24

Test Type: Conventional Bottom Hole (Reset)

Tester: Chuck Smith

Unit No: 62

Interval: 4516.00 ft (KB) To 4607.00 ft (KB) (TVD)

Reference Elevations: 3109.00 ft (KB)

Total Depth: 4607.00 ft (KB) (TVD)

3098.00 ft (CF)

Hole Diameter: 7.88 inches Hole Condition: Good

KB to GR/CF: 11.00 ft

Serial #: 8357

Inside

Press@RunDepth: 127.83 psig @ 4518.00 ft (KB)

Capacity: 8000.00 psig

Start Date: 2014.04.04

End Date:

2014.04.05

Last Calib.: 2014.04.05

Start Time: 15:56:05

End Time:

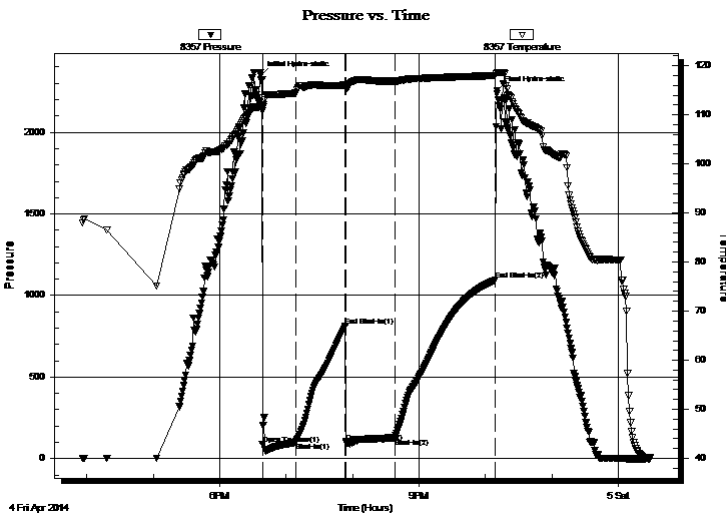
00:28:23

Time On Btm: 2014.04.04 @ 18:36:48

Time Off Btm: 2014.04.04 @ 22:10:18

TEST COMMENT: 30- B.O.B. @ 17 min.
45- No return.
45- B.O.B. @ 6 min.
90- 1/2" Return died at 23 min.

PRESSURE SUMMARY



Time (Min.)	Pressure (psig)	Temp (deg F)	Annotation
0	2349.34	111.59	Initial Hydro-static
2	86.24	110.87	Open To Flow (1)
32	99.63	114.42	Shut-In(1)
77	812.98	116.08	End Shut-In(1)
78	97.82	115.64	Open To Flow (2)
122	127.83	116.85	Shut-In(2)
213	1094.58	118.00	End Shut-In(2)
214	2256.08	118.56	Final Hydro-static

Recovery

Length (ft)	Description	Volume (bbl)
60.00	GOCM 20g 2o 78m	0.30
182.00	GOCM emulsion 55g 10o 15m 20emulsio	0.90
60.00	OSM 100m	0.52
0.00	945' Weak GIP	0.00

* Recovery from multiple tests

Gas Rates

	Choke (inches)	Pressure (psig)	Gas Rate (Mcf/d)



**TRILOBITE
TESTING, INC**

DRILL STEM TEST REPORT

TOOL DIAGRAM

Landmark Resources Inc.

Janzen-Beeson Unit #1-1

1616 S. Voss Rd. STE 600
Houston TX 77057

1-17s-34w Scott KS

Job Ticket: 56261

DST#: 3

ATTN: Terry McLeod

Test Start: 2014.04.04 @ 15:56:00

Tool Information

Drill Pipe:	Length: 4235.00 ft	Diameter: 3.80 inches	Volume: 59.41 bbl	Tool Weight: 2100.00 lb
Heavy Wt. Pipe:	Length: 0.00 ft	Diameter: 0.00 inches	Volume: 0.00 bbl	Weight set on Packer: 22000.00 lb
Drill Collar:	Length: 277.00 ft	Diameter: 2.25 inches	Volume: 1.36 bbl	Weight to Pull Loose: 75000.00 lb
			<u>Total Volume: 60.77 bbl</u>	Tool Chased 0.00 ft
Drill Pipe Above KB:	18.50 ft			String Weight: Initial 70000.00 lb
Depth to Top Packer:	4516.00 ft			Final 72000.00 lb
Depth to Bottom Packer:	ft			
Interval between Packers:	91.00 ft			
Tool Length:	113.50 ft			
Number of Packers:	2	Diameter: 6.75 inches		

Tool Comments:

Tool Description	Length (ft)	Serial No.	Position	Depth (ft)	Accum. Lengths
------------------	-------------	------------	----------	------------	----------------

Change Over Sub	1.00			4494.50	
Shut In Tool	5.00			4499.50	
Hydraulic tool	5.00			4504.50	
Safety Joint	2.50			4507.00	
Packer	5.00			4512.00	22.50 Bottom Of Top Packer
Packer	4.00			4516.00	
Stubb	1.00			4517.00	
Perforations	1.00			4518.00	
Recorder	0.00	8357	Inside	4518.00	
Recorder	0.00	8645	Outside	4518.00	
Perforations	22.00			4540.00	
Change Over Sub	1.00			4541.00	
Drill Pipe	62.00			4603.00	
Change Over Sub	1.00			4604.00	
Bullnose	3.00			4607.00	91.00 Bottom Packers & Anchor

Total Tool Length: 113.50



**TRILOBITE
TESTING, INC**

DRILL STEM TEST REPORT

FLUID SUMMARY

Landmark Resources Inc.

Janzen-Beeson Unit #1-1

1616 S. Voss Rd. STE 600
Houston TX 77057

1-17s-34w Scott KS

Job Ticket: 56261

DST#: 3

ATTN: Terry McLeod

Test Start: 2014.04.04 @ 15:56:00

Mud and Cushion Information

Mud Type: Gel Chem

Cushion Type:

Oil API:

deg API

Mud Weight: 9.00 lb/gal

Cushion Length:

ft

Water Salinity:

ppm

Viscosity: 58.00 sec/qt

Cushion Volume:

bbbl

Water Loss: 7.98 in³

Gas Cushion Type:

Resistivity: ohm.m

Gas Cushion Pressure:

psig

Salinity: 3800.00 ppm

Filter Cake: 1.00 inches

Recovery Information

Recovery Table

Length ft	Description	Volume bbbl
60.00	GOCM 20g 2o 78m	0.295
182.00	GOCM emulsion 55g 10o 15m 20emulsion	0.895
60.00	OSM 100m	0.523
0.00	945' Weak GIP	0.000

Total Length: 302.00 ft

Total Volume: 1.713 bbl

Num Fluid Samples: 0

Num Gas Bombs: 0

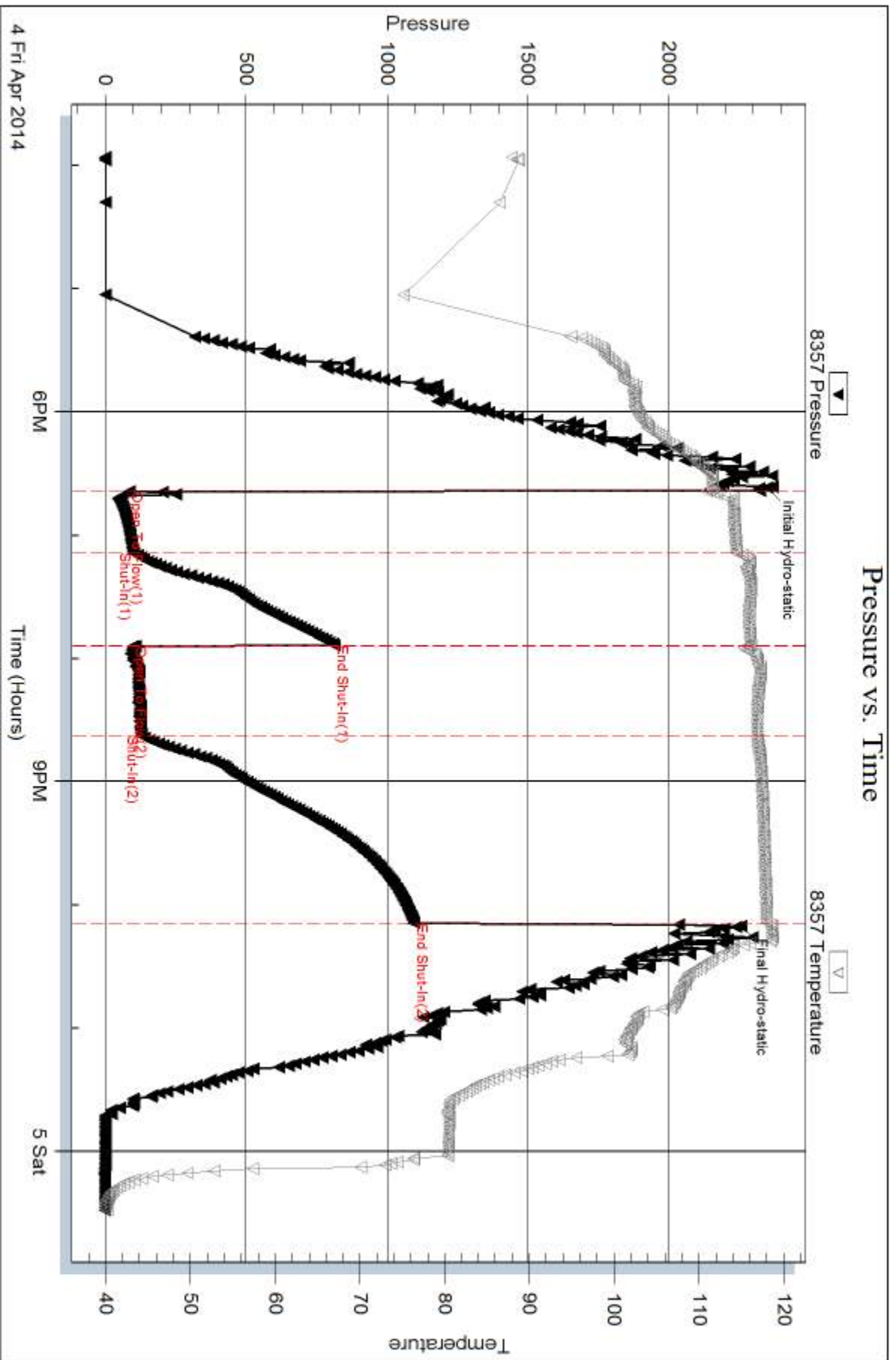
Serial #:

Laboratory Name:

Laboratory Location:

Recovery Comments:

Pressure vs. Time



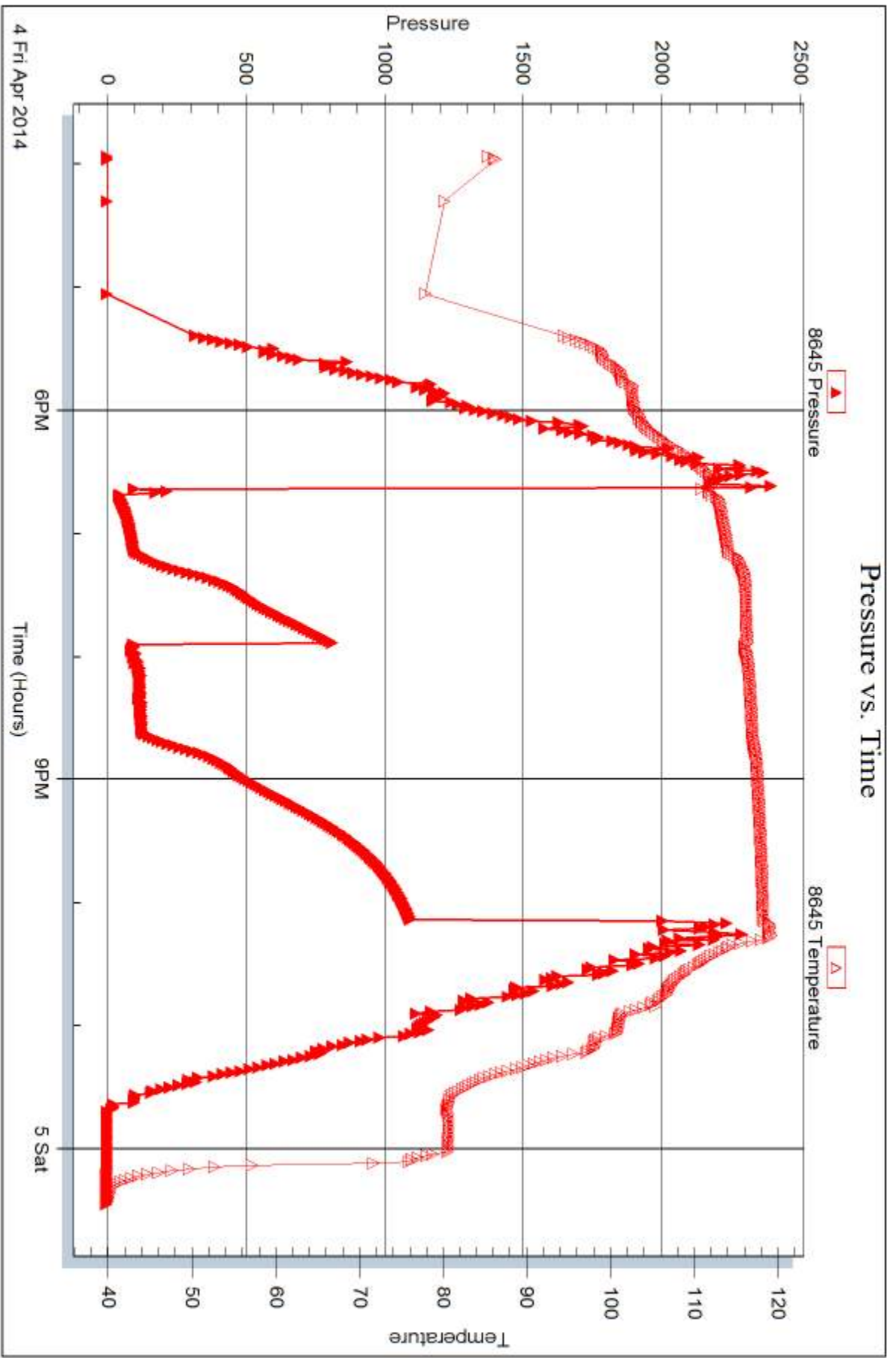
Serial #: 8645

Outside

Landmark Resources Inc.

1-17/s-34w Scott KS

DST Test Number: 3



Triobite Testing, Inc

Ref. No: 56261

Printed: 2014.04.08 @ 10:12:49



DRILL STEM TEST REPORT

Prepared For: **Landmark Resources Inc.**

1616 S. Voss Rd. STE 600
Houston TX 77057

ATTN: Terry McLeod

1-17s-34w Scott KS

Janzen-Beeson Unit #1-1

Start Date: 2014.04.05 @ 13:11:00

End Date: 2014.04.05 @ 20:53:47

Job Ticket #: 56262 DST #: 4

Trilobite Testing, Inc
PO Box 362 Hays, KS 67601
ph: 785-625-4778 fax: 785-625-5620

Printed: 2014.04.08 @ 10:11:04

Landmark Resources Inc.

Janzen-Beeson Unit #1-1-1

1-17s-34w Scott KS

DST # 4

Johnson

2014.04.05



**TRILOBITE
TESTING, INC**

DRILL STEM TEST REPORT

Landmark Resources Inc.

Janzen-Beeson Unit #1-1

1616 S. Voss Rd. STE 600
Houston TX 77057

1-17s-34w Scott KS

Job Ticket: 56262

DST#: 4

ATTN: Terry McLeod

Test Start: 2014.04.05 @ 13:11:00

GENERAL INFORMATION:

Formation: **Johnson**

Deviated: No Whipstock: ft (KB)

Time Tool Opened: 15:03:42

Time Test Ended: 20:53:47

Test Type: Conventional Bottom Hole (Reset)

Tester: Chuck Smith

Unit No: 62

Interval: 4655.00 ft (KB) To 4725.00 ft (KB) (TVD)

Reference Elevations: 3109.00 ft (KB)

Total Depth: 4725.00 ft (KB) (TVD)

3098.00 ft (CF)

Hole Diameter: 7.88 inches Hole Condition: Good

KB to GR/CF: 11.00 ft

Serial #: 8357 Inside

Press@RunDepth: 100.37 psig @ 4657.00 ft (KB)

Capacity: 8000.00 psig

Start Date: 2014.04.05 End Date: 2014.04.05

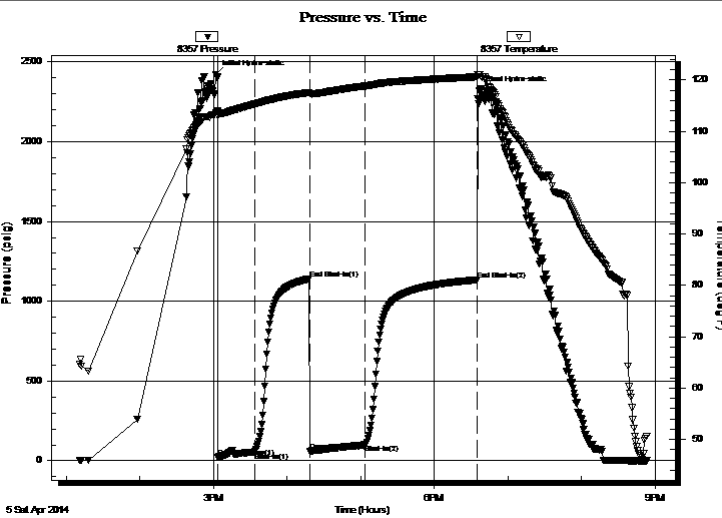
Last Calib.: 2014.04.05

Start Time: 13:11:05 End Time: 20:53:48

Time On Btm: 2014.04.05 @ 15:02:00

Time Off Btm: 2014.04.05 @ 18:36:36

TEST COMMENT: 30- 9" Blow .
45- Surface return died @ 20 min.
45- B.O.B. @ 40 min.
90- Surface return died @ 25 min.



PRESSURE SUMMARY

Time (Min.)	Pressure (psig)	Temp (deg F)	Annotation
0	2422.24	113.59	Initial Hydro-static
2	23.32	112.96	Open To Flow (1)
32	54.99	115.28	Shut-In(1)
77	1140.72	117.55	End Shut-In(1)
77	58.04	117.33	Open To Flow (2)
122	100.37	118.82	Shut-In(2)
213	1134.04	120.62	End Shut-In(2)
215	2318.43	121.07	Final Hydro-static

Recovery

Length (ft)	Description	Volume (bbl)
120.00	GOCM 10g 30o 60m	0.59
60.00	GMCO 15g 40m 45o	0.30
5.00	OCM 30o 70m	0.02
0.00	120' Weak GIP	0.00

Gas Rates

	Choke (inches)	Pressure (psig)	Gas Rate (Mcf/d)

* Recovery from multiple tests



**TRILOBITE
TESTING, INC**

DRILL STEM TEST REPORT

TOOL DIAGRAM

Landmark Resources Inc.

Janzen-Beeson Unit #1-1

1616 S. Voss Rd. STE 600
Houston TX 77057

1-17s-34w Scott KS

Job Ticket: 56262

DST#: 4

ATTN: Terry McLeod

Test Start: 2014.04.05 @ 13:11:00

Tool Information

Drill Pipe:	Length: 4365.00 ft	Diameter: 3.80 inches	Volume: 61.23 bbl	Tool Weight: 2100.00 lb
Heavy Wt. Pipe:	Length: 0.00 ft	Diameter: 0.00 inches	Volume: 0.00 bbl	Weight set on Packer: 22000.00 lb
Drill Collar:	Length: 277.00 ft	Diameter: 2.25 inches	Volume: 1.36 bbl	Weight to Pull Loose: 90000.00 lb
			<u>Total Volume: 62.59 bbl</u>	Tool Chased 0.00 ft
Drill Pipe Above KB:	9.50 ft			String Weight: Initial 75000.00 lb
Depth to Top Packer:	4655.00 ft			Final 76000.00 lb
Depth to Bottom Packer:	ft			
Interval between Packers:	70.00 ft			
Tool Length:	92.50 ft			
Number of Packers:	2	Diameter: 6.75 inches		

Tool Comments:

Tool Description	Length (ft)	Serial No.	Position	Depth (ft)	Accum. Lengths
------------------	-------------	------------	----------	------------	----------------

Change Over Sub	1.00			4633.50	
Shut In Tool	5.00			4638.50	
Hydraulic tool	5.00			4643.50	
Safety Joint	2.50			4646.00	
Packer	5.00			4651.00	22.50 Bottom Of Top Packer
Packer	4.00			4655.00	
Stubb	1.00			4656.00	
Perforations	1.00			4657.00	
Recorder	0.00	8357	Inside	4657.00	
Recorder	0.00	8645	Outside	4657.00	
Perforations	1.00			4658.00	
Change Over Sub	1.00			4659.00	
Drill Pipe	62.00			4721.00	
Change Over Sub	1.00			4722.00	
Bullnose	3.00			4725.00	70.00 Bottom Packers & Anchor

Total Tool Length: 92.50



**TRILOBITE
TESTING, INC**

DRILL STEM TEST REPORT

FLUID SUMMARY

Landmark Resources Inc.

Janzen-Beeson Unit #1-1

1616 S. Voss Rd. STE 600
Houston TX 77057

1-17s-34w Scott KS

Job Ticket: 56262

DST#: 4

ATTN: Terry McLeod

Test Start: 2014.04.05 @ 13:11:00

Mud and Cushion Information

Mud Type: Gel Chem
Mud Weight: 9.00 lb/gal
Viscosity: 49.00 sec/qt
Water Loss: 8.79 in³
Resistivity: ohm.m
Salinity: 5000.00 ppm
Filter Cake: 1.00 inches

Cushion Type:
Cushion Length: ft
Cushion Volume: bbl
Gas Cushion Type:
Gas Cushion Pressure: psig

Oil API: deg API
Water Salinity: ppm

Recovery Information

Recovery Table

Length ft	Description	Volume bbl
120.00	GOCM 10g 30o 60m	0.590
60.00	GMCO 15g 40m 45o	0.295
5.00	OCM 30o 70m	0.025
0.00	120' Weak GIP	0.000

Total Length: 185.00 ft Total Volume: 0.910 bbl

Num Fluid Samples: 0

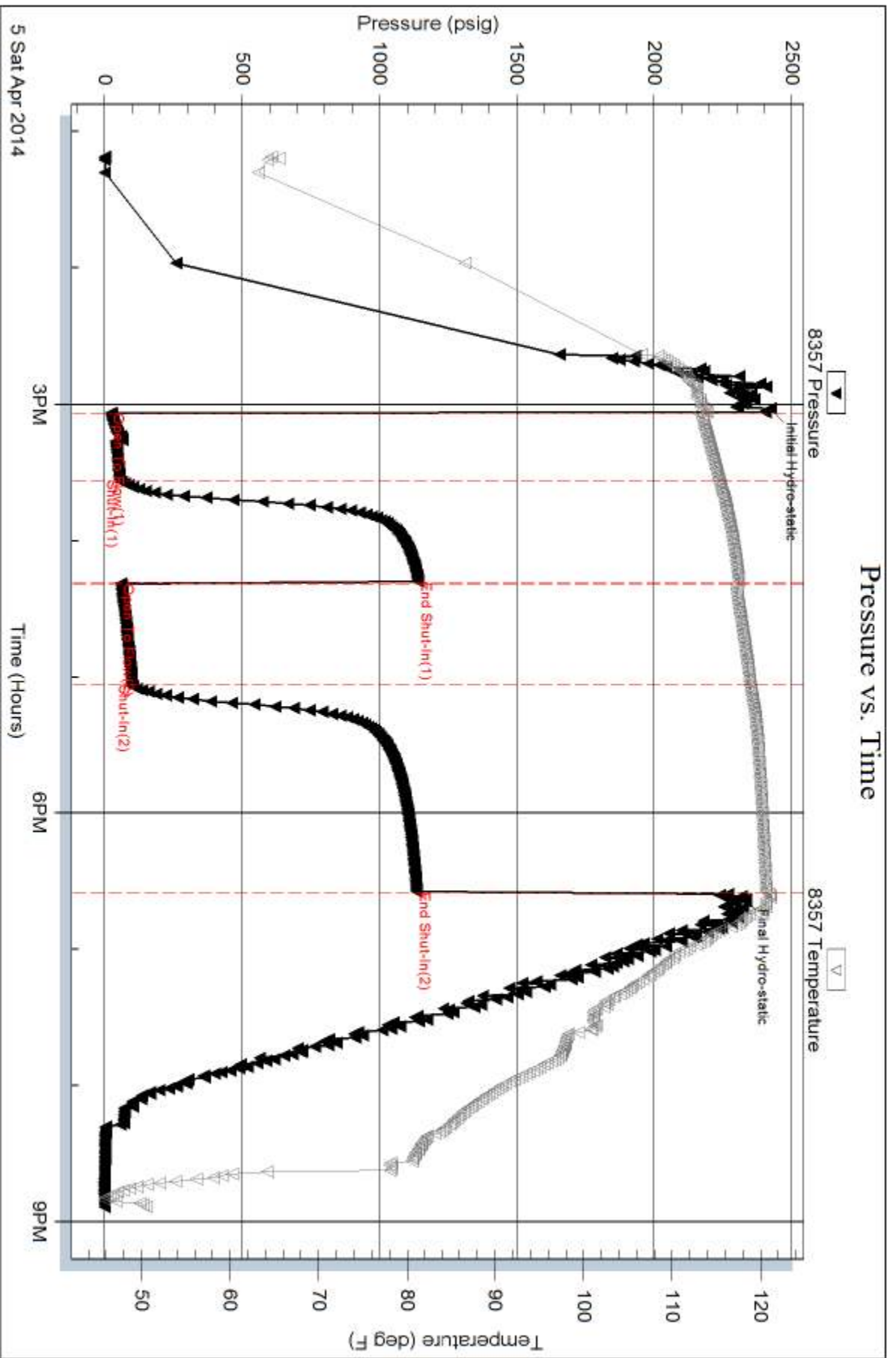
Num Gas Bombs: 0

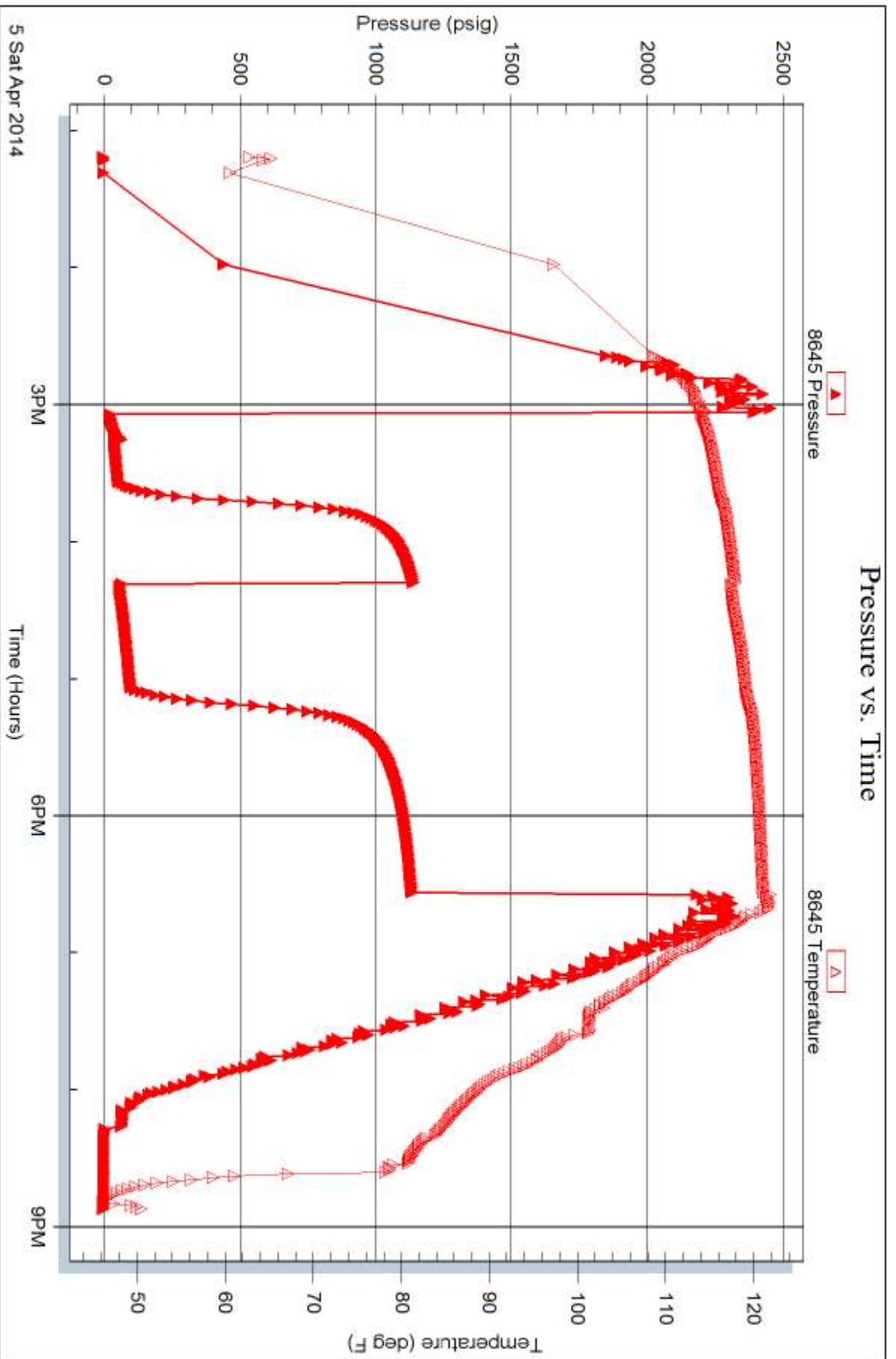
Serial #:

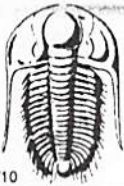
Laboratory Name:

Laboratory Location:

Recovery Comments:







TRILOBITE TESTING INC.

1515 Commerce Parkway • Hays, Kansas 67601

Test Ticket

NO. 56872

4/10

Well Name & No. Janzen - Beeson Unit # 1-1 Test No. 1 Date 4/3/14
 Company Landmark Resources Inc. Elevation 3109 KB 3098 GL
 Address 1616 S. Voss Rd STE 600 Houston Tx 77057
 Co. Rep / Geo. Terry McLeod Rig Murfin # 21
 Location: Sec. 1 Twp. 17S Rge. 34W Co. Scott State KS

Interval Tested 4413 - 4460 Zone Tested Marmaton
 Anchor Length 47' Drill Pipe Run 4143 Mud Wt. 9.3
 Top Packer Depth 4409 Drill Collars Run 277' Vis 57
 Bottom Packer Depth 4413 Wt. Pipe Run 0 WL 7.2
 Total Depth 4460 Chlorides 3500 ppm System LCM 3
 Blow Description IF - 2" built to BoB @ 3 mins
ISI - Surface blow @ 2 mins built to 1 3/4"
FF - Surface blow started @ 17 mins built to 1"
FSI - No return

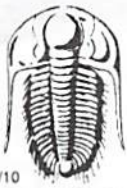
Rec	Feet of	%gas	%oil	%water	%mud
479'	GMCO	30	55		15
		%gas	%oil	%water	%mud
		%gas	%oil	%water	%mud
		%gas	%oil	%water	%mud
		%gas	%oil	%water	%mud

Rec Total 479' BHT 120° Gravity — API RW — @ — F Chlorides — ppm

(A) Initial Hydrostatic 2180 Test 1250 T-On Location 04:00
 (B) First Initial Flow 82 Jars NC T-Started 04:50
 (C) First Final Flow 189 Safety Joint 75 T-Open 07:26
 (D) Initial Shut-In 193 Circ Sub NC T-Pulled 10:56
 (E) Second Initial Flow 191 Hourly Standby X 1/2 T-Out 13:26
 (F) Second Final Flow 191 Mileage 208 RT 52.70 Comments 393' GIP
 (G) Final Shut-In 199 Sampler _____
 (H) Final Hydrostatic 2076 Straddle _____ Ruined Shale Packer _____
 Shale Packer _____ Ruined Packer _____
 Extra Packer _____ Extra Copies _____
 Extra Recorder _____ Sub Total 0
 Day Standby _____ Total 1377.70
 Accessibility _____ MP/DST Disc't _____
 Sub Total 1377.70

Approved By _____ Our Representative Terry McLeod

Trilobite Testing Inc. shall not be liable for damaged of any kind of the property or personnel of the one for whom a test is made, or for any loss suffered or sustained, directly or indirectly, through the use of its equipment, or its statements or opinion concerning the results of any test, tools lost or damaged in the hole shall be paid for at cost by the party for whom the test is made.



TRILOBITE TESTING INC.

1515 Commerce Parkway • Hays, Kansas 67601

Ryan N. san dst #1

Test Ticket

NO. 56260

Well Name & No. Janzen-Beeson Unit 1-1 Test No. 2 Date 4-3-14
 Company Landmark Resources Inc. Elevation 3109 KB 3098 GL
 Address 1616 E. Voss Rd. Suite 600 Houston, TX 77057
 Co. Rep / Geo. Terry McLead Rig MDC #21
 Location: Sec. 1 Twp. 17s Rge. 34w Co. Scott State Ks

Interval Tested 4465 - 4525 Zone Tested Altament
 Anchor Length 60 Drill Pipe Run 4173 Mud Wt. 9.3
 Top Packer Depth 4461 Drill Collars Run 277 Vis 55
 Bottom Packer Depth 4465 Wt. Pipe Run 0 WL 7.2
 Total Depth 4525 Chlorides 3500 ppm System LCM 2#
 Blow Description Weak surface blow
No return.
No blow.
No blow

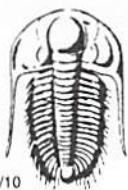
Rec	Feet of	%gas	%oil	%water	%mud
Rec <u>2</u>	Feet of <u>M</u>			%water <u>100</u>	%mud
Rec	Feet of	%gas	%oil	%water	%mud
Rec	Feet of	%gas	%oil	%water	%mud
Rec	Feet of	%gas	%oil	%water	%mud

Rec Total 2 BHT 114 Gravity - API RW @ - ° F Chlorides - ppm

(A) Initial Hydrostatic <u>2208</u>	<input checked="" type="checkbox"/> Test <u>1250</u>	T-On Location <u>23:55</u>
(B) First Initial Flow <u>17</u>	<input type="checkbox"/> Jars	T-Started <u>00:03</u>
(C) First Final Flow <u>18</u>	<input checked="" type="checkbox"/> Safety Joint <u>75</u>	T-Open <u>2:29</u>
(D) Initial Shut-In <u>97</u>	<input checked="" type="checkbox"/> Circ Sub <u>NIC</u>	T-Pulled <u>4:29</u>
(E) Second Initial Flow <u>18</u>	<input type="checkbox"/> Hourly Standby	T-Out <u>6:23</u>
(F) Second Final Flow <u>19</u>	<input checked="" type="checkbox"/> Mileage <u>34 RT</u> 52.70	Comments
(G) Final Shut-In <u>69</u>	<input type="checkbox"/> Sampler	
(H) Final Hydrostatic <u>2189</u>	<input type="checkbox"/> Straddle	
	<input type="checkbox"/> Shale Packer	<input type="checkbox"/> Ruined Shale Packer
	<input type="checkbox"/> Extra Packer	<input type="checkbox"/> Ruined Packer
	<input type="checkbox"/> Extra Recorder	Sub Total <u>0</u>
	<input type="checkbox"/> Day Standby	Total <u>1377.70</u>
	<input type="checkbox"/> Accessibility	MP/DST Disc't
	Sub Total <u>1377.70</u>	

Approved By [Signature] Our Representative Chuck Smith

Trilobite Testing Inc. shall not be liable for damaged of any kind of the property or personnel of the one for whom a test is made, or for any loss suffered or sustained, directly or indirectly, through the use of its equipment, or its statements or opinion concerning the results of any test, tools lost or damaged in the hole shall be paid for at cost by the party for whom the test is made.



TRILOBITE TESTING INC.

1515 Commerce Parkway • Hays, Kansas 67601

Test Ticket

NO. 56261

Well Name & No. Janzen - Beeson Unit 1-1 Test No. 3 Date 4-4-14
 Company Landmark Resources, Inc. Elevation 3109 KB 3098 GL
 Address 1616 S. Voss Rd. Suite 600 Houston, TX 77057
 Co. Rep / Geo. Terry McLeod Rig MDC#21
 Location: Sec. 1 Twp. 17s Rge. 34w Co. Scott State KS

Interval Tested 4516 - 4607 Zone Tested Pawnee - Ft. Scott
 Anchor Length 91 Drill Pipe Run 4235 Mud Wt. 9.4
 Top Packer Depth 4512 Drill Collars Run 277 Vis 58
 Bottom Packer Depth 4516 Wt. Pipe Run 0 WL 8.0
 Total Depth 4607 Chlorides 3800 ppm System LCM 2#
 Blow Description B.O.B. @ 17 min.
No return.
B.O.B. @ 6 min.
1/2" Return died @ 23 min.

Rec	Feet of	%gas	%oil	%water	%mud
Rec <u>60</u>	Feet of <u>OSM</u>	%gas	%oil	%water <u>100</u>	%mud
Rec <u>182</u>	Feet of <u>GOCM emulsion</u>	^{55%} 20% emulsion %gas <u>10</u>	%oil	%water <u>15</u>	%mud
Rec <u>60</u>	Feet of <u>GOCM</u>	20 %gas <u>2</u>	%oil	%water <u>78</u>	%mud
Rec	Feet of <u>945' Weak G-IP</u>	%gas	%oil	%water	%mud

Rec Total 302 BHT 118 Gravity — API RW @ — °F Chlorides — ppm

(A) Initial Hydrostatic <u>2349</u>	<input checked="" type="checkbox"/> Test <u>1250</u>	T-On Location <u>15:50</u>
(B) First Initial Flow <u>86</u>	<input type="checkbox"/> Jars	T-Started <u>15:56</u>
(C) First Final Flow <u>100</u>	<input checked="" type="checkbox"/> Safety Joint <u>75</u>	T-Open <u>18:39</u>
(D) Initial Shut-In <u>813</u>	<input checked="" type="checkbox"/> Circ Sub <u>NK</u>	T-Pulled <u>22:09</u>
(E) Second Initial Flow <u>98</u>	<input type="checkbox"/> Hourly Standby	T-Out <u>00:28</u>
(F) Second Final Flow <u>128</u>	<input checked="" type="checkbox"/> Mileage <u>34RT</u> 52.70	Comments
(G) Final Shut-In <u>1095</u>	<input type="checkbox"/> Sampler	
(H) Final Hydrostatic <u>2256</u>	<input type="checkbox"/> Straddle	<input type="checkbox"/> Ruined Shale Packer
Initial Open <u>30</u>	<input type="checkbox"/> Shale Packer	<input checked="" type="checkbox"/> Ruined Packer <u>320</u>
Initial Shut-In <u>45</u>	<input type="checkbox"/> Extra Packer	<input type="checkbox"/> Extra Copies
Final Flow <u>45</u>	<input type="checkbox"/> Extra Recorder	Sub Total <u>0</u>
Final Shut-In <u>90</u>	<input type="checkbox"/> Day Standby	Total <u>1697.70</u>
	<input type="checkbox"/> Accessibility	MP/DST Disc't
	Sub Total <u>1377.70</u>	

Approved By _____ Our Representative Chuck Amish

Trilobite Testing Inc. shall not be liable for damaged of any kind of the property or personnel of the one for whom a test is made, or for any loss suffered or sustained, directly or indirectly, through the use of its equipment, or its statements or opinion concerning the results of any test, tools lost or damaged in the hole shall be paid for at cost by the party for whom the test is made.



TRILOBITE TESTING INC.

1515 Commerce Parkway • Hays, Kansas 67601

Test Ticket

NO. 56262

Well Name & No. Janzen - Beeson Unit 1-1 Test No. 4 Date 4-5-14
 Company Landmark Resources, Inc. Elevation 3109 KB 3098 GL
 Address 1616 S Voss Rd. Houston, TX 77057
 Co. Rep / Geo. Terry McLeod Rig MDX #21
 Location: Sec. 1 Twp. 17s Rge. 34w Co. ScotH State Ks

Interval Tested 4655 - 4725 Zone Tested Johnson
 Anchor Length 70 Drill Pipe Run 4365 Mud Wt. 9.4
 Top Packer Depth 4651 Drill Collars Run 277 Vis 49
 Bottom Packer Depth 4655 Wt. Pipe Run 0 WL 8.8
 Total Depth 4725 Chlorides 5000 ppm System LCM 2⁺
 Blow Description 9" Blow.
Surface return died @ 20 min.
B.O.B @ 40 min.
Surface return died @ 25 min.

Rec	Feet of	%gas	%oil	%water	%mud
Rec <u>5</u>	Feet of <u>OCM</u>	%gas	<u>30</u> %oil	%water <u>70</u>	%mud
Rec <u>60</u>	Feet of <u>GMC0</u>	<u>15</u> %gas	<u>45</u> %oil	%water <u>40</u>	%mud
Rec <u>120</u>	Feet of <u>GOCM</u>	<u>10</u> %gas	<u>30</u> %oil	%water <u>60</u>	%mud
Rec	Feet of <u>120' Weak GIP</u>	%gas	%oil	%water	%mud

Rec Total 185 BHT 121 Gravity - API RW @ °F Chlorides - ppm

(A) Initial Hydrostatic <u>2422</u>	<input checked="" type="checkbox"/> Test <u>1250</u>	T-On Location <u>13:10</u>
(B) First Initial Flow <u>23</u>	<input type="checkbox"/> Jars	T-Started <u>13:11</u>
(C) First Final Flow <u>55</u>	<input checked="" type="checkbox"/> Safety Joint <u>75</u>	T-Open <u>15:04</u>
(D) Initial Shut-In <u>1141</u>	<input checked="" type="checkbox"/> Circ Sub <u>NIC</u>	T-Pulled <u>18:35</u>
(E) Second Initial Flow <u>58</u>	<input type="checkbox"/> Hourly Standby	T-Out <u>20:54</u>
(F) Second Final Flow <u>100</u>	<input checked="" type="checkbox"/> Mileage <u>34RT X 2</u> <u>105.40</u>	Comments <u>Picked up TOOI 4-6-14</u>
(G) Final Shut-In <u>1134</u>	<input type="checkbox"/> Sampler	<u>6:30 a.m. no test</u>
(H) Final Hydrostatic <u>2318</u>	<input type="checkbox"/> Straddle	<input type="checkbox"/> Ruined Shale Packer
Initial Open <u>30</u>	<input type="checkbox"/> Shale Packer	<input type="checkbox"/> Ruined Packer
Initial Shut-In <u>45</u>	<input type="checkbox"/> Extra Packer	<input type="checkbox"/> Extra Copies
Final Flow <u>45</u>	<input type="checkbox"/> Extra Recorder	Sub Total <u>0</u>
Final Shut-In <u>90</u>	<input type="checkbox"/> Day Standby	Total <u>1430.40</u>
	<input type="checkbox"/> Accessibility	MP/DST Disc't
	Sub Total <u>1430.40</u>	

Approved By Terry L. McLeod Our Representative Chuck Smith

Trilobite Testing Inc. shall not be liable for damaged of any kind of the property or personnel of the one for whom a test is made, or for any loss suffered or sustained, directly or indirectly, through the use of its equipment, or its statements or opinion concerning the results of any test, tools lost or damaged in the hole shall be paid for at cost by the party for whom the test is made.