

CEMENT BOND LOG

Company **MIKE KELSO OIL, INC.**
 Well **MEYER ANKERHOLZ #13**
 Field **GENESEO - EDWARDS**
 County **RICE**
 State **KANSAS**

Company **MIKE KELSO OIL, INC.**
 Well **MEYER ANKERHOLZ #13**
 Field **GENESEO - EDWARDS**
 County **RICE** State **KANSAS**

Location **1,650' FSL & 330' FWL**
 SEC. **30** TWP. **18S** RGE. **7W**
 Permanent Datum **GROUND LEVEL** Elevation **1717**
 Log Measured From **KELLY BUSHING 7' AGL**
 Drilling Measured From **KELLY BUSHING**
 Other Services **PERFS**
 Elevation **K.B. 1724**
D.F. 1717
G.L. 1717

Date	6-4-2014						
Run Number	ONE						
Depth Driller	3345						
Depth Logger	3388						
Bottom Logged Interval	3387						
Top Log Interval	1300						
Open Hole Size	WATER						
Type Fluid	WATER						
Density / Viscosity							
Max. Recorded Temp.							
Estimated Cement Top	1500						
Time Well Ready							
Time Logger on Bottom							
Equipment Number	#53						
Location	GREAT BEND						
Recorded By	LANCE GREGG						
Witnessed By	MR. KELSO						
Borehole Record		Tubing Record					
Run Number	Bit	From	To	Size	Weight	From	To
Casing Record	Size	Wgt/Ft		Top	Bottom		
Surface String	8.625	23#		0	N/A		
Prot. String							
Production String	5.5	15.5		0	3344		
Liner							

<<< Fold Here >>>

All interpretations are opinions based on inferences from electrical or other measurements and we cannot and do not guarantee the accuracy or correctness of any interpretation, and we shall not, except in the case of gross or willful negligence on our part, be liable or responsible for any loss, costs, damages, or expenses incurred or sustained by anyone resulting from any interpretation made by any of our officers, agents or employees. These interpretations are also subject to our general terms and conditions set out in our current Price Schedule.

Comments

THANK YOU FOR USING LOG TECH OF KANSAS

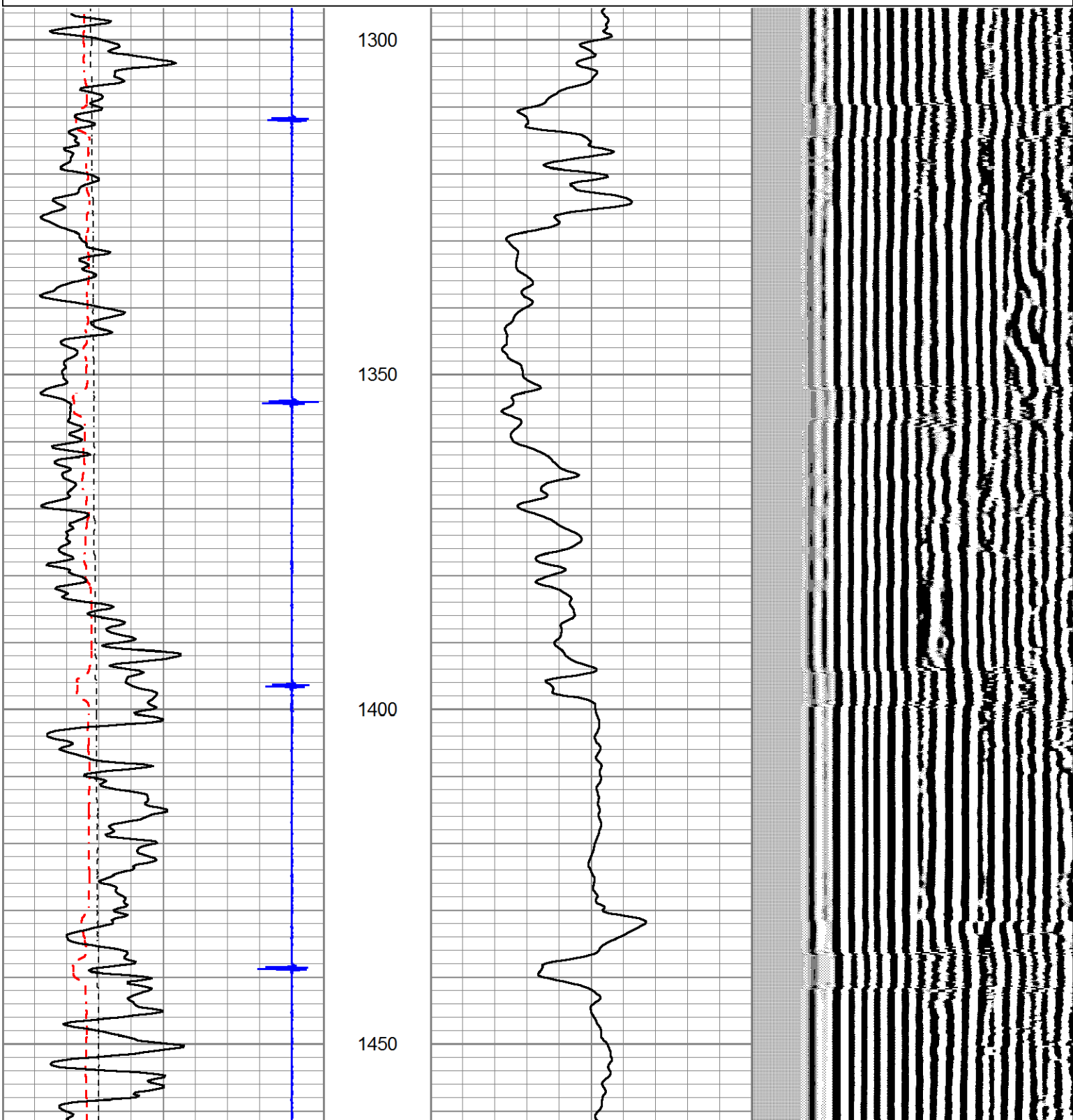
DIRECTIONS

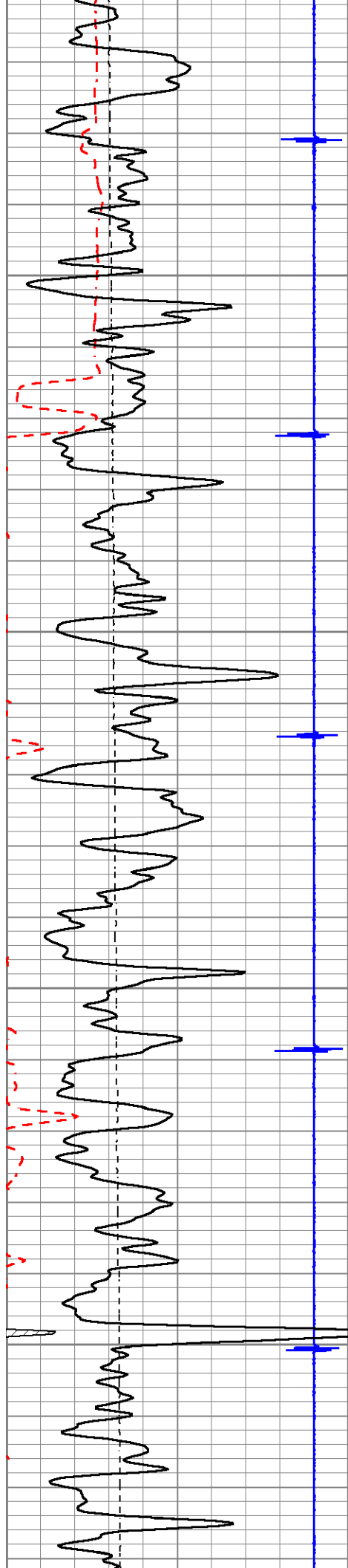
GENESEO, KS.
 EAST TO ROAD 19 TH
 4 3/4 SOUTH EAST INTO

Database File meyers13.db
 Dataset Pathname pass2
 Presentation Format scbl_dr
 Dataset Creation Wed Jun 04 09:41:10 2014
 Charted by Depth in Feet scaled 1:240

320	TT3FT (usec)	120
-9	Collar Locator	1
0	LTEN (lb)	1200
0	Gamma Ray (GAPI)	150
150	Gamma Ray (GAPI)	300
300	Gamma Ray (GAPI)	450

0 Amplitude (mV) 100 200 VDL 1200





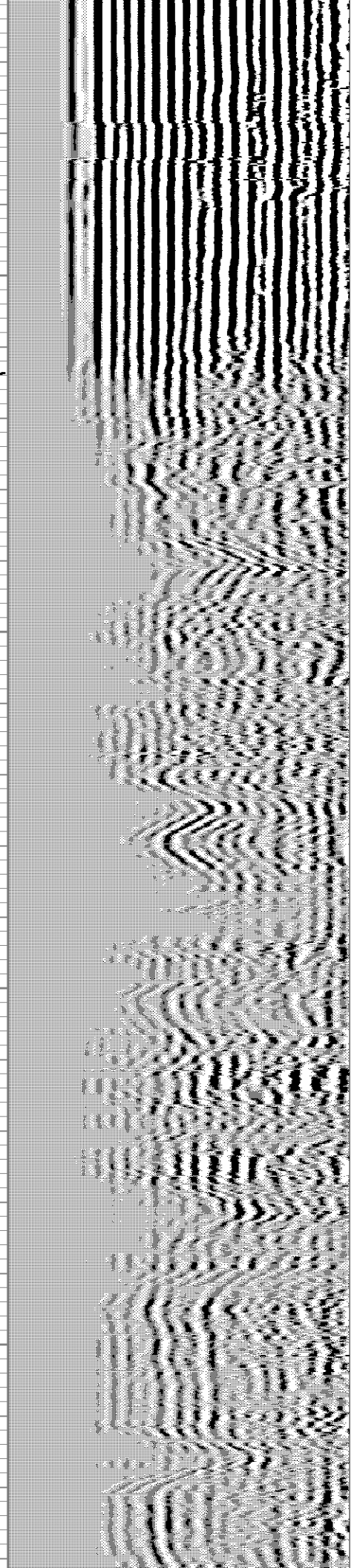
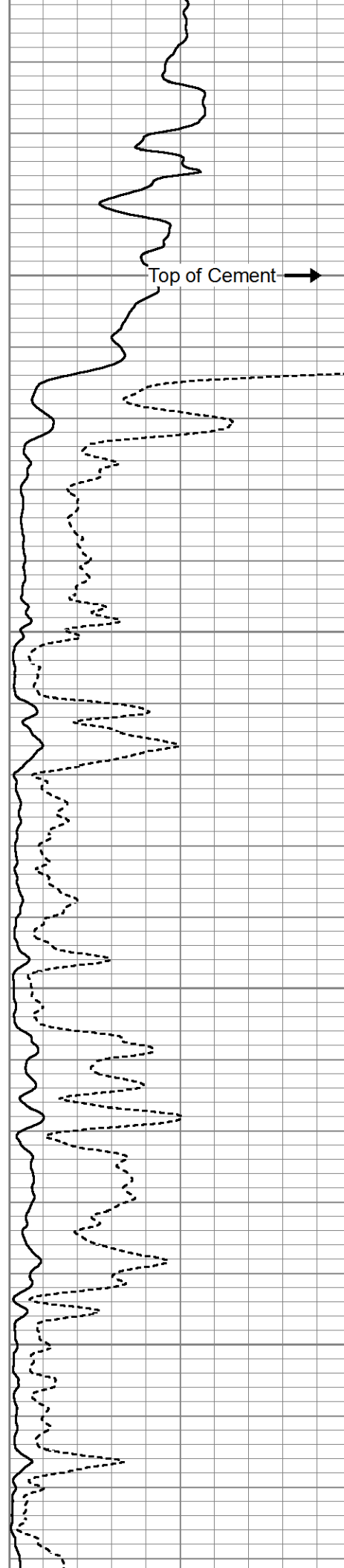
1500

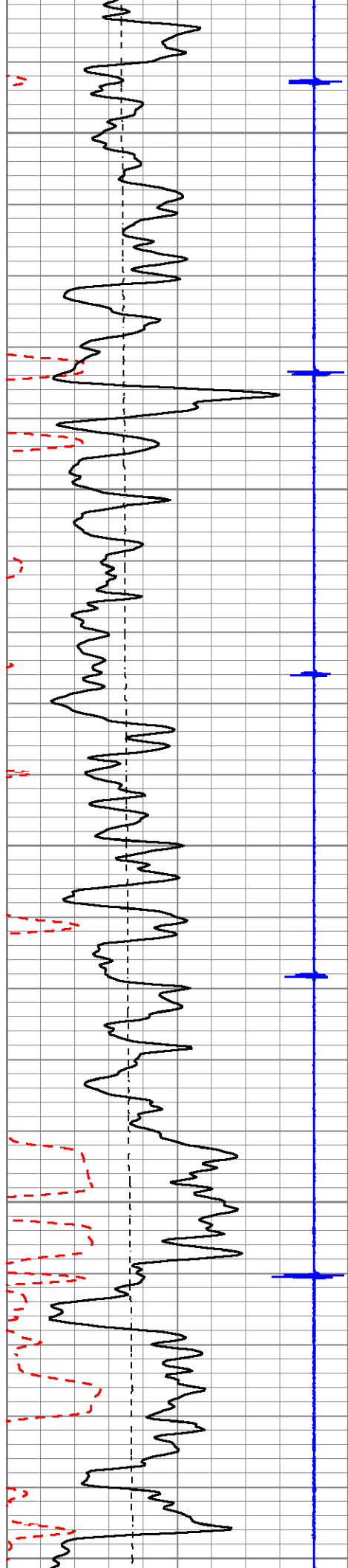
Top of Cement →

1550

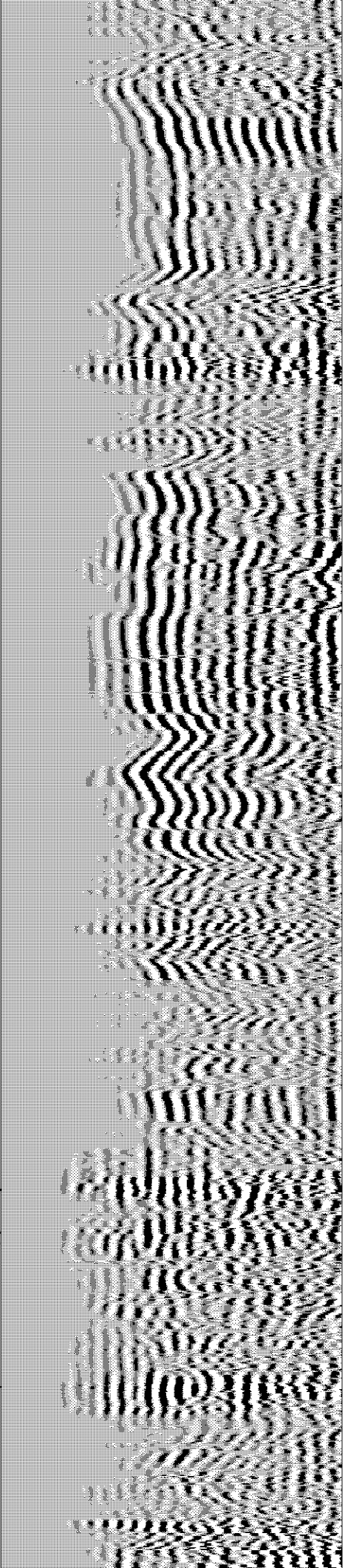
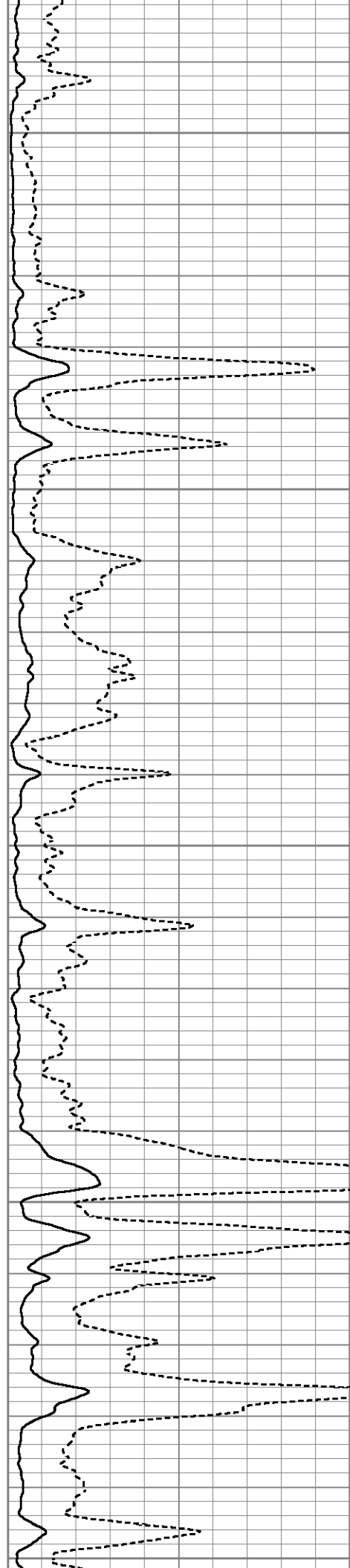
1600

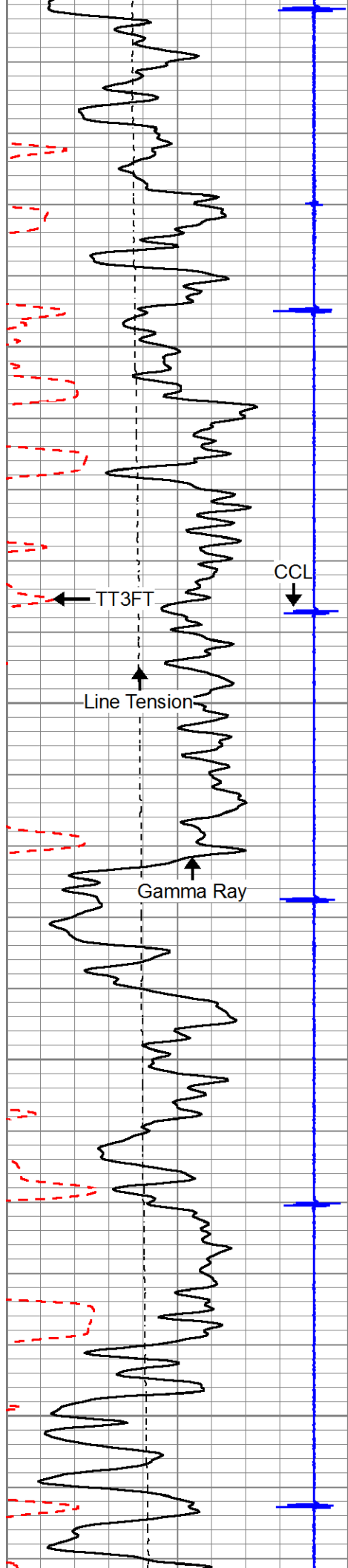
1650





1700
1750
1800
1850
1900



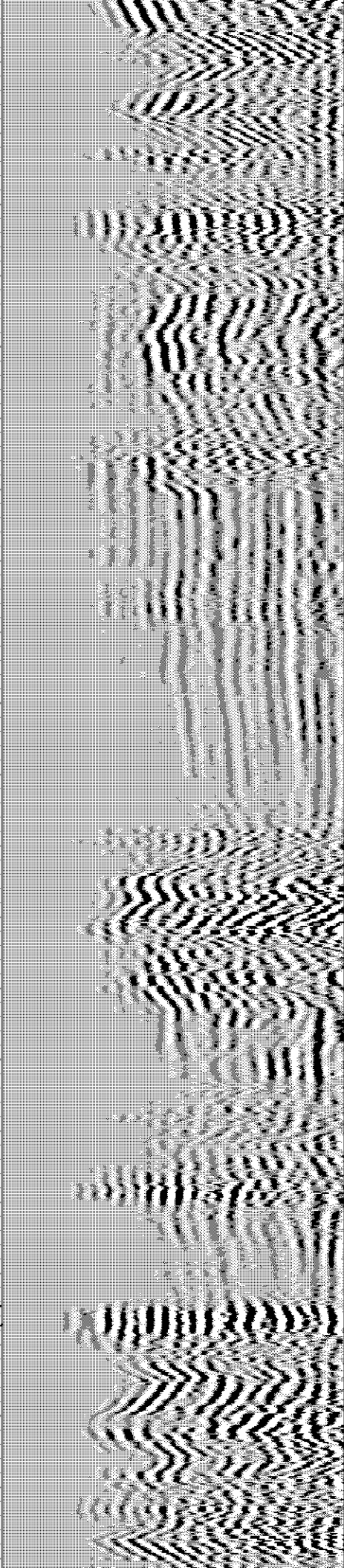
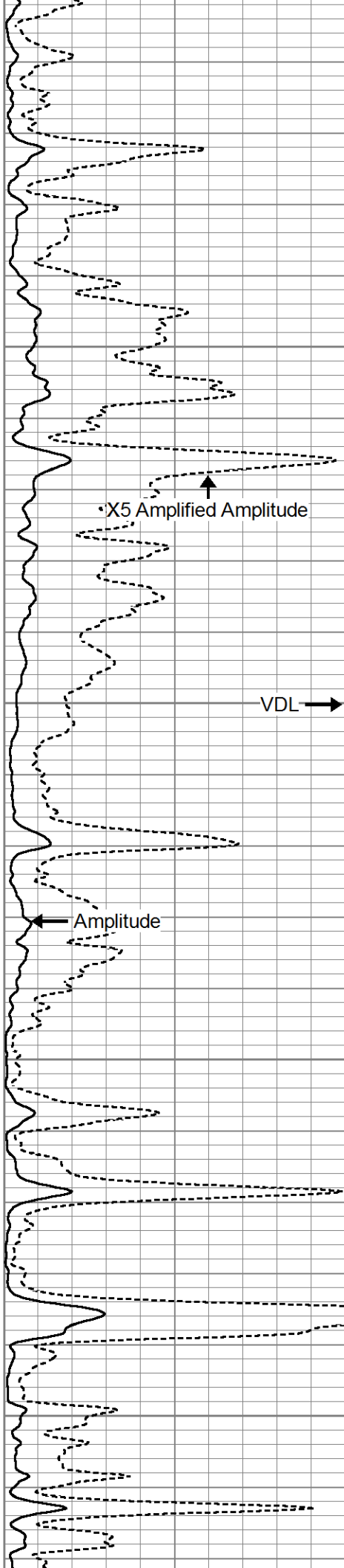


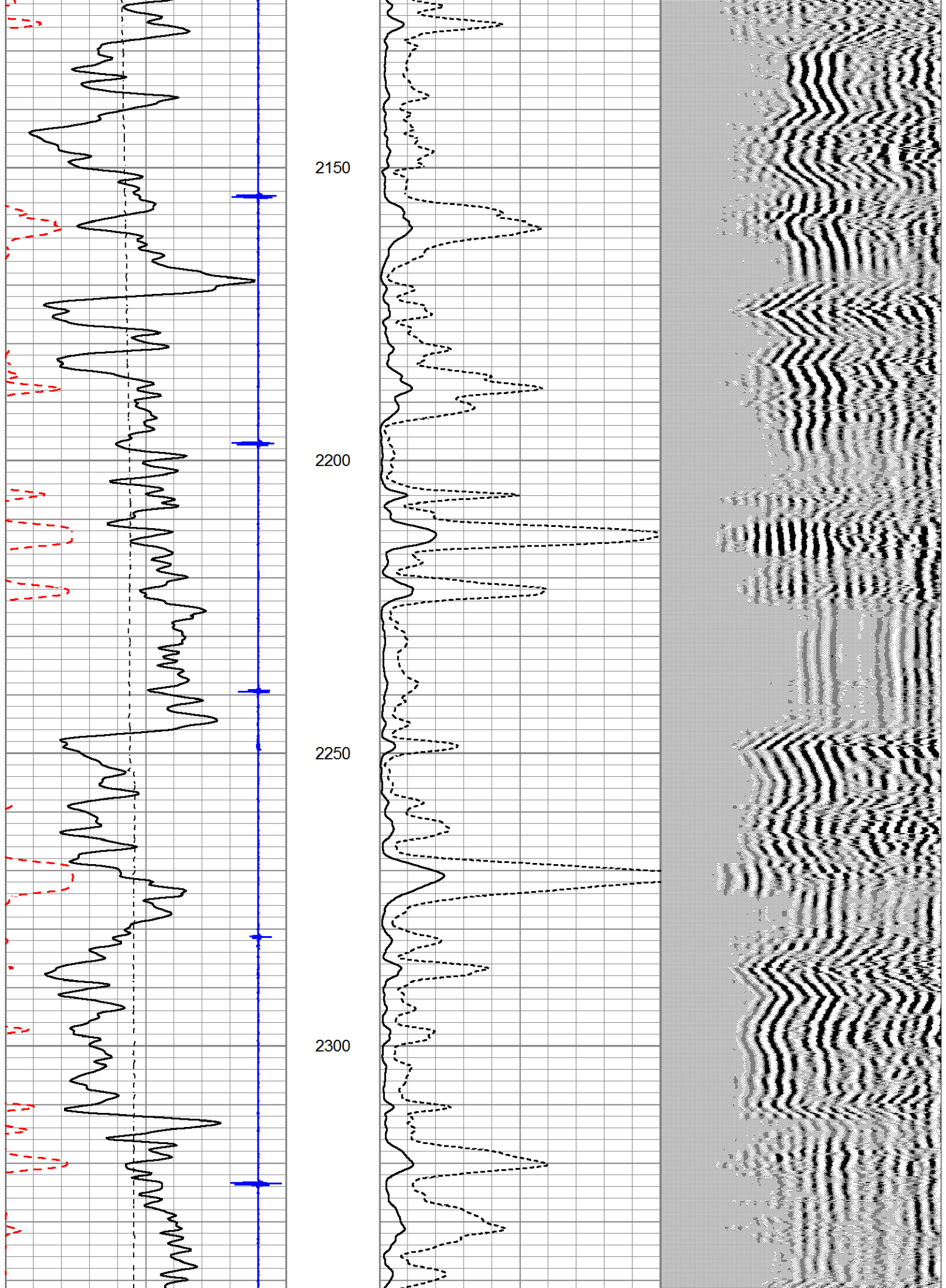
1950

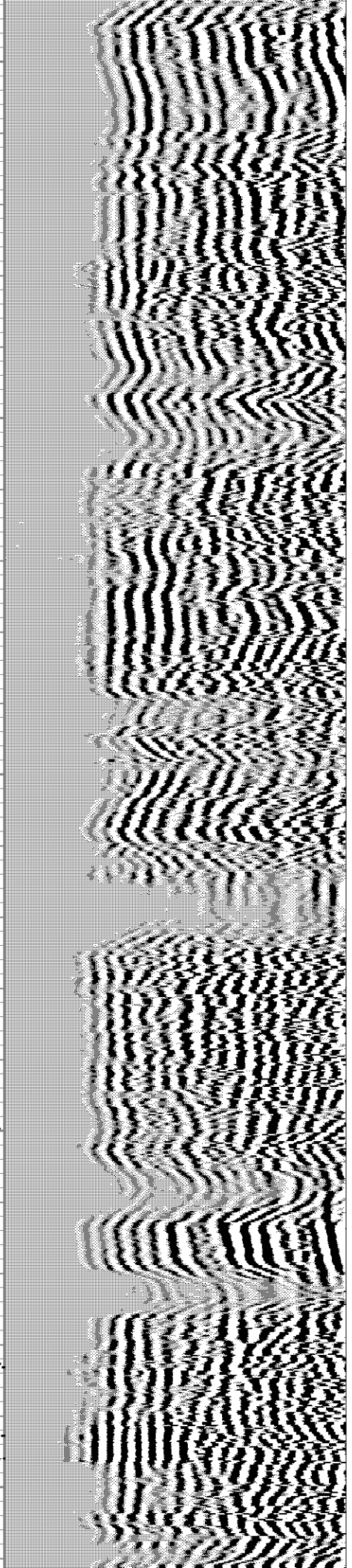
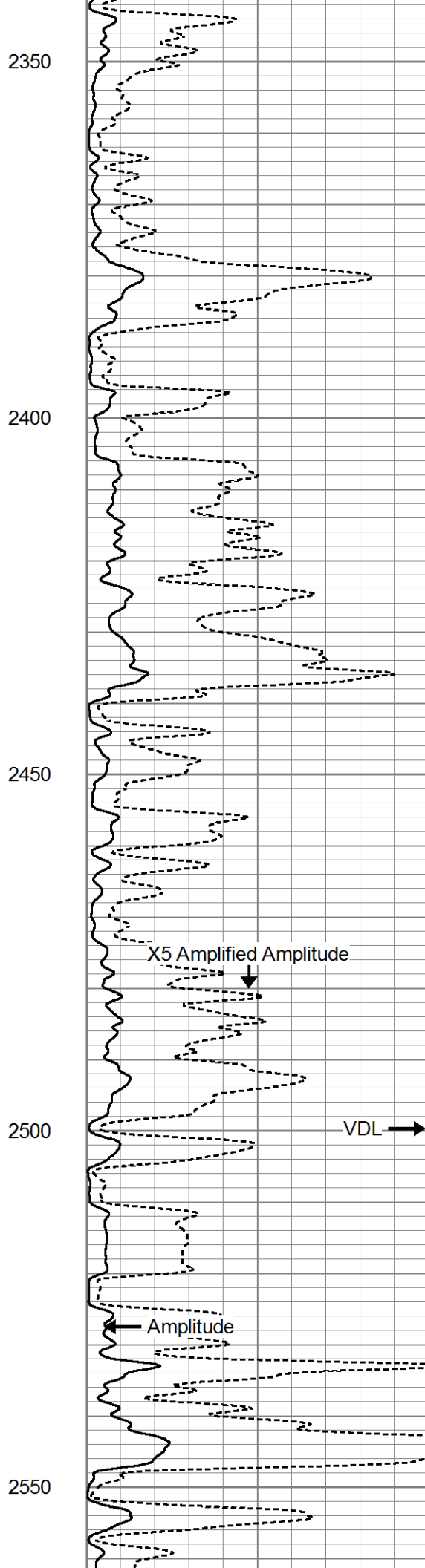
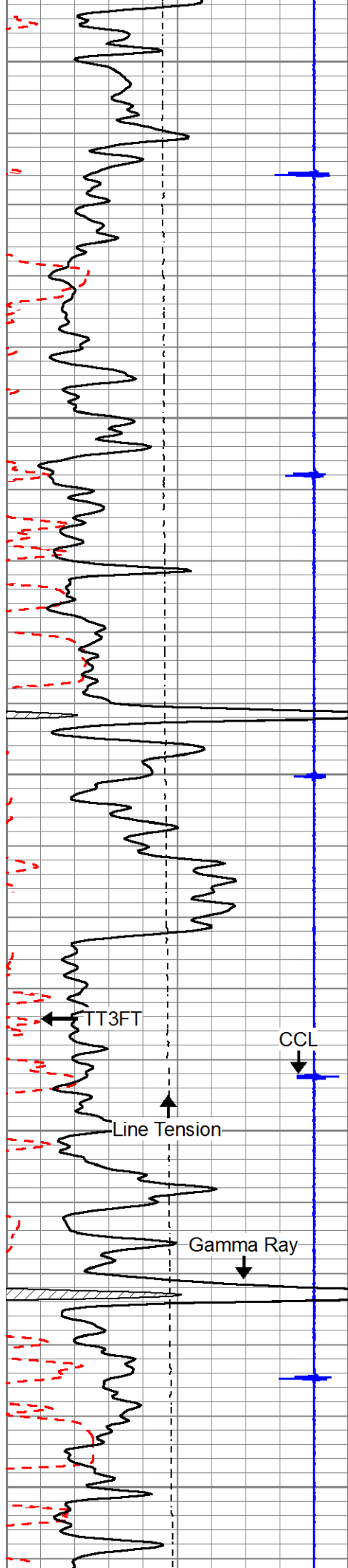
2000

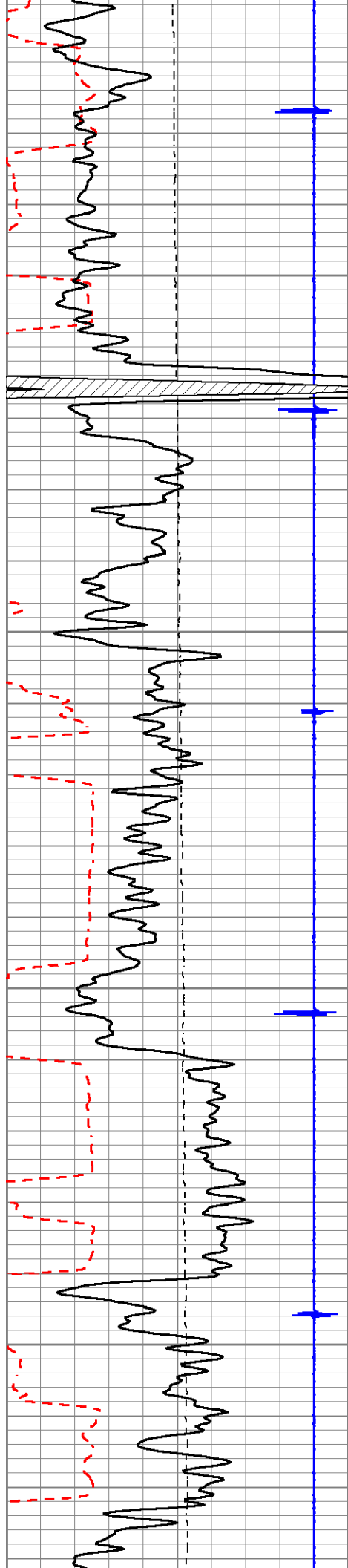
2050

2100







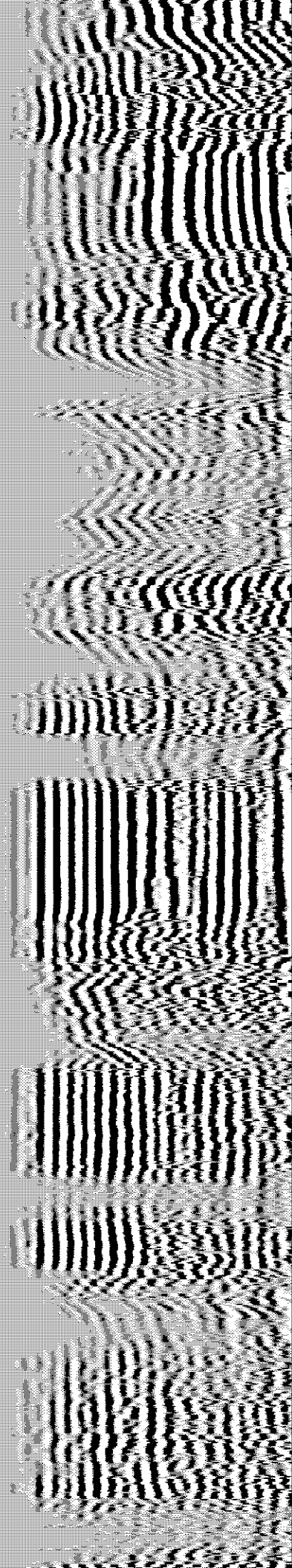
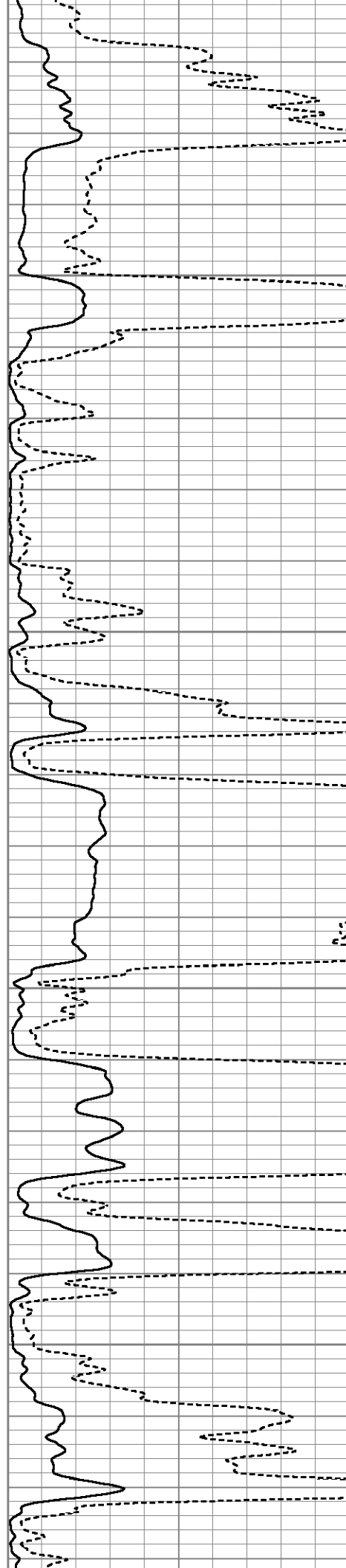


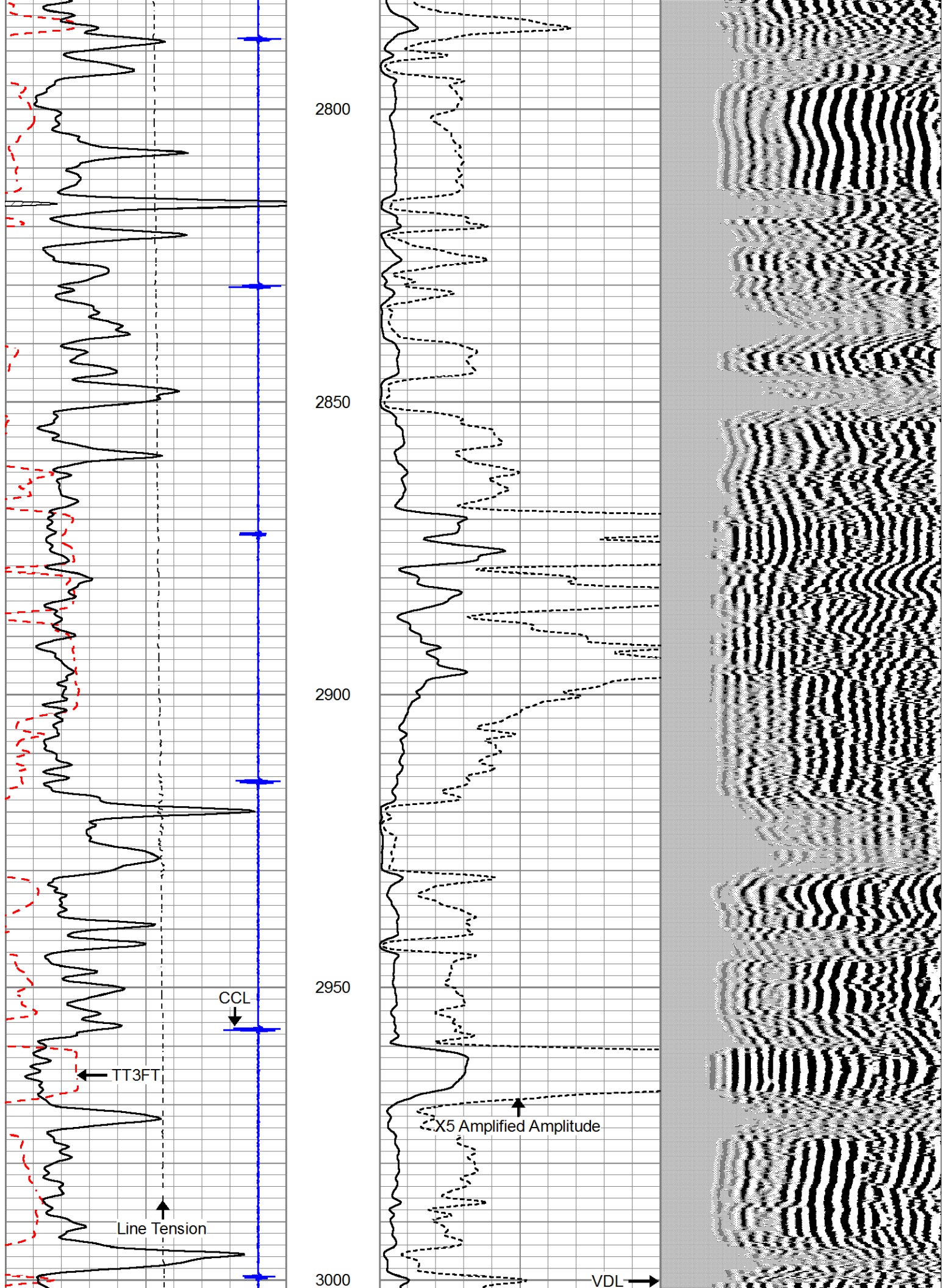
2600

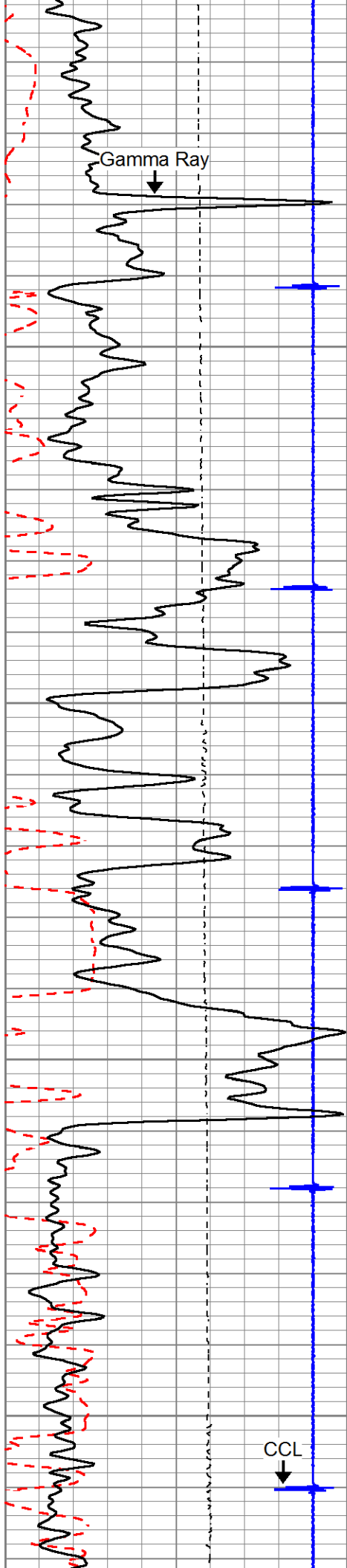
2650

2700

2750





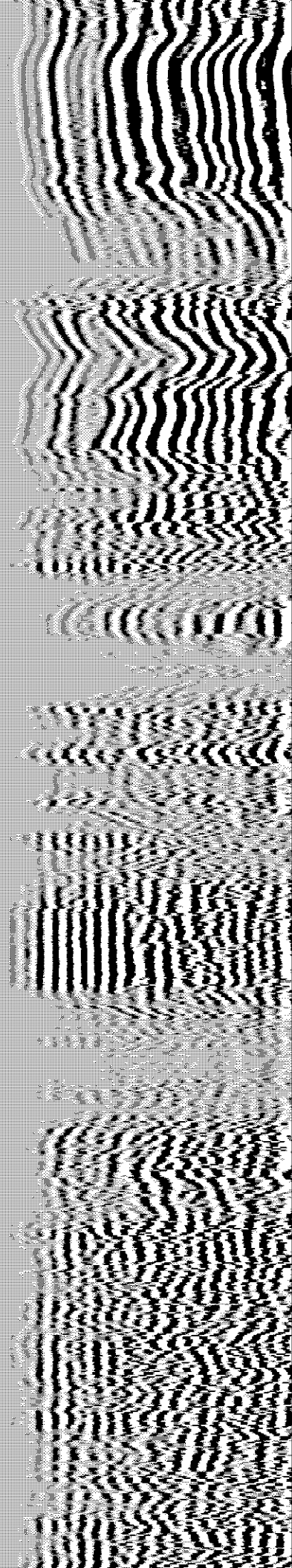
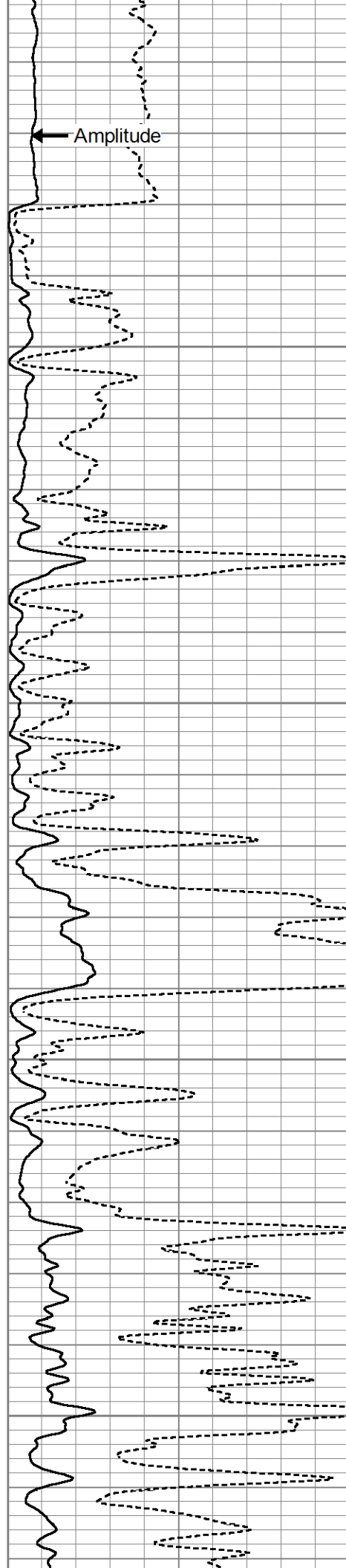


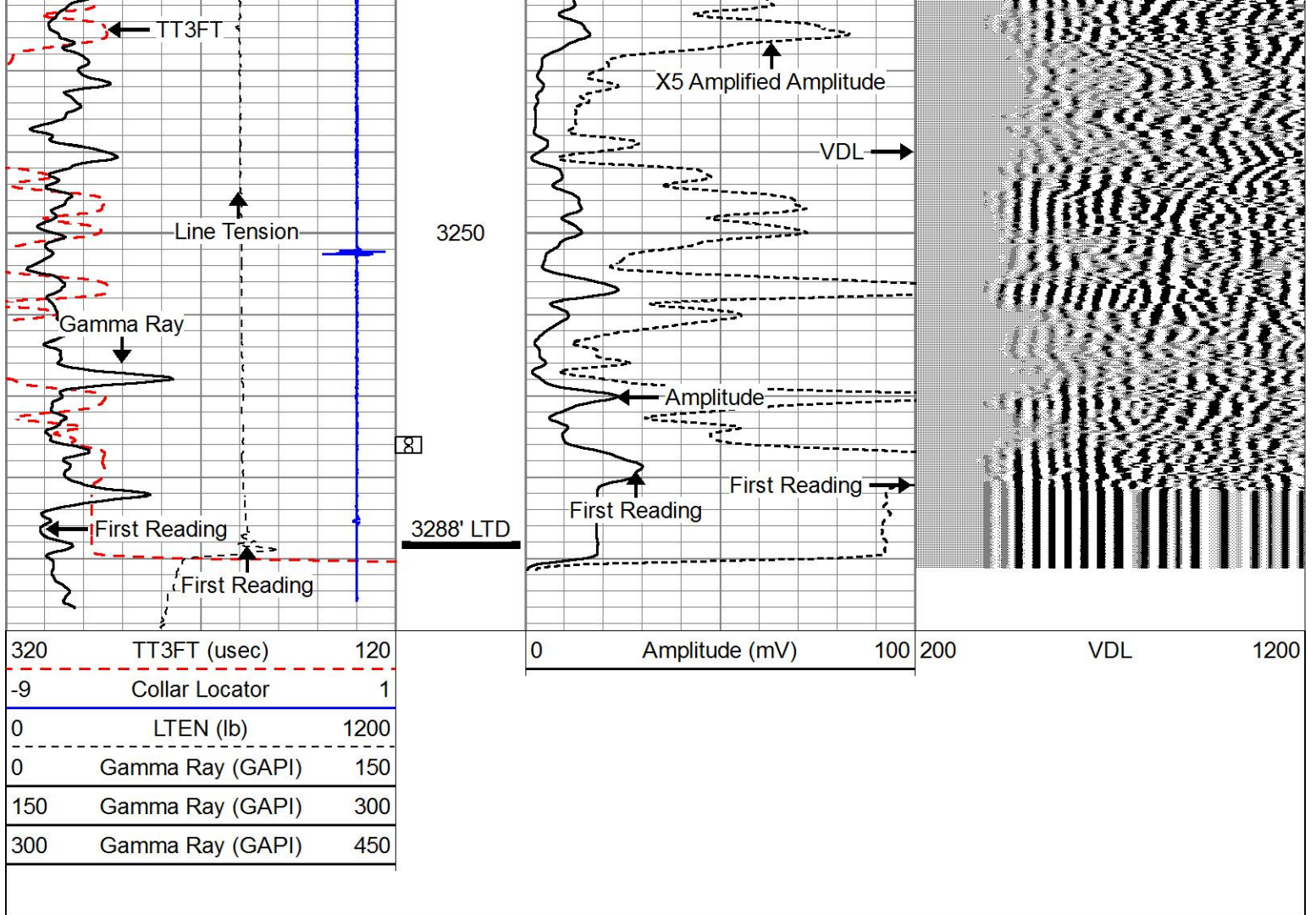
3050

3100

3150

3200

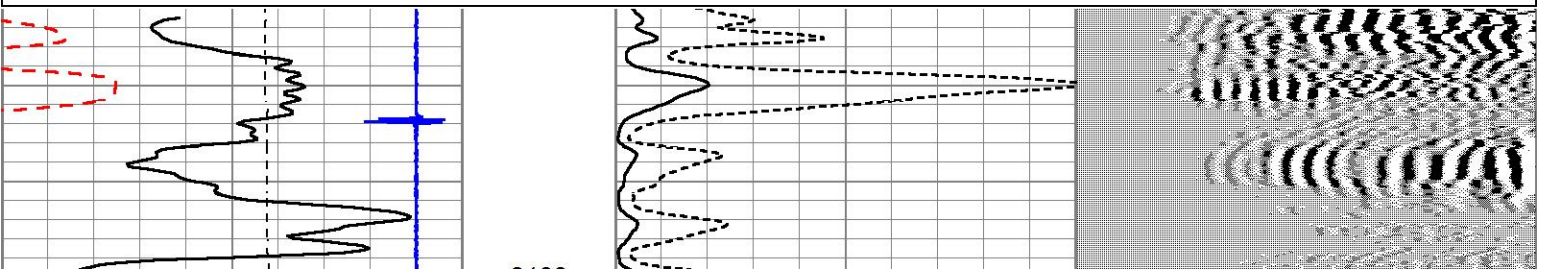
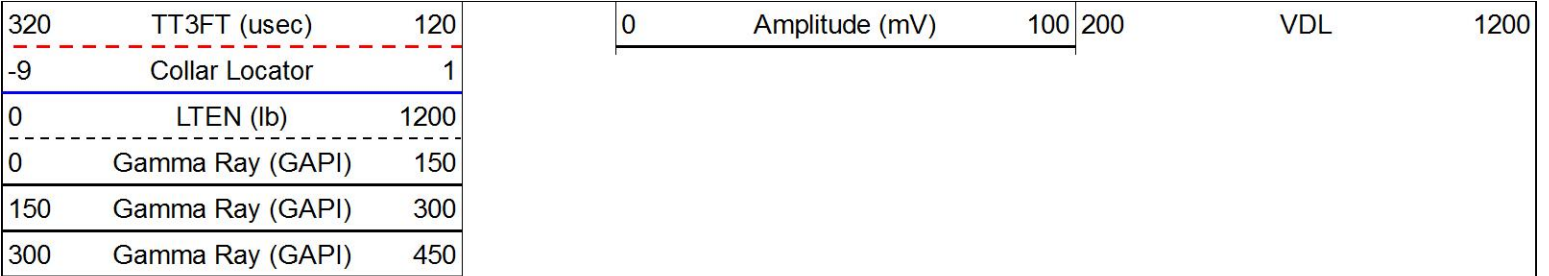


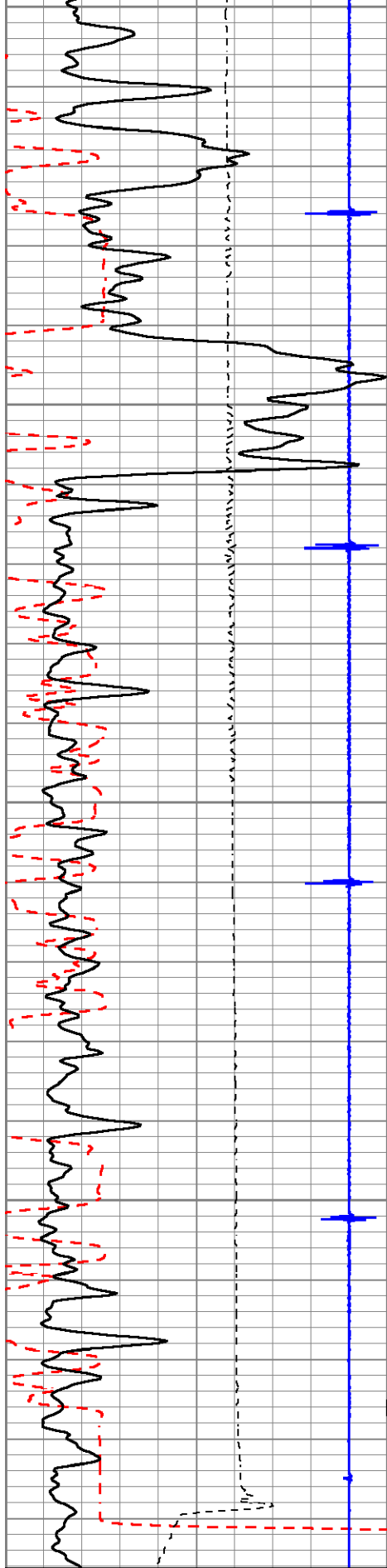


LOG-TECH
of Kansas Inc.
 GREAT BEND, KANSAS

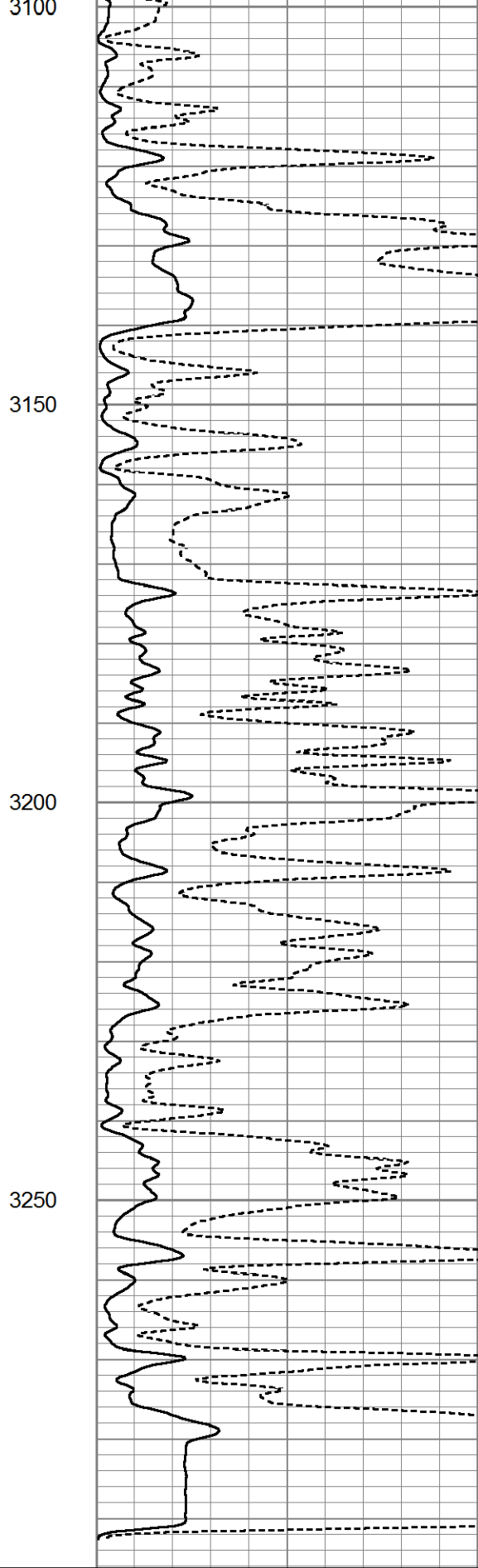
REPEAT SECTION

Database File meyers13.db
 Dataset Pathname pass1
 Presentation Format scbl_dr
 Dataset Creation Wed Jun 04 09:31:54 2014
 Charted by Depth in Feet scaled 1:240

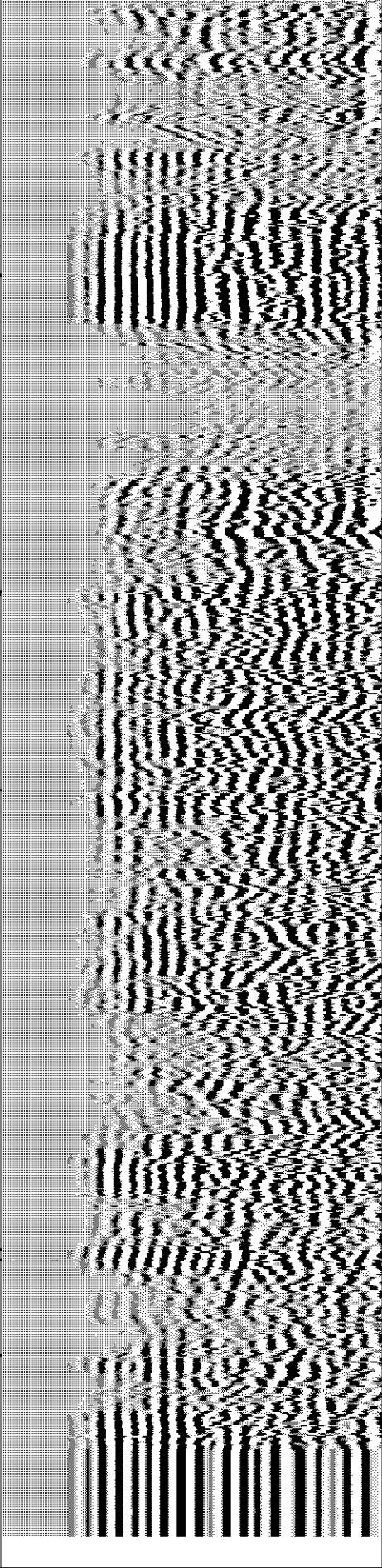




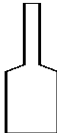
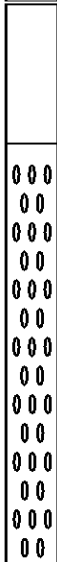




320	TT3FT (usec)	120
-9	Collar Locator	1
0	LTEN (lb)	1200
0	Gamma Ray (GAPI)	150
150	Gamma Ray (GAPI)	300



0	Amplitude (mV)	100
---	----------------	-----



200	VDL	1200
-----	-----	------

Sensor	Offset (ft)	Schematic	Description	Length (ft)	O.D. (in)	Weight (lb)
			CHD-STNDRD Standard Cable Head	1.00	1.69	10.00
WVF3FT	8.76		cbl-probecbl (probecbl1) probe cbl	8.75	2.75	92.00
WVF5FT	7.76					
WVFSYNC	4.57					
CCL	3.69		CCL-Probe (275) probe ccl	1.55	2.75	30.00
GR	0.89		GR-probegr (progr1) probe gamma ray	3.02	2.75	20.00

Dataset:	meyers13.db: field/well/run1/pass2
Total length:	14.32 ft
Total weight:	152.00 lb
O.D.:	2.75 in