

OPERATOR

Company: MIKE KELSO OIL, INC.
 Address: PO BOX 467
 CHASE, KANSAS 67524-0467

Contact Geologist: MIKE KELSO
 Contact Phone Nbr: 620-938-2943
 Well Name: MEYER ANKERHOLZ # 13
 Location: SW NW SW Sec.30-18s-7w
 Pool: INFIELD
 State: KANSAS

API: 15-159-22,783-00-00
 Field: GENESEO-EDWARDS
 Country: USA

Scale 1:240 Imperial

Well Name: MEYER ANKERHOLZ # 13
 Surface Location: SW NW SW Sec.30-18s-7w
 Bottom Location:
 API: 15-159-22,783-00-00
 License Number: 31528
 Spud Date: 5/10/2014 Time: 11:00 AM
 Region: RICE COUNTY
 Drilling Completed: 5/15/2014 Time: 5:15 AM
 Surface Coordinates: 1650' FSL & 330' FWL
 Bottom Hole Coordinates:
 Ground Elevation: 1717.00ft
 K.B. Elevation: 1724.00ft
 Logged Interval: 2400.00ft To: 3345.00ft
 Total Depth: 3345.00ft
 Formation: SIMPSON SAND
 Drilling Fluid Type: CHEMICAL/FRESH WATER GEL

SURFACE CO-ORDINATES

Well Type: Vertical
 Longitude: -98.1443069 Latitude: 38.4540513
 N/S Co-ord: 1650' FSL
 E/W Co-ord: 330' FWL

LOGGED BY

Company: SOLUTIONS CONSULTING, INC.
 Address: 108 W 35TH
 HAYS, KS 67601

Phone Nbr: (785) 639-1337
 Logged By: GEOLOGIST Name: BRUCE BASYE/HERB DEINES

CONTRACTOR

Contractor: SKYTOP DRILLING, LLC
 Rig #: 1
 Rig Type: MUD ROTARY
 Spud Date: 5/10/2014 Time: 11:00 AM
 TD Date: 5/15/2014 Time: 5:15 AM
 Rig Release: 5/16/2014 Time: 6:00 AM

ELEVATIONS

K.B. Elevation: 1724.00ft Ground Elevation: 1717.00ft
 K.B. to Ground: 7.00ft

NOTES

RECOMMENDATION TO RUN PRODUCTION CASING BASED ON FAVORABLE STRUCTURE AND POTENTIAL FOR CONVERTING TO A SWD AT A LATER DATE.

OPEN HOLE LOGGING BY PIONEER ENERGY SERVICES: DUAL COMPENSATED POROSITY LOG, DUAL INDUCTION LOG, AND MICRORESISTIVITY LOG.

NO DRILL STEM TESTS WERE RAN ON THIS WELL.

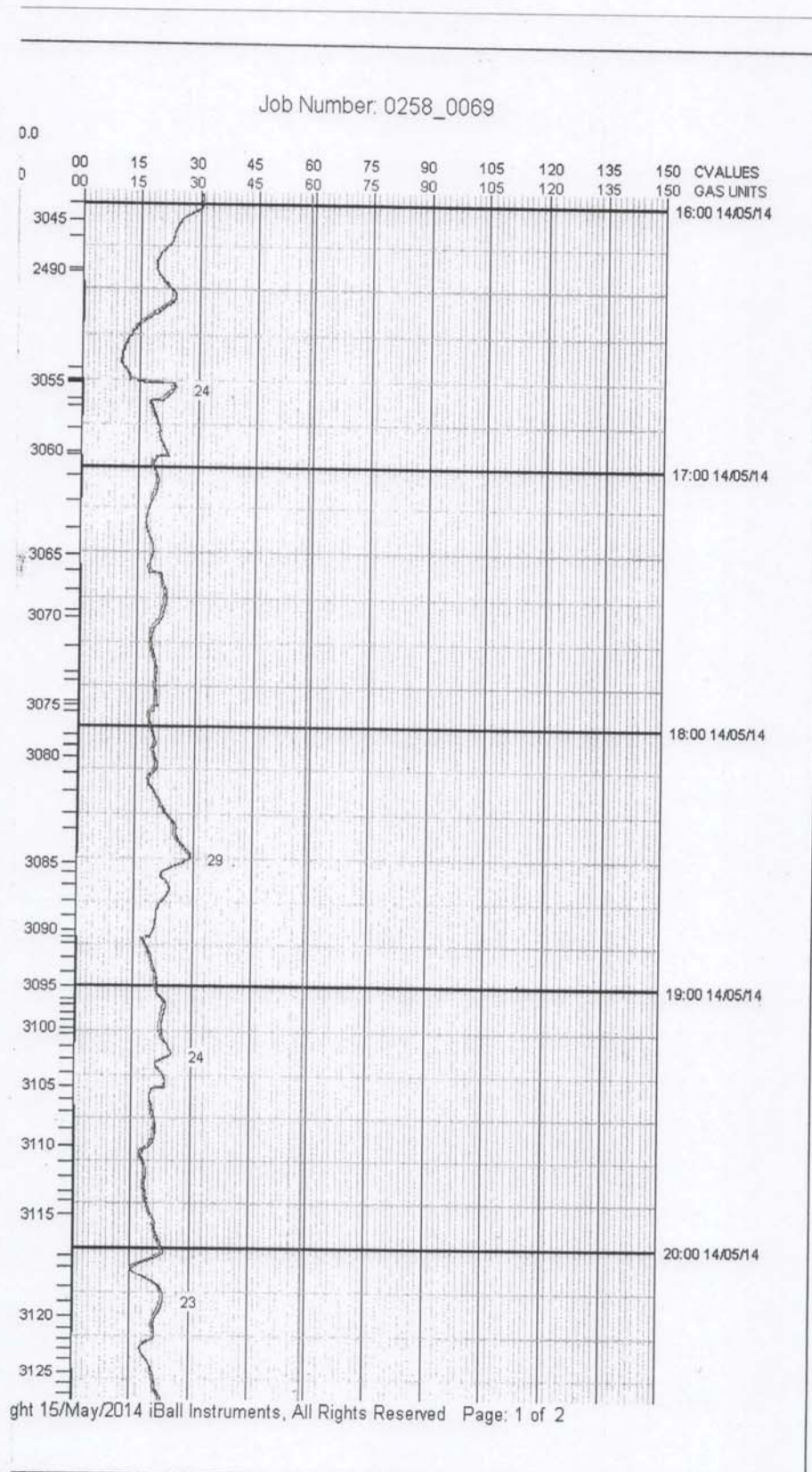
FORMATION TOPS COMPARISON AND CHRONOLOGY OF DAILY ACTIVITY

	MEYER-ANKERHOLZ 13	MEYER # 1	MEYER # 9
	SW NW SW	NW NW SW	SE NW SW
	SEC.30-18S-7W	SEC.30-18-7W	SEC.30-18-7W
	1717'GL 1724'KB	KB 1707'	KB 1725'
<u>FORMATION</u>	<u>LOG TOPS</u>	<u>LOG TOPS</u>	<u>LOG TOPS</u>
Heebner Sh.	2611- 887	- 887	- 888
Toronto	2632- 908	- 917	- 915
Douglas Sh.	2652- 928	- 929	- 926
Brown Lime	2741-1017	-1016	-1016
LKC	2776-1052	-1047	-1049
Simpson Sh.	3117-1393	-1390	-1393
Simpson Sand	3123-1399	-1397	-1408
Arbuckle	3159-1435	-1433	-1447
RTD	3345-1621	-1464	-1459

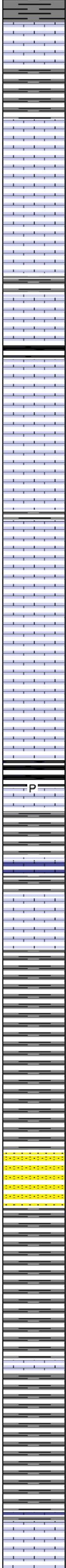
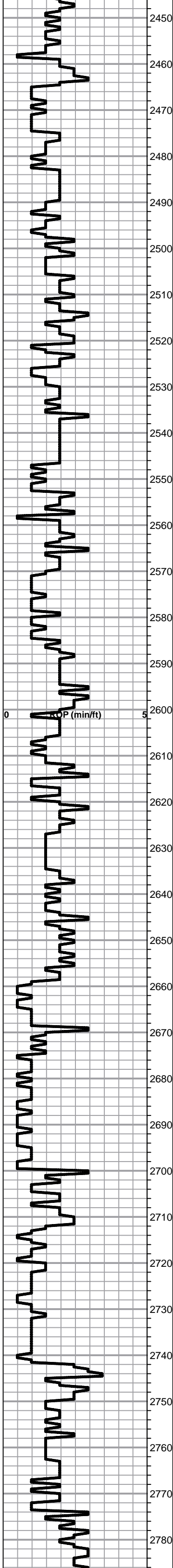
SUMMARY OF DAILY ACTIVITY

- 5-10-14 RU, Spud 11:00AM, set 8 5/8" surface casing to 370' w/ 275 sxs
Common 2%Gel 3%CC, plug down 11:00 PM
- 5-11-14 370', drill plug 9:00 AM
- 5-12-14 1945', drilling
- 5-13-14 2660', drilling, displaced 2537'
- 5-14-14 3170', drilling
- 5-15-14 3345', RTD 3345' @5:15 AM, short trip-21 stands, TOWB, logs,
TIWB, LDDP, start running production casing
- 5-16-14 3345', finish running casing and cementing, RD

GAS CHART DEPTH 3045' TO 3127'



GAS CHART 3128' TO 3345'



Lime, brn, fnxln-granular in part

Lime, crm-lt brn, fnxln

Lime, crm-lt brn, fnxln-granular

Lime, crm, fnxln, bedded chalk

Lime, crm, fnxln-granular, dark specks of fossil fragments

Lime, crm-tan, fnxln-granular, slight chalk matrix on crush

Lime, tan-lt brn, fnxln, fossiliferous

Lime, lt-med brn, fnxln

HEEBNER SHALE ELog 2611-887

Shale, black carbonaceous, fissile, blocky

Lime, lt brn, fnxln, hard on crush

TORONTO ELog 2632-908

Lime, gray grading into white-crm, fnxln, NS

Lime, white-crm, fnxln, hard on crush

DOUGLAS SHALE ELog 2652-928

Shale, lt green, soft, waxy

Shale, lt gray with fine grained, poorly sorted, gritty sandstone, NS

Shale, lt-med gray mixed with fn grained, poorly sorted, gritty sandstone

Shale and fn grained sandstone, NS

Shale and sandstone, fn grained, poorly sorted, NS

Shale, lt-med gray with green tint, soft blocky with green tint

Shale, lt gray, soft, blocky with firm, blocky in part

Shale, lt gray, soft forming soft mud clumps

BROWN LIME ELog 2741-1017

Lime, brn, fnxln, hard on crush

Shale, dark brn-gray, soft-firm blocky

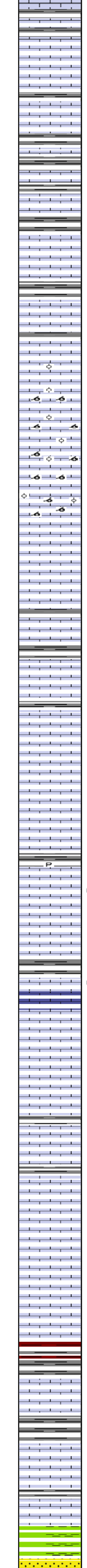
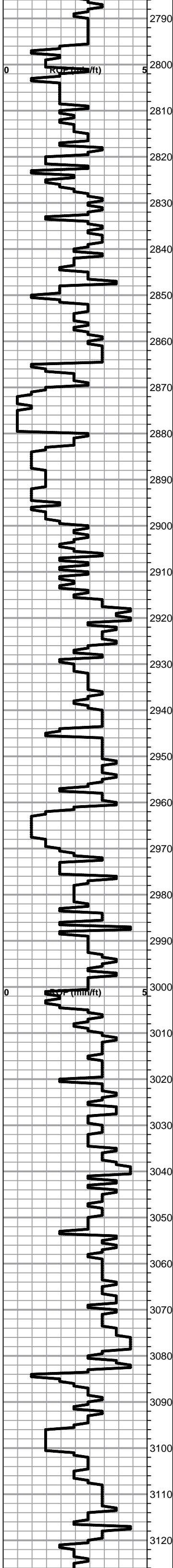
Shale, med gray, firm blocky

Shale, as above

LKC ELog 2776-1052

Lime, crm, fn-vfxln, hard on crush, NS

Total Gas ()	C1 ()	C2 ()	C3 ()	C4 ()
0	0	0	0	0
1	1	1	1	1



Lime, crm-lt brn, fn-vfxln

Lime, lt brn-lt grayish brn, fn-vfxln, hard on crush, NS

Lime, lt-med brn, fnxln with scattered micro xln

Lime, white-crm, fnxln, slightly fossiliferous

Lime, lt gray, fn-micro xln, NS

Lime, lt-med brn, fn-vfxln

Lime, lt brn, fn-micro xln, bedded chalk, NS

Lime, lt brn, fn-vfxln

Lime, lt brn, fn-vfxln, well cemented

Lime, med-dark brn, fn-micro xln

Lime, crm, fnxln-oolitic, NS

Lime, crm, granular-oomoldic with scattered fossil fragments, NS

Lime, crm, granular-oomoldic, NS

Lime, crm, granular-oomoldic, NS, chalky with white wash

Lime, tan-lt brn, fn-vfxln

Lime, tan-lt brn, fn-vfxln, slight bedded chalk

Lime, med-dark brn, fn-micro xln

Lime, lt grayish brn-lt brn, fn-vfxln, hard on crush

Lime, lt brn-lt grayish brn, fn-vfxln, hard on crush

Lime, crm-lt brn, fn-micro xln

Lime, lt brn, fn-micro xln grading into granular chalky zone, NS

Lime, lt brn-lt grayish brn, fnxln

Lime, lt brn, fn-micro xln, slightly fossiliferous

Lime, med-dark brn, fn-vfxln

Lime, Lt brn-lt grayish brn, thin zone of oolitic/fossil fragments with lt staining, trace of free oil

Lime, lt brn, fn-micro xln

Lime, lt brn, fn-micro xln, scattered fossil fragments

Lime, white-crm, fn-micro xln

Lime, white-crm, fn-micro xln, NS

Lime, crm-tan, fn-micro xln, slightly fossiliferous

Lime,

Lime, crm, fn-micro xln, hard on crush

Lime, crm-tan, fn-micro xln

Shale, gray-red, soft-firm blocky

Lime, crm-tan, fn-vfxln

Shale, red, soft, blocky

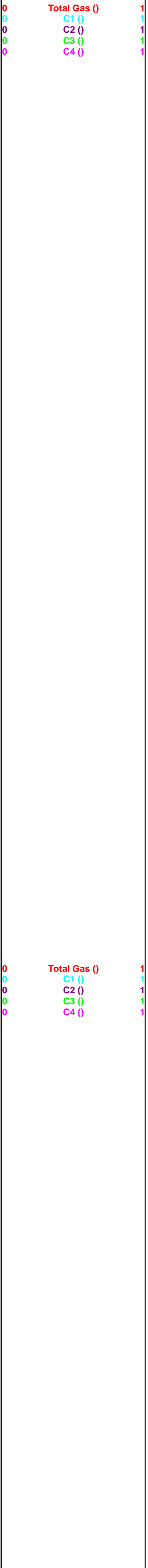
Lime crm-tan, fnxln

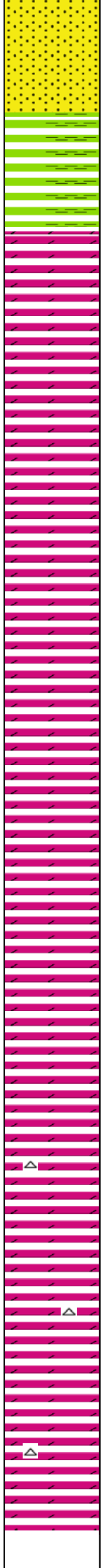
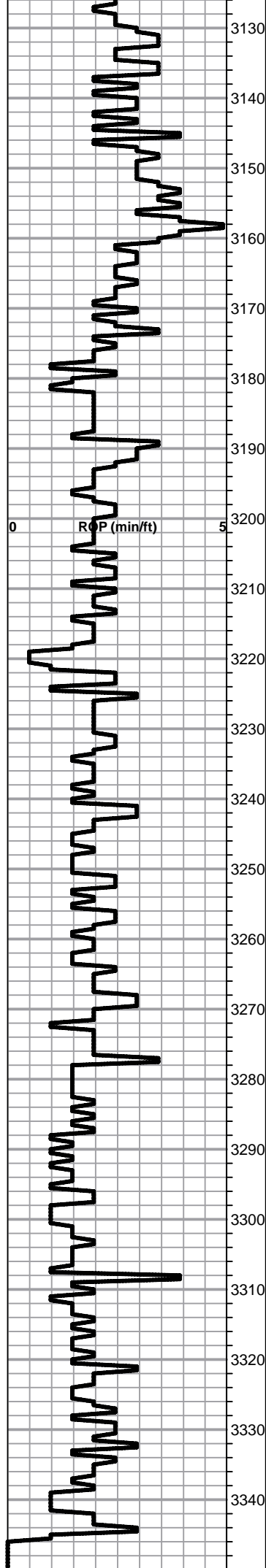
Lime, crm-tan, fn-vfxln

SIMPSON SHALE ELog 3117-1393

SIMPSON SAND ELog 3123-1399

Mudstone, green, firm, wavy, grading into sandstone, fine





Mudstone, green, firm, waxy grading into sandstone, fine-med grained, well sorted, friable with good gas response

Sandstone, as above grading into shale, green, firm, waxy

Shale and mudstone, green, firm, blocky, waxy

ARBUCKLE ELog 3159-1435

○ Dolomite, lt brn, fnxln-granular, lt staining, lt odor with lt oil sheen on samples, fine-med interxln porosity

● Dolomite, lt brn, fnxln-granular, lt stain, lt odor with lt oily sheen on samples

Dolomite, lt -med brn, fnxln-granular

Dolomite, lt-med brn, fnxln-granular, hard on crush

Dolomite, lt-med brn, fnxln-granular

Dolomite, lt-med brn, fnxln-granular

Dolomite, lt-med brn, fnxln-granular

Dolomite, lt-med brn, fnxln-granular

Dolomite, as above

Dolomite, as above

Dolomite, as above

Dolomite, as above

Dolomite, as above

Dolomite, as above with white chert

Dolomite, as above

Dolomite, as above

Dolomite, as above

Dolomite, as above

RTD 3345-1621 LTD 3345-1621

Total Gas (%)	C1 (%)	C2 (%)	C3 (%)	C4 (%)
0	0	0	0	0
1	1	1	1	1