

TRILOBITE TESTING, INC

DRILL STEM TEST REPORT

Castle Resources Inc
 Box 87
 Schoenchen, Ks 67667-0087
 ATTN: Jerry Green

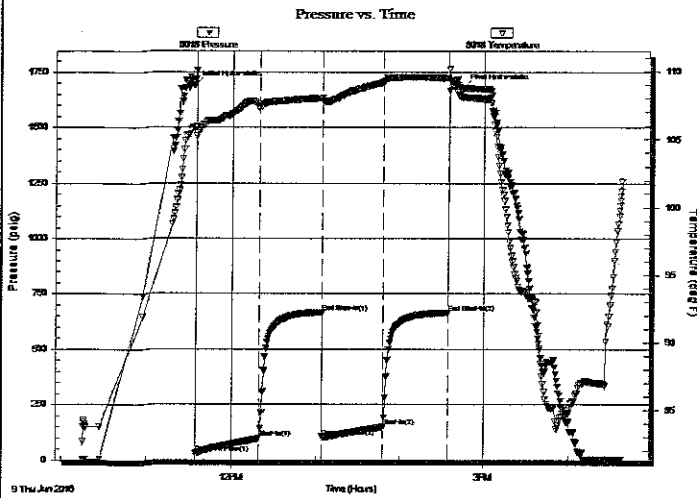
15-13s-17w Ellis
 L J Dreiling #1
 Job Ticket: 65466 DST#: 2
 Test Start: 2016.06.09 @ 10:15:14

GENERAL INFORMATION:

Formation: **Arbuckle**
 Deviated: No Whipstock: ft (KB)
 Time Tool Opened: 11:34:24
 Time Test Ended: 16:38:07
 Interval: **3484.00 ft (KB) To 3513.00 ft (KB) (TVD)**
 Total Depth: 3513.00 ft (KB) (TVD)
 Hole Diameter: 7.85 inches Hole Condition: Fair
 Test Type: Conventional Straddle (Reset)
 Tester: Ray Schwager
 Unit No: 77
 Reference Elevations: 1996.00 ft (KB)
 1991.00 ft (CF)
 KB to GR/CF: 5.00 ft

Serial #: 8018 Inside
 Press@RunDepth: 149.84 psig @ 3499.00 ft (KB) Capacity: 8000.00 psig
 Start Date: 2016.06.09 End Date: 2016.06.09 Last Calib.: 2016.06.09
 Start Time: 10:15:14 End Time: 16:38:07 Time On Btm: 2016.06.09 @ 11:32:54
 Time Off Btm: 2016.06.09 @ 14:44:38

TEST COMMENT: 45-IFP-w k to strg in 21min
 45-ISIP-surface bl bk
 45-FFP-w k to strg in 41 min
 45-FSIP-1/4"bl bk



PRESSURE SUMMARY

Time (Min.)	Pressure (psig)	Temp (deg F)	Annotation
0	1692.70	105.91	Initial Hydro-static
2	30.10	105.24	Open To Flow (1)
47	97.81	107.34	Shut-In(1)
92	665.79	108.03	End Shut-In(1)
92	105.55	107.77	Open To Flow (2)
136	149.84	109.28	Shut-In(2)
182	664.63	109.55	End Shut-In(2)
192	1677.89	108.14	Final Hydro-static

Recovery

Length (ft)	Description	Volume (bbl)
0.00	250'GIP	0.00
190.00	CO	2.67
125.00	HO&GCM 10%G35%O55%M	1.75

* Recovery from multiple tests

Gas Rates

	Choke (inches)	Pressure (psig)	Gas Rate (Mcf/d)



**TRILOBITE
TESTING, INC**

DRILL STEM TEST REPORT

FLUID SUMMARY

Castle Resources Inc
Box 87
Schoenchen, Ks 67667-0087
ATTN: Jerry Green

15-13s-17w Ellis
L J Dreiling #1
Job Ticket: 65466 DST#: 2
Test Start: 2016.06.09 @ 10:15:14

Mud and Cushion Information

Mud Type: Gel Chem	Cushion Type:	Oil API:	29 deg API
Mud Weight: 9.00 lb/gal	Cushion Length: ft	Water Salinity:	ppm
Viscosity: 45.00 sec/qt	Cushion Volume: bbl		
Water Loss: 12.16 in ³	Gas Cushion Type:		
Resistivity: ohm.m	Gas Cushion Pressure: psig		
Salinity: 18000.00 ppm			
Filter Cake: 1.00 inches			

Recovery Information

Recovery Table

Length ft	Description	Volume bbl
0.00	250'GIP	0.000
190.00	CO	2.665
125.00	HO&GCM 10%G35%O55%M	1.753

Total Length: 315.00 ft Total Volume: 4.418 bbl

Num Fluid Samples: 0 Num Gas Bombs: 0 Serial #:

Laboratory Name: Laboratory Location:

Recovery Comments:

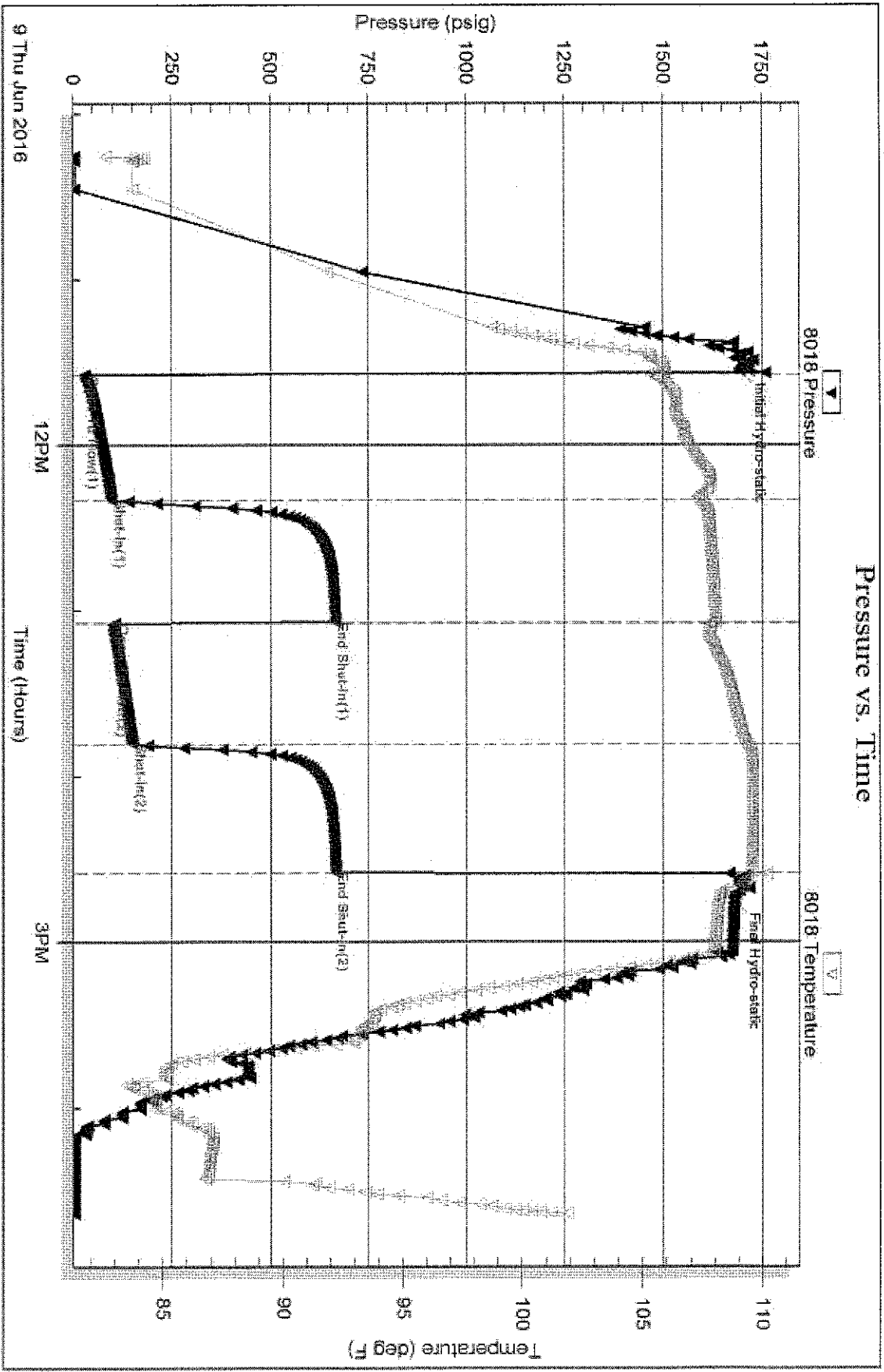
Serial #: 8018

Inside

Castle Resources Inc

LJ Drilling #1

DST Test Number: 2



Trickle Testing, Inc

Ref. No: 65466

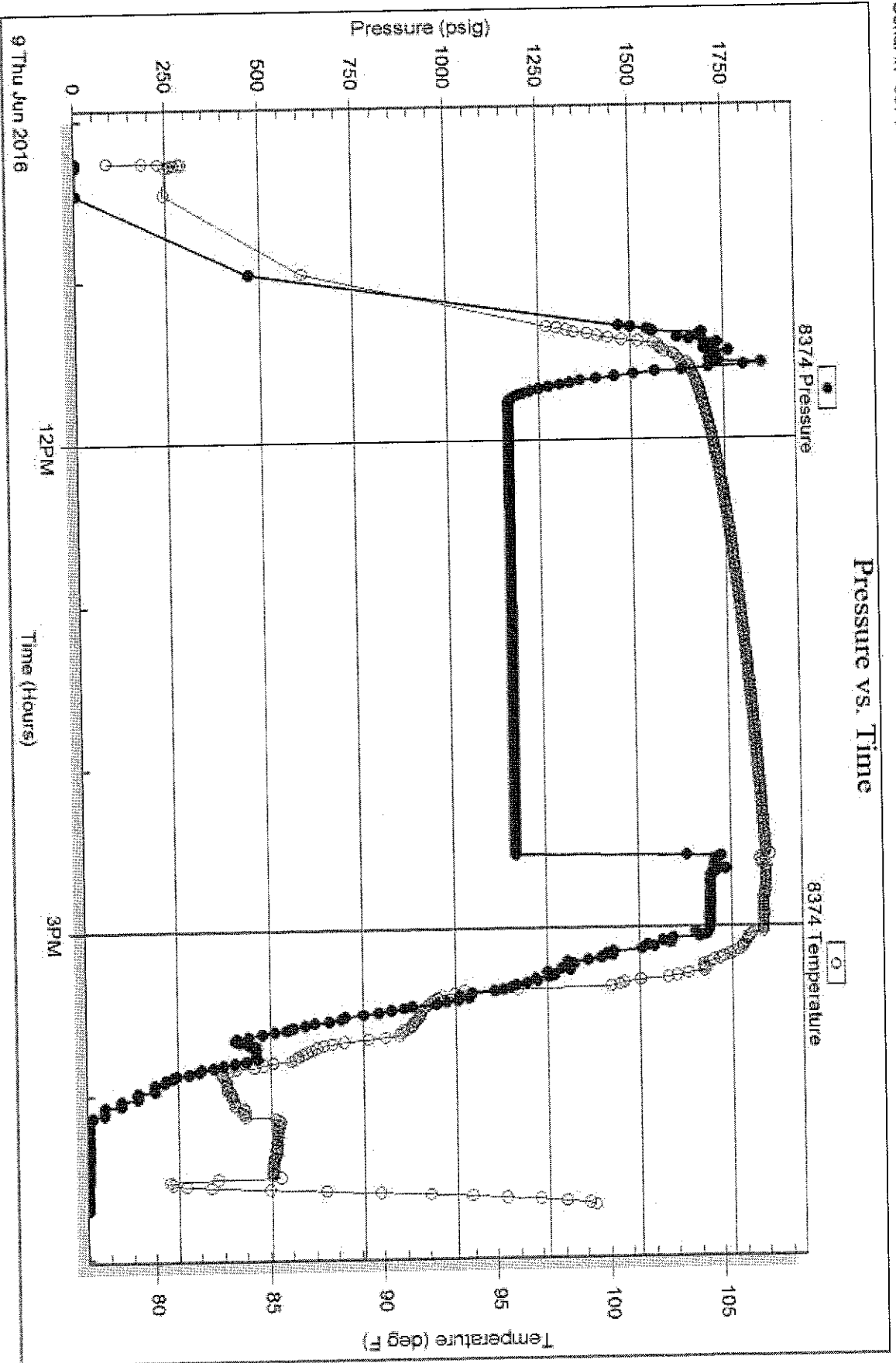
Printed: 2016.06.09 @ 18:17:12

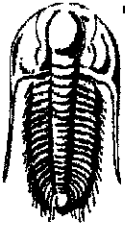
Serial #: 8374

Below (Straddling) Resources Inc

LJ Drilling #1

DST Test Number: 2





**TRILOBITE
TESTING, INC**

DRILL STEM TEST REPORT

Castle Resources Inc
Box 87
Schoenchen, Ks 67667-0087
ATTN: Jerry Green

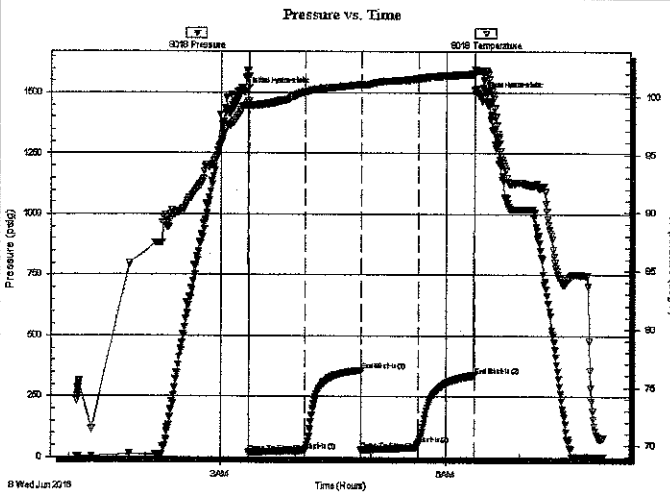
15-13s-17w Ellis
L J Drilling #1
Job Ticket: 65465 **DST#: 1**
Test Start: 2016.06.08 @ 01:05:41

GENERAL INFORMATION:

Formation: **Topeka**
Deviated: No Whipstock: ft (KB)
Time Tool Opened: 03:22:21
Time Test Ended: 08:07:35
Interval: **3153.00 ft (KB) To 3210.00 ft (KB) (TVD)**
Total Depth: 3210.00 ft (KB) (TVD)
Hole Diameter: 7.85 inches Hole Condition: Fair
Test Type: Conventional Bottom Hole (Initial)
Tester: Ray Schwager
Unit No: 77
Reference Elevations: 1996.00 ft (KB)
1991.00 ft (CF)
KB to GR/CF: 5.00 ft

Serial #: 8018 Inside
Press@RunDepth: 53.36 psig @ 3155.00 ft (KB)
Start Date: 2016.06.08 End Date: 2016.06.08
Start Time: 01:05:41 End Time: 08:07:35
Capacity: 8000.00 psig
Last Calib.: 2016.06.08
Time On Btm: 2016.06.08 @ 03:19:36
Time Off Btm: 2016.06.08 @ 06:27:50

TEST COMMENT: 45-IFP-w k bl thru-out 1/4" to 1" bl
45-ISIP-no bl
45-FFP-w k bl thru-out 1/4" to 1/2" bl
45-FSIP-no bl



PRESSURE SUMMARY

Time (Min.)	Pressure (psig)	Temp (deg F)	Annotation
0	1502.84	99.17	Initial Hydro-static
3	19.12	99.07	Open To Flow (1)
48	28.88	100.38	Shut-In(1)
93	356.29	101.04	End Shut-In(1)
93	32.15	100.88	Open To Flow (2)
138	53.36	101.53	Shut-In(2)
184	337.69	101.94	End Shut-In(2)
189	1488.43	102.23	Final Hydro-static

Recovery

Length (ft)	Description	Volume (bbl)
45.00	VM 40%W60%M w/show of oil	0.63

Gas Rates

	Choke (Inches)	Pressure (psig)	Gas Rate (Mcf/d)

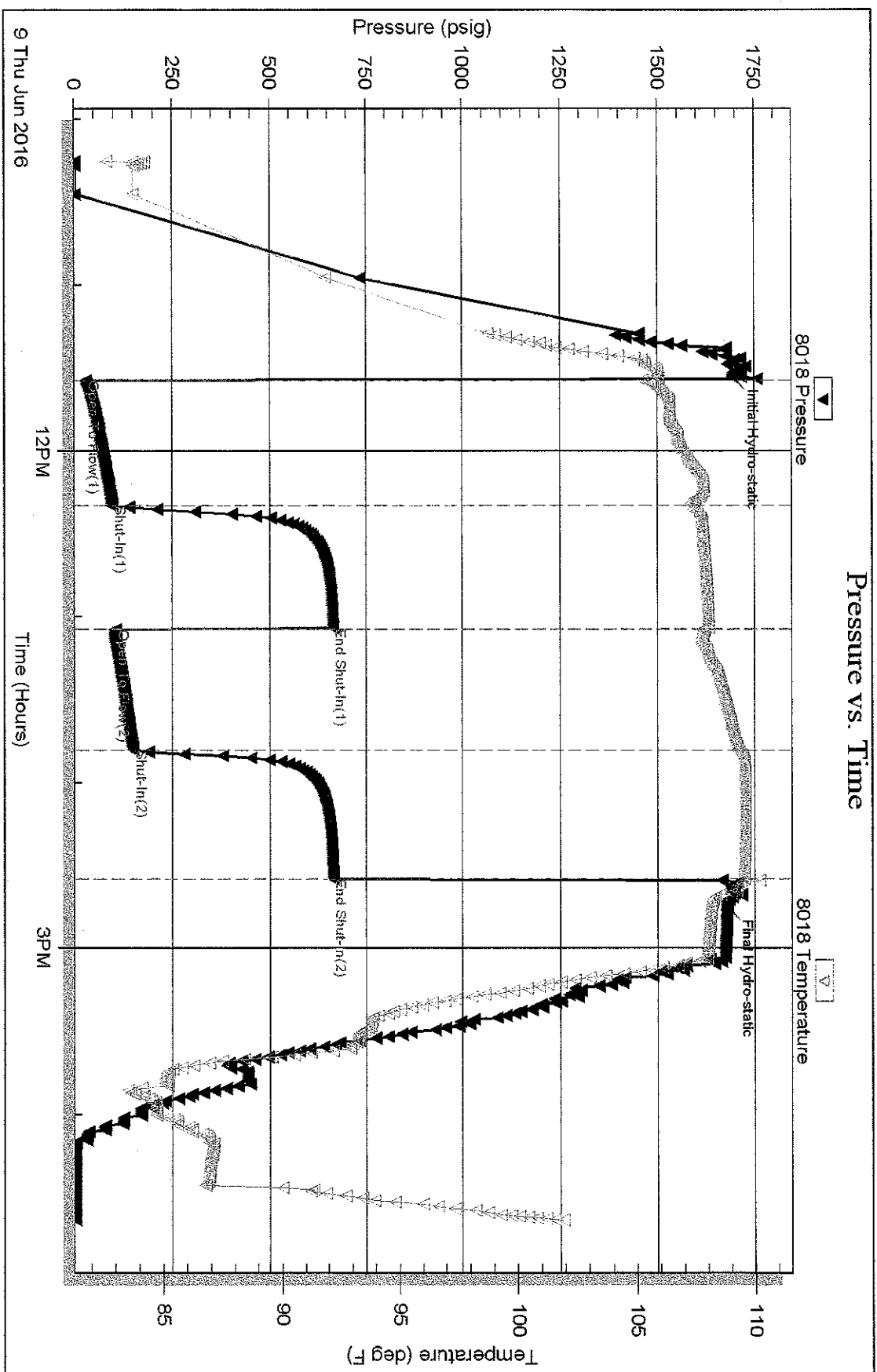
Serial #: 8018

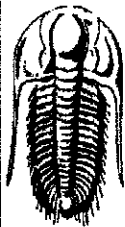
Inside

Castle Resources Inc

L J Drilling #1

DST Test Number: 2





**TRILOBITE
TESTING, INC**

DRILL STEM TEST REPORT

Castle Resources Inc
Box 87
Schoenchen, Ks 67667-0087
ATTN: Jerry Green

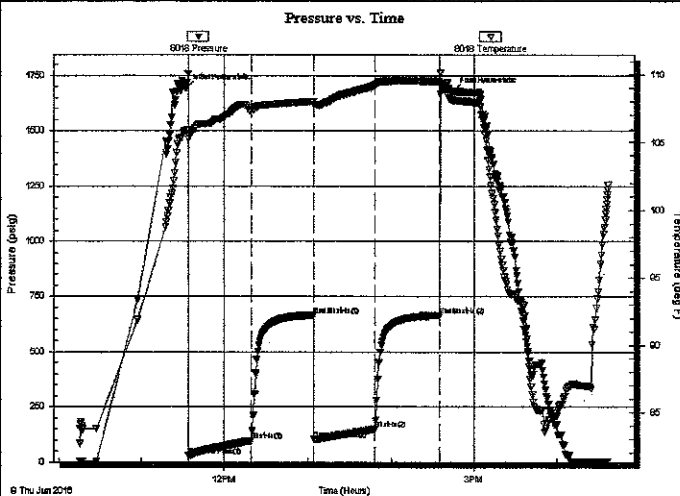
15-13s-17w Ellis
L J Dreiling #1
Job Ticket: 65466 **DST#: 2**
Test Start: 2016.06.09 @ 10:15:14

GENERAL INFORMATION:

Formation: **Arbuckle**
Deviated: **No Whipstock:** ft (KB)
Time Tool Opened: 11:34:24
Time Test Ended: 16:38:07
Test Type: **Conventional Straddle (Reset)**
Tester: **Ray Schwager**
Unit No: **77**
Interval: **3484.00 ft (KB) To 3513.00 ft (KB) (TVD)**
Total Depth: **3513.00 ft (KB) (TVD)**
Hole Diameter: **7.85 inches** Hole Condition: **Fair**
Reference Elevations: **1996.00 ft (KB)**
1991.00 ft (CF)
KB to GR/CF: **5.00 ft**

Serial #: 8018 **Inside**
Press@RunDepth: **149.84 psig @ 3499.00 ft (KB)** Capacity: **8000.00 psig**
Start Date: **2016.06.09** End Date: **2016.06.09** Last Calib.: **2016.06.09**
Start Time: **10:15:14** End Time: **16:38:07** Time On Btm: **2016.06.09 @ 11:32:54**
Time Off Btm: **2016.06.09 @ 14:44:38**

TEST COMMENT: 45-IFP-wk to strg in 21min
45-ISIP-surface bl bk
45-FFP-wk to strg in 41 min
45-FSIP-1/4"bl bk



PRESSURE SUMMARY

Time (Min.)	Pressure (psig)	Temp (deg F)	Annotation
0	1692.70	105.91	Initial Hydro-static
2	30.10	105.24	Open To Flow (1)
47	97.81	107.34	Shut-In(1)
92	665.79	108.03	End Shut-In(1)
92	105.55	107.77	Open To Flow (2)
136	149.84	109.28	Shut-In(2)
182	664.63	109.55	End Shut-In(2)
192	1677.89	108.14	Final Hydro-static

Recovery

Length (ft)	Description	Volume (bbl)
0.00	250'GIP	0.00
190.00	CO	2.67
125.00	HO&GCM 10%G35%O55%M	1.75

* Recovery from multiple tests

Gas Rates

Choke (inches)	Pressure (psig)	Gas Rate (Mcf/d)



**TRILOBITE
TESTING, INC**

DRILL STEM TEST REPORT

Castle Resources Inc
 Box 87
 Schoenchen, Ks 67667-0087
 ATTN: Jerry Green

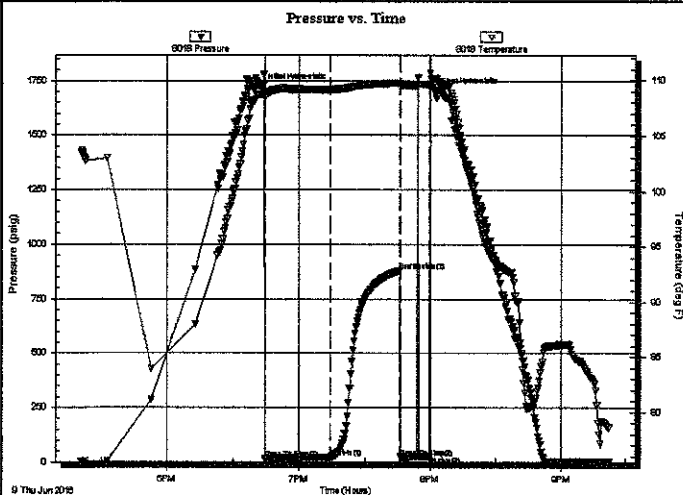
15-13s-17w Ellis
L J Drilling #1
 Job Ticket: 65467 **DST#: 3**
 Test Start: 2016.06.09 @ 17:20:39

GENERAL INFORMATION:

Formation: **Arbuckle 4th brake**
 Deviated: No Whipstock: ft (KB)
 Time Tool Opened: 18:44:49
 Time Test Ended: 21:22:34
 Interval: **3550.00 ft (KB) To 3558.00 ft (KB) (TVD)**
 Total Depth: 3600.00 ft (KB) (TVD)
 Hole Diameter: 7.85 inches Hole Condition: Fair
 Test Type: Conventional Straddle (Reset)
 Tester: Ray Schwager
 Unit No: 77
 Reference Elevations: 1996.00 ft (KB)
 1991.00 ft (CF)
 KB to GR/CF: 5.00 ft

Serial #: 8018 Inside
 Press@RunDepth: 21.77 psig @ 3551.00 ft (KB) Capacity: 8000.00 psig
 Start Date: 2016.06.09 End Date: 2016.06.09 Last Calib.: 2016.06.09
 Start Time: 17:20:39 End Time: 21:22:34 Time On Btm: 2016.06.09 @ 18:42:49
 Time Off Btm: 2016.06.09 @ 20:02:04

TEST COMMENT: 30-IFP-vy w k surface bl thru-out
 30-ISIP-no bl
 10-FFP-no bl , flushed tool , got surge



PRESSURE SUMMARY

Time (Min.)	Pressure (psig)	Temp (deg F)	Annotation
0	1719.03	108.74	Initial Hydro-static
2	16.48	108.51	Open To Flow (1)
32	21.77	109.18	Shut-In(1)
63	881.61	109.78	End Shut-In(1)
64	23.18	109.56	Open To Flow (2)
77	26.27	109.65	Shut-In(2)
80	1700.80	110.14	Final Hydro-static

Recovery

Length (ft)	Description	Volume (bbl)
30.00	SOCWM 2%O40%W58%M	0.42

* Recovery from multiple tests

Gas Rates

Choke (inches)	Pressure (psig)	Gas Rate (Mcf/d)

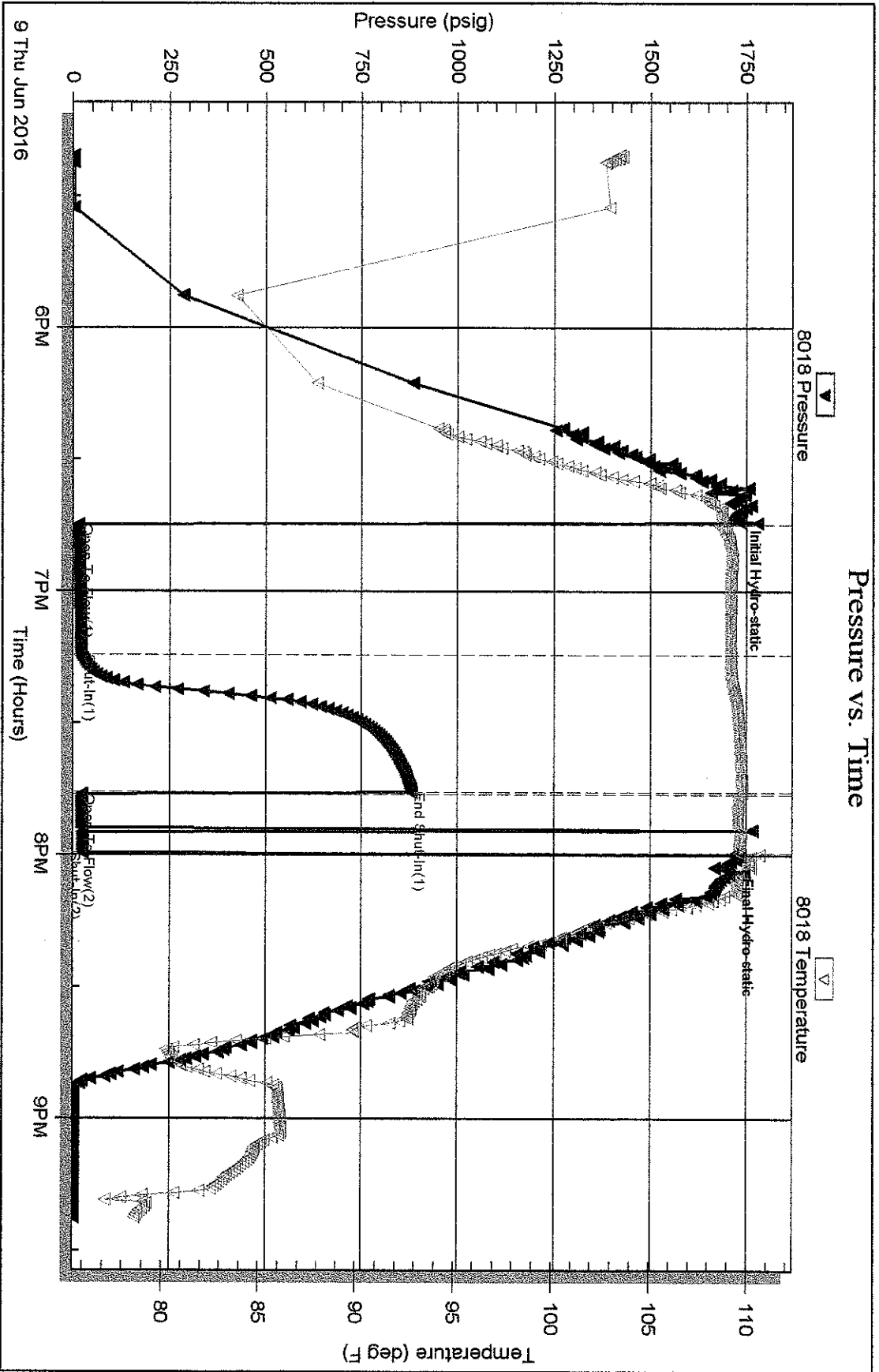
Serial #: 8018

Inside

Castle Resources Inc

L J Drilling #1

DST Test Number: 3



Trilobite Testing, Inc

Ref. No: 65467

Printed: 2016.06.09 @ 21:37:30