

# AUSTIN B. KLAUS



**Cell 785.650.3629**  
**Work 785.483.3145**  
**Ext 225**

**PO BOX 352**  
**Russell, KS 67665**  
**austin.klaus@johnofarmer.com**

**Scale 1:240 (5"=100') Imperial**  
**Measured Depth Log**

**Well Name:** Camp Unit #1  
**Location:** Russell County  
**License Number:** API #15-167-23,890-0000  
**Spud Date:** 4/17/14  
**Surface Coordinates:** Section 35, Township 14 South, Range 14 West  
330' FSL & 265' FWL  
**Bottom Hole Coordinates:** Vertical well with minimal deviation, same as above  
**Ground Elevation (ft):** 1,744'      **K.B. Elevation (ft):** 1,752'  
**Logged Interval (ft):** 2,500'      **To:** 3,268'      **Total Depth (ft):** 3,270'  
**Formation:** Lansing, Arbuckle  
**Type of Drilling Fluid:** Chemical (Andy's)

**Region:** Kansas  
**Drilling Completed:** 4/24/14

Printed by STRIP.LOG from WellSight Systems 1-800-447-1534 [www.WellSight.com](http://www.WellSight.com)

## OPERATOR

**Company:** John O. Farmer, Inc.  
**Address:** P.O. Box 352  
Russell, KS 67665-0352

## Comments

The Camp Unit #1 well was drilled by Discovery Drilling Rig #2 (Tool Pusher: Terry Wickham).

The location for the Camp Unit #1 well was found via 3-D seismic survey. Geologic samples were collected and evaluated from 2,350'-3,400'. Structurally, the Camp Unit #1 ran 10' high to our correlation well at the Lansing. Four bottom-hole tests were conducted in the Lansing, the last of which yielded positive results (H-L test). The Arbuckle horizon was 9' high to the nearest Arbuckle well, 1,500' southeast of our location. Upon completion of the logging operation, a straddle tested was conducted, covering the top 15' of the Arbuckle. After all sample, log, and drill stem test data was gathered and evaluated, the decision was made to run 5 1/2" production casing on 4/25/14 to further evaluate the Camp Unit #1 well.

**ROCK TYPES**

Anhy  
 Bent  
 Brec  
 Cht

Clyst  
 Coal  
 Congl  
 Dol

Gyp  
 Igne  
 Lmst  
 Meta

Mrlst  
 Salt  
 Shale  
 Shcol

Shgy  
 Sltst  
 Ss  
 Till

**OTHER SYMBOLS**

**POROSITY**  
 Earthy  
 Fenest  
 Fracture  
 Inter  
 Moldic  
 Organic  
 Pinpoint

Vuggy  
**SORTING**  
 Well  
 Moderate  
 Poor

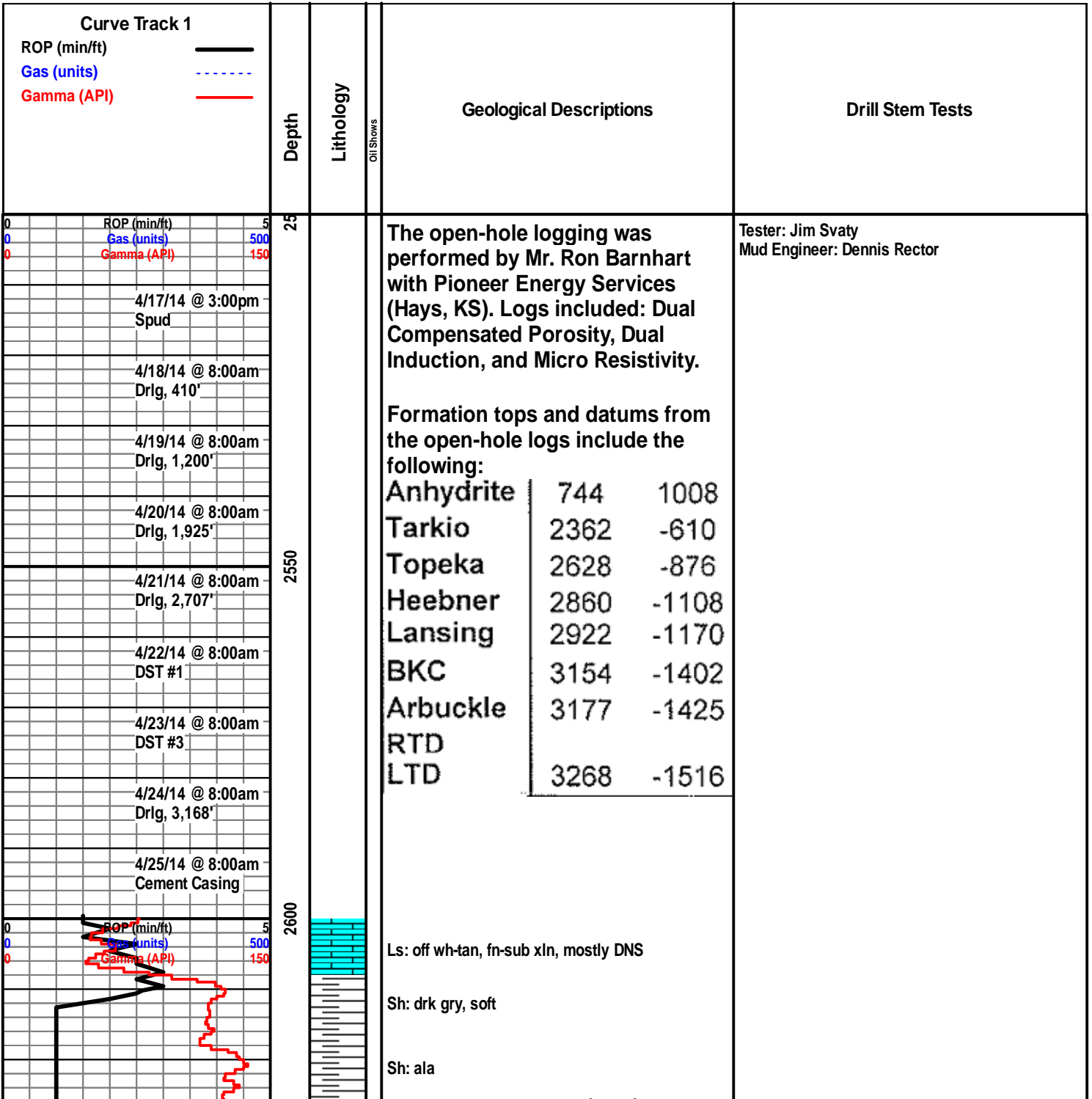
**ROUNDING**  
 Rounded  
 Subrnd  
 Subang  
 Angular

Spotted  
 Ques  
 Dead

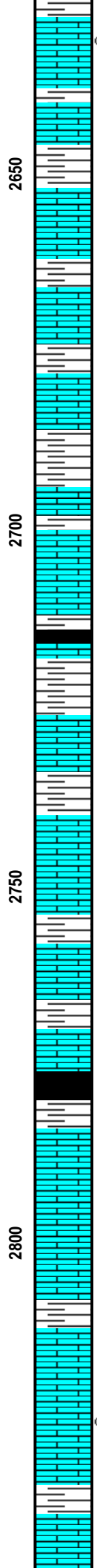
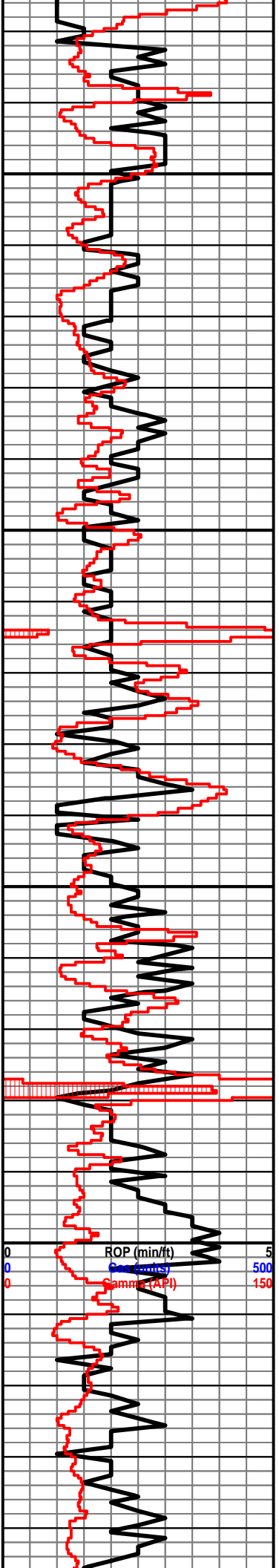
**EVENT**  
 Rft  
 Sidewall

**INTERVAL**  
 Core  
 Dst

**OIL SHOW**  
 Even



**Topeka 2629' (-877)**

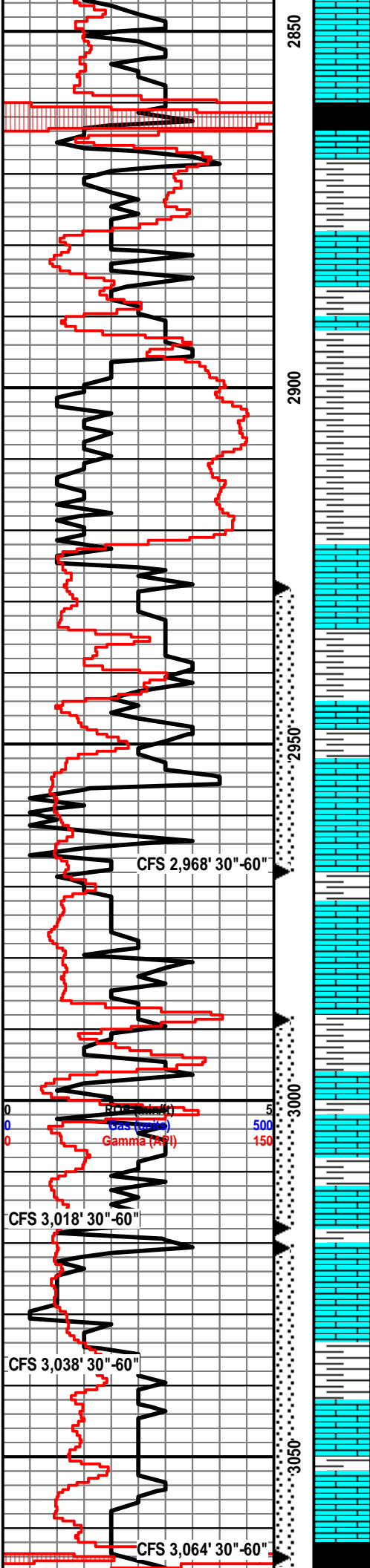


- Ls: tan-lt gry, vry fn xln, poor pp vuggy porosity, lt-fair oil st, sl odor, VSSFO, scat pyrite
- Ls: tan-gry, fn-sub xln, mostly DNS, scat int xln porosity, sl oil st, NSFO, scat chert-off wh
- Ls: tan-gry, fn-sub xln, mostly DNS, scat sh: drk gry
- Sh: drk gry-brn, soft
- Sh: drk gry-grn, vry soft
- Ls: tan-gry, fn xln, scat pp vuggy porosity, NSFO, fossil, scat pyrite
- Sh: drk gry, soft
- Ls: tan-gry, fn-sub xln, mostly DNS, scat pyrite, fossil
- Ls: ala
- Sh: drk gry-blk
- Sh: gry-brn-grn, soft
- Ls: tan-lt gry, fn xln, scat int xln porosity, sl oil st, NSFO, scat sltst: gry, vry fn grn
- Sh: drk gry
- Ss: tan-gry, vry fn grn, rnd-sub rnd, poor int grn porosity, fairly well cemented, NSFO, scat fossil
- Ls: tan-gry, fn-sub xln, mostly DNS, scat chalk, fossil
- Sh: drk gry-grn, soft
- Ls: tan-gry, fn xln, fossil, scat int xln porosity, NSFO, chalky
- Sh: drk gry, scat blk
- Ls: off wh-tan, fn xln, scat pp vuggy porosity, sl oil st, VSSFO, sl odor, fossil, scat chert
- Ls: tan-lt gry, fn-sub xln, mostly DNS, hvy fossil
- Sh: drk gry
- Ls: off wh-tan, fn xln, scat-poor pp vuggy porosity, sl-fair oil st, SSFO, sl odor, fossil, chert-off wh
- Sh: drk gry
- Ls: tan-gry, fn-sub xln, mostly DNS, sl fossil,

Wt: 8.7  
Vis: 49

ROP (min/ft) 5  
Gas (mmscf) 500  
Gamma (API) 150

2800  
2750  
2700  
2650



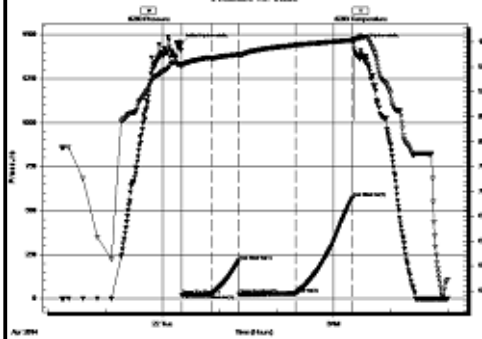
NSFO  
 Ls: ala

**Heebner 2864' (-1112)**  
 Sh: drk gry-blk, carb, fissile  
 Ls: tan-lt gry, fn-sub xln, mostly DNS  
 Sh: drk gry

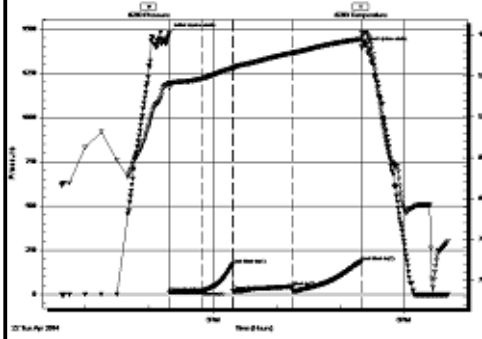
**Toronto 2883' (-1131)**  
 Ls: tan-gry-brn, fn xln, mostly DNS, scat pp vuggy porosity, NSFO, no odor, sl fossil, scat sh: gry-grn, soft  
 Sh: lt gry-grn, vry soft, scat sltst: grn, vry fn grn  
 Sh: drk gry-blk, soft  
 Sh: drk gry-brn-rd

**Lansing 2926' (-1174)**  
 Ls: off wh-tan, fn xln, fossil, poor pp vuggy porosity, fair oil sat, SSFO, sl-fair odor, sl chert-off wh  
 Sh: drk gry  
 Ls: off wh-tan-lt gry, fn-sub xln, mostly DNS, NSFO, fossil  
 Ls: off wh-tan, fn xln, ool, good oom porosity, fair-good oil sat, SSFO, good odor, sl fossil  
 Sh: drk gry  
 Ls: off wh-tan, fn xln, poor int xln porosity, fair oil sat, SSFO on brk, mostly tite, scat chalky  
 Sh: drk gry  
 Sh: drk gry-blk  
 Ls: off wh-tan, fn-vry fn xln, poor-scat fair int xln porosity, fair oil sat, SSFO, fair odor, chalky, scat fossil  
 Sh: drk gry-brn-grn  
 Ls: tan-lt gry, fn xln, scat int xln porosity, NSFO, fossil, chalky  
 Ls: off wh-tan, fn xln, ool, fair-good oom porosity, fair oil st, SSFO, fair odor, chalky, scat chert-off wh  
 Sh: drk gry-brn  
 Ls: tan-lt gry, fn-sub xln, vry DNS, hard, no visible porosity, hv y chert-off wh, chalky  
 Ls: tan-lt gry, fn-sub xln, DNS, no visible porosity, hv y chert-off wh, chalky  
 Sh: drk arv-blk

DST #1 2,928'-2,968' (Lansing C)  
 30"-30"-60"-60"  
 IF: Packer failed, reseal and blow built to 9"  
 FF: BOB in 9 minutes, no blow back  
 Rec: 270' GIP, 40' OCM (20% O, 80% M)  
 FP: 20-22, 23-29#  
 SIP: 214-573#  
 HP: 1,450-1,449#  
 BHT: 101

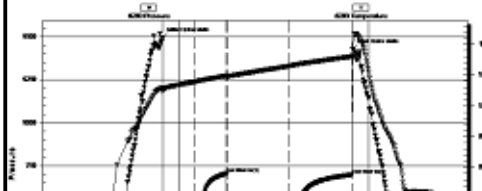


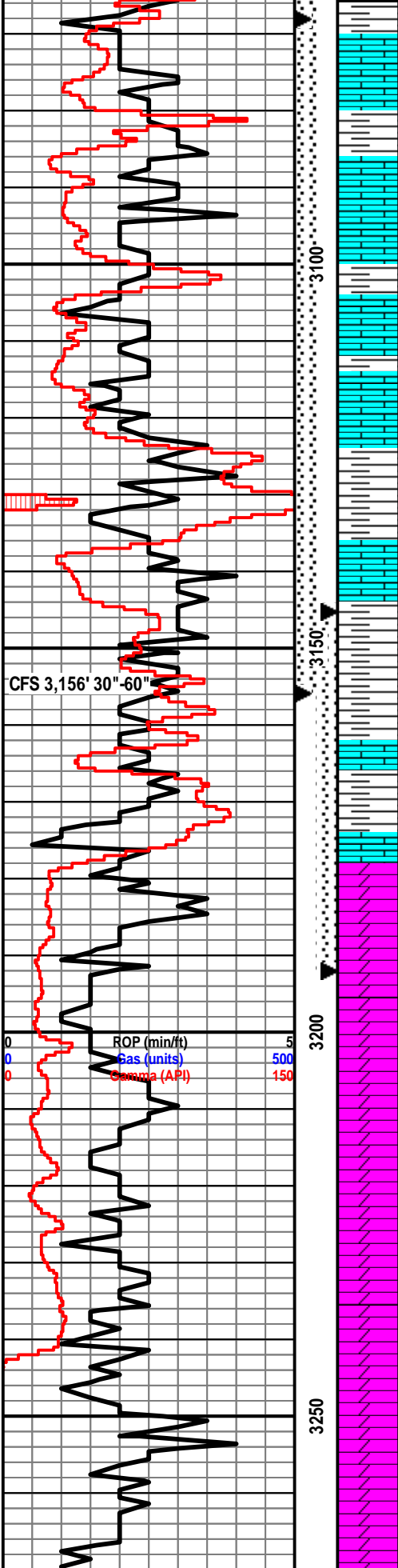
DST #2 2,989'-3,018' (Lansing E-F)  
 30"-30"-60"-60"  
 IF: Weak blow built to 2.75"  
 FF: Weak blow built to 3.25"  
 Rec: 30' WCM (25% W, 75% M)  
 FP: 13-20, 19-45#  
 SIP: 169-187#  
 HP: 1,475-1,399#  
 BHT: 100



Wt: 8.8  
 Vis: 52

DST #3 3,021'-3,068' (Lansing G)  
 30"-30"-60"-60"  
 IF: weak blow built to 7"  
 FF: weak blow built to 8"  
 Rec: 127' MCW (5% M, 95% W)  
 FP: 21-43, 47-80#  
 SIP: 705-699#  
 HP: 1,495-1,429#  
 BHT: 98





Ls: tan-lt gry, fn-sub xln, mostly DNS, fossil, scat chalk

Sh: drk gry

Ls: off wh-tan, fn xln, poor int xln porosity, SSFO, vry lt odor, chalky, chert-off wh

Ls: tan-gry, fn xln, scat int xln porosity, NSFO, chalky, scat pyrite

Ls: off wh-tan, fn xln, fossil, poor int fossil porosity, sl oil sat, SSFO, sl odor, chalky, scat chert-off wh

Sh: drk gry

Ls: tan-lt gry, fn xln, vry poor int xln porosity, NSFO, no odor, chalky, scat chert-off wh

Sh: drk gry-blk

Ls: tan-gry, fn-sub xln, mostly DNS, chert, scat chalk, fossil

**B/KC 3155' (-1403)**

Sh: drk gry-brn-grn

Sh: drk gry-grn, soft

Ls: tan-brn, fn xln, mostly DNS, NSFO, chert-off wh

Ls: ala, scat sh: drk gry-grn, soft

**Arbuckle 3184' (-1432)**

Dolo: off wh, fn-md xln, poor-fair int xln porosity, SSFO, lt odor

Dolo: off wh, fn-md xln, fair int xln porosity, SFO, fair-good odor, fair yel fluor

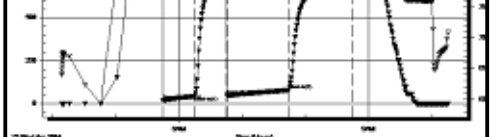
Dolo: off wh-lt tan, fn-md xln, poor int xln porosity, VSSFO, lt odor

Dolo: off wh-tan, vry fn-md xln, poor-fair int xln porosity, VSSFO, lt odor

Dolo: off wh, fn-md xln, mostly DNS, no visible porosity, NSFO

Dolo: ala

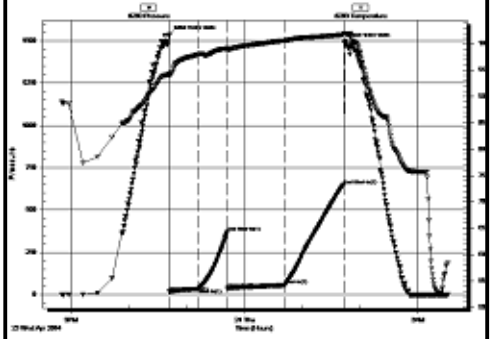
Dolo: off wh, fn-md xln, poor int xln porosity, mostly barren, NSFO, no odor, chert-off wh



Wt: 9.2  
Vis: 48

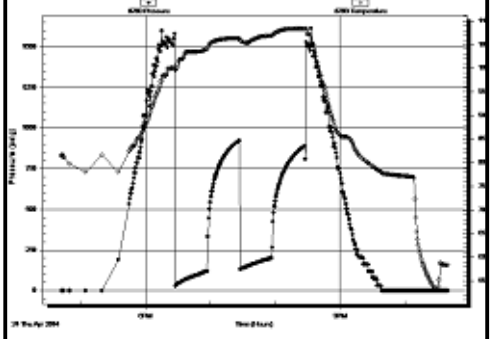
**DST #4 3,064-3,156' (Lansing H-L)  
30"-30"-60"-60"**

IF: BOB in 10 minutes, no blow back  
FF: BOB in 2 minutes, no blow back  
Rec: 520' GIP, 40' OCM (25% O, 75% M), 62' GOCM (20% O, 40% M, 40% G)  
FP: 16-35, 36-56#  
SIP: 368-648#  
HP: 1,534-1,489#  
BHT: 102



**DST #5 3,145-3,192' (Top 15' Arbuckle)  
30"-30"-30"-30"**

IF: BOB in 5 1/2 minutes, 1" blow back  
FF: BOB in 6 minutes, 1.5" blow back  
Rec: 219' GIP, 107' CO (30API), 375' GMCO (10% G, 15% M, 75% O)  
FP: 26-121, 136-202#  
SIP: 926-893  
HP: 1,584-1,529#  
BHT: 108



Wt: 9.1  
Vis: 62