



*Depend on US*

# Post Job Report

## **Merit Energy**

GCCU 202W

3/29/2016

8.625" Surface Casing

Haskell County, KS





Table of Contents:

1.0 Executive Summary.....3

2.0 Job Summary.....4

    2.1 Job Event Log.....4

    2.2 Job Chart.....5

3.0 Water Testing.....6

4.0 Customer Satisfaction Survey.....7



1.0 Executive Summary

Allied Oil & Gas Services would like to thank you for the award of the provision of cementing products and services on the well GCCU 202W.

A pre-job meeting was held to discuss job details, review the safety hazards, potential environmental impact and established emergency procedures.

Allied started the job testing lines to 1000 psi. After a successful test we began the job by pumping 10 bbls of Fresh Water spacer. We then mixed and pumped the following cements:

158.95 bbl	350 Sacks of 12.1 ppg
Class A Slurry -	2.55 Yield

- 2.0% Sodium Metasilicate
- 2.0% Gypsum
- 4.0% Gel
- 2.0% Sodium Chloride
- 3.0 % Calcium Chloride
- 0.25 lb Cellophane Flake

31.67 bbl	140 Sacks of 15.2 ppg
Class A Slurry -	1.27 Yield

- 2.0 % Calcium Chloride
- 0.25 lb Cellophane Flake

The top plug was then released and displaced with 122.4 Bbls of Fresh Water. The plug bumped and was pressured to 1560 psi. Upon release the floats held. 3 bbl cement returned to the pit. Cement fell back around pipe.

Allied topped out well with 100 sacks of Class A with 2% Calcium Chloride mixed at 15.6 and a 1.19 yield.

All real time data can be view in the Job Summary section.

Allied Oil & Gas Services remains committed to provide operational excellence and superior product performance. All comments and suggestions are greatly appreciated and help us to continue to provide this level of service.

Again we want to thank you for the opportunity to perform these and your future cementing & acidizing service needs.

## Cement Job Summary

Job Number: <b>Lib1603291700</b>		Job Purpose: <b>01 Surface</b>	
Customer: <b>MERIT ENERGY COMPANY</b>	Date: <b>3/29/2016</b>		
Well Name: <b>GCCU</b>	Number: <b>202W</b>	API/UWI:	
County: <b>Haskell</b>	City: <b>Sublette</b>	State: <b>KS</b>	
Cust. Rep:	Phone:	Rig Phone:	
Distance: <b>50 miles (one way)</b>	Supervisor: <b>Lenny Baeza</b>		

Employees:	Emp. ID:	Employees:	Emp. ID:
Oscar Sigala		Ramon Escarcega	
Jose Calderon		Lenny Baeza	
Aldo Espinoza			

Equipment:	
994-550	993-1066
955-842	

Materials - Pumping Schedule					
STAGE #1					
Fluid Name	Description	Rqstd Qty	Density	Yield	Water (gal/sk)
Spacer 1	FRESH WATER	10	8.33	n/a	n/a
Fluid Name	Description	Rqstd Qty	Density	Yield	Water (gal/sk)
Lead 1	ALLIED MULTI-DENSITY CEMENT - CLASS A	350	12.10	2.55	14.86
Fluid Name	Description	Rqstd Qty	Density	Yield	Water (gal/sk)
Tail 1	CLASS A COMMON	140	15.19	1.27	5.75
Fluid Name	Description	Rqstd Qty	Density	Yield	Water (gal/sk)
Tail 2	CLASS A COMMON	100	15.63	1.19	5.20
Fluid Name	Description	Rqstd Qty	Density	Yield	Water (gal/sk)
Disp. 1	Displacement	101.1294929	8.33	n/a	n/a

Slurry: Lead 1      Slurry Name: ALLIED MULTI-DENSITY CEMENT - CLASS A Light						
Quantity:	350 sacks	Blend Vol:	441.2 cu.ft.	Blend Weight:	37560.4866 lbs	
Material	Description	Conc. (lb/sk)	Determined by	Load Volume	UOM	
CCAC	CLASS A COMMON	94	% Base Materia	32900.0	lbm	
CA-500	GYP SUM	1.88	% BWOC	658.0	lbm	
CA-400	SODIUM METASILICATE	1.88	% BWOC	658.0	lbm	
Cgel	GEL - BENTONITE	3.76	% BWOC	1316.0	lbm	
CA-200	SODIUM CHLORIDE	2.475676	% BWOW	866.5	lbm	
CA-100	CALCIUM CHLORIDE, PELLETS OR FLAKE	2.82	% BWOC	987.0	lbm	
CLC-CPF	CELLOPHANE FLAKES	0.5	lb/sk	175.0	lbm	
Water	Mixing Water	14.86	gal/sk	5201	gal	

Slurry: Tail 1      Slurry Name: CLASS A COMMON						
Quantity:	140 sacks	Blend Vol:	149.88 cu.ft.	Blend Weight:	13493.2 lbs	
Material	Description	Conc. (lb/sk)	Determined by	Load Volume	UOM	
CCAC	CLASS A COMMON	94	% Base Materia	13160.0	lbm	
CA-100	CALCIUM CHLORIDE, PELLETS OR FLAKE	1.88	% BWOC	263.2	lbm	
CLC-CPF	CELLOPHANE FLAKES	0.5	lb/sk	70.0	lbm	
Water	Mixing Water	5.75	gal/sk	805.0	gal	

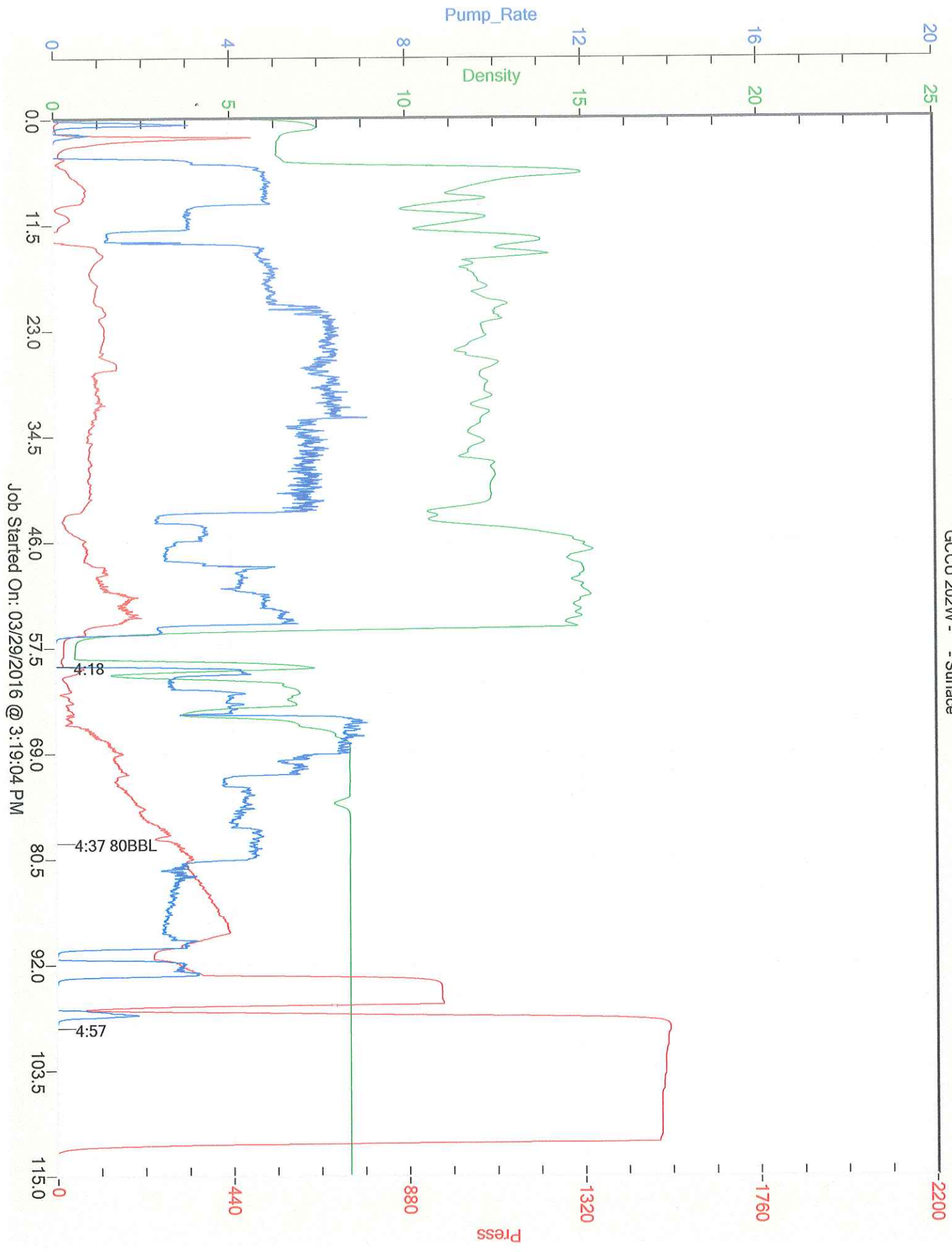
Slurry: Tail 2      Slurry Name: CLASS A COMMON						
Quantity:	100 sacks	Blend Vol:	103.73 cu.ft.	Blend Weight:	9588 lbs	
Material	Description	Conc. (lb/sk)	Determined by	Load Volume	UOM	
CCAC	CLASS A COMMON	94	% Base Materia	9400.0	lbm	



## Cement Job Summary

CA-100	CALCIUM CHLORIDE, PELLETS OR FLAKE	1.88	% BWOC	188.0	lbm
Water	Mixing Water	5.20	gal/sk	520	gal

Job Number: <b>Lib1603291700</b>		Job Purpose: <b>01 Surface</b>				
Customer: <b>MERIT ENERGY COMPANY</b>			Date: <b>3/29/2016</b>			
Well Name: <b>GCCU</b>		Number: <b>202W</b>		API/UWI:		
County: <b>Haskell</b>		City: <b>Sublette</b>		State: <b>KS</b>		
Cust. Rep:		Phone:		Rig Phone: <b>0</b>		
Distance: <b>50 miles (one way)</b>			Supervisor: <b>Lenny Baeza</b>			
DATE	TIME	PRESSURE - (PSI)		FLUID PUMPED DATA		COMMENTS
		CASING	ANNULUS	VOLUME	RATE (BPM)	
3/29/2016	1:30pm					ARRIVE ON LOCATION
	3:00pm					SAFETY MEETING
	3:21pm	100		2	3	PUMP WATER AHEAD
	3:23pm	1000		2	1	Pressure test lines
	3:26pm	130		10	4	Rest of H2O ahead
	3:31pm	90		168	5	Mixing Lead cement @12.1#
	4:05pm	80		199	4	Mxing Tail cement @ 15.2#
	4:18pm	0		199	0	Shut down to release plug
	4:19pm	40		199		Plug left and started displacement of 122.4 bbls
	4:23pm	60		219	5	20bbls gone
	4:26pm	120		239	6	40bbls gone
	4:29pm	180		259	5	60bbls gone
	4:31pm	240		279	5	80bbls gone
	4:38pm	350		299	3	100bbls gone
	4:45pm	430		314	3	115bbls gone slowing down
	4:55pm	1000		324	3	122bbls gone and landed the plug
						3 bbls of cement to surface
	4:55pm	1500				Testing casing
	5:10pm	0				Good Test BUT well fell back waiting for cement to top off
	7:45pm	120		21	3	100sk Class A 2%CC to top off the well
	8:30pm					Leaving location 8:30pm



Job Started On: 03/29/2016 @ 3:19:04 PM



Customer: MERIT ENERGY COMPANY  
Date: Tuesday, March 29, 2016  
Well Name: GCCU # 202W  
Well Location: Sublette  
Supervisor: Lenny Baeza

Equipment Operators: Oscar Sigala - Ramon Escarcega - Jose Calderon - Lenny Baeza - Aldo Espinoza

Performance	Customer	
Was the appearance of the personnel and equipment satisfactory?	Yes	No
Was the job performed in a professional manner?	Yes	No
Were the calculations prepared and explained properly?	Yes	No
Were the correct services dispatched to the job site?	Yes	No
Were the services performed as requested?	Yes	No
Did the job site environment remain unchanged?	Yes	No
Did the equipment perform in the manner expected?	Yes	No
Did the materials meet your expectations?	Yes	No
Was the crew prepared for the job?	Yes	No
Was the crew prompt in the rig-up and actual job?	Yes	No
Were reasonable recommendations given, as requested?	Yes	No
Did the crew perform safely?	Yes	No
Was the job performed to your satisfaction?	Yes	No

Customer Signature:

Date: 3-29-16

Additional Comments:




**CEMENT MIXING WATER GUIDELINES**

Company Name: MERIT ENERGY COMPANY

Lease Name: GCCU # 202W

County Haskell State KS

Water Source: TANK

Submitted By: Lenny Baeza Date: 3/29/2016

pH Level	<u>Good</u>	Must be less than 8.5
Sulfates	<u>Good</u>	Must be less than 1,000 PPM
Chlorides	<u>Good</u>	Must be less than 3,000 PPM
Temperature	<u>68</u>	Must be less than 100 deg F

**COMMENTS**

Thank You

Customer Signature 