



Depend on US

Post Job Report

Merit Energy

GCCU 202W

4/3/2015

5.5" 2-Stage Production Casing

Haskell County, KS





Table of Contents:

1.0 Executive Summary.....	3
2.0 Job Summary.....	4
2.1 Job Event Log.....	4
2.2 Job Chart.....	6
3.0 Water Testing.....	8
4.0 Customer Satisfaction Survey.....	9



1.0 Executive Summary

Allied Oil & Gas Services would like to thank you for the award of the provision of cementing products and services on the well GCCU 202W intermediate casing.

A pre-job meeting was held to discuss job details, review the safety hazards, potential environmental impact and established emergency procedures.

Allied started the job testing lines to 3000 psi. After a successful test we began the job by plugging the rat hole and mouse hole with 50 sacks and then began pumping 12 bbls of HiVis Sweep spacer. We then mixed and pumped the following cements:

1st Stage:

28.67 bbl	100 Sacks of 13.6 ppg
50/50 H Slurry:	1.61 Yield
10.0% Salt	
5.0% Gypsum	
2.0% Gel	
0.5% CFL-210	
5.0 lb Kol-Seal	
0.25 lb Cellophane Flake	
0.2% CD-100	

2nd Stage:

76.94 bbl	225 Sacks of 13.6 ppg
Class A Slurry -	1.92 Yield
10.0% Salt	
6.0% Gypsum	
2.0% Gel	
0.5% CFL-210	
5.0 lb Kol-Seal	
0.25 lb Cellophane Flake	

The first stage was displaced with 35 bbl fresh water and 93 Bbls of WBM. The plug bumped and was pressured to 910 psi. Upon release the floats held. The stage tool was opened at 750 psi and the rig circulated 4 hours. These second stage was displaced with 117 bbl fresh water. The plug bumped and was pressured to 1990.

All real time data can be view in the Job Summary section.

Allied Oil & Gas Services remains committed to provide operational excellence and superior product performance. All comments and suggestions are greatly appreciated and help us to continue to provide this level of service.

Again we want to thank you for the opportunity to perform these and your future cementing & acidizing service needs.

Cement Job Summary

Job Number: LIB1604031310		Job Purpose: 02 Production/Long String	
Customer: MERIT ENERGY COMPANY	Date: 4/3/2016		
Well Name: GCCU	Number: #202W	API/UWI:	
County: Haskell	City: Sublette	State: KS	
Cust. Rep:	Phone:	Rig Phone:	
Distance: 50 miles (one way)		Supervisor:	Edgar Rodriguez

Employees:	Emp. ID:	Employees:	Emp. ID:
Edgar Rodriguez	#N/A		
Lorenzo Rios	#N/A		
Ramon Escarcega	#N/A		

Equipment:	Emp. ID:	Equipment:	Emp. ID:
	1039		
	903		541
	774		744

Materials - Pumping Schedule

STAGE #1						
Fluid Name	Description	Rqstd Qty	Density	Yield	Water (gal/sk)	
Spacer 1	HIVIS SWEEP	12	8.40	n/a	n/a	
Fluid Name	Description	Rqstd Qty	Density	Yield	Water (gal/sk)	
Lead 1	ALLIED 50/50 POZ BLEND - CLASS H	50	13.60	1.61	7.37	
Fluid Name	Description	Rqstd Qty	Density	Yield	Water (gal/sk)	
Tail 1	ALLIED 50/50 POZ BLEND - CLASS H	100	13.60	1.61	7.37	
Fluid Name	Description	Rqstd Qty	Density	Yield	Water (gal/sk)	
Disp. 1	Displacement	137	8.33	n/a	n/a	
STAGE #2						
Fluid Name	Description	Rqstd Qty	Density	Yield	Water (gal/sk)	
Stg 2 Spacer 1	HIVIS SWEEP	12	8.40	n/a	n/a	
Fluid Name	Description	Rqstd Qty	Density	Yield	Water (gal/sk)	
Stg 2 Tail 1	ALLIED SPECIAL BLEND CEMENT - CLASS A	225	13.60	1.92	9.56	
Fluid Name	Description	Rqstd Qty	Density	Yield	Water (gal/sk)	
Stg 2 Disp. 1	Displacement	137	8.33	n/a	n/a	

Slurry: Lead 1 Slurry Name: ALLIED 50/50 POZ BLEND - CLASS H						
Quantity:	50 sacks	Blend Vol:	65.66 cu.ft.	Blend Weight:	5092.8605 lbs	
Material	Description	Conc. (lb/sk)	Determined by	Load Volume	UOM	
CCHP	CLASS H PREMIUM	47	% Base Material	2350.0	lbm	
CPOZ	POZMIX FLYASH	37	% Base Material	1850.0	lbm	
CGEL	GEL - BENTONITE	1.68	% BWOC	84.0	lbm	
CFL-210	FLUID LOSS ADDITIVE - LOW TEMP	0.42	% BWOC	21.0	lbm	
CLC-KOL	KOL-SEAL	5	lb/sk	250.0	lbm	
CLC-CPF	CELLOPHANE FLAKES	0.25	lb/sk	12.5	lbm	
CA-200	SODIUM CHLORIDE	6.13921	% BWOW	307.0	lbm	
CA-500	GYPSUM	4.2	% BWOC	210.0	lbm	
CD-100	CEMENT DISPERSANT	0.168	% BWOC	8.4	lbm	
Water	Mixing Water	7.37	gal/sk	368.5	gal	

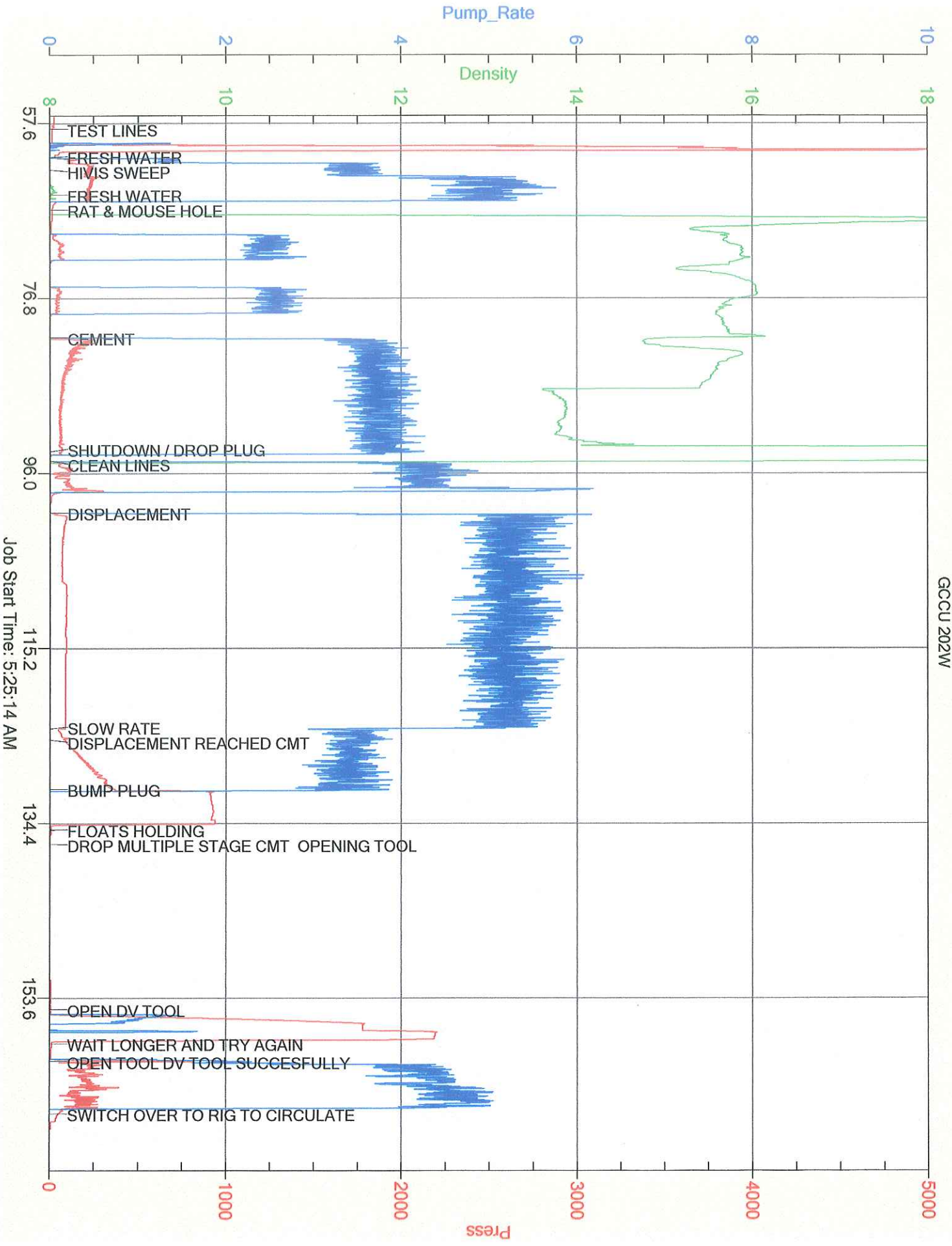
Slurry: Tail 1 Slurry Name: ALLIED 50/50 POZ BLEND - CLASS H						
Quantity:	100 sacks	Blend Vol:	131.31 cu.ft.	Blend Weight:	10185.721 lbs	
Material	Description	Conc. (lb/sk)	Determined by	Load Volume	UOM	
CCHP	CLASS H PREMIUM	47	% Base Material	4700.0	lbm	
CPOZ	POZMIX FLYASH	37	% Base Material	3700.0	lbm	
CGEL	GEL - BENTONITE	1.68	% BWOC	168.0	lbm	
CFL-210	FLUID LOSS ADDITIVE - LOW TEMP	0.42	% BWOC	42.0	lbm	
CLC-KOL	KOL-SEAL	5	lb/sk	500.0	lbm	
CLC-CPF	CELLOPHANE FLAKES	0.25	lb/sk	25.0	lbm	
CA-200	SODIUM CHLORIDE	6.13921	% BWOW	613.9	lbm	
CA-500	GYPSUM	4.2	% BWOC	420.0	lbm	
CD-100	CEMENT DISPERSANT	0.168	% BWOC	16.8	lbm	
Water	Mixing Water	7.37	gal/sk	737.0	gal	

Slurry: Stg 2 Tail 1 Slurry Name: ALLIED SPECIAL BLEND CEMENT - CLASS A						
Quantity:	225 sacks	Blend Vol:	467542345265 cu.ft.	Blend Weight:	25920.783 lbs	
Material	Description	Conc. (lb/sk)	Determined by	Load Volume	UOM	
CCAC	CLASS A COMMON	94	% Base Material	21150.0	lbm	
CA-200	SODIUM CHLORIDE	7.96348	% BWOW	1791.8	lbm	
CA-500	GYPSUM	5.64	% BWOC	1269.0	lbm	
CGEL	GEL - BENTONITE	1.88	% BWOC	423.0	lbm	
CFL-210	FLUID LOSS ADDITIVE - LOW TEMP	0.47	% BWOC	105.8	lbm	
CLC-KOL	KOL-SEAL	5	lb/sk	1125.0	lbm	
CLC-CPF	CELLOPHANE FLAKES	0.25	lb/sk	56.3	lbm	
Water	Mixing Water	9.56	gal/sk	2151.0	gal	

Cement Job Summary

Job Number: LIB1604031310		Job Purpose: 02 Production/Long String		Date: 4/3/2016		
Customer: MERIT ENERGY COMPANY				Number: #202W		
Well Name: GCCU		City: Sublette		API/UWI:		
County: Haskell		State: KS		Rig Phone: 0		
Cust. Rep:		Phone:		Supervisor: Edgar Rodriguez		
Distance: 50 miles (one way)		Supervisor: Edgar Rodriguez				
DATE	TIME	PRESSURE - (PSI)		FLUID PUMPED DATA		COMMENTS
		CASING	ANNULUS	VOLUME	RATE (BPM)	
4/3/2016	2:30:00 AM					ARRIVE TO LOCATION
4/3/2016	2:30:00 AM					RIG RUNNING CASING
4/3/2016	2:40:00 AM					SPOT EQUIPMENT
4/3/2016	2:50:00 AM					RIG UP IRON ON GROUND
4/3/2016	5:31:00 AM					CASING ON BOTTOM
4/3/2016	5:35:00 AM					STAB CMT HEAD AND RIG UP FLOOR TO CIRCULATE
4/3/2016	5:50:00 AM					CASING CREW OUT OF WAY / RIG UP GROUND
4/3/2016	6:10:00 AM					PRE-JOB SAFETY MEETING
4/3/2016	6:23:00 AM	4400				TEST LINES
4/3/2016	6:24:00 AM	140		14	2	3 BBLS OF WATER
4/3/2016	6:26:00 AM	200		3	4	12 BBLS OF HAVIS SWEEP
4/3/2016	6:29:00 AM	200		12	4	3 BBLS OF WATER
4/3/2016	6:33:00 AM	50		3	4	PLUG RAT & MOUSE HOLE WITH 50 SKS OF CMT (14 BBLS @13.6)
4/3/2016	6:45:00 AM	70		29	4	100 SKS OF CMT (29 BBLS @13.6)
4/3/2016	6:58:00 AM					SHUTDOWN / CLEAN LINES / DROP LATCH DOWN PLUG
4/3/2016	7:04:00 AM	70		35	5	PUMP 35 BBLS OF FRESH WATER AT 5 BPM
4/3/2016	7:12:00 AM	70			5	PUMP 93 BBLS OF WBM AT 5 BPM / FOR 128 BBLS TOTAL DISP.
4/3/2016	7:29:00 AM	120		118	5	DISP. REACHED CMT AT 118 BBLS GONE
4/3/2016	7:30:00 AM	120		110	3	PLUG PASSING THRU DV TOOL / SLOW RATE TO 3 BPM
4/3/2016	7:31:00 AM	120		118	3	NO SIGNIFICANT SHEAR PRESSURE / CONTINUE DISP. AT 3 BPM
4/3/2016	7:35:00 AM	370		128	3	BUMP PLUG WITH 370 PSI AND TOOK OVER TO 910 PSI AT 128 BBLS
4/3/2016	7:38:00 AM					FLOATS HOLDING FOR 3 MINUTES - 1/4 BBL BACK
4/3/2016	7:44:00 AM					DROP MULTIPLE STAGE CEMENTING OPENING TOOL
4/3/2016						WAIT 15 MINUTES FOR TOOL TO FALL
4/3/2016	8:05:00 AM	750		1	2	OPEN MULTIPLE STAGE CEMENTING DV TOOL WITH 750 PSI
4/3/2016	8:10:00 AM					CIRCULATION ESTABLISHED / CLEAN TANKS OUT
4/3/2016	8:15:00 AM					1ST STAGE COMPLETE / TURN OVER TO RIG TO CIRCULATE FOR 4 HRS
4/3/2016	12:00:00 PM					2ND STAGE
4/3/2016	12:05:00 PM	350		3	3.5	3 BBLS OF WATER
4/3/2016	12:06:00 PM	400		12	3.5	12 BBLS OF HAVIS SWEEP
4/3/2016	12:08:00 PM	410		3	3.5	3 BBLS OF WATER
4/3/2016	12:09:00 PM	70		77	4.5	225 SKS OF CMT (77 BBLS @13.6)
4/3/2016	12:33:00 PM					SHUTDOWN / CLEAN LINES / DROP CLOSING PLUG
4/3/2016	12:40:00 PM	60			5.5	117 BBLS DISPLACEMENT AT 6 BPM
4/3/2016	12:54:00 PM	140		78	5.5	DISP. REACHED CMT AT 75 BBLS GONE
4/3/2016	1:00:00 PM	640		105	3	SLOW RATE TO 3 BPM TO BUMP PLUG
4/3/2016	1:04:00 PM	740		117	3	BUMP PLUG WITH 740 PSI AND TOOK UP TO 1990 PSI
4/3/2016	1:10:00 PM					FLOATS HOLDING FOR 5 MINUTES / 1 BBL BACK
4/3/2016	1:10:00 PM					END JOB / FULL CIRCULATION BOTH STAGES
4/3/2016	1:20:00 PM					RIG DOWN EQUIPMENT
4/3/2016	2:20:00 PM					CREW LEAVE LOCATION

MERIT ENERGY 1ST STAGE
GCCU 2021W



Job Start Time: 5:25:14 AM

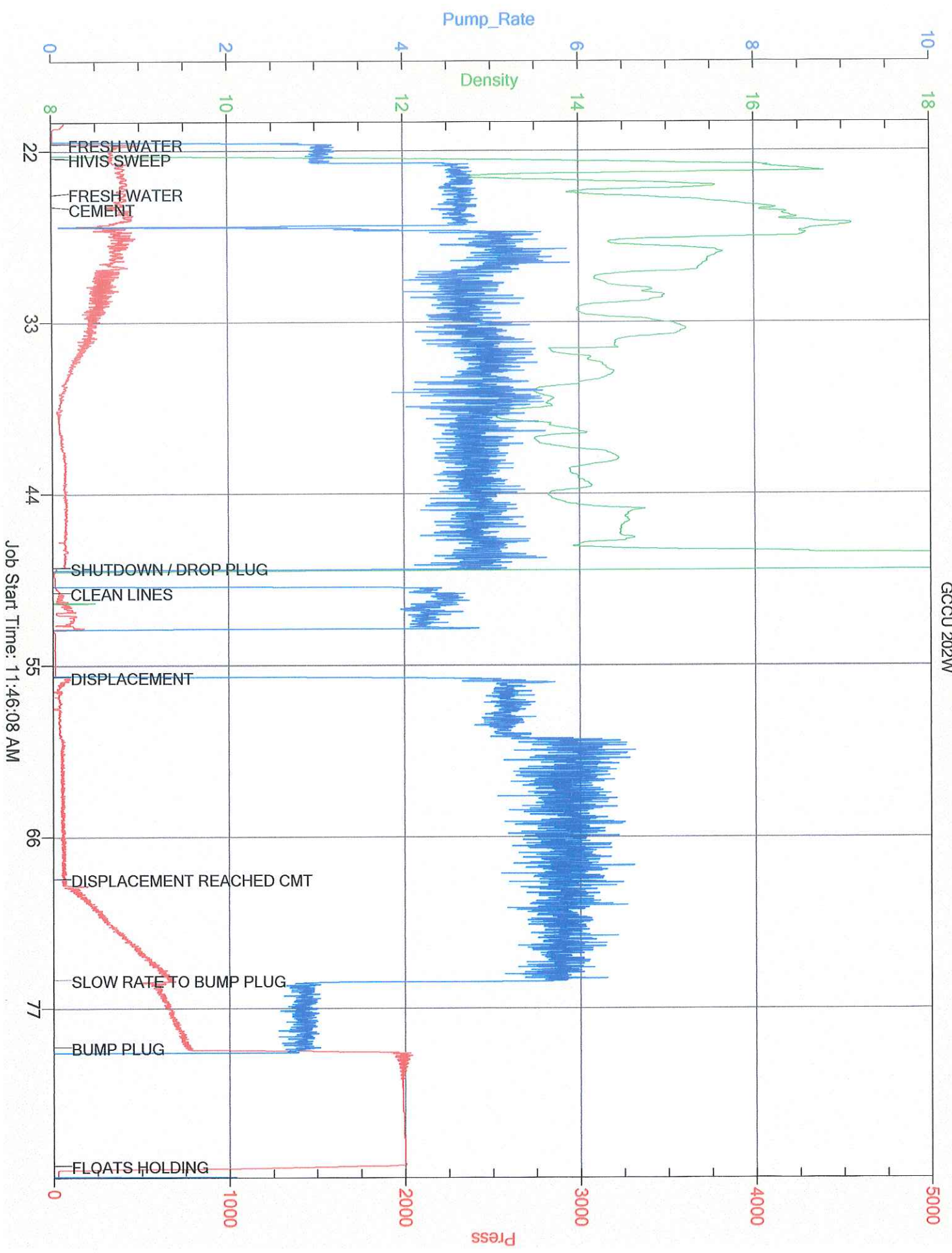
Pump_Rate

Density

Press

MERIT ENERGY 2ND STAGE

GCCU 202W





CEMENT MIXING WATER GUIDELINES

Company Name: MERIT ENERGY COMPANY

Lease Name: GCCU # #202W


County Haskell State KS

Water Source: TANK

Submitted By: Edgar Rodriguez Date: 4/3/2016

pH Level	<u>7</u>	Must be less than 8.5
Sulfates	<u>200</u>	Must be less than 1,000 PPM
Chlorides	<u>550</u>	Must be less than 3,000 PPM
Temperature	<u>62</u>	Must be less than 100 deg F

COMMENTS

Customer Signature 

Thank You



Customer: MERIT ENERGY COMPANY
 Date: Sunday, April 03, 2016
 Well Name: GCCU # #202W
 Well Location: Sublette
 Supervisor: Edgar Rodriguez

Equipment Operators: Edgar Rodriguez - Lorenzo Rios - Ramon Escarcega

Performance	Customer	
Was the appearance of the personnel and equipment satisfactory?	Yes	No
Was the job performed in a professional manner?	Yes	No
Were the calculations prepared and explained properly?	Yes	No
Were the correct services dispatched to the job site?	Yes	No
Were the services performed as requested?	Yes	No
Did the job site environment remain unchanged?	Yes	No
Did the equipment perform in the manner expected?	Yes	No
Did the materials meet your expectations?	Yes	No
Was the crew prepared for the job?	Yes	No
Was the crew prompt in the rig-up and actual job?	Yes	No
Were reasonable recommendations given, as requested?	Yes	No
Did the crew perform safely?	Yes	No
Was the job performed to your satisfaction?	Yes	No
Customer Signature:	Date: <u>4-3-16</u>	
Additional Comments:		
<u>Great Job!</u>		