

BASICSM
ENERGY SERVICES
PRESSURE PUMPING & WIRELINE

1700 S. Country Estates Rd.
Liberal, Kansas 67905
Phone 620-624-2277

FIELD SERVICE TICKET
1717 05844 A

DATE _____ TICKET NO. _____

DATE OF JOB <u>6-14-14</u> DISTRICT <u>1717</u>		NEW WELL <input checked="" type="checkbox"/> OLD WELL <input type="checkbox"/> PROD <input type="checkbox"/> INJ <input type="checkbox"/> WDW <input type="checkbox"/> CUSTOMER ORDER NO.:							
CUSTOMER <u>Stelbar</u>		LEASE <u>Dairy</u> # <u>1-18</u>		WELL NO.					
ADDRESS		COUNTY <u>Scott</u>		STATE <u>KS</u>					
CITY STATE		SERVICE CREW <u>J. Chavez, David, Norma, Ricardo</u>							
AUTHORIZED BY <u>Tony Best</u>		JOB TYPE: <u>242 5 1/2 D.U. Long Stray</u>							
EQUIPMENT#	HRS	EQUIPMENT#	HRS	EQUIPMENT#	HRS	TRUCK CALLED	DATE	AM	TIME
							<u>6-14-14</u>	<u>PM</u>	<u>1:00</u>
<u>78938</u>	<u>16</u>	<u>130464</u>	<u>16</u>	<u>130463</u>	<u>16</u>	ARRIVED AT JOB	<u>6-14-14</u>	<u>AM</u>	<u>4:00</u>
		<u>137547</u>	<u>1</u>	<u>19566</u>	<u>1</u>	START OPERATION	<u>6-14-14</u>	<u>AM</u>	<u>6:30</u>
<u>JZ7462</u>	<u>16</u>					FINISH OPERATION	<u>6-14-14</u>	<u>AM</u>	<u>6:30</u>
						RELEASED	<u>6-14-14</u>	<u>AM</u>	<u>7:30</u>
						MILES FROM STATION TO WELL	<u>100</u>		

CONTRACT CONDITIONS: (This contract must be signed before the job is commenced or merchandise is delivered).

The undersigned is authorized to execute this contract as an agent of the customer. As such, the undersigned agrees and acknowledges that this contract for services, materials, products, and/or supplies includes all of and only those terms and conditions appearing on the front and back of this document. No additional or substitute terms and/or conditions shall become a part of this contract without the written consent of an officer of Basic Energy Services LP.

SIGNED: X Jh
(WELL OWNER, OPERATOR, CONTRACTOR OR AGENT)

ITEM/PRICE REF. NO.	MATERIAL, EQUIPMENT AND SERVICES USED	UNIT	QUANTITY	UNIT PRICE	\$ AMOUNT
CL105	AA2 Cont	SK	150		2730 00
CL101	A-Con Blend	SK	325		6045 00
CL110	Prem PMS Cont	SK	120		1956 00
CC113	Gypsum	LB	705		528 75
CC111	Salt	LB	829		414 50
CC103	VC-15	LB	100		1325 00
CC107	G-42P	LB	34		238 00
CC201	B. Sonite	LB	750		502 50
CC102	Cellulose	LB	130		481 00
CC109	Potassium Chloride	LB	1354		1421 70
CF1251	AFU Shoe	EA	1		360 00
CF601	5 1/2 Latch Down Plug	EA	1		850 00
CF401	Two Stage Cont Collar	EA	1		6100 00
CF445Z	Centralizer	EA	15		1125 00
CF455Z	Master 5 1/2	EA	1		955 00
CF3000	JR Thread/Head Kit	EA	1		34 00
CC155	Super Flush	gal	500		765 00
E101	Heavy Equipment Milage	mi.	300		2100 00
CE240	Blends & Mixing Chem	SK	670		938 00

SUB TOTAL 27562 84

CHEMICAL / ACID DATA:			

SERVICE & EQUIPMENT	%TAX ON \$	
MATERIALS	%TAX ON \$	
TOTAL		

SERVICE REPRESENTATIVE Jerry Chavez THE ABOVE MATERIAL AND SERVICE ORDERED BY CUSTOMER AND RECEIVED BY: X Jh
(WELL OWNER OPERATOR CONTRACTOR OR AGENT)

FIELD SERVICE ORDER NO.



Cement Report

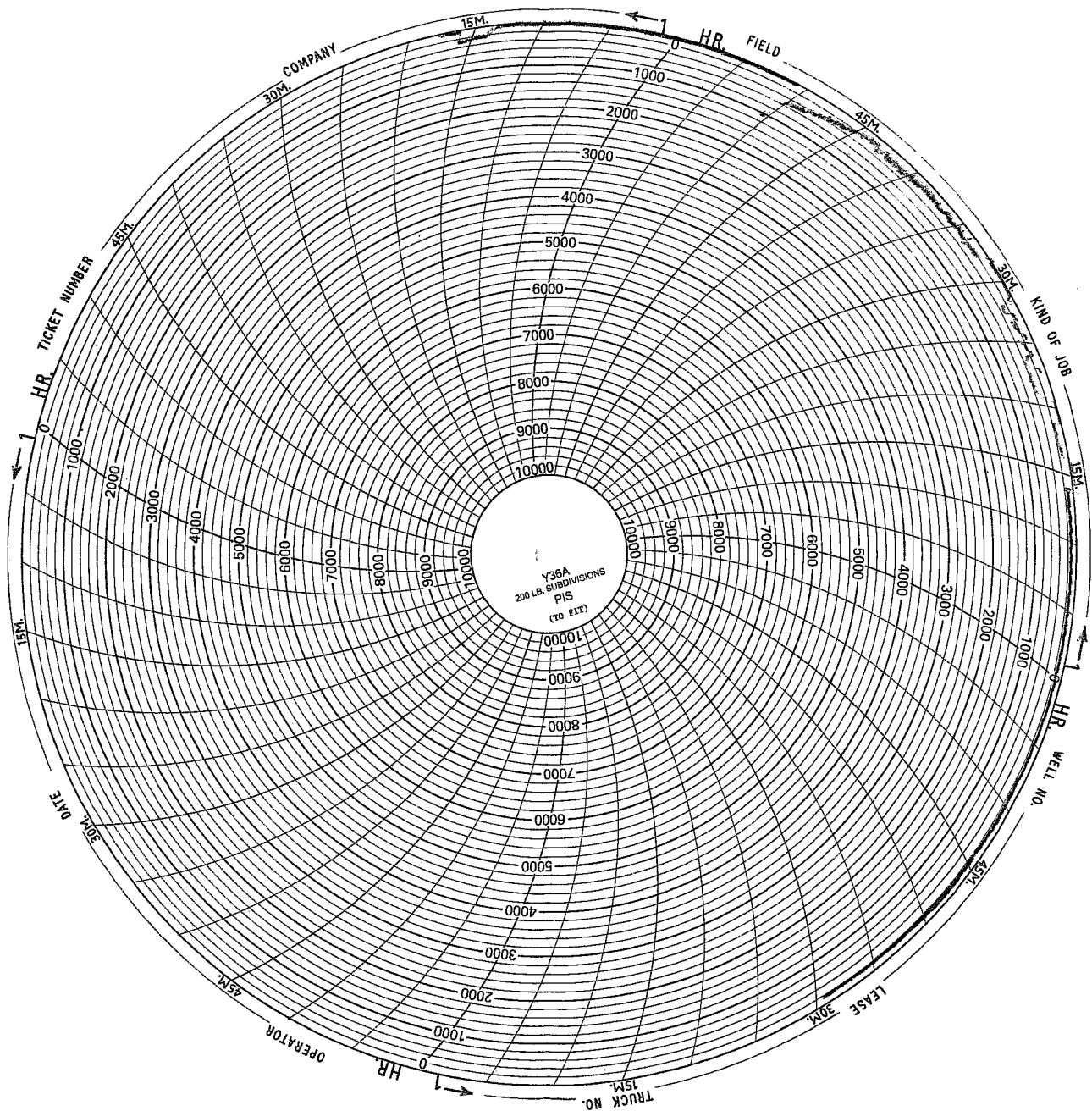
Customer <i>Stelber</i>		Lease No.		Date <i>6-14-14</i>	
Lease <i>Dairy</i>		Well # <i>1-18</i>		Service Receipt <i>5844</i>	
Casing <i>5 1/2</i>	Depth <i>4543</i>	County <i>SCOTT</i>		State <i>KS</i>	
Job Type <i>242 D.V. Long Stay</i>		Formation		Legal Description <i>18-17-32</i>	
Pipe Data			Perforating Data		Cement Data
Casing size <i>5 1/2</i>	Tubing Size		Shots/Ft		Lead <i>325 SK ACON</i>
Depth <i>4550</i>	Depth <i>5542</i>	From	To		<i>2.95 FT 3-SK</i>
Volume <i>107.4615</i>	Volume	From	To		<i>2.6361-SK 11.4</i>
Max Press <i>2500</i>	Max Press	From	To		Tail in <i>150 SK AA2</i>
Well Connection <i>5 1/2</i>	Annulus Vol.	From	To		<i>1.51 FT 3-SK</i>
Plug Depth <i>41501</i>	Packer Depth	From	To		<i>2.6361 SK 14.8#</i>
Time	Casing Pressure	Tubing Pressure	Bbls. Pumped	Rate	Service Log
<i>400</i>					<i>Arrive On Location</i>
<i>430</i>					<i>Setup, Make Rig Up</i>
<i>1000</i>					<i>Circulate w/ Rig</i>
<i>1055</i>					<i>Hook up to BES</i>
<i>1100</i>	<i>2500</i>		<i>1</i>	<i>1</i>	<i>Pressure Test</i>
<i>1110</i>	<i>325</i>		<i>5</i>	<i>5</i>	<i>Pump Water Spacer</i>
<i>1115</i>	<i>300</i>		<i>12</i>	<i>5</i>	<i>Pump Super Flush</i>
<i>1120</i>	<i>275</i>		<i>5</i>	<i>5</i>	<i>Pump Water Spacer</i>
<i>1125</i>	<i>250</i>		<i>40</i>	<i>5</i>	<i>Pump Cement @ 14.8</i>
<i>1135</i>					<i>Drop Plug - Wash Up</i>
<i>1140</i>	<i>1000</i>		<i>107.4</i>	<i>6</i>	<i>Displace 60 bbls MUD</i>
<i>1200</i>	<i>1500</i>			<i>2</i>	<i>Slow Down - Land Plug</i>
<i>1210</i>	<i>800</i>		<i>.1</i>	<i>.1</i>	<i>OPEN TOOL</i>
<i>1230</i>					<i>Circulate w/ Rig 4 hours</i>
<i>1600</i>	<i>0</i>		<i>12</i>	<i>2</i>	<i>Plug Rat & Mouse Holes</i>
<i>1700</i>	<i>300</i>		<i>171</i>	<i>6</i>	<i>Pump Lead cement @ 11.4#</i>
<i>1730</i>	<i>250</i>		<i>17</i>	<i>5</i>	<i>Pump Tail cement @ 14.8#</i>
<i>1740</i>					<i>Drop Plug - Wash Up</i>
<i>1745</i>	<i>400</i>		<i>46</i>	<i>6</i>	<i>Displace</i>
<i>1755</i>	<i>900</i>		<i>10</i>	<i>2</i>	<i>Slow Down</i>
<i>1800</i>	<i>2200</i>		<i>4</i>	<i>2.5</i>	<i>Land Plug - Close DV Tool</i>
					<i>Sub Complete</i>
			<i>27462</i>		
Service Units	<i>78938</i>	<i>70877-19570</i>	<i>30464-37547</i>	<i>30463-19566</i>	
Driver Names	<i>Jerry</i>	<i>Ricardo</i>	<i>Norma</i>	<i>David</i>	

ty
Customer Representative

Serg Beata
Station Manager

Jerry Chavez
Cementer

1st stage
5 1/2" DV LONG STRING



2ND STAGE
5 1/2" DI COMB STRING

