

GEOLOGIC REPORT

DAVID J. GOLDAK

WICHITA, KANSAS
Scale 1:240 (5"=100') Imperial
Measured Depth Log

Well Name: Schroder #2-14
Location: Section 14 - T17S - R33W
License Number: API: 15-171-21054
Spud Date: 06 / 17 / 2014
Surface Coordinates: 2280' FNL and 1900' FWL
NE - SW - SE - NW
Region: Scott Co., KS
Drilling Completed: 06 / 24 / 2014
Bottom Hole Coordinates:
Ground Elevation (ft): 3019' K.B. Elevation (ft): 3030'
Logged Interval (ft): 3700' To: 4790' Total Depth (ft): 4790'
Formation: Mississippian - St Louis
Type of Drilling Fluid: Chemical - Mud-Co

Printed by MUD.LOG from WellSight Systems 1-800-447-1534 www.WellSight.com

OPERATOR

Company: Stelbar Oil Corporation
Address: 1625 N. Waterfront Pkwy., Suite 200
Wichita, Kansas 67206-6602

GEOLOGIST

Name: David J. Goldak
Company: D. J. GOLDAK, INC.
Address: 155 N. Market, Suite 710
Wichita, Kansas 67202

General Info

CONTRACTOR: Sterling Drilling, Rig #2

BIT RECORD:

No.	Size	Make	Jets	Out	Feet	Hours
1	12-1/4	JZ-HAOTC	3-14s	313	313	2.25
2	7-7/8	JZ-HAIP	?	410	97	1.25
3	7-7/8	Ulterra-U516M	5-15s	4790	4380	50.50

SURVEYS: 313'-0.75, 4032'-1.25, 4670'-0.75

GENERAL DRILLING & PUMP INFORMATION:

Drilling with 10,000-16,000 lbs on bit and 80-90 RPM.
Drilling with 7 stands of collars (6.25"x2.25"): 431.27'
Pumping 58-64 S/M; 9.1-9.9 B/M; 800-1000 psi at standpipe.

Daily Status

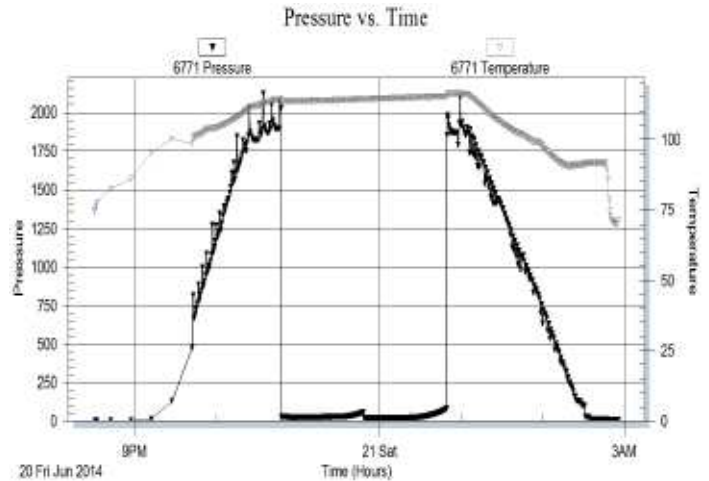
06/17/14 - Spud at 9:00 PM; Set 8-5/8" csg at 308'
06/18/14 - 313' WOC; DP at 11:30 AM; Bit trip at 410'
06/19/14 - 1,930' Drilling; Displace mud @ 3,404'
06/20/14 - 3,754' Drilling; DST #1 @ 4,032'
06/21/14 - 4,040' Drilling; DST #2 @ 4,372'
06/22/14 - 4,372' CTCH; DST #3 @ 4,444'
06/23/14 - 4,630' Drilling; DST #4 @ 4,670'
06/24/14 - 4,742' Drilling; RTD 4,790' @ 9:00 AM; Log in PM

DST #1: 4,012' - 4,032' (LKC "B")
30" - 30" - 30" - 30"

IF: Weak surface blow, died in 15 minutes
ISI: No blow back
FF: No blow
FSI: No blow back

RECOVERY: 1' Total Fluid, consisting of:
1' Mud (100% M)
Sampler: Did not run

SIP: 59-82; FP: 22-26, 18-21; HP: 2024-1984; BHT: 116

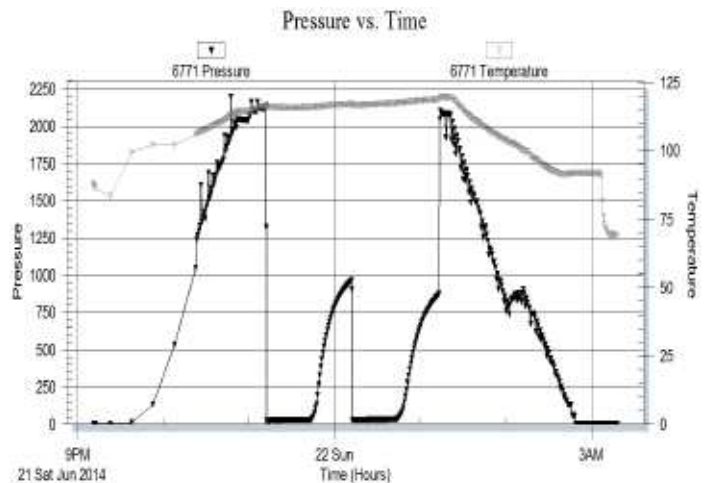


DST #2: 4,332' - 4,372' (LKC "L")
30" - 30" - 30" - 30"

IF: Surface blow, died in 15 minutes
ISI: No blow back
FF: No blow
FSI: No blow back

RECOVERY: 5' Total Fluid, consisting of:
5' OSM (100% M w/ oil spots)
Sampler: 2000 ml OSM @ 520 psi

SIP: 970-876; FP: 23-31, 28-33; HP: 2129-2099; BHT: 119

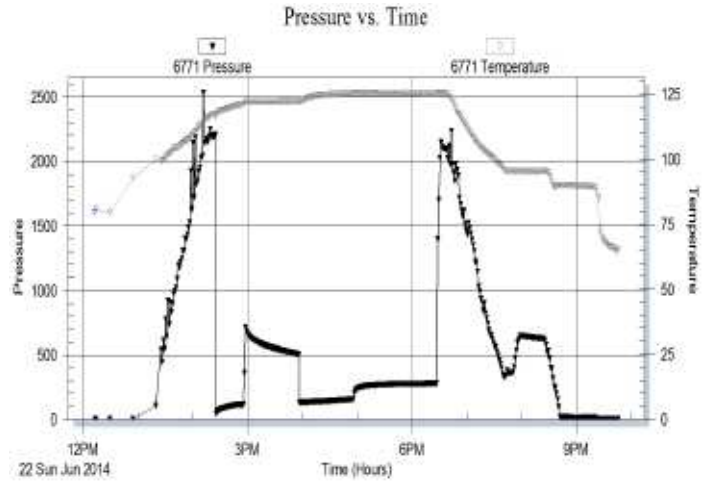


DST #3: 4,419' - 4,444' (Marmaton)
 30" - 60" - 60" - 90"

F: Fair blow building to BOB in 12 minutes
ISI: Surface blow back in 2 minutes
FF: Fair blow building to BOB in 15 minutes
FSI: Surface blow back building to 1 inch

RECOVERY: 806' GIP & 372' TF, consisting of:
 31' CGO (30% G, 70% O); Oil gravity: 35 API
 217' SMC GO (50% G, 40% O, 10% M)
 124' MCGO (40% G, 40% O, 20% M)
Sampler: 1.3 CFG, 900 ml O & 200 ml M @ 230 psi

SIP: 506-278; FP: 43-111, 129-154; HP: 2203-2147;
BHT: 125; ISIP not valid due to plugging?

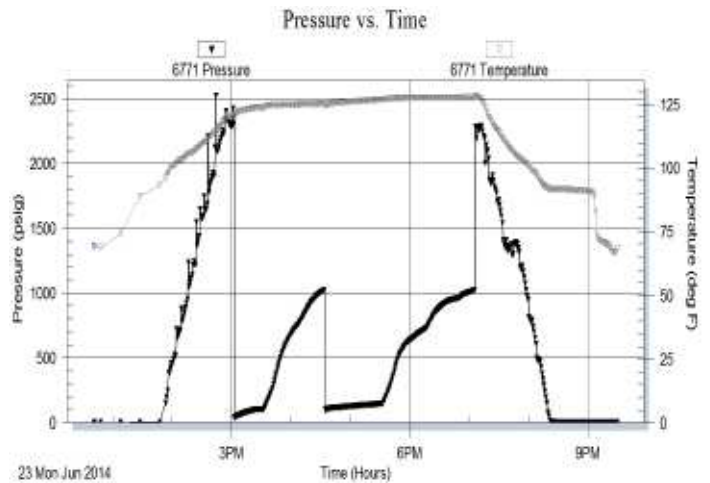


DST #4: 4,604' - 4,670' (Johnson Zone)
 30" - 60" - 60" - 90"


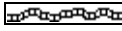
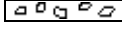
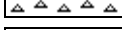


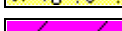

IF: Good blow building to BOB in 5 minutes
ISI: Blow back building to 3 inches
FF: Good blow building to BOB in 2 minutes
FSI: Blow back building to 5 inches





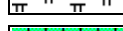

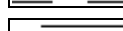

RECOVERY: 1565' GIP & 355' TF, consisting of:
 107' GOCM (20% G, 30% O, 50% M)
 124' GMCO (30% G, 60% O, 10% M)
 62' CGO (30% G, 70% O); Oil gravity: 30 API
 62' SMC GO (55% G, 40% O, 5% M)
Sampler: 0.7 CFG, 1450 ml O & Tr M @ 620 psi

SIP: 1025-1022; FP: 36-104, 95-148; HP: 2347-2284; BHT: 128

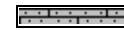


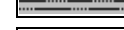




ROCK TYPES

-  Anhy
-  Bent
-  Brec
-  Cht
-  Clyst
-  Coal
-  Congl
-  Dol

-  Gyp
-  Igne
-  Lmst
-  Meta
-  Mrlst
-  Salt
-  Shale
-  Shcol

-  Shgy
-  Sltst
-  Ss
-  Till
-  Carb sh
-  Dol
-  Dtd
-  Gry sh

-  Sandylms
-  Shale
-  Sltstn
-  Shlyslts
-  Sltysch
-  Lms

ACCESSORIES

MINERAL

- Anhy
- Arggrn
- Arg
- Bent
- Bit
- Brecfrag
- Calc
- Carb
- Chtdk
- Chtlt
- Dol
- Feldspar
- Ferrpel
- Ferr
- Glau
- Gyp
- Hvymin
- Kaol
- Marl
- Minxl
- Nodule
- Phos
- Pyr

- Salt
- Sandy
- Silt
- Sil
- Sulphur
- Tuff
- Chlorite
- Dol
- Sand
- Sltly

FOSSIL

- Algae
- Amph
- Belm
- Bioclst
- Brach
- Bryozoa
- Cephal
- Coral
- Crin
- Echin
- Fish
- Foram

- Fossil
- Gastro
- Oolite
- Ostra
- Pelec
- Pellet
- Pisolite
- Plant
- Strom
- Fuss
- Oomold

STRINGER

- Anhy
- Arg
- Bent
- Coal
- Dol
- Gyp
- Ls
- Mrst
- Sltstrg
- Ssstrg
- Carbsh

- Clystn
- Dol
- Grysh
- Gryslt
- Lms
- Sandylms
- Sh
- Sltstn

TEXTURE

- Boundst
- Chalky
- Cryxln
- Earthy
- Finexln
- Grainst
- Lithogr
- Microxln
- Mudst
- Packst
- Wackest

OTHER SYMBOLS

POROSITY TYPE

- Earthy
- Fenest
- Fracture
- Inter
- Moldic
- Organic
- Pinpoint
- Vuggy

SORTING

- Well
- Moderate
- Poor

ROUNDING

- Rounded
- Subrnd
- Subang
- Angular

OIL SHOWS

- Even
- Spotted
- Ques
- Dead
- Gas show

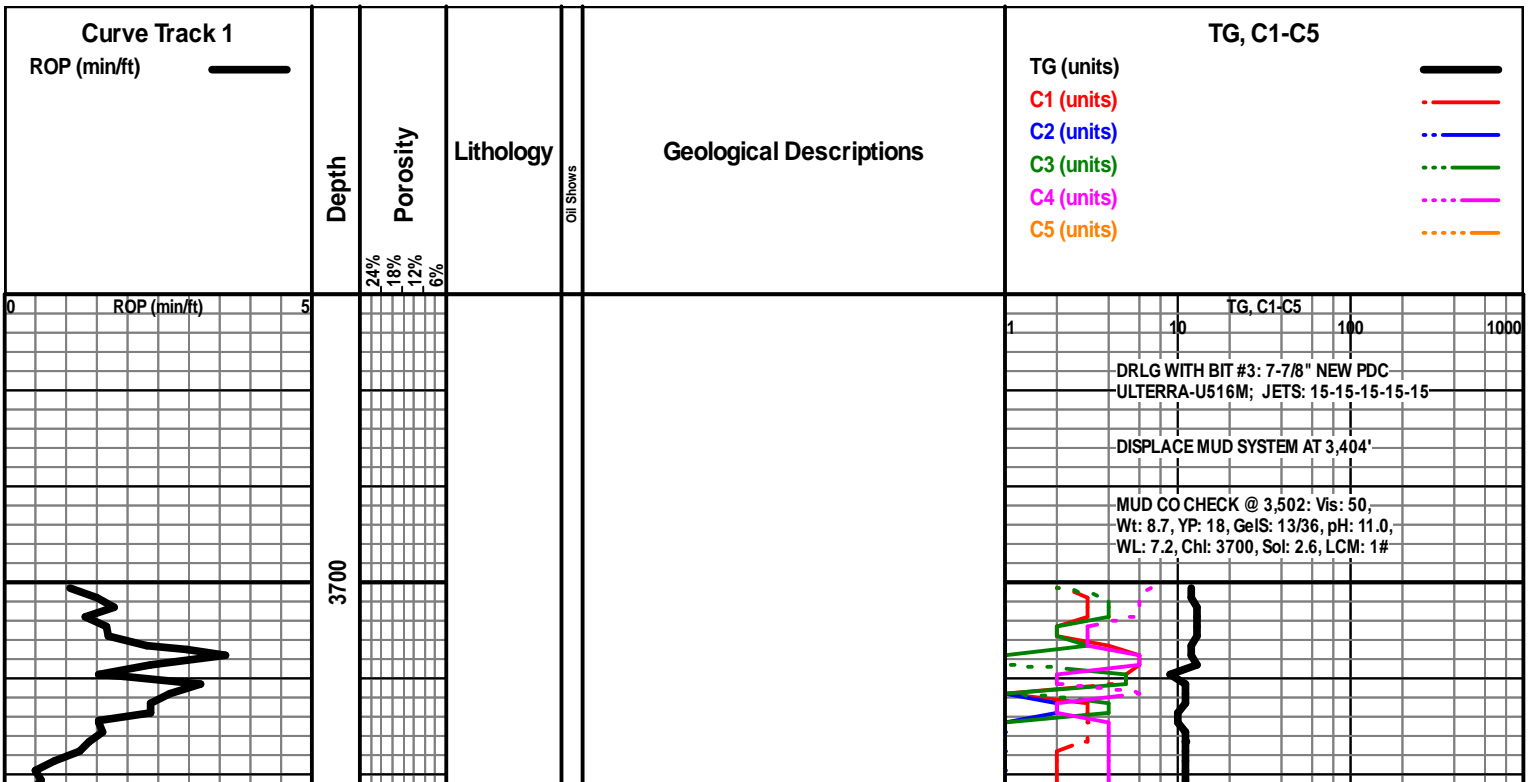
INTERVALS

- Core
- Dst

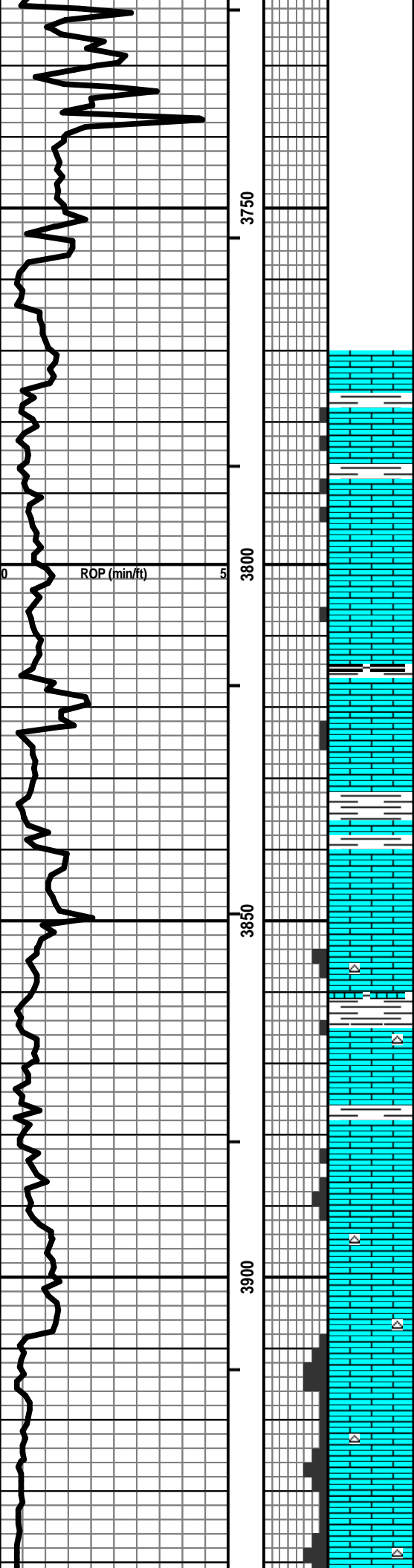
- Dst_1_t
- Dst_1_b
- Dst

EVENTS

- Rft
- Sidewall
- Conn



Vis: 47, Wt: 8.9
LCM: 1#



LS - CRM / TAN / GY, VF / F XLN, FOSS IN PT, SCAT P
INTXLN POR, SUBCHKY IN PT, NS

LS - CRM / TAN / SCAT BRN, MOT IN PT, VF / F XLN,
FOSS, TR P INTPART POR, SCATCHKY, NS

LS - CRM / TAN, F XLN, SL FOSS, SCAT PINTXLN POR,
SUBCHKY / CHKY IN PT, NS W / SCAT SH - GY / SCAT
BLK

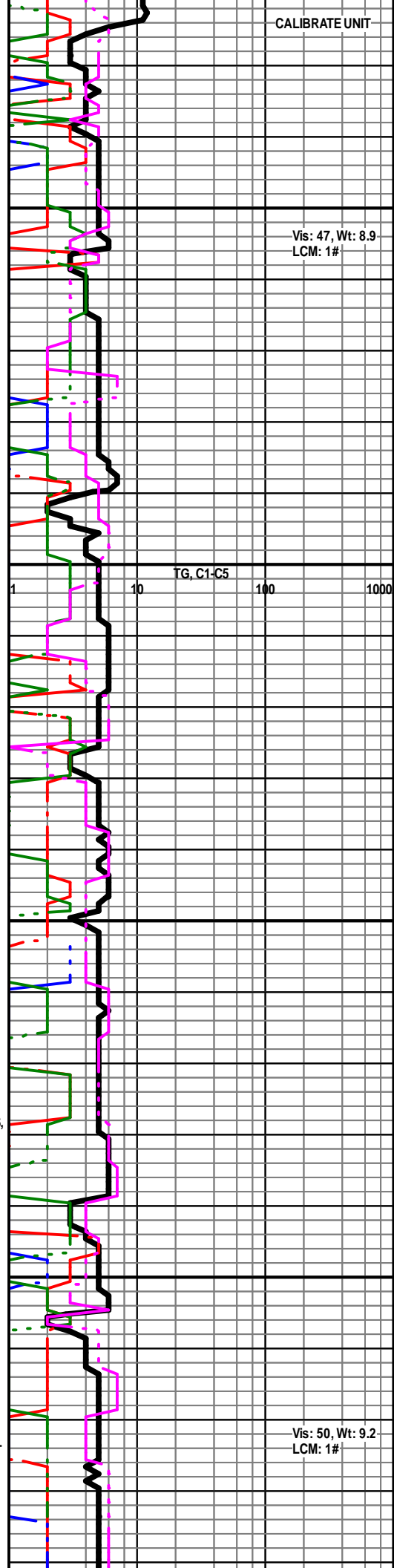
LS - TAN / BRN, VF / F XLN, FOSS IN PT, PRED DNS, NS

LS - CRM / TAN, VF / F XLN, FOSS IN PT, SCAT P / TR F
INTXLN + FOSSMOLD POR, TR CHT, NS

LS - CRM / LT GY / TAN, MOT IN PT, VF / F XLN, SL FOSS,
P / F INTXLN + PPT POR IN PT, CHKY IN PT, NS

LS - TAN / BRN / GY, PRED VF XLN, FOSS IN PT, TR POR
AA, PRED DNS, NS W / TR CHT - LT / MED GY

LS - CRM / TAN / SCAT LT GY, F XLN, SL FOSS, F / G PPT
+ INTXLN POR, CHKY IN PT, NS W / SCAT CHT - LT GY /
WHT



Vis: 50, Wt: 9.2
LCM: 1#

HEEBNER
3946 (-916)

CFS @ 3955'

TORONTO
3962 (-932)

LANSING
3985 (-955)

LS - ASABOVE W/ SH - BLK, CARB W/ LS - TAN / BRN,
VF / F XLN, DNS, NS W/ SCAT SH + SLTST - LT GY / GRN

LS - CRM / TAN, VF / F XLN, SL FOSS, SCAT F / G
INTXLN POR, TR PPT POR, SUBCHKY IN PT, NS W/ CHT
- WHT / LT GY

LS - CRM / WHT, F / VF XLN, SL OOL + FOSS, P / G PPT +
INTXLN POR, TR VUG POR, CHKY IN PT, NS W/ CHT -
WHT / LT GY

LS - V SIMILAR TO ABOVE, P / NO VIS POR, CHKY IN PT,
PRED DNS, NS

LS - CRM / TAN, F XLN, OOL, SCAT F / TR G INTOOL /
INTXLN POR, TR P OOM POR, SSFO, TR GB, V FT
ODOR, SPTY STN, G FLUOR + CUT

LS - ASABOVE, PRED DNS, NS

LS - CRM / WHT / SCAT TAN, VF / F XLN, OOL IN PT, SL
FOSS, P / F INTOOL / INTXLN POR, TR PPT POR,
SUBCHKY IN PT, TR DEAD STN, NSFO, NO ODOR

LS - ASABOVE, PRED DNS TO CHKY IN PT, NS W/
SCAT SH - DK GY / BLK

LS - CRM / TAN / SCAT GY, PRED VF / F XLN, TR M XLN,
SCAT OOL + FOSS, PRED DNS, NS W/ SCAT SH - LT /
DK GY

LS - CRM / WHT, MOT IN PT, VF / F XLN, SL FOSS, TR
OOL, P / SCAT F INTXLN + PPT POR IN PT, TR P VUG
POR, TR DEAD STN, NSFO, NO ODOR

LS - CRM / WHT / SCAT TAN, VF / F XLN, OOL IN PT, TR
FOSS, TR P INTXLN POR, SUBCHKY IN PT, NS

LS - CRM / TAN / SCAT WHT, VF / F XLN, OOL + SL FOSS
IN PT, P / F INTXLN + PPT POR IN PT, TR P VUG POR,
SCAT SUBCHKY, NS W/ CHT - WHT / LT GY

DST #1: 4,012'-4,032' (LKC "B")
30" - 30" - 30" - 30"

IF: Surface blow, died in 15 min
IS: No blow back
FF: No blow
FSI: No blow back

RECOVERY: 1' Total Fluid:
1' Mud (100% M)
Sampler: Did not run

SIP: 59-82 HP: 2024-1984
FP: 22-26, 18-21 BHT: 116

TG, C1-C5 100 1000

Vis: 52, Wt: 9.2
LCM: 1#

PIPE STRAP @ 4,032': LONG 1.18'

Vis: 49, Wt: 9.3,
YP: 17, GeIS: 13/36,
pH: 9.0, WL: 8.8,
Chi: 5000, Sol: 6.9,
LCM: 1#

A
0 ROP (min/ft) 5

B
CFS @ 4032'

C

D

E

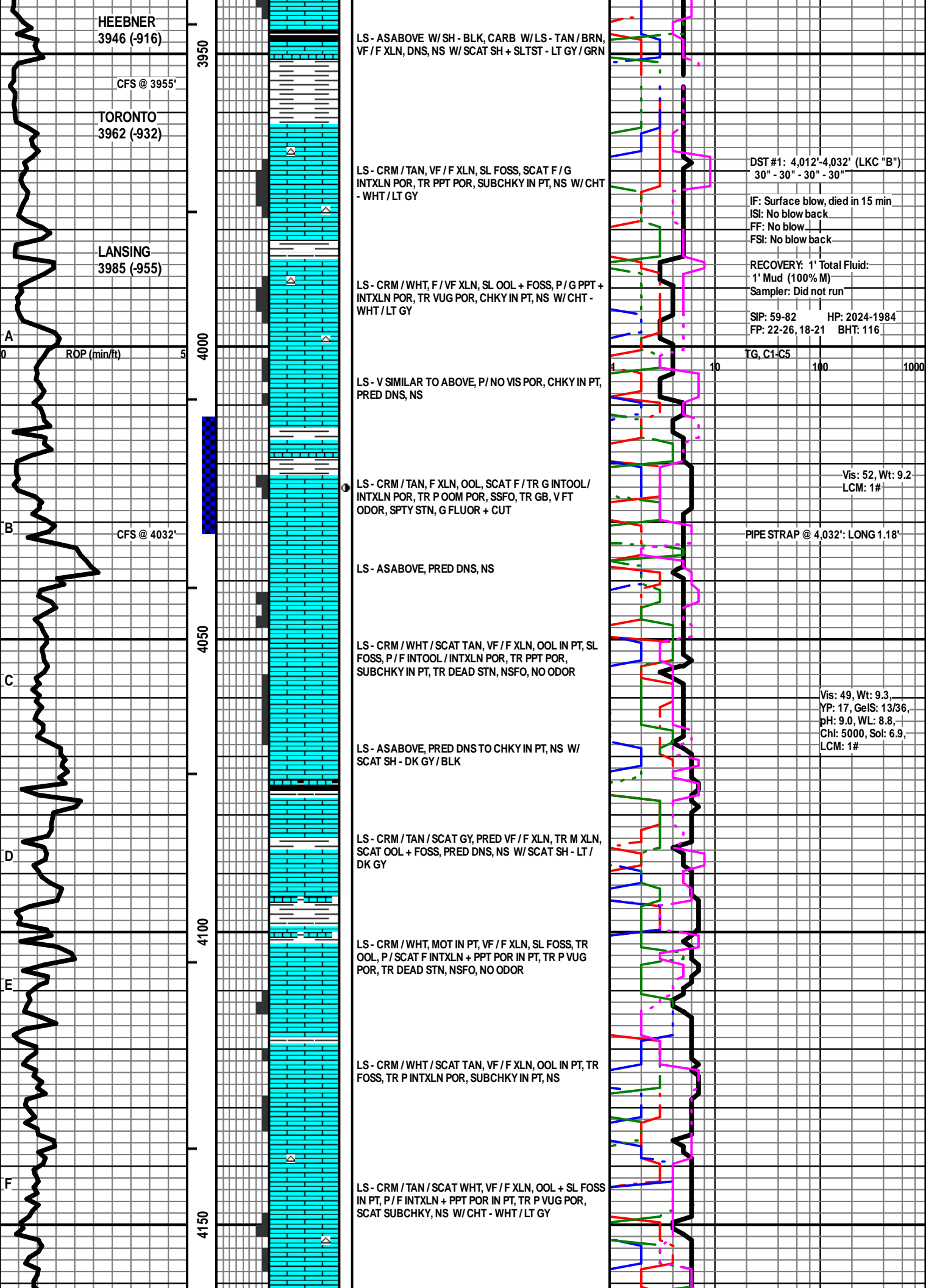
F

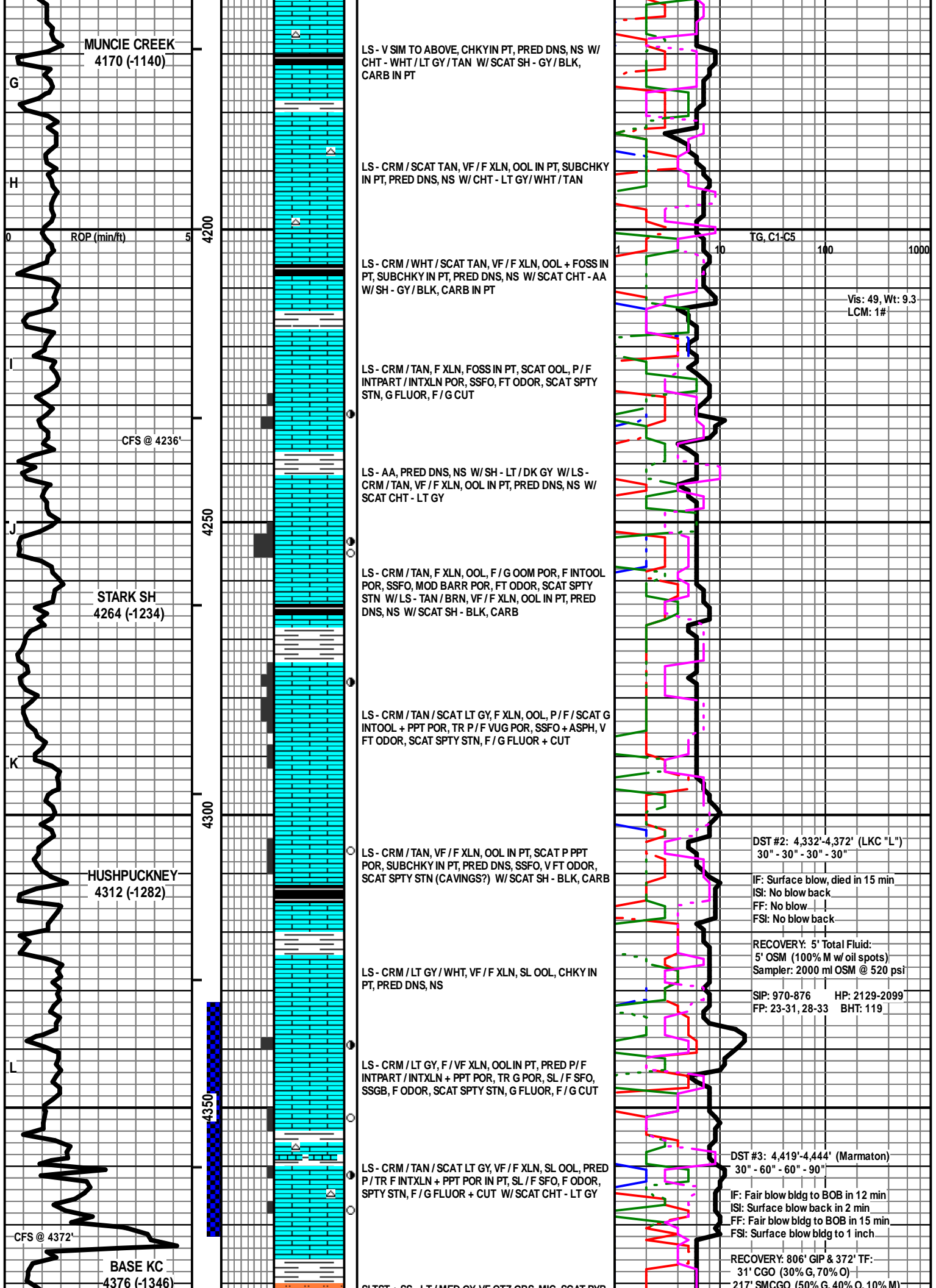
4000

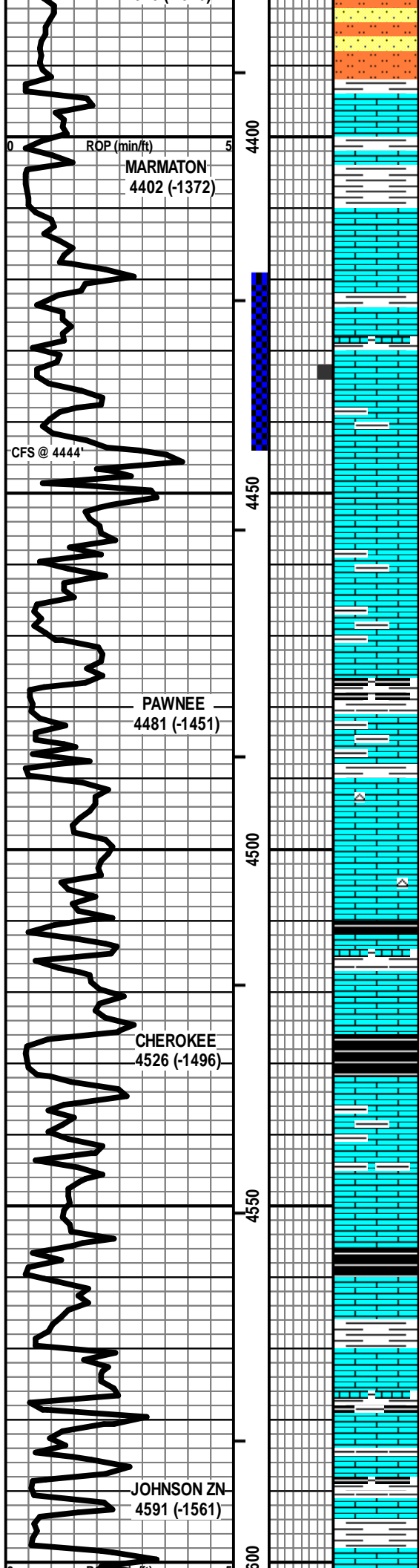
4050

4100

4150







SLTST + SS-LT / MED GY, VF QTZ GRSS, MIC, SCAT PYR,
 P / F INTGR POR, NS W / SH - GY / SCAT GRN + RED

LS - TAN / SCAT BRN, F / SCAT M XLN, FOSS IN PT,
 PRED DNS, NS W / SH - LT / DK GY

LS - CRM / TAN, VF / F XLN, SCAT CRYPTO XLN, SL
 FOSS, SUBCHKY IN PT, PRED DNS, TR SPTY DEAD
 STN, NSFO, NO ODOR

LS - V SIM TO ABOVE W / SEV PCS LS - CRM / TAN,
 PRED F / M XLN, SCAT C XLN, FOSS IN PT, P / G VUG +
 PPT + INTXNLN POR, SL / G SFO, TR GB, NO ODOR, SPTY
 / SAT STN, G FLUOR + CUT (POR + SHOW ~1% OF
 SAMPLE)

LS - TAN / SCAT CRM, PRED F XLN, SL FOSS, SCAT
 SUBCHKY, PRED DNS, NS

LS - TAN / CRM / SCAT BRN, F / VF XLN, SL FOSS, SCAT
 SUBCHKY, PRED DNS, NS W / SH - MED / DK GY

LS - CRM / TAN, VF / F XLN, SL FOSS, SCAT CHKY, PRED
 DNS, NS W / SCAT CHT - TAN / GY W / SH - GY / BLK,
 CARB IN PT

LS - ASABOVE, PRED DNS, NS

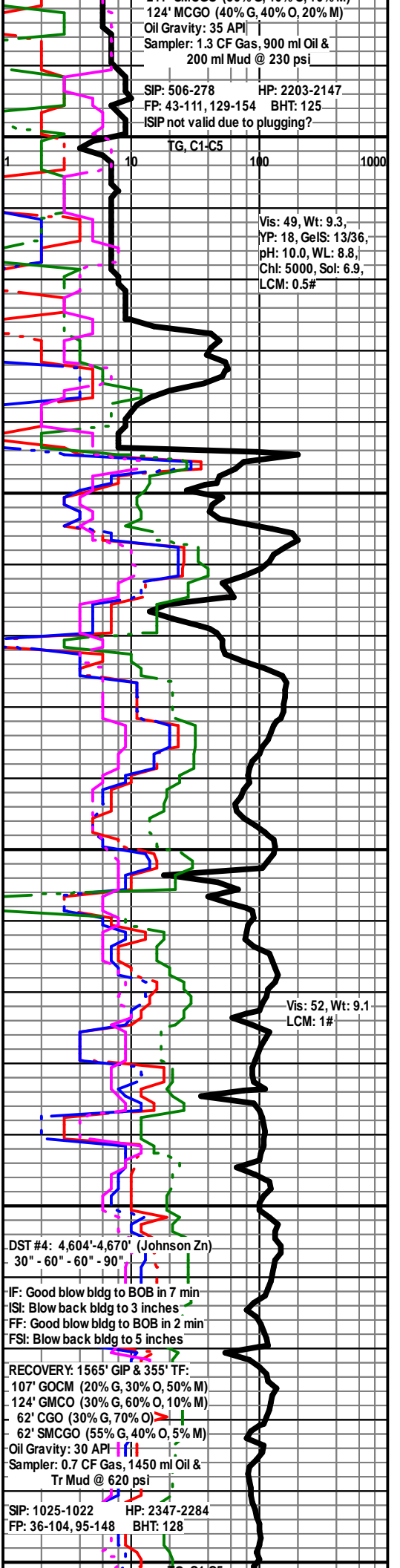
LS - CRM / TAN, VF / F XLN, FOSS IN PT, SCAT CHKY,
 PRED DNS, NS W / SH - BLK, CARB

SH - GY / BLK, CARB IN PT W / LS - CRM / BRN, MOT IN
 PT, VF / F XLN / M REXLN CALC, TR FOSS, PRED DNS,
 NS

LS - CRM / TAN / SCAT BRN, VF / F XLN, FOSS IN PT,
 PRED DNS, NS W / SH - BLK, CARB

LS - CRM / SCAT TAN, VF / F XLN, FOSS IN PT, CHKY IN
 PT, PRED DNS, NS W / SH - LT / DK GY

LS - CRM / TAN / SCAT BRN, VF / F XLN, SCAT M REXLN
 CALC, SL FOSS, SCAT SUBCHKY, PRED DNS, NS W /
 SH - GY / GRN / SCAT BLK



124' MCGO (40% G, 40% O, 20% M)
 Oil Gravity: 35 API
 Sampler: 1.3 CF Gas, 900 ml Oil &
 200 ml Mud @ 230 psi

SIP: 506-278 HP: 2203-2147
 FP: 43-111, 129-154 BHT: 125
 ISIP not valid due to plugging?

TG, C1-C5

Vis: 49, Wt: 9.3,
 YP: 18, GeIS: 13/36,
 pH: 10.0, WL: 8.8,
 Chl: 5000, Sol: 6.9,
 LCM: 0.5#

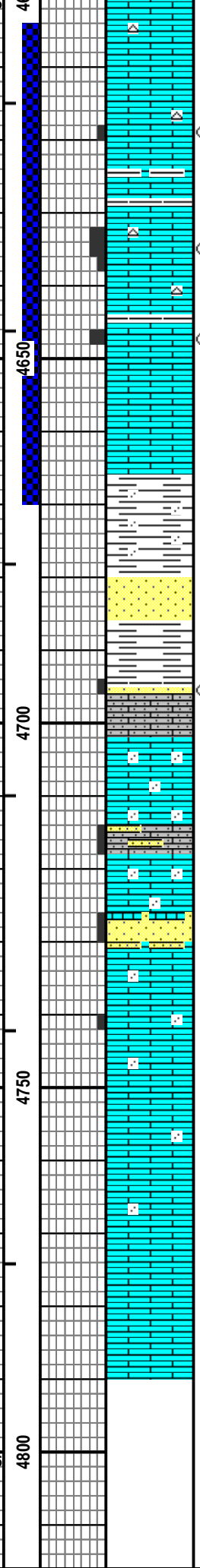
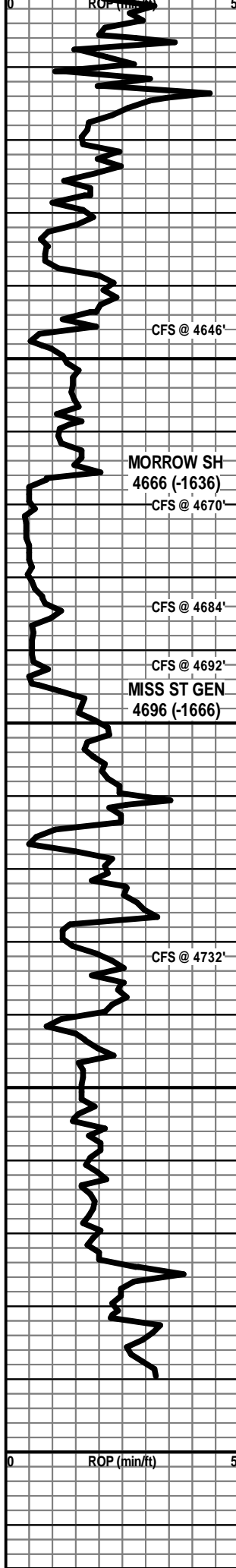
Vis: 52, Wt: 9.1
 LCM: 1#

DST #4: 4,604'-4,670' (Johnson Zn)
 30" - 60" - 60" - 90"

IF: Good blow bldg to BOB in 7 min
 IS: Blow back bldg to 3 inches
 FF: Good blow bldg to BOB in 2 min
 FSI: Blow back bldg to 5 inches

RECOVERY: 1565' GIP & 355' TF:
 107' GOCM (20% G, 30% O, 50% M)
 124' GMCO (30% G, 60% O, 10% M)
 62' CGO (30% G, 70% O)
 62' SMC GO (55% G, 40% O, 5% M)
 Oil Gravity: 30 API
 Sampler: 0.7 CF Gas, 1450 ml Oil &
 Tr Mud @ 620 psi

SIP: 1025-1022 HP: 2347-2284
 FP: 36-104, 95-148 BHT: 128



LS - CRM / TAN / BRN, VF / F XLN, SL FOSS + OOL, SUBCKY IN PT, TR P INTXLN + PPT POR, PRED DNS, TR GB, TR SPTY STN, NSFO, NO ODOR W/ SCAT CHT - TAN

LS - CRM / WHT / SCAT TAN, F XLN, FOSS IN PT, P / F INTXLN + PPT POR, SL / F SFO, F / G SGB, G ODOR, SPTY / TR SAT STN, G FLUOR + CUT W/ SCAT CHT - LT GY / CRM / TAN

LS - CRM / TAN / SCAT WHT, F / VF XLN, FOSS IN PT, SUBCHKY IN PT, SCAT P / F INTXLN + PPT POR, TR VUG POR, SCAT SL / F SFO, TR GB, G ODOR, SCAT SPTY / TR SAT STN, G FLUOR + CUT

LS - AS ABOVE, PRED DNS, NS W/ SH - GY / SCAT GRN W/ SCAT SS CLSTRS - LT GY / GRN, SLT / VF QTZ GR, W SRTD, SA / SR, CLAYEY / GLAUC IN PT, SL FRI IN PT, NS

SH - MED / DK GY / GRN, SLTY IN PT W/ MOD AMT SS CLSTRS - LT / MED GY / GRN, SLT / VF QTZ GR, W SRTD, SA / SR, SIL CEM, SL FRI IN PT, SCAT P / NO VIS POR, NS, NO ODOR

PRED SH - LT / MED GY / GRN W/ SCAT SS CLSTRS - AS ABOVE, V SLTY IN PT, NS

AS ABOVE W/ TR SS CLSTRS - LT GY, VF / M GR, P SRTD, SA / R, SL / MOD CALC, PINTGR POR, SSFO, SPTY STN, F / G F + C W/ LS - WHT / CRM, AREN, VF / TR M QTZ GR, SL OOL, TR P INTGR POR + SL / F SFO, SPTY STN, F / G F + C, NO ODOR

LS - CRM / TAN / WHT, VF / F XLN, AREN IN PT, OOL IN PT, SCAT PINTPART POR, CHKY IN PT, NS, NO ODOR

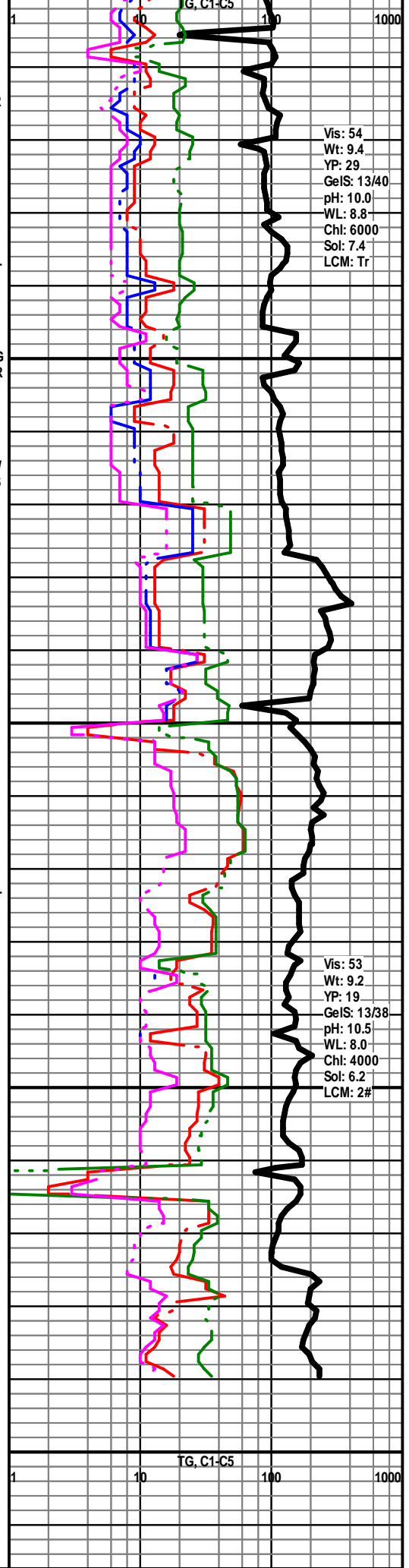
ABNT SS CLSTRS - LT / MED GY / SCAT GRN, VF / SCAT F GR, W SRTD, SA / R, V CALC, SL / MOD CHKY, P INTGR POR IN PT, NS, NO ODOR W/ LS - AS ABOVE

LS - CRM / TAN / SCAT WHT, VF / F XLN, OOL IN PT, AREN IN PT, SCAT CHKY, TR P INTXLN / INTOL POR, PRED DNS, NS

LS - CRM / WHT / SCAT TAN, VF / F XLN, OOL IN PT, AREN IN PT, PRED DNS, NS

LS - CRM / TAN / SCAT WHT, VF / F XLN, SCAT OOL, PRED DNS, NS

TOTAL DEPTH 4790 (-1760)
06/24/14 @ 9:00 AM



Vis: 54
Wt: 9.4
YP: 29
GeIS: 13/40
pH: 10.0
WL: 8.8
Chl: 6000
Sol: 7.4
LCM: Tr

Vis: 53
Wt: 9.2
YP: 19
GeIS: 13/38
pH: 10.5
WL: 8.0
Chl: 4000
Sol: 6.2
LCM: 2#