

LITHOLOGY STRIP LOG

WellSight Systems

Scale 1:240 (5"=100') Imperial
Measured Depth Log

Well Name: ZIMMER #1-20
Location: SEC 20-19S-14W
License Number: 15-165-22064
Spud Date: 7/14
Surface Coordinates: 2240' FNL, 330' FWL,
70' N of C SW SW NW

Region: BARTON, CO
Drilling Completed: 7/14

Bottom Hole Coordinates:
Ground Elevation (ft): 1893' K.B. Elevation (ft): 1901'
Logged Interval (ft): To: Total Depth (ft):
Formation:
Type of Drilling Fluid: Starch/Chemical

Printed by WellSight Log Viewer from WellSight Systems 1-800-447-1534 www.WellSight.com

OPERATOR

Company: F. G. Holl Company L.L.C.
Address: 9431 E. Central ST #100
Wichita, KS 67206

GEOLOGIST


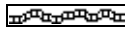
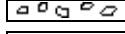
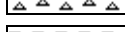
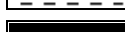

Name: Ryan Greenbaum
Company: F. G. Holl Company, L.L.C.
Address:







Cores


DSTs





Comments

ROCK TYPES

 Anhy
 Bent
 Brec
 Cht
 Clyst
 Coal

 Congl
 Dol
 Gyp
 Igne
 Lmst
 Meta

 Mrlst
 Salt
 Shale
 Shcol
 Shgy
 Slst

 Ss
 Till
 Blk shale
 Cng

ACCESSORIES

MINERAL

- Anhy
- Arggrn
- Arg
- Bent
- Bit
- Brecfrag
- Calc
- Carb
- Chtdk
- Chtlt
- Dol
- Feldspar
- Ferrpel
- Ferr
- Glau
- Gyp
- Hvymin
- Kaol
- Marl

- Minxl
- Nodule
- Phos
- Pyr
- Salt
- Sandy
- Silt
- Sil
- Sulphur
- Tuff

FOSSIL

- Algae
- Amph
- Belm
- Bioclst
- Brach
- Bryozoa
- Cephal
- Coral

- Crin
- Echin
- Fish
- Foram
- Fossil
- Gastro
- Oolite
- Ostra
- Pelec
- Pellet
- Pisolite
- Plant
- Strom

STRINGER

- Anhy
- Arg
- Bent
- Coal
- Dol

- Gyp
- Ls
- Mrst
- Sltstrg
- Ssstrg

TEXTURE

- Boundst
- Chalky
- Cryxln
- Earthy
- Finexln
- Grainst
- Lithogr
- Microxln
- Mudst
- Packst
- Wackst

OTHER SYMBOLS

POROSITY

- Earthy
- Fenest
- Fracture
- Inter
- Moldic
- Organic
- Pinpoint
- Vuggy

SORTING

- Well
- Moderate
- Poor

ROUNDING

- Rounded
- Subrnd
- Subang

- Angular

OIL SHOW

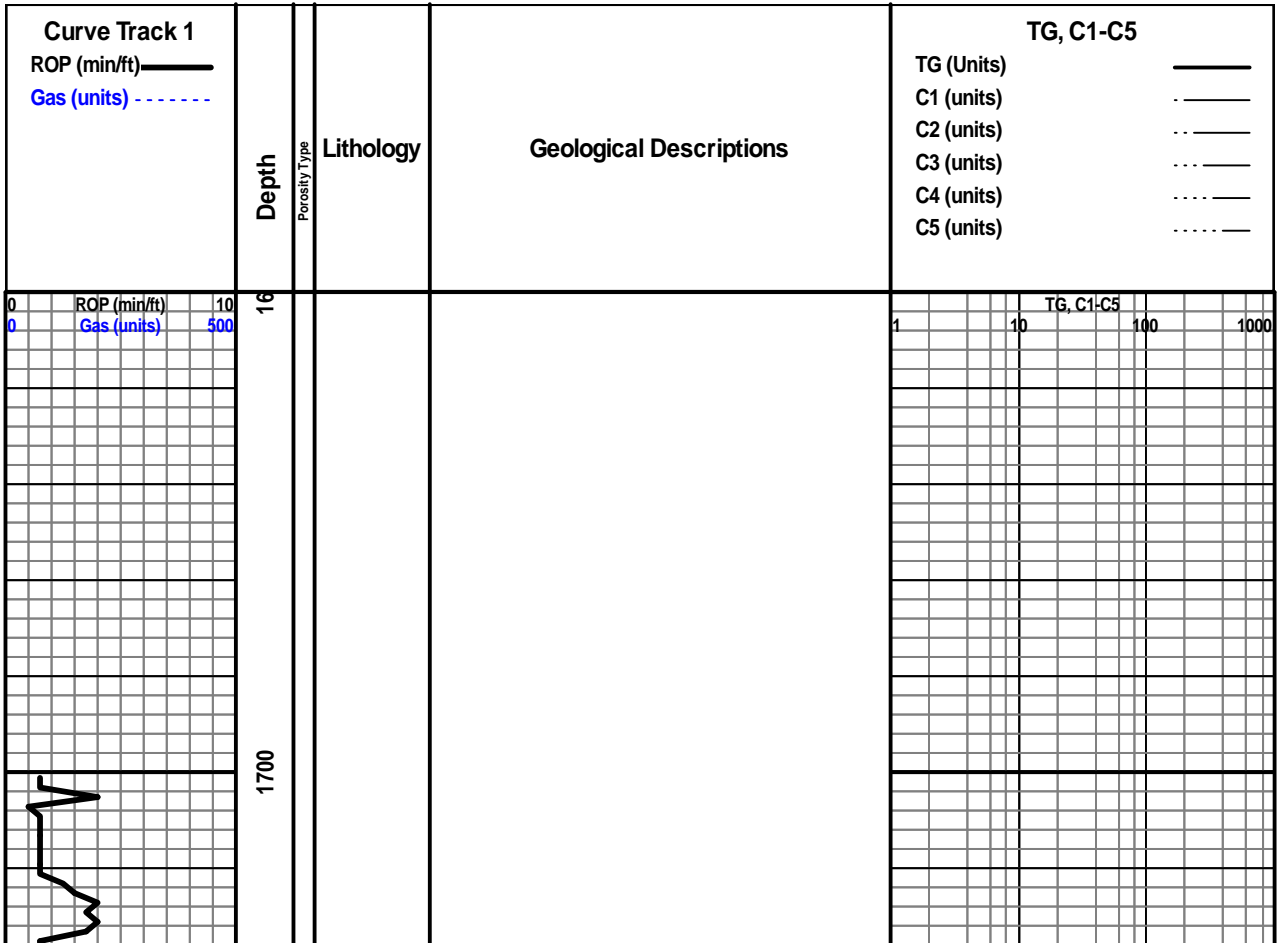
- Even
- Spotted
- Ques
- Dead

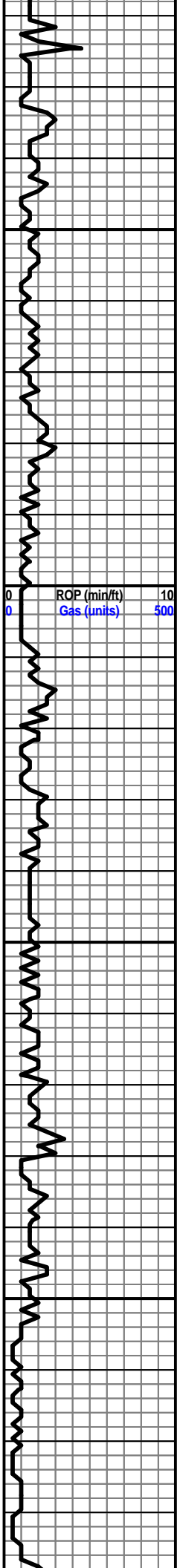
INTERVAL

- Core
- Dst

EVENT

- Rft
- Sidewall





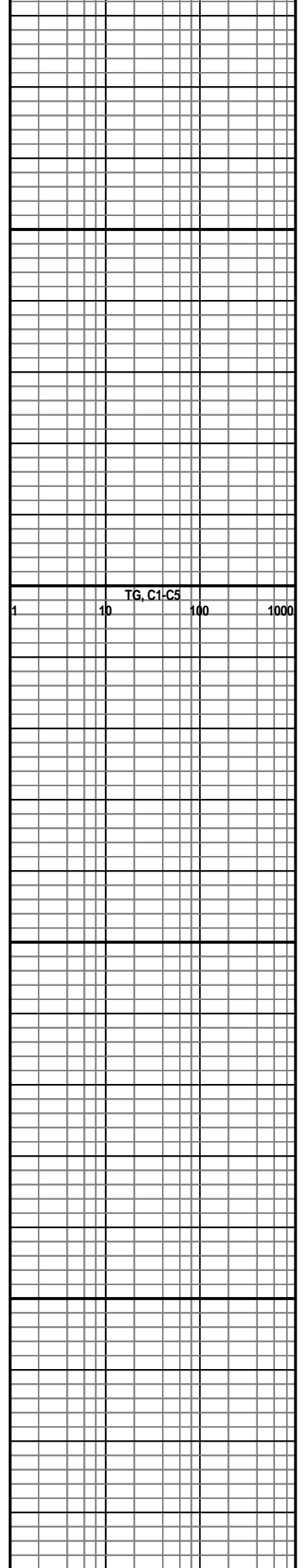
1750

1800

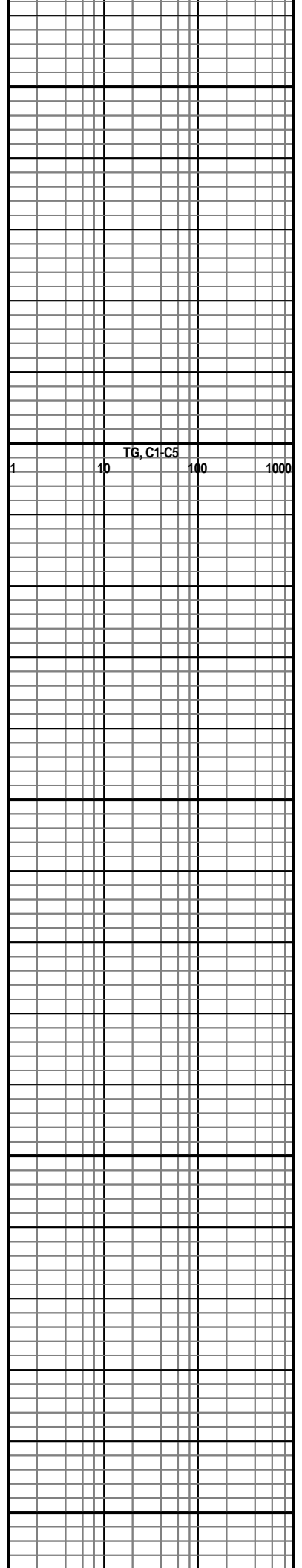
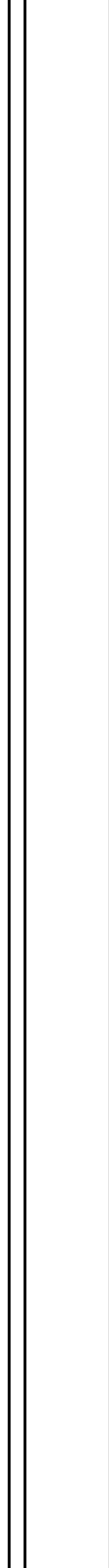
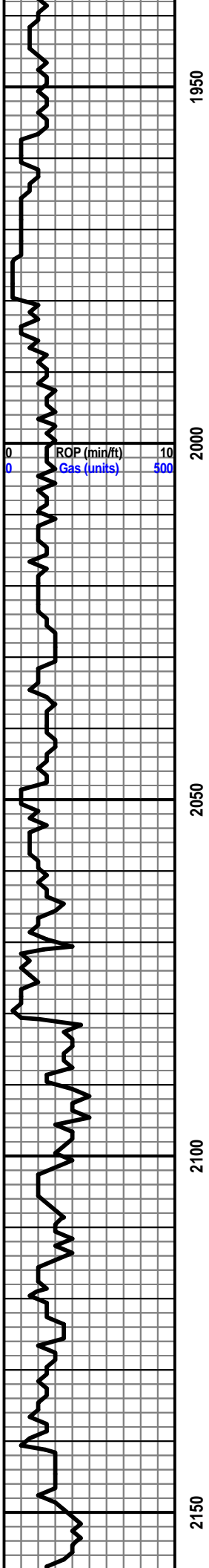
1850

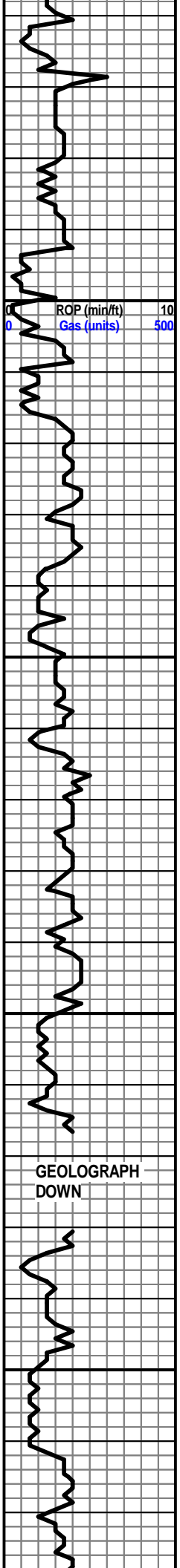
1900

ROP (min/ft) 10
Gas (units) 500



TG, C1-C5
1 10 100 1000





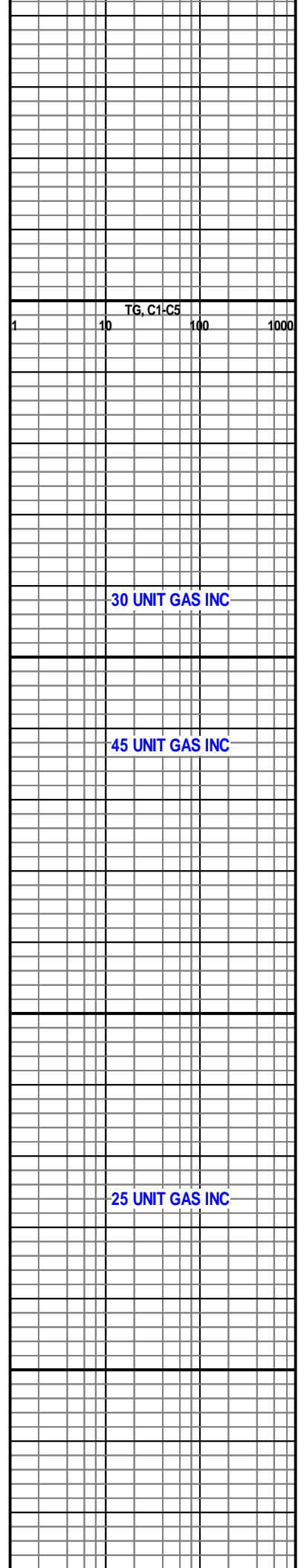
2200

2250

2300

2350

GEOLOGRAPH
DOWN

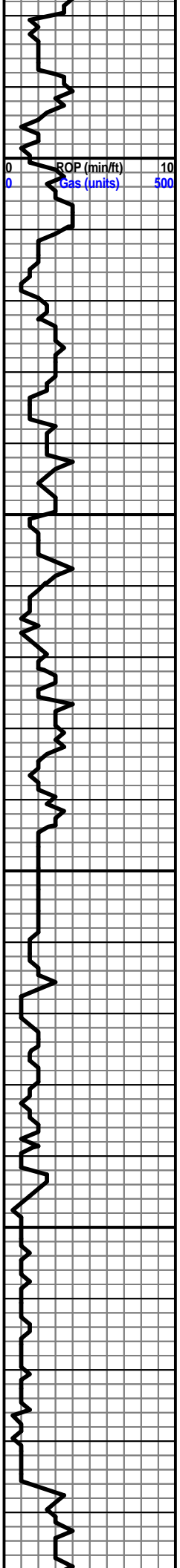


TG, C1-C5
1 10 100 1000

30 UNIT GAS INC

45 UNIT GAS INC

25 UNIT GAS INC

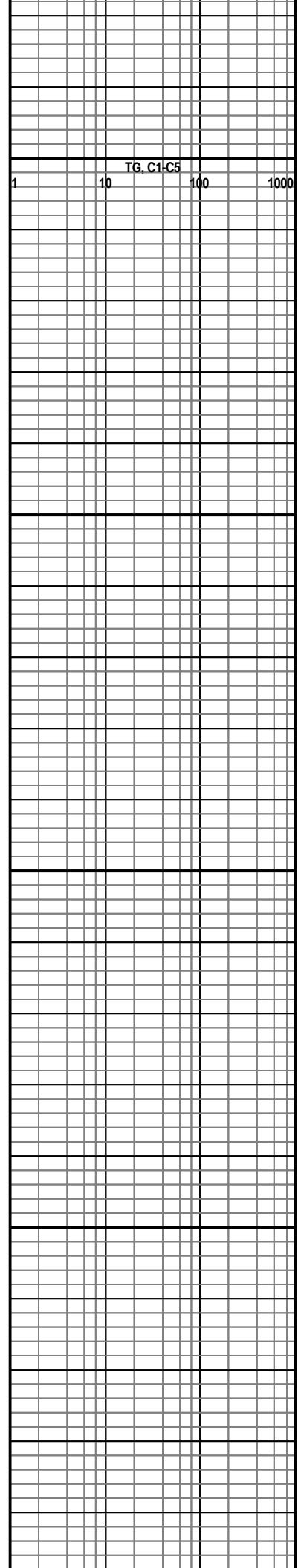


2400

2450

2500

2550



TG, C1-C5

1

10

100

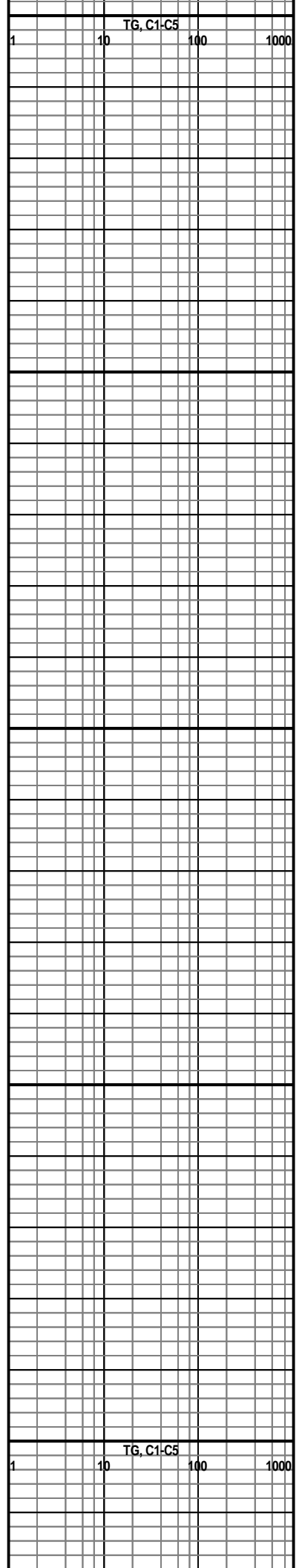
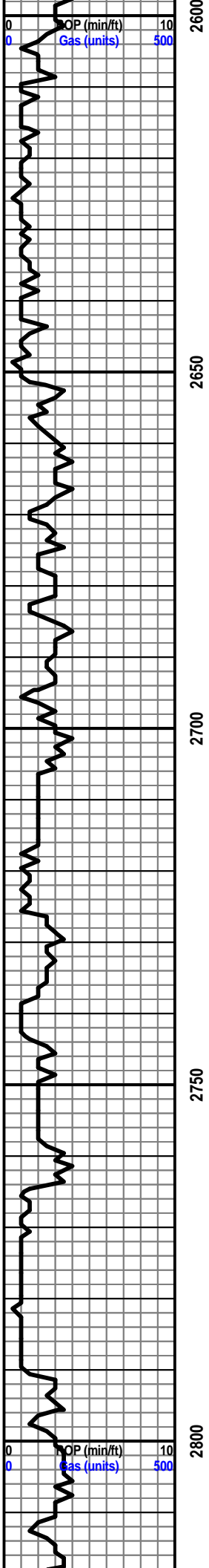
1000

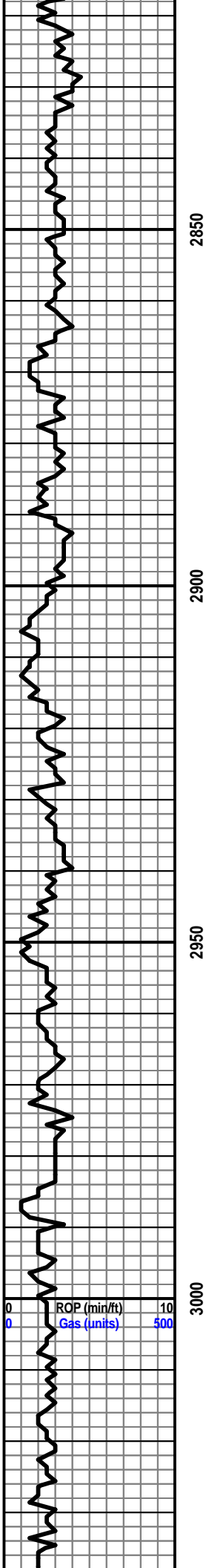
2400

2450

2500

2550





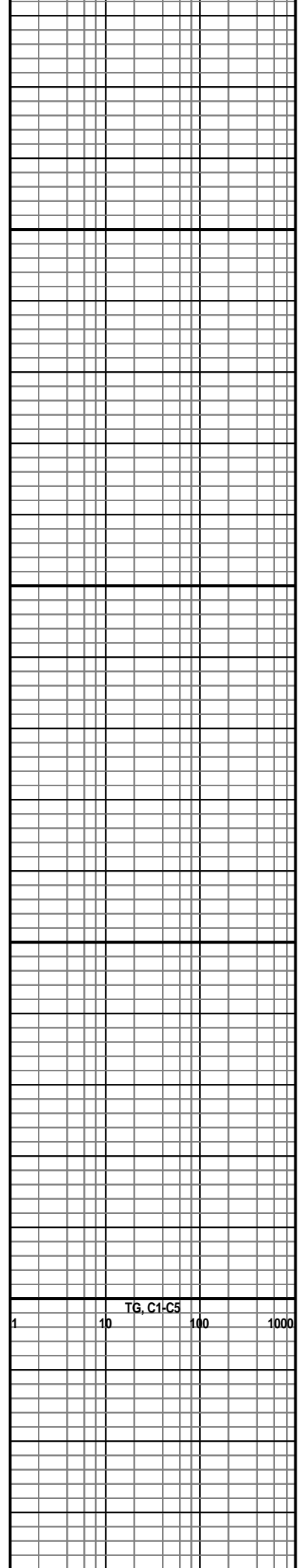
2850

2900

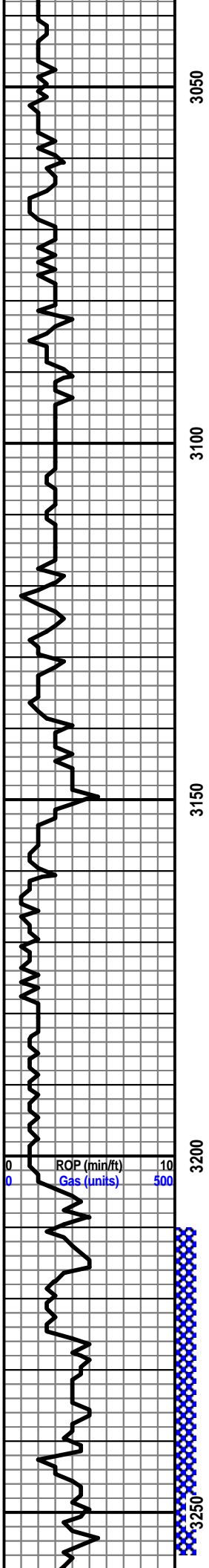
2950

3000

0 ROP (min/ft) 10
0 Gas (units) 500



TG, C1-C5
1 10 100 1000



3050

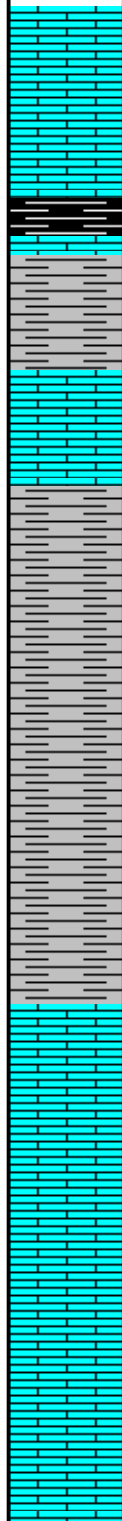
3100

3150

3200

3250

ROP (min/ft) 10
Gas (units) 500



HEEBNER 3120' (-1219')

SH-BLK

SH-GRY-LT GRY, SFT-BLKY-PLTY, WXY-SLTY

BROWN LS 3204' (-1303')

LS-BRN-GRY/TAN, F GRN, XLN, HD, DNS

LKC

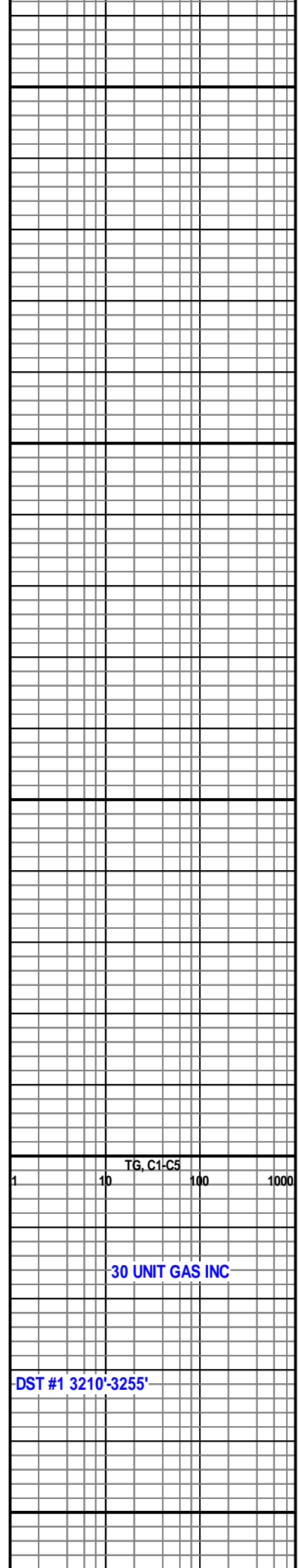
LS-LT TAN-OFF WHT, F GRN, XLN, HD-BRTL,
PRTLY DNS, TR-FR INTRXLN POR, SHW OIL,
SHW GAS, FNT ODR

LS-V LT TAN-GRY, F GRN, XLN, HD-BRTL

LS-GRY-LT TAN, F GRN, XLN, MSTLY HD

LS-LT TAN, F GRN, XLN, HD-BRTL

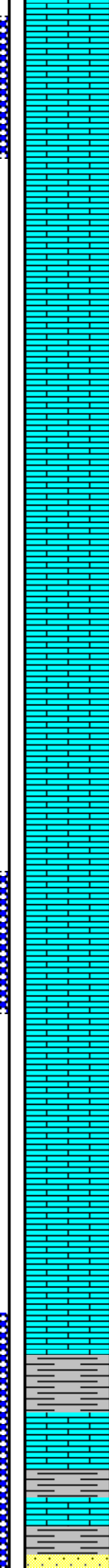
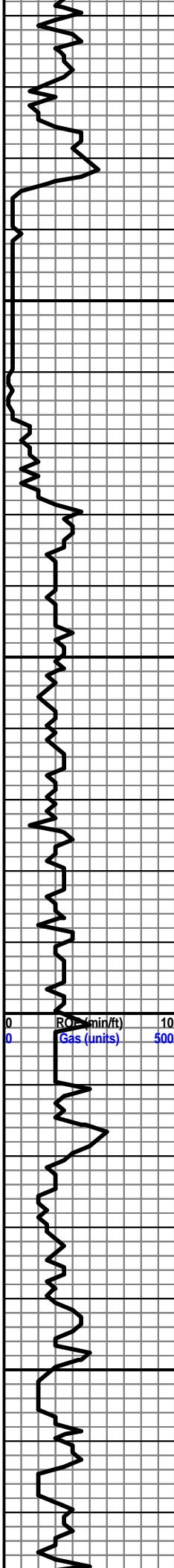
LS-TAN-OFF WHT, F GRN, XLN, HD-BRTL



TG, C1-C5
1 10 100 1000

30 UNIT GAS INC

DST #1 3210'-3255'



LS-LT TAN, F GRN, XLN, HD-BRTL, PRTLY OOL, TR SHW FREE OIL, V FNT ODR

LS-LT TAN-OFF WHT, F GRN, XLN-SLTLY CHLKY, MSTLY BRTL, BLK STND, PR-FR INTRXLN POR, TR SHW OIL, FR ODR

LS-TAN-LT TAN, F GRN, XLN, MSTLY BRTL, PR-FR OOLM POR, TR SHW OIL, FNT ODR

LS-LT GRY/TAN, F GRN, XLN, BRTL, PR-FR OOLM POR

LS-LT TAN, F GRN, XLN, MSTLY BRLT, MSTLY OOL, PR-FR OOLM POR

LS-DK TAN-LT TAN, F GRN, XLN, HD, DNS

LS-TAN-LT TAN, F GRN, XLN, MSTLY HD, PRTLY DNS

LS-TAN-LT TAN, F GRN, XLN, HD-BRTL, OOL, TR PYR

LS-TAN-LT TAN, F GRN, XLN, HD-BRTL, OOL, PR-FR INTRXLN POR, TR SHW OIL

LS-TAN-LT TAN-GRY, F GRN, XLN, HD-BRTL, PRTLY OOL, PR-FR INTRXLN POR, BLK STND, TR SHW GAS

LS-LT TAN, F GRN, XLN, MSTLY HD, DNS

LS-LT TAN, F GRN, XLN, HD-BRTL, PRTLY DNS, TR SHW OIL

LS-TAN-LT TAN, F GRN, XLN-SLTLY CHLKY, HD-BRTL, SMWT DNS, PRTLY OOL

LS-LT TAN-LT GRY/TAN, F GRN, XLN, HD-BRTL, PRTLY DNS

LS-TAN-LT TAN, F GRN, XLN, MSTLY HD, DNS

LS-LT TAN-LT GRY, F GRN, XLN, HD-BRTL, SMWT DNS

LS-TAN-LT TAN, F GRN, XLN-SLTLY CHLKY, HD-BRTL, PRTLY DNS

BKC 3448' (-1547')

SH-RED-GRY, BLKY

LS-TAN-LT TAN, F GRN, XLN, HD, DNS

SH-RED-GRY, BLKY-SPLNTY

SS TPNS, VE M GRN, SHR ANG SHR BND, PRTLY

80+ UNIT GAS INC

DST #2 3260'-3280'

20 UNIT GAS INC

70 UNIT GAS INC

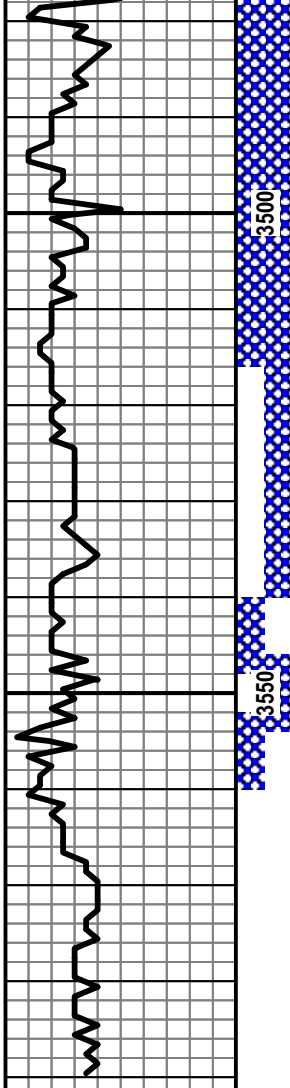
DST #3 3350'-3380'

25 UNIT GAS INC

DST #4 3380'-3400'

TG, C1-C5
1 10 100 1000

70 UNIT GAS INC



3500

3550

3600

3650

ROP (min/ft) 10
Gas (units) 500

SS-TRNS, VF-M GRN, SUB ANG-SUB RND, FRT SRTD, BLK STND, SHW GAS

DST #5 3440'-3515'

CNG SH-RED-PRPL-GRY, BLKY, W/CHRT-YLW-LT TAN,

CNG SH-RED-PRPL-GRY, BLKY-SFT, SNDY, W/CHRT-TRNS GRY

CHRT-YLW-RED-OFF WHT, PRTLY OOL

SH-RED-WHT, BLKY-SFT, SNDY, W/CHRT-TRNS GRY/TAN, W/PYR

DST #6 3448'-3540'

CNG SH-RED-GRY, BLKY-SFT, W/CHRT-OFF WHT-RED, PRTLY OOL

SS-TRNS, F-M GRN, SUB RND, PYR CMNT, SHW FREE LT OIL, FNT ODR

SS-GRY, F-M GRN, SUB RND, SHLY, TR SHW LT FREE OIL

DST #7 3540'-3547'

ARBUCKLE 3546' (-1645')
DOL-OFF WHT, M GRN, XLN, HD-BRTL, PR-FR INTRXLN POR, SHW OIL, SHW GAS, W/PYR, FNT-FR ODR

DST #8 3547'-3553'

DST #9 3541'-3553'

DOL-LT TAN-V LT GRY, F GRN, XLN,HD-BRTL, PRTLY SNDY

DST #10 3553'-3560'

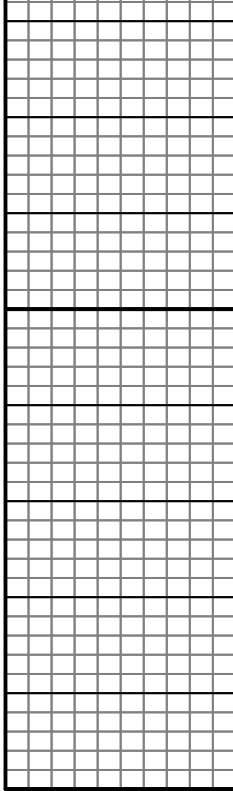
DOL-V LT GRY, F GRN, XLN, MSTLY HD, SNDY

DOL SS-V LT TAN, F GRN, SUB RND, WL SRTD, HD, SHW LT OIL, V FNT ODR

11 UNIT GAS INC

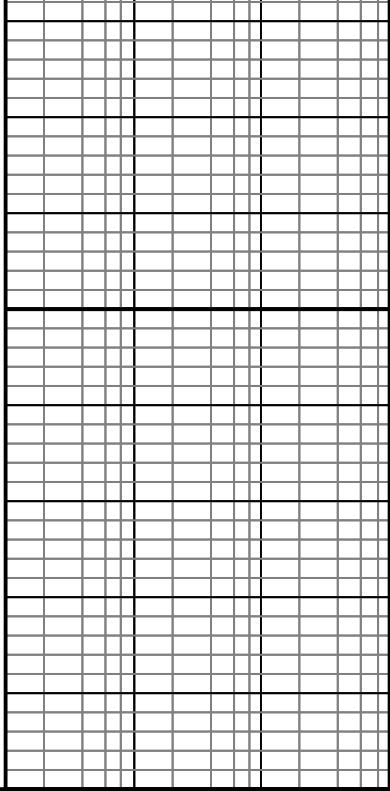
DOL SS-V LT TAN, F-L GRN, SUB RND, MSTLY HD

TG, C1-C5
1 10 100 1000

A grid pattern consisting of small squares, used for calculations or data entry.

3950

00

A grid pattern consisting of small squares, used for calculations or data entry.