

Unit Petroleum

Reno County, Kansas [NAD 83]

Section 29 T25S-R10W

Debes 32 #1H

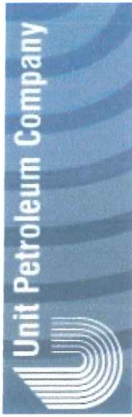
OH

Design: OH

Standard Survey Report

16 June, 2014





Unit Petroleum
 Project: Reno County, Kansas [NAD 83]
 Site: Section 29 T25S-R10W
 Well: Debes 32 #1H
 Wellbore: OH
 Design: Design #1
 Lat: 37° 50' 22.365 N
 Long: 98° 27' 8.526 W
 Pad GL: 1795.00
 KB: 14' KB @ 1809.00usft (UDI 331)



SECTION DETAILS

MD	Inc	Azi	TVD	+N/-S	+E/-W	Dleg	TFace	Vsect
0.00	0.00	0.00	0.00	0.00	0.00	0.00	0.00	0.00
3372.28	0.00	0.00	3372.28	0.00	0.00	0.00	0.00	0.00
3922.28	56.00	179.93	3841.62	0.00	0.00	0.00	244.32	244.32
4072.28	56.00	179.93	3927.66	-244.32	0.30	179.93	367.20	367.20
4362.52	89.83	179.93	4014.00	-639.63	0.78	0.00	639.63	639.63
5362.51	89.83	179.93	4017.00	-1639.62	1.98	0.00	1639.62	1639.62
5362.51	89.83	179.93	4020.00	-2639.61	3.18	0.00	2639.62	2639.62
5362.51	89.83	179.93	4023.00	-3639.61	4.38	0.00	3639.61	3639.61
8362.51	89.83	179.93	4026.99	-4639.60	5.58	0.00	4639.61	4639.61
8362.51	89.83	179.93	4026.02	-4645.50	6.00	173.14	4645.50	4645.50
8860.24	89.86	179.96	4029.00	-5137.32	6.00	0.00	5137.33	5137.33

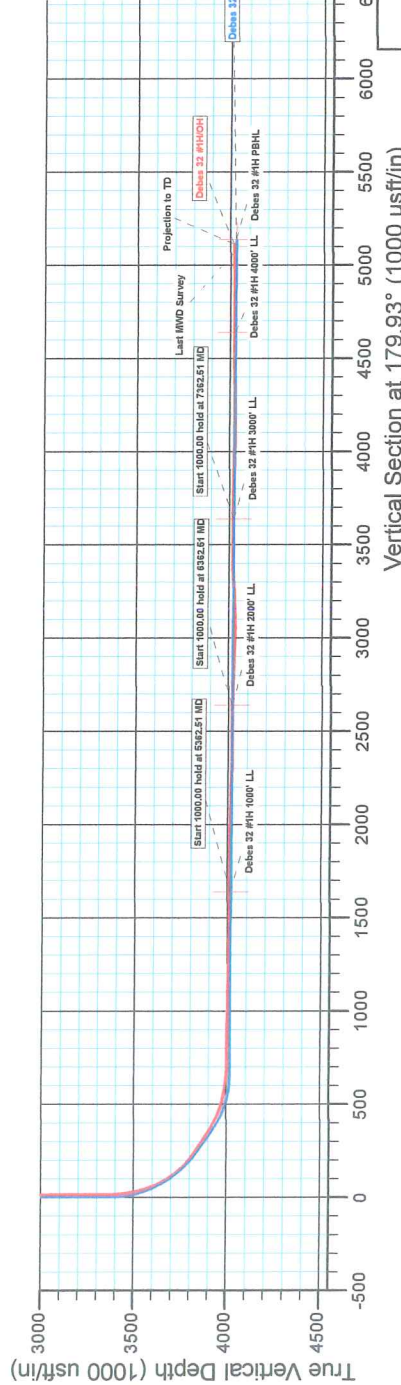
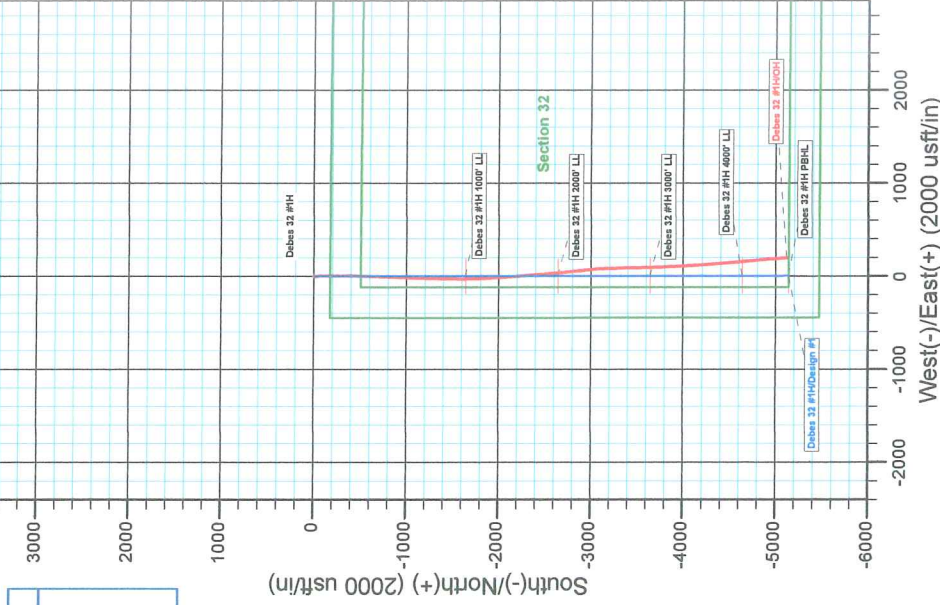
WELL DETAILS: Debes 32 #1H

+N/-S	+E/-W	Northing	Ground Level:	Latitude	Longitude	Slot
0.00	0.00	1739408.00	1795.00	37° 50' 22.365 N	98° 27' 8.526 W	

WELLBORE TARGET DETAILS (LAT/LONG)

Name	TVD	+N/-S	+E/-W	Longitude	Shape Point
Debes 32 #1H 1000' LL	4017.00	-1639.62	1.98	98° 27' 8.512 W	Point
Debes 32 #1H 2000' LL	4020.00	-2639.61	3.18	98° 27' 8.504 W	Point
Debes 32 #1H 3000' LL	4023.00	-3639.61	4.38	98° 27' 8.485 W	Point
Debes 32 #1H 4000' LL	4026.00	-4639.60	5.58	98° 27' 8.486 W	Point
Debes 32 #1H PBHL	4029.00	-5137.32	6.00	98° 27' 8.484 W	Point

NOTE: All Lease lines and Hard lines are estimates only and are subject to the customers' approval.



Vertical Section at 179.93° (1000 usft/in)

Plan: Design #1 (Debes 32 #1H/OH)

Created By: Derek Stephens Date: 6/13, June 16 2014

Company:	Unit Petroleum	Local Co-ordinate Reference:	Well Debes 32 #1H
Project:	Reno County, Kansas [NAD 83]	TVD Reference:	14' KB @ 1809.00usft (UDI 331)
Site:	Section 29 T25S-R10W	MD Reference:	14' KB @ 1809.00usft (UDI 331)
Well:	Debes 32 #1H	North Reference:	Grid
Wellbore:	OH	Survey Calculation Method:	Minimum Curvature
Design:	OH	Database:	EDM 5000.1 Single User Db

Project	Reno County, Kansas [NAD 83]		
Map System:	US State Plane 1983	System Datum:	Mean Sea Level
Geo Datum:	North American Datum 1983		
Map Zone:	Kansas Southern Zone		Using geodetic scale factor

Site	Section 29 T25S-R10W				
Site Position:		Northing:	1,739,399.00 usft	Latitude:	37° 50' 22.262 N
From:	Map	Easting:	1,328,604.00 usft	Longitude:	98° 26' 37.161 W
Position Uncertainty:	0.00 usft	Slot Radius:	13-3/16 "	Grid Convergence:	0.03 °

Well	Debes 32 #1H					
Well Position	+N/-S	0.00 usft	Northing:	1,739,408.00 usft	Latitude:	37° 50' 22.365 N
	+E/-W	0.00 usft	Easting:	1,326,088.00 usft	Longitude:	98° 27' 8.526 W
Position Uncertainty		0.00 usft	Wellhead Elevation:	usft	Ground Level:	1,795.00 usft

Wellbore	OH				
Magnetics	Model Name	Sample Date	Declination (°)	Dip Angle (°)	Field Strength (nT)
	IGRF2010	5/30/2014	4.61	65.73	52,009

Design	OH				
Audit Notes:					
Version:	1.0	Phase:	ACTUAL	Tie On Depth:	0.00
Vertical Section:	Depth From (TVD) (usft)	+N/-S (usft)	+E/-W (usft)	Direction (°)	
	0.00	0.00	0.00	179.93	

Survey Program	Date	6/16/2014			
From (usft)	To (usft)	Survey (Wellbore)	Tool Name	Description	
100.00	3,180.00	Gyro (OH)	CB-GYRO-MS	Camera based gyro multishot	
3,297.00	8,825.00	MWD (OH)	MWD	MWD - Standard	

Survey										
Measured Depth (usft)	Inclination (°)	Azimuth (°)	Vertical Depth (usft)	+N/-S (usft)	+E/-W (usft)	Vertical Section (usft)	Dogleg Rate (°/100usft)	Build Rate (°/100usft)	Turn Rate (°/100usft)	
0.00	0.00	0.00	0.00	0.00	0.00	0.00	0.00	0.00	0.00	
100.00	0.41	195.26	100.00	-0.35	-0.09	0.35	0.41	0.41	0.00	
200.00	0.27	178.98	200.00	-0.93	-0.18	0.93	0.17	-0.14	-16.28	
300.00	0.36	194.85	300.00	-1.47	-0.26	1.46	0.12	0.09	15.87	
400.00	0.42	211.36	399.99	-2.08	-0.53	2.08	0.13	0.06	16.51	
500.00	0.18	228.59	499.99	-2.50	-0.84	2.50	0.25	-0.24	17.23	
600.00	0.40	259.02	599.99	-2.67	-1.30	2.67	0.26	0.22	30.43	
700.00	0.37	222.28	699.99	-2.97	-1.86	2.97	0.24	-0.03	-36.74	
800.00	0.18	214.21	799.99	-3.34	-2.17	3.34	0.19	-0.19	-8.07	
900.00	0.35	236.34	899.99	-3.64	-2.51	3.64	0.20	0.17	22.13	

Company:	Unit Petroleum	Local Co-ordinate Reference:	Well Debes 32 #1H
Project:	Reno County, Kansas [NAD 83]	TVD Reference:	14' KB @ 1809.00usft (UDI 331)
Site:	Section 29 T25S-R10W	MD Reference:	14' KB @ 1809.00usft (UDI 331)
Well:	Debes 32 #1H	North Reference:	Grid
Wellbore:	OH	Survey Calculation Method:	Minimum Curvature
Design:	OH	Database:	EDM 5000.1 Single User Db

Survey									
Measured Depth (usft)	Inclination (°)	Azimuth (°)	Vertical Depth (usft)	+N/-S (usft)	+E/-W (usft)	Vertical Section (usft)	Dogleg Rate (°/100usft)	Build Rate (°/100usft)	Turn Rate (°/100usft)
1,000.00	0.32	240.45	999.98	-3.95	-3.01	3.95	0.04	-0.03	4.11
1,100.00	0.23	218.17	1,099.98	-4.24	-3.37	4.24	0.14	-0.09	-22.28
1,200.00	0.38	233.53	1,199.98	-4.60	-3.76	4.60	0.17	0.15	15.36
1,300.00	0.19	216.65	1,299.98	-4.93	-4.13	4.93	0.21	-0.19	-16.88
1,400.00	0.30	201.69	1,399.98	-5.31	-4.32	5.30	0.13	0.11	-14.96
1,500.00	0.36	236.07	1,499.98	-5.72	-4.68	5.72	0.20	0.06	34.38
1,600.00	0.35	218.52	1,599.98	-6.14	-5.13	6.13	0.11	-0.01	-17.55
1,700.00	0.35	220.45	1,699.97	-6.61	-5.52	6.60	0.01	0.00	1.93
1,800.00	0.48	216.99	1,799.97	-7.18	-5.97	7.17	0.13	0.13	-3.46
1,900.00	0.42	201.95	1,899.97	-7.85	-6.36	7.84	0.13	-0.06	-15.04
2,000.00	0.42	219.36	1,999.97	-8.48	-6.73	8.47	0.13	0.00	17.41
2,100.00	0.45	199.75	2,099.96	-9.13	-7.10	9.12	0.15	0.03	-19.61
2,200.00	0.43	197.21	2,199.96	-9.86	-7.34	9.85	0.03	-0.02	-2.54
2,300.00	0.50	203.84	2,299.96	-10.61	-7.63	10.61	0.09	0.07	6.63
2,400.00	0.52	184.67	2,399.95	-11.47	-7.84	11.46	0.17	0.02	-19.17
2,500.00	0.41	174.20	2,499.95	-12.27	-7.84	12.26	0.14	-0.11	-10.47
2,600.00	0.13	135.82	2,599.95	-12.71	-7.73	12.70	0.32	-0.28	-38.38
2,700.00	0.23	93.90	2,699.95	-12.81	-7.45	12.80	0.16	0.10	-41.92
2,800.00	0.37	93.41	2,799.95	-12.84	-6.92	12.83	0.14	0.14	-0.49
2,900.00	0.44	93.55	2,899.94	-12.88	-6.22	12.87	0.07	0.07	0.14
3,000.00	0.46	102.28	2,999.94	-12.99	-5.44	12.98	0.07	0.02	8.73
3,100.00	0.52	134.90	3,099.94	-13.40	-4.73	13.39	0.28	0.06	32.62
3,180.00	0.46	137.74	3,179.94	-13.89	-4.26	13.89	0.08	-0.08	3.55
3,297.00	0.40	132.20	3,296.93	-14.51	-3.64	14.51	0.06	-0.05	-4.74
3,329.00	0.30	155.90	3,328.93	-14.66	-3.52	14.66	0.54	-0.31	74.06
3,361.00	0.70	145.40	3,360.93	-14.90	-3.38	14.90	1.28	1.25	-32.81
3,393.00	2.60	154.50	3,392.92	-15.72	-2.95	15.71	5.98	5.94	28.44
3,425.00	5.40	163.20	3,424.83	-17.81	-2.20	17.81	8.93	8.75	27.19
3,457.00	8.40	165.80	3,456.60	-21.52	-1.20	21.52	9.42	9.38	8.13
3,488.00	10.80	168.10	3,487.16	-26.56	-0.04	26.56	7.84	7.74	7.42
3,520.00	13.30	172.30	3,518.46	-33.14	1.07	33.14	8.27	7.81	13.13
3,552.00	16.00	176.80	3,549.41	-41.20	1.81	41.20	9.15	8.44	14.06
3,583.00	19.30	178.90	3,578.95	-50.59	2.15	50.59	10.84	10.65	6.77
3,615.00	23.00	178.50	3,608.79	-62.13	2.41	62.13	11.57	11.56	-1.25
3,646.00	26.70	178.30	3,636.91	-75.15	2.78	75.15	11.94	11.94	-0.65
3,678.00	30.40	179.20	3,665.02	-90.43	3.10	90.44	11.64	11.56	2.81
3,710.00	33.80	180.90	3,692.12	-107.43	3.08	107.44	10.99	10.63	5.31
3,742.00	36.70	181.30	3,718.25	-125.90	2.72	125.90	9.09	9.06	1.25
3,772.00	40.40	180.30	3,741.71	-144.59	2.47	144.59	12.51	12.33	-3.33
3,804.00	44.80	179.70	3,765.26	-166.24	2.47	166.25	13.81	13.75	-1.88
3,836.00	49.00	179.40	3,787.12	-189.60	2.66	189.61	13.14	13.13	-0.94
3,868.00	53.00	179.90	3,807.25	-214.47	2.81	214.47	12.56	12.50	1.56
3,899.00	55.80	180.20	3,825.30	-239.67	2.78	239.67	9.07	9.03	0.97

Company:	Unit Petroleum	Local Co-ordinate Reference:	Well Debes 32 #1H
Project:	Reno County, Kansas [NAD 83]	TVD Reference:	14' KB @ 1809.00usft (UDI 331)
Site:	Section 29 T25S-R10W	MD Reference:	14' KB @ 1809.00usft (UDI 331)
Well:	Debes 32 #1H	North Reference:	Grid
Wellbore:	OH	Survey Calculation Method:	Minimum Curvature
Design:	OH	Database:	EDM 5000.1 Single User Db

Survey										
Measured Depth (usft)	Inclination (°)	Azimuth (°)	Vertical Depth (usft)	+N/-S (usft)	+E/-W (usft)	Vertical Section (usft)	Dogleg Rate (°/100usft)	Build Rate (°/100usft)	Turn Rate (°/100usft)	
3,930.00	56.10	180.00	3,842.66	-265.35	2.74	265.36	1.11	0.97	-0.65	
3,962.00	56.30	179.90	3,860.46	-291.95	2.76	291.95	0.68	0.63	-0.31	
3,993.00	56.60	179.80	3,877.59	-317.78	2.83	317.78	1.00	0.97	-0.32	
4,025.00	56.80	179.90	3,895.16	-344.53	2.90	344.53	0.68	0.63	0.31	
4,060.00	58.20	180.30	3,913.96	-374.04	2.85	374.05	4.11	4.00	1.14	
4,089.00	61.80	180.80	3,928.46	-399.15	2.60	399.16	12.50	12.41	1.72	
4,121.00	65.60	181.40	3,942.64	-427.83	2.05	427.83	11.99	11.88	1.88	
4,152.00	68.30	182.00	3,954.77	-456.34	1.20	456.34	8.89	8.71	1.94	
4,184.00	71.20	181.90	3,965.85	-486.34	0.18	486.34	9.07	9.06	-0.31	
4,216.00	74.30	181.30	3,975.34	-516.89	-0.67	516.89	9.85	9.69	-1.88	
4,248.00	77.10	181.50	3,983.24	-547.88	-1.43	547.88	8.77	8.75	0.63	
4,279.00	80.00	181.80	3,989.39	-578.25	-2.30	578.25	9.40	9.35	0.97	
4,310.00	82.90	181.90	3,994.00	-608.89	-3.29	608.88	9.36	9.35	0.32	
4,339.00	86.40	182.00	3,996.71	-637.74	-4.28	637.73	12.07	12.07	0.34	
4,417.00	89.40	182.20	3,999.56	-715.62	-7.13	715.62	3.85	3.85	0.26	
4,480.00	89.60	182.00	4,000.11	-778.58	-9.44	778.57	0.45	0.32	-0.32	
4,542.00	89.60	181.90	4,000.55	-840.54	-11.55	840.53	0.16	0.00	-0.16	
4,605.00	90.00	181.90	4,000.77	-903.51	-13.64	903.49	0.63	0.63	0.00	
4,665.00	89.10	182.00	4,001.24	-963.47	-15.68	963.45	1.51	-1.50	0.17	
4,726.00	89.40	182.00	4,002.04	-1,024.43	-17.81	1,024.41	0.49	0.49	0.00	
4,789.00	89.60	181.80	4,002.59	-1,087.39	-19.90	1,087.37	0.45	0.32	-0.32	
4,851.00	89.20	181.80	4,003.23	-1,149.36	-21.84	1,149.33	0.65	-0.65	0.00	
4,913.00	88.30	181.60	4,004.59	-1,211.31	-23.68	1,211.29	1.49	-1.45	-0.32	
4,976.00	88.40	181.20	4,006.40	-1,274.27	-25.22	1,274.24	0.65	0.16	-0.63	
5,038.00	88.90	181.10	4,007.86	-1,336.24	-26.47	1,336.21	0.82	0.81	-0.16	
5,100.00	89.80	180.90	4,008.56	-1,398.22	-27.55	1,398.19	1.49	1.45	-0.32	
5,160.00	90.50	180.50	4,008.41	-1,458.22	-28.28	1,458.19	1.34	1.17	-0.67	
5,222.00	90.50	180.20	4,007.87	-1,520.22	-28.66	1,520.18	0.48	0.00	-0.48	
5,283.00	89.00	179.80	4,008.13	-1,581.21	-28.66	1,581.18	2.54	-2.46	-0.66	
5,341.78	89.09	179.33	4,009.11	-1,639.99	-28.21	1,639.95	0.82	0.16	-0.81	
Debes 32 #1H 1000' LL										
5,345.00	89.10	179.30	4,009.16	-1,643.20	-28.17	1,643.17	0.82	0.16	-0.81	
5,406.00	89.30	179.00	4,010.01	-1,704.19	-27.27	1,704.16	0.59	0.33	-0.49	
5,468.00	89.90	178.20	4,010.45	-1,766.17	-25.75	1,766.14	1.61	0.97	-1.29	
5,529.00	90.40	177.70	4,010.29	-1,827.13	-23.57	1,827.10	1.16	0.82	-0.82	
5,591.00	88.90	177.10	4,010.66	-1,889.06	-20.76	1,889.04	2.61	-2.42	-0.97	
5,652.00	88.80	176.60	4,011.89	-1,949.96	-17.41	1,949.94	0.84	-0.16	-0.82	
5,714.00	89.20	176.20	4,012.97	-2,011.83	-13.52	2,011.81	0.91	0.65	-0.65	
5,776.00	89.00	175.90	4,013.94	-2,073.67	-9.25	2,073.66	0.58	-0.32	-0.48	
5,836.00	88.60	175.70	4,015.20	-2,133.50	-4.85	2,133.49	0.75	-0.67	-0.33	
5,896.00	88.90	175.70	4,016.51	-2,193.31	-0.35	2,193.31	0.50	0.50	0.00	
5,958.00	89.00	175.80	4,017.65	-2,255.13	4.24	2,255.14	0.23	0.16	0.16	
6,019.00	89.30	175.50	4,018.55	-2,315.95	8.87	2,315.96	0.70	0.49	-0.49	

Company:	Unit Petroleum	Local Co-ordinate Reference:	Well Debes 32 #1H
Project:	Reno County, Kansas [NAD 83]	TVD Reference:	14' KB @ 1809.00usft (UDI 331)
Site:	Section 29 T25S-R10W	MD Reference:	14' KB @ 1809.00usft (UDI 331)
Well:	Debes 32 #1H	North Reference:	Grid
Wellbore:	OH	Survey Calculation Method:	Minimum Curvature
Design:	OH	Database:	EDM 5000.1 Single User Db

Survey										
Measured Depth (usft)	Inclination (°)	Azimuth (°)	Vertical Depth (usft)	+N/-S (usft)	+E/-W (usft)	Vertical Section (usft)	Dogleg Rate (°/100usft)	Build Rate (°/100usft)	Turn Rate (°/100usft)	
6,081.00	89.40	175.60	4,019.25	-2,377.76	13.68	2,377.77	0.23	0.16	0.16	
6,142.00	89.80	175.40	4,019.68	-2,438.57	18.46	2,438.59	0.73	0.66	-0.33	
6,204.00	89.80	175.20	4,019.90	-2,500.36	23.54	2,500.39	0.32	0.00	-0.32	
6,265.00	89.80	174.90	4,020.11	-2,561.13	28.81	2,561.16	0.49	0.00	-0.49	
6,327.00	89.80	175.40	4,020.33	-2,622.91	34.05	2,622.95	0.81	0.00	0.81	
6,341.17	89.73	175.40	4,020.38	-2,637.04	35.18	2,637.08	0.49	-0.49	0.00	
Debes 32 #1H 2000' LL										
6,388.00	89.50	175.40	4,020.70	-2,683.71	38.94	2,683.76	0.49	-0.49	0.00	
6,450.00	88.90	174.40	4,021.56	-2,745.46	44.45	2,745.51	1.88	-0.97	-1.61	
6,512.00	88.40	174.20	4,023.03	-2,807.14	50.61	2,807.19	0.87	-0.81	-0.32	
6,576.00	88.50	173.90	4,024.76	-2,870.77	57.24	2,870.83	0.49	0.16	-0.47	
6,640.00	88.30	174.10	4,026.54	-2,934.39	63.93	2,934.46	0.44	-0.31	0.31	
6,702.00	88.20	174.20	4,028.44	-2,996.04	70.24	2,996.12	0.23	-0.16	0.16	
6,765.00	89.20	174.30	4,029.87	-3,058.71	76.55	3,058.79	1.60	1.59	0.16	
6,829.00	90.60	176.90	4,029.98	-3,122.51	81.46	3,122.60	4.61	2.19	4.06	
6,892.00	93.00	178.50	4,028.00	-3,185.42	83.99	3,185.52	4.58	3.81	2.54	
6,956.00	93.40	178.50	4,024.43	-3,249.30	85.66	3,249.40	0.63	0.63	0.00	
7,018.00	92.00	178.60	4,021.51	-3,311.21	87.23	3,311.31	2.26	-2.26	0.16	
7,082.00	91.00	179.10	4,019.83	-3,375.17	88.51	3,375.28	1.75	-1.56	0.78	
7,146.00	89.90	178.90	4,019.33	-3,439.16	89.63	3,439.26	1.75	-1.72	-0.31	
7,210.00	90.60	179.10	4,019.05	-3,503.15	90.75	3,503.25	1.14	1.09	0.31	
7,273.00	90.30	179.10	4,018.55	-3,566.14	91.74	3,566.25	0.48	-0.48	0.00	
7,337.00	90.10	178.70	4,018.33	-3,630.13	92.96	3,630.23	0.70	-0.31	-0.63	
7,344.09	90.05	178.64	4,018.32	-3,637.22	93.13	3,637.32	1.02	-0.63	-0.79	
Debes 32 #1H 3000' LL										
7,400.00	89.70	178.20	4,018.44	-3,693.11	94.67	3,693.21	1.02	-0.63	-0.79	
7,463.00	89.30	177.00	4,018.99	-3,756.05	97.31	3,756.16	2.01	-0.63	-1.90	
7,525.00	89.10	177.80	4,019.86	-3,817.98	100.12	3,818.09	1.33	-0.32	1.29	
7,589.00	88.70	177.20	4,021.08	-3,881.90	102.91	3,882.02	1.13	-0.63	-0.94	
7,652.00	89.40	177.50	4,022.13	-3,944.83	105.82	3,944.95	1.21	1.11	0.48	
7,716.00	89.50	176.90	4,022.74	-4,008.75	108.95	4,008.87	0.95	0.16	-0.94	
7,778.00	89.80	176.50	4,023.12	-4,070.64	112.52	4,070.77	0.81	0.48	-0.65	
7,842.00	89.80	175.80	4,023.35	-4,134.50	116.81	4,134.63	1.09	0.00	-1.09	
7,904.00	89.90	175.70	4,023.51	-4,196.33	121.41	4,196.47	0.23	0.16	-0.16	
7,968.00	90.20	175.70	4,023.45	-4,260.15	126.21	4,260.29	0.47	0.47	0.00	
8,032.00	90.40	175.70	4,023.12	-4,323.97	131.01	4,324.12	0.31	0.31	0.00	
8,096.00	90.90	175.80	4,022.39	-4,387.78	135.75	4,387.94	0.80	0.78	0.16	
8,160.00	90.60	175.50	4,021.55	-4,451.59	140.60	4,451.76	0.66	-0.47	-0.47	
8,223.00	91.60	175.80	4,020.34	-4,514.40	145.38	4,514.57	1.66	1.59	0.48	
8,286.00	89.60	175.30	4,019.68	-4,577.20	150.27	4,577.38	3.27	-3.17	-0.79	
8,335.60	89.60	174.83	4,020.03	-4,626.61	154.54	4,626.79	0.95	0.00	-0.95	
Debes 32 #1H 4000' LL										
8,349.00	89.60	174.70	4,020.12	-4,639.96	155.76	4,640.14	0.95	0.00	-0.95	
8,410.00	89.10	174.30	4,020.82	-4,700.68	161.61	4,700.86	1.05	-0.82	-0.66	



Company:	Unit Petroleum	Local Co-ordinate Reference:	Well Debes 32 #1H
Project:	Reno County, Kansas [NAD 83]	TVD Reference:	14' KB @ 1809.00usft (UDI 331)
Site:	Section 29 T25S-R10W	MD Reference:	14' KB @ 1809.00usft (UDI 331)
Well:	Debes 32 #1H	North Reference:	Grid
Wellbore:	OH	Survey Calculation Method:	Minimum Curvature
Design:	OH	Database:	EDM 5000.1 Single User Db

Survey										
Measured Depth (usft)	Inclination (°)	Azimuth (°)	Vertical Depth (usft)	+N/-S (usft)	+E/-W (usft)	Vertical Section (usft)	Dogleg Rate (°/100usft)	Build Rate (°/100usft)	Turn Rate (°/100usft)	
8,472.00	89.60	174.60	4,021.52	-4,762.38	167.60	4,762.58	0.94	0.81	0.48	
8,536.00	90.60	174.60	4,021.41	-4,826.10	173.62	4,826.30	1.56	1.56	0.00	
8,598.00	90.20	175.30	4,020.97	-4,887.86	179.08	4,888.06	1.30	-0.65	1.13	
8,660.00	91.10	175.50	4,020.27	-4,949.65	184.05	4,949.86	1.49	1.45	0.32	
8,722.00	90.00	175.10	4,019.68	-5,011.44	189.13	5,011.66	1.89	-1.77	-0.65	
8,780.00	90.20	175.10	4,019.57	-5,069.23	194.09	5,069.45	0.34	0.34	0.00	
Last MWD Survey										
8,825.00	90.20	175.10	4,019.42	-5,114.06	197.93	5,114.29	0.00	0.00	0.00	
Projection to TD - Debes 32 #1H PBHL										

Design Annotations					
Measured Depth (usft)	Vertical Depth (usft)	Local Coordinates		Comment	
		+N/-S (usft)	+E/-W (usft)		
8,780.00	4,019.57	-5,069.23	194.09	Last MWD Survey	
8,825.00	4,019.42	-5,114.06	197.93	Projection to TD	

Checked By: _____ Approved By: _____ Date: _____