



*Depend on US*

# Post Job Report

## **Merit Energy**

GCCU 603S

4/10/2016

8.625" Surface Casing

Haskell County, KS





Table of Contents:

1.0 Executive Summary.....3

2.0 Job Summary.....4

    2.1 Job Event Log.....4

    2.2 Job Chart.....5

3.0 Water Testing.....6

4.0 Customer Satisfaction Survey.....7



1.0 Executive Summary

Allied Oil & Gas Services would like to thank you for the award of the provision of cementing products and services on the well GCCU 603S.

A pre-job meeting was held to discuss job details, review the safety hazards, potential environmental impact and established emergency procedures.

Allied started the job testing lines to 2000 psi. After a successful test we began the job by pumping 10 bbls of Fresh Water spacer. We then mixed and pumped the following cements:

<b>227.08 bbl</b>	<b>500</b>	<b>Sacks of 12.1 ppg</b>
<b>Class A Slurry -</b>	<b>2.55</b>	<b>Yield</b>

- 2.0% Sodium Metasilicate
- 2.0% Gypsum
- 4.0% Gel
- 2.0% Sodium Chloride
- 3.0 % Calcium Chloride
- 0.25 lb Cellophane Flake

<b>39.58 bbl</b>	<b>175</b>	<b>Sacks of 15.2 ppg</b>
<b>Class A Slurry -</b>	<b>1.27</b>	<b>Yield</b>

- 2.0 % Calcium Chloride
- 0.25 lb Cellophane Flake

The top plug was then released and displaced with 93 Bbls of Fresh Water. The plug bumped and was pressured to 1500 psi. Upon release the floats held. 90 bbl cement returned to the pit.

All real time data can be view in the Job Summary section.

Allied Oil & Gas Services remains committed to provide operational excellence and superior product performance. All comments and suggestions are greatly appreciated and help us to continue to provide this level of service.

Again we want to thank you for the opportunity to perform these and your future cementing & acidizing service needs.

### Cement Job Summary

Job Number: LIB160410125		Job Purpose: 01 Surface	
Customer: MERIT ENERGY COMPANY	Date: 4/10/2016		
Well Name: GCCU	Number: #603	API/UWI:	
County: Haskell	City: Sublette	State: Ks	
Cust. Rep:	Phone:	Rig Phone:	
Distance: 50 miles (one way)	Supervisor: Aldo Espinosa		

Employees:	Emp. ID:	Employees:	Emp. ID:
ALDO ESPINOZA			
Lenny Baeza			
JOSE CALDERON			
KIRBY HARPER			
Equipment:			
984-			
994-550			
956-841			
993-1066			

Materials - Pumping Schedule						
STAGE #1						
Fluid Name	Description	Rqstd Qty	Density	Yield	Water (gal/sk)	
Spacer 1	FRESH WATER	10	8.33	n/a	n/a	
Fluid Name	Description	Rqstd Qty	Density	Yield	Water (gal/sk)	
Lead 1	ALLIED MULTI-DENSITY CEMENT - CLASS A	500	12.10	2.55	14.86	
Fluid Name	Description	Rqstd Qty	Density	Yield	Water (gal/sk)	
Tail 1	CLASS A COMMON	140	15.19	1.27	5.75	
Fluid Name	Description	Rqstd Qty	Density	Yield	Water (gal/sk)	
Disp. 1	Displacement	93	8.33	n/a	n/a	

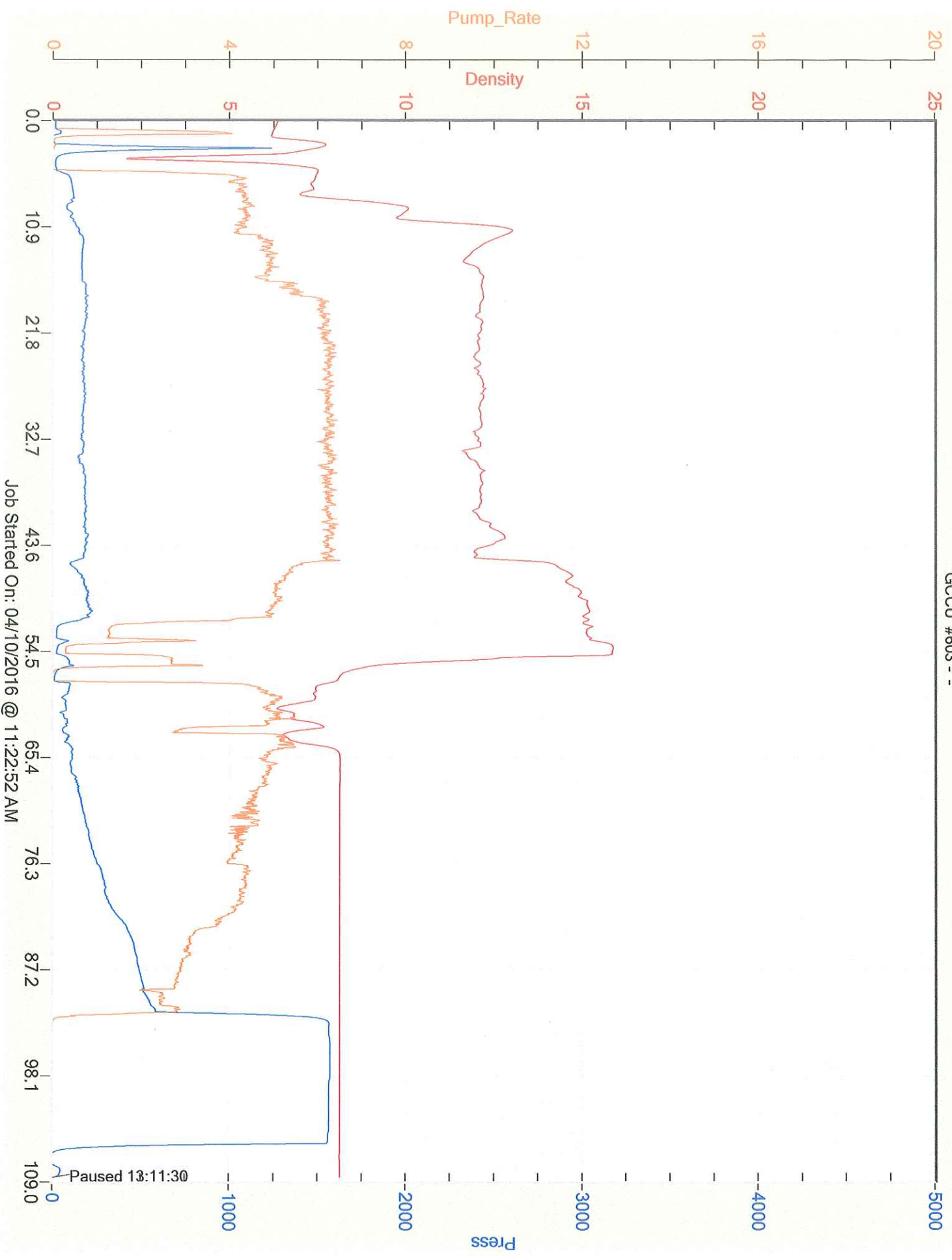
Slurry: Lead 1						
Slurry Name: ALLIED MULTI-DENSITY CEMENT - CLASS A Light						
Quantity:	500 sacks	Blend Vol:	630.29 cu.ft.	Blend Weight:	53657.838 lbs	
Material	Description	Conc. (lb/sk)	Determined by	Load Volume	UOM	
CCAC	CLASS A COMMON	94	% Base Materia	47000.0	lbm	
CA-500	GYPSUM	1.88	% BWOC	940.0	lbm	
CA-400	SODIUM METASILICATE	1.88	% BWOC	940.0	lbm	
Cgel	GEL - BENTONITE	3.76	% BWOC	1880.0	lbm	
CA-200	SODIUM CHLORIDE	2.475676	% BWOW	1237.8	lbm	
CA-100	CALCIUM CHLORIDE, PELLETS OR FLAKE	2.82	% BWOC	1410.0	lbm	
CLC-CPF	CELLOPHANE FLAKES	0.5	lb/sk	250.0	lbm	
Water	Mixing Water	14.86	gal/sk	7430	gal	

Slurry: Tail 1						
Slurry Name: CLASS A COMMON						
Quantity:	140 sacks	Blend Vol:	149.88 cu.ft.	Blend Weight:	13493.2 lbs	
Material	Description	Conc. (lb/sk)	Determined by	Load Volume	UOM	
CCAC	CLASS A COMMON	94	% Base Materia	13160.0	lbm	
CA-100	CALCIUM CHLORIDE, PELLETS OR FLAKE	1.88	% BWOC	263.2	lbm	
CLC-CPF	CELLOPHANE FLAKES	0.5	lb/sk	70.0	lbm	
Water	Mixing Water	5.75	gal/sk	805.0	gal	



Cement Job Summary

Job Number: LIB160410125		Job Purpose: 01 Surface		Date: 4/10/2016		
Customer: MERIT ENERGY COMPANY		Number: #603		API/UWI:		
Well Name: GCCU		City: Sublette		State: Ks		
County: Haskell		Phone:		Rig Phone: 0		
Cust. Rep:		Supervisor: Aldo Espinosa		Distance: 50 miles (one way)		
DATE	TIME	PRESSURE - (PSI)		FLUID PUMPED DATA		COMMENTS
	AM/PM	CASING	ANNULUS	VOLUME	RATE (BPM)	
4/10/2016	1000AM					ARRIVE ON LOCATION / RIG COMING OUT OF HOLE WITH DRILLPIPE
	1030AM					SPOT EQUIPMENT / RIG UP IRON
						RIG RUNNING CASING
	1100AM					CASING ON BOTTOM
	1115AM					STAB CMT HEAD AND LINES FOR RIG TO CIRCULATE
	1120AM	2000				TEST LINES 2000 PSI
	1121AM	100		10	3.5	PUMP FRESH WATER
	1126AM	120		220	5	PUMP 500 SKS OF LEAD CMT 227 BBLs @12.1)
	1208PM	80				PUMP 140 SKS OF TAIL CMT 32 BBLs @15.2)
	1221PM			40	3	SHUTDOWN / DROP PLUG
	1226PM	110			4	20 BBL GONE
	1230PM	130			4	40 BBL GONE
	1234PM	180			4	60 BBL GONE
	1240PM	240		108	4	80 BBL GONE
	1244PM	310			3	100 BL GONE
	1250PM	470			3	120 BBL GONE
	1255PM	490				135 BBL GONE, BUMP PLUG
		1500				PRESSURE TEST CASING FOR 15 MIN @ 1500 PSI
	110PM	1500				CHECK FLOATS, FLOATS HOLDING
	125PM					RIG DOWN
	145PM					LEAVE LOCATION
						90 BBL BACK TO SURFACE
						THANKS



Job Started On: 04/10/2016 @ 11:22:52 AM



**CEMENT MIXING WATER GUIDELINES**

Company Name:

**MERIT ENERGY COMPANY**

Lease Name:

**GCCU # #603**

County

State

**Haskell**

**Ks**

Water Source:

**TANK**

Submitted By:

Date:

**Aldo Espinosa**

**4/10/2016**

pH Level

**7.5**

Must be less than 8.5

Sulfates

**300**

Must be less than 1,000 PPM

Chlorides

**500**

Must be less than 3,000 PPM

Temperature

**75**

Must be less than 100 deg F

**COMMENTS**

Thank You

Customer Signature

