



Depend on US

Post Job Report

Merit Energy

GCCU 603

4/14/2015

5.5" 2-Stage Production Casing

Haskell County, KS





Table of Contents:

1.0 Executive Summary.....	3
2.0 Job Summary.....	4
2.1 Job Event Log.....	4
2.2 Job Chart.....	7
3.0 Water Testing.....	9
4.0 Customer Satisfaction Survey.....	10



Merit Energy
GCCU 603
Haskell County, KS

1.0 Executive Summary

Allied Oil & Gas Services would like to thank you for the award of the provision of cementing products and services on the well GCCU 603 intermediate casing.

A pre-job meeting was held to discuss job details, review the safety hazards, potential environmental impact and established emergency procedures.

Allied started the job testing lines to 3000 psi. After a successful test we began the job by plugging the rat hole and mouse hole with 50 sacks and then began pumping 12 bbls of HiVis Sweep spacer. We then mixed and pumped the following cements:

1st Stage:

43.01 bbl	150 Sacks of 13.6 ppg
50/50 H Slurry:	1.61 Yield
10.0% Salt	
5.0% Gypsum	
2.0% Gel	
0.5% CFL-210	
5.0 lb Kol-Seal	
0.25 lb Cellophane Flake	
0.2% CD-100	

2nd Stage was cancelled due to lost returns on opening the tool.

The first stage was displaced with 90 bbl fresh water and 153 Bbls of WBM. The plug bumped and was pressured to 1500 psi. Upon release the floats held. The stage tool was opened at 800 psi and the rig circulated 1 hour and then lost returns. The second stage was cancelled due to lost returns.

All real time data can be view in the Job Summary section.

Allied Oil & Gas Services remains committed to provide operational excellence and superior product performance. All comments and suggestions are greatly appreciated and help us to continue to provide this level of service.

Again we want to thank you for the opportunity to perform these and your future cementing & acidizing service needs.

Cement Job Summary

Job Number: LIK1604150515		Job Purpose: 02 Production/Long String	
Customer:	MERIT ENERGY COMPANY		Date: 4/14/2016
Well Name: GCCU	Number: 603		API/UWI:
County: Haskell	City: Sublette	State: KS	
Cust. Rep:	Phone:	Rig Phone:	
Distance: 50 miles (one way)	Supervisor: Kirby Harper		

Employees:	Emp. ID:	Employees:	Emp. ID:
KIRBY H			
ALDO E			
JOSE C			

Equipment:	
	541
	1066

Materials - Pumping Schedule					
STAGE #1					
Fluid Name	Description	Rqstd Qty	Density	Yield	Water (gal/sk)
Spacer 1	HIVIS SWEEP	12	8.40	n/a	n/a
Fluid Name	Description	Rqstd Qty	Density	Yield	Water (gal/sk)
Lead 1	ALLIED 50/50 POZ BLEND - CLASS H	50	13.60	1.61	7.37
Fluid Name	Description	Rqstd Qty	Density	Yield	Water (gal/sk)
Tail 1	ALLIED 50/50 POZ BLEND - CLASS H	150	13.60	1.61	7.37
Fluid Name	Description	Rqstd Qty	Density	Yield	Water (gal/sk)
Disp. 1	Displacement	137	8.33	n/a	n/a
STAGE #2					
Fluid Name	Description	Rqstd Qty	Density	Yield	Water (gal/sk)
Stg 2 Spacer 1	HIVIS SWEEP	12	8.40	n/a	n/a
Fluid Name	Description	Rqstd Qty	Density	Yield	Water (gal/sk)
Stg 2 Tail 1	ALLIED SPECIAL BLEND CEMENT - CLASS A	0	13.60	1.92	9.56
Fluid Name	Description	Rqstd Qty	Density	Yield	Water (gal/sk)
Stg 2 Disp. 1	Displacement	137	8.33	n/a	n/a

Slurry: Lead 1		Slurry Name: ALLIED 50/50 POZ BLEND - CLASS H			
Quantity:	50 sacks	Blend Vol:	65.66 cu.ft.	Blend Weight:	5092.8605 lbs
Material	Description	Conc. (lb/sk)	Determined by	Load Volume	UOM
CCHP	CLASS H PREMIUM	47	% Base Materia	2350.0	lbm
CPOZ	POZMIX FLYASH	37	% Base Materia	1850.0	lbm
CGEL	GEL - BENTONITE	1.68	% BWOC	84.0	lbm
CFL-210	FLUID LOSS ADDITIVE - LOW TEMP	0.42	% BWOC	21.0	lbm
CLC-KOL	KOL-SEAL	5	lb/sk	250.0	lbm
CLC-CPF	CELLOPHANE FLAKES	0.25	lb/sk	12.5	lbm
CA-200	SODIUM CHLORIDE	6.13921	% BWOW	307.0	lbm
CA-500	GYPSUM	4.2	% BWOC	210.0	lbm
CD-100	CEMENT DISPERSANT	0.168	% BWOC	8.4	lbm
Water	Mixing Water	7.37	gal/sk	368.5	gal

Slurry: Tail 1		Slurry Name: ALLIED 50/50 POZ BLEND - CLASS H			
Quantity:	150 sacks	Blend Vol:	196.96 cu.ft.	Blend Weight:	15278.5815 lbs
Material	Description	Conc. (lb/sk)	Determined by	Load Volume	UOM
CCHP	CLASS H PREMIUM	47	% Base Materia	7050.0	lbm
CPOZ	POZMIX FLYASH	37	% Base Materia	5550.0	lbm

Cement Job Summary

CGEL	GEL - BENTONITE	1.68	% BWOC	252.0	lbm
CFL-210	FLUID LOSS ADDITIVE - LOW TEMP	0.42	% BWOC	63.0	lbm
CLC-KOL	KOL-SEAL	5	lb/sk	750.0	lbm
CLC-CPF	CELLOPHANE FLAKES	0.25	lb/sk	37.5	lbm
CA-200	SODIUM CHLORIDE	6.13921	% BWOW	920.9	lbm
CA-500	GYP SUM	4.2	% BWOC	630.0	lbm
CD-100	CEMENT DISPERSANT	0.168	% BWOC	25.2	lbm
Water	Mixing Water	7.37	gal/sk	1105.5	gal

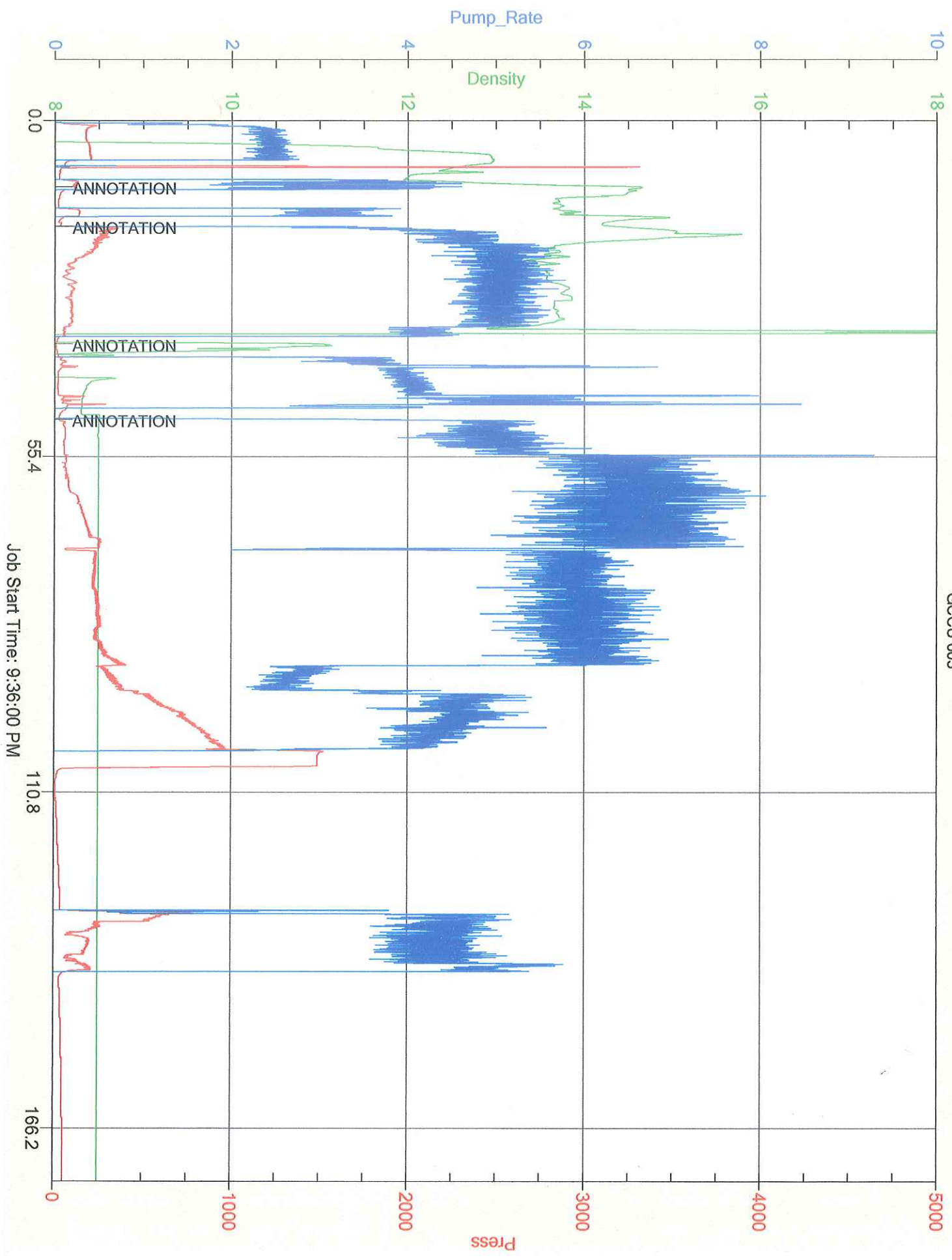
Slurry: Stg 2 Tail 1		Slurry Name: ALLIED SPECIAL BLEND CEMENT - CLASS A				
Quantity:	0 sacks	Blend Vol:	0 cu.ft.	Blend Weight:	0 lbs	
Material	Description	Conc. (lb/sk)	Determined by	Load Volume	UOM	
0		0	0		lbm	
0		0	0		lbm	
0		0	0		lbm	
0		0	0		lbm	
CFL-210	FLUID LOSS ADDITIVE - LOW TEMP	0	% BWOC		lbm	
CLC-KOL	KOL-SEAL	5	lb/sk	0.0	lbm	
CLC-CPF	CELLOPHANE FLAKES	0.25	lb/sk	0.0	lbm	
Water	Mixing Water	9.56	gal/sk	0.0	gal	

Job Number:	LIK1604150515	Job Purpose	02 Production/Long String			
Customer:	MERIT ENERGY COMPANY			Date:	4/14/2016	
Well Name:	GCCU	Number:	603	API/UWI:		
County:	Haskell	City:	Sublette	State:	KS	
Cust. Rep:		Phone:		Rig Phone:	0	
Distance	50 miles (one way)		Supervisor	Kirby Harper		
DATE	TIME	PRESSURE - (PSI)		FLUID PUMPED DATA		COMMENTS
	AM/PM	CASING	ANNULUS	VOLUME	RATE (BPM)	
4/14/2016	1930					ARRIVE TO LOCATION
	1930					RIG RUNNING CASING
	2000					CASING ON BOTTOM
	2030					SAFETY MEETING
	2047	50		12	3	PUMP HIVIS SWEEP
	2053	2000				PRESSURE TEST
	2055	--		12	2	PLUG RAT AND MOUSE
	2101	110		43	5	PUMP CEMENT
	2128	--		--		DROP PLUG -- CLEAN LINES
	2136	50		0	6.5	PUMP WATER DISPLACEMENT
	2154	250		90	6.5	PUMP MUD DISPLACEMENT
	2215	400-280		190	3	SLOW RATE
	2219	520		200	4.5	RESUME RATE
	2226	800		233	3	SLOW RATE
	2229	900-1500		243		BUMP PLUG
	2231	1500-0				RELEASE PSI -- FLOAT GOOD
	2237	--				DROP OPENING TOOL
	2257	800				OPEN TOOL
	2306					BREAK CIRC.
4/15/2016	2400					RIG LOST RETURNS
						SECOND STAGE
						CUSTOMER DECIDED TO
						CANCEL SECOND STAGE
	0420	1000		0	4.5	DROP PLUG -- DISPLACE
	0446	1500		100	4	100 BBL PUMPED

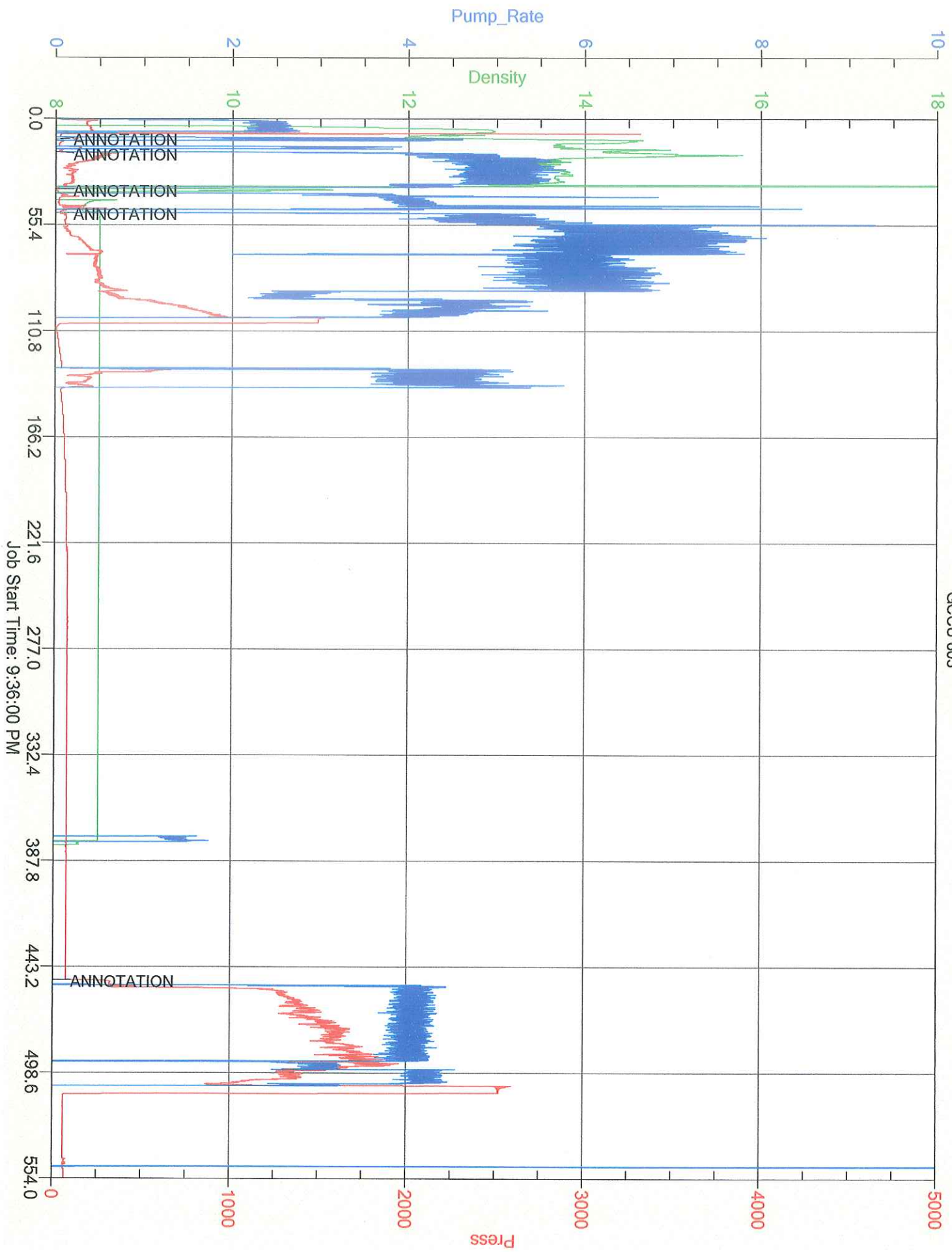
Cement Job Summary

	0457	1780		140	4	140 BBL PUMPED
	0504	1300		160	4	160 PUMPED
	0508	1100		180	4	180 PUMPED
	0511	900-2500		193		BUMP PLUG
	0514	2500-0				RELEASE PSI -- TOOL CLOSED

MERIT ENERGY
GCCU 603



Job Start Time: 9:36:00 PM






Customer: MERIT ENERGY COMPANY
 Date: Thursday, April 14, 2016
 Well Name: GCCU # 603
 Well Location: Sublette
 Supervisor: Kirby Harper

Equipment Operators: KIRBY H - ALDO E - JOSE C

Performance	Customer	
Was the appearance of the personnel and equipment satisfactory?	Yes	No
Was the job performed in a professional manner?	Yes	No
Were the calculations prepared and explained properly?	Yes	No
Were the correct services dispatched to the job site?	Yes	No
Were the services performed as requested?	Yes	No
Did the job site environment remain unchanged?	Yes	No
Did the equipment perform in the manner expected?	Yes	No
Did the materials meet your expectations?	Yes	No
Was the crew prepared for the job?	Yes	No
Was the crew prompt in the rig-up and actual job?	Yes	No
Were reasonable recommendations given, as requested?	Yes	No
Did the crew perform safely?	Yes	No
Was the job performed to your satisfaction?	Yes	No

Customer Signature:  Date: 4-15-16

Additional Comments:



CEMENT MIXING WATER GUIDELINES

Company Name:

MERIT ENERGY COMPANY

Lease Name:

GCCU # 603

County

Haskell

State

KS

Water Source:

TANK

Submitted By:

Kirby Harper

Date:

4/14/2016

pH Level

7

Must be less than 8.5

Sulfates

200

Must be less than 1,000 PPM

Chlorides

550

Must be less than 3,000 PPM

Temperature

62

Must be less than 100 deg F

COMMENTS

Customer Signature _____

Thank You