



**TRILOBITE
TESTING, INC**

DRILL STEM TEST REPORT

Suemaor Exploration & Production, LLC

26-6S-28W Sheridan, KS

539 N. Carancahua
Suite 1100
Corpus Christi, TX 78401
ATTN: Bob Petersen

ShawnSpresserTst1-26

Job Ticket: 58062

DST#: 1

Test Start: 2016.08.16 @ 13:08:59

GENERAL INFORMATION:

Formation: **Oread**

Deviated: No Whipstock: ft (KB)

Time Tool Opened: 16:10:29

Time Test Ended: 21:08:29

Test Type: Conventional Bottom Hole (Initial)

Tester: Brannan Lonsdale

Unit No: 73

Interval: 3799.00 ft (KB) To 3835.00 ft (KB) (TVD)

Reference Elevations: 2735.00 ft (KB)

Total Depth: 3835.00 ft (KB) (TVD)

2730.00 ft (CF)

Hole Diameter: 7.88 inches Hole Condition: Fair

KB to GR/CF: 5.00 ft

Serial #: 6651

Inside

Press@RunDepth: 156.62 psig @ 3832.00 ft (KB)

Capacity: 8000.00 psig

Start Date: 2016.08.16

End Date:

2016.08.16

Last Calib.:

2016.08.16

Start Time: 13:09:00

End Time:

21:08:29

Time On Btm:

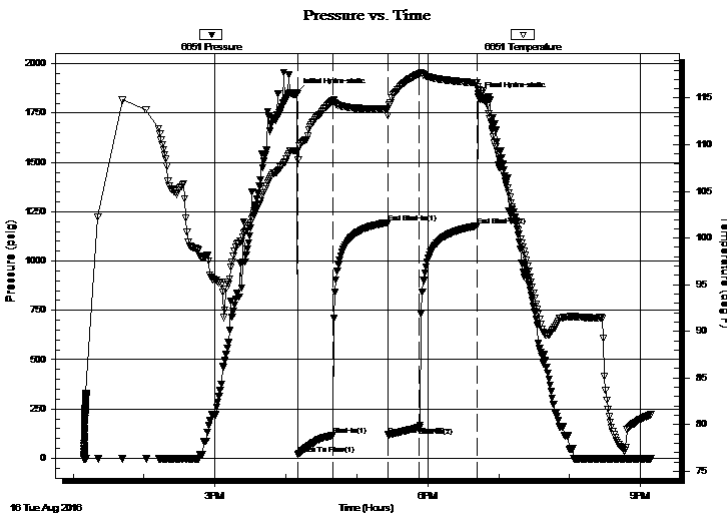
2016.08.16 @ 16:08:59

Time Off Btm:

2016.08.16 @ 18:42:59

TEST COMMENT: 30- IF- Steady build to 11"
45- IS- No blow
30- FF- Slow ly built to 9"
45- FS- No blow

PRESSURE SUMMARY



| Time (Min.) | Pressure (psig) | Temp (deg F) | Annotation |
|-------------|-----------------|--------------|----------------------|
| 0 | 1851.82 | 109.32 | Initial Hydro-static |
| 2 | 19.53 | 108.38 | Open To Flow (1) |
| 31 | 115.25 | 114.67 | Shut-In(1) |
| 77 | 1195.13 | 113.85 | End Shut-In(1) |
| 78 | 118.80 | 113.14 | Open To Flow (2) |
| 104 | 156.62 | 117.61 | Shut-In(2) |
| 153 | 1177.98 | 116.64 | End Shut-In(2) |
| 154 | 1831.03 | 115.94 | Final Hydro-static |

Recovery

| Length (ft) | Description | Volume (bbl) |
|-------------|---------------------|--------------|
| 187.00 | MW, 90%W 10%M | 0.92 |
| 63.00 | WOCM, 5%O 20%W 75%M | 0.89 |
| 48.00 | SOCM, 5%O 95%M | 0.68 |
| 15.00 | CO | 0.21 |
| | | |
| | | |

Gas Rates

| | Choke (inches) | Pressure (psig) | Gas Rate (Mcf/d) |
|--|----------------|-----------------|------------------|
| | | | |



**TRILOBITE
TESTING, INC**

DRILL STEM TEST REPORT

Suemaur Exploration & Production, LLC

26-6S-28W Sheridan, KS

539 N. Carancahua
Suite 1100
Corpus Christi, TX 78401
ATTN: Bob Petersen

ShawnSpresserTst1-26

Job Ticket: 58062

DST#: 1

Test Start: 2016.08.16 @ 13:08:59

GENERAL INFORMATION:

Formation: **Oread**

Deviated: No Whipstock: ft (KB)

Time Tool Opened: 16:10:29

Time Test Ended: 21:08:29

Test Type: Conventional Bottom Hole (Initial)

Tester: Brannan Lonsdale

Unit No: 73

Interval: 3799.00 ft (KB) To 3835.00 ft (KB) (TVD)

Reference Elevations: 2735.00 ft (KB)

Total Depth: 3835.00 ft (KB) (TVD)

2730.00 ft (CF)

Hole Diameter: 7.88 inches Hole Condition: Fair

KB to GR/CF: 5.00 ft

Serial #: 8959 Outside

Press@RunDepth: psig @ 3832.00 ft (KB)

Capacity: 8000.00 psig

Start Date: 2016.08.16

End Date: 2016.08.16

Last Calib.: 2016.08.16

Start Time: 13:08:42

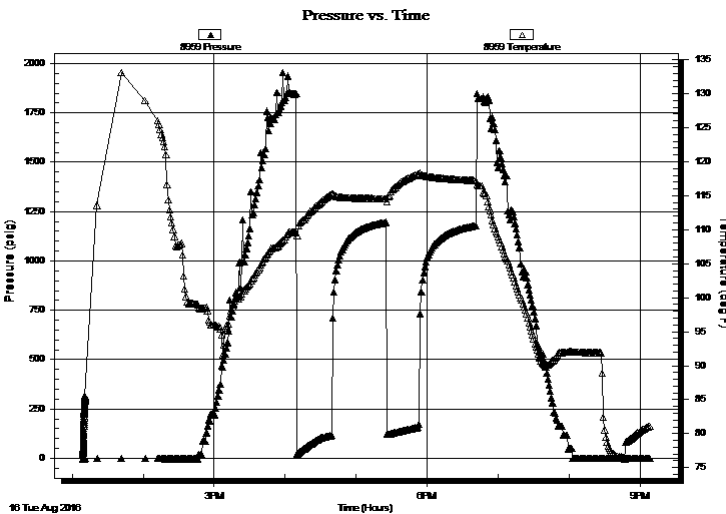
End Time: 21:08:11

Time On Btm:

Time Off Btm:

TEST COMMENT: 30- IF- Steady build to 11"
45- IS- No blow
30- FF- Slow ly built to 9"
45- FS- No blow

PRESSURE SUMMARY



| Time (Min.) | Pressure (psig) | Temp (deg F) | Annotation |
|-------------|-----------------|--------------|------------|
| | | | |

Recovery

| Length (ft) | Description | Volume (bbl) |
|-------------|---------------------|--------------|
| 187.00 | MW, 90%W 10%M | 0.92 |
| 63.00 | WOCM, 5%O 20%W 75%M | 0.89 |
| 48.00 | SOCM, 5%O 95%M | 0.68 |
| 15.00 | CO | 0.21 |
| | | |
| | | |

Gas Rates

| Choke (inches) | Pressure (psig) | Gas Rate (Mcf/d) |
|----------------|-----------------|------------------|
| | | |



**TRILOBITE
TESTING, INC**

DRILL STEM TEST REPORT

FLUID SUMMARY

Suemaer Exploration & Production, LLC

26-6S-28W Sheridan, KS

539 N. Carancahua
Suite 1100
Corpus Christi, TX 78401
ATTN: Bob Petersen

ShawnSpresserTst1-26

Job Ticket: 58062 **DST#: 1**

Test Start: 2016.08.16 @ 13:08:59

Mud and Cushion Information

| | | |
|----------------------------------|----------------------------|---------------------------|
| Mud Type: Gel Chem | Cushion Type: | Oil API: 33 deg API |
| Mud Weight: 9.00 lb/gal | Cushion Length: ft | Water Salinity: 55000 ppm |
| Viscosity: 65.00 sec/qt | Cushion Volume: bbl | |
| Water Loss: 6.80 in ³ | Gas Cushion Type: | |
| Resistivity: ohm.m | Gas Cushion Pressure: psig | |
| Salinity: 600.00 ppm | | |
| Filter Cake: inches | | |

Recovery Information

Recovery Table

| Length ft | Description | Volume bbl |
|--------------|---------------------|---------------|
| 187.00 | MW, 90%W 10%M | 0.920 |
| 63.00 | WOCM, 5%O 20%W 75%M | 0.893 |
| 48.00 | SOCM, 5%O 95%M | 0.680 |
| 15.00 | CO | 0.213 |

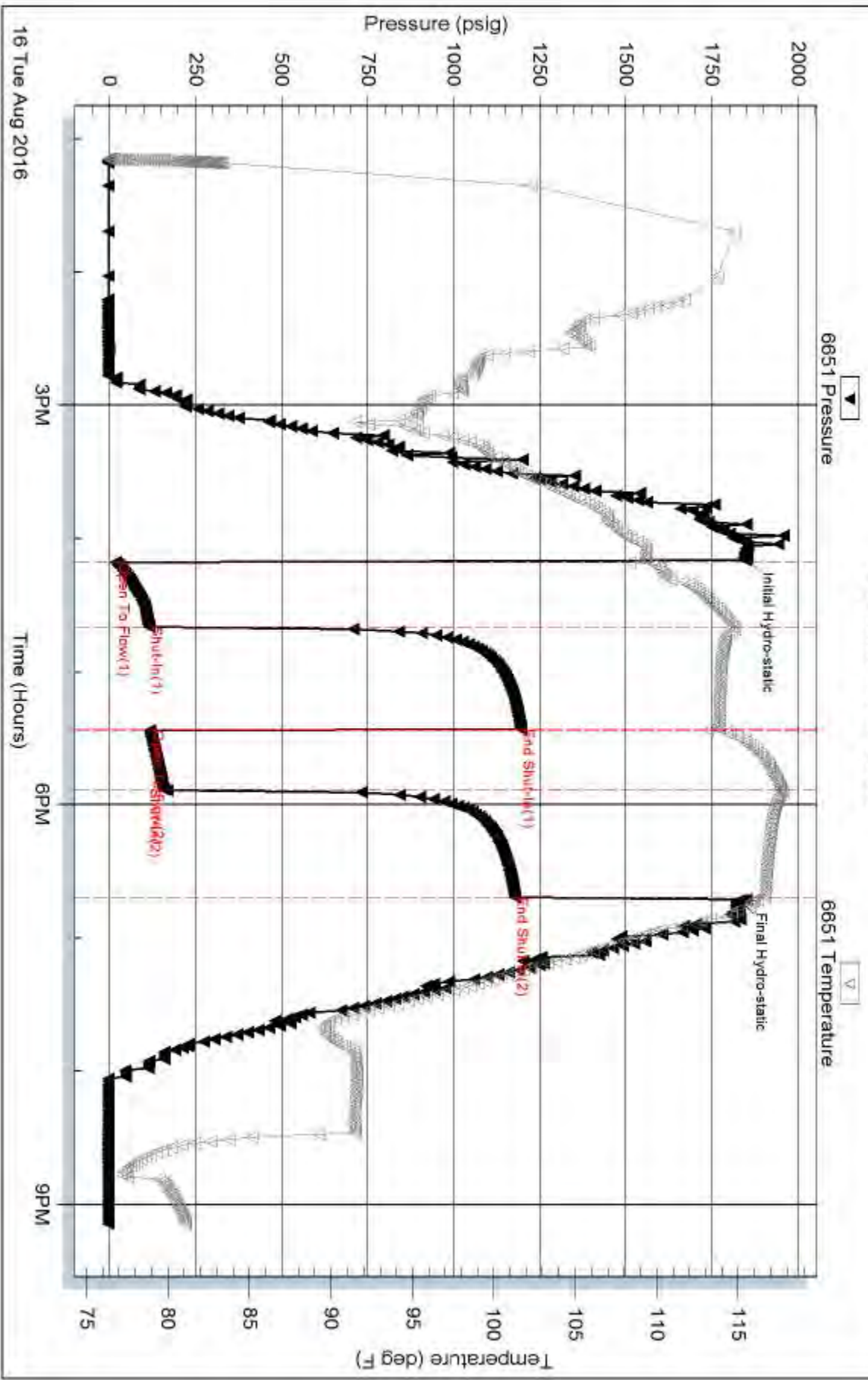
Total Length: 313.00 ft Total Volume: 2.706 bbl

Num Fluid Samples: 0 Num Gas Bombs: 0 Serial #:

Laboratory Name: Laboratory Location:

Recovery Comments:

Pressure vs. Time

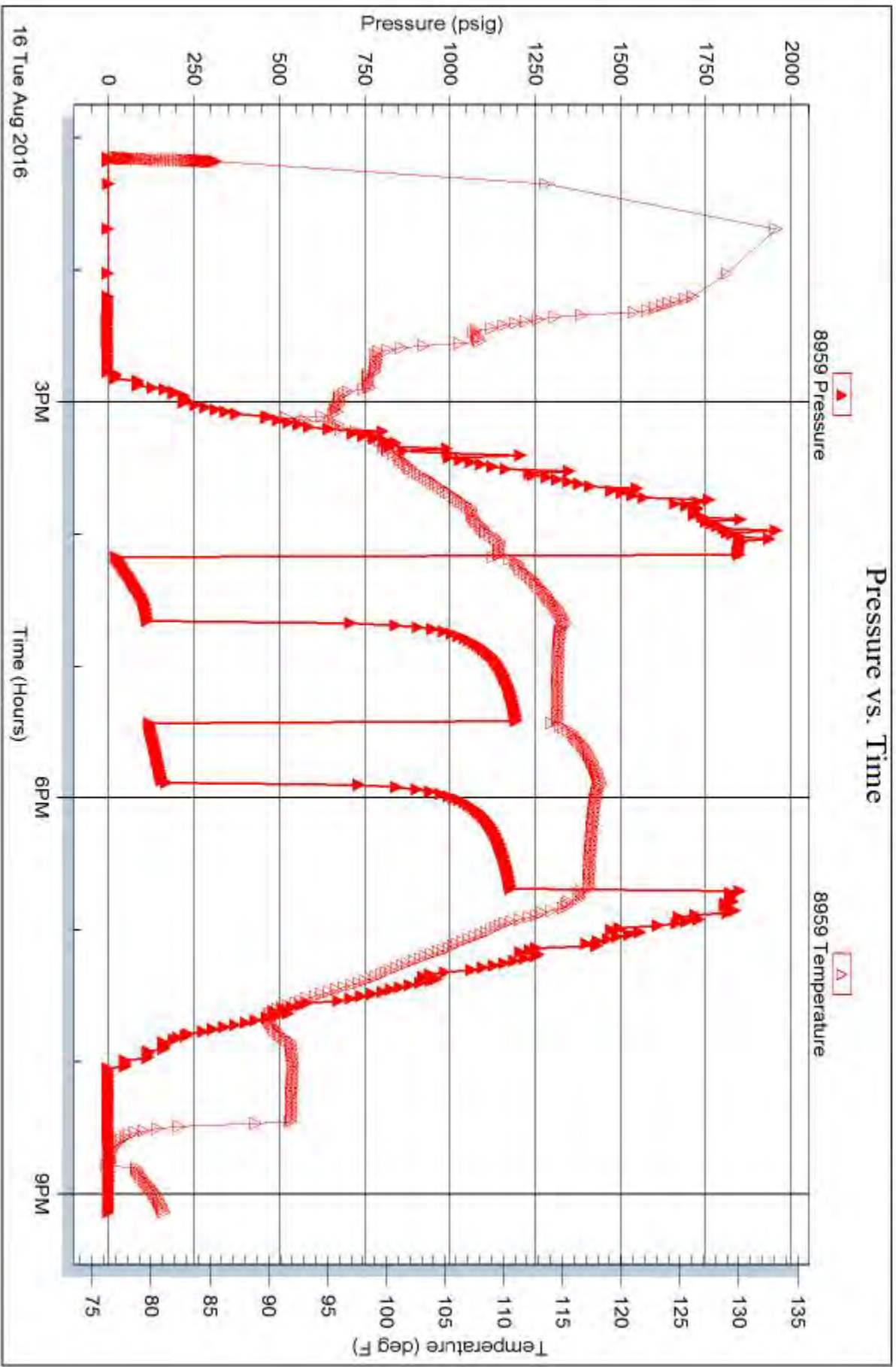


Serial #: 8959

Outside Suenor Exploration & Production, LLC

Shaw nSpressoTstH-26

DST Test Number: 1





TRILOBITE TESTING, INC

DRILL STEM TEST REPORT

Suema Exploration & Production, LLC

26-6S-28W Sheridan, KS

539 N. Carancahua
Suite 1100
Corpus Christi, TX 78401
ATTN: Bob Petersen

ShawnSpresserTst1-26

Job Ticket: 58063 **DST#: 2**

Test Start: 2016.08.17 @ 07:35:17

GENERAL INFORMATION:

Formation: **Toronto-LKC"A"**
 Deviated: No Whipstock: ft (KB)
 Time Tool Opened: 09:27:17
 Time Test Ended: 15:08:47
 Interval: **3845.00 ft (KB) To 3902.00 ft (KB) (TVD)**
 Total Depth: 3902.00 ft (KB) (TVD)
 Hole Diameter: 7.88 inches Hole Condition: Fair
 Test Type: Conventional Bottom Hole (Reset)
 Tester: Brannan Lonsdale
 Unit No: 73
 Reference Elevations: 2735.00 ft (KB)
 2730.00 ft (CF)
 KB to GR/CF: 5.00 ft

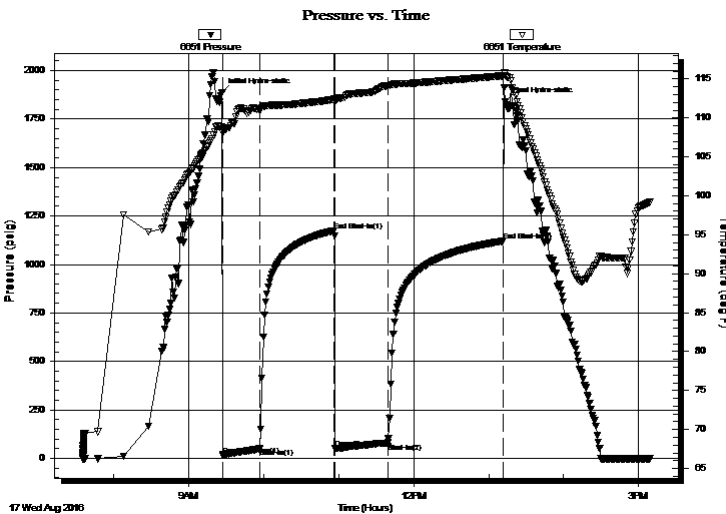
Serial #: 6651

Inside

Press@RunDepth: 78.90 psig @ 3867.00 ft (KB) Capacity: 8000.00 psig
 Start Date: 2016.08.17 End Date: 2016.08.17 Last Calib.: 2016.08.17
 Start Time: 07:35:18 End Time: 15:08:47 Time On Btm: 2016.08.17 @ 09:26:47
 Time Off Btm: 2016.08.17 @ 13:13:17

TEST COMMENT: 30- IF- Built very slow ly to 2"
 60- IS- No blow
 45- FF- Surface blow
 90- FSI- No blow

PRESSURE SUMMARY



| Time (Min.) | Pressure (psig) | Temp (deg F) | Annotation |
|-------------|-----------------|--------------|----------------------|
| 0 | 1888.49 | 108.91 | Initial Hydro-static |
| 1 | 16.75 | 108.03 | Open To Flow (1) |
| 30 | 49.07 | 111.12 | Shut-In(1) |
| 90 | 1174.79 | 112.39 | End Shut-In(1) |
| 91 | 50.61 | 112.18 | Open To Flow (2) |
| 133 | 78.90 | 114.12 | Shut-In(2) |
| 225 | 1120.65 | 115.40 | End Shut-In(2) |
| 227 | 1837.90 | 115.40 | Final Hydro-static |

Recovery

| Length (ft) | Description | Volume (bbl) |
|-------------|-----------------------------|--------------|
| 130.00 | SWM, 2%W 98%M w / oil spots | 0.64 |
| | | |
| | | |
| | | |
| | | |

* Recovery from multiple tests

Gas Rates

| Choke (inches) | Pressure (psig) | Gas Rate (Mcf/d) |
|----------------|-----------------|------------------|
| | | |



**TRILOBITE
TESTING, INC**

DRILL STEM TEST REPORT

FLUID SUMMARY

Suemaaur Exploration & Production, LLC

26-6S-28W Sheridan, KS

539 N. Carancahua
Suite 1100
Corpus Christi, TX 78401
ATTN: Bob Petersen

ShawnSpresserTst1-26

Job Ticket: 58063

DST#: 2

Test Start: 2016.08.17 @ 07:35:17

Mud and Cushion Information

Mud Type: Gel Chem

Mud Weight: 9.00 lb/gal

Viscosity: 65.00 sec/qt

Water Loss: 6.79 in³

Resistivity: ohm.m

Salinity: 600.00 ppm

Filter Cake: inches

Cushion Type:

Cushion Length: ft

Cushion Volume: bbl

Gas Cushion Type:

Gas Cushion Pressure: psig

Oil API:

deg API

Water Salinity: 51000 ppm

Recovery Information

Recovery Table

| Length ft | Description | Volume bbl |
|--------------|-----------------------------|---------------|
| 130.00 | SWM, 2%W 98%M w / oil spots | 0.639 |

Total Length: 130.00 ft Total Volume: 0.639 bbl

Num Fluid Samples: 0

Num Gas Bombs: 0

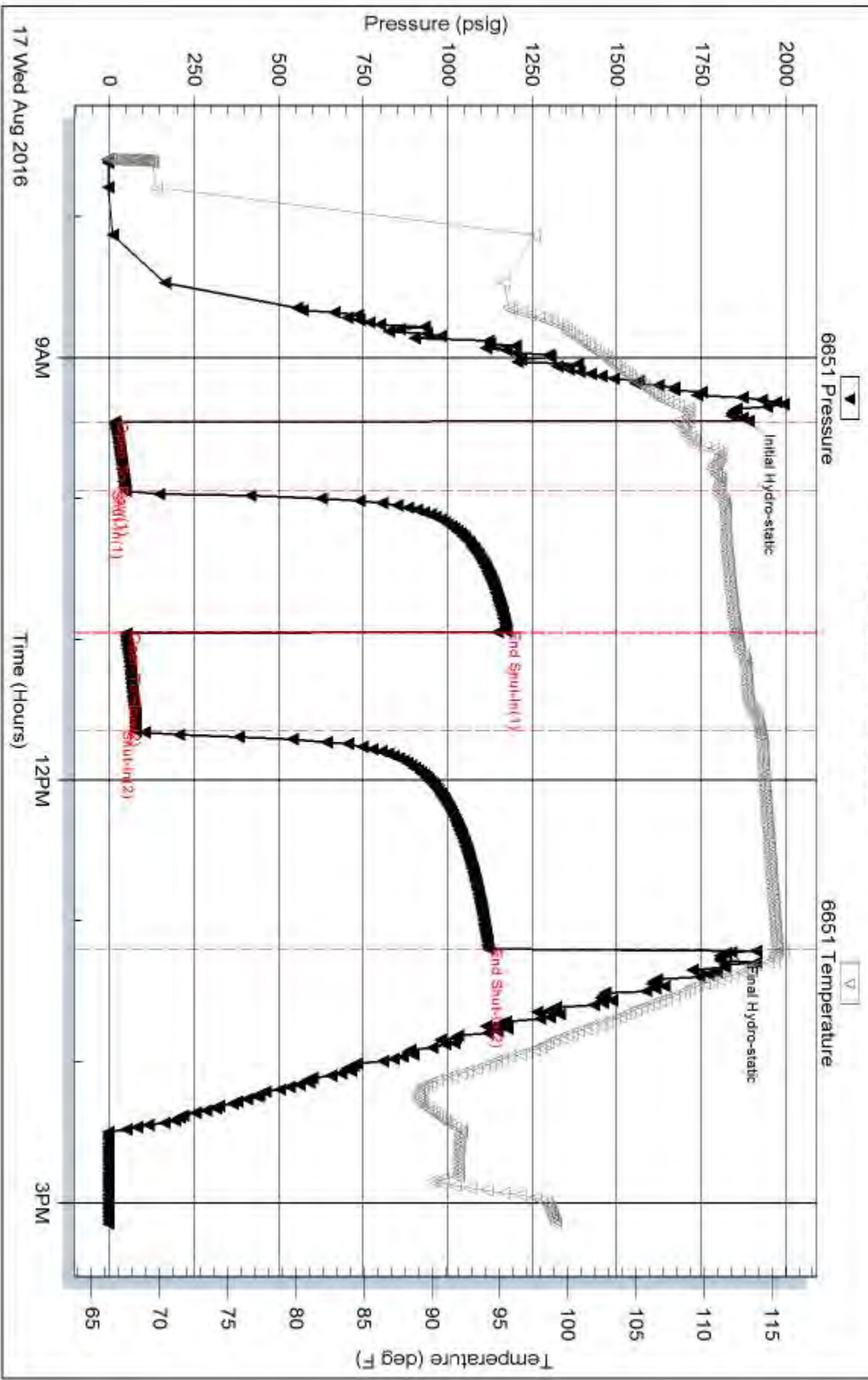
Serial #:

Laboratory Name:

Laboratory Location:

Recovery Comments:

Pressure vs. Time

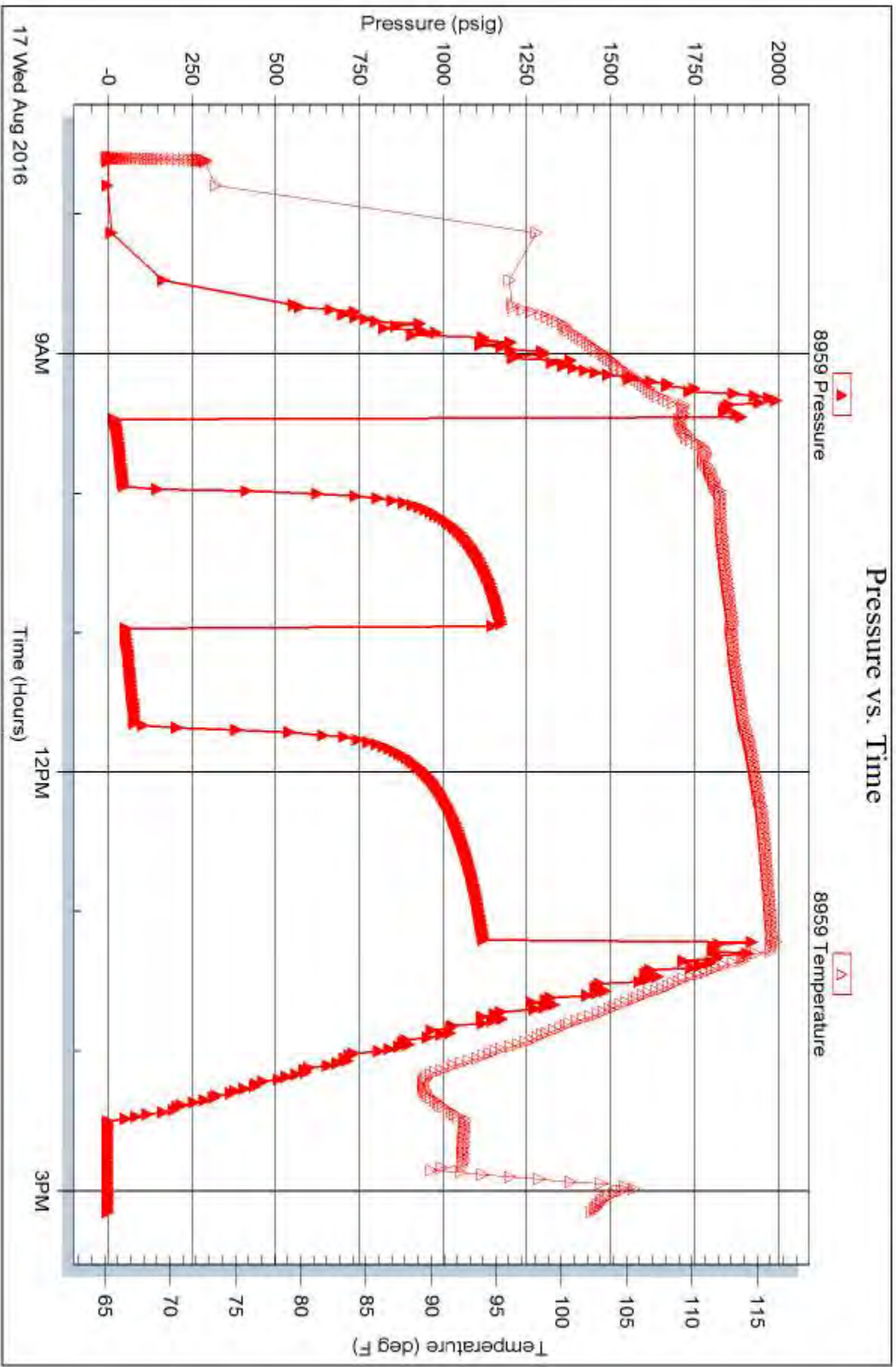


Serial #: 8959

Outside Suenor Exploration & Production, LLC

Shaw nSpressoTst1-26

DST Test Number: 2





**TRILOBITE
TESTING, INC**

DRILL STEM TEST REPORT

Suema Exploration & Production, LLC

26-6S-28W Sheridan, KS

539 N. Carancahua
Suite 1100
Corpus Christi, TX 78401
ATTN: Bob Petersen

ShawnSpresserTst1-26

Job Ticket: 58064

DST#: 3

Test Start: 2016.08.17 @ 21:16:56

GENERAL INFORMATION:

Formation: **LKC "C"**

Deviated: No Whipstock: ft (KB)

Time Tool Opened: 23:17:56

Time Test Ended: 05:03:26

Test Type: Conventional Bottom Hole (Reset)

Tester: Brannan Lonsdale

Unit No: 73

Interval: 3902.00 ft (KB) To 3924.00 ft (KB) (TVD)

Reference Elevations: 2735.00 ft (KB)

Total Depth: 3924.00 ft (KB) (TVD)

2730.00 ft (CF)

Hole Diameter: 7.88 inches Hole Condition: Fair

KB to GR/CF: 5.00 ft

Serial #: 6651

Inside

Press@RunDepth: 96.34 psig @ 3921.00 ft (KB)

Capacity: 8000.00 psig

Start Date: 2016.08.17

End Date:

2016.08.18

Last Calib.:

2016.08.18

Start Time:

21:16:57

End Time:

05:03:26

Time On Btm:

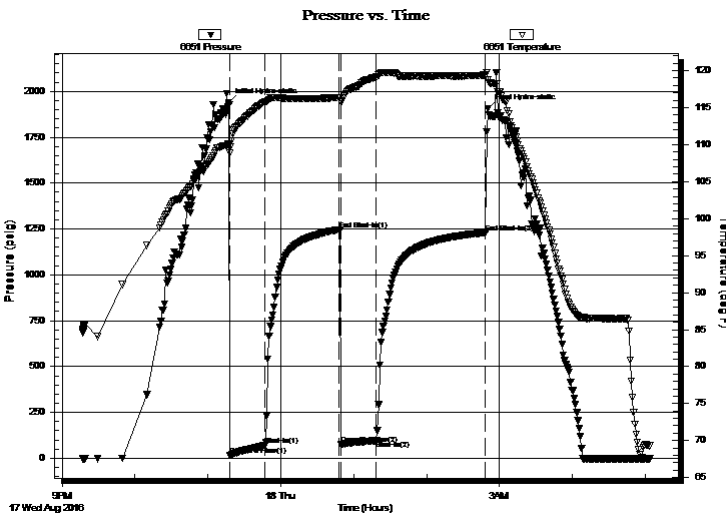
2016.08.17 @ 23:16:56

Time Off Btm:

2016.08.18 @ 02:50:26

TEST COMMENT: 30- IF- Slow ly built to 10"
60- IS- No blow
30- FF- Slow ly built to 11"
90- FS- Surface blow

PRESSURE SUMMARY



| Time (Min.) | Pressure (psig) | Temp (deg F) | Annotation |
|-------------|-----------------|--------------|----------------------|
| 0 | 1938.64 | 110.05 | Initial Hydro-static |
| 1 | 16.08 | 108.82 | Open To Flow (1) |
| 30 | 68.52 | 115.72 | Shut-In(1) |
| 91 | 1246.38 | 116.37 | End Shut-In(1) |
| 93 | 74.15 | 115.78 | Open To Flow (2) |
| 122 | 96.34 | 119.17 | Shut-In(2) |
| 212 | 1230.30 | 119.40 | End Shut-In(2) |
| 214 | 1907.55 | 118.80 | Final Hydro-static |

Recovery

| Length (ft) | Description | Volume (bbl) |
|-------------|-----------------|--------------|
| 125.00 | HOCM, 35%O 65%M | 0.61 |
| 100.00 | CO | 0.84 |
| | | |
| | | |
| | | |

Gas Rates

| | Choke (inches) | Pressure (psig) | Gas Rate (Mcf/d) |
|--|----------------|-----------------|------------------|
| | | | |

* Recovery from multiple tests



**TRILOBITE
TESTING, INC**

DRILL STEM TEST REPORT

FLUID SUMMARY

Suemaaur Exploration & Production, LLC

26-6S-28W Sheridan, KS

539 N. Carancahua
Suite 1100
Corpus Christi, TX 78401
ATTN: Bob Petersen

ShawnSpresserTst1-26

Job Ticket: 58064

DST#: 3

Test Start: 2016.08.17 @ 21:16:56

Mud and Cushion Information

Mud Type: Gel Chem

Mud Weight: 9.00 lb/gal

Viscosity: 55.00 sec/qt

Water Loss: 6.79 in³

Resistivity: ohm.m

Salinity: 800.00 ppm

Filter Cake: inches

Cushion Type:

Cushion Length: ft

Cushion Volume: bbl

Gas Cushion Type:

Gas Cushion Pressure: psig

Oil API:

34 deg API

Water Salinity: ppm

Recovery Information

Recovery Table

| Length ft | Description | Volume bbl |
|--------------|-----------------|---------------|
| 125.00 | HOCM, 35%O 65%M | 0.615 |
| 100.00 | CO | 0.844 |

Total Length: 225.00 ft Total Volume: 1.459 bbl

Num Fluid Samples: 0

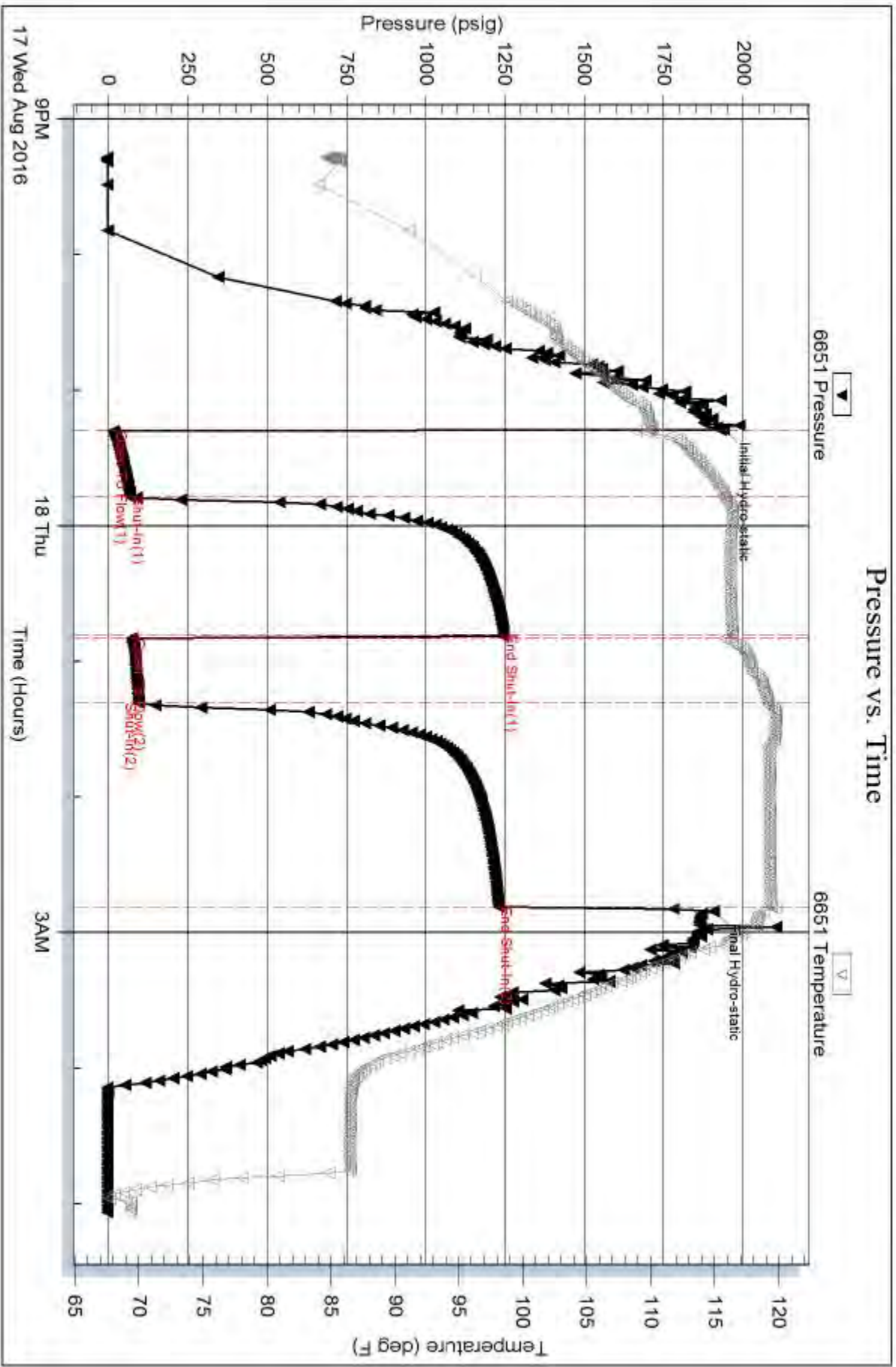
Num Gas Bombs: 0

Serial #:

Laboratory Name:

Laboratory Location:

Recovery Comments:

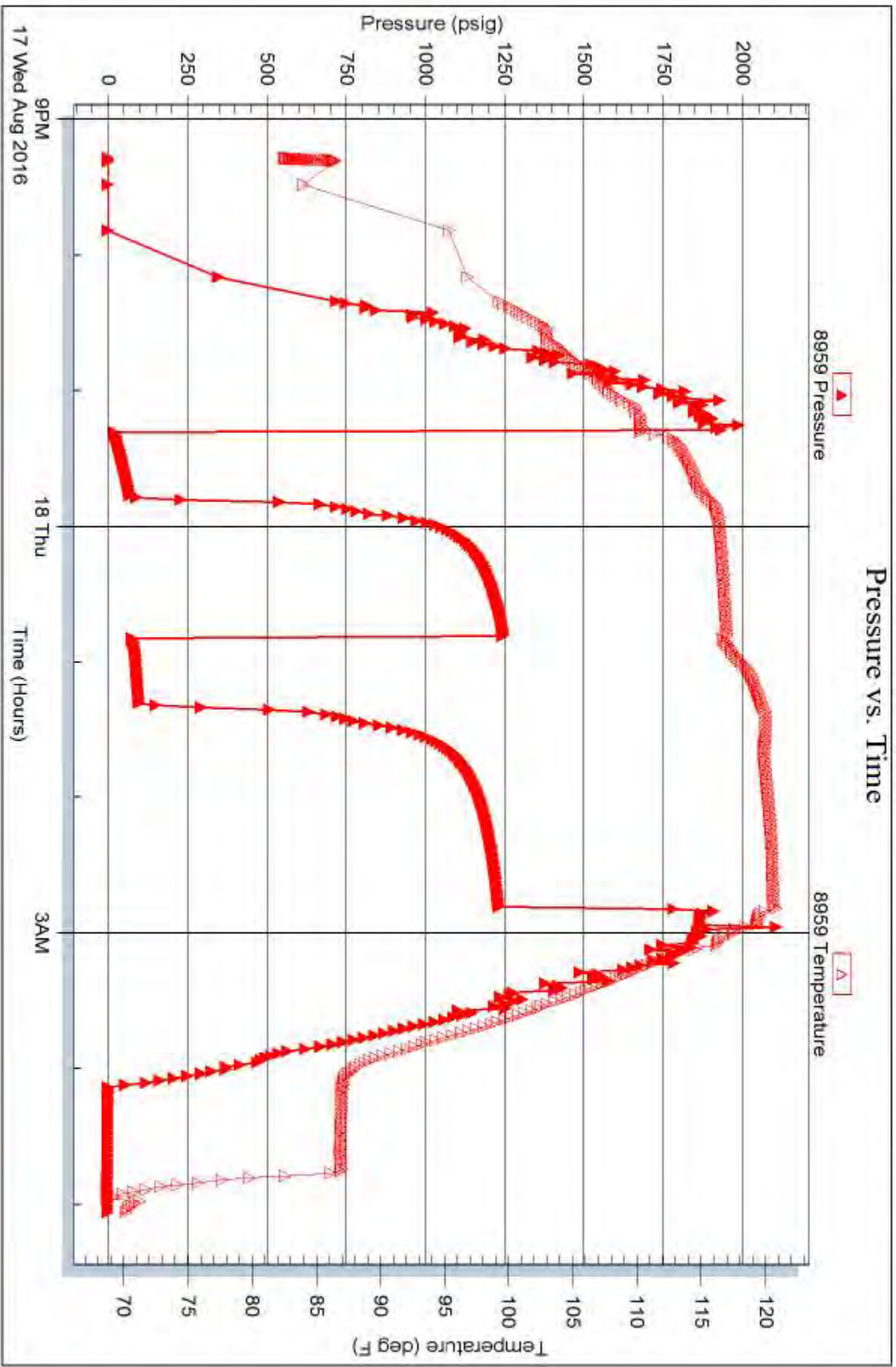


Serial #: 8959

Outside Suenor Exploration & Production, LLC

Shaw nSpresserTst1-26

DST Test Number: 3



Triobite Testing, Inc

Ref. No: 58064

Printed: 2016.08.18 @ 06:41:29



**TRILOBITE
TESTING, INC**

DRILL STEM TEST REPORT

Suemaour Exploration & Production, LLC

26-6S-28W Sheridan, KS

539 N. Carancahua
Suite 1100
Corpus Christi, TX 78401
ATTN: Bob Petersen

ShawnSpresserTst1-26

Job Ticket: 58065

DST#: 4

Test Start: 2016.08.18 @ 15:57:25

GENERAL INFORMATION:

Formation: **LKC "G"**

Deviated: No Whipstock: ft (KB)

Time Tool Opened: 18:11:25

Time Test Ended: 00:12:55

Test Type: Conventional Bottom Hole (Reset)

Tester: Brannan Lonsdale

Unit No: 73

Interval: 3966.00 ft (KB) To 3980.00 ft (KB) (TVD)

Reference Elevations: 2735.00 ft (KB)

Total Depth: 3980.00 ft (KB) (TVD)

2730.00 ft (CF)

Hole Diameter: 7.88 inches Hole Condition: Fair

KB to GR/CF: 5.00 ft

Serial #: 6651 Inside

Press@RunDepth: 84.21 psig @ 3977.00 ft (KB)

Capacity: 8000.00 psig

Start Date: 2016.08.18

End Date:

2016.08.19

Last Calib.:

2016.08.19

Start Time: 15:57:26

End Time:

00:12:55

Time On Btm:

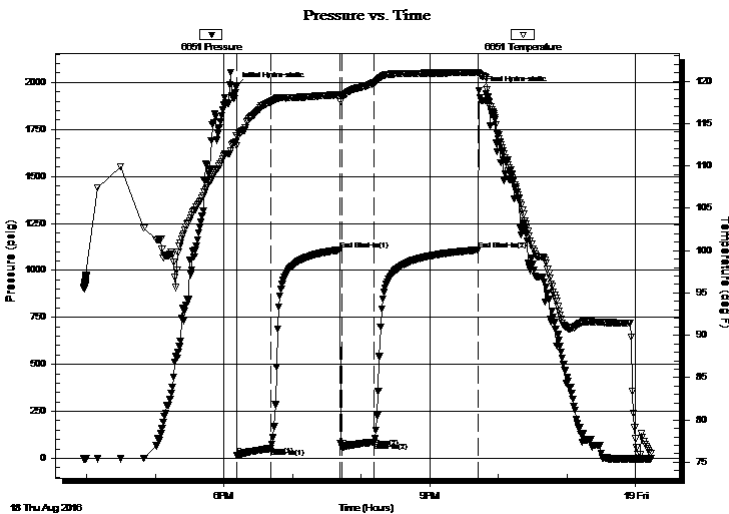
2016.08.18 @ 18:10:25

Time Off Btm:

2016.08.18 @ 21:42:55

TEST COMMENT: 30- IF- Slow ly built to 8"
60- IS- Surface blow died in 7mins
30- FF- Slow ly built to 11.5"
90- FS- Surface blow died in 9mins

PRESSURE SUMMARY



| Time (Min.) | Pressure (psig) | Temp (deg F) | Annotation |
|-------------|-----------------|--------------|----------------------|
| 0 | 1979.73 | 112.83 | Initial Hydro-static |
| 1 | 14.70 | 112.39 | Open To Flow (1) |
| 31 | 53.53 | 117.56 | Shut-In(1) |
| 91 | 1109.00 | 118.43 | End Shut-In(1) |
| 93 | 57.39 | 118.35 | Open To Flow (2) |
| 121 | 84.21 | 119.79 | Shut-In(2) |
| 212 | 1108.54 | 121.06 | End Shut-In(2) |
| 213 | 1955.00 | 120.96 | Final Hydro-static |

Recovery

| Length (ft) | Description | Volume (bbl) |
|-------------|----------------|--------------|
| 60.00 | OCM, 20%O 80%M | 0.30 |
| 130.00 | CO | 0.67 |
| 0.00 | 123' GIP | 0.00 |
| | | |
| | | |

Gas Rates

| | Choke (inches) | Pressure (psig) | Gas Rate (Mcf/d) |
|--|----------------|-----------------|------------------|
| | | | |

* Recovery from multiple tests



**TRILOBITE
TESTING, INC**

DRILL STEM TEST REPORT

Suemaar Exploration & Production, LLC

26-6S-28W Sheridan, KS

539 N. Carancahua
Suite 1100
Corpus Christi, TX 78401
ATTN: Bob Petersen

ShawnSpresserTst1-26

Job Ticket: 58065 **DST#: 4**

Test Start: 2016.08.18 @ 15:57:25

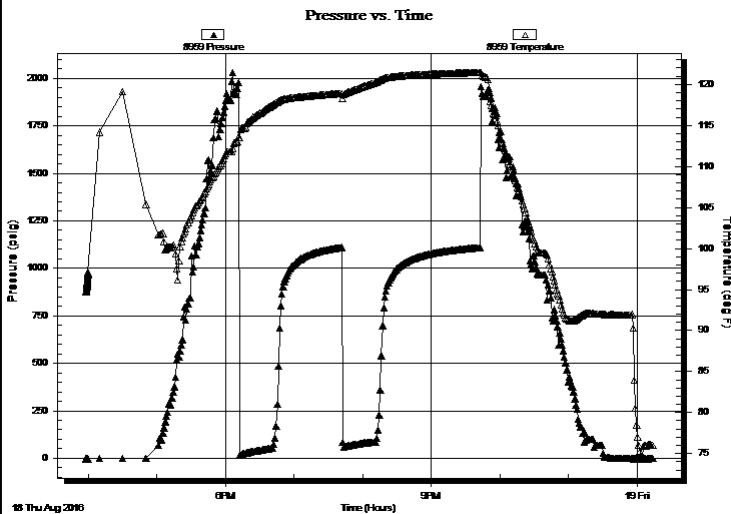
GENERAL INFORMATION:

Formation: **LKC "G"**
 Deviated: No Whipstock: ft (KB)
 Test Type: Conventional Bottom Hole (Reset)
 Time Tool Opened: 18:11:25 Tester: Brannan Lonsdale
 Time Test Ended: 00:12:55 Unit No: 73
Interval: 3966.00 ft (KB) To 3980.00 ft (KB) (TVD)
 Reference Elevations: 2735.00 ft (KB)
 Total Depth: 3980.00 ft (KB) (TVD) 2730.00 ft (CF)
 Hole Diameter: 7.88 inches Hole Condition: Fair KB to GR/CF: 5.00 ft

Serial #: 8959 Outside

Press@RunDepth: psig @ 3977.00 ft (KB) Capacity: 8000.00 psig
 Start Date: 2016.08.18 End Date: 2016.08.19 Last Calib.: 2016.08.19
 Start Time: 15:57:50 End Time: 00:13:19 Time On Btm:
 Time Off Btm:

TEST COMMENT: 30- IF- Slow ly built to 8"
 60- IS- Surface blow died in 7mins
 30- FF- Slow ly built to 11.5"
 90- FS- Surface blow died in 9mins



PRESSURE SUMMARY

| Time (Min.) | Pressure (psig) | Temp (deg F) | Annotation |
|-------------|-----------------|--------------|------------|
| | | | |
| | | | |
| | | | |
| | | | |

Recovery

| Length (ft) | Description | Volume (bbl) |
|-------------|----------------|--------------|
| 60.00 | OCM, 20%O 80%M | 0.30 |
| 130.00 | CO | 0.67 |
| 0.00 | 123' GIP | 0.00 |
| | | |
| | | |

* Recovery from multiple tests

Gas Rates

| | Choke (inches) | Pressure (psig) | Gas Rate (Mcf/d) |
|--|----------------|-----------------|------------------|
| | | | |



**TRILOBITE
TESTING, INC**

DRILL STEM TEST REPORT

FLUID SUMMARY

Suemaaur Exploration & Production, LLC

26-6S-28W Sheridan, KS

539 N. Carancahua
Suite 1100
Corpus Christi, TX 78401
ATTN: Bob Petersen

ShawnSpresserTst1-26

Job Ticket: 58065

DST#: 4

Test Start: 2016.08.18 @ 15:57:25

Mud and Cushion Information

Mud Type: Gel Chem
Mud Weight: 9.00 lb/gal
Viscosity: 53.00 sec/qt
Water Loss: 7.20 in³
Resistivity: ohm.m
Salinity: 800.00 ppm
Filter Cake: inches

Cushion Type:
Cushion Length: ft
Cushion Volume: bbl
Gas Cushion Type:
Gas Cushion Pressure: psig

Oil API: 33 deg API
Water Salinity: ppm

Recovery Information

Recovery Table

| Length ft | Description | Volume bbl |
|--------------|----------------|---------------|
| 60.00 | OCM, 20%O 80%M | 0.295 |
| 130.00 | CO | 0.667 |
| 0.00 | 123' GIP | 0.000 |

Total Length: 190.00 ft Total Volume: 0.962 bbl

Num Fluid Samples: 0

Num Gas Bombs: 0

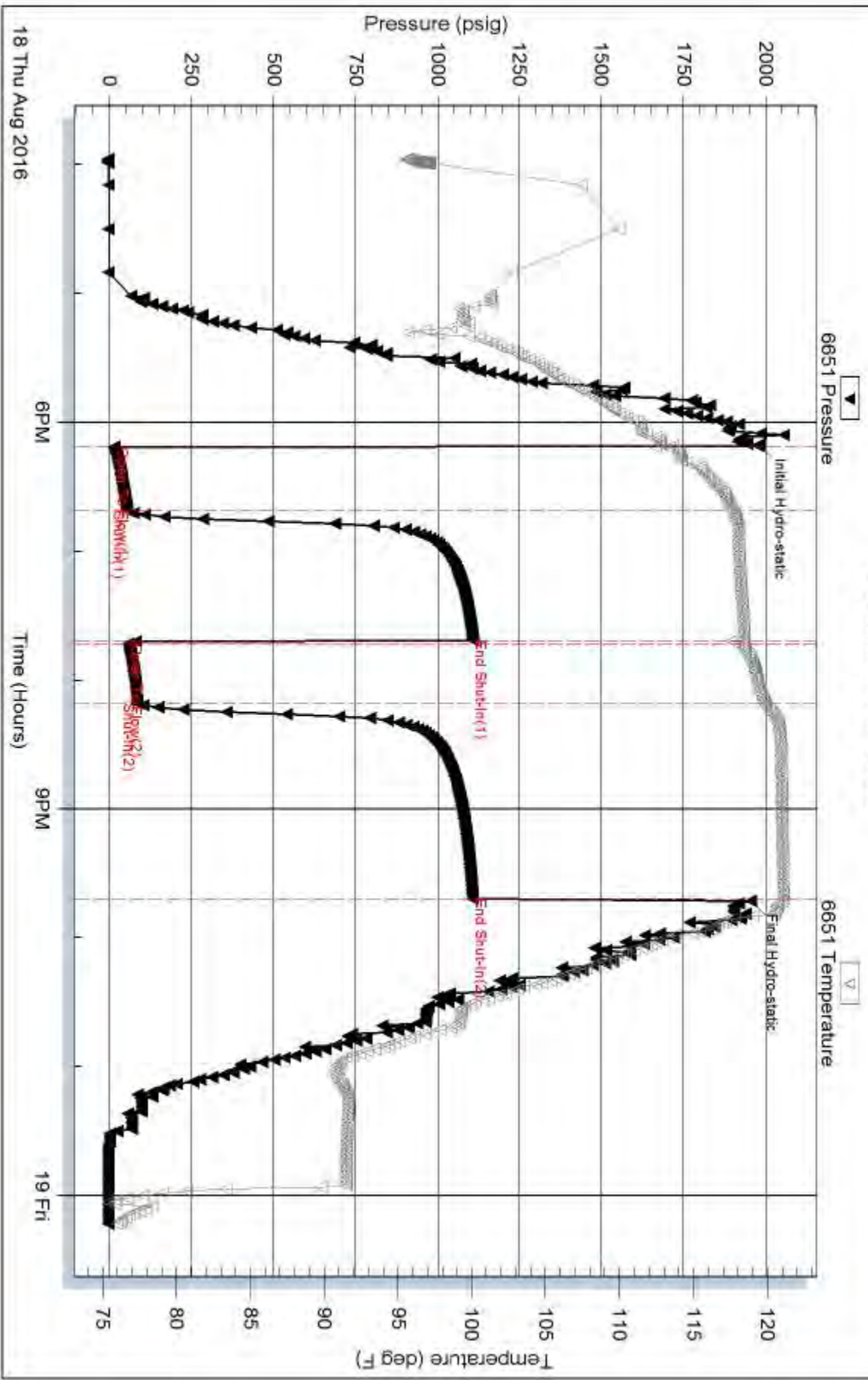
Serial #:

Laboratory Name:

Laboratory Location:

Recovery Comments:

Pressure vs. Time





TRILOBITE TESTING, INC

DRILL STEM TEST REPORT

Suema Exploration & Production, LLC

26-6S-28W Sheridan, KS

539 N. Carancahua
Suite 1100
Corpus Christi, TX 78401
ATTN: Bob Petersen

ShawnSpresserTst1-26

Job Ticket: 58066

DST#: 5

Test Start: 2016.08.19 @ 06:55:42

GENERAL INFORMATION:

Formation: **Lower G**

Deviated: No Whipstock: ft (KB)

Time Tool Opened: 09:29:12

Time Test Ended: 20:08:12

Test Type: Conventional Bottom Hole (Reset)

Tester: Brannan Lonsdale

Unit No: 73

Interval: 3981.00 ft (KB) To 3998.00 ft (KB) (TVD)

Reference Elevations: 2735.00 ft (KB)

Total Depth: 3998.00 ft (KB) (TVD)

2730.00 ft (CF)

Hole Diameter: 7.88 inches Hole Condition: Fair

KB to GR/CF: 5.00 ft

Serial #: 6651 Inside

Press@RunDepth: 619.10 psig @ 3995.00 ft (KB)

Capacity: 8000.00 psig

Start Date: 2016.08.19 End Date: 2016.08.19

Last Calib.: 2016.08.19

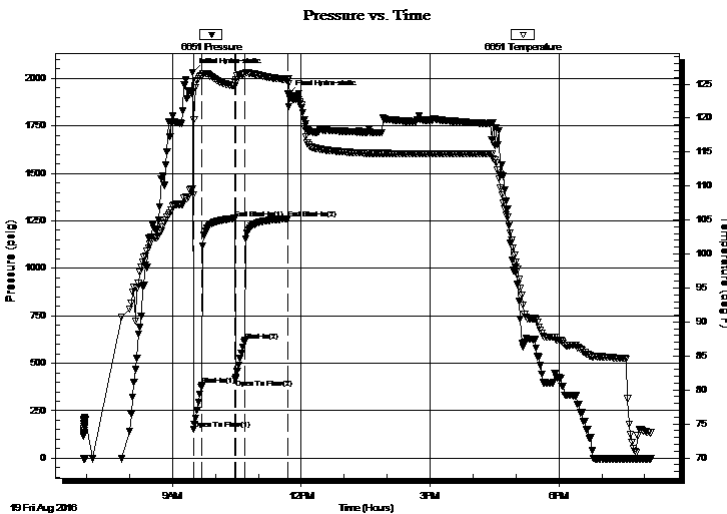
Start Time: 06:55:43 End Time: 20:08:12

Time On Btm: 2016.08.19 @ 09:28:12

Time Off Btm: 2016.08.19 @ 11:41:42

TEST COMMENT: 15- IF- BOB 2mins
45- IS- Surface blow died in 23mins
15- FF- BOB 2mins
60- FSI- .5" blow

PRESSURE SUMMARY



| Time (Min.) | Pressure (psig) | Temp (deg F) | Annotation |
|-------------|-----------------|--------------|----------------------|
| 0 | 2031.54 | 109.59 | Initial Hydro-static |
| 1 | 153.33 | 108.75 | Open To Flow (1) |
| 13 | 382.36 | 126.22 | Shut-In(1) |
| 59 | 1262.77 | 124.71 | End Shut-In(1) |
| 60 | 417.00 | 125.17 | Open To Flow (2) |
| 73 | 619.10 | 126.46 | Shut-In(2) |
| 133 | 1261.57 | 125.62 | End Shut-In(2) |
| 134 | 1916.53 | 125.83 | Final Hydro-static |

Recovery

| Length (ft) | Description | Volume (bbl) |
|-------------|----------------------|--------------|
| 1198.00 | OCMW, 10%O 75%W 15%M | 15.25 |
| 85.00 | WOCM, 20%O 30%W 50%M | 1.20 |
| 10.00 | CO | 0.14 |
| 0.00 | 95' GIP | 0.00 |
| | | |
| | | |

* Recovery from multiple tests

Gas Rates

| Choke (inches) | Pressure (psig) | Gas Rate (Mcf/d) |
|----------------|-----------------|------------------|
| | | |



**TRILOBITE
TESTING, INC**

DRILL STEM TEST REPORT

FLUID SUMMARY

Suemaour Exploration & Production, LLC

26-6S-28W Sheridan, KS

539 N. Carancahua
Suite 1100
Corpus Christi, TX 78401
ATTN: Bob Petersen

ShawnSpresserTst1-26

Job Ticket: 58066

DST#: 5

Test Start: 2016.08.19 @ 06:55:42

Mud and Cushion Information

Mud Type: Gel Chem
Mud Weight: 9.00 lb/gal
Viscosity: 53.00 sec/qt
Water Loss: 7.20 in³
Resistivity: ohm.m
Salinity: 800.00 ppm
Filter Cake: inches

Cushion Type:
Cushion Length: ft
Cushion Volume: bbl
Gas Cushion Type:
Gas Cushion Pressure: psig

Oil API: 31 deg API
Water Salinity: 65000 ppm

Recovery Information

Recovery Table

| Length ft | Description | Volume bbl |
|--------------|----------------------|---------------|
| 1198.00 | OCMW, 10%O 75%W 15%M | 15.251 |
| 85.00 | WOCM, 20%O 30%W 50%M | 1.205 |
| 10.00 | CO | 0.142 |
| 0.00 | 95' GIP | 0.000 |

Total Length: 1293.00 ft Total Volume: 16.598 bbl

Num Fluid Samples: 0

Num Gas Bombs: 0

Serial #:

Laboratory Name:

Laboratory Location:

Recovery Comments:

Serial #: 6651

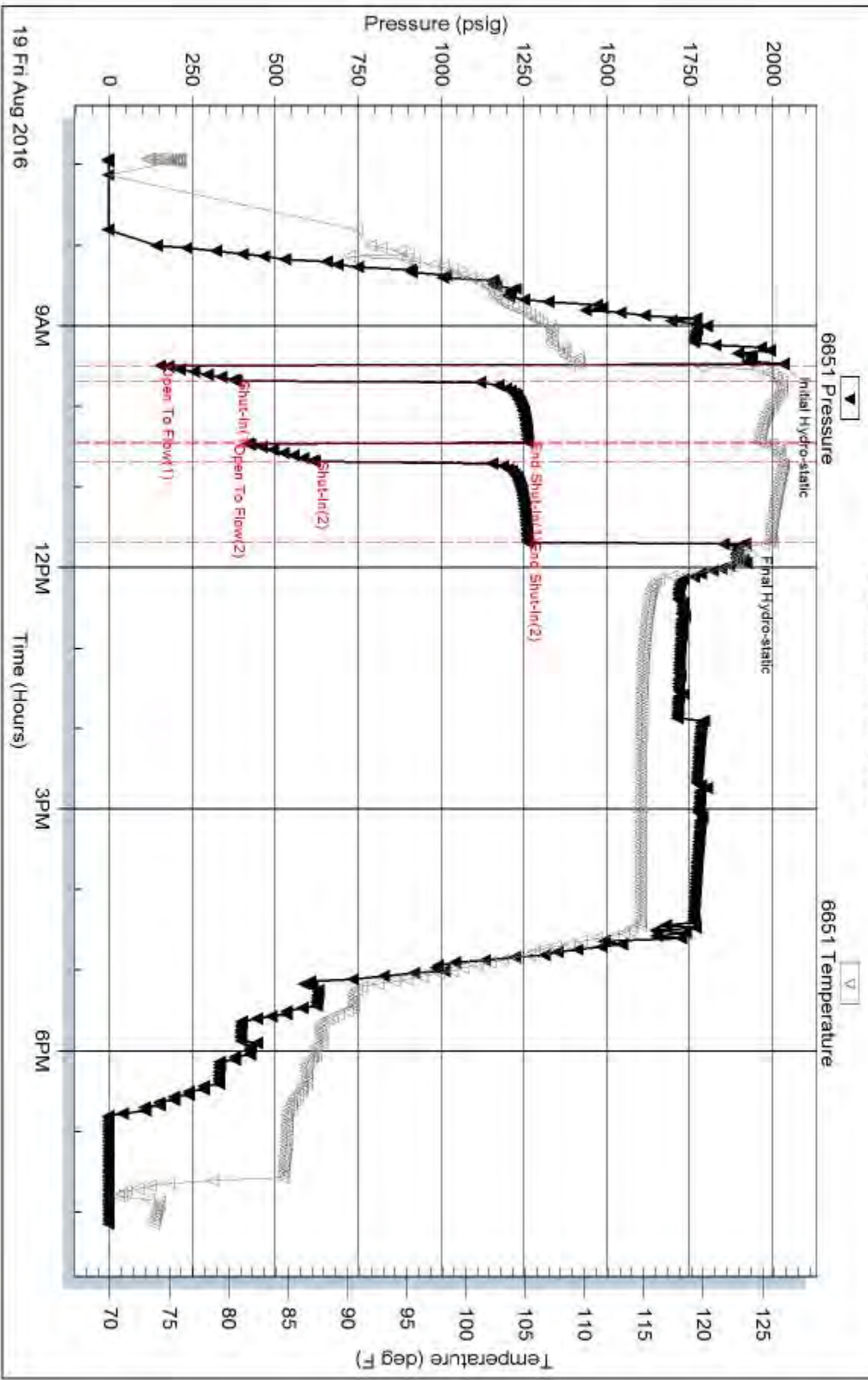
Inside

Suener Exploration & Production, LLC

Shaw nSpressoTst1-26

DST Test Number: 5

Pressure vs. Time

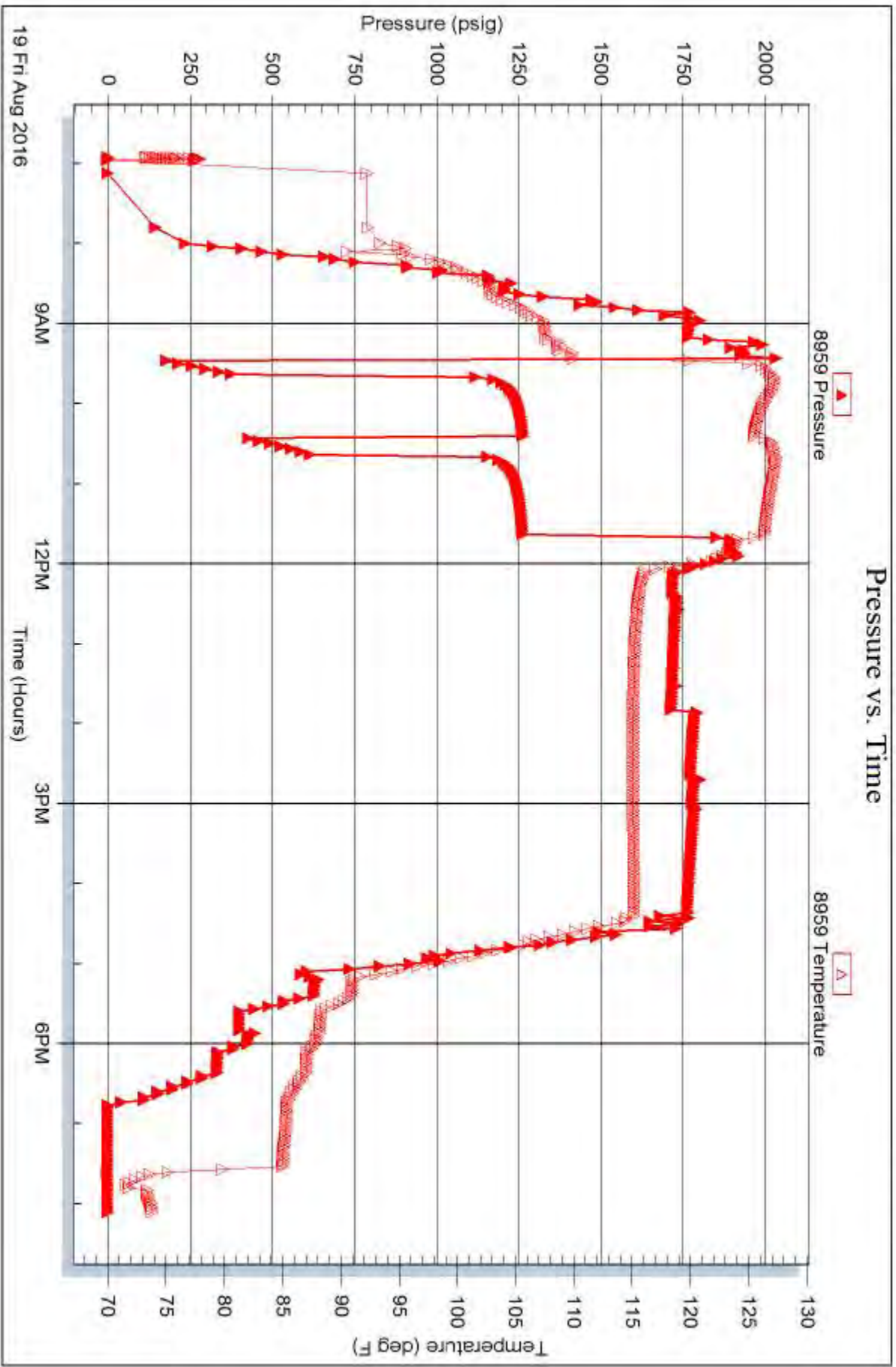


Serial #: 8959

Outside Suenor Exploration & Production, LLC

Shaw nSpresserTst1-26

DST Test Number: 5





**TRILOBITE
TESTING, INC**

DRILL STEM TEST REPORT

Suemaur Exploration & Production, LLC

26-6S-28W Sheridan, KS

539 N. Carancahua
Suite 1100
Corpus Christi, TX 78401
ATTN: Bob Petersen

ShawnSpresserTst1-26

Job Ticket: 58067

DST#: 6

Test Start: 2016.08.20 @ 03:49:07

GENERAL INFORMATION:

Formation: **LKC "H"**

Deviated: No Whipstock: ft (KB)

Time Tool Opened: 06:47:07

Time Test Ended: 11:45:37

Test Type: Conventional Bottom Hole (Reset)

Tester: Brannan Lonsdale

Unit No: 73

Interval: 4013.00 ft (KB) To 4024.00 ft (KB) (TVD)

Reference Elevations: 2735.00 ft (KB)

Total Depth: 4024.00 ft (KB) (TVD)

2730.00 ft (CF)

Hole Diameter: 7.88 inches Hole Condition: Fair

KB to GR/CF: 5.00 ft

Serial #: 6651

Inside

Press@RunDepth: 662.28 psig @ 4021.00 ft (KB)

Capacity: 8000.00 psig

Start Date: 2016.08.20

End Date:

2016.08.20

Last Calib.:

2016.08.20

Start Time: 03:49:08

End Time:

11:45:37

Time On Btm:

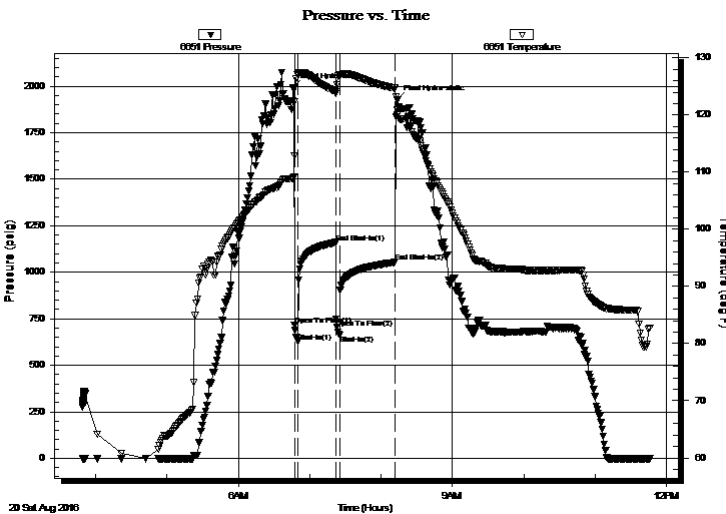
2016.08.20 @ 06:46:07

Time Off Btm:

2016.08.20 @ 08:13:07

TEST COMMENT: 05- IF- BOB 5secs
30- IS- Slowly built to 10"
05- FF- BOB 3secs
45- FSI- BOB 41mins

PRESSURE SUMMARY



| Time (Min.) | Pressure (psig) | Temp (deg F) | Annotation |
|-------------|-----------------|--------------|----------------------|
| 0 | 1994.24 | 109.03 | Initial Hydro-static |
| 1 | 717.55 | 112.83 | Open To Flow (1) |
| 4 | 627.27 | 127.19 | Shut-In(1) |
| 36 | 1159.70 | 124.13 | End Shut-In(1) |
| 36 | 746.79 | 123.74 | Open To Flow (2) |
| 39 | 662.28 | 126.98 | Shut-In(2) |
| 86 | 1053.73 | 124.69 | End Shut-In(2) |
| 87 | 1927.48 | 120.90 | Final Hydro-static |

Recovery

| Length (ft) | Description | Volume (bbl) |
|-------------|----------------|--------------|
| 1511.00 | CGO, 20%G 80%O | 19.69 |
| 0.00 | 504' GIP | 0.00 |
| | | |
| | | |
| | | |

* Recovery from multiple tests

Gas Rates

| | Choke (inches) | Pressure (psig) | Gas Rate (Mcf/d) |
|--|----------------|-----------------|------------------|
| | | | |



**TRILOBITE
TESTING, INC**

DRILL STEM TEST REPORT

FLUID SUMMARY

Suemaaur Exploration & Production, LLC

26-6S-28W Sheridan, KS

539 N. Carancahua
Suite 1100
Corpus Christi, TX 78401
ATTN: Bob Petersen

ShawnSpresserTst1-26

Job Ticket: 58067

DST#: 6

Test Start: 2016.08.20 @ 03:49:07

Mud and Cushion Information

Mud Type: Gel Chem

Mud Weight: 9.00 lb/gal

Viscosity: 54.00 sec/qt

Water Loss: 6.40 in³

Resistivity: ohm.m

Salinity: 1200.00 ppm

Filter Cake: inches

Cushion Type:

Cushion Length: ft

Cushion Volume: bbl

Gas Cushion Type:

Gas Cushion Pressure: psig

Oil API:

34 deg API

Water Salinity: ppm

Recovery Information

Recovery Table

| Length ft | Description | Volume bbl |
|--------------|----------------|---------------|
| 1511.00 | CGO, 20%G 80%O | 19.688 |
| 0.00 | 504' GIP | 0.000 |

Total Length: 1511.00 ft Total Volume: 19.688 bbl

Num Fluid Samples: 0

Num Gas Bombs: 0

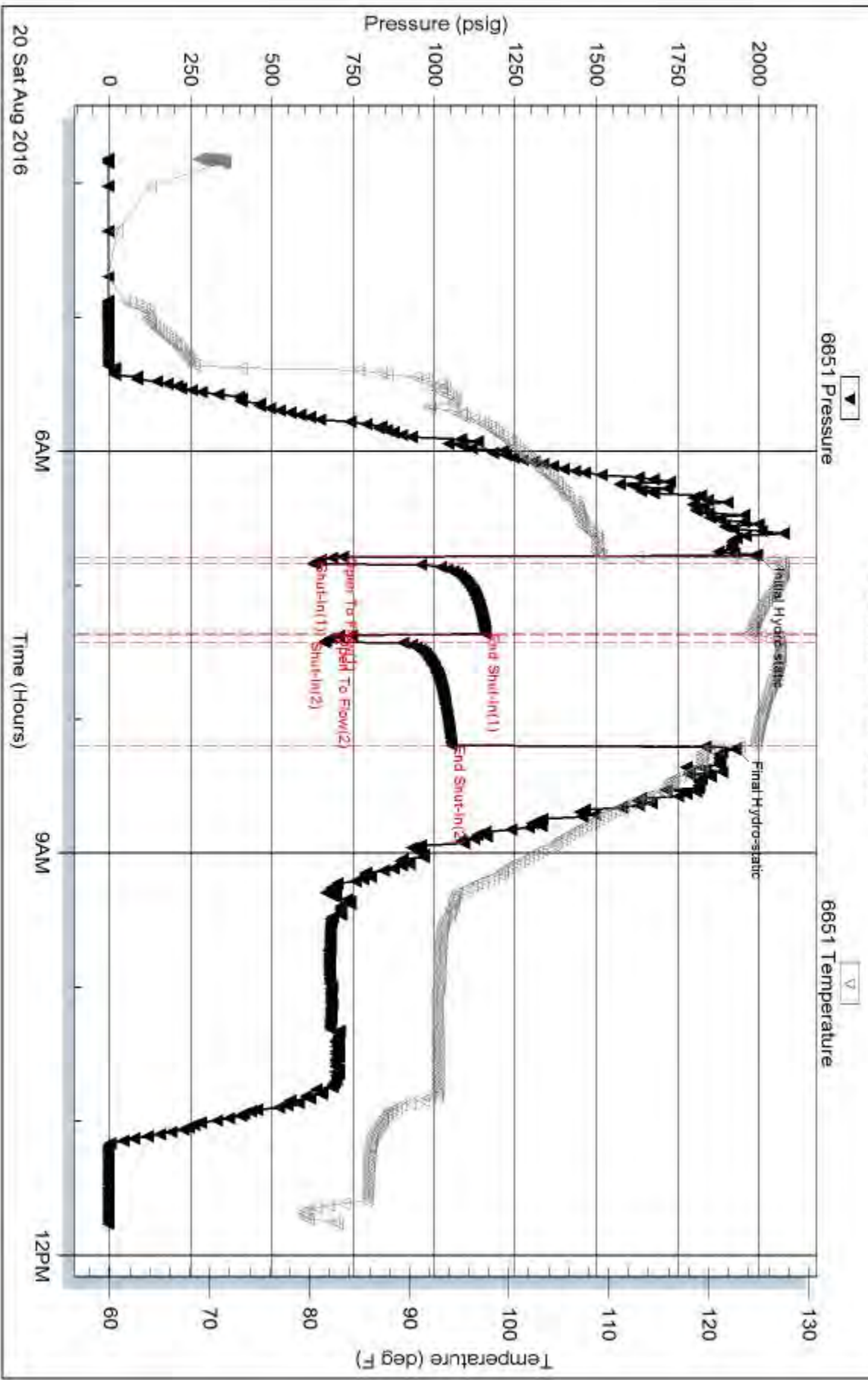
Serial #:

Laboratory Name:

Laboratory Location:

Recovery Comments:

Pressure vs. Time

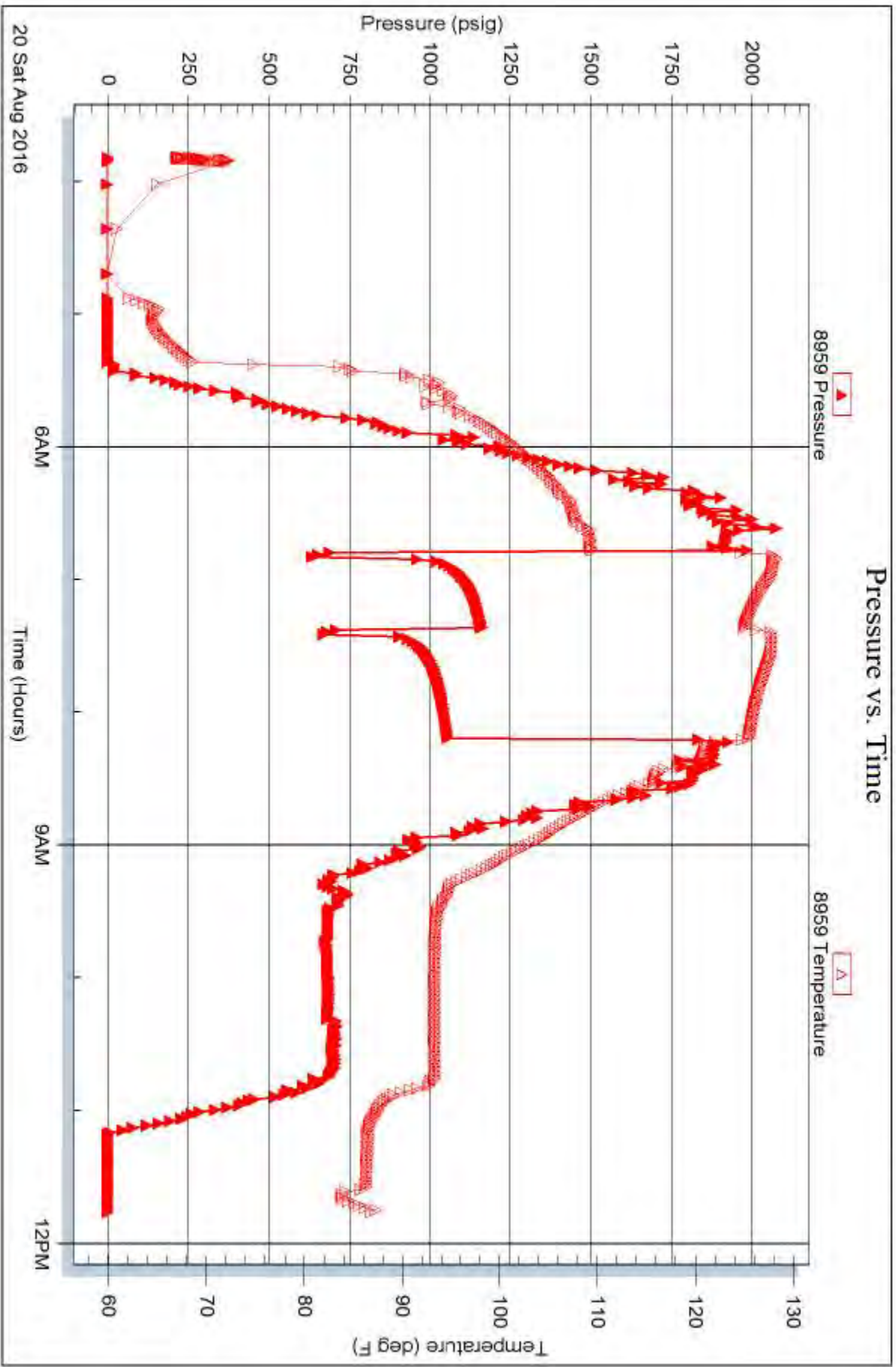


Serial #: 8959

Outside Suenaur Exploration & Production, LLC

Shaw nSpresserTst1-26

DST Test Number: 6



Triobite Testing, Inc

Ref. No: 58067

Printed: 2016.08.20 @ 12:08:01



**TRILOBITE
TESTING, INC**

DRILL STEM TEST REPORT

Suemaour Exploration & Production, LLC

26-6S-28W Sheridan, KS

539 N. Carancahua
Suite 1100
Corpus Christi, TX 78401
ATTN: Bob Petersen

ShawnSpresserTst1-26

Job Ticket: 58068

DST#: 7

Test Start: 2016.08.21 @ 14:20:24

GENERAL INFORMATION:

Formation: **Lecompton**

Deviated: No Whipstock: ft (KB)

Time Tool Opened: 16:58:24

Time Test Ended: 21:19:54

Test Type: Conventional Straddle (Reset)

Tester: Brannan Lonsdale

Unit No: 73

Interval: 3781.00 ft (KB) To 3799.00 ft (KB) (TVD)

Reference Elevations: 2735.00 ft (KB)

Total Depth: 4202.00 ft (KB) (TVD)

2730.00 ft (CF)

Hole Diameter: 7.88 inches Hole Condition: Fair

KB to GR/CF: 5.00 ft

Serial #: 6651 Inside

Press@RunDepth: 53.36 psig @ 3782.00 ft (KB)

Capacity: 8000.00 psig

Start Date: 2016.08.21 End Date: 2016.08.21

Last Calib.: 2016.08.21

Start Time: 14:20:25 End Time: 21:19:54

Time On Btm: 2016.08.21 @ 16:57:54

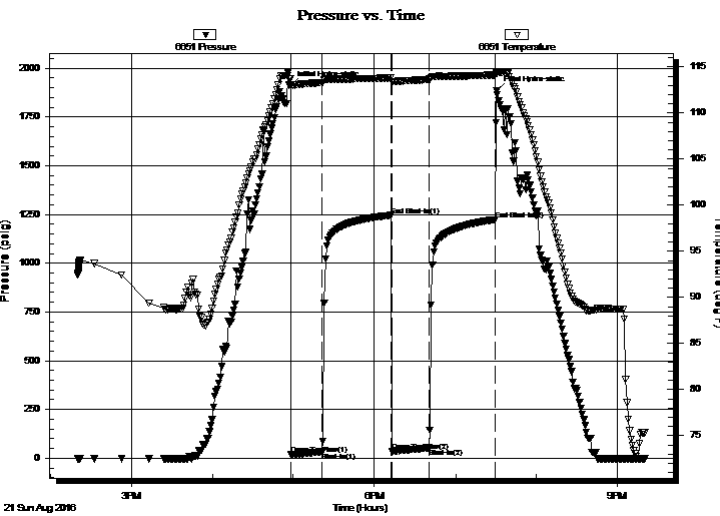
Time Off Btm: 2016.08.21 @ 19:30:24

TEST COMMENT: 30- IF- Slowly built to 1.5"

45- IS- No blow

30- FF- No blow

45- FSI- No blow



PRESSURE SUMMARY

| Time (Min.) | Pressure (psig) | Temp (deg F) | Annotation |
|-------------|-----------------|--------------|----------------------|
| 0 | 1909.81 | 113.69 | Initial Hydro-static |
| 1 | 19.37 | 113.03 | Open To Flow (1) |
| 24 | 33.19 | 113.29 | Shut-In(1) |
| 75 | 1245.73 | 113.81 | End Shut-In(1) |
| 75 | 34.85 | 113.41 | Open To Flow (2) |
| 103 | 53.36 | 113.60 | Shut-In(2) |
| 152 | 1223.90 | 114.12 | End Shut-In(2) |
| 153 | 1884.10 | 114.35 | Final Hydro-static |

Recovery

| Length (ft) | Description | Volume (bbl) |
|-------------|---------------|--------------|
| 110.00 | MW, 10%M 90%W | 0.54 |
| 1.00 | CO | 0.00 |
| | | |
| | | |
| | | |

* Recovery from multiple tests

Gas Rates

| | Choke (inches) | Pressure (psig) | Gas Rate (Mcf/d) |
|--|----------------|-----------------|------------------|
| | | | |



**TRILOBITE
TESTING, INC**

DRILL STEM TEST REPORT

FLUID SUMMARY

Suemaaur Exploration & Production, LLC

26-6S-28W Sheridan, KS

539 N. Carancahua
Suite 1100
Corpus Christi, TX 78401
ATTN: Bob Petersen

ShawnSpresserTst1-26

Job Ticket: 58068 **DST#: 7**

Test Start: 2016.08.21 @ 14:20:24

Mud and Cushion Information

Mud Type: Gel Chem
Mud Weight: 9.00 lb/gal
Viscosity: 56.00 sec/qt
Water Loss: 6.40 in³
Resistivity: ohm.m
Salinity: 1500.00 ppm
Filter Cake: inches

Cushion Type:
Cushion Length: ft
Cushion Volume: bbl
Gas Cushion Type:
Gas Cushion Pressure: psig

Oil API: deg API
Water Salinity: 17000 ppm

Recovery Information

Recovery Table

| Length ft | Description | Volume bbl |
|--------------|---------------|---------------|
| 110.00 | MW, 10%M 90%W | 0.541 |
| 1.00 | CO | 0.005 |

Total Length: 111.00 ft Total Volume: 0.546 bbl

Num Fluid Samples: 0 Num Gas Bombs: 0 Serial #:

Laboratory Name: Laboratory Location:

Recovery Comments:

Serial #: 6651

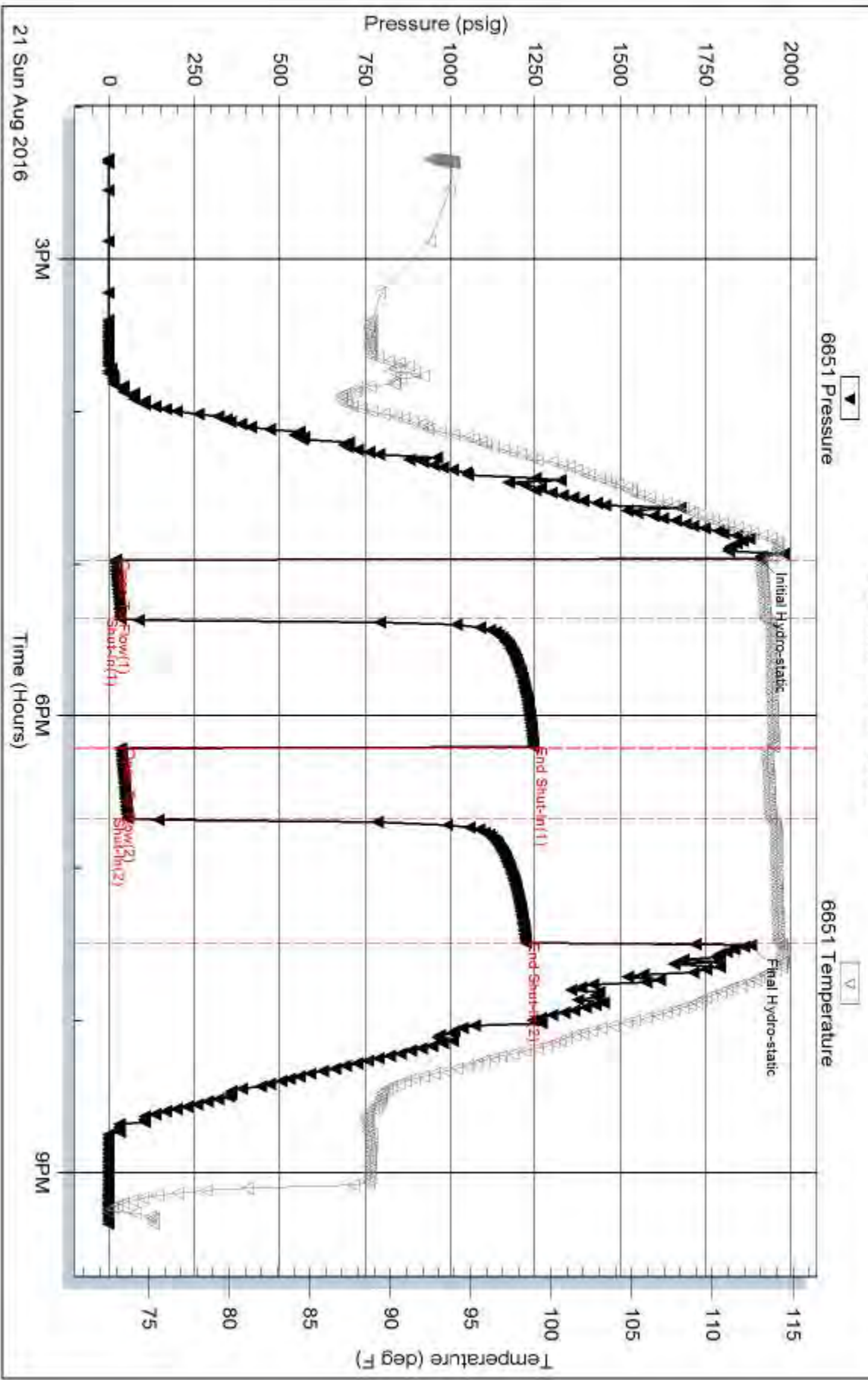
Inside

Suenaur Exploration & Production, LLC

Shaw nSpressoTst1-26

DST Test Number: 7

Pressure vs. Time



Triobite Testing, Inc

Ref. No: 58068

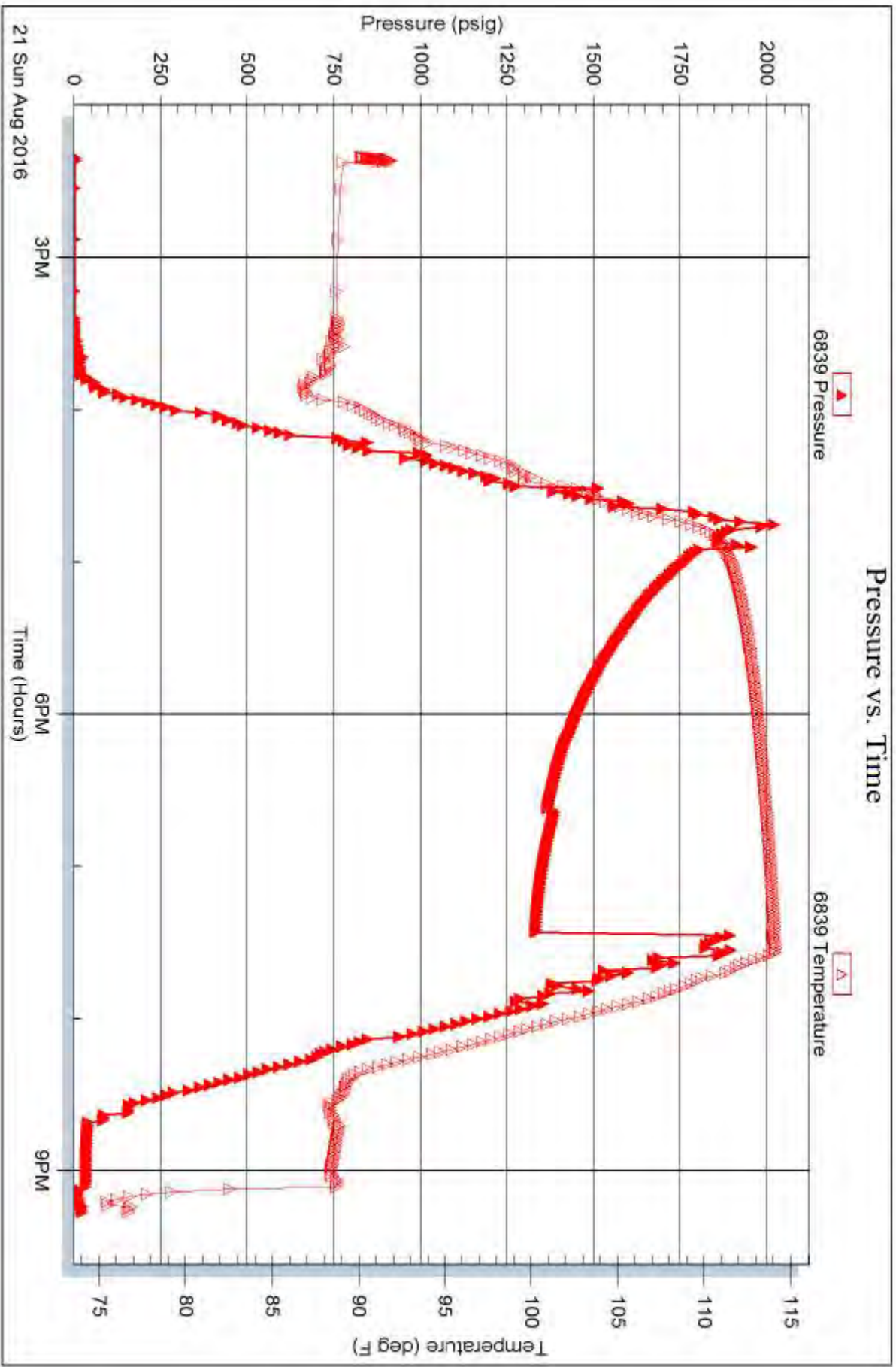
Printed: 2016.08.21 @ 21:40:13

Serial #: 6839

Below (Strata) Exploration & Production, LLC

Shaw nSpresserTst1-26

DST Test Number: 7



Triobite Testing, Inc

Ref. No: 58068

Printed: 2016.08.21 @ 21:40:13

Serial #: 8959

Outside Suenor Exploration & Production, LLC

Shaw nSpresserTst1-26

DST Test Number: 7

