

GEOLOGIST'S REPORT

DRILLING TIME AND SAMPLE LOG

SUEMAUR EXPLORATION & PROD., LLC
SHAWN SPRESSER TRUST. #1-26
SEC. 26 TWP 6S RGE 28W
NE SW SE SW
578' FSL & 1837' FWL
SHERIDAN COUNTY, KANSAS
API: 15-179-21419-00-00

ELEVATION
KB: 2735
GL: 2730
LOG MEASURED FROM: KB

SURFACE CASING
8 5/8" Set @ 345 KB
W/300 SX 3% CC 2%gel
PRODUCTION CASING
5 1/2"

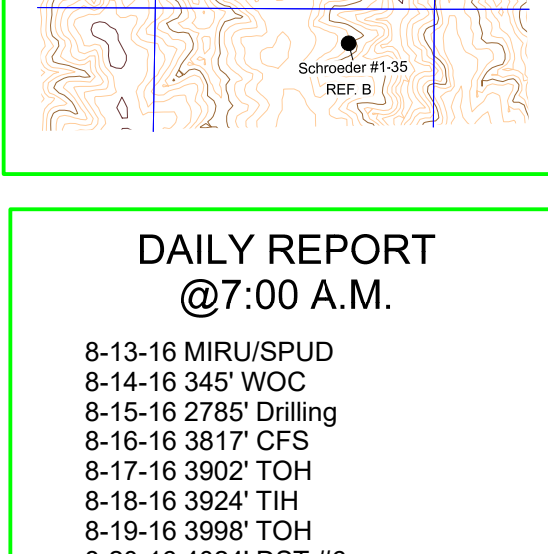
DRILLING CONTR.: MURFIN RIG #7
SPUD: 08-13-2016 COMP: 08-21-2016
MUD UP: 3050' TYPE MUD: CHEM.
DRILL TIME: 3300' to RTD
RTD: 4200' LTD: 4202'
SAMPLES TAKEN: 3350' to RTD
GEOLOGIST: ROBERT J. PETERSEN

WELL LOG SURVEYS
ARRAY INDUCTION/
CN-DL-GR
MICROLOG
BHCS

ELECTRIC LOG TOPS

FORMATION	DEPTH	DATUM
Stone Corral	2487	268
Base Stone Corral	2502	233
Foraker	3356	-921
Stoller	3525	-790
Howard	3602	-867
Topeka	3650	-915
Tecumseh SD	3746	-1011
Lecompton	3780	-1045
Oread	3808	-1073
Heebner	3849	-1114
Toronto	3877	-1142
Lansing	3894	-1159
C Zone	3923	-1188
G Zone	3974	-1239
Lower G por	3988	-1253
Muncie Cr. Shale	3988	-1263
H Zone	4010	-1275
J Zone	4047	-1312
Stark	4050	-1315
K Zone	4069	-1334
L Zone	4088	-1353
BKC	4099	-1364
Marmaton	4117	-1382
RTD	4200	-1465

LOCATION MAP



REFERENCE WELL A:

API 15-179-21414-00-00
 Suemaur Exploration & Prod. Co
 Schrodner #1
 365' FSL & 2246' FEL
 26-6-28W
 Sheridan County, KS

REFERENCE WELL B:

API 15-179-21416-00-00
 Suemaur Exploration & Prod. Co
 Schrodner #1-35
 685' FNL & 1603' FEL
 35-6-28W
 Sheridan County, KS

DAILY REPORT @7:00 A.M.

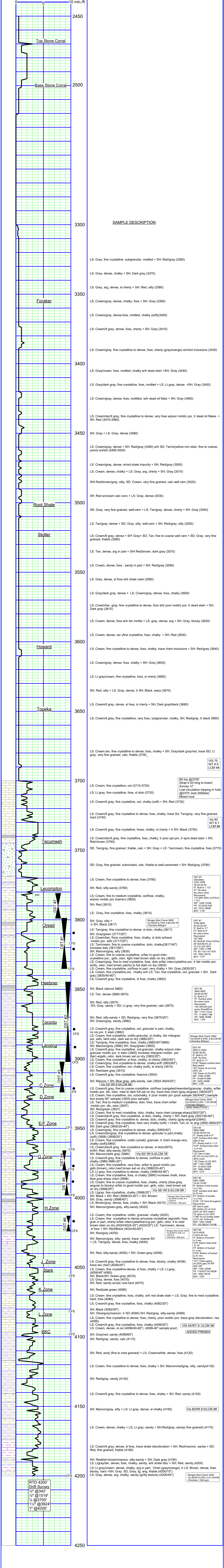
8-13-16 MIRU/SPUD
 8-14-16 345' WOC
 8-15-16 2785' Drilling
 8-16-16 3817' CFS
 8-17-16 3902' TOH
 8-18-16 3924' TOH
 8-19-16 3998' TOH
 8-20-16 4024' DST #6
 8-21-16 4200' RTD TOH for log

REMARKS AND RECOMMENDATIONS

The engineer will run production casing to further test this well for commercial production.

REMARKS AND RECOMMENDATIONS

8-21-16 4200' RTD TOH for log



Vis 75
WT 8.9
LCM #

Vis 80
WT 8.7
LCM #

DST #7
3781-3799
30-45-30-45
IF: Built to 1 1/2"
FF: No blow
No return blow
Recovered:
157' MW
63' WOCM 5%oil/20%w
48' SOCM 5% oil
15' CO (33' API)
SIP: 1185-1179#
FP: 16-69714-60#
HP: 1852-1831#
BHT: 1147'

DST #2
3845-3902
30-40-45-90"
IF: Built to 11"
FF: Built to 9"
No return blow
Recovered:
130' SWCM w/oil
spots 2%w/80%w
SIP: 1175-1121#
FP: 17-44951-79#
HP: 1886-1838#
BHT: 1155'

DST #3
3902 to 3924
30-40-30-90
IF: Built to 10"
FF: Built to 11"
FCIP: Steady surface blow
Recovered:
100' Clean oil (34 API)
SIP: 1246-1239#
FP: 15-69714-60#
HP: 1839-1908#
BHT: 1147'

DST #4
3966-3987
30-40-30-90
IF: Bottom of the bucket
in 2 min.
ICIP: Surface blow died
in 9 min.
Recovered:
129' Gas in pipe
60' Oil cut mud (20% oil
100% clean oil (33 API)
SIP: 1109-1108#
FP: 15-5457-64#
HP: 1980-1955#
BHT: 1215'

DST #5
3998-4024
5-30-45-90"
IF: Bottom of bucket
in 5 sec.
ICIP: Return blow built
to 10"
FF: Bottom of bucket
in 3 sec.
FCIP: Bottom of bucket
in 4 min.
Recovered:
1511' Clean gassy oil
(20% gas) 34 API
SIP: 1160-1054#
FP: 718-627747-602#
HP: 1094-1027#
BHT: 125F'

DST #6
4013-4024
5-30-45-90"
IF: Bottom of bucket
in 5 sec.
ICIP: Return blow built
to 10"
FF: Bottom of bucket
in 3 sec.
FCIP: Bottom of bucket
in 4 min.
Recovered:
1511' Clean gassy oil
(20% gas) 34 API
SIP: 1160-1054#
FP: 718-627747-602#
HP: 1094-1027#
BHT: 125F'

DST #8
4013-4024
5-30-45-90"
IF: Bottom of bucket
in 5 sec.
ICIP: Return blow built
to 10"
FF: Bottom of bucket
in 3 sec.
FCIP: Bottom of bucket
in 4 min.
Recovered:
1511' Clean gassy oil
(20% gas) 34 API
SIP: 1160-1054#
FP: 718-627747-602#
HP: 1094-1027#
BHT: 125F'

DST #9
4013-4024
5-30-45-90"
IF: Bottom of bucket
in 5 sec.
ICIP: Return blow built
to 10"
FF: Bottom of bucket
in 3 sec.
FCIP: Bottom of bucket
in 4 min.
Recovered:
1511' Clean gassy oil
(20% gas) 34 API
SIP: 1160-1054#
FP: 718-627747-602#
HP: 1094-1027#
BHT: 125F'

DST #10
4013-4024
5-30-45-90"
IF: Bottom of bucket
in 5 sec.
ICIP: Return blow built
to 10"
FF: Bottom of bucket
in 3 sec.
FCIP: Bottom of bucket
in 4 min.
Recovered:
1511' Clean gassy oil
(20% gas) 34 API
SIP: 1160-1054#
FP: 718-627747-602#
HP: 1094-1027#
BHT: 125F'