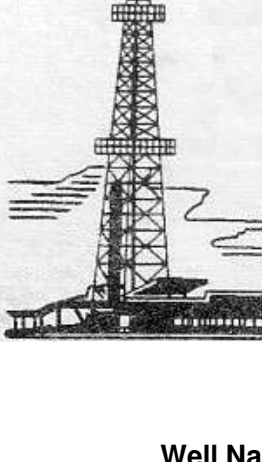


WELLSITE GEOLOGIST'S REPORT

RENE HUSTEAD
CONSULTANT GEOLOGIST



Scale 1:240 (5"=100') Imperial
Measured Depth Log

Well Name: **Roberts Phillips No 1-6**
 Well Id: **Sec 6-T19S-R13W**
 Location: **15-009-26060-0000** Region: **Barton Co**
 License Number: **Nov 24 2014** Drilling Completed: **Dec 5 2014**
 Spud Date: **1620' FNL, 285' FEL, 30' N., 45' E. of C NE SE SE**
 Surface Coordinates: **VERTICAL**
 Bottom Hole Coordinates:
 Ground Elevation (ft): **1876'** K.B. Elevation (ft): **1884'**
 Logged Interval (ft): **1600'** To: **3650'** Total Depth (ft): **3650'**
 Formation: **LANSING/KC AND ARBUCKLE**
 Type of Drilling Fluid: **STARCH/CHEMICAL**

Printed by WellSight Log Viewer from WellSight Systems 1-800-447-1534 www.WellSight.com

OPERATOR:

Company: **F.G. Holl Company LLC**
 Address: **9431 E. Central, Suite 100**
Wichita, Kansas 67206

DRILLING CONTRACTOR:

DUKE RIG #2
 Double derrick; drill pipe 4.5' X H (16.6#); collars 6.25 x2.25 x482'; Bit #2 7 7/8, J2HA20QL #1410643, 3-15's;
 Reference datum 8 ft above ground level. Poor Boy's (Martin- Decker) mechanical geologist. Dion Vasquez
 -Toolpusher

SURFACE CASING:

Surface casing -8 5/8 inches set at with saxes of cement
 Production casing-5 1/2 inches set at with saxes of cement

CIRCULATION SYSTEM:

Pump Make: EWCO,Pump model: 14W400, liner size 6 ,stroke 14. Starch mud @ 1700' to 2608', Chemical mud @ 2608' to TD
 Mud/Co/Service Mud, Inc.-Rick Hughes-Great Bend, Ks-620-282-0556

GAS DETECTION SYSTEM:

MBC Well Logging and Leasing -Analog Gas Detection.

OPEN HOLE LOGS:

DN (PE)-HIGH RES FROM B/KC TO TD-DOLO MATRIX AND FRACFINDER OVER ARBUCKLE, DI (SP)-GAMMA RAY FROM SURFACE TO TD, ML-Sonic, Fracfinder, ; Pioneer Energy Services, Hays, KS, D Fischer ; Log total depth (3649') was 1 ft short to rotary total depth (3650').

COMPLETION:

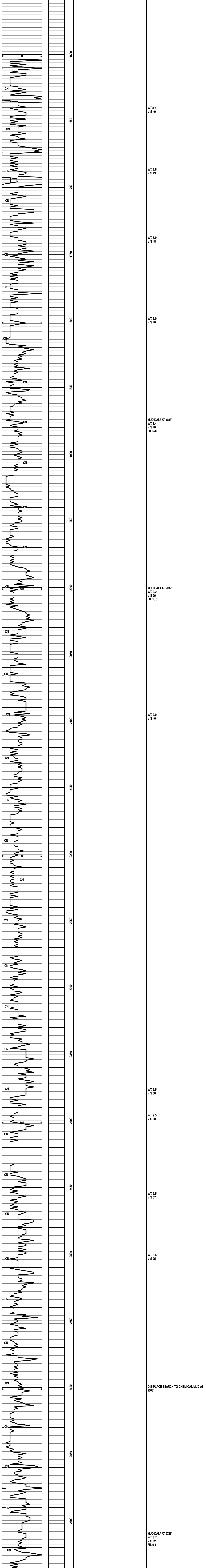
PRODUCTION CASING SET ON ARBUCKLE

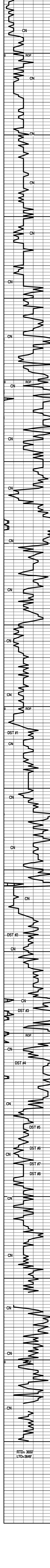
WELLSITE GEOLOGIST:

RENE HUSTEAD
 2932 S. 8TH TERRACE
 KANSAS CITY, KANSAS 66103
 PHONE (913) 208-3390

Geologist Contact Info:

Name: **Rene Husted**
 Company: **Consultant**
 Address: **2932 S. 8th Terrace**
Kansas City, Kansas 66103
 Phone- **(913) 908-3390**





HOWARD 2789 (905)

TOPEKA 2826 (942)

HEEBNER 3118 (-1233')

TORONTO 3130 (-1243')

DOUGLAS SH 3148 (-1264')

BROWN LS 3212 (-1328')

LANSING/KC 3222 (-1338')

ARBUCKLE 3460 (-1576')

DOLO

LS-CRIM-F-XLN-FOSS-SHLY WITH SH-DK GRY-BLKY-FOSS-LMY

LS-BRN-F-XLN-HD-DNS W/ CHRT-DK GRY-OPQ-FRSH

KING SHALE

LS-GRY-F-XLN-FOSS-OOL-FR-FOSS VUG POR-DULL WHT FLOR-NO VIS SHOW

LS-OFF WHT-F-XLN-BRIT-CHLKY-DNS

LS-GRY-TN-F-XLN-TR FOSS-HD-DNS

LS-TN-F-XLN-FOSS-OOL-TR VUG POR MSTLY DNS

LS-TN-F-XLN-OOL-TR DK BRN STN-DULL WHT FLOR-NO VIS CUT-NO ODOR

LS-CRIM-F-XLN-FOSS-TR SH GRY IMBD WITH CHRT-HD-DNS

LS-GRY-F-XLN-FOSS-FUS-SHLY WITH SH-GRY-SPLNTY

HEEBNER 3118' (-1233')

SH-BLK-CARB

TORONTO 3130' (-1243')

LS-OFF WHT-F-XLN-CHLKY-BRIT-DNS-DULL WHT FLOR-NO VIS CUT-NO VIS SHOW

DOUGLAS SH 3148' (-1264')

SH-RED-SFT-SILTY

SH-LT GRY-SILTY-HEM

SH-LT GRY-SFT-GUMMY

SH-LT GRY-GUMMY

SH-GRY-SFT-SILTY

SILTSS-FRSTY GRY-F-GRN-SHLY-HEM-MCA

BROWN LS 3212' (-1328')

LS-TR-F-XLN-HD-DNS

LANSING/KC 3222' (-1338')

LS-OFF WHT-F-XLN-TR FSS-FR PP/SM VUG POR-LT BRN STN-YEL/GLD FLOR-FR TO GD STRM AND FLSH CUT-FO-FNT ODOR

LS-GRY-F-GRN-FOSS-SHLY-NO VIS FLOR-NO VIS SHOW

LS-OFF WHT-F-XLN-CHLKY-PP POR-LT BRN STN-WHITE FLOR-PR FLSH CUT-V-FNT ODOR

LS-TN-F-XLN-GRN-SHLY IP-TR FOSS-HD-DNS WITH SH-DK GRY-FRM-BLKY-FOSS-FUS

LS-OFF WHT-F-XLN-OOL-FOSS-HD-DNS

LS-CRIM-F-XLN-SM OOL-TR SM VUG POR-BRITE WHT FLOR-NO VIS CUT-NO ODOR

LS-OFF WHT-F-XLN-TR OOL/ FOSS-HD-DNS

LS-CRIM-F-XLN-OOL-FR TO GD OOL-MOLDIC POR-BARREN

LS-LT BRN-F-XLN-HD-DNS W/ CHRT-LT BRN-OPQ-FRSH

LS-CRIM-F-XLN-TR FOSS-PR PP/SM VUG POR-LT BRN STN-NO VIS FLOR-FR STRM CUT-FNT ODOR-TR FO

LS-OFF WHT-F-XLN-OOL-TR SH IMBD-HD-DNS WITH TR PP POR-SCATT YEL/GLD FLOR-NO VIS CUT-NO ODOR

POOR SAMPLES - MSTLY-SH-GRY-SPLINTY

POOR SAMPLES A.A.

LS-CRIM-F-XLN-TR FOSS-CHLKY IP-TR PP/SM VUG POR-LT BRN STN-WHITE FLOR-PR TO FR FLSH CUT-SSFO-NO ODOR

LS-OFF WHT-F-XLN-OOL-PR INTER-XLN-PP POR-DK BLK STN-WHITE FLOR-PR FLSH CUT-NO ODOR-SSFO-GAS BUB

BASE OF KANSAS CITY 3442' (-1558')

SH-RED-SFT-GUMMY

CHRT-RED-VARIG-OPQ-FRSH

ARBUCKLE 3460' (-1576')

DOLO-TN-M-GRN-LT BRN STN-YEL/GLD FLOR-FR STRM CUT-FO-STRNG ODOR-GAS BUB

DOLO-TN-F-M-GRN-PR TO FR INTER-GRN/PR OOL-MOLDIC POR-LT BRN SAT STN-DULL YEL/GLD FLOR-GD STRM CUT-FO-GD ODOR

DOLO-TN-F-GRN-PR INTER-GRN POR-LT BRN SAT STN-DULL YEL/GLD FLOR-GD STRM CUT-FO-GD ODOR

DOLO-TN-M-GRN-FR INTER-GRN POR-DK BLK STN-DULL YEL/GLD FLOR-GD STRM CUT-FO-GD ODOR

DOLO-OFF WHT-M-GRN-PR TO FR INTER-GRN POR-DK BLK STN-DULL WHT FLOR-FR STRM CUT-STRNG ODOR

DOLO-TN-F-XLN-GRN-SLI SUCRO-NO VIS STN-NO ODOR-CHRT-OFF WHT-OPQ-FRSH

DOLO-CRIM-F-XLN-SUCRO-TR VUG POR-NO VIS FLOR-NO VIS STN-NO ODOR

DOLO-SHOW-V-F-XLN-CHLKY-OOL-DULL YEL FLOR-NO VIS CHRM-NO VIS CUT-NO ODOR

DOLO A.A.

DOLO-LT BRN-V-F-XLN-HD-DNS

DOLO-TN-F-GRN-HD-DNS WITH CHRT-OFF WHT-OPQ-FRSH

DOLO-TN-F-M-GRN-HD-DNS W/ CHRT-OFF WHT-OPQ-FRSH

DOLO A.A.

DOLO-CRIM-M-GRN-TR SM VUG POR-NO VIS STN-NO ODOR

DOLO TN-CRS-XLN-BRIT-GD INTER-GRN POR-NO VIS STN-NO ODOR

DOLO-LT BRN-F-XLN-FR VUG POR-NO VIS STN-NO VIS CUT-NO ODOR

DOLO-TN-F-XLN-SUCRO-W/ CHRT-OFF WHT-OPQ-FRSH

DOLO-TN-F-XLN-HD-DNS W/CHRT A.A.

DOLO-CRIM-V-F-XLN-HD-DNS

WT. 9.0
VIS 45

WT. 8.9
VIS 44

SURVEYS
829' 1 DEG
3450' 1 DEG
3650' 1 DEG

WT. 9.0
VIS 44

KB=1884'

WT. 9.0
VIS 52

WT. 9.1
VIS 50

KB=1884'

HW 8 UNIT GAS INCRS

KB=1884'

MUD DATA AT 3204'
WT. 9.2
VIS 57
FIL 6.8

DST #1
3214-3265
REC-3 FT MUD
IBLWVK BLW BLT TO 1/2 INCH THEN DIED
IN 14 MIN/NO BLWBK
FBLWDEAD -NO BLWFLSH TOOL NO
HELP/NO BLWBK
15:30/15:30
SIP-62.66-49.11
IFP-40.14-41.32
FFP-1565.27-1554.09

HW 3 UNIT GAS INCRS

STRAP=3284.33
BOARD=3285.32

DST #2
3340-3378
REC-8 FT MUD
IBLWVK BLW BLW BLT TO 1/2 INCH THEN
DIED TO WK SURF BLW/NO BLWBK
HELP/NO BLWBK
DEAD FLUSH TOOL NO HELP/NO BLWBK
30:00/30:00
SIP-70.73-491.09
IFP-30.99-32.16
FFP-22.69-33.69
HP-1626.14-1600.95

MUD DATA AT 3335'
WT. 9.3
VIS 43
FIL 6.8

HW 3 UNIT GAS INCRS

DST #3
3378-3406
REC-8 FT MUD
IBLWVK BLW BLW BLT TO 1 INCH AND
DIED TO WK SURF BLW/NO BLWBK
HELP/NO BLWBK
DEAD FLUSH TOOL NO HELP/NO BLWBK
15:40/15:30
SIP-1164.06-1092.16
IFP-23.01-28.40
FFP-30.25-30.98
HP-1654.26-1644.21

MUD DATA AT 3406'
WT. 9.3
VIS 43
FIL 6.8

DST #4
3403-3457
REC-5 FT MUD
IBLWVK BBLW FOR 8 MIN AND DIED
FBLWNO BLW
15:30/15:30
SIP-69.39-272.47
IFP-36.69-38.27
FFP-38.89-39.60
HP-1705.81-1603.54

DST #5
3465-3475
REC-120 FT GAS IN PIPE, 120 FT CLEAN
GASSEY OIL-GRAVITY 34, 60 FT MUDDY
GASSEY OIL (5% GAS, 55% OIL, 60% MUDDY), 60
FT MUDDY GASSEY OIL (5% GAS, 29%
OIL, 70% MUD), 60 FT MUDDY GASSEY OIL-
(5% GAS, 15% OIL, 80% MUD)
30:00/30:00
SIP-1045-981.1
IFP-76.54-111.07
FFP-104.44-142.71
HP-1678.05-1645.6

MUD DATA AT 3485'
WT. 9.2
VIS 47
FIL 7.6

DST #7
3475-3481'
REC-3 FT VERY SLI OIL CUT MUD (2% OIL
AND 98% MUD) IBLWVK BLW
FOR 11 MIN AND DIED
FBLWNO BLW
15:00/15:00
SIP-1072.51-1016.87
IFP-14.55-15.59
FFP-16.18-16.29
HP-1754.71-1672.59

DST #8
3478-3466
REC-125 FT SALT WATER WITH A SCUM OF
OIL
IBLWVK BLDING BLW BLT TO 8 INCHES
FBLWVK BLDING BLW BLT TO 12 INCHES
30:00/30:00
SIP-1130.52-1124.88
IFP-16.32-37.57
FFP-39.24-77.36
HP-1682.79-1664.2

MUD DATA AT 3650'
WT. 8.8
VIS 48
FIL 8.0
LCM-TR

RTD=3650'
LTD=3649'