

**Scale 1:240 (5"=100') Imperial
Measured Depth Log**

Well Name: SC-LR #1-33
Location: 945FWL 2694' FWL, 33-16S-33W, Scott County, Kansas
License Number: API: 15-171-21111 Region: Wildcat
Spud Date: 5-15-13 Drilling Completed: 11-24-14
Surface Coordinates: Lat: 38.6244192 Long: -100.9711741
Bottom Hole Coordinates: Vertical hole

Ground Elevation (ft): 3064' K.B. Elevation (ft): 3073'
Logged Interval (ft): 250' To: RTD Total Depth (ft): 4840
Formation: Mississippian at RTD
Type of Drilling Fluid: Chemical

Printed by MUD.LOG from WellSight Systems 1-800-447-1534 www.WellSight.com

GEOLOGIST

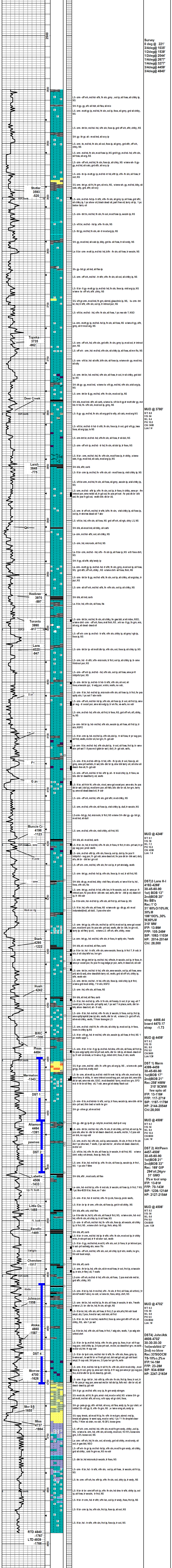
Name: Bob Schreiber
Company: Independent
Address: 268 NE 220 Rd
Holsington, KS 67544
620-653-7691

COMMENTS

Contractor: Duke Drig Rig #4
Pusher: Rich Wheeler
Surface Casing: 8 5/8" set at 221' w/165sxs
Production Casing: 5 1/2" set @ 4833' cmnt w/170 sxs
Mud by: MudCo
DST's by: Diamond Testing
Logs by: Recon (DIL, CN-CD, ML,SONIC)
RTD= 4840'
LTD= 4839'

FORMATION TOPS

FORMATION	SAMPLE TOPS		LOG TOPS	
	Depth	Datum	Depth	Datum
Stone Corral	2412'	+659	2410'	+663
B/Stone Corral	2433'	+638	2430'	+643
Heebner Shale	3735	-662	3734	-661
Lansing	3970'	-899	3970'	-897
Muncie Creek Shale	4015'	-944	4010'	-937
Shark Shale	4196'	-1125	4194'	-1121
Hushpuckney Shale	4295'	-1224	4294'	-1222
Marmaton	4342'	-1269	4351'	-1278
Upper Fort Scott	4416'	-1345	4412'	-1339
Little Osage Shale	4558'	-1485	4558'	-1487
Excello Shale	4631'	-1558	4631'	-1558
Johnson Zone	4699'	-1626	4698'	-1625
Mississippian	4736'	-1663	4736'	-1663
RTD	4840'	-1867		
LTD			4839'	-1766



Survey
0 deg @ 1031'
3/4deg @ 223'
1/2deg @ 1539'
1/2deg @ 2044'
1/4deg @ 2677'
1/4deg @ 3277'
3/4deg @ 4459'
3/4deg @ 4840'

MUD @ 3780'
WT: 8.1
VIS: 64
PH: 6.4
Chl: 3400
Lcm: #

MUD @ 4246'
WT: 8.1
VIS: 56
PH: 6.0
Chl: 3400
Lcm: #

DST3) J-H
4192-4266'
30-45-60-90
1st) BOB 13"
2nd) BOB 20"
No BB's
Rec: 1'O/O
31' 60% O/10W,
30% M
188' 100%, 30%
W, 60% M
310' MW
FFP: 13-99#
IFP: 105-249#
HP: 2014-2014#
Chl: 28,000

MUD @ 4506'
WT: 8.2
VIS: 54
PH: 6.0
Chl: 8000
Lcm: #

DST4) John/Atk
4680-4702'
30-30-30-30
1st) wsb/bld (2"
2nd) no blow
Rec: 33% GCM
TS: 10% O, 2% W
IFP: 14-19#
FFP: 23-28#
SIP: 934-656#
HP: 2247-2163#