

Scale 1:240 (5"=100') Imperial
Measured Depth Log

Well Name: Younger #1
API: 15-051-26767-00-00
Location: SW NE SW NW SECTION 35 13S 19W
License Number: 5663
Spud Date: 12/12/2014
Surface Coordinates: 1795' FROM NORTH LINE OF SECTION
956' FROM WEST LINE OF SECTION
Bottom Hole Coordinates: 1795' FROM NORTH LINE OF SECTION
956' FROM WEST LINE OF SECTION
Ground Elevation (ft): 2169' K.B. Elevation (ft): 2174'
Logged Interval (ft): 2800' To: 3925' Total Depth (ft): 3925'
Formation: ARBUCKLE
Type of Drilling Fluid: CHEMICAL, MUD-CO

Region: ELLIS CO. KS.
Drilling Completed: 12/23/2014

Printed by WellSight Log Viewer from WellSight Systems 1-800-447-1534 www.WellSight.com

OPERATOR

Company: HESS OIL COMPANY
Address: PO BOX 1009
MCPHERSON, KANSAS 67460-1009
(620) 241-4640

GEOLOGIST

Name: DAVID GOULD (LOGGER)
Company: DMT COMPANY
Address: 532 SUNRISE
PRATT, KANSAS 67124
(620) 388-2847

Comments

CONTRACTOR:
MALLARD Rig #1

BIT RECORD:
#1, 7 7/8, F27, RD1785, 209'-3561'
#2, 7 7/8, F27, RD5411, 3561'-3691'
#3, 7 7/8, F27, RR, 3691'-3925'

SURVEYS:
209' 1 DEGREE
3419' 1 1/2 DEGREES
3925' 2 DEGREES

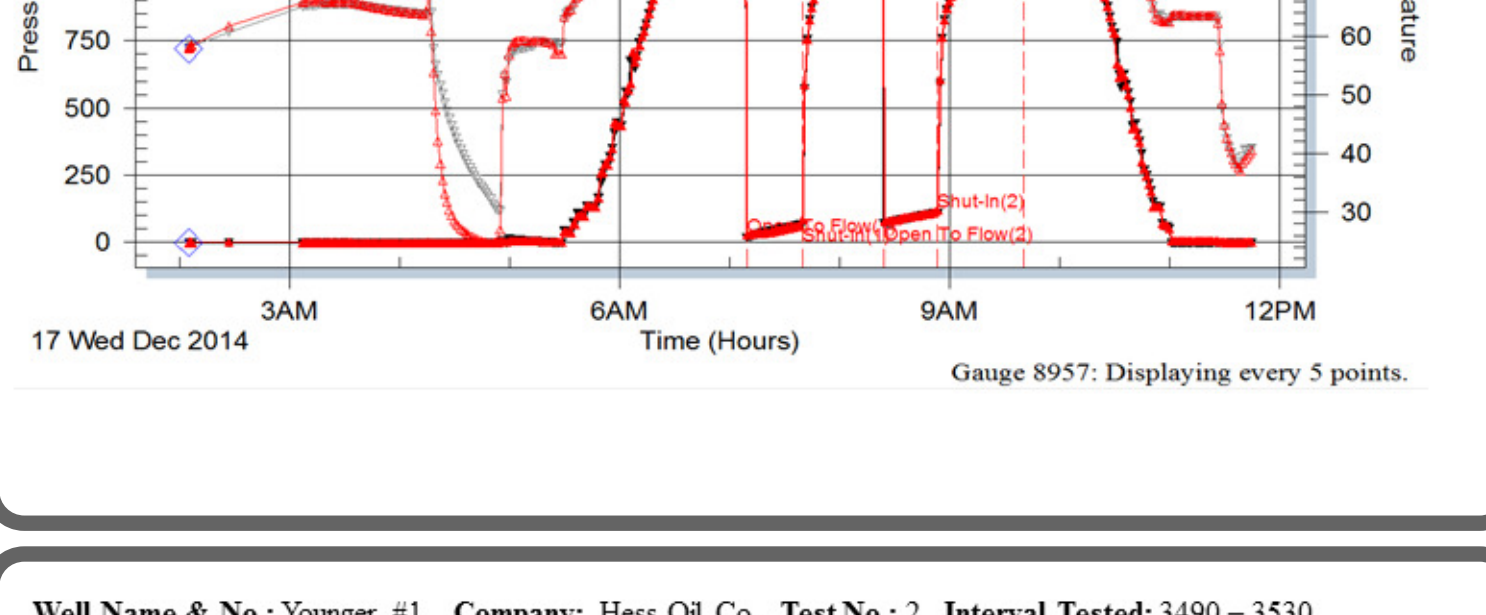
DAILY STATUS: (7:00 AM)

12/12/14 Mover in Mallard Drilling rig. Spudded @ 2:30 pm. Drilled to 217' and ran 5 jts. 8-5/8" x 20# x 202' surface casing. Set @ 209' and cemented w/150 sx Class A, 3% cc, 2% gel. CDC. PD @ 9:30 pm
12/13/14 Rig repairs @ 209' @ 6:30 am
12/14/14 Drilling @ 1917'
12/15/14 Drilling @ 2641'
12/16/14 Drilling @ 3209'
12/17/14 Drilled to 3419', DST #1, Drilled ahead to 3530'.
12/18/14 3530' DST #2
12/19/14 Drilling @ 3573'
12/20/14 Drilling @ 3677'
12/21/14 3701' DST #5
12/22/14 3807' DST #6
12/23/14 3851' DST #7
12/24/14 3925' Shut down for christmas after logs
12/27/14 Rig up @ 6:30 AM, Ream to TD
12/28/14 Cement Production Pipe Plug Down @ 7:25 AM

Well Name & No.: Younger #1 Company: Hess Oil Co. Test No.: 1 Interval Tested: 3396 - 4419
Zone Tested: Oriad Times: 30-45-30-45
Blow Description: IFP: 2 1/4" Blow ISI: No Blow Back FFP: 2' blow FSI: No Blow Back
Rec: 60 Feet of OSMCW 70% Water 30% Mud, 125 Feet of SMCW 95% Water 5% Mud, Rec. Total: 185', BHT: 108 Gravity: N/A

Initial Hydrostatic: 1728 First Initial Flow: 18 First Final Flow: 66 Initial Shut-In: 1,079
Second Initial Flow: 69 Second Final Flow: 110 Final Shut-In: 1,063 Final Hydrostatic: 1,644

Pressure vs. Time

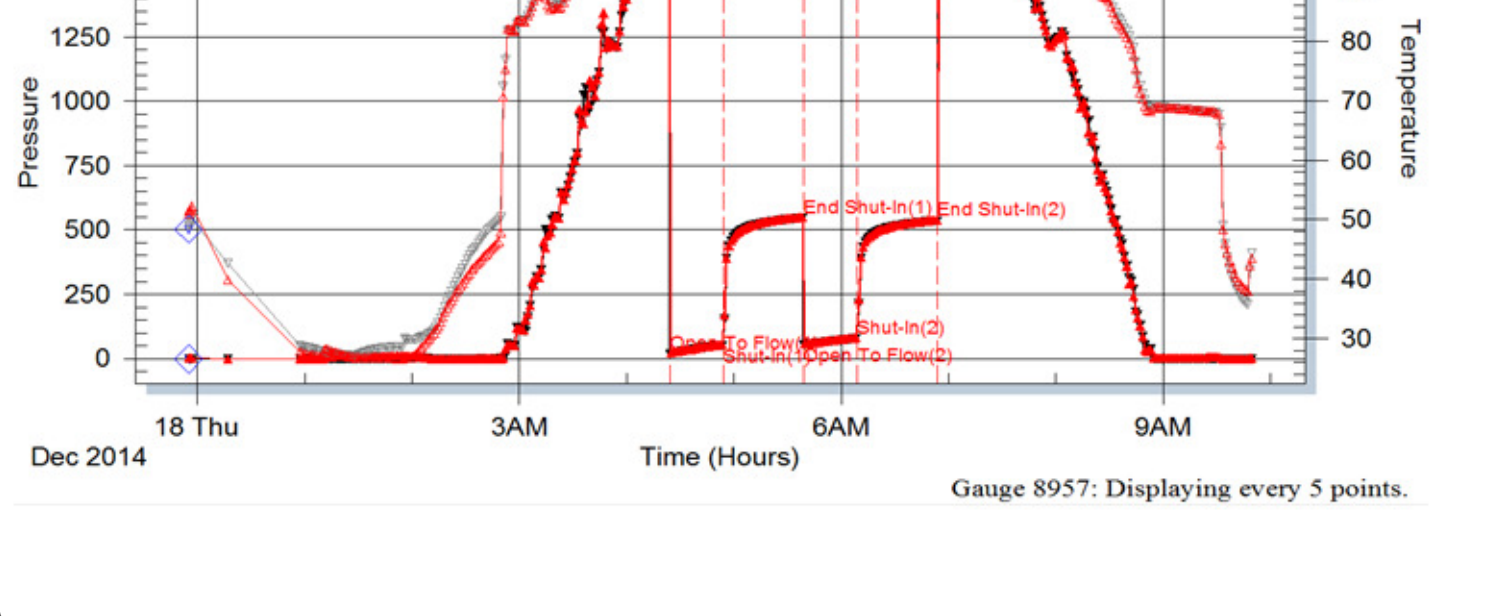


Gauge 8957: Displaying every 5 points.

Well Name & No.: Younger #1 Company: Hess Oil Co. Test No.: 2 Interval Tested: 3490 - 3530
Zone Tested: Lansing Times: 30-45-30-45
Blow Description: IFP: 3" Blow ISI: No Blow Back FFP: 1 1/2" Blow FSI: No Blow Back
Rec: 65 Feet of VSWCM 10% Water 90% Mud, 60 Feet of MCW 70% Water 30% Mud Rec. Total: 125', BHT: 108 Gravity: N/A

Initial Hydrostatic: 1736 First Initial Flow: 78 First Final Flow: 52 Initial Shut-In: 546
Second Initial Flow: 55 Second Final Flow: 78 Final Shut-In: 536 Final Hydrostatic: 1694

Pressure vs. Time

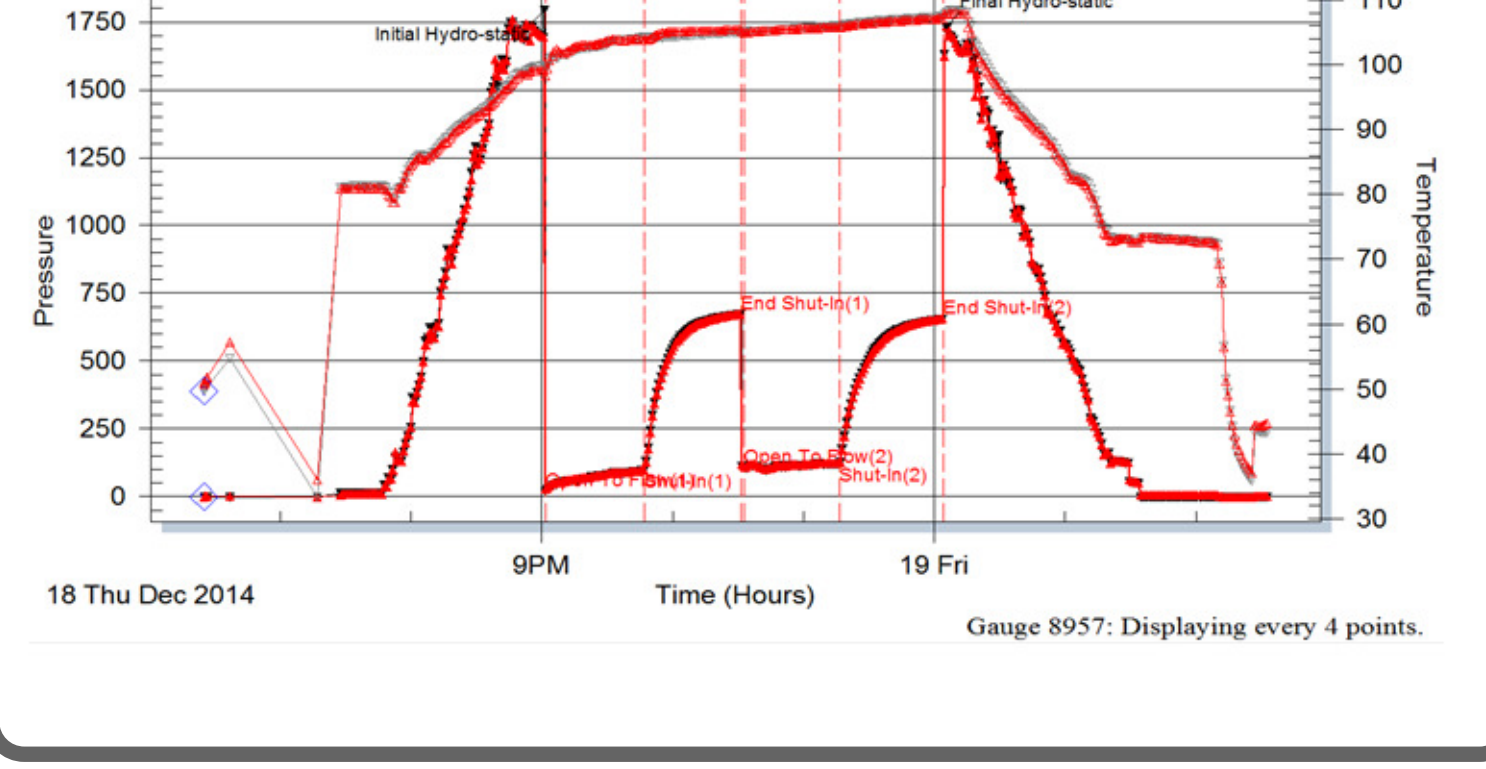


Gauge 8957: Displaying every 5 points.

Well Name & No.: Younger #1 Company: Hess Oil Co. Test No.: 3 Interval Tested: 3535 - 3564
Zone Tested: Lansing Times: 45-45-45-45
Blow Description: IFP: BOB in 18 Min. ISI: No Blow Back FFP: BOB in 10 Min. FSI: 1 1/2" Blow
Rec: 50 Feet of GOCM 20% Gas 20% Oil, 60% Mud, 250 Feet of GO 20% Gas 80% Oil, 750' Feet of GIP Rec. Total: 300', BHT: 107 Gravity: N/C

Initial Hydrostatic: 1795 First Initial Flow: 20 First Final Flow: 98 Initial Shut-In: 672
Second Initial Flow: 106 Second Final Flow: 120 Final Shut-In: 654 Final Hydrostatic: 1734

Pressure vs. Time

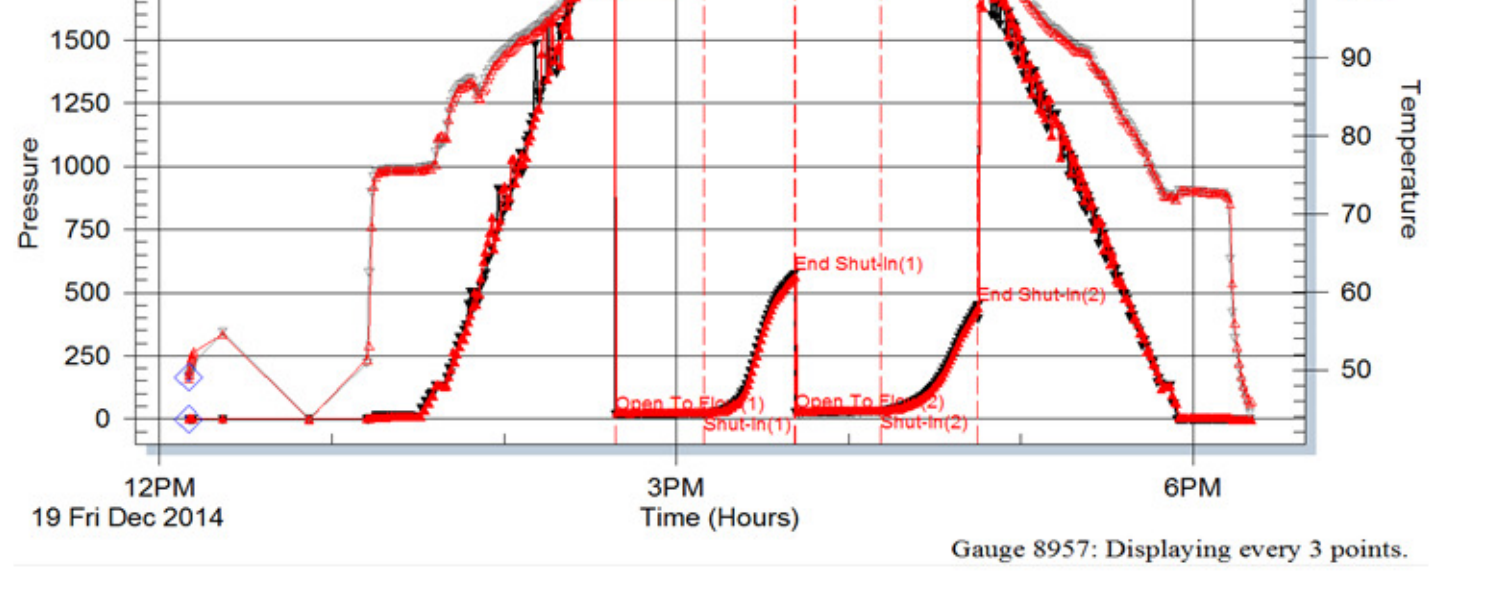


Gauge 8957: Displaying every 4 points.

Well Name & No.: Younger #1 Company: Hess Oil Co. Test No.: 4 Interval Tested: 3566 - 3600
Zone Tested: LKC Times: 30-30-30-30
Blow Description: IFP: Weak Surface Blow ISI: No Blow Back FFP: No Blow FSI: No Blow Back
Rec: 20 Feet of OSM 100% Mud Rec. Total: 20', BHT: 105 Gravity: N/A

Initial Hydrostatic: 1726 First Initial Flow: 16 First Final Flow: 21 Initial Shut-In: 570
Second Initial Flow: 24 Second Final Flow: 29 Final Shut-In: 449 Final Hydrostatic: 1724

Pressure vs. Time

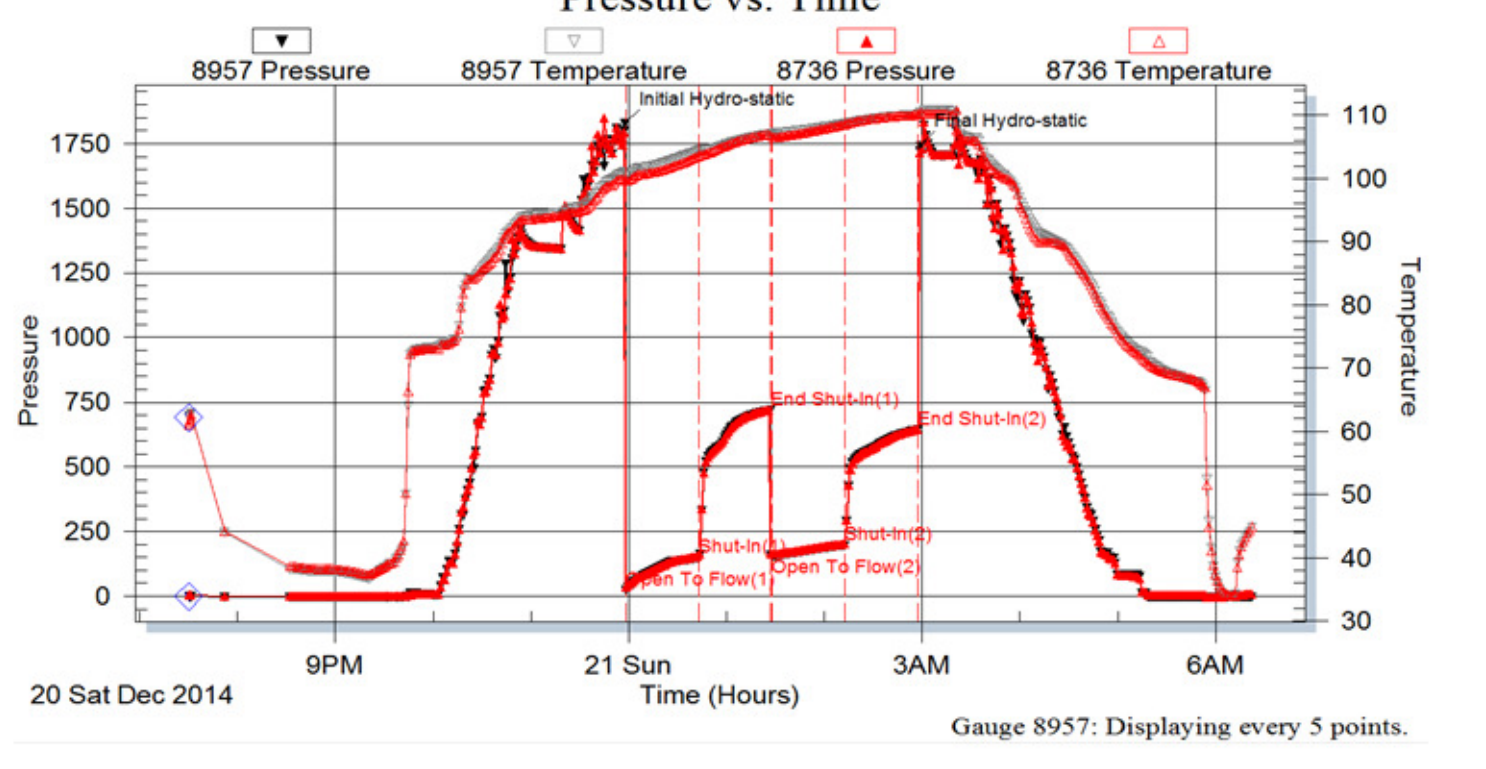


Gauge 8957: Displaying every 3 points.

Well Name & No.: Younger #1 Company: Hess Oil Co. Test No.: 5 Interval Tested: 3608 - 3700
Zone Tested: LKC Times: 45-45-45-45
Blow Description: IFP: BOB in 24 Min. ISI: Weak Surface Blow FFP: BOB in 30 Min. FSI: Surface Blow
Rec: 15 Feet of SGMCO 85% Oil, 10% Mud 125 Feet of VSOWCM 2% Oil 30% Water 68% Mud, 235 Feet of MCW 80% Water 20% Mud, 120 Feet of GIP Rec. Total: 390', BHT: 110 Gravity: N/C

Initial Hydrostatic: 1827 First Initial Flow: 23 First Final Flow: 148 Initial Shut-In: 718
Second Initial Flow: 156 Second Final Flow: 197 Final Shut-In: 644 Final Hydrostatic: 1743

Pressure vs. Time

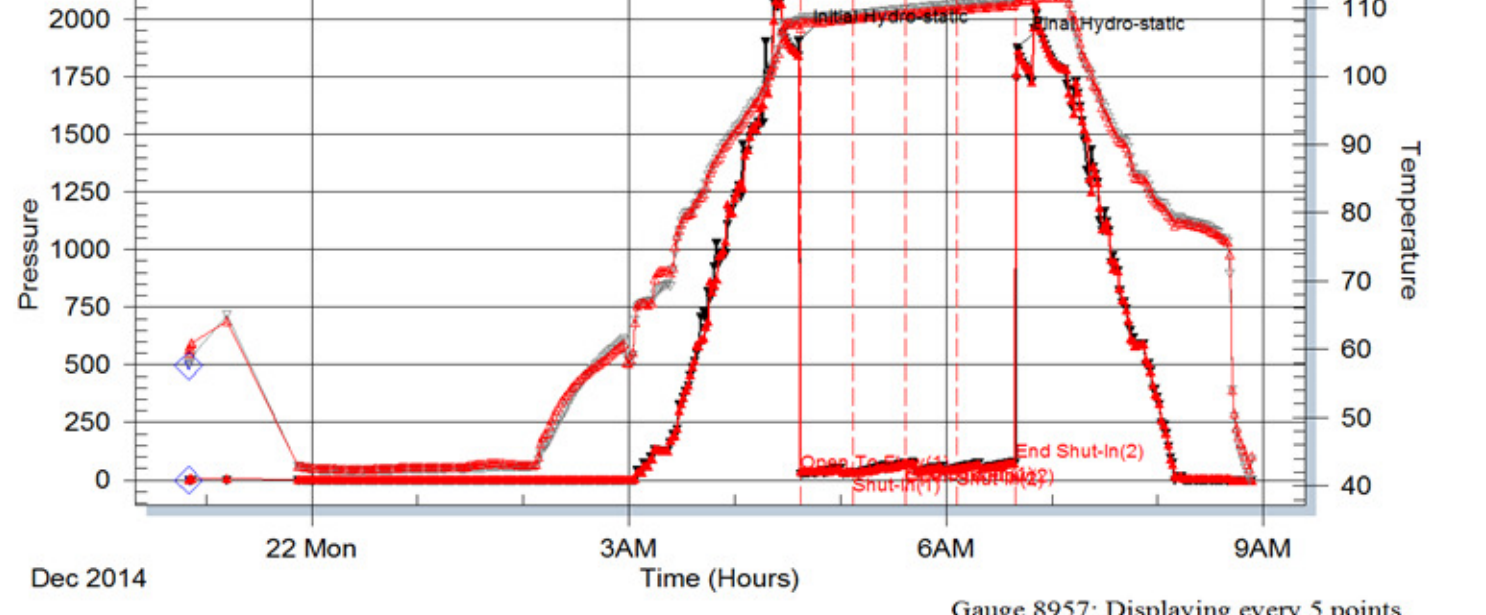


Gauge 8957: Displaying every 5 points.

Well Name & No.: Younger #1 Company: Hess Oil Co. Test No.: 6 Interval Tested: 3791 - 3807
Zone Tested: Cong. Times: 30-30-30-30
Blow Description: IFP: 1/4" Blow ISI: No Blow Back FFP: No Blow FSI: No Blow Back
Rec: 15 Feet of Mud 100% Mud Rec. Total: 15', BHT: 112 Gravity: N/A

Initial Hydrostatic: 1904 First Initial Flow: 26 First Final Flow: 27 Initial Shut-In: 74
Second Initial Flow: 64 Second Final Flow: 54 Final Shut-In: 75 Final Hydrostatic: 1873

Pressure vs. Time

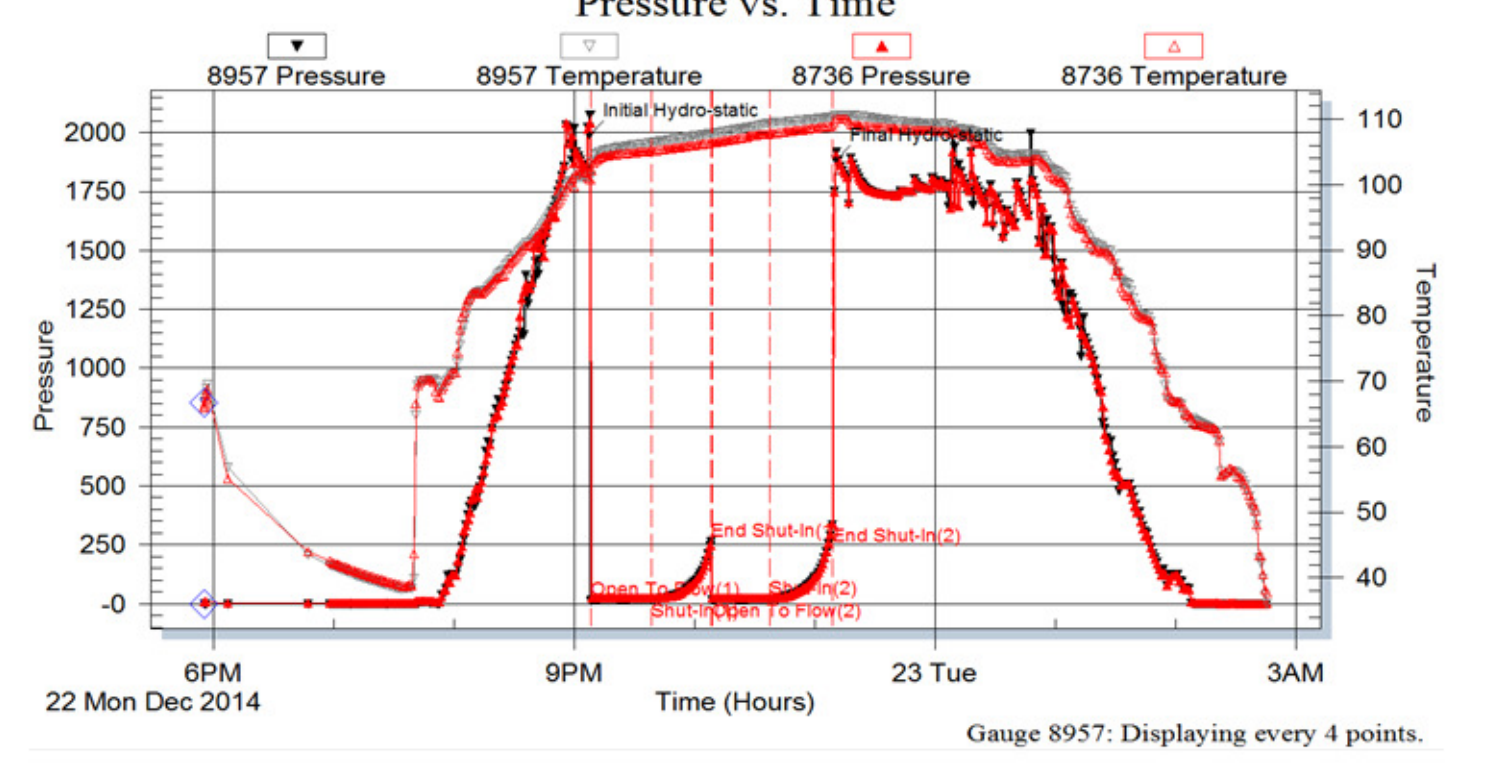


Gauge 8957: Displaying every 5 points.

Well Name & No.: Younger #1 Company: Hess Oil Co. Test No.: 7 Interval Tested: 3843 - 3851
Zone Tested: Arburckle Times: 30-30-30-30
Blow Description: IFP: 1/2" Blow ISI: No Blow Back FFP: No Blow FSI: No Blow Back
Rec: 30 Feet of Mud 100% Mud, Rec. Total: 30', BHT: 110 Gravity: N/A

Initial Hydrostatic: 1989 First Initial Flow: 14 First Final Flow: 18 Initial Shut-In: 65
Second Initial Flow: 16 Second Final Flow: 18 Final Shut-In: 35 Final Hydrostatic: 1884

Pressure vs. Time



Gauge 8957: Displaying every 4 points.

ROCK TYPES

Anhy	Clyst	Gyp	Mrlst	Shgy
Bent	Coagl	Igne	VIS 55	Siltst
Brec	Dol	Lmst	Shale	Ss
Cht		Meta	Shcol	Till

