

DIAMOND TESTING GENERAL REPORT

Jake Fahrenbruch, Tester

Cell: (620) 282-8977 / Office: (800) 542-7313



TEST INFORMATION

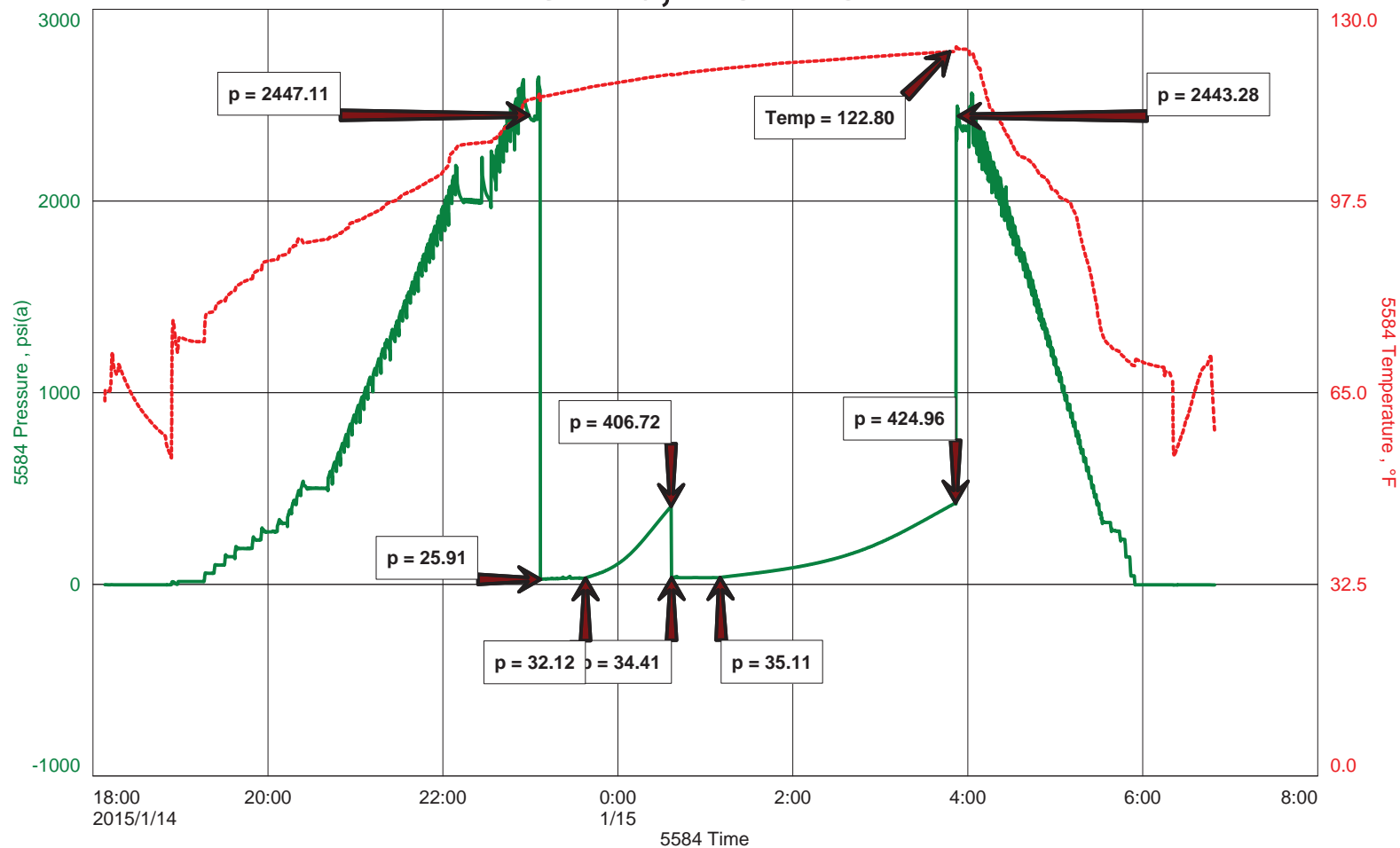
Well Name	Stacy #1-24
Company Name	Berexco LLC
Formation	Morrow 4984'-5030'
Test Type	Bottom-Hole DST w/J,Jnt,ShPkr
Surface Location	Sec 24-26s-34w-Finney Co.-KS
KB Elevation (SL)	2946.000
Gauge Name	5584
Start Test Date	2015/01/14
Start Test Time	18:08:00
Final Test Date	2014/01/15
Final Test Time	06:49:00
Job Number	F369
Contact	Evan Mayhew
Site Contact	Ed Grieves

TEST RESULTS

Initial flow, weak blow, increased to 1" in 20 minutes.
Final flow, no blow.

Recovered 30' of drilling mud, 100%.
Oil specks in tool.

DST #3, MORROW





DIAMOND TESTING

P.O. Box 157
HOISINGTON, KANSAS 67544
(800) 542-7313

DRILL-STEM TEST TICKET
FILE: STACY 1 DST3

ON LOCATION: 16:30 1-14
START RECORDERS: 18:08 1-14
STOP RECORDERS: 06:49 1-15

Company BEREXCO, LLC Lease & Well No. STACY #1-24
Contractor BEREDCO, LLC RIG #1 Charge to BEREXCO, LLC
Elevation 2946' KB Formation MORROW Effective Pay _____ Ft. Ticket No. F369
Date 1-15-15 Sec. 24 Twp. 26S Range 34W County FINNEY State KANSAS
Test Approved By ED GREEVES Diamond Representative JAKE FAHRENBRUCH

Formation Test No. 3 Interval Tested from 4984 ft. to 5030 ft. Total Depth 5030 ft.
Packer Depth 4979 ft. Size 6 3/4 in. Packer depth _____ ft. Size 6 3/4 in.
Packer Depth 4984 Sh Pkr ft. Size 6 3/4 in. Packer depth _____ ft. Size 6 3/4 in.
Depth of Selective Zone Set _____

Top Recorder Depth (Inside) 4962 ft. Recorder Number 5951 Cap. 5000 P.S.I.
Bottom Recorder Depth (Outside) 4985 ft. Recorder Number 5584 Cap. 5000 P.S.I.
Below Straddle Recorder Depth _____ ft. Recorder Number _____ Cap. _____ P.S.I.
Mud Type CHEMICAL Viscosity 61 (3# LCM) Drill Collar Length 622 ft. I.D. 2 1/4 in.
Weight 9.5 Water Loss 10.8 cc. Weight Pipe Length _____ ft. I.D. 2 7/8 in.
Chlorides 3700 P.P.M. Drill Pipe Length 4316 ft. I.D. 3 1/2 in.
Jars: Make STERLING Serial Number #5 J, JNT, SH PKR Test Tool Length 33 ft. Tool Size 3 1/2-IF in.
Did Well Flow? _____ Reversed Out _____ Anchor Length 46 ft. Size 4 1/2-FH in.
Main Hole Size 7 7/8 Tool Joint Size 4 1/2 XH in. 13' PERF IN ANCHOR Surface Choke Size 1 in. Bottom Choke Size 5/8 in.

Blow: 1st Open: WEAK BLOW, INC TO 1" IN 20 MIN.
2nd Open: NO BLOW.

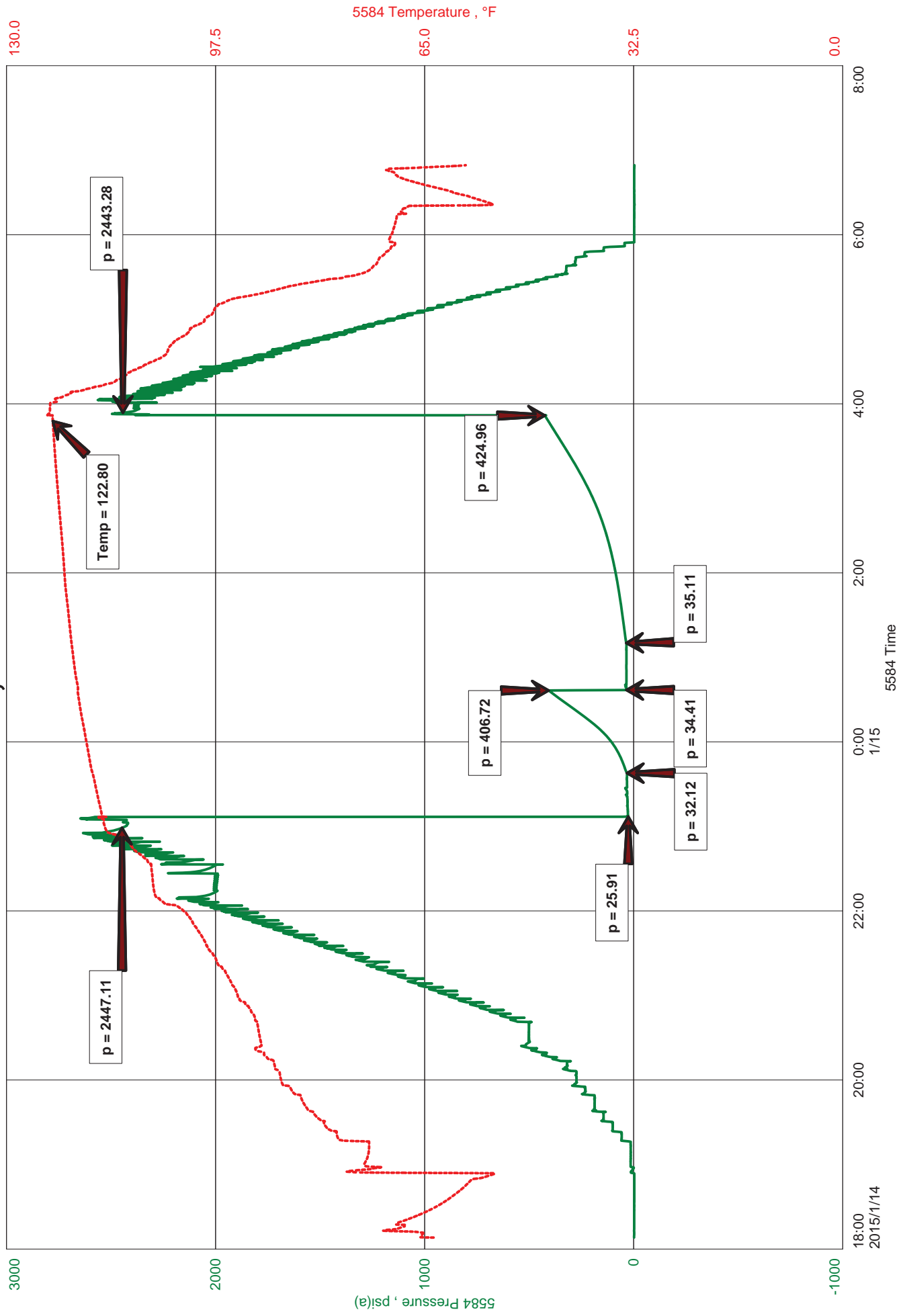
Recovered 30 ft. of DRUG MVD 100" MUD
Recovered _____ ft. of OIL SPECKS IN TOOL
Recovered _____ ft. of _____
Recovered _____ ft. of _____
Recovered _____ ft. of _____
Recovered _____ ft. of _____

Remarks: _____
Price Job _____
Other Charges 14 1/4 HR ON LOC
JAR, S. JNT, SH PKR
42 MRT (GR)
Total _____

Time Set Packer(s) 11:07 ^{AM}/_{PM} Time Started Off Bottom 3:07 ^{AM}/_{PM} Maximum Temperature 123°F
Initial Hydrostatic Pressure..... (A) 2447 P.S.I.
Initial Flow Period..... Minutes 30 (B) 26 P.S.I. to (C) 32 P.S.I.
Initial Closed In Period..... Minutes 60 (D) 407 P.S.I.
Final Flow Period..... Minutes 30 (E) 34 P.S.I. to (F) 35 P.S.I.
Final Closed In Period..... Minutes 120 (G) 425 P.S.I. THANKS!
Final Hydrostatic Pressure..... (H) 2443 P.S.I. part 5' down

Diamond Testing shall not be liable for damages of any kind to the property or personnel of the one for whom a test is made or for any loss suffered or sustained, directly or indirectly, through the use of its equipment, or its statement or opinion concerning the result of any test. Tools lost or damaged in the hole shall be paid for at cost by the party for whom the test is made.

DST #3, MORROW





DIAMOND TESTING
P.O. Box 157
HOISINGTON, KANSAS 67544
(800) 542-7313
DRILL-STEM TEST TICKET
FILE: STACY1DST3

TIME ON: 18:08 1/14
TIME OFF: 06:49 1/15

Company Berexco, LLC Lease & Well No. Stacy #1-24
Contractor Beredco, LLC Rig #1 Charge to Berexco, LLC
Elevation 2946' KB Formation Morrow Effective Pay _____ Ft. Ticket No. F369
Date 1/15/15 Sec. 24 Twp. 26s S Range 34w W County Finney State KANSAS
Test Approved By Ed Grieves Diamond Representative Jake Fahrenbruch

Formation Test No. 3 Interval Tested from 4984 ft. to 5030 ft. Total Depth 5030 ft.
Packer Depth 4979 ft. Size 6 3/4 in. Packer depth _____ ft. Size 6 3/4 in.
Packer Depth 4984 shpk ft. Size 6 3/4 in. Packer depth _____ ft. Size 6 3/4 in.
Depth of Selective Zone Set _____

Top Recorder Depth (Inside) 4962 ft. Recorder Number 5951 Cap. 5000 P.S.I.
Bottom Recorder Depth (Outside) 4985 ft. Recorder Number 5584 Cap. 5000 P.S.I.
Below Straddle Recorder Depth _____ ft. Recorder Number _____ Cap. _____ P.S.I.

Mud Type Chemical Viscosity 61 (3# LCM) Drill Collar Length 622 ft. I.D. 2 1/4 in.
Weight 9.5 Water Loss 10.8 cc. Weight Pipe Length 0 ft. I.D. 2 7/8 in.
Chlorides 3,700 P.P.M. Drill Pipe Length 4,316 ft. I.D. 3 1/2 in.
Jars: Make STERLING Serial Number #5 J,Jnt,ShPk Test Tool Length 33 ft. Tool Size 3 1/2-IF in.
Did Well Flow? NO Reversed Out NO Anchor Length 46 ft. Size 4 1/2-FH in.
Main Hole Size 7 7/8 Tool Joint Size 4 1/2 XH in. Surface Choke Size 1 in. Bottom Choke Size 5/8 in.

Blow: 1st Open: Weak blow, inc to 1" in 20 min
2nd Open: No blow

Recovered 30 ft. of Drilling Mud 100% mud
Recovered _____ ft. of oil specks in tool
Recovered _____ ft. of _____
Recovered _____ ft. of _____

Recovered _____ ft. of _____	Price Job
Recovered _____ ft. of _____	Other Charges
Remarks: _____	Insurance
_____	Total

Time Set Packer(s) 11:07 PM A.M. P.M. Time Started Off Bottom 3:07 AM A.M. P.M. Maximum Temperature 123 F

Initial Hydrostatic Pressure..... (A) 2447 P.S.I.
Initial Flow Period..... Minutes 30 (B) 26 P.S.I. to (C) 32 P.S.I.
Initial Closed In Period..... Minutes 60 (D) 407 P.S.I.
Final Flow Period..... Minutes 30 (E) 34 P.S.I. to (F) 35 P.S.I.
Final Closed In Period..... Minutes 120 (G) 425 P.S.I.
Final Hydrostatic Pressure..... (H) 2443 P.S.I.

Diamond Testing shall not be liable for damages of any kind to the property or personnel of the one for whom a test is made or for any loss suffered or sustained, directly or indirectly, through the use of its equipment, or its statement or opinion concerning the result of any test. Tools lost or damaged in the hole shall be paid for at cost by the party for whom the test is made.