

well
FILE

GEOLOGIST'S REPORT

DRILLING TIME & SAMPLE LOG

COMPANY Berexco LLC
 LEASE Stacy NO. 1-24
 LOCATION 1650' FNL + 1650' FWL
 SEC. 24 TWP. 26S RNG. 34W
 COUNTY Finney STATE Kansas
 FIELD Wildcat

ELEVATIONS
 KB 2945
 DF 2943
 GL 2933
 MEASUREMENTS ARE ALL FROM KB

CONTRACTOR Beredco Dalg. Rig #1
 COMM. 12-31-2014 COMP. 1-18-2015
 RTD 5340 LTD 5335
 No. of DST'S Four No. of CORES None

CASING RECORD
8 7/8" at 1792' w/ 7.75 SX.
 ___ of ___ w/ ___ SX.
 ___ of ___ w/ ___ SX.
 ___ of ___ w/ ___ SX.

EL. LOG A.C. Hess P. GR
Den. Neut. GR. Caliper
ML Sonic

SAMPLES SAVED FROM 3700 TO TD
 DRILLING TIME KEPT FROM 3700 TO TD
 SAMPLES EXAMINED FROM 3700 TO TD
 GEOLOGICAL SUPERVISION FROM 3700 TO TD
 GEOLOGIST ON WELL Edwin H. Grieves

FORMATION TOPS

	SAMPLE	LOG	SUBSEA
<u>Base Heebner</u>	<u>3917</u>	<u>3917</u>	<u>-972</u>
<u>Toronto</u>	<u>3930</u>	<u>3926</u>	<u>-981</u>
<u>Lansing Fm.</u>	<u>3959</u>	<u>3957</u>	<u>-1012</u>
<u>Kansas City Fm.</u>	<u>4390</u>	<u>4387</u>	<u>-1442</u>
<u>BKC</u>	<u>4511</u>	<u>4520</u>	<u>-1575</u>
<u>Marmaton</u>	<u>4541</u>	<u>4537</u>	<u>-1592</u>
<u>Pawnee</u>	<u>4629</u>	<u>4626</u>	<u>-1681</u>
<u>Et Scott</u>	<u>4669</u>	<u>4664</u>	<u>-1719</u>
<u>Cherokee</u>	<u>4685</u>	<u>4678</u>	<u>-1733</u>
<u>Morrow Fm.</u>	<u>4921</u>	<u>4948</u>	<u>-2003</u>
<u>Chester</u>	<u>5053</u>	<u>5046</u>	<u>-2101</u>
<u>St Louis</u>	<u>5149</u>	<u>5130</u>	<u>-2185</u>
<u>TD</u>	<u>5340</u>	<u>5335</u>	

API# 15-055-22374

REMARKS Eath-Tech had an unmanned gas detection unit on this well from 3700 feet to total depth.

5-10-15
 A. H. K. F. X
 Edw H. G
 Geo logist

LITHOLOGY
 SANDSTONE
 LIMESTONE
 SHALE
 CHERT

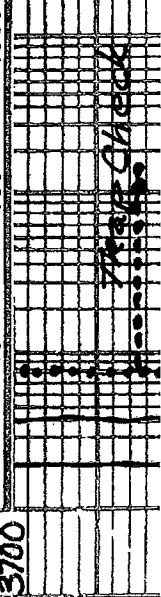
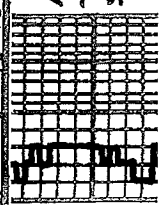
CHROMATOGRAPH
 HOT WIRE BY
 TOTAL GAS VOLUME

SILTSTONE
 DOLOMITE
 GRANITE WASH
 SAND & GYP

DRILL TIME SCALE
 5 10 15

SAMPLE DESCRIPTION

GAS SCALE
 10 100 1000



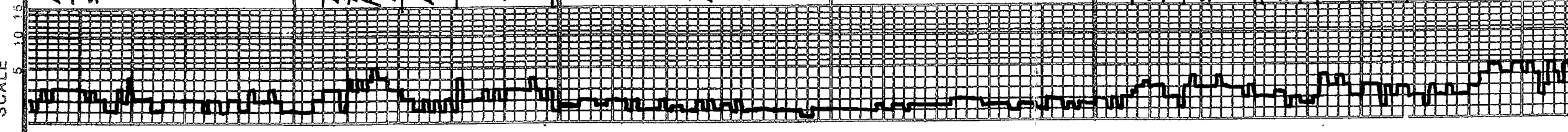
Lms. hvy. tes. wht. to GRM. chalked to 14.99.
 to tan; CR photo. to v. fin. x/h. sub. to blk.
 sub. succe. to su. cr. d. w. 14. to 14.91.
 fluor. j. No cut, hvy. tes. pr. to 14.

WATI 01 011

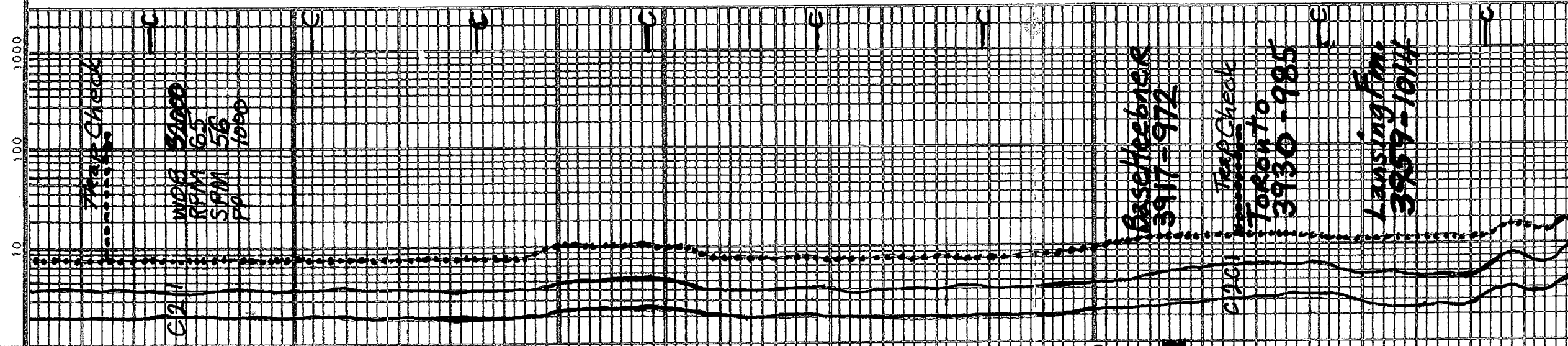
DRILL TIME SCALE

SAMPLE DESCRIPTION

GAS SCALE



3700
3800
3900



Lms. hv. tes. wht. to cream. chalk & tks. lt. gray. to tan; CR. Pto. to v.v. fm. x. lms. sub-chalk sub-sucro. to su. cro. dul. H. to H. yel. fluor. j. No cut; hv. tes. pr. to a micro-pp. to interx. p. or.

Lms. tes. wht. to cream. chalk & tan; crypto to v.v. fm. x. lms. sub-chalk, sub-sucro. & packstn; dul. H. to H. yel. fluor. j. No cut; No Vis for

Lms. similar 3700-3756

Lms. similar 3756-3771

Lms. abn. wht. to cream chalk & tan; grayish. IP's; crypto to v.v. fm. x. lms. sub-chalk, sub-sucro. to v. sucro. dul. H. to H. yel. fluor. j. No cut; abn. pr. to tks. fr. micro-pp. to interx. p. or.

Lms. similar 3756-3771

Sh. v. drk. gray. to black-carb.

Sh. H. gray. to H. green; v. soft & mushy when wet

Lms. hv. tes. wht. to cream chalk & H. tan to tan; crypto to v.v. fm. x. lms. sub-chalk, sub-sucro. to sucro. dul. H. to H. yel. fluor. j. No cut; abn. pr. to interx. p. or. micro-pp. & prab. interx. p. or.

Lms. grayish. tan to tan; crypto. to v.v. fm. x. lms. sub-chalk, sub-sucro & packstn; dul. H. yel. to tks. H. yel. fluor. j. No cut; No Vis for

Lms. H. to med. gray. - shaly. to grayish. tan to tan; crypto. to v.v. fm. x. lms. sub-chalk, sub-sucro & packstn; dul. H. yel. fluor. j. No cut; No Vis for

TRAP CHECK

WOB 3700
RFM 63
SFM 56
PP 1050

Bascheebner
3917-972

TRAP CHECK
FORENTO
3930-985

Lansing fm.
3959-1014

Lms. H. to med. grey - shly to grayish. tan to tan; crypto. to v.v. fm. xln; tres. sub-chlk, sub-sucro + packstn; dul. H. yel-fluor. IP's; No Cut; No Vis. Por.

Lms. extra. zbn. wht to crm. chlk + crm. to tan; grayish. IP's; crypto. to v.v. xln sub-chlk, sub-sucro. to tres. sucro. dul. H. to H. yel-fluor; No cut; hy. tres. pr. to fr. micro-pp. to interxln por.

Lms. hy. tres. wht. to crm. chlk + crm. to tan; grayish. IP's crypto. to v.v. xln; subchlk sub-sucro + packstn; dul. H. yel-fluor. No Cut; No Vis. Por.

Sh. med. gray - calc. IP's
Lms. tres. wht. to crm. - chlk + grayish tan to tan; crypto. to v.v. xln; sub-chlk, sub-sucro. to tres. sucro. dul. H. to H. yel-fluor. No cut; No Vis. Por.
Lms. extra. zbn. wht. to crm. chlk + crm. to tan; grayish. IP's; crypto. to v.v. xln; sub-chlk, sub-sucro. to tres. sucro. dul. H. to H. yel-fluor. No cut; No Vis. Por.
Lms. hy. tres. wht. to crm. chlk + crm. to tan; grayish. IP's; crypto. to v.v. xln; subchlk sub-sucro + packstn; dul. H. yel-fluor. No Cut; No Vis. Por.

4065-4077 Lms. similar 4019-4037

Lms. H. to med. gray. shly; crypto. xln sub-chlk + or shly to packstn; grading to pale. Shs. IP's; No Fluor. No Cut; No Vis. Por. w/ tres. med. gray. Sh.

4089-4100 Lms. similar 4019-4037

Lms. hy. tres. wht. to crm. - chlk + grayish. tan to tan; crypto. to v.v. xln; sub-chlk, sub-sucro. to sucro + tres. packstn. IP's sl. to v. oolitic for sl. to v. oolitic IP's dul. yel-fluor; No cut; hy. tres. pr. to tres. pr. oolitic for por. + m. a. fr. xbn. pr. to fr. micro. pp. + interxln. por.

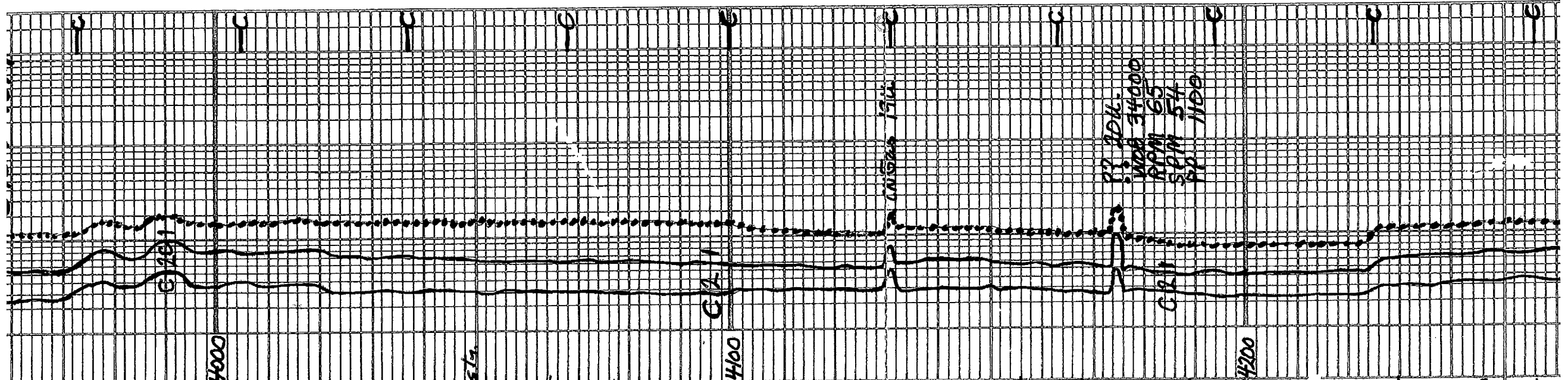
Lms. w/Shs similar 4077-4089

Lms similar 4400-4425 w/zbn wht to crm. - chlk

Lms w/Sh similar 4077-4089

Lms. extr. zbn. wht, tan to lt. gray - chlk + lt. gray to grayish tan + tres. tan; crypto. to v.v. xln; sub-chlk, sub-sucro. to tres. sucro + tres. packstn; dul. H. yel-fluor. IP's No Cut; No Vis. Por.

4330-4320 Interbedded Lmsts + Shs.
Lms. tres. wht. to crm. - chlk + grayish. tan to tan; crypto. to v.v. xln; subchlk, sub-sucro + packstn; IP's. sl. to pale oolitic and tres sub-lithog. dul. H. to H. yel-fluor. No Cut. Scattered



4320-4320 Interbedded lms + sh.
Lms. tes. wht. to cream-chalk grayish tan
to tan, crypto to v. v. fl. sh. sub-chalk,
sub-sucro + packstn; IP's sl. to foly
oolitic and tes sub-lithog. id. du. H
to H. yellow. No cut, scattered
tes. pr. to fa. micro-pp + poss. interxl.
por.

Lms. H. to med. gray. - sl. to v. Shly.
grading. to med. gray. sl. to extly
calc. Shs.; sub-chalk + v. shly to
packstn; No flwor; No cut;
No vis for.

Sh. med. to drk. gray. - sl. to extly
calc. IP's

4320-4380 Lms. tes. to sub. wht. to cream
chlk + H. gray. to tan; crypto. to v. v. fl. sh.
sub-chalk, sub-sucro. + packstn. IP's
sl. to v. oolitic; id. yellow. floor
No cut; tes. pr. to fa. oolitic + por
+ or tes. pr. micro-pp. per. IP's

Lms. H. gray. to grayish. tan; crypto to
v. v. fl. sh. tes. sub-chalk, sub-sucro
+ packstn. + tes. sub-lithog. id. wht. H
yellow. floor. IP's; No cut; No vis for

Sh. v. drk. gray to black-carb
Sh. med. to drk. gray. sl. to optly calc
grading to v. shly. Lms. to
4401-4410 Lms. v. sh. wht. to cream-chalk
+ H. gray. to grayish tan; crypto. to v. v. fl. sh.
sub-chalk, sub-sucro. + packstn; scattered
tes. Phantoms oolitic to oolitic. tes. scattered
drk. yellow. floor. IP's; No cut; sl. tes
pr. to sl. tes for calcitic to
micro-pp por

4418-4444 Lms. H. gray to grayish. tan; crypto
to v. v. fl. sh. tes. sub-chalk, sub-sucro,
+ packstn. tes. sub-lithog. id. wht. yellow. floor.
sub-lithog. id. wht. yellow. floor. No vis for

Lms. Similar 4401-4428

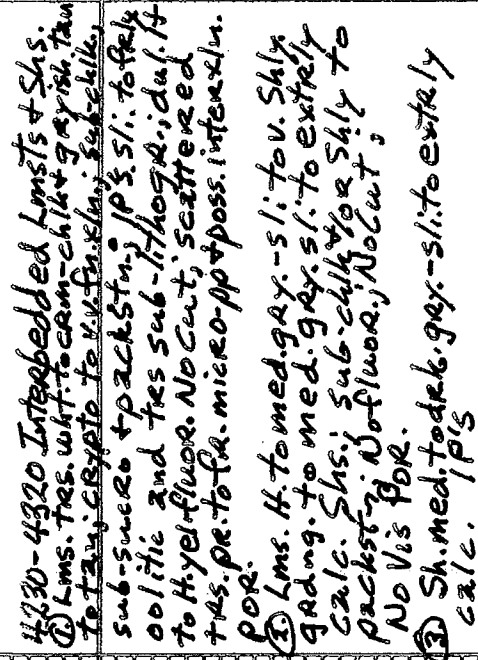
Lms. Similar 4428-4444

Lms. Similar 4401-4428

Lms. Similar 4428-4444

4541-4541 Lms. H. med. to tes drk. gray.
foly to v. shly. grading. to calc. Shs.;
crypto. to v. v. fl. sh. sub-chalk, sub-sucro, shly
sl. tes. sub-sucro + packstn;
No flwor; No cut; No vis for

4541-4550 Lms. H. gray. to tanish. gray.
crypto. to v. v. fl. sh. sub-chalk, sub-sucro.



Trap Check

C2

4300

Kansas City
4390-4415

MOB 38000
RPM 67
SPM 54
PP 1100

Trap Check

C2

4500

MOB 35000
RPM 70
SPM 54
PP 1000

MOB 31000
RPM 70
SPM 54
PP 1000



4511-4541 Lms. H. med. to tes. drk. gry. fely. to v. shly. gradng. to calc. sh. s. crypto. to v. v. fn. x. n. subch. l. sh. s. sh. s. sub-sucro. & pack. s. sh. s. No fluor., No cut. No vis. for.

4541-4550 Lms. H. gry. to tanish gry. crypto. to v. v. fn. x. n. sub-sucro. pack. s. sh. s. sub-lithog. a. dul. yel. fluox. No cut. No vis. for w/tes. Chert H. to med. gry. - opaque

4550-4555 Lms. hyp. tes. wht. to cream-chalk. f. H. gry. i. oolitic; matrix s. sub-sucro. to sucro. dul. yel. fluox. No cut scattered tes. v. or micro. po. & poss. inter. x. h. por.

4555-4580 Lms. similar 4571-4550 w/ No Chert

4580-4597 Lms. tes. wht. to cream-chalk. + tanj. crypto. to v. v. fn. x. n. w/tes. wht. to clear, med. to coarse calc. x. l. s. fragm. v. to extra. oolitic to sl. oolitic; matrix sub-chalk. sub-sucro. to tes. sucro. pack. s. sh. s. sub-lithog. a. dul. yel. fluox. No cut. No vis. for. No fluor. to tes. for oolitic. v. micro. po. & inter. x. h. por.

Lms. H. gry. tanish lps. crypto. to v. v. fn. x. n. sub-sucro. & pack. s. sh. s. dul. yel. fluox. No cut. No vis. for

Sh. v. drk. gry. to black-carb.

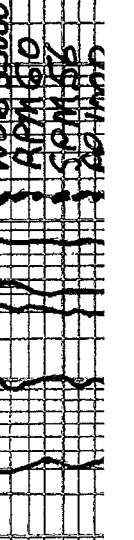
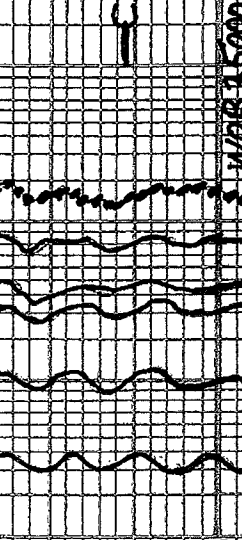
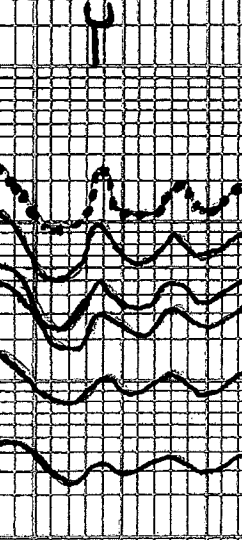
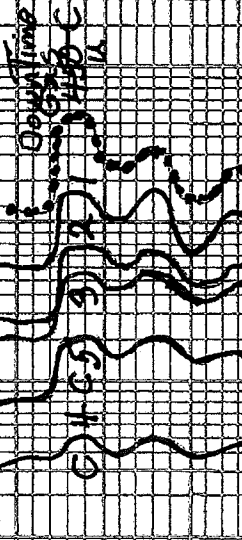
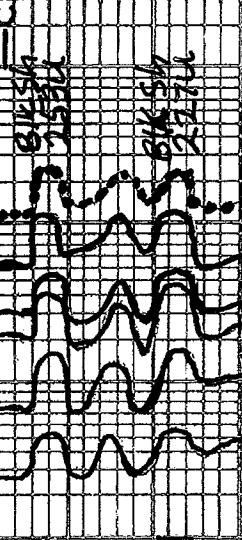
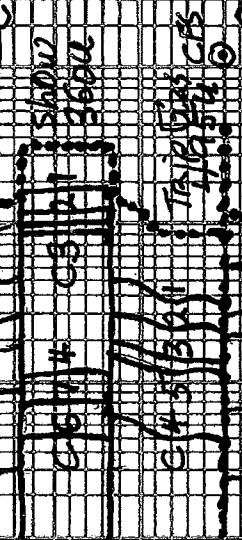
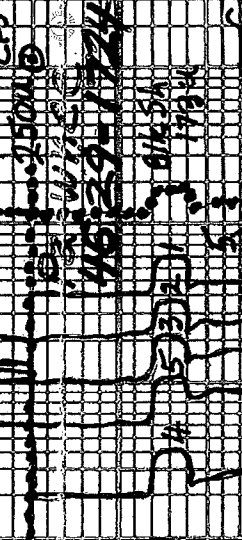
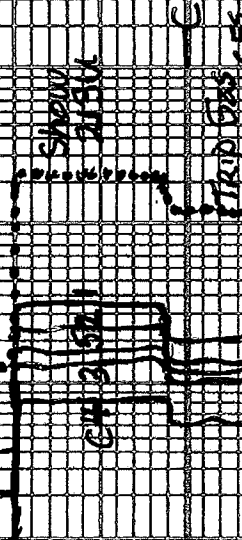
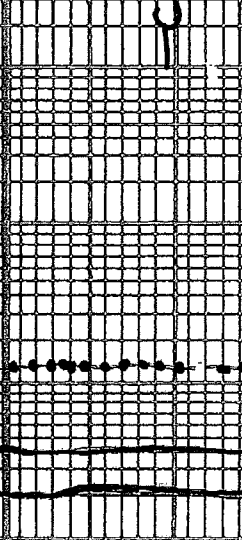
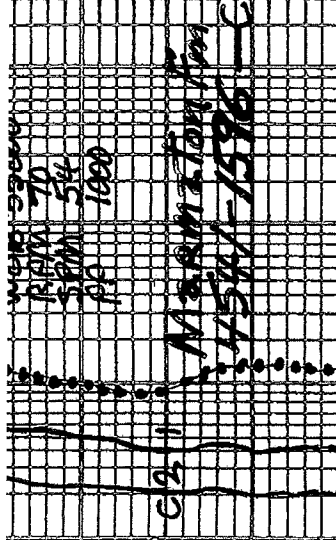
Lms. similar 4597-4624
4637-4655 Lms. tes. wht. to cream-chalk. + tanj. hyp. tes. s. drk. tanj. to even oil str. faint oil odor. sub-sucro. to v. v. fn. x. n. sub-chalk. sub-sucro. to sucro. tes. to by boss (spongy) phant. oolitic. No tanj. to dul. yel. fluox. No cut. No vis. for. No fluor. to tes. for oolitic. v. micro. po. & inter. x. h. por.

4655-4666 Lms. similar 4597-4624 w/tes. foss & tes. oolites

Sh. v. drk. gry. to black-carb

Lms. similar 4597-4624 w/tes. foss and tes. oolites

Sh. v. drk. gry. to black-carb



4685-4921. Interspersed. Lmst's & Shales

① Lms. tes. wht. to cream-chalk. H. gry. to tanj. crypto. to v. v. fn. x. n. sub-sucro. pack. s. sh. s. sub-lithog. a. dul. yel. fluox. No cut. No vis. for

② Lms. med. to v. drk. gry. v. to v. shly. shly.

4685-4921 Interbedded Lmsts & Shales
 (1) Lms. fns. wht. to cam. chkd. H. grey to tan
 crypto. to v. fn. xlm. sub-succ. packst.
 + fns. sub-lithog. scattered fns. boss
 d. ul. yel. to d. wh. H. yel. Fluor. j. No cut
 No vis. por.

(2) Lms. med. to v. drk. grey-v. to v. shly
 grading. to extly. calc. sts. crypto. to
 v. v. fn. xlm. sub-chile. for shly. packst.
 + sub-lithog. j. No fluor. j. No cut
 No vis. por.

(3) Sh. med. to v. drk. grey-slt. to extly
 calc. lps

(4) Sh. v. drk. grey. to black-carb.
 + scattered trs. chert H. to med. grey
 + tan-opaque

4921-4953 Sh. med. to drk. grey w/
 abn. interbeds Lmsts. similar to
 #1 + #2 descriptions 4685-4921

4953-4981 Sh. med to drk. grey, silty lps
 w/ scattered interbeds Lmsts similar
 to #1 + #2 descriptions 4685-4921

4981-4998 Qtz. sst. ban. from oil stn
 v. ul. to v. fn. + trs. fn. gr. aug. por
 to pr. s. or. to abn. clay for silt
 filling, scattered trs. glauc. to och. loamite
 fns. to hvy. trs. finely disseminated pyr.
 dul. gl. to gid. yel. fluor. in alr.
 drkd. sand w/ flush to excel. stemming.
 cuts; hvy. fns. to abn. por. to trs. microsp.
 to intergr. por. Quest. P. 8. 1. 1. 1.
 Interbedded fine gradational Lms, sp. + siltst
 (1) Lms. H. grey. to greyish. Tan. crypto. to v. tan. xlm. j.
 silty. lps; packst. + sub-lithog. d. ul. yel. fluo.
 No cut; No vis. por. (2) Sh. med. to drk. grey-slt. to
 silty lps. (3) Siltst. H. to med. grey-v. to extly. filled
 Qtz. sst. similar to 4981-4998

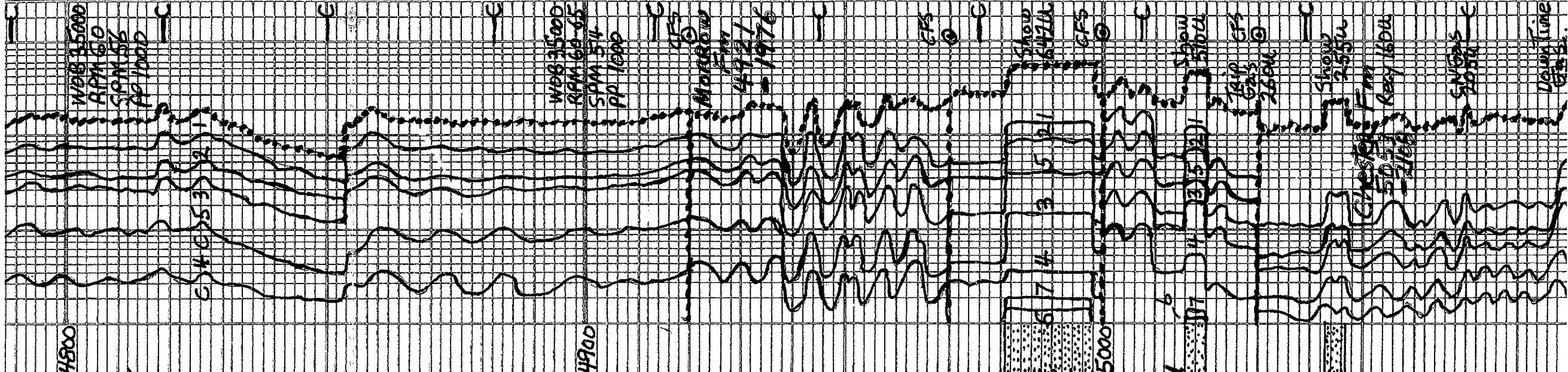
5020-5043 Interbedded to gradational
 Lmsts, Shs + siltst. similar
 4998-5016

5043-5047 Qtz. sst. tan to blk. from oil
 stn; v. v. fn. gr. to v. fn. gr. aug. j. pr. to
 fine sort; trs. to v. abn. blk. mica. lps
 + sh. fragm. clay filled lps. silty
 yel. fluo. w/ flush to excel. stemming
 cuts; abn. por. to trs. microsp. to
 intergr. por. lps (see 5020)

5047-5116 Interbedded to gradational
 Lmsts; Shs, scattered trs. siltst. and
 trs. Qtz. sst. poss. from above

(1) Lms. H. grey. Tanish. gray. to grayish. Tan. j.
 crypto. to fns. v. v. fn. xlm. j. fns. sub-succ.
 packst. + sub-lithog. d. ul. H. yel. fluo.
 lps; No cut; No vis. por.

(2) Sh. med. to drk. grey - trs. slt. to v. silty
 (3) Scattered trs. siltst. med. grey in



trs. Qtz, sdst pass. from above
 ① Lms. H. gray, tanish gray, to grayish tan; crypto. totals. v.v. fine. xln.; trs sub-sucro; p. chert. + sub-lith. gray; dal. th. yellow. fluor. IP's; No Cut; No Vis. for.
 ② Sh med to dk. gray. - trs sl. to v. silty
 ③ Scattered trs. silt-stained gray / Show
 ④ Scattered trs. Qtz 2.5 sub-stw / Show
 Sim. loc. 4981-4998 & 5043-5047
 Prob. Carving's 311

516-5127 Sh. H. to med gray w/ matt to earthy texture - soft & mushy
 5127-5134 Lms. grayish tan to tan, crypto to v.v. fine; sub-chalk, sub-sucro, p. chert + trs sub-lith. gray, dal. th. yellow. fluor. IP's; No Cut; No Vis. for.; w/ trs chert gray.
 5134-5149 Lms. abn. white to cream-chalk w/ sl. dk. tan - spid. to even oil stain; earthy. oolitic (sm. med. trs) matrix sub-chalk, sub-sucro to sucro; dal. gl. in tog/dm. yellow. fluor. w/ trs having flush togd staining cuts + w/ family to Ring Cut; 2 bu. pp. to R. trs. gd. matrix - pp. to inter. in porosity + trs p. tota. inter. oolitic por. IP's + abn. loose oolites w/ trs. chert gray + tan + orange opque

5149-5211 Lms. trs. wht. to cream-chalk + cream to tan, grayish. IP's; crypto to v.v. fine. xln.; v. to ext. fine. oolitic (sm. med. + lg.) matrix sub-chalk sub-chalk sub-sucro + p. chert + dal. yellow. fluor.; No Cut; No Vis. for.; w/ trs. chert gray, tan to orange; opque to trans.

Lms. abn. white to cream-chalk w/ chalk oolites IP's + tr. gray, tanish gray to grayish tan; ext. oolitic (med. lg. + trs sm.) matrix sub-chalk; trs. sub-sucro + p. chert. dal. yellow. fluor.; No Cut; No Vis. for. w/ trs. chert gray, tan to orange; opque to trans.

5218-5240 Lms similar 5149-5211

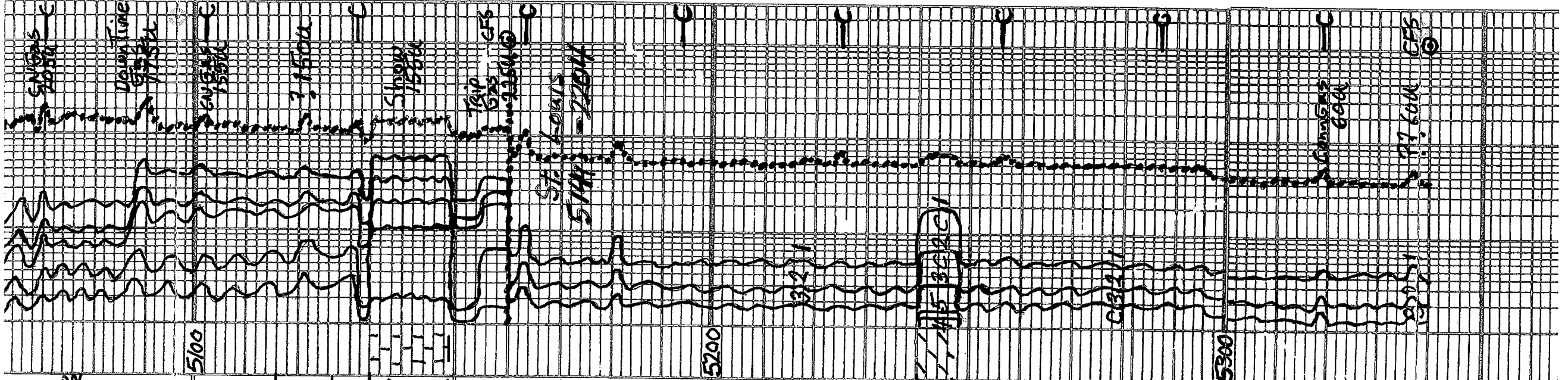
Dolo. lt. gray, v. fine xln. sub-sucro to sucro yellow. fluor.; No Cut; No Vis. for.

5247-5311 Lms. sil. dolomitic IP's; lt. gray, tanish gray to grayish tan; crypto. to v.v. fine. xln.; trs sub-chalk, trs sub-sucro, p. chert. and sub-lith. gray, abn. p. chert. oolitic IP's to trs oolitic IP's; dal. yellow. fluor.; No Cut; No Vis. for. w/ trs to hv. trs. chert gray to tan, orange IP's; opque to trans.

5311-5340 Lms similar 5247-5311 becoming more dolomitic IP's w/ trs. wht, med to coarse calc xls. + frags. auts.

TD 5340

7 1/2 inch Bit Info:
 #1 New Teicone Button
 GT GT2 XG
 in AT 1792 out AT 4610
 in 110... Tail...



1 U 5340

7 1/8 inch Bit Info:
 #1 New Tricone Button
 GT GT2 XG
 in AT 1792 out AT 4610
 #2 New Tricone Button
 Smith FZT IHY
 in AT 4610 out AT 5340 TD
 Cir Points:
 1. 4610 5. 5000
 2. 4660 6. 5090
 3. 4920 7. 5160
 4. 4970 8. 5340

Dev. SURV.
 1. 652 3/4° 5. 4610 3/4°
 2. 1792 1 1/4° 6. 5030 2°
 3. 1792 1 1/4° 7. 5160 3/4°
 4. 2414 1° 8. 5340 1 1/4°
 Daily Drilling Progress

1	3325	7:00 AM	1-7-15
2	3700	12:05 AM	1-8-15
3	3855	7:00 AM	1-8-15
4	4298	7:00 AM	1-9-15
5	4610	7:00 AM	1-10-15
6	4610	7:00 AM	1-11-15
7	4660	7:00 AM	1-12-15
8	4792	7:00 AM	1-13-15
9	5006	7:00 AM	1-14-15
10	5030	7:00 AM	1-15-15
11	5160	7:00 AM	1-16-15
12	5214	7:00 AM	1-17-15
13	5340 TD	7:00 AM	1-18-15

DST #1 Marston 4578-4610
 ID Bob 18min FO Bob 27min
 Rec 850ft xw Schl 5700ppm
 pilch 3700ppm

Rw = .18 @ 570F pH 7.5 Max Temp 121°F
 IHP 2206
 IFP 13-225 in 30min FHP 1298 in 60min
 FSIP 1301 in 60min FHP 2196

DST #2 Pawnee Straddle Test

IO Bob 65min 88 2"
 FO Bob 11min 88 11"
 Rec 470' Total Fluid + 1100' G.I.P
 45' clean oil 100% oil
 85' OSWM 38 oil 40 wtr 578 mud
 340' xw 100% xw

Grav. oil 38° at 60°F
 chl 12400ppm Pilch 3600ppm
 pH 7.5 Max Temp 122°F
 IHP 2245 FFP 125-248 in 60min
 IFP 35-113 in 30min FHP 1311 in 120min
 FSIP 1302 in 60min FHP 2237

DST #3 Morrow 4984-5030
 IO weak blow incr to 1" in 20min FO No Blow
 Rec 30" Delg Mud 100% Mud - Oil Speds in Tool
 IHP 2447 FFP 34-35 in 30min
 IFP 16-32 in 30min FSIP 425 in 120min
 FSIP 407 in 60min FHP 2443

DST #4 Basal Chester 5136-5160

ID surf to 4.5" No blow back
 FO surf to 4.0" No blow back
 Rec 175' Total Fluid + 180' G.I.P
 20' HOCM - 30% oil - 70% Mud
 155' OSMCW 2% oil - 88% xw: 10% mud
 chl 9300ppm Pilch 3400ppm Rw .1054°F
 pH 7.0 Max Temp 130°F
 IHP 2506 FFP 62-111 in 60min
 IFP 23-59 in 30min FSIP 1364 in 120min
 FSIP 1370 in 60min FHP 2499

Mud Info:

Date	1-6	1-7	1-8	1-9	1-10	1-11	1-12	1-13
Time	9:30A	10:30A	11:30A	12:30A	1:30A	2:30A	3:30A	4:30A
Depth	2924	3357	3944	4370	4610	4635	4660	4688
Wt.	9.3	9.45	9.0	9.4	9.25	9.2	9.35	9.35
Vis	29	32	71	46	48	57	48	55
PV	2	3	20	12	15	14	14	17
YP	2	4	25	11	13	14	13	20

IHP 2506 FFP 62-111 in 60 min
 IHP 23-59 in 30 min FSP 1362 in 120 min
 IHP 1370 in 60 min FHP 2499

Mud Info:

Date	1-6 8:20A	1-7 8:10A	1-8 8:20A	1-9 9:45A	1-10 11:20A	1-11 11:55A	1-12 12:55A	1-13 1:25P
Depth	2924	3357	3944	4370	4610	4635	4660	4688
Wt.	9.2	9.45	9.0	9.4	9.25	9.2	9.35	9.35
Vis	29	32	71	46	48	57	48	55
PV	2	3	20	12	15	14	14	17
YP	2	4	25	11	13	14	13	20
GS	2/3	3/4	20/63	8/37	7/31	8/30	8/31	18/4
NL	N/C	N/C	9.2	9.6	7.6	8.4	8.0	9.6
Cake	-	-	1/32	1/32	1/32	1/32	1/32	1/32
pH	7.0	7.0	10.5	9.0	10.5	10.0	10.0	10.0
Chl	4400	1800	3800	3700	3000	3600	3900	4400
Ca	HVY	HVY	100	40	10	40	20	80
LCM	1/2	1	1 1/2	2	3	3	3	3 1/2

Date	1-14 10:20A	1-15 6:40A	1-16 12:50P	1-17 6:15A
Depth	5030	5030	5160	5219
Wt.	9.45	9.5	9.4	9.35
Vis	61	48	50	60
PV	14	14	15	18
YP	18	16	17	20
GS	17/53	19/46	16/49	17/55
NL	10.8	11.2	10.0	8.8
Cake	1/32	1/32	1/32	1/32
pH	9.0	9.0	9.2	9.0
Chl	3700	5100	3500	3800
Ca	120	140	40	20
LCM	3	3 1/2	3	3

OPERATOR Berexco LLC LOCATION 1650 FNL + 1650 FWL SNG. 34 W
 LEASE Stacy SEC. 24 TWP. 26 S COUNTY Finney STATE Kansas
 ELEVATION 2945 HB RTD 5340