



TRILOBITE TESTING, INC

DRILL STEM TEST REPORT

Samuel Gary Jr & Associates

25-10s-30w Sheridan

1515 Wynkoop
STE 700
Denver Co 80202
ATTN: Chris Mitchell

K&K Farms 1-25

Job Ticket: 61145 **DST#: 4**

Test Start: 2015.01.27 @ 22:30:57

GENERAL INFORMATION:

Formation: **Altamont**

Deviated: No Whipstock: ft (KB)

Time Tool Opened: 00:49:52

Time Test Ended: 06:51:51

Test Type: Conventional Straddle (Reset)

Tester: Ray Schwager

Unit No: 70

Interval: 4342.00 ft (KB) To 4387.00 ft (KB) (TVD)

Reference Elevations: 2905.00 ft (KB)

Total Depth: 4552.00 ft (KB) (TVD)

2897.00 ft (CF)

Hole Diameter: 7.85 inches Hole Condition: Fair

KB to GR/CF: 8.00 ft

Serial #: 8018

Inside

Press@RunDepth: 237.92 psig @ 4345.00 ft (KB)

Capacity: 8000.00 psig

Start Date: 2015.01.27

End Date:

2015.01.28

Last Calib.: 2015.01.28

Start Time: 22:30:57

End Time:

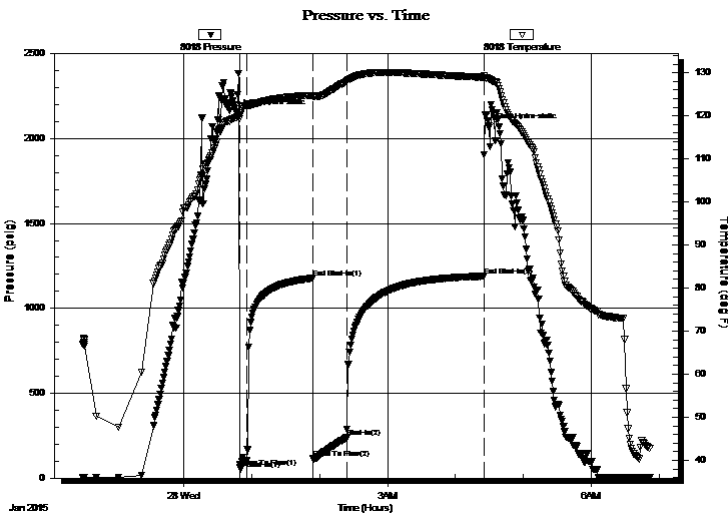
06:51:51

Time On Btm: 2015.01.28 @ 00:46:52

Time Off Btm: 2015.01.28 @ 04:29:51

TEST COMMENT: 5-IFP-w k to strg in 5 min
60-ISIP-no bl
30-FFP-w k to strg in 3 min
120-FSIP-surface bl bk

PRESSURE SUMMARY



Time (Min.)	Pressure (psig)	Temp (deg F)	Annotation
0	2146.71	119.65	Initial Hydro-static
3	62.14	120.20	Open To Flow (1)
9	103.81	122.43	Shut-In(1)
67	1178.10	124.75	End Shut-In(1)
68	114.71	124.42	Open To Flow (2)
97	237.92	127.98	Shut-In(2)
218	1190.01	128.95	End Shut-In(2)
223	2066.71	128.56	Final Hydro-static

Recovery

Length (ft)	Description	Volume (bbl)
0.00	580' GIP	0.00
125.00	SOCW 1%O99%W	1.48
410.00	HO&GCMW 25%G20%O25%M30%W	5.75

* Recovery from multiple tests

Gas Rates

Choke (inches)	Pressure (psig)	Gas Rate (Mcf/d)



**TRILOBITE
TESTING, INC**

DRILL STEM TEST REPORT

FLUID SUMMARY

Samuel Gary Jr & Associates

25-10s-30w Sheridan

1515 Wynkoop
STE 700
Denver Co 80202
ATTN: Chris Mitchell

K&K Farms 1-25

Job Ticket: 61145

DST#: 4

Test Start: 2015.01.27 @ 22:30:57

Mud and Cushion Information

Mud Type: Gel Chem
Mud Weight: 9.00 lb/gal
Viscosity: 68.00 sec/qt
Water Loss: 7.16 in³
Resistivity: ohm.m
Salinity: 750.00 ppm
Filter Cake: 1.00 inches

Cushion Type:
Cushion Length: ft
Cushion Volume: bbl
Gas Cushion Type:
Gas Cushion Pressure: psig

Oil API: deg API
Water Salinity: 43000 ppm

Recovery Information

Recovery Table

Length ft	Description	Volume bbl
0.00	580' GIP	0.000
125.00	SOCW 1%O99%W	1.480
410.00	HO&GCMW 25%G20%O25%M30%W	5.751

Total Length: 535.00 ft Total Volume: 7.231 bbl

Num Fluid Samples: 0

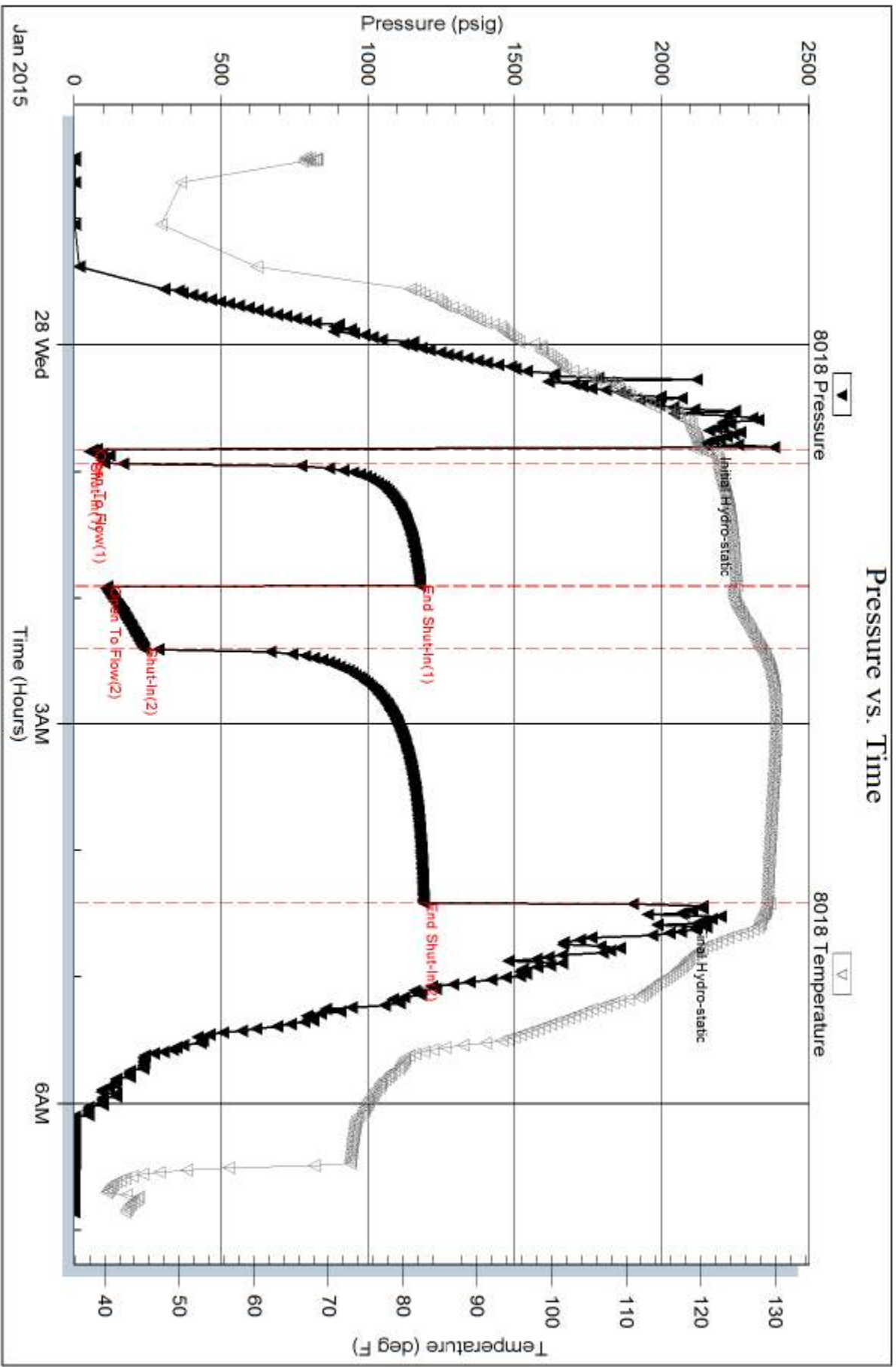
Num Gas Bombs: 0

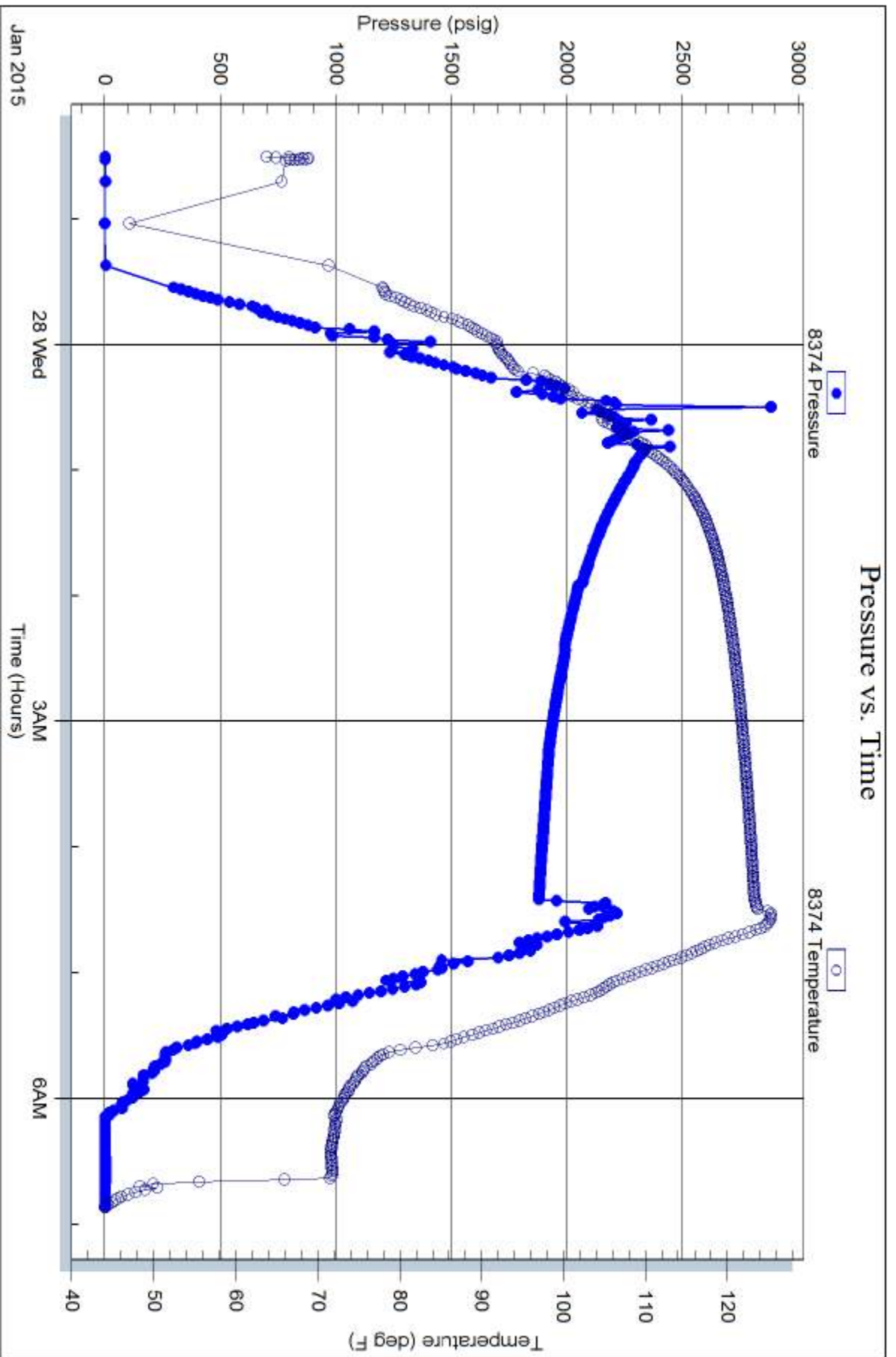
Serial #:

Laboratory Name:

Laboratory Location:

Recovery Comments: RW .23 @ 50F





Serial #: 8652

Fluid

Samuel Gary Jr & Associates

K&K Farms 1-25

DST Test Number: 4

