

**OPERATOR**

Company: JASON OIL COMPANY, LLC  
 Address: 3718 183RD ST  
 P.O. BOX 701  
 RUSSELL, KS 67665  
 Contact Geologist: SHELDON WEIGEL  
 Contact Phone Nbr: (785) 483-4204  
 Well Name: REIN A #4  
 Location: W2 SE SW SE Section 22 - 14S - 13W  
 API: 15-167-24058-00-00  
 Pool:  
 State: KANSAS  
 Field: HALL - GURNEY  
 Country: USA

Scale 1:240 Imperial

Well Name: REIN A #4  
 Surface Location: W2 SE SW SE Section 22 - 14S - 13W  
 Bottom Location:  
 API: 15-167-24058-00-00  
 License Number: 33813  
 Spud Date: 4/19/2017 Time: 12:00 AM  
 Region: RUSSELL COUNTY KANSAS  
 Drilling Completed: 4/25/2017 Time: 12:57 AM  
 Surface Coordinates: 330' FSL & 1930' FEL  
 Bottom Hole Coordinates:  
 Ground Elevation: 1709.00ft  
 K.B. Elevation: 1719.00ft  
 Logged Interval: 2100.00ft To: 3230.00ft  
 Total Depth: 3230.00ft  
 Formation: LANSING - KANSAS CITY; ARBUCKLE  
 Drilling Fluid Type: FRESH WATER / CHEMICAL GEL

**SURFACE CO-ORDINATES**

Well Type: Vertical  
 Longitude: -98.7502155  
 Latitude: 38.8138699  
 N/S Co-ord: 330' FSL  
 E/W Co-ord: 1930' FEL

**LOGGED BY**

Company: BIG CREEK CONSULTING, INC.  
 Address: 1909 MAPLE  
 ELLIS, KS 67637

Phone Nbr: (785) 259-3737  
 Logged By: GEOLOGIST

Name: JEFF LAWLER

**CONTRACTOR**

Contractor: SOUTHWIND DRILLING  
 Rig #: 1  
 Rig Type: MUD ROTARY  
 Spud Date: 4/19/2017

Time: 12:00 AM

Contractor: SOUTHWIND DRILLING  
 Rig #: 1  
 Rig Type: MUD ROTARY  
 Spud Date: 4/19/2017  
 TD Date: 4/25/2017  
 Rig Release: 4/25/2017

Time: 12:00 AM  
 Time: 12:57 AM  
 Time: 3:00 PM

### ELEVATIONS

K.B. Elevation: 1719.00ft  
 K.B. to Ground: 10.00ft

Ground Elevation: 1709.00ft

### NOTES


DUE TO ECONOMICAL RECOVERY ON DST #2 5 1/2" PRODUCTION CASING WAS RUN TO FURTHER EVALUATE THE ARBUCKLE WITH PERFORATION.

RESPECTFULLY SUBMITTED,  
 JEFF LAWLER

### WELL COMPARISON SHEET

FORMATION	REIN A #4				REIN A #2				REIN A #1				REIN #5				STRECKER #1											
	1719		1709		1736		1742		1730		1761		1761		1761		1761											
	LOG TOPS		SAMPLE TOPS		LOG TOPS		SAMPLE TOPS		LOG TOPS		SAMPLE TOPS		LOG TOPS		SAMPLE TOPS		LOG TOPS											
	DEPTH	DATUM	DEPTH	DATUM	DEPTH	DATUM	DEPTH	DATUM	DEPTH	DATUM	DEPTH	DATUM	DEPTH	DATUM	DEPTH	DATUM	DEPTH	DATUM										
ANHYDRITE TOP	849	1070	656	1063	857	1069	+	1	-	6	674	1068	+	2	-	5	662	1068	+	2	-	5	732	1029	+	43	-	38
BASS	661	1038	689	1030	702	1034	+	4	-	4	709	1033	+	5	-	3							765	996	+	42	-	34
TARKIO	2226	-507	2224	-505	2244	-508	+	1	+	3	2250	-508	+	1	+	3	2234	-504	-	3	-	1	2358	-507	-	00	+	92
TOPEKA	2561	-842	2567	-843	2579	-843	+	1	+	0	2582	-840	-	2	-	3							2630	-869	-	27	+	26
HEEBNER SHALE	2791	-1072	2792	-1073	2812	-1076	-	4	+	3	2816	-1074	+	2	+	3	2801	-1071	-	1	-	2	2861	-1100	-	28	+	27
TORONTO	2809	-1090	2811	-1092	2830	-1094	+	4	+	2	2834	-1092	+	2	+	0							2878	-1117	-	27	+	25
DOUGLAS SHALE	2893	-1174																										
LKC	2857	-1138	2858	-1139	2878	-1142	+	4	+	5	2880	-1138	+	0	-	3	2869	-1130	-	1	+	0	2928	-1167	-	29	+	28
BKC	3152	-1413	3135	-1416	3149	-1415	+	0	-	3	3153	-1411	-	2	-	5							3196	-1375	-	36	-	41
ARBUCKLE	3146	-1427	3154	-1435	3174	-1438	+	11	+	3	3174	-1432	+	5	-	3	3159	-1429	-	2	-	6	3220	-1458	-	92	+	24
RTO			3230	-1511	3182	-1446				65	3182	-1440				71							3230	-1469				42
LTD	3230	1511																										

### DST #1 LKC B - C 2866' - 2910'



**TRILOBITE TESTING, INC.**

## DRILL STEM TEST REPORT

Jason Oil Company LLC

22/14S/13W/Russell II

Rein A#4

Job Ticket: 64825      DST#: 1

Test Start: 2017.04.23 @ 11:48:00

---

**GENERAL INFORMATION:**

Formation: **Lansing/Kansas City**  
 Deviated: No Whipstock      ft (KB)  
 Time Tool Opened: 13:09:30  
 Time Test Ended: 17:21:30  
 Test Type: Conventional Bottom Hole (Initial)  
 Tester: Ken Swinney  
 Unit No: 72 Hays/64  
 Interval: **2866.00 ft (KB) To 2910.00 ft (KB) (TVD)**  
 Total Depth: 2910.00 ft (KB) (TVD)  
 Hole Diameter: 7.80 inches Hole Condition: Fair  
 Reference Elevations: 1719.00 ft (KB)  
 1709.00 ft (CF)  
 KB to GR/CF: 10.00 ft

---

**Serial #: 8648      Inside**

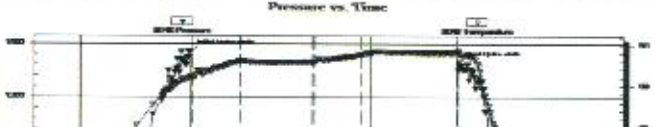
Press@RunDepth: 83.39 psig @ 2906.00 ft (KB)      Capacity: 9000.00 psig  
 Start Date: 2017.04.23      End Date: 2017.04.23      Last Calib: 2017.04.23  
 Start Time: 11:48:05      End Time: 17:21:29      Time On Btm: 2017.04.23 @ 13:08:30  
 Time Off Btm: 2017.04.23 @ 15:55:00

---

**TEST COMMENT:** I.F. 30 Minutes/Blow built to 7 inches  
 I.S.I 45 Minutes/ No blow back  
 F.F. 45 Minutes/ Blow built to 5 1/2 inches  
 F.S.I 60 Minutes/ No blow back

---

Pressure vs. Time



PRESSURE SUMMARY

Time (Mn.)	Pressure (psig)	Temp (deg F)	Annotation
0	1461.96	91.17	Initial Hydro-static
1	27.54	90.83	Open To Flow (1)
24	55.94	90.83	Stabilized (1)

**GENERAL INFORMATION:**

Formation: **Lansing/Kansas City**

Deviated: No Whipstock ft (KB)

Time Tool Opened: 13:09:30

Time Test Ended: 17:21:30

Test Type: Conventional Bottom Hole (Initial)

Tester: Ken Swinney

Unit No: 72 Hays/64

Interval: **2866.00 ft (KB) To 2910.00 ft (KB) (TVD)**

Reference Elevations: 1719.00 ft (KB)

Total Depth: 2910.00 ft (KB) (TVD)

1709.00 ft (CF)

Hole Diameter: 7.80 inches-Hole Condition: Fair

KB to GR/CF: 10.00 ft

**Serial #: 8648**

Inside

Press@RunDepth: 83.39 psig @ 2906.00 ft (KB)

Capacity: 8000.00 psig

Start Date: 2017.04.23

End Date: 2017.04.23

Last Calib: 2017.04.23

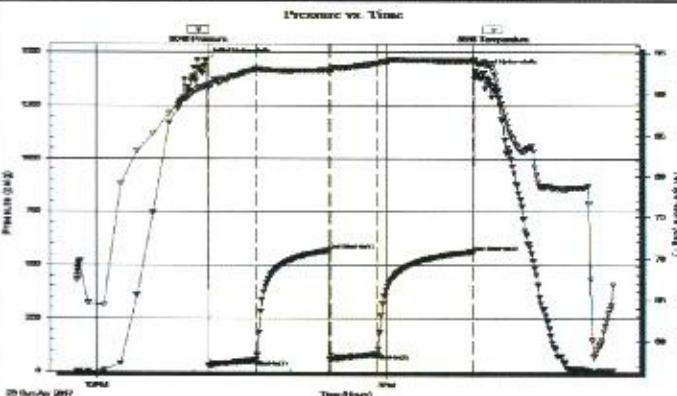
Start Time: 11:48:05

End Time: 17:21:29

Time On Btm: 2017.04.23 @ 13:08:30

Time Off Btm: 2017.04.23 @ 15:55:00

**TEST COMMENT:** LF 30 Minutes/Blow built to 7 inches  
 L.S.I 45 Minutes/ No blow back  
 F.F 45 Minutes/ Blow built to 5 1/2 inches  
 F.S.I 60 Mintues/ No blow back



**PRESSURE SUMMARY**

Time (Min.)	Pressure (psig)	Temp (deg F)	Annotation
0	1461.96	91.17	Initial Hydro-static
1	27.54	90.83	Open To Flow (1)
31	55.31	93.06	Shut-in(1)
76	566.56	92.92	End Shut-in(1)
77	60.57	92.84	Open To Flow (2)
106	83.39	93.76	Shut-in(2)
166	560.37	94.04	End Shut-in(2)
167	1410.39	93.98	Final Hydro-static

**Recovery**

Length (ft)	Description	Volume (bb)
120.00	Muddy Water w/oil spots in tool	1.68
0.00	Mud 20% Water 80%	0.00

**Gas Rates**

Choke (inches)	Pressure (psig)	Gas Rate (Mc/Day)

Trilobite Testing, Inc

Ref. No: 64825

Printed: 2017.04.23 @ 19:16:09

**DST #2 ARBUCKLE 3128' - 3161'**



**TRILOBITE TESTING, INC.**

**DRILL STEM TEST REPORT**

Jason Oil Company LLC

22/14S/13W/Russe II

PO Box 701  
 Russell Kansas  
 67665-0701  
 ATTN: Jeff Lawler

Rein A#4

Job Ticket: 64776

DST#: 2

Test Start: 2017.04.24 @ 14:24:00

**GENERAL INFORMATION:**

Formation: **Arbuckle**

Deviated: No Whipstock ft (KB)

Time Tool Opened: 15:50:30

Time Test Ended: 20:00:00

Test Type: Conventional Bottom Hole (Initial)

Tester: Ken Swinney

Unit No: 72 Hays/64

Interval: **3128.00 ft (KB) To 3161.00 ft (KB) (TVD)**

Reference Elevations: 1719.00 ft (KB)

Total Depth: 3161.00 ft (KB) (TVD)

1709.00 ft (CF)

Hole Diameter: 7.80 inches-Hole Condition: Fair

KB to GR/CF: 10.00 ft

**Serial #: 8648**

Inside

Press@RunDepth: 105.82 psig @ 3157.00 ft (KB)

Capacity: 8000.00 psig

Start Date: 2017.04.24

End Date: 2017.04.24

Last Calib: 2017.04.24

**DST #2 ARBUCKLE 3128' - 3161'**



**TRILOBITE TESTING, INC.**

**DRILL STEM TEST REPORT**

Jason Oil Company LLC

**22/14S/13W/Russell**

PO Box 701  
Russell Kansas  
67665+0701  
ATTN: Jeff Lawler

**Rein A#4**

Job Ticket: 64776

**DST#: 2**

Test Start: 2017.04.24 @ 14:24:00

**GENERAL INFORMATION:**

Formation: **Arbuckle**

Deviated: No Whipstock: ft (KB)

Time Tool Opened: 15:50:30

Time Test Ended: 20:00:00

Test Type: Conventional Bottom Hole (Initial)

Tester: Ken Swinney

Unit No: 72 Hays/64

Interval: **3128.00 ft (KB) To 3161.00 ft (KB) (TVD)**

Reference Elevations: 1719.00 ft (KB)

Total Depth: 3161.00 ft (KB) (TVD)

1709.00 ft (CF)

Hole Diameter: 7.80 inches Hole Condition: Fair

KB to GR/CF: 10.00 ft

**Serial #: 8648**

**Inside**

Press@RunDepth: 105.82 psig @ 3157.00 ft (KB)

Capacity: 8000.00 psig

Start Date: 2017.04.24

End Date: 2017.04.24

Last Calib: 2017.04.24

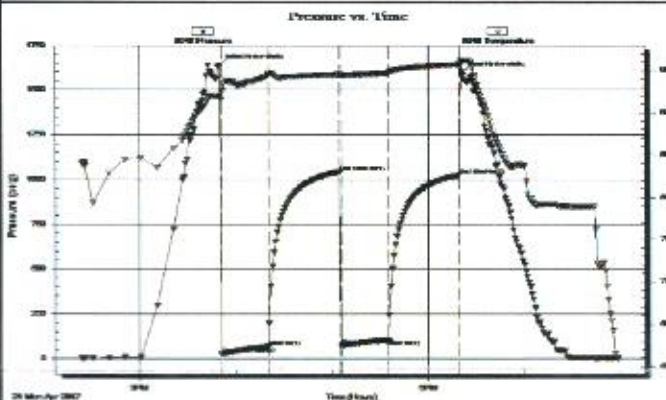
Start Time: 14:24:05

End Time: 19:59:59

Time On Btm: 2017.04.24 @ 15:49:30

Time Off Btm: 2017.04.24 @ 18:21:00

**TEST COMMENT:** I.F. 30 Minutes/ Blow built to BOB in 25 minutes  
L.S.L. 45 Minutes/ No blow back  
F.F. 30 Minutes/ Blow built to 10 1/2 inches  
F.S.L. 45 Minutes/ No blow back



**PRESSURE SUMMARY**

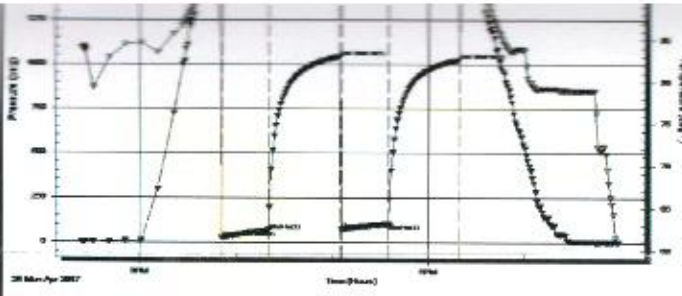
Time (Min.)	Pressure (psig)	Temp (deg F)	Annotation
0	1635.40	91.91	Initial Hydro-static
1	26.85	91.50	Open To Flow (1)
31	68.68	94.46	Shut-in(1)
75	1044.51	94.50	End Shut-In(1)
76	76.51	94.31	Open To Flow (2)
106	105.82	94.69	Shut-in(2)
150	1025.16	95.68	End Shut-In(2)
152	1598.85	96.04	Final Hydro-static

**Recovery**

Length (ft)	Description	Volume (bbl)
124.00	Dirty Mud/ Oil 40% Mud 60%	1.74
97.00	Clean Oil 100%	1.36

**Gas Rates**

	Choke (inches)	Pressure (psig)	Gas Rate (Mcf/D)



31	68.68	94.46	Shut-in(1)
75	1044.51	94.50	End Shut-in(1)
76	76.51	94.31	Open To Flow (2)
106	105.82	94.69	Shut-in(2)
150	1025.16	95.68	End Shut-in(2)
152	1598.85	96.04	Final Hydro-static

**Recovery**

Length (ft)	Description	Volume (bbl)
124.00	Dirty Mud/Oil 40% Mud 60%	1.74
97.00	Clean Oil 100%	1.36

**Gas Rates**

Choke (inches)	Pressure (psig)	Gas Rate (Mc/d)

Trilobite Testing, Inc

Ref. No: 64776

Printed: 2017.04.24 @ 20:37:03

**ROCK TYPES**

	Cht		Lmst fw7>		Carbon Sh		Arg/Shale
	Cht vari		shale, grn		Shbck		Ss
	Dolprim		shale, gry		shale, red		

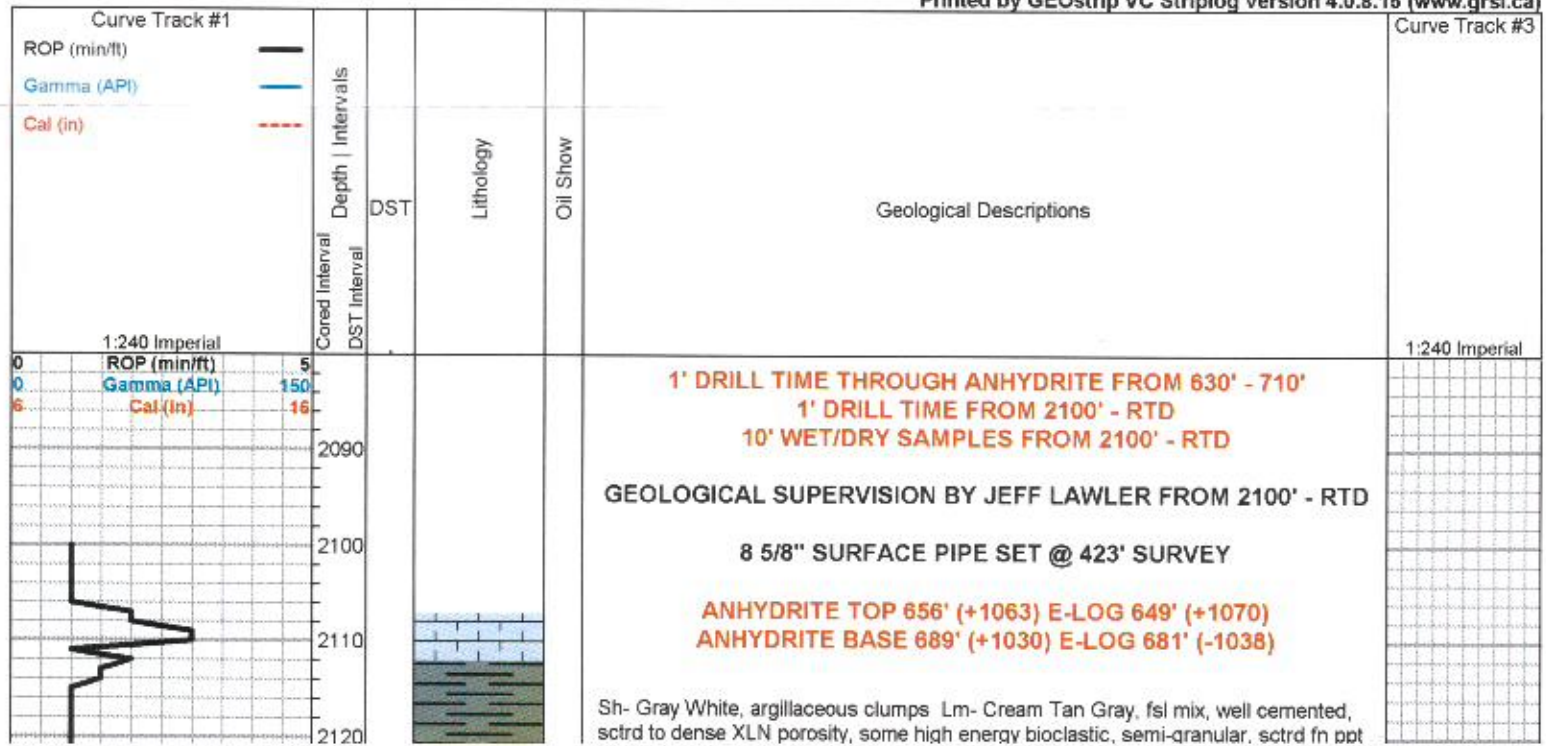
**ACCESSORIES**

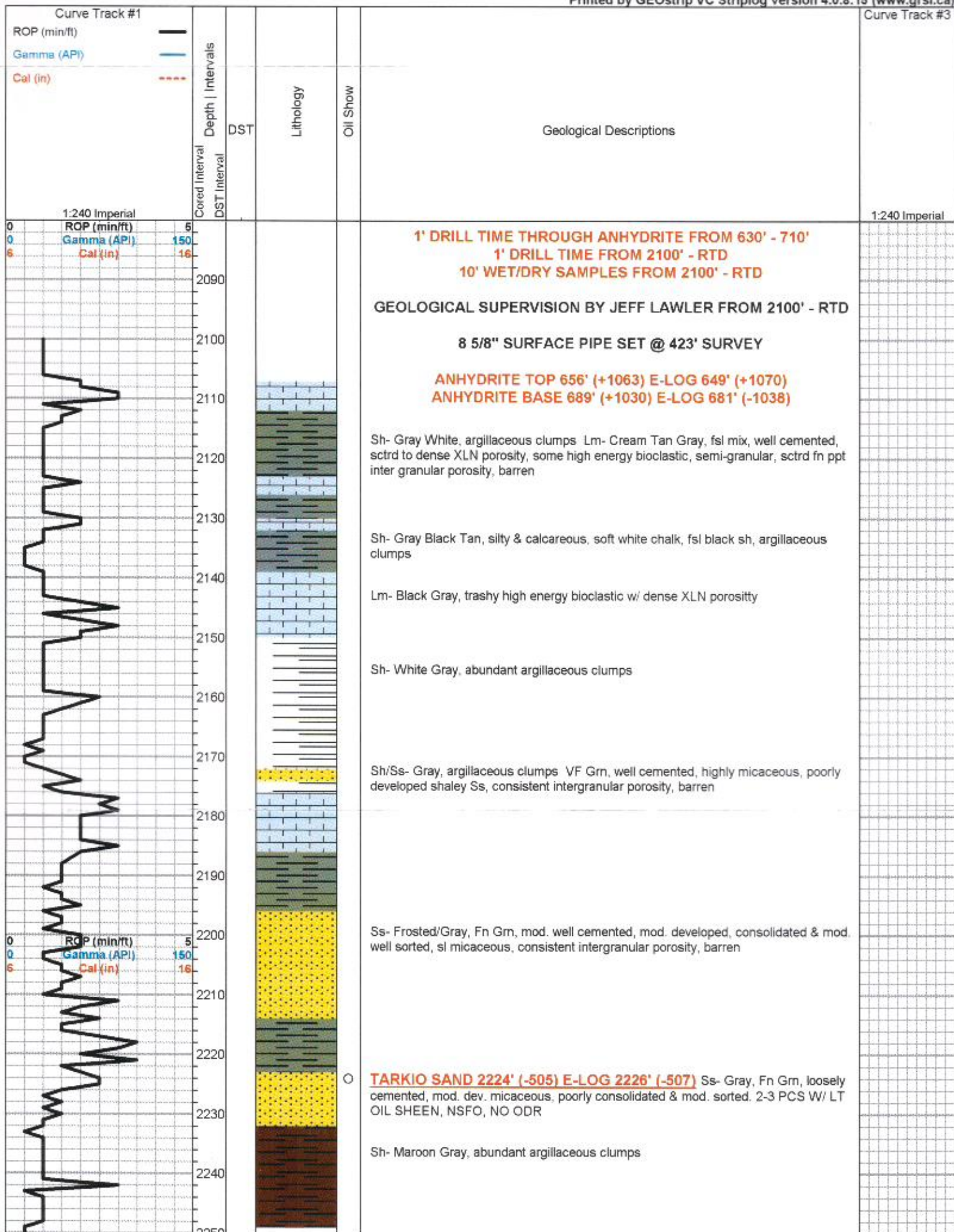
**STRINGER**  
 Sandstone

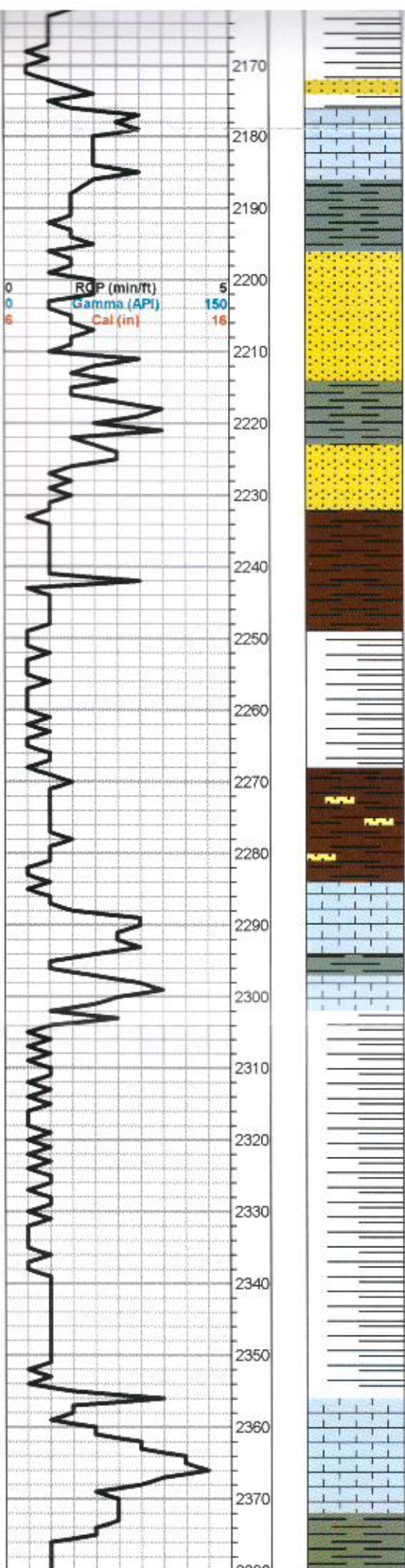
**OTHER SYMBOLS**

**DST**  
 DST Int  
 DST alt

Printed by GEOstrip VC Striplog version 4.0.8.15 (www.grsi.ca)







Sh/Ss- Gray, argillaceous clumps VF Grn, well cemented, highly micaceous, poorly developed shaley Ss, consistent intergranular porosity, barren

Ss- Frosted/Gray, Fn Grn, mod. well cemented, mod. developed, consolidated & mod. well sorted, sl micaceous, consistent intergranular porosity, barren

○ **TARKIO SAND 2224' (-505) E-LOG 2226' (-507)** Ss- Gray, Fn Grn, loosely cemented, mod. dev. micaceous, poorly consolidated & mod. sorted. 2-3 PCS W/ LT OIL SHEEN, NSFO, NO ODR

Sh- Maroon Gray, abundant argillaceous clumps

Sh- Gray, abundant argillaceous clumps

Sh/Ss- Lt Gray, silty & calcareous Ss- Fn Grn, loosely cemented, micaceous, loosely cemented, consolidated & well sorted, barren, sl shaley

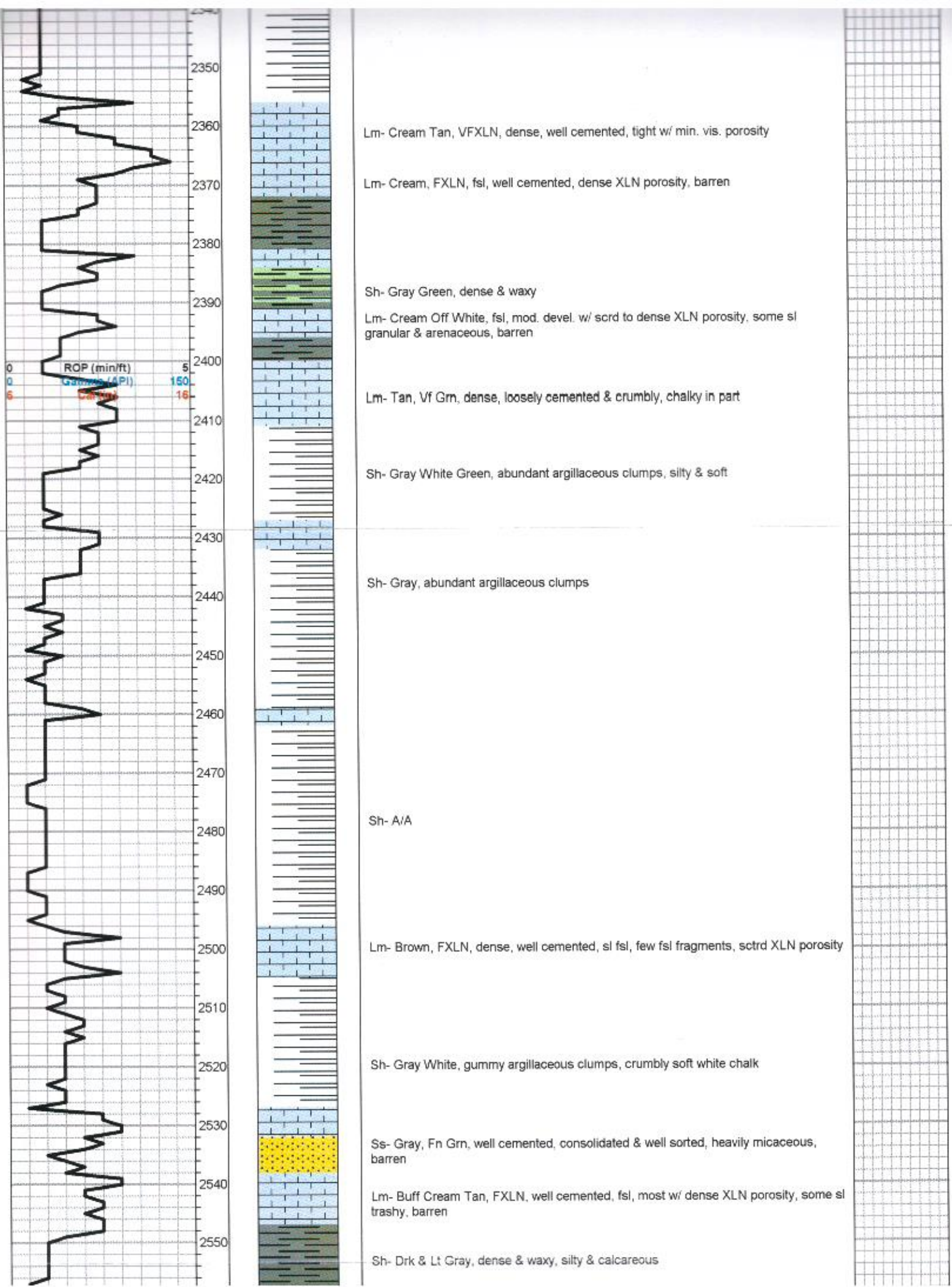
**TARKIO LM 2285' (-566) E-LOG 2285' (-566)** Lm- Buff Cream, mix of trashy bioclastics w/ fsl fragments, & sl fsl, well cemented, mod. dev. w/ scrd XLN porosity, all clean & barren

Sh- Gray White, argillaceous clumps, silty & calcareous

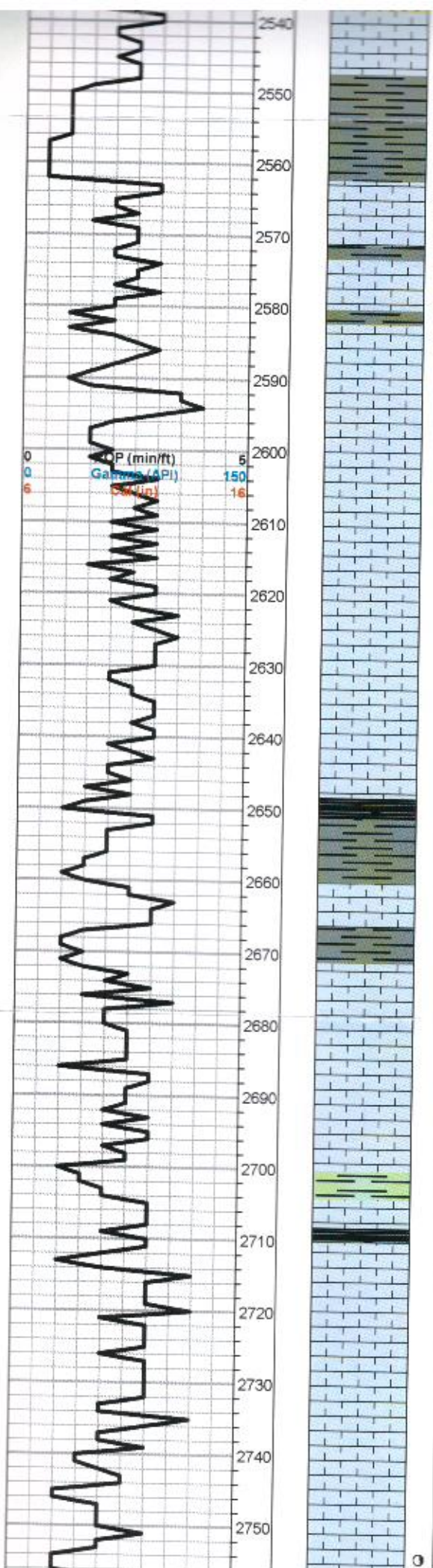
Sh- A/A

Lm- Cream Tan, VFXLN, dense, well cemented, tight w/ min. vis. porosity

Lm- Cream, FXLN, fsl, well cemented, dense XLN porosity, barren







Lm- Buff Cream Tan, FXLN, well cemented, fsl, most w/ dense XLN porosity, some sl trashy, barren

Sh- Drk & Lt Gray, dense & waxy, silty & calcareous

**TOPEKA 2562' (-843) E-LOG 2561' (-842)** Lm- Cream Tan, FXLN, sl fsl, well cemented, poorly dev. w/ sctrd XLN porosity

Lm- Buff, VFXLN, dense, well cemented & tight w/ min. vis. porosity

Lm/Chert- Tan Cream, VFXLN, dense, well cemented cherty Lm & fresh bedded chert, porcelain like, sharp

Lm- Cream Off White, VF-FXLN, dense, well cemented, mostly tight w/ poor vis. porosity

Lm- Cream, Vf Gm, loosely cemented, chalky mud supported matrix, sl mottled

Lm- Cream, FXLN, sl fsl, massive, well cemented, dense XLN porosity

Lm- Cream Buff, FXLN, sl fsl, mod. cemented, heavily mottled, sctrd XLN porosity

Sh- Black Gray, fissile & carbonaceous, dense & waxy, soft & silty

Lm- Cream, FXLN, gritty dolomitic Ls w/ consistent micro XLN porosity, few pcs of cherty Ls w/o vis. porosity

Lm- Cream, VFXLN, dense, well cemented, tight w/ min. vis. porosity

Lm- Cream Off White, Vf Gm, loosely cemented, chalky mud supported matrix, vry min. vis. porosity, clean

Lm- A/A w/ much soft white chalk

Sh- Mint Green White, argillaceous clumps

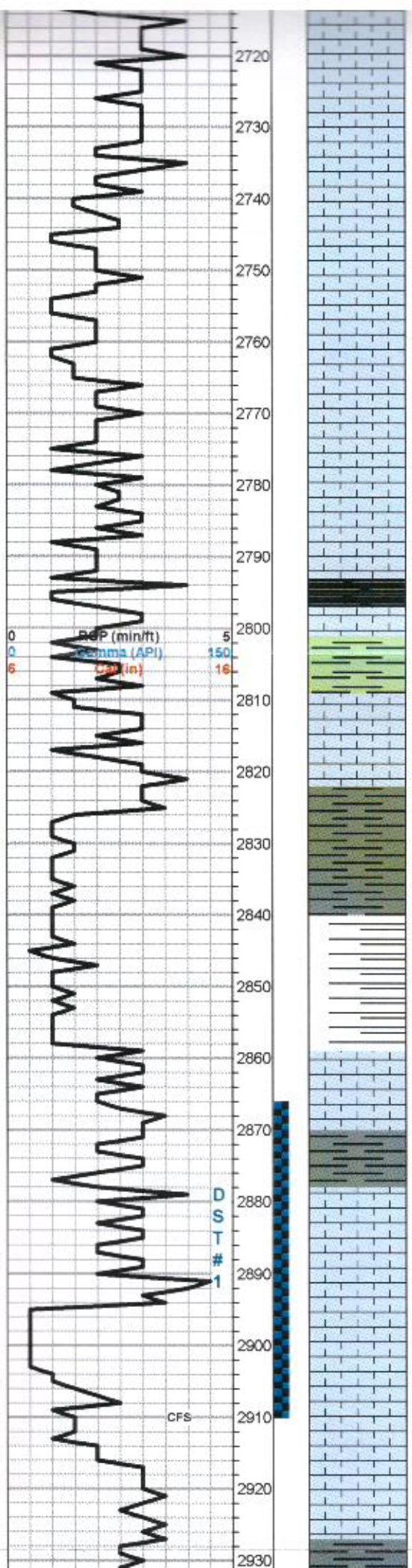
Sh- Black, fissile & carbonaceous

Lm- Cream Off White, FXLN, fsl w/ fusulinids, sctrd XLN porosity, clean & barren

Lm- Cream Tan, FXLN, sl fsl, sctrd XLN porosity, sctrd mottling, clean & barren

Lm- Cream Off White, FXLN, dense, well cemented, sl fsl, some chalky in part, sctrd XLN porosity, WK ODR?? NO SHOW FOUND

Lm- Cream Buff, FXLN, fsl, sctrd XLN & secondary reXLN porosity, barren 1-2 PCS



Lm- Cream Off White, FXLN, fsl w/ fusulinids, sctrd XLN porosity, clean & barren

Lm- Cream Tan, FXLN, sl fsl, sctrd XLN porosity, sctrd mottling, clean & barren

Lm- Cream Off White, FXLN, dense, well cemented, sl fsl, some chalky in part, sctrd XLN porosity, WK ODR?? NO SHOW FOUND

○ Lm- Cream Buff, FXLN, fsl, sctrd XLN & secondary reXLN porosity, barren 1-2 PCS W/ SCTRD DRK STN, TR FO, FR ODR

Lm- A/A, much soft white chalk & mud supported matrix

Lm- Cream Off White, VFXLN, dense, vry well cemented, tight w/ no vis. porosity, clean & barren

**HEEBNER 2792' (-1073) E-LOG 2791' (-1072)** Sh- Black, fissile & carbonaceous

Sh- Mint Green, argillaceous clumps

● **TORONTO 2811' (-1092) E-LOG 2809' (-1090)** Lm- Cream Tan, FXLN, mod. well dev. w/ consistent interXLN vry fn ppt porosity, SCTRD STN, NSFO, NO ODR

Sh- Gray Maroon, silty & soft, gritty & earthy

Sh- A/A w/ argillaceous clumps

○ **LKC 2858' (-1139) E-LOG 2857' (-1138)** Lm- Cream Off White, FXLN, dense, loosely cemented, consistent micro XLN porosity, LT SCTRD STN, NSFO, MOD, ODR

○ Lm- Cream Off White, FXLN, fsl & oolitic, TR oomoldic, loosely cemented w/ dense XLN porosity, LT SCTRD STN, SL FLAKEY, NSFO, WK ODR

● Lm- Cream Off White, FXLN, oomoldic w/ complete skeletal dissolution, sctrd XLN & intermoldic fn ppt porosity, DRK SCTRD STN, TR GSY FO UPON CRUSH, GD ODR

Lm- Off White, VFXLN, dense, well cemented & tight w/ sctrd XLN porosity, much soft white chalk, vry clean & barren

Sh- Gray Maroon White, silty & soft w/ various argillaceous clumps

SHORT TRIP  
SURVEY 3/4 dgr  
STRAP -0.29'

DST #1 LKC B-C  
2866' - 2910'  
30-45-30-60

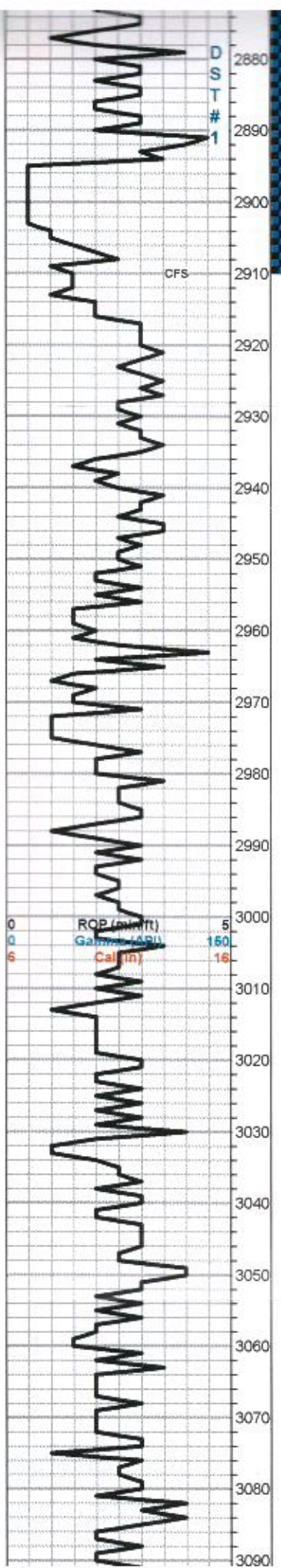
120' MW w/ OS  
(80% M, 20% W)

CHLOR: 25K

FFP: 27-55#  
FFP: 60-83#  
SIP: 566-560#

DST # 1

CFS



● Lm- Cream Off White, FXLN, fsl & oolitic, TR oomoldic, loosely cemented w/ dense XLN porosity, LT SCTRDR STN, SL FLAKEY, NSFO, WK ODR

● Lm- Cream Off White, FXLN, oomoldic w/ complete skeletal dissolution, sctrd XLN & intermoldic fn ppt porosity, DRK SCTRDR STN, TR GSY FO UPON CRUSH, GD ODR

Lm- Off White, VFXLN, dense, well cemented & tight w/ sctrd XLN porosity, much soft white chalk, vry clean & barren

Sh- Gray Maroon White, silty & soft w/ various argillaceous clumps

Lm- Cream Off White, mix of crumbly mud supported matrix & cream sl fsl, loosely cemented, massive, poor vis. porosity, barren

Lm- Brown, FXLN, fsl & oolitic, poorly dev. w/ sctrd XLN porosity, barren

Lm- Tan/Brown, VFXLN, dense, vry well cemented, densely packed small oolites, no vis. porosity, cherty Ls

Lm- Off White, Vf Grn, loosely cemented, sl fsl mud supported matrix, much soft white chalk, vry clean

Lm- Cream Off White, sl fsl & sl oolitic, poorly dev. w/ sctrd XLN porosity

Lm- Lt Gray, Vf Grn, loosely cemented mud supported matrix

Sh- Black Gray Maroon, fissile & carbonaceous, argillaceous clumps, gritty & earthy

Lm- Cream Off White, VF-FXLN, sl fsl, poorly dev., mostly tight w/ poor vis. porosity, barren

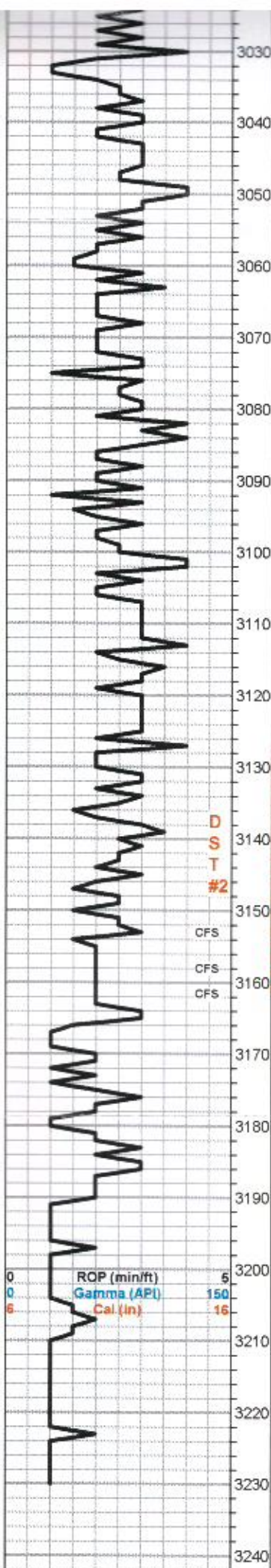
Lm- Buff Cream, VFXLN, dense, well cemented, tight w/ min. vis. porosity

Sh- Gray, waxy thin slivers

Lm- Cream Off White, mix of chalky mud supported matrix, fsl & sl oolitic, several pcs of cream sl dolomitic Ls w/ micro XLN porosity, all clean & barren

Lm- Cream, FXLN, sl fsl, sl cherty Ls, sctrd XLN porosity, much soft white chalk

Sh- Black Gray, fissile & carbonaceous, abundant argillaceous clumps



barren

Lm- Buff Cream, VFXLN, dense, well cemented, tight w/ min. vis. porosity

Sh- Gray, waxy thin slivers

Lm- Cream Off White, mix of chalky mud supported matrix, fsl & sl oolitic, several pcs of cream sl dolomitic Ls w/ micro XLN porosity, all clean & barren

Lm- Cream, FXLN, sl fsl, sl cherty Ls, sctrd XLN porosity, much soft white chalk

Sh- Black Gray, fissile & carbonaceous, abundant argillaceous clumps

Lm- Cream Tan, FXLN, dense, well cemented, sctrd XLN porosity, some soft white chalk

Sh- Gray White Mustard Yellow, argillaceous clumps

Lm- Cream Tan, FXLN, fsl, sctrd XLN porosity, barren

**BKC 3135' (-1416) E-LOG 3132' (-1413)** Sh- Black Gray, dense & waxy, soft & silty

Lm- Buff, FXLN, sl fsl, tight w/ min. vis. porosity, several pcs of fresh bedded various colored chert

Chert- Salmon Milky White, sharp fresh bedded & conglomerate arenaceous dolomitic chert, 2 pcs of bone white sl dolomitic arenaceous Lm, highly effervescent

**ARBUCKLE 3154' (-1435) E-LOG 3146' (-1427)** Dolomite- Bone White, Med-Crs XLN, sucrosic & rhombic, well dev., friable, several pcs w/ sud-rounded med grn qtz. inclusions, LT SCTRD STN, FR SFO, WK ODR

**3161'**- Dol- Tan, VF-FXLN, dense, well cemented, mostly tight w/ micro XLN porosity, barren

Dol- White, Med-Crs XLN, well dev. rhombic w/ consistent interXLN ppt porosity, SCTRD DRK STN, FR SFO, FO ODR

Dol- White Cream, F-Med XLN, mod. dev. w/ sctrd fn ppt & interXLN porosity, some dense w/ min. vis. porosity, several w/ sub-rounded fn-med qtz. inclusions, barren

Dol- Cream Lt Pink, Med-Crs XLN, well dev., sl rhombic, clear crs qtz. inclusions & clear sandy dolomite, loosely to well cemented, barren

Dol- Cream, FXLN, mod. dev. clear sandy dolomite, vry fn ppt interXLN porosity, barren

Dol- A/A

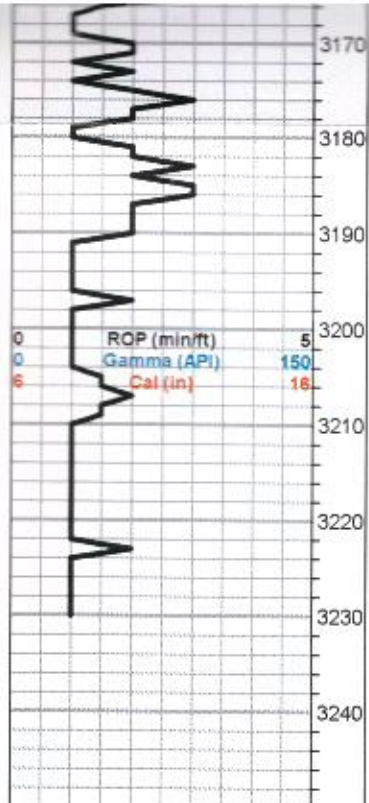
10 STAND TRIP  
CTCH 1 HR.

DST #2  
ARBUCKLE  
3128' - 3161'  
30-45-30-45

221' TOTAL FLUID  
124' MDY OIL  
(40% O, 60% M)  
97' CLN OIL  
Gr: 32

1FP: 26-68#  
FFP: 76-105#  
SIP: 1044-1025#

**RTD 3230' (-1511) LTD 3260' (-1511) @ 12:57 4/25/2017**



barren

Dol- White, Med-Crs XLN, well dev. rhombic w/ consistent interXLN ppt porosity, SCTRDRK STN, FR SFO, FO ODR

Dol- White Cream, F-Med XLN, mod. dev. w/ sctrdr fn ppt & interXLN porosity, some dense w/ min. vis. porosity, several w/ sub-rounded fn-med Qtz. inclusions, barren

Dol- Cream Lt Pink, Med-Crs XLN, well dev., sl rhombic, clear crs Qtz. inclusions & clear sandy dolomite, loosely to well cemented, barren

Dol- Cream, FXLN, mod. dev. clear sandy dolomite, vry fn ppt interXLN porosity, barren

Dol- A/A

**RTD 3230' (-1511) LTD 3260' (-1511) @ 12:57 4/25/2017**