

AUSTIN B. KLAUS



Cell 785.650.3629
Work 785.483.3145
Ext 225

PO BOX 352
Russell, KS 67665
austin.klaus@johnofarmer.com

Scale 1:240 (5"=100') Imperial
Measured Depth Log

Well Name: Conner Unit #1
Location: Graham County
License Number: API #15-065-24,095-0000
Spud Date: 2/18/15
Surface Coordinates: Section 2, Township 9 South, Range 22 West
960' FSL & 1,400' FWL
Bottom Hole Coordinates: Vertical well with minimal deviation, same as above
Ground Elevation (ft): 2,200' **K.B. Elevation (ft):** 2,205'
Logged Interval (ft): 3,150' **To:** RTD **Total Depth (ft):** 3,850'
Formation: LKC, Arbuckle
Type of Drilling Fluid: Chemical (Mud Co.)

Region: Kansas
Drilling Completed: 2/22/15

Printed by STRIP.LOG from WellSight Systems 1-800-447-1534 www.WellSight.com

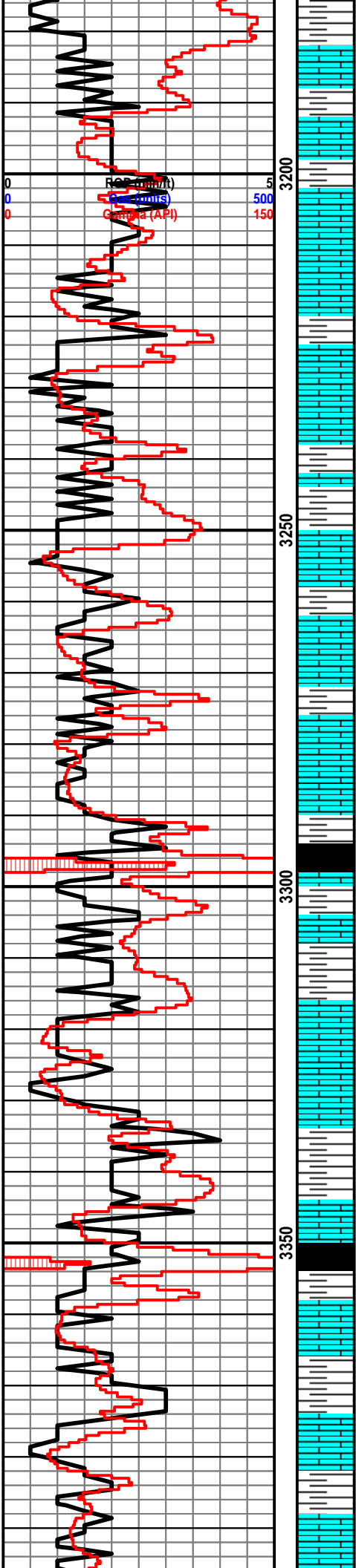
OPERATOR

Company: John O. Farmer, Inc.
Address: 370 W. Wichita Ave.
Russell, KS 67665

Comments

The Conner Unit #1 well was drilled by WW Rig #6 (Tool Pusher: Mark Biggie).

The location for the Conner Unit #1 well was found via 3-D seismic survey. Geologic samples were collected and evaluated from 3,150'-3,850'. Structurally, the Conner Unit #1 ran 11' low, at the Arbuckle, to the Conner #1, 820' to the east-southeast. Upon completion of the logging operation a straddle test was conducted over the top 20' of the Arbuckle, yielding positive fluid recovery and good shut-in pressures. Upon completion of the drill stem test, the decision was made to run 5 1/2" production casing to further evaluate the Conner Unit #1 well on 2/23/15.



Sh: gry-drk gry

Topeka 3190' (-985)

Ls: off wh-tan-gry, fn xln, scat chalky, NSFO

Ls: tan-lt gry, fn-md xln, mostly DNS, NSFO, chalky

Sh: drk gry-brn, soft

Ls: tan-gry, fn xln, mottled, scat chert-off wh, NSFO

Sh: drk brn-gry

Ls: off wh-gry, fn xln, fossil, scat int fossil porosity, NSFO, scat chert-off wh

Ls: ala

Sh: lt gry-drk gry

Ls: tan-crm, fn xln, scat fossil, NSFO, scat cher-off wh-gry

Sh: drk gry-blk

Sh: ala

Ls: tan-crm, fn xln, scat chalky, NSFO, sl chalky

Ls: ala

Sh: lt gry-drk gry

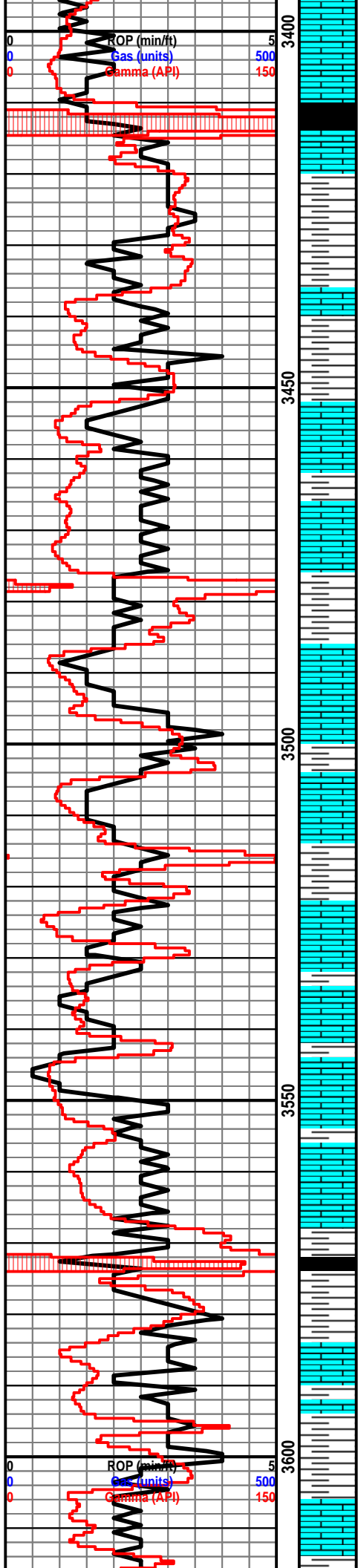
Sh: blk, carb, fissile

Ls: tan-brn, fn xln, fossil, scat fossil porosity, NSFO

Sh: lt gry-drk gry

Ls: tan-brn, fn-md xln, mostly DNS, NSFO, scat chert-off wh-gry

Sh: gry



Ls: tan-lt gry, fn xln, mostly DNS

Heebner 3409' (-1204)

Sh: blk, carb, fissile

Ls: tan-lt gry, fn xln, DNS

Sh: lt gry-drk gry

Toronto 3434' (-1229)

Ls: off wh-tan, fn xln, ool, scat fossil, fair oom porosity, NSFO

Sh: drk gry

Lansing 3450' (-1245)

Ls: off wh-tan, fn xln, ool, fair oom porosity, scat-fair oil st, NSFO, no odor

Sh: drk gry-brn, scat sltst

Ls: tan-lt gry, fn-md xln, mostly DNS, NSFO

Sh: drk gry

Ls: off wh-tan, fn xln, fair int xln and vuggy porosity, fair oil st, VSSFO, sl-fair odor, scat chert-off wh

Sh: drk gry-brn-grn

Ls: off wh-lt brn, fn xln, scat fossil, vry poor int xln porosity, NSFO, chalky

Sh: drk gry-brn

Ls: tan-lt gry, fn-md xln, poor int xln porosity, NSFO, chert-off wh-gry

Ls: off wh-tan, fn xln, fair int xln & vuggy porosity, sl-fair oil st, VSSFO, sl odor, vry chalky

Ls: off wh-tan, fn xln, ool, fair oom porosity, NSFO, scat chalky

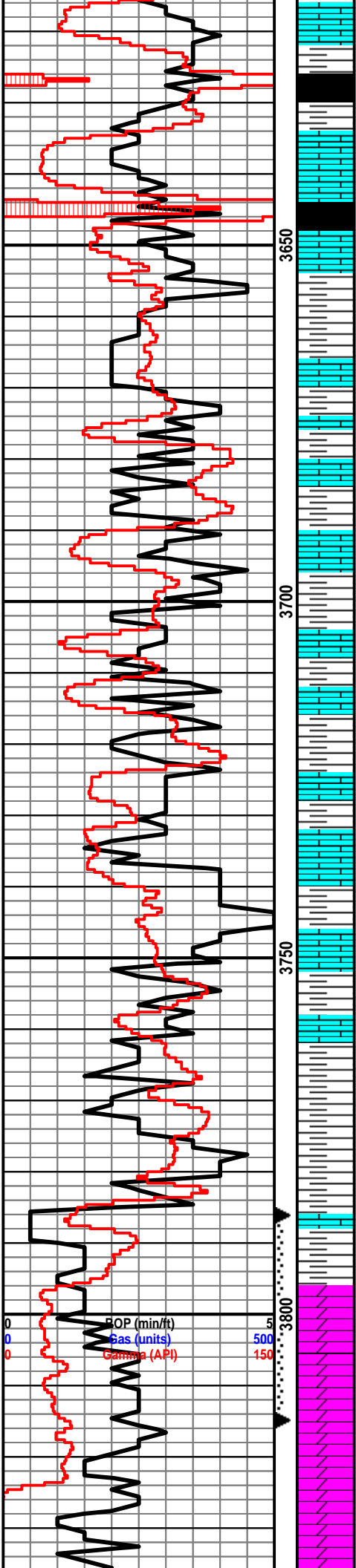
Ls: tan-lt gry, fn xln, poor int xln porosity, NSFO, scat chert-off wh-gry, chalky

Sh: blk, carb, fissile

Ls: tan-brn, fn xln, scat int xln porosity, scat chert-off wh-gry, chalky, NSFO

Sh: drk gry-brn

Ls: off wh-tan, fn xln, poor vuggy porosity, scat-fair oil st, VSSFO, sl odor, scat pyrite



Sh: drk gry

Ls: off wh-tan fn xln, mostly DNS, NSFO

Sh: drk gry-blk

Ls: off wh-tan, fn-md xln, scat ool, poor-fair ool porosity, fair-good oil sat, SSFO, fair odor

Sh: drk gry-blk

Ls: off wh-lt brn, fn xln, scat int xln porosity, scat oil st, NSFO, no odor, chalky, chert-off wh

B/KC 3657' (-1452)

Sh: drk gry-grn-brn

Sh: lt gry-drk gry-brn, vry soft

Sh: ala

Ls: off wh-crm, fn xln, vry DNS, NSFO

Sh: drk gry-brn

Ls: tan-lt gry, fn-md xln, mostly DNS, hvy chert-off wh-gry, NSFO

Ls: off wh-lt brn, fn-md xln, no visible porosity, NSFO, chalky, fossil

Ls: ala

Ls: tan-brn, fn xln, mostly DNS, NSFO

Sh: drk gry-grn

Sh: lt gry-drk brn-grn

Arbuckle 3784' (-1579)

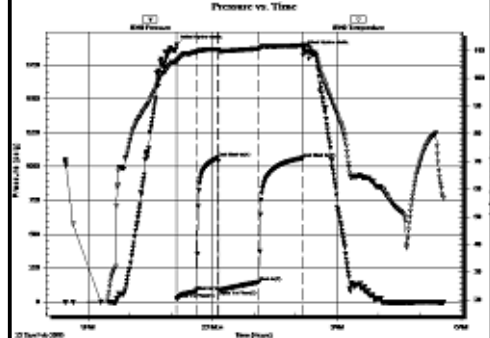
Dolo: off wh-lt tan, fn-md xln, fair-good int xln porosity, good oil sat, GSFO, good-strong odor, scat chert-off wh

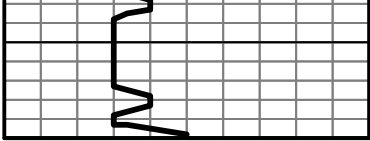
Dolo: off wh-tan, fn-md xln, fair-good sucrosic xln porosity, good oil sat, GSFO, good-strong odor, fair yel fluor

Dolo: off wh-tan, md-crs xln, fair-good int xln porosi, fair oil sat, FSFO, good odor

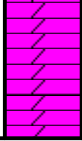
Dolo: off wh-tan, fn-md xln, fair int xln porosity, poor oil sat, NSFO, dead odor, scat chert off wh

DST #4 3,786'-3,815' (Top 20' Arbuckle)
 30"-30"-60"-60"
 IF: weak blow built to 7.5", surface blow back on shut in
 FF: weak blow built to 6", no blow back
 Rec: 355' Clean Gassy Oil (30% G, 70% O)(21 API), 62' HM&GCO (20%G, 40%M, 40%O)
 FP: 25-81, 90-149#
 SIP: 1,065-1,064#
 HP: 1,902-1,863#
 BHT:112





50



Dolo: ala