



TRILOBITE TESTING, INC

DRILL STEM TEST REPORT

Culbreath Oil & Gas Company Inc.

28-11s-32w Logan,KS

3501 S Yale Ave
Tulsa OK 74135

H Drieling Trust 1-28

ATTN: Steve Murphy

Job Ticket: 61449

DST#: 6

Test Start: 2015.08.05 @ 08:44:15

GENERAL INFORMATION:

Formation: **Johnson**

Deviated: No Whipstock: ft (KB)

Time Tool Opened: 10:31:15

Time Test Ended: 15:31:45

Test Type: Conventional Bottom Hole (Reset)

Tester: Mike Roberts

Unit No: 65

Interval: 4624.00 ft (KB) To 4670.00 ft (KB) (TVD)

Reference Elevations: 3078.00 ft (KB)

Total Depth: 4670.00 ft (KB) (TVD)

3073.00 ft (CF)

Hole Diameter: 7.88 inches Hole Condition: Fair

KB to GR/CF: 5.00 ft

Serial #: 8846 Inside

Press@RunDepth: 67.10 psig @ 4630.00 ft (KB)

Capacity: 8000.00 psig

Start Date: 2015.08.05

End Date:

2015.08.05

Last Calib.: 2015.08.05

Start Time: 08:44:15

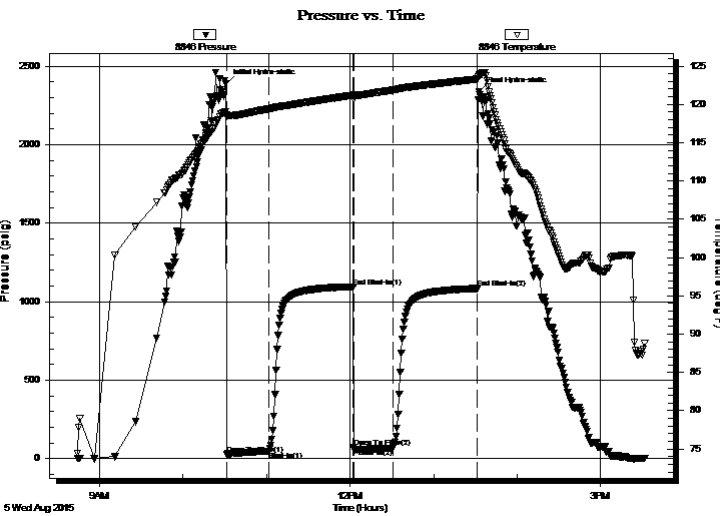
End Time:

15:31:45

Time On Btm: 2015.08.05 @ 10:31:00

Time Off Btm: 2015.08.05 @ 13:32:30

TEST COMMENT: IF: Built to 3" blow
IS: No return blow
FF: Built to 3" blow
FS: No return blow



PRESSURE SUMMARY

Time (Min.)	Pressure (psig)	Temp (deg F)	Annotation
0	2388.60	119.04	Initial Hydro-static
1	29.57	118.43	Open To Flow (1)
31	47.56	119.41	Shut-In(1)
92	1095.98	121.22	End Shut-In(1)
92	73.10	120.67	Open To Flow (2)
120	67.10	121.87	Shut-In(2)
181	1084.68	123.32	End Shut-In(2)
182	2338.85	123.72	Final Hydro-static

Recovery

Length (ft)	Description	Volume (bbl)
59.00	gcmo 2%g 40%m 58%o	0.29
126.00	gco 10%g 90%o	1.23

* Recovery from multiple tests

Gas Rates

Choke (inches)	Pressure (psig)	Gas Rate (MMcf/d)



**TRILOBITE
TESTING, INC**

DRILL STEM TEST REPORT

FLUID SUMMARY

Culbreath Oil & Gas Company Inc.

28-11s-32w Logan,KS

3501 S Yale Ave
Tulsa OK 74135

H DrielingTrust 1-28

Job Ticket: 61449

DST#: 6

ATTN: Steve Murphy

Test Start: 2015.08.05 @ 08:44:15

Mud and Cushion Information

Mud Type: Gel Chem

Cushion Type:

Oil API:

27 deg API

Mud Weight: 9.00 lb/gal

Cushion Length:

ft

Water Salinity:

0 ppm

Viscosity: 58.00 sec/qt

Cushion Volume:

bbbl

Water Loss: 8.78 in³

Gas Cushion Type:

Resistivity: 0.00 ohm.m

Gas Cushion Pressure:

psig

Salinity: 5000.00 ppm

Filter Cake: 1.00 inches

Recovery Information

Recovery Table

Length ft	Description	Volume bbbl
59.00	gcmo 2%g 40%m 58%o	0.290
126.00	gco 10%g 90%o	1.230

Total Length: 185.00 ft Total Volume: 1.520 bbl

Num Fluid Samples: 0

Num Gas Bombs: 0

Serial #:

Laboratory Name:

Laboratory Location:

Recovery Comments: API 23 @ 100* corrected to 27 @ 60*

Serial #: 8846

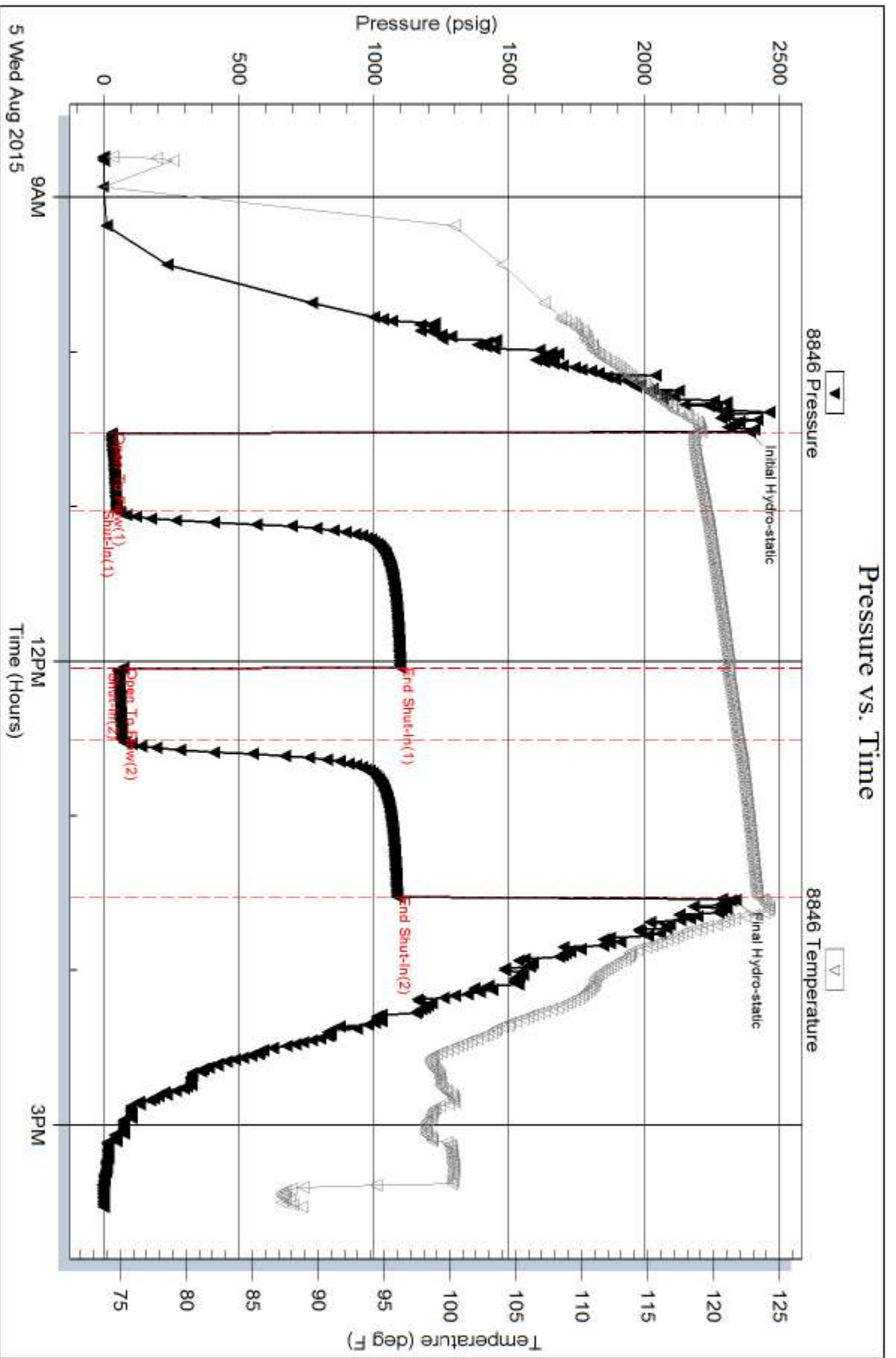
Inside

Culbreath Oil & Gas Company Inc.

H Drilling Trust 1-28

DST Test Number: 6

Pressure vs. Time



Triobite Testing, Inc

Ref. No: 61449

Printed: 2015.08.05 @ 15:59:47