

GEOLOGIC REPORT

DAVID J. GOLDAK

WICHITA, KANSAS
Scale 1:240 (5"=100') Imperial
Measured Depth Log

Well Name: Ellis-Wiechman Unit #1-13
Well Id:
Location: Section 13 - T17S - R33W
License Number: API: 15-171-21142
Spud Date: 07 / 24 / 2015
Surface Coordinates: 2450' FNL and 335' FWL
SE - SW - SW - NW
Region: Scott Co., KS
Drilling Completed: 07 / 31 / 2015
Bottom Hole Coordinates:
Ground Elevation (ft): 2991' K.B. Elevation (ft): 3004'
Logged Interval (ft): 3700' To: 4810' Total Depth (ft): 4810'
Formation: Mississippian - St Louis
Type of Drilling Fluid: Chemical - Mud-Co

Printed by WellSight Log Viewer from WellSight Systems 1-800-447-1534 www.WellSight.com

OPERATOR

Company: Stelbar Oil Corporation
Address: 1625 N. Waterfront Pkwy., Suite 200
Wichita, Kansas 67206-6602

GEOLOGIST

Name: David J. Goldak
Company: D. J. GOLDAK, INC.
Address: 155 N. Market, Suite 710
Wichita, Kansas 67202

General Info

CONTRACTOR: Sterling Drilling, Rig #5

BIT RECORD:

No.	Size	Make	Jets	Out	Feet	Hours
1	12-1/4	JZ-HAOTC	3-16s	315	315	2.00
2	7-7/8	JZ-HAIPG	3-18s	340	25	0.25
3	7-7/8	JZ-PLT516	5-15s	4440	4100	46.75
4	7-7/8	JZ-PLT516	5-15s	4489	49	3.25
5	7-7/8	Used JZ-PLT516 (Bit #3)		4810	321	11.50

SURVEYS: 315'-0.50

GENERAL DRILLING & PUMP INFORMATION:

Drilling with 14,000-17,000 lbs on bit and 90-100 RPM.
Drilling with 9 stands of collars (6.25"x2.25"): 535.92'
Pumping 60-66 S/M; 9.2-10.2 B/M; 900-1000 psi at standpipe.

Daily Status

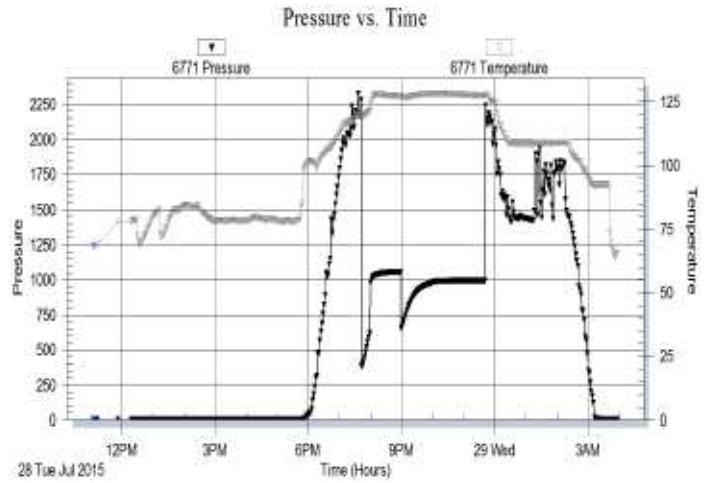
07/24/15 - Spud at 6:30 PM; Set 8-5/8" csg at 310'
 07/25/15 - 315' WOC; DP at 10:00 AM; Bit trip at 340'
 07/26/15 - 2,300' Drilling; Displace mud @ 3,478'
 07/27/15 - 3,780' Drilling; Wiper-trip @ 3,800'
 07/28/15 - 4,440' Prep. for DST #1
 07/29/15 - 4,440' CTCH after DST #1; Bit trip @ 4,489'
 07/30/15 - 4,693' TIH with DST #2
 07/31/15 - 4,810' Logging

DST #1: 4,393' - 4,440' (Marmaton)
 15" - 60" - 60" - 90"

IF: Strong blow building to BOB in 45 seconds
ISI: Blow back building to BOB in 8-1/2 minutes
FF: Strong blow - BOB immediately
 GTS in 26 min. - TSTM
FSI: Blow back building to BOB in 8 minutes

RECOVERY: 2,356' Total Fluid, consisting of:
 2,326' CGO (35% G, 65% O); Oil gravity: 28 API
 30' G&OCM (20% G, 35% O, 45% M)
 32 Bbls recovery was flowed to vac-truck
 Sampler: 1.3 CF Gas & 1150 ml Oil @ 730 psi

SIP: 1055-993; FP: 386-621, 653-975; HP: 2279-2239; BHT: 125

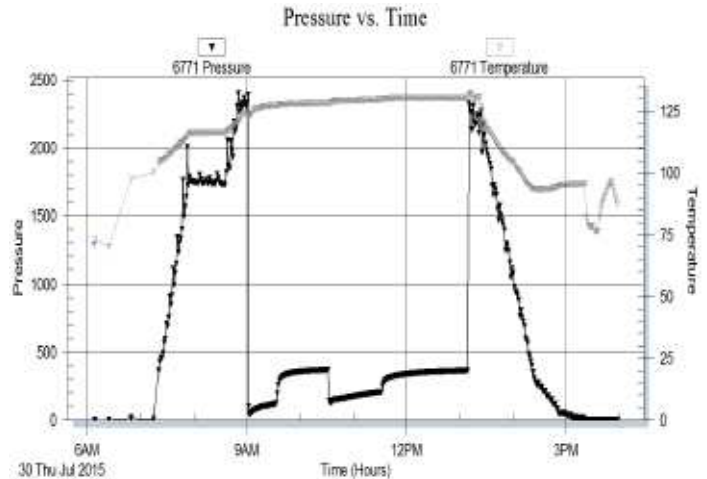


DST #2: 4,646' - 4,693' (Basal Penn Sand)
 30" - 60" - 60" - 90"

IF: Strong blow building to BOB in 9 minutes
ISI: Blow back building to 8 inches
FF: Strong blow building to BOB in 1 minute
 GTS in 53 min. - TSTM
FSI: Blow back building to BOB in 15 minutes

RECOVERY: 465' Total Fluid, consisting of:
 375' CGO (20% G, 80% O); Oil gravity: 27 API
 60' G&MCO (25% G, 55% O, 20% M)
 30' G&OCM (25% G, 30% O, 45% M)
 Sampler: 0.6 CF Gas, 1500 ml Oil & Tr Mud

SIP: 369-363; FP: 45-120, 128-202; HP: 2389-2328; BHT: 132



ROCK TYPES

	Anhy		Gyp		Shgy		Sandylms
	Bent		Igne		Slstt		Shale
	Brec		Lmst		Ss		Slstn
	Cht		Meta		Till		Shlyslts
	Clyst		Mrlst		Carb sh		Sltysh
	Coal		Salt		Dol		Lms
	Congl		Shale		Dtd		
	Dol		Shcol		Gry sh		

ACCESSORIES

MINERAL

- Anhy
- Arggrn
- Arg
- Bent
- Bit
- Brecfrag
- Calc
- Carb
- Chtdk
- Chtlt
- Dol
- Feldspar
- Ferrpel
- Ferr
- Glau
- Gyp
- Hvymin
- Kaol
- Marl
- Minxl
- Nodule
- Phos
- Pyr



- Salt
- Sandy
- Silt
- Sil
- Sulphur
- Tuff
- Chlorite
- Dol
- Sand
- Silty

FOSSIL

- Algae
- Amph
- Belm
- Bioclst
- Brach
- Bryozoa
- Cephal
- Coral
- Crin
- Echin
- Fish
- Foram



- Fossil
- Gastro
- Oolite
- Ostra
- Pelec
- Pellet
- Pisolite
- Plant
- Strom
- Fuss
- Oomold

STRINGER

- Anhy
- Arg
- Bent
- Coal
- Dol
- Gyp
- Ls
- Mrst
- Sltstrg
- Ssstrg
- Carbsh



- Clystn
- Dol
- Grysh
- Gryslt
- Lms
- Sandylms
- Sh
- Sltstn

TEXTURE

- Boundst
- Chalky
- Cryxln
- Earthy
- Finexln
- Grainst
- Lithogr
- Microxln
- Mudst
- Packst
- Wackest

OTHER SYMBOLS

POROSITY TYPE

- Earthy
- Fenest
- Fracture
- Inter
- Moldic
- Organic
- Pinpoint
- Vuggy

SORTING

- Well
- Moderate
- Poor

ROUNDING

- Rounded
- Subrnd
- Subang
- Angular

OIL SHOWS

- Even
- Spotted
- Ques
- Dead
- Gas show

INTERVALS

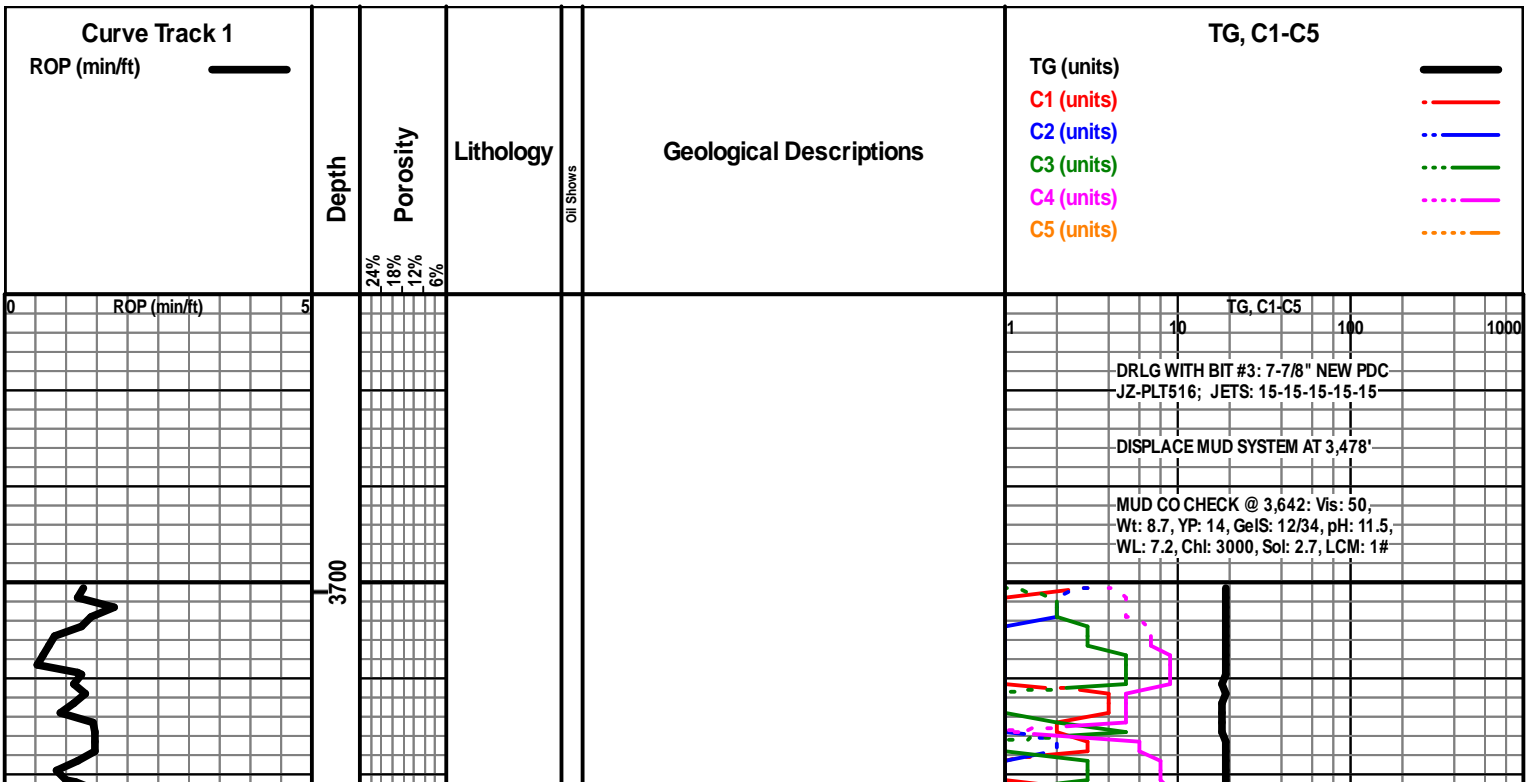
- Core
- Dst

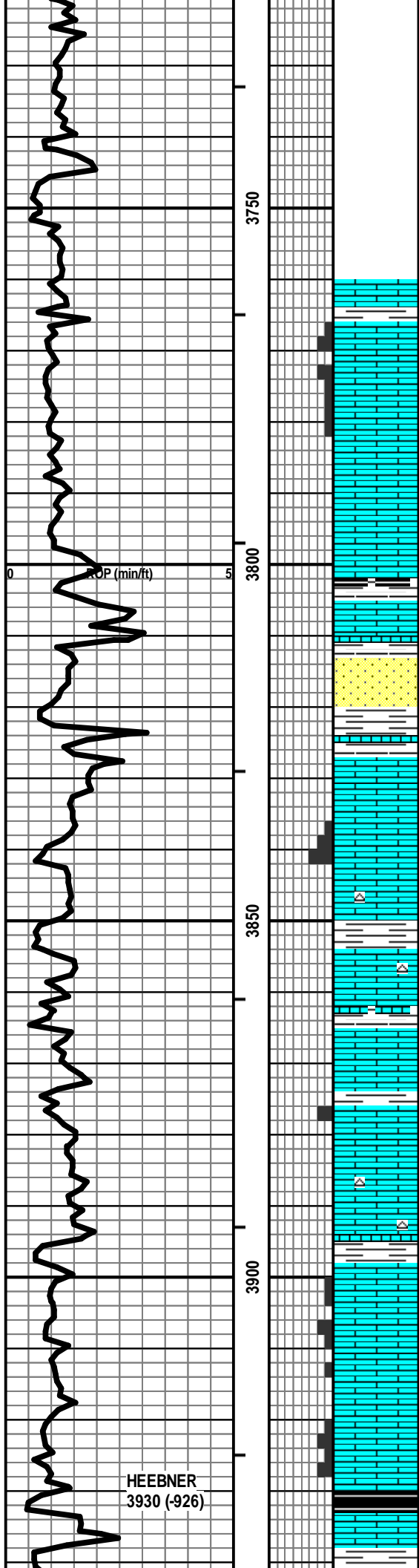


- Dst_1_t
- Dst_1_b
- Dst

EVENTS

- Rft
- Sidewall
- Conn





LS - CRM / GY / TAN, VF / F XLN, FOSS + OOL IN PT, P / SCAT F INTXLN + PPT POR IN PT, SCAT CHKY, NS

NO SAMPLES PRIOR TO WIPER-TRIP

LS - TAN / CRM, F / VF XLN, FOSS IN PT, PRED DNS, NS W/SS - LT / SCAT MED GY, VF / SLT QTZ GR, SR / R, SL MIC, TR CHL, F INTGR POR, NS W/SH - GY

LS - CRM / TAN, F XLN, OOL + FOSS, SCAT PINTXLN POR, PRED DNS, TR ASPH, NSFO, NO ODOR

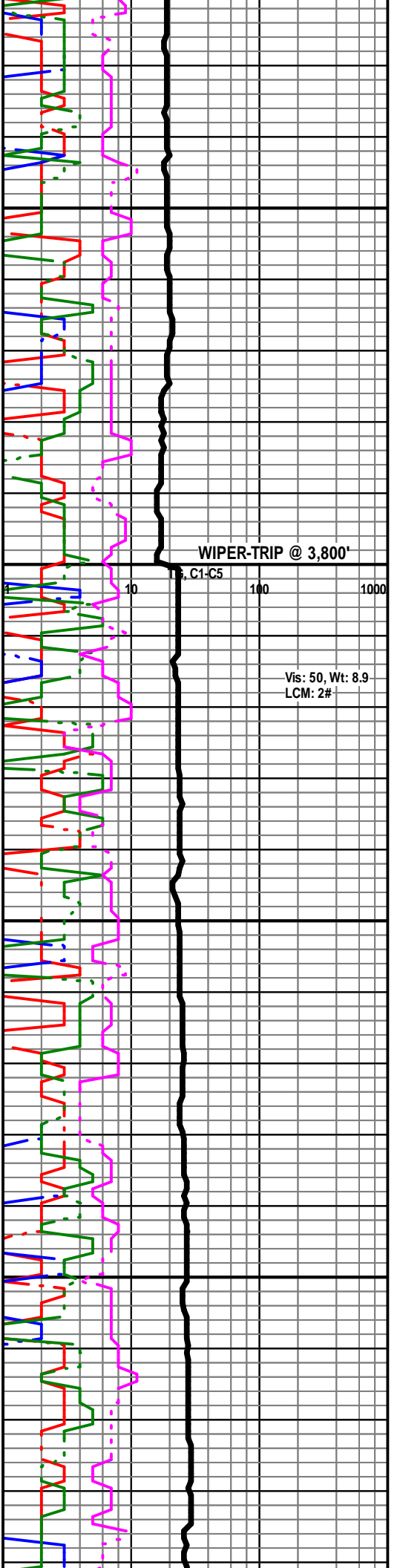
LS - CRM / TAN / WHT, F / VF XLN, OOL + FOSS IN PT, GRAN IN PT, SCAT P / F INTXLN + PPT POR, TR VUG POR, SCAT CHKY, NS, NO ODOR W/ SCAT CHT - TAN

LS - CRM / TAN, F / VF XLN, FOSS IN PT, GRAN IN PT, SCAT F PPT + INTXLN POR, TR P VUG POR, NS

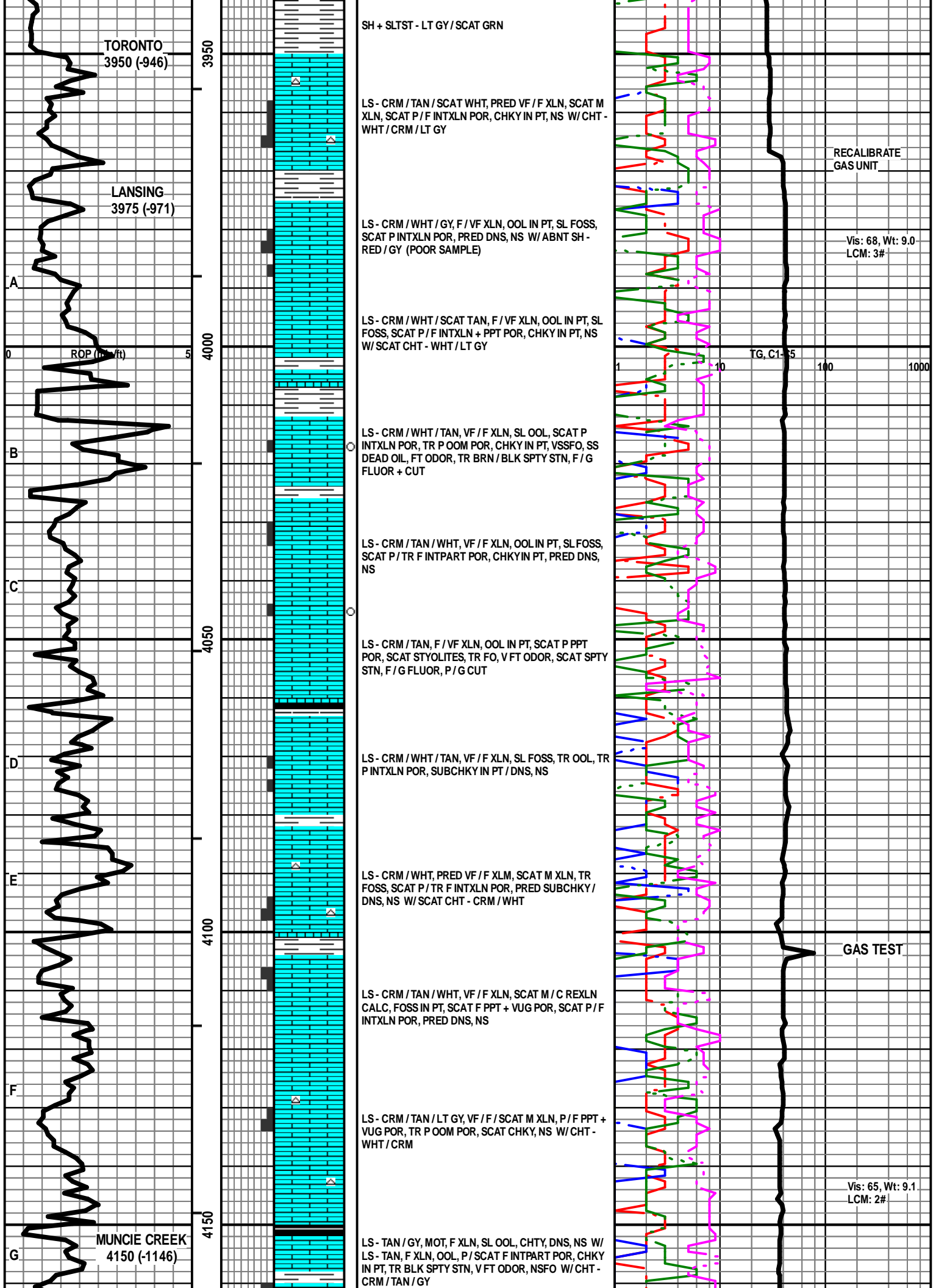
LS - CRM / TAN / GY, MOT IN PT, VF / F XLN, OOL + FOSS, PRED DNS / CHKY, NS W/ SCAT CHT - WHT / LT GY W/SH - GY

LS - TAN / CRM / GY, F XLN, FOSS IN PT, F / P INTXLN + PPT POR, CHKY IN PT, SCAT GILS, NSFO, NO ODOR

LS - AS ABOVE, P / G INTXLN + PPT POR, SCAT GILS, NSFO, NO ODOR W/SH - BLK, CARB W/LS - TAN, VF / F XLN, SL FOSS, DNS, NS



HEEBNER
3930 (-926)



TORONTO
3950 (-946)

LANSING
3975 (-971)

MUNCIE CREEK
4150 (-1146)

SH + SLTST - LT GY / SCAT GRN

LS - CRM / TAN / SCAT WHT, PRED VF / F XLN, SCAT M XLN, SCAT P / F INTXLN POR, CHKY IN PT, NS W/ CHT - WHT / CRM / LT GY

LS - CRM / WHT / GY, F / VF XLN, OOL IN PT, SL FOSS, SCAT P INTXLN POR, PRED DNS, NS W/ ABNT SH - RED / GY (POOR SAMPLE)

LS - CRM / WHT / SCAT TAN, F / VF XLN, OOL IN PT, SL FOSS, SCAT P / F INTXLN + PPT POR, CHKY IN PT, NS W/ SCAT CHT - WHT / LT GY

LS - CRM / WHT / TAN, VF / F XLN, SL OOL, SCAT P INTXLN POR, TR P OOM POR, CHKY IN PT, VSSFO, SS DEAD OIL, FT ODOR, TR BRN / BLK SPTY STN, F / G FLUOR + CUT

LS - CRM / TAN / WHT, VF / F XLN, OOL IN PT, SL FOSS, SCAT P / TR F INTPART POR, CHKY IN PT, PRED DNS, NS

LS - CRM / TAN, F / VF XLN, OOL IN PT, SCAT P PPT POR, SCAT STYOLITES, TR FO, V FT ODOR, SCAT SPTY STN, F / G FLUOR, P / G CUT

LS - CRM / WHT / TAN, VF / F XLN, SL FOSS, TR OOL, TR P INTXLN POR, SUBCHKY IN PT / DNS, NS

LS - CRM / WHT, PRED VF / F XLM, SCAT M XLN, TR FOSS, SCAT P / TR F INTXLN POR, PRED SUBCHKY / DNS, NS W/ SCAT CHT - CRM / WHT

LS - CRM / TAN / WHT, VF / F XLN, SCAT M / C REXLN CALC, FOSS IN PT, SCAT F PPT + VUG POR, SCAT P / F INTXLN POR, PRED DNS, NS

LS - CRM / TAN / LT GY, VF / F / SCAT M XLN, P / F PPT + VUG POR, TR P OOM POR, SCAT CHKY, NS W/ CHT - WHT / CRM

LS - TAN / GY, MOT, F XLN, SL OOL, CHTY, DNS, NS W/ LS - TAN, F XLN, OOL, P / SCAT F INTPART POR, CHKY IN PT, TR BLK SPTY STN, V FT ODOR, NSFO W/ CHT - CRM / TAN / GY

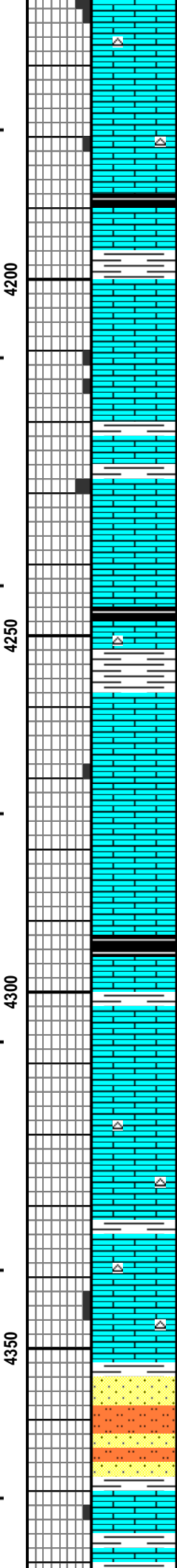
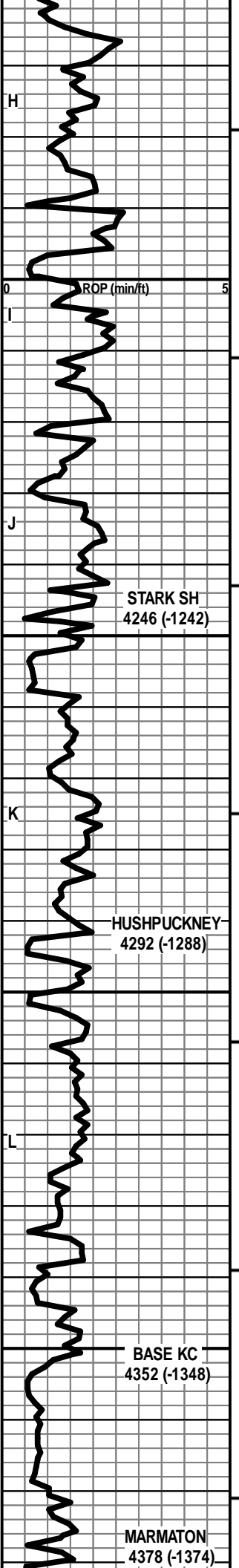
RECALIBRATE
GAS UNIT

Vis: 68, Wt: 9.0
LCM: 3#

TG, C1-5

GAS TEST

Vis: 65, Wt: 9.1
LCM: 2#



LS - CRM / TAN / SCAT GY, VF / F XLN, SCAT OOL + FOSS, TR P INTXLN POR, SCAT CHKY, PRED DNS, NS W/ SCAT CHT - AS ABOVE

LS - TAN / BRN, MOT IN PT, F XLN, SL FOSS, PRED DNS, NS

LS - TAN / CRM, F / VF XLN, FOSS IN PT, SCAT P / F PPT + INTXLN POR, TR VUG POR, SL / TR F SFO, F S ASPH, F ODOR, SCAT SPTY STN, F FLUOR, G CUT

LS - CRM / GY, VF / F XLN, OOL IN PT, SCAT P / F OOM POR, PRED DNS, NS

LS - TAN / CRM, VF / F XLN, TR FOSS, SUBCHKY / DNS, NS W/ SCAT CHT - TAN / BRN W/ SH - BLK / GY / GRN

LS - CRM / GY / TAN, VF / F XLN, SCAT OOL, SCAT P INTXLN POR, CHKY IN PT, PRED DNS, SCAT SPTY STN, NSFO

LS - ASABOVE, NS W/ SH - BLK, CARB

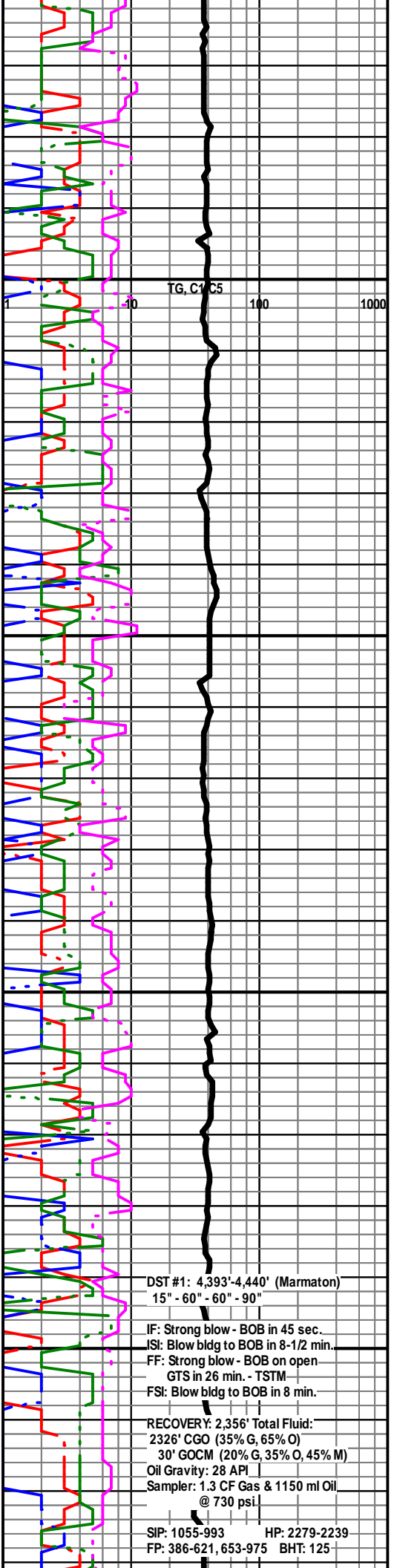
LS - GY / TAN, VF / F XLN, SL FOSS + OOL, SUBCHKY IN PT, PRED DNS, NS

LS - TAN / GY / SCAT BRN, VF / F XLN, SL OOL, PRED DNS, NS W/ SCAT CHT - WHT / LT GY

LS - CRM / TAN, VF / F XLN, SL OOL, SCAT PINTXLN POR, SUBCHKY IN PT / DNS, NS W/ SCAT CHT - WHT / LT GY

SLTST + SS - LT / MED GY, VF QTZ GR, MIC, P / F INTGR POR, NS W/ SH - GY / GRN

LS - TAN, F XLN, OOL + FOSS IN PT, FEW PCS P INTPART / INTXLN POR, VSSFO, NO ODOR, SCAT SPTY STN

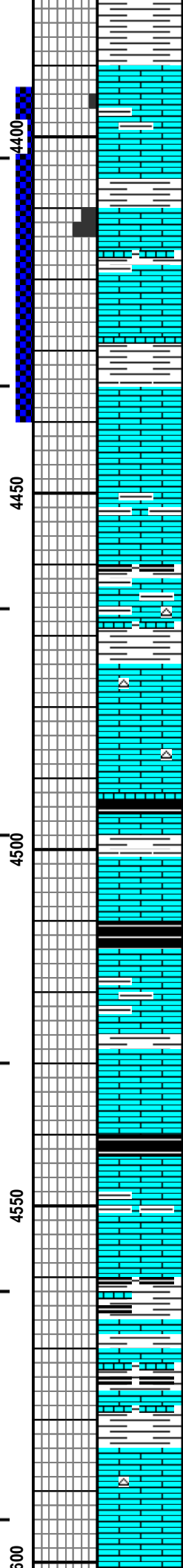
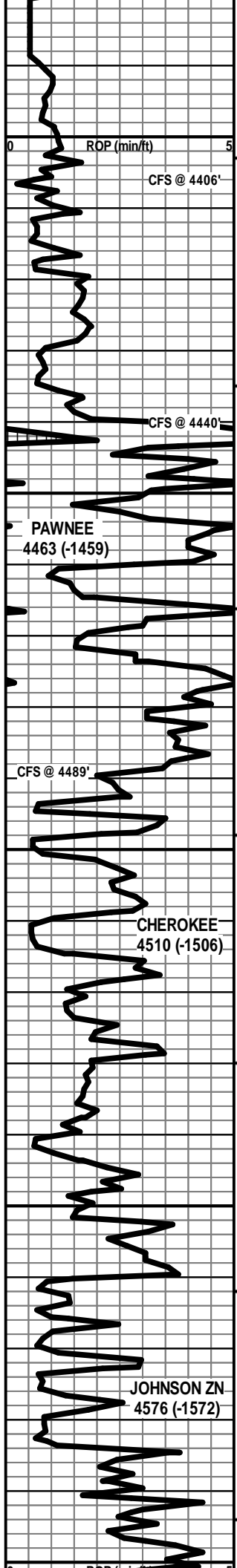


DST #1: 4,393'-4,440' (Marmaton)
15" - 60" - 60" - 90"

IF: Strong blow - BOB in 45 sec.
IS: Blow bldg to BOB in 8-1/2 min.
FF: Strong blow - BOB on open GTS in 26 min. - TSTM
FS: Blow bldg to BOB in 8 min.

RECOVERY: 2,356' Total Fluid:
2326' CGO (35% G, 65% O)
30' GOCM (20% G, 35% O, 45% M)
Oil Gravity: 28 API
Sampler: 1.3 CF Gas & 1150 ml Oil @ 730 psi

SIP: 1055-993 HP: 2279-2239
FP: 386-621, 653-975 BHT: 125



LS - TAN / CRM, VF / F XLN, SCAT FOSS, SCAT P INTXLN POR, PRED DNS, VSSFO, NO ODOR, SCAT SPTY STN (POSS CAVINGS)

LS - CRM / GY / SCAT TAN, F / M / C XLN, OOL IN PT, F / G INTXLN / INTPART + VUG POR IN PT, F / G SFO, FT ODOR, SAT / SPTY STN, G FLUOR + CUT

LS - CRM / TAN / GY, PRED F / VF XLN, TR M XLNAA, OOL IN PT, TR POR + SHOW AA, PRED DNS, NO ODOR W / SH - GY / GRN

LS - CRM / GY / TAN, VF / F XLN, OOL IN PT, PRED DNS, NS W / SH - GY / GRN

LS - TAN / GY / CRM, VF / F XLN, SL FOSS, TR OOL, PRED DNS, NS W / SH - GY

ABNT SH - BLK / GY W / LS - TAN / BRN / SCAT CRM, VF / F XLN, SCAT CRYPTO XLN, FOSS IN PT, PRED DNS, NS W / SCAT CHT - GY

LS - CRM / TAN, VF / F XLN, SCAT CRYPTO XLN, SL FOSS, SUBCHKY IN PT, PRED DNS, NS W / SCAT CHT - GY

LS - TAN / SCAT CRM, VF / F XLN, FOSS, CHKY IN PT, PRED DNS, NS W / SH - BLK CARB / GY

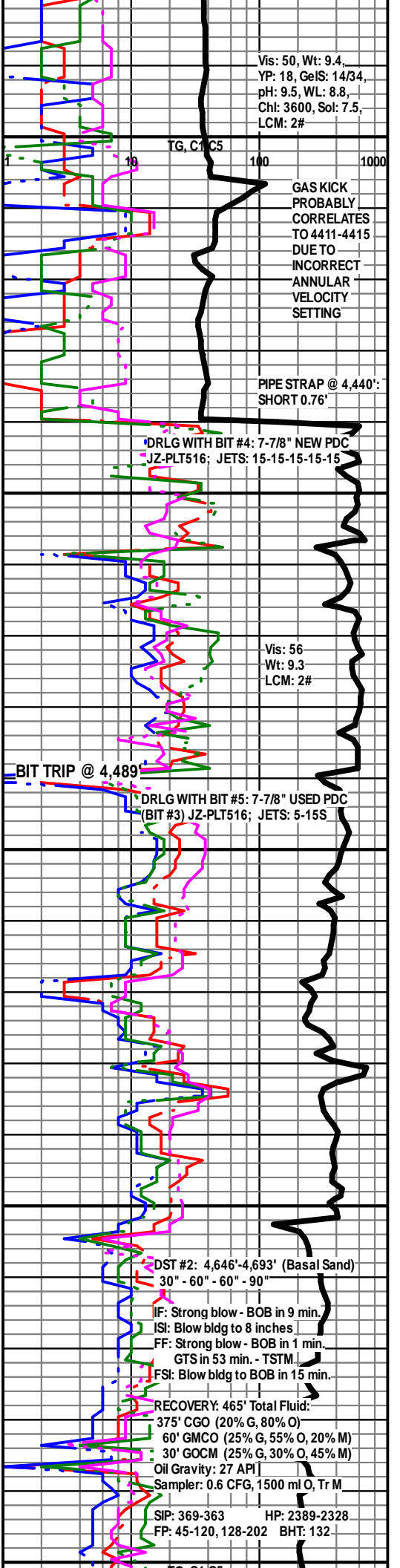
LS - GY / TAN, MOT IN PT, VF / F / SCAT M XLN, FOSS + OOL IN PT, SUBCHKY IN PT / DNS, NS W / SH - BLK CARB / GY

LS - TAN / GY, VF / SCAT F XLN, SCAT OOL, SUBCHKY / DNS, NS W / SH - BLK CARB / GY

LS - CRM / TAN, VF / F XLN, SL FOSS, CHKY IN PT, PRED DNS, NS

LS - TAN / CRM / GY, VF / F XLN, SL FOSS, SUBCHKY IN PT, PRED DNS, NS W / SH - GY / BLK

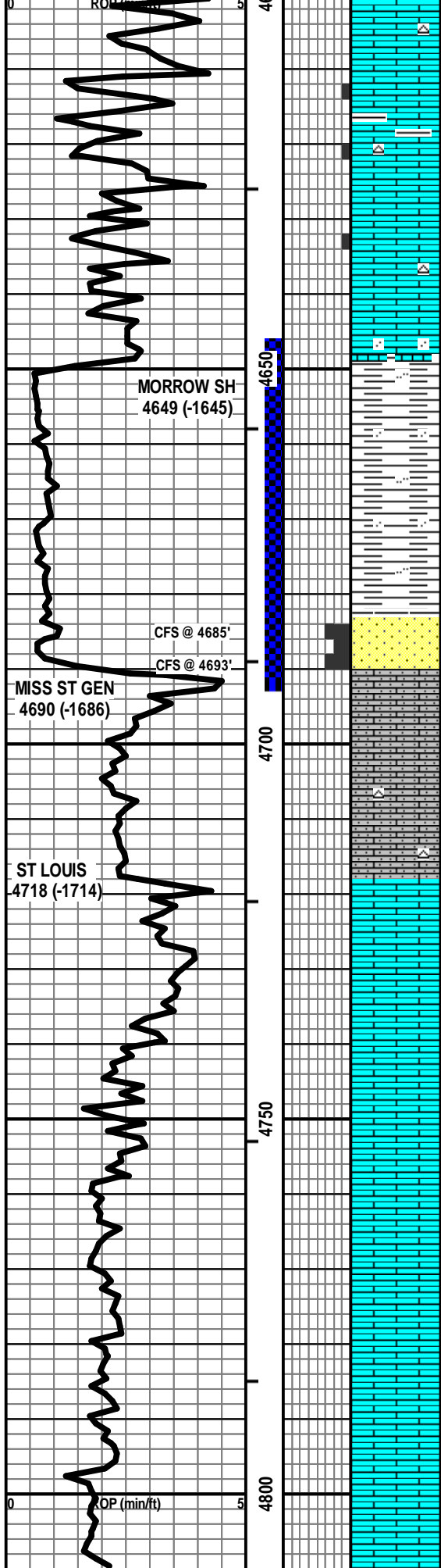
LS - TAN / BRN, PRED VF / F XLN, SCAT M XLN, SL FOSS + OOL, PRED DNS, TR SPTY DEAD STN, NSFO, NO ODOR W / SCAT CHT - TAN



PAWNEE
4463 (-1459)

CHEROKEE
4510 (-1506)

JOHNSON ZN
4576 (-1572)



LS - CRM / LT GY / TAN, F / VF XLN, FOSS IN PT, SL OOL, SCAT P INTXLN + PPT POR, SSFO, FT ODOR, SCAT SPTY STN, F / G FLUOR + CUT W/ SCAT CHT - TAN / GY

LS - CRM / TAN, VF / F XLN, SL FOSS, SCAT PINTXLN + PPT POR, SSFO, FT ODOR, SCAT SPTY STN, F / G FLUOR + CUT W/ SCAT CHT - GY

LS - TAN / BRN / CRM, F / VF XLN, SL FOSS, SCAT AREN, PRED DNS, NS

SH - MED / DK GY / GRN, SLTY IN PT W/ SCAT SS - GY / GRN, SLT / VF QTZ GR, W SRTD, SCAT GLAUC, NS

SCAT SS - LT GY, VF / F QTZ GR, W SRTD, SA / R, SIL CEM, SCAT CHL + GLAUC + PYR, F / G INTGR POR, FRI, TR SLTY, F / TR G SFO, FT ODOR, SPTY / SAT STN, G FLUOR + CUT

SS - ASABOVE, SCAT M QTZ GR, FW SRTD, F / G INTGR POR, PRED FRI, F / G SFO, FT ODOR, SAT / SPTY STN, G FLUOR + CUT W/ LS - WHT / CRM, VF XLN, AREN, VF QTZ GR, OOL IN PT, CHKY / DNS, NS

LS - WHT / CRM, VF XLN, AREN, VF QTZ GR, OOL IN PT, CHKY / DNS, NS W/ SCAT CHT - GY

LS - CRM / TAN, MOT IN PT, VF / F XLN, SCAT OOL, SUBCHKY / CHKY IN PT, PRED DNS, NS

LS - CRM / TAN, MOT IN PT, VF / F XLN, SCAT OOL, SUBCHKY / CHKY IN PT, PRED DNS, NS

LS - CRM / TAN, VF / F XLN, SUBCHKY IN PT, SCAT OOL, PRED DNS, NS

LS - CRM / TAN, VF / F XLN, SUBCHKY IN PT, OOL IN PT, PRED DNS, NS

LS - CRM / TAN, PRED VF / F XLN, SCAT CRYPTO XLN, OOL IN PT, CHKY IN PT, PRED DNS, NS

TOTAL DEPTH 4810 (-1806)

