

KANSAS CORPORATION COMMISSION
OIL & GAS CONSERVATION DIVISION

Form must be Typed
Form must be signed

TEMPORARY ABANDONMENT WELL APPLICATION

All blanks must be complete

OPERATOR: License#
Name:
Address 1:
Address 2:
City: State: Zip:
Contact Person:
Phone:
Contact Person Email:
Field Contact Person:
Field Contact Person Phone:

API No. 15-
Spot Description:
Sec. Twp. S. R.
GPS Location: Lat: Long:
Datum: NAD27 NAD83 WGS84
County: Elevation:
Lease Name: Well #:
Well Type: Oil Gas OG WSW Other:
SWD Permit #: ENHR Permit #:
Gas Storage Permit #:
Spud Date: Date Shut-In:

Table with 7 columns: Conductor, Surface, Production, Intermediate, Liner, Tubing. Rows include Size, Setting Depth, Amount of Cement, Top of Cement, Bottom of Cement.

Casing Fluid Level from Surface: How Determined? Date:
Casing Squeeze(s): to w / sacks of cement, to w / sacks of cement. Date:
Do you have a valid Oil & Gas Lease? Yes No
Depth and Type: Junk in Hole at Tools in Hole at Casing Leaks: Yes No Depth of casing leak(s):
Type Completion: ALT. I ALT. II Depth of: DV Tool: w / sacks of cement Port Collar: w / sack of cement
Packer Type: Size: Inch Set at: Feet
Total Depth: Plug Back Depth: Plug Back Method:

Geological Data:

Table with 4 columns: Formation Name, Formation Top, Formation Base, Completion Information. Rows 1 and 2.

UNDER PENALTY OF PERJURY I HEREBY ATTEST THAT THE INFORMATION CONTAINED HEREIN IS TRUE AND CORRECT TO THE BEST OF MY KNOWLEDGE

Submitted Electronically

Form with fields: Do NOT Write in This Space - KCC USE ONLY, Date Tested, Results, Date Plugged, Date Repaired, Date Put Back in Service, Review Completed by, Comments, TA Approved: Yes Denied, Date.

Mail to the Appropriate KCC Conservation Office:

Table with 3 columns: District Office (1-4), Address, Phone number.

Liquid Level

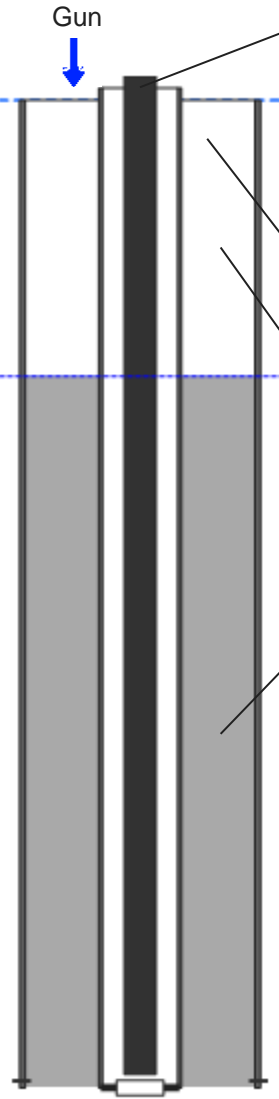
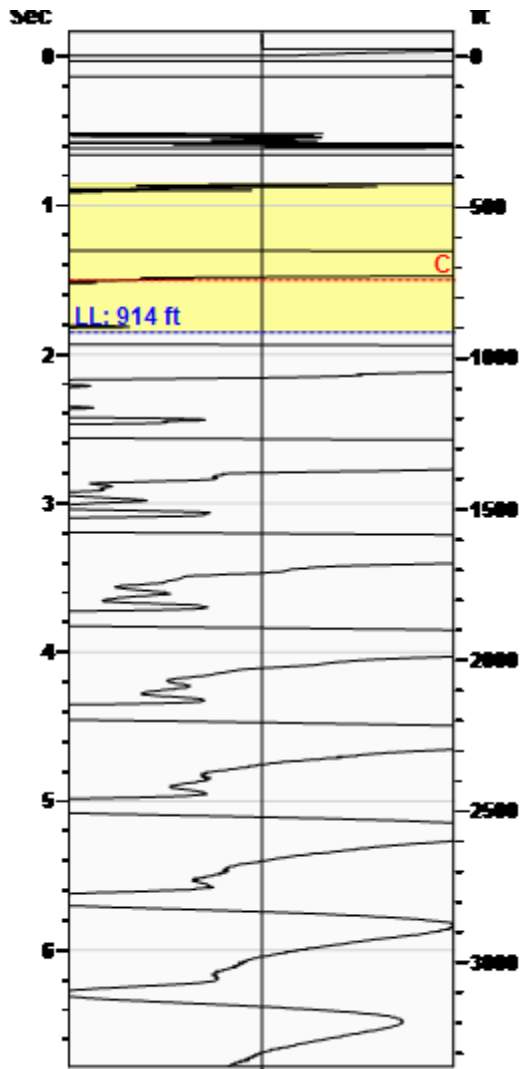
914 ft

Fluid Above Pump

2356 ft

Equivalent Gas Free Above Pump

2356 ft



Production

Date Entered	01/04/18		
	Current	Potential	
Oil	**	**	BBL/D
Water	**	**	BBL/D
Gas	**	**	Mscf/D
IPR Method	Vogel		
Producing Efficiency	0.00%		

Casing Pressure

Pressure	0.0 psi (g)
----------	-------------

Annular Gas Flow

Gas Flow	0.0 Mscf/D
----------	------------

Fluid Properties

% Liquid Above Pump	100.00%
% Liquid Below Pump	**

Wellbore Pressures

PIP	783.5 psi (g) @ 3270 ft
PBHP	781.0 psi (g) @ 3262 ft
SBHP	**
Gas/Liq Interface	0.5 psi (g) @ 914 ft

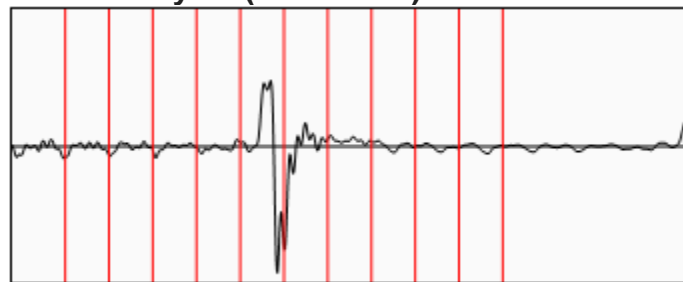
Depths

Pump Intake Depth	3270 ft
Formation Depth	3262 ft

Sensor Serial No.

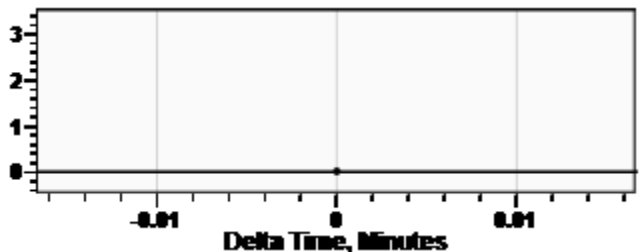
WG 4569

Collar Analysis (Automatic)



Average Acoustic Velocity	987 ft/s
Average Joints Per Sec.	15.09 Jts/sec
Joints To Liquid	27.94 Jts

Casing Pressure Buildup



Casing Pressure	0.0 psi (g)
Buildup	0.0 psi (g)
Buildup Time	0 sec
Gas Gravity	0.9786 Air = 1

Comments and Recommendations

Acoustic Test

Echometer Company
 5001 Ditto Lane
 Wichita Falls, TX 76302
 (940) 767-4334
 info@echometer.com

Conservation Division
District Office No. 2
3450 N. Rock Road
Building 600, Suite 601
Wichita, KS 67226



Phone: 316-337-7400
Fax: 316-630-4005
<http://kcc.ks.gov/>

Pat Apple, Chairman
Shari Feist Albrecht, Commissioner
Jay Scott Emler, Commissioner

Sam Brownback, Governor

January 11, 2018

SPENCER MUSGROVE
Samuel Gary Jr. & Associates, Inc.
1515 WYNKOOP, STE 700
DENVER, CO 80202

Re: Temporary Abandonment
API 15-159-22438-00-00
COLBERG 2-28
NW/4 Sec.28-18S-09W
Rice County, Kansas

Dear SPENCER MUSGROVE:

Your application for Temporary Abandonment (TA) for the above-listed well is denied for the following reasons(s):

High Fluid Level
Inaccurate shut-in date, KGS shows last produced in 5-2015.

Pursuant to K.A.R. 82-3-111, the well must be plugged, or returned to service, or obtain temporary abandonment status by February 08, 2018.

This deadline does NOT override any compliance deadline given to you in any Commission Order.

You may contact me if you have any questions.

Sincerely,
Virgil Clothier
KCC DISTRICT 2