



TRILOBITE TESTING, INC.

DRILL STEM TEST REPORT

Vincent Oil Corporation
155 N Market Ste 700
Wichita, KS 67202
ATTN: Tom Dudgeon

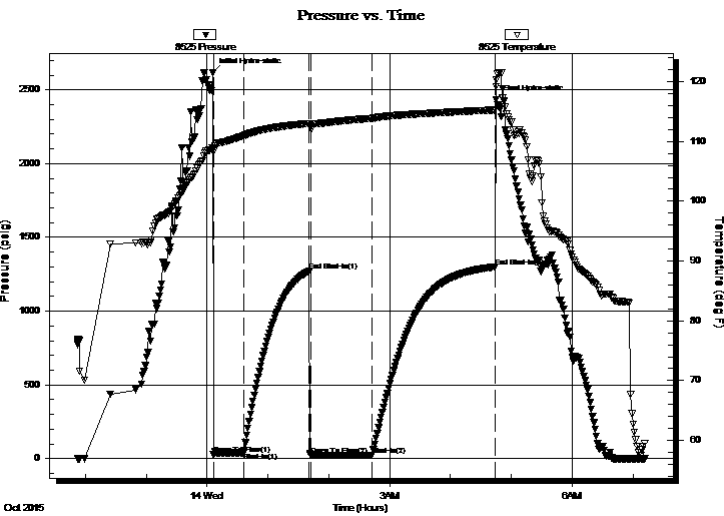
27-28S-23W Ford,KS
McCarty #1-27
Job Ticket: 57915 **DST#: 2**
Test Start: 2015.10.13 @ 21:52:19

GENERAL INFORMATION:

Formation: **Morrow/Penn**
Deviated: No Whipstock: ft (KB) Test Type: Conventional Bottom Hole (Reset)
Time Tool Opened: 00:06:04 Tester: Leal Cason
Time Test Ended: 07:11:49 Unit No: 74
Interval: 5140.00 ft (KB) To 5184.00 ft (KB) (TVD) Reference Elevations: 2520.00 ft (KB)
Total Depth: 5184.00 ft (KB) (TVD) 2508.00 ft (CF)
Hole Diameter: 7.88 inches Hole Condition: Good KB to GR/CF: 12.00 ft

Serial #: 8525 Inside
Press@RunDepth: 22.29 psig @ 5141.00 ft (KB) Capacity: 8000.00 psig
Start Date: 2015.10.13 End Date: 2015.10.14 Last Calib.: 2015.10.14
Start Time: 21:52:20 End Time: 07:11:49 Time On Btm: 2015.10.14 @ 00:05:19
Time Off Btm: 2015.10.14 @ 04:45:04

TEST COMMENT: IF: Strong Blow , BOB in 4 minutes
IS: No Blow Back
FF: Strong Blow , BOB immediate, GTS in 18 minutes, TSTM, Caught Sample
FS: No Blow Back



PRESSURE SUMMARY

Time (Min.)	Pressure (psig)	Temp (deg F)	Annotation
0	2614.54	108.99	Initial Hydro-static
1	31.60	108.39	Open To Flow (1)
31	40.57	110.95	Shut-In(1)
96	1272.58	113.01	End Shut-In(1)
97	23.69	112.43	Open To Flow (2)
158	22.29	113.86	Shut-In(2)
279	1299.53	115.27	End Shut-In(2)
280	2432.37	119.20	Final Hydro-static

Recovery

Length (ft)	Description	Volume (bbl)
0.00	5125 GIP	0.00
10.00	GCM 10%G 90%M	0.05

* Recovery from multiple tests

Gas Rates

	Choke (inches)	Pressure (psig)	Gas Rate (Mcf/d)



**TRILOBITE
TESTING, INC**

DRILL STEM TEST REPORT

FLUID SUMMARY

Vincent Oil Corporation

27-28S-23W Ford,KS

155 N Market Ste 700
Wichita, KS 67202

McCarty #1-27

Job Ticket: 57915

DST#: 2

ATTN: Tom Dudgeon

Test Start: 2015.10.13 @ 21:52:19

Mud and Cushion Information

Mud Type: Gel Chem
Mud Weight: 9.00 lb/gal
Viscosity: 49.00 sec/qt
Water Loss: 9.18 in³
Resistivity: ohm.m
Salinity: 6700.00 ppm
Filter Cake: 0.02 inches

Cushion Type:
Cushion Length: ft
Cushion Volume: bbl
Gas Cushion Type:
Gas Cushion Pressure: psig

Oil API: deg API
Water Salinity: ppm

Recovery Information

Recovery Table

Length ft	Description	Volume bbl
0.00	5125 GIP	0.000
10.00	GCM 10%G 90%M	0.049

Total Length: 10.00 ft Total Volume: 0.049 bbl

Num Fluid Samples: 0

Num Gas Bombs: 0

Serial #:

Laboratory Name:

Laboratory Location:

Recovery Comments:

Serial #: 8525

Inside

Vincent Oil Corporation

McCarthy #1-27

DST Test Number: 2

