



Scale 1:240 Imperial

Well Name: McCarty 1-27  
Surface Location: NW SW NW SE 27-28S-23W  
Bottom Location:  
API: 15-057-20967-00-00  
License Number: 5004  
Spud Date: 10/5/2015 Time: 6:30 PM  
Region: SW KS  
Drilling Completed: 10/16/2015 Time: 4:58 AM  
Surface Coordinates: 1750 FSL & 2355 FEL  
Bottom Hole Coordinates:  
Ground Elevation: 2507.00ft  
K.B. Elevation: 2520.00ft  
Logged Interval: 4250.00ft To: 5360.00ft  
Total Depth: 5360.00ft  
Formation: MISS  
Drilling Fluid Type: Chemical

#### OPERATOR

Company: Vincent Oil Corporation  
Address: 155 N Market Ste 700  
Wichita KS 67202  
Contact Geologist: Dick Jordan  
Contact Phone Nbr: 316.262.3573  
Well Name: McCarty 1-27  
Location: NW SW NW SE 27-28S-23W API: 15-057-20967-00-00  
Pool: Development Field: Mulberry Creek  
State: KS Country: USA

#### CONTRACTOR

Contractor: Duke Drilling Co. Inc.  
Rig #: 9  
Rig Type: Rotary  
Spud Date: 10/5/2015 Time: 6:30 PM  
TD Date: 10/16/2015 Time: 4:58 AM  
Rig Release: 10/17/2015 Time: 1:00 AM

#### LOGGED BY

Company: Vincent Oil Corporation  
Address: 155 N Market Ste 700  
Wichita KS 67202  
Phone Nbr: 316.262.3573  
Logged By: Geologist Name: Tom Dudgeon

#### SURFACE CO-ORDINATES

Well Type: Vertical  
Longitude: 99.8215445  
Latitude: 37.5768676

Longitude: -99.8215443  
 N/S Co-ord: 1750 FSL  
 E/W Co-ord: 2355 FEL

Latitude: 37.5766676

### ELEVATIONS

K.B. Elevation: 2520.00ft      Ground Elevation: 2507.00ft  
 K.B. to Ground: 13.00ft

### TOTAL DEPTH

Measurement Type:	Measurement Depth:	TVD:
LTD	5362.00	5362.00
RTD	5360.00	5362.00

### DRILLING FLUID SUMMARY

Type	Date	From Depth	To Depth
Chemical Mud	10/19/2015	3732.00ft	5360.00ft

### OPEN HOLE LOGS

Logging Company: CJ Casedhole Solutions  
 Logging Engineer: Jason Cappellucci  
 Truck #: 4010  
 Logging Date: 10/16/2015      Time Spent: 5  
 # Logs Run: 3      # Logs Run Successful: 3

### LOGS RUN

Tool	Logged Interval	Logged Interval	Hours	Remarks	Run #
DUAL INDUCTIV	0.00ft	5362.00ft	3.00		1
CNDE/NEU/PE	4250.00ft	5362.00ft	3.00		1
MICRO	4250.00ft	5362.00ft	2.00		2

### LOGGING OPERATION SUMMARY

Date	From	To	Description Of Operation
10/19/2015	0.00ft	5362.00ft	LOGS RAN SUCCESSFULLY

### CASING SUMMARY

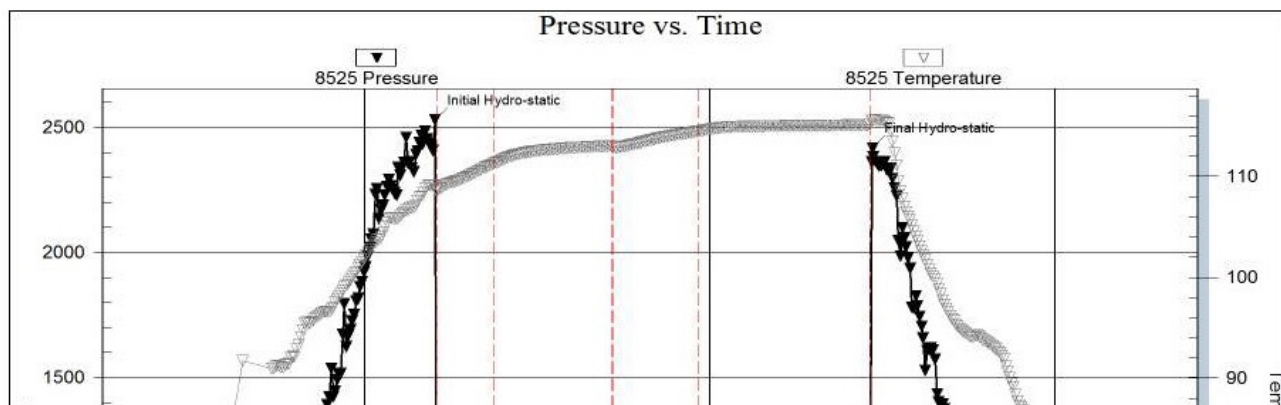
	Surface	Intermediate	Main		
Bit Size	12.25 in		7.88 in		
Hole Size	12.25 in		7.88 in		
	Size	Set At	Type	# of Joints	Drilled Out At
Surf Casing	8.625 in	652 ft	23#	15	
Int Casing					
Prod Casing	N/A in				

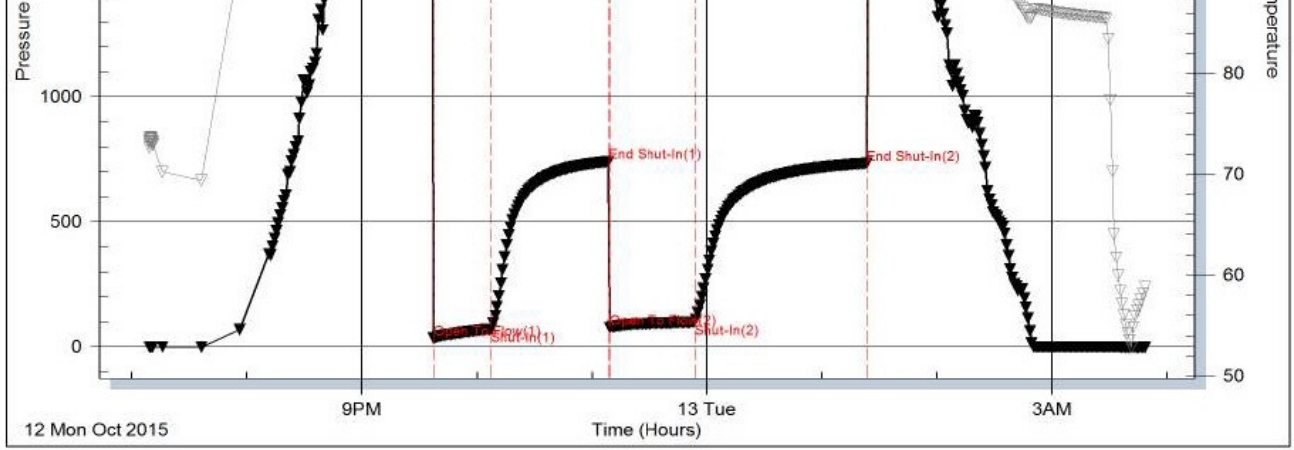
### CASING SEQUENCE

Type	Hole Size	Casing Size	At
Surface Casing	12.25 in	8.63	652.00 ft

### DST #1

Serial #: 8525      Inside      Vincent Oil Corporation      McCarty #1-27      DST Test Number: 1





Triobite Testing, Inc

Ref. No: 57914

Printed: 2015.10.16 @ 15:25:49

### DST #2

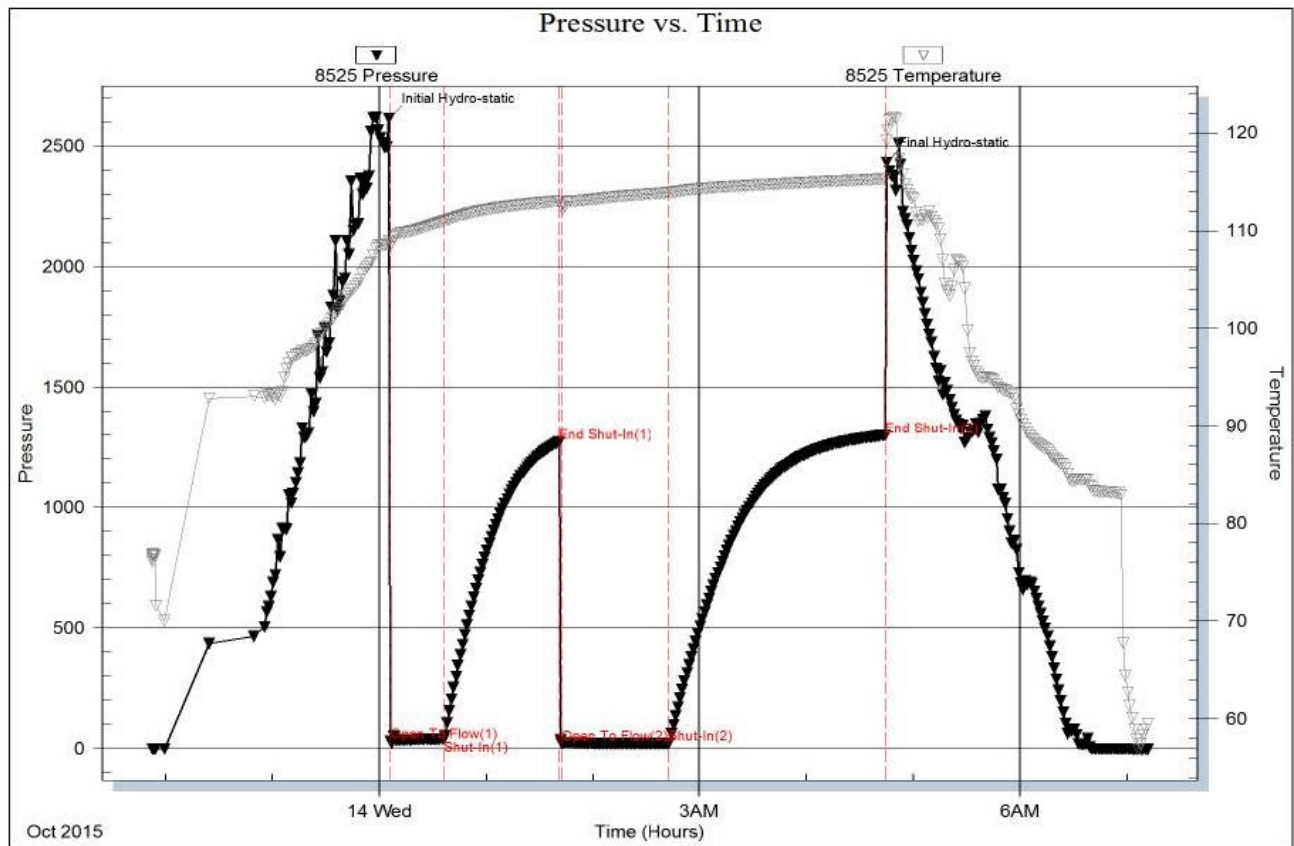
Serial #: 8525

Inside

Vincent Oil Corporation

McCarty #1-27

DST Test Number: 2



Triobite Testing, Inc

Ref. No: 57915

Printed: 2015.10.16 @ 15:25:24

### DST #3

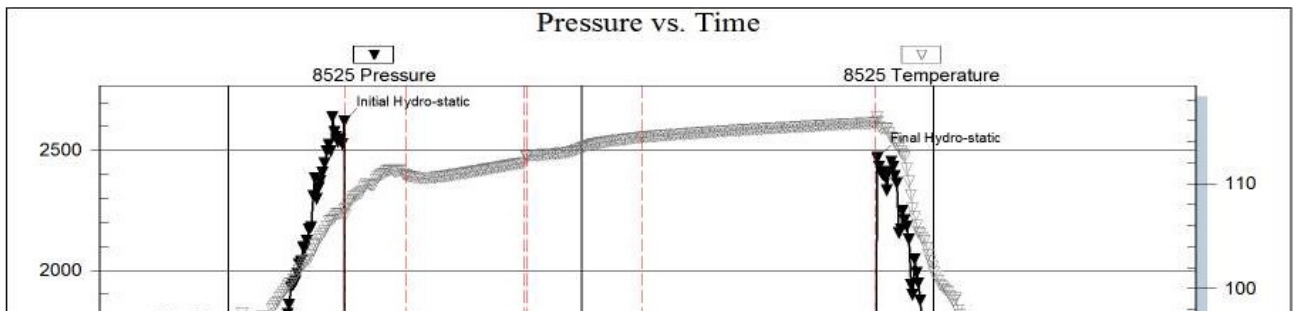
Serial #: 8525

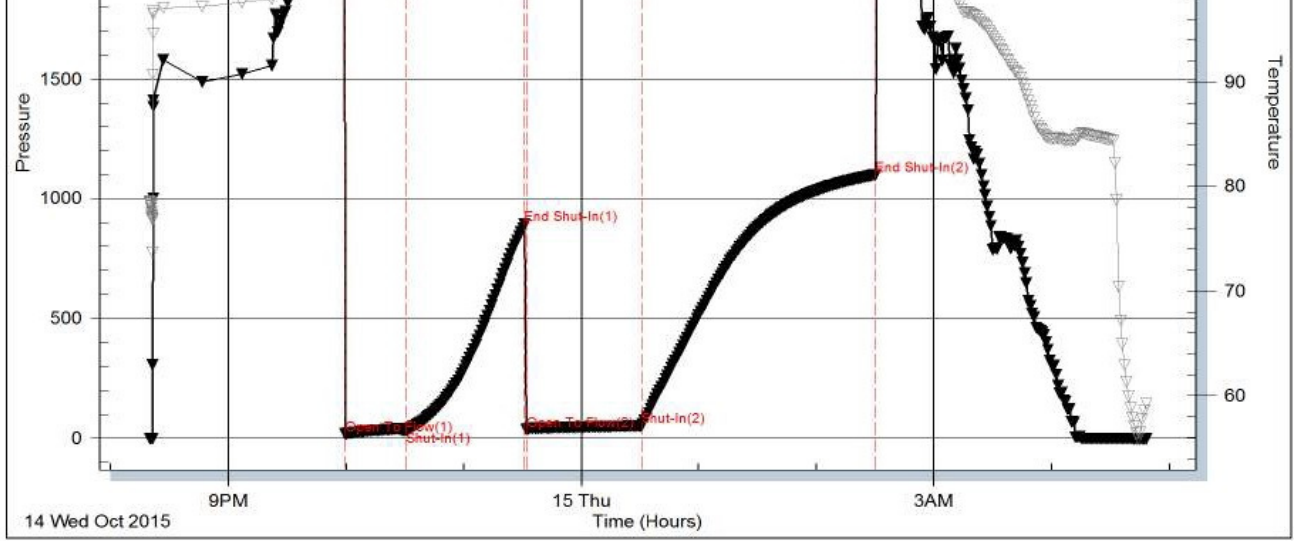
Inside

Vincent Oil Corporation

McCarty #1-27

DST Test Number: 3





Trilobite Testing, Inc

Ref. No: 57916

Printed: 2015.10.16 @ 15:24:54

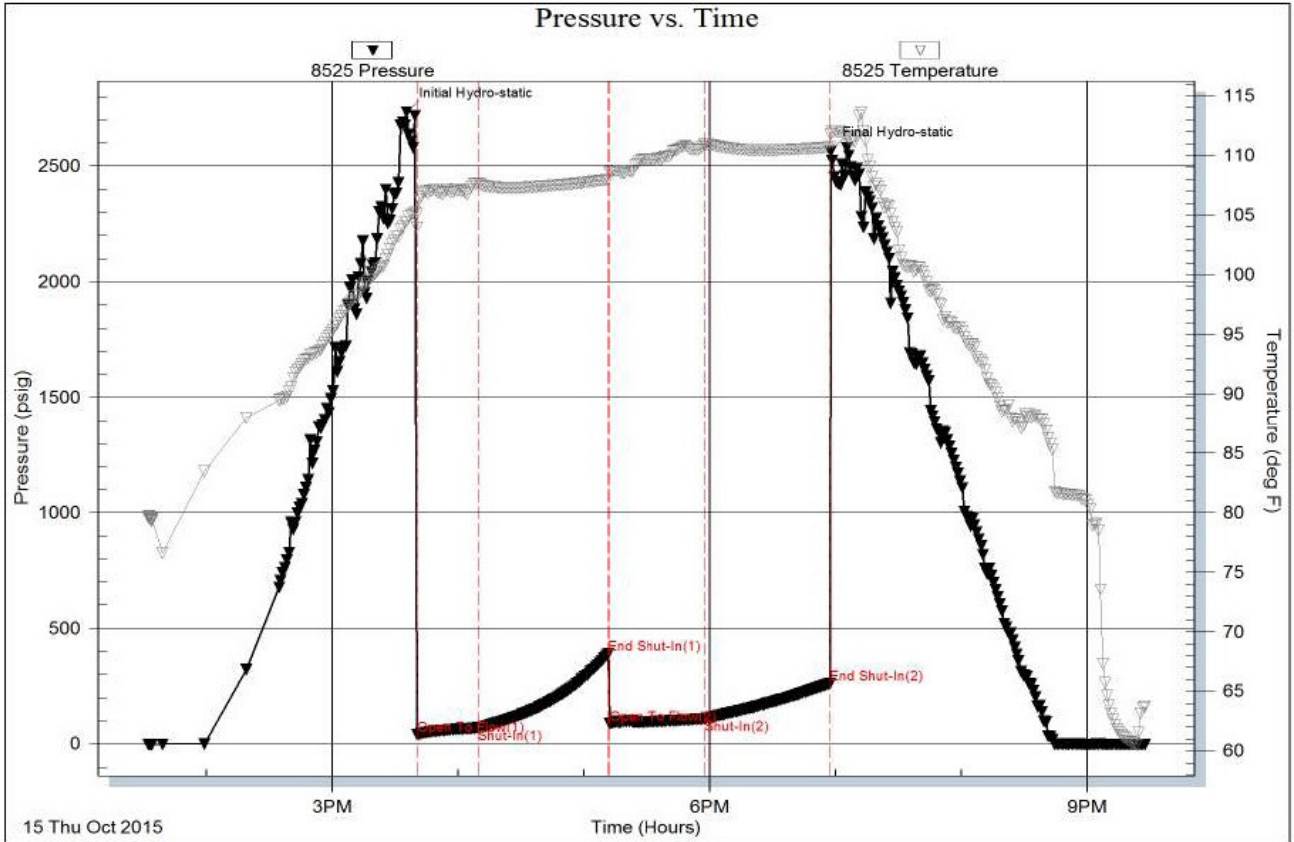
### DST #4

Serial #: 8525

Inside Vincent Oil Corporation

McCarty #1-27

DST Test Number: 4



Trilobite Testing, Inc

Ref. No: 57917

Printed: 2015.10.16 @ 15:24:22

### ROCK TYPES

Coal	Lmst fw<7	Shgy	Chtcongl
Congl	Lmst fw>7	Shblk	
Dolsec	Ss	Shcol	

### ACCESSORIES

#### MINERAL

- ⊥ Calcareous
- Carbonaceous Flakes
- ▲ Chert, dark

#### FOSSIL

- ◇ Brachiopod
- Crinoids
- F Fossils < 20%

#### STRINGER

- Dolomite
- Sandstone
- Chert

#### TEXTURE

- C Chalky
- FX Finexln
- MX Microxln

#### MISC

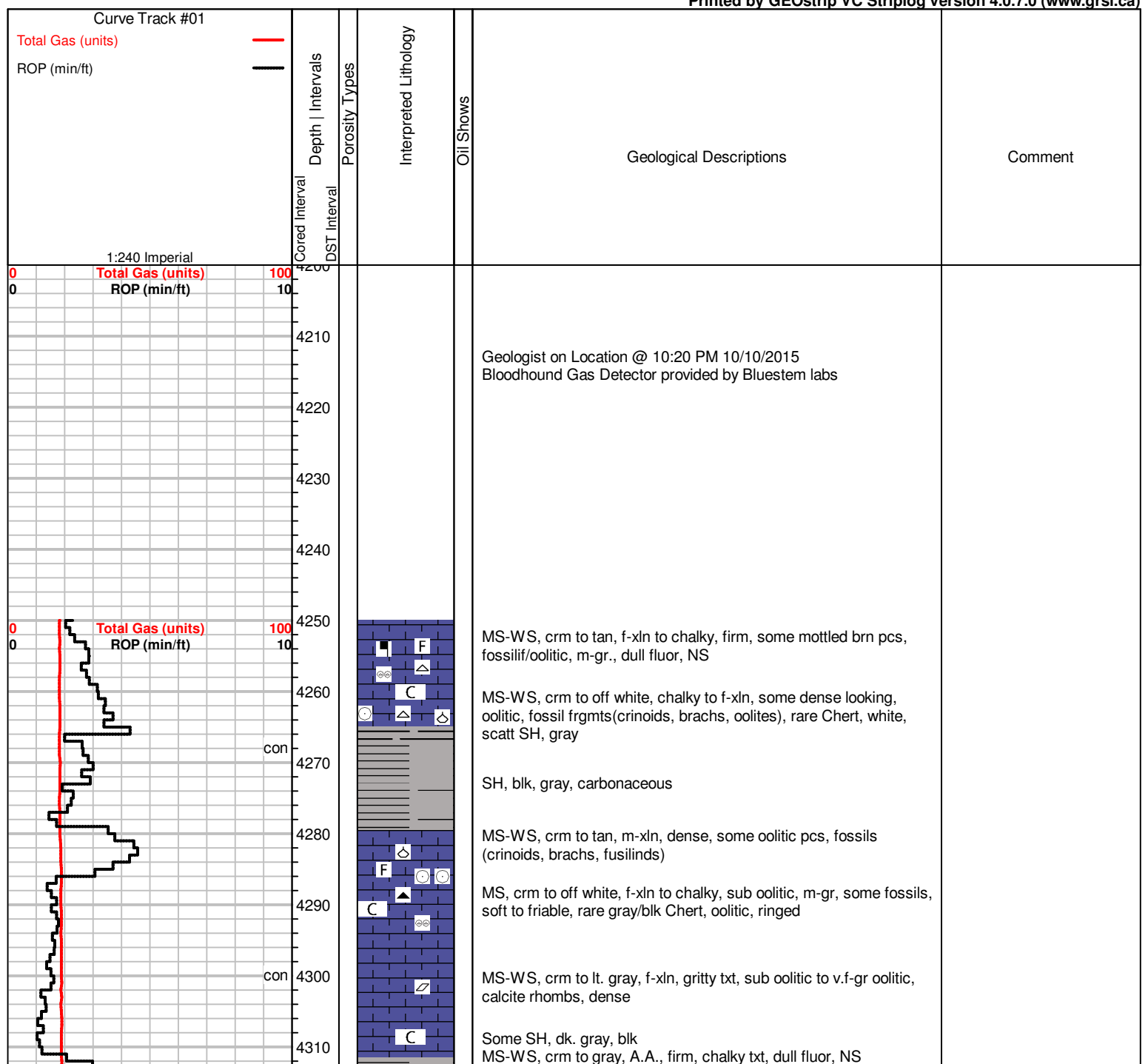
- ▨ Veins

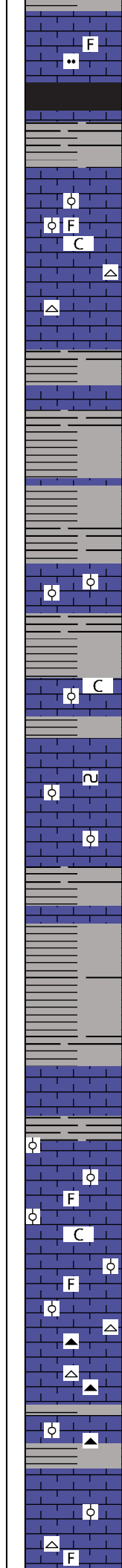
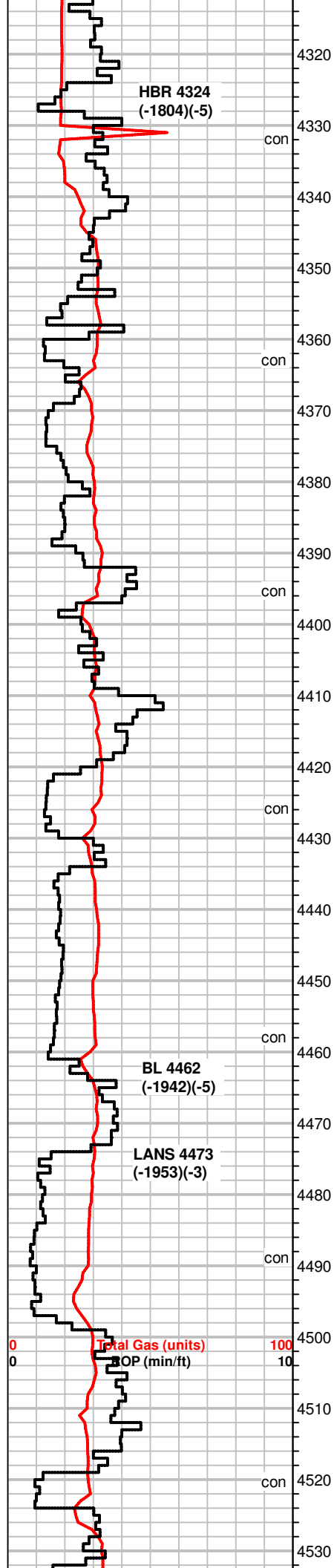
- ∠ Dolomitic
- Ferruginous, grains or p...
- ∩ Glauconite
- Heavy, dark minerals
- P Pyrite
- Sandy
- Silty
- ⊖ Chert nodules
- ∴ Varicolored chert
- ∕ Euhed rhombs of dol or
- △ Chert White
- Argillaceous/Shale
- ⊙ Gastropod
- ⊙ Oolite

**OTHER SYMBOLS**

- |   |  |   |
|---|--|---|
| <p><b>POROSITY TYPE</b></p> <ul style="list-style-type: none"> <li>× Intercrystalline</li> <li>⊕ Interoolitic</li> <li>V Vuggy</li> <li>P Pinpoint</li> <li>∩ Moldic</li> <li>O Organic</li> <li>F Fracture</li> <li>e Earthy</li> <li>□ Fenestral</li> </ul> | <p><b>OIL SHOWS</b></p> <ul style="list-style-type: none"> <li>● Even Stn</li> <li>● Spotted Stn 50 - 75 %</li> <li>● Spotted Stn 25 - 50 %</li> <li>○ Spotted Stn 1 - 25 %</li> <li>○ Questionable Stn</li> <li>D Dead Oil Stn</li> <li>■ Fluorescence</li> </ul> | <p><b>INTERVALS</b></p> <ul style="list-style-type: none"> <li>■ Core</li> <li>∴ DST</li> </ul> |
|---|--|---|

Printed by GEOstrip VC Striplog version 4.0.7.0 (www.grsi.ca)





Scatt SH, blk, gray  
MS-WS, crm to gray, f-xln, chalky in part, firm, scatt fossils, silty in part

SH, blk, brn, gray

MS, off white to crm, f-xln, chalky txt in part, soft to hard pcs throughout, sub oolitic, scatt fossils,

MS, crm to off white, f-xln, friable, scatt Chert, white

SH, gray, red, green, yellow, varicolored

SH, varicolored, gray, blk  
MS, A.A.

SH, gray, red

MS-WS, crm to tan, some gray, mic to f-xln, hard, oolitic, some mottle pcs, dull fluor, NS

SH, blk, grays, green, yellow  
MS, crm to brn, f-xln, some chalky, scatt fossils, calcite rhombs, dull fluor, NS

MS, off white to crm, f-xln, sub oolitic, rare fossils  
SH, blk, gray

MS-WS, crm to gray, mic-xln, some pcs dark on edges, fossils, glauc, hard, dull fluor, dark ringed ooids

MS, brn to tan, some crm, dark m-gr ooids, f-xln, fossilif., NS

SH, blk, gray

WS, crm to tan, mic-xln, tite cement, m-gr oolitic, fossil frgmts, firm to hrad, some pcs w/ dark ooids  
SH, gray

SH, gray, green

MS-WS, brn, fossilif., hard, mic to f-xln, NS

Scatt SH, gray, green, brn

MS-WS, crm to tan, f-xln, fossilif, sli. oolitic, dense, NS

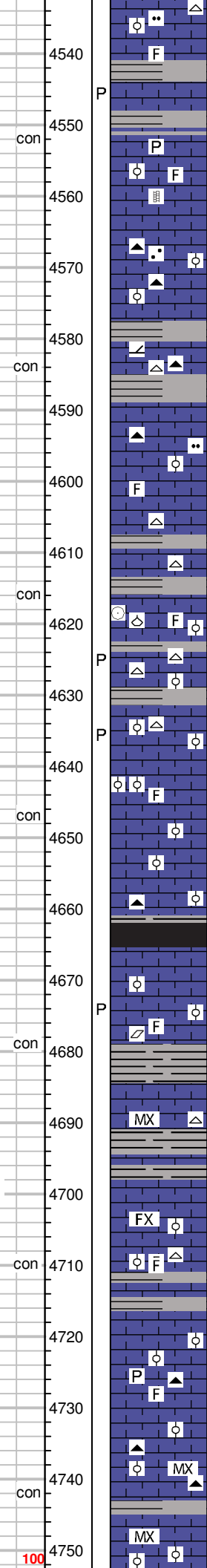
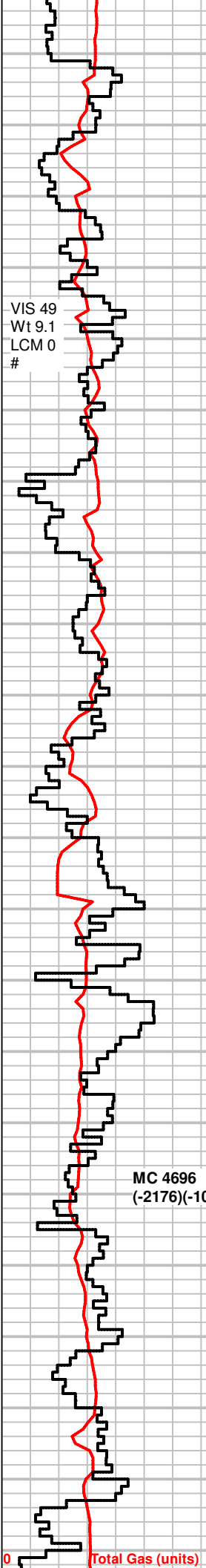
WS-MS, crm, rare brn, f-xln, chalky in part, fossilif, sub oolitic, NS

WS-MS, crm to gray, mic-xln, soft, chalky matrix, oolitic, fossilif.

MS-WS, crm to gray, f-xln, firm, sli. chalky, scatt fossils, Chert, white, gray, rare ooids  
SH, gray

MS-WS, A.A.  
SH, gray, rare blk, green

MS-WS, crm to lt. gray, some tan, f-xln, hard, oolitic pcs rare, m-gr., dense, mineral fluor, NS



MS, crm to gray, f-xln, sli. gritty txt. hard ,dense, scatt fossils. Chert, white

MS, crm to lt. gray, f-xln, sli. chalky txt, firm, friable in part, sub oolitic, scatt fossils, lt edge stn in por., PP por some SH, gray, blk

MS-crm to lt. gray, A.A., calcite veins, rare brn fossilif pcs, pyrite, no fluor, NS

MS-WS, lt. gray, to off white, mic to f-xln, dense, sub oolitic, sandy pcs, NS  
Chert, gray

MS, crm to gray, mic-xln, dense, rare fossils, rare dolomitic pcs, bright fluor, NS  
Chert, blk, gray, white  
some SH, gray, green, dk. gray

MS, gray to crm, f-xln, soft to firm, silty

MS-WS, gray to crm, f-xln, firm to soft, friable, gritty to silty txt, sli. chalky matrix, heavy minerals, fossilif, Chert, gray, white, fossilif. scatt SH, gray

MS, crm to lt. gray, chalky, gritty txt A.A., dense, hard, Chert, orange, white, SH, gray, green

WS, crm to brn, mic-xln, some pcs fossilif, crinoids, brachs, oolites, Chert, white, fossilif. scatt SH, gray, some green

MS, crm , scatt gray, crip-mic-xln, massive looking txt, firm to hard, heavy minerals, Chert, white, opaque, tan, scatt SH, gray

MS-WS, crm to brn, mic-xln, some pcs chalky matrix, hard to firm, brn pcs dense, oolitic, fossilif., rare lt. edge stn in dry

MS-WS, crm to lt. brn, f-xln, some pcs gritty txt, sub oolitic, fossilif, NS, scatt SH, gray

MS-WS, crm to tan, chalky to f-xln, firm, some pcs dense, oolitic, Chert, gray, fossilif, NS  
SH, gray,  
SH, blk, carbonaceous, gray, green

MS, gray to brn, f-xln, oolitic/fossilif, friable, NS

WS-MS, crm to gray, some brn, m to f-xln, m-gr oolitic, fossilif. hard, scatt calcite, rare lt. edge stn in dry  
SH, gray, sea green

MS, crm, mic-xln, chalky matrix in pcs, soft, Chert, white, fossils SH, rare blk, gray

MS-WS, crm, tan, some gray, f-xln, some dense/massive txt, rare chalky pcs, 1pc w/ bright spotty fluor, no cut, NS

WS, crm to tan, off white, f-xln, hard, fossilif, sub oolitic in part, Chert, white  
SH, gray, red

WS, A.A., chalky pcs scattered, oolitic, f to m-gr ooids, dense SH gray, platy

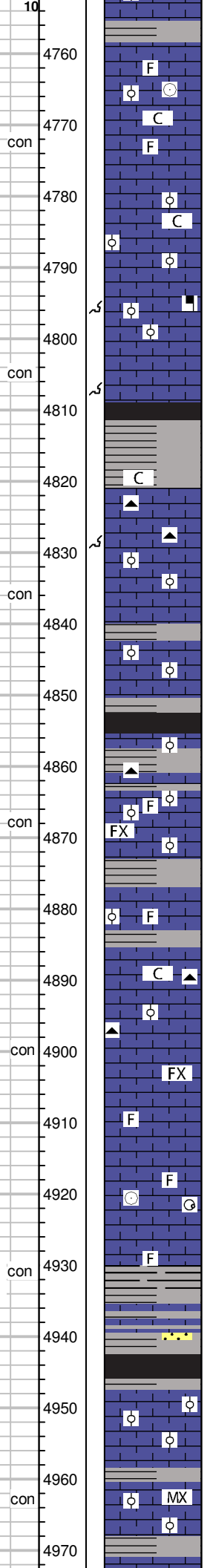
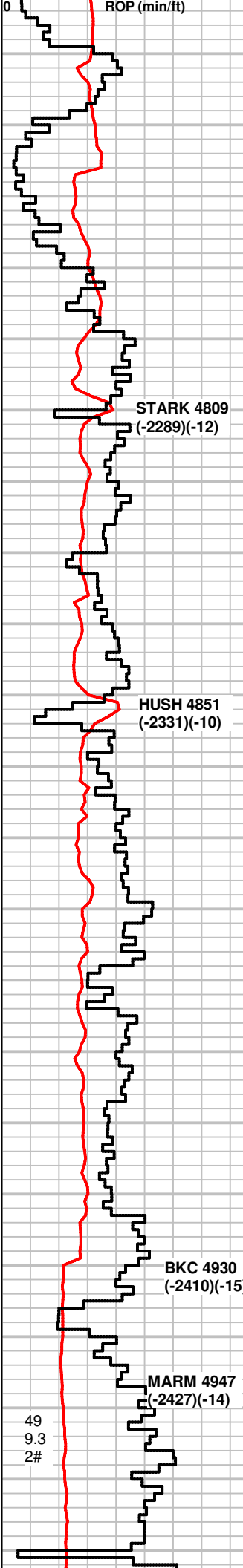
WS-MS, off white, f-xln, firm, some dense pcs, chalky matrix in part, pyrite replaced fossil frgmts, brachs Chert, blk

MS-WS, crm to tan, some off white, mic-xln, dense, some pcs friable, lime clasts, scatt micro to f-gr oolitic pcs, Chert, opaque, gray,  
scatt SH, varicolored

MS, crm to gray, dense, WS, A.A.

MC 4696  
(-2176)(-10)

Total Gas (units)



SH, gray to green

WS, crm to off white, some lt. gray, chalky, friable, some f-xln, dense massive txt in part, fossilif.

WS, crm to off white, some lt. gray, chalky, some f-xln, dense/massive txt in part, friable, fossilif. Scatt SH, varicolored

MS, scatt WS, tan, crm to gray, f-xln, some chalky, m-gr oolitic pcs, dense looking, friable, dull fluor, NS

MS-WS, crm to tan, f-xln, some oolitic, m-gr ooids, gritty to silty txt, some heavy minerals, rare SH, gray, red

SH, blk, gray, red, gas bubbles

SH, gray, green  
MS, crm to tan, some brn, f-xln, chalky, firm, scatt WS, A.A., Chert, brn

MS-WS, crm to brn, f-xln, some pcs oolitic, m-gr ooids, soft, scatt dense pcs, NS

MS, scatt WS, crm to brn, fossilif, A.A.  
Scatt SH, gray

SH, blk, gray, flaky

MS, crm, mic-xln, some micro oolitic, hard  
Chert, white, blk, blue, gray, some fossils

Scatt SH, gray, blk, carb.  
MS, brn to crm, f-xln, massive txt, some shaly pcs, soft to firm, sub oolitic, fossilif., NS

MS-WS, crm to tan, f-xln, partially chalky, sub oolitic, dense, some pcs soft  
Chert, white  
Scatt SH, brn, gray, red

MS, crm to off white, f-xln to chalky, firm to friable, rare fossils  
Chert, brn, white, fossilif., some SH, gray, green-waxy

MS, crm to brn, f-xln, some WS, fossilif, chalky matrix, friable, NS, Chert, white, brn

MS, crm, brn, gray, A.A., some dense, crinoid sections, fossilif, NS, Chert, white

MS, crm to gray, f-xln, firm to hard, scatt fossils, massive txt, Chert, brn, white  
SH, gray, sea green, waxy

SH, gray, green, brn, MS, A.A., Chert, white

SH, blk, gray, brn, rare qtz-SS cluster, f-gr, well sorted, friable, NS

MS, crm to tan, f-xln to mic-xln, some chalky pcs, rare WS, m-gr oolitic, some pcs dense

MS, crm to lt. gray, mic-xln, chalky in part, sandy, silty, sub oolitic in part, NS

SH, gray, green

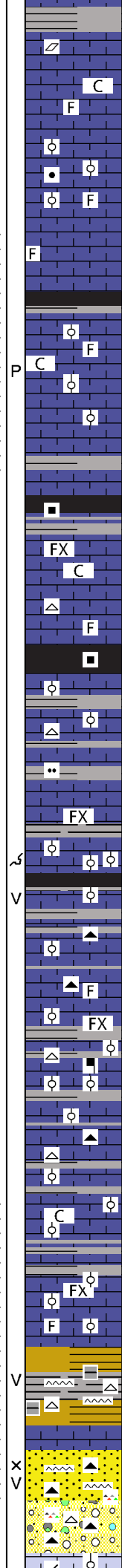
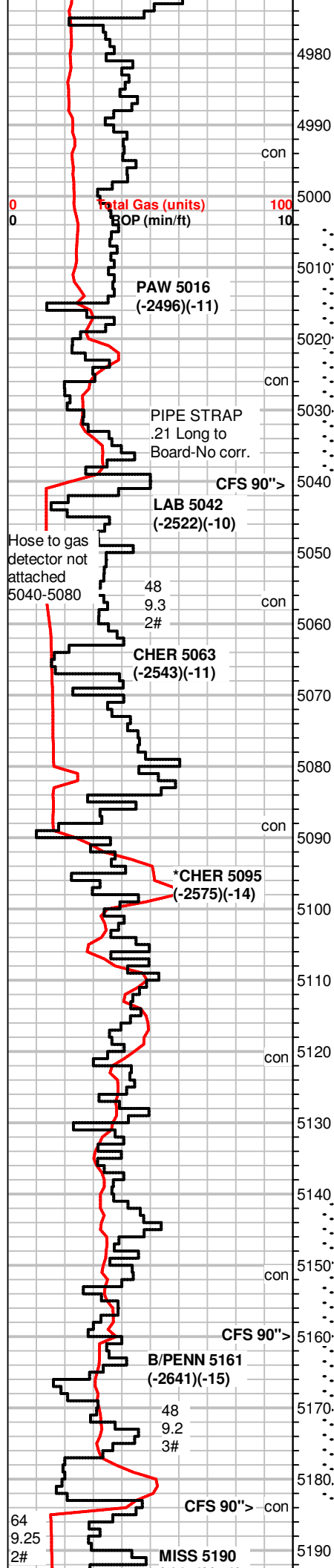
**+12 UGK, shale gas**

**+13 UGK, shale gas**

**DST #1 5004-5040**  
**Pawnee**  
**30-60-45-90**  
**WB BOB 20"**  
**NBB**  
**WB BOB 44"**  
**NBB**  
**133' GIP**  
**Rec:182' Total Fluid**  
**62' SOCM (2o,98m)**  
**120' MCW (70w,30m)**  
**41.25884**

49  
9.3  
2#





MS, crm to gray, f-xln, firm to hard, most pcs dense, scatt calcite rhombs, dull fluor, NS, Chert, tan

MS-WS, crm to gray, A.A., some chalky pcs

MS, crm to tan, f-xln to chalky in part, some fossilis, barren, NS scatt SH, gray, green

MS-WS, crm to tan, f-xln, gritty txt, some minerals, dense, sub oolitic, fossilif. mineral fluor, NS

MS, crm, chalky, firm, fossilif pcs, Chert, white, tan, fossilif.

SH, rare blk, gray

WS-MS, crm, chalky, some pcs f-xln, firm to soft, some fossilis, chert, white, **rare bright fluor, some pcs slow milky cut, faint odor in bag, rare lt edge stn in dry**

MS-WS, A.A., **inc in bright fluor, 1 pc inst. streaming cut, some pcs residual ring cut.**

SH, blk, gray, carbonaceous, some gas bubbles

WS, crm to tan, f-xln, sub oolitic, some chalky, firm to soft, rare glauc specs, NS

MS-WS, crm to brn, gray, f-xln, hard, some pcs dense, Chert, white, fossilis

SH, blk, dk. gray, gas bubbles

MS, crm to off white, chalky, f-xln, sub oolitic pcs, dense Chert, white

WS, crm to brn, f-xln, sub oolitic in part, fossilif., gritty txt, some chalky pcs, scatt SH, gray, green, blk

SH, blk, gray

MS-WS, rare PS, crm to gray, f-xln, soft, rare oolitic PS, some dense, dull fluor, NS

MS-WS, crm to brn, f-xln, oolitic, firm, some pcs dense, Chert, brn. scatt SH, blk, gray

MS-WS, A.A., some gray, fossilif, dense, some minerals present, some pcs waxy

WS, crm to tan, f-xln, sub oolitic, some pcs chalky txt, heavy mineral specs, calcite rhombs, Chert, white scatt SH, gray, blk, carb.

WS-MS, brn to crm, f-xln, sub oolitic, hard, some shaly pcs, Chert, brn, white scatt SH, dk. gray, gray

WS, rare PS, brn to crm, A.A, some dense, chalky pcs scatt, **rare spotty bright flour(1pc), slow milky cut, no odor** scatt SH, gray

MS-WS, crm to brn, f-xln to chalky, scatt f-gr oolitic PS, firm, **rare bright fluor(2pcs), 1 pcs slow milky cut.**

WS, crm to brn, A.A., rare brn f-gr oolitic to sub oolitic pcs, **rare bright flour in tray, instant cut(2 pcs), few pcs w/ slow milky cut, no odor, no gas inc., wormy dead stn, spotty stn in dry**

SH, blk, sea green, gray, yellow, maroon, Chert, varicolored, some fossilif. stn in vugs,

MS, some WS, crm to brn, mic-xln, dense, oolitic in part, carrying shows A.A.

Chert, varicolored, some weathered, **partial stain, rare oil in vugs, SS clusters, f-gn, well sorted, some tite pcs, friable, dark stn on pcs, milky cut, faint odor in bag, 60"-Chert, varicolored A.A., SS clusters, bleeding gas, free oil in tray, instant cut, odor when broken**

SH & Chert. varicolored. MS. crm. chalky to f-xln. suboolitic.

IH 2528#  
 IF 30-70#  
 ISIP 740#  
 FF 76-99#  
 FSIP 733#  
 FH 2417#  
 Temp 115°F  
 Rw .15 @ 60°F  
 CI 58,000ppm

+3 UGK, shale gas

+16 UGK, w/ +9 UGK recycle

DST #2 5140-5184  
 B/Penn-Morrow  
 30-60-60-120  
 SB, BOB 4min  
 NBB  
 SB, BOB immed GTS  
 18min TSTM  
 NBB  
 5125' GIP  
 Rec: 10' GCM (10g,90m)  
 IH 2614#  
 IF 32-41#  
 ISIP 1273#  
 FF 24-22#  
 FSIP 1300#  
 FH 2432#  
 Temp 120°F

+20 UGK, w/ 11 UGK recycle

(-2670)(-19)

CFS 90"> 5200

5210

CFS 90"> 5220

con 5230

CFS 90"> 5230

trip gas

5240

trip gas recycle

con 5250

Total Gas (units)

ROP (min/ft)

CFS 90"> 5260

5270

Gas Detector quit lagging @ 5279- Trip gas was recycling through system

con 5280

5290

5300

con 5310

Trip gas decreasing to 20 units background @ RTD

5320

5330

con 5340

5350

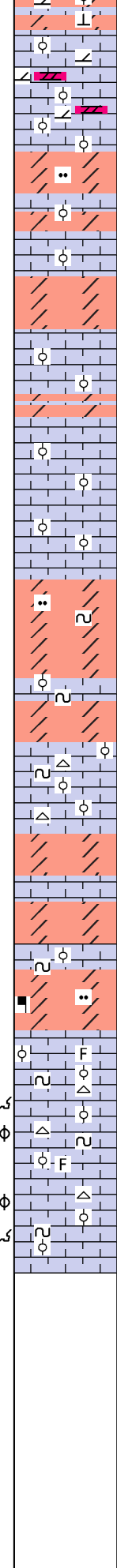
CFS 90"> 5360

RTD 5360 @ 4:58 AM 10/16/2015 LTD 5362

5370

5380

5390



fossilif. NS  
 MS-WS, rare PS, crm to brn, mic to f-xln, m-gr oolitic to suboolitic, some pcs dolomitic, Scatt Dolo, crm to lt. gray, vf-sucrosic, gritty txt, some pcs limey, mineral fluor, NS

Scatt dolomitic lime, greenish crm, f-suc, firm, dul fluor, NS  
 WS, crm to brn, f-xln, firm to dense, some off white chalky pcs, most sub oolitic, dull fluor, NS

Dolo, brn to crm, f-suc, firm, **bright fluor, good odor, some pcs partial stain in wet, free oil droplets in tray and on break, inst. cut 1/2 of select pcs, spty to even stn dry**

WS, brn to crm, f-xln, dense, sub oolitic

Dolo, crm to brn, vf-suc, friable, **good odor, bright fluor, spotty stn on some pcs, instant to milky cut on select pcs**

WS-PS, crm to of white, f-xln, m-gr oolitic, firm to hard, some dense, dull fluor, NS

Rare Dolo, Brn, to crm, vf- suc, gritty txt, hard, dull fluor, no odor, no cut, NS

PS, off white, f-xln, m-gr oolitic, soft to firm, some pcs sli. dolomitic, dull fluor, NS scatt dolo, A.A,

WS-PS, crm to off white, f-xln, sub oolitic to m-gr oolitic, firm to hard, NS

Dolo, brn to crm, vf-xln, f-suc sugary txt, firm, dull fluor, no cut, NS

WS, off white to crm, chalky to f-xln, soft, scatt dense pcs, sub oolitic pcs, glauc specs, Chert, white

Dolo, gray to brn, vf-suc, m-gr sugary txt, firm, dull mineral fluor, NS

WS, off white to crm, f-xln, firm to hard, some chalky pcs, sub oolitic, NS  
 Chert, white, crm, gray

Dolo, brn to gray, some crm, f-xln, vf suc txt, hard to firm, dull fluor, NS

WS-PS, off white, f-xln sub oolitic, glauc, Assoc Chert, white

Dolo, brn to crm, A.A., some mineral spec inclusions, dull fluor, NS

WS-PS, crm to off white, f-xln, friable, m-gr oolitic pcs, glauc specs, A.A., dull fluor, NS

PS-WS, off white to crm, f-xln, m-gr oolitic, to sub oolitic in part, some pcs chalky, glauc specs, Chert, white, fossilif. scatt Dolo, crm to brn, vf-xln, f-suc, firm to hard, NS

WS-PS, off white, f-xln, m-gr oolitic, glauc, scatt chalky pcs A.A.

+45 UGK, +24 UGK recycle

DST #3 5198-5232  
 MISS  
 30-60-60-120  
 WB 1/2inch  
 NBB  
 SB BOB 5min  
 NBB  
 1195' GIP  
 Rec: 65' OCM (10o,90m)  
 IH 2621#  
 IF 18-33#  
 ISIP 893#  
 FF 36-52#  
 FSIP 1099#  
 FH 2470#  
 Temp 116°F

DST #4 5197-5260  
 MISS  
 30-60-45-60  
 WB  
 NBB  
 WB  
 NBB  
 Rec: 120' Mud  
 IH 2731#  
 IF 41-70#  
 ISIP 391#  
 FF 88-109#  
 FSIP 262#  
 FH 2564#  
 Temp 112°F