



## DRILL STEM TEST REPORT

Prepared For: **Ritchie Exploration, Inc**

8100 E 22nd St N #700  
Wichita, KS 67278

ATTN: John Goldsmith

### **Martin 4D #1**

#### **4-16s-36w Wichita,KS**

Start Date: 2017.10.20 @ 16:56:00

End Date: 2017.10.21 @ 01:34:30

Job Ticket #: 63690                      DST #: 1

Trilobite Testing, Inc  
PO Box 362 Hays, KS 67601  
ph: 785-625-4778 fax: 785-625-5620

Printed: 2017.10.26 @ 13:17:52



**TRILOBITE  
TESTING, INC.**

# DRILL STEM TEST REPORT

Ritchie Exploration, Inc  
8100 E 22nd St N #700  
Wichita, KS 67278  
ATTN: John Goldsmith

**4-16s-36w Wichita, KS**

**Martin 4D #1**

Job Ticket: 63690

**DST#: 1**

Test Start: 2017.10.20 @ 16:56:00

## GENERAL INFORMATION:

Formation: **LKC I - J**  
 Deviated: No Whipstock: ft (KB)  
 Time Tool Opened: 20:25:30  
 Time Test Ended: 01:34:30  
 Interval: **4247.00 ft (KB) To 4312.00 ft (KB) (TVD)**  
 Total Depth: 4312.00 ft (KB) (TVD)  
 Hole Diameter: 7.88 inches Hole Condition: Good  
 Test Type: Conventional Bottom Hole (Initial)  
 Tester: Bradley Walter  
 Unit No: 78  
 Reference Elevations: 3300.00 ft (KB)  
 3288.00 ft (CF)  
 KB to GR/CF: 12.00 ft

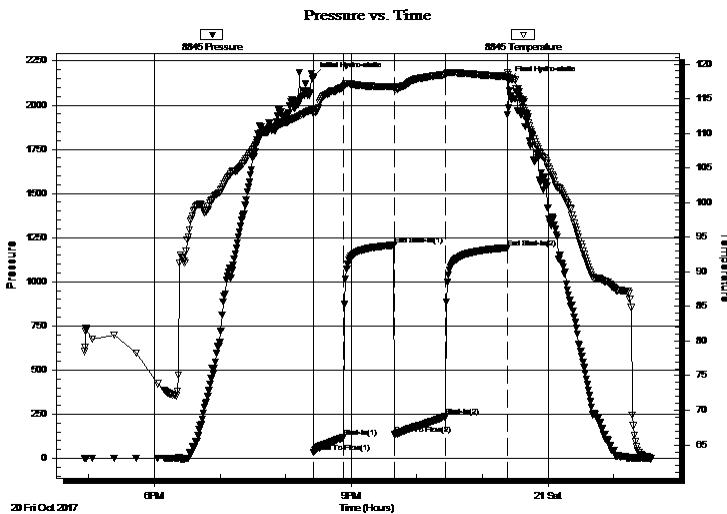
**Serial #: 8845**

**Outside**

Press@RunDepth: 236.45 psig @ 4248.00 ft (KB)  
 Start Date: 2017.10.20 End Date: 2017.10.21  
 Start Time: 16:56:05 End Time: 01:34:30  
 Capacity: 8000.00 psig  
 Last Calib.: 2017.10.21  
 Time On Btm: 2017.10.20 @ 20:25:15  
 Time Off Btm: 2017.10.20 @ 23:24:00

TEST COMMENT: IF: BOB @ 18 min.  
 IS: No return.  
 FF: BOB @ 22 min.  
 FS: No return.

## PRESSURE SUMMARY



Time (Min.)	Pressure (psig)	Temp (deg F)	Annotation
0	2159.04	113.49	Initial Hydro-static
1	33.46	112.88	Open To Flow (1)
28	119.38	116.70	Shut-In(1)
74	1207.63	116.70	End Shut-In(1)
75	136.67	116.38	Open To Flow (2)
121	236.45	118.47	Shut-In(2)
178	1192.55	118.20	End Shut-In(2)
179	2139.20	118.44	Final Hydro-static

## Recovery

Length (ft)	Description	Volume (bbl)
500.00	mcw 15m 85w	6.20
0.00	oil specs in tool	0.00

## Gas Rates

	Choke (inches)	Pressure (psig)	Gas Rate (Mcf/d)





**TRILOBITE  
TESTING, INC.**

# DRILL STEM TEST REPORT

**TOOL DIAGRAM**

Ritchie Exploration, Inc

**4-16s-36w Wichita,KS**

8100 E 22nd St N #700  
Wichita, KS 67278

**Martin 4D #1**

Job Ticket: 63690

**DST#: 1**

ATTN: John Goldsmith

Test Start: 2017.10.20 @ 16:56:00

## Tool Information

Drill Pipe:	Length: 4145.00 ft	Diameter: 3.80 inches	Volume: 58.14 bbl	Tool Weight: 2500.00 lb
Heavy Wt. Pipe:	Length: 0.00 ft	Diameter: 0.00 inches	Volume: 0.00 bbl	Weight set on Packer: 25000.00 lb
Drill Collar:	Length: 89.00 ft	Diameter: 2.25 inches	Volume: 0.44 bbl	Weight to Pull Loose: 75000.00 lb
			<u>Total Volume: 58.58 bbl</u>	Tool Chased 0.00 ft
Drill Pipe Above KB:	14.00 ft			String Weight: Initial 60000.00 lb
Depth to Top Packer:	4247.00 ft			Final 61000.00 lb
Depth to Bottom Packer:	ft			
Interval between Packers:	65.00 ft			
Tool Length:	92.00 ft			
Number of Packers:	2	Diameter: 6.75 inches		

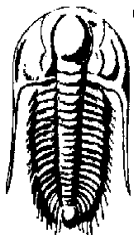
Tool Comments:

## Tool Description

**Length (ft) Serial No. Position Depth (ft) Accum. Lengths**

Tool Description	Length (ft)	Serial No.	Position	Depth (ft)	Accum. Lengths
Change Over Sub	1.00			4221.00	
Shut In Tool	5.00			4226.00	
Hydraulic tool	5.00			4231.00	
Jars	5.00			4236.00	
Safety Joint	2.00			4238.00	
Packer	5.00			4243.00	27.00 Bottom Of Top Packer
Packer	4.00			4247.00	
Stubb	1.00			4248.00	
Recorder	0.00	8365	Inside	4248.00	
Recorder	0.00	8845	Outside	4248.00	
Perforations	28.00			4276.00	
Change Over Sub	1.00			4277.00	
Drill Pipe	31.00			4308.00	
Change Over Sub	1.00			4309.00	
Bullnose	3.00			4312.00	65.00 Bottom Packers & Anchor

**Total Tool Length: 92.00**



**TRILOBITE  
TESTING, INC.**

# DRILL STEM TEST REPORT

**FLUID SUMMARY**

Ritchie Exploration, Inc

**4-16s-36w Wichita,KS**

8100 E 22nd St N #700  
Wichita, KS 67278

**Martin 4D #1**

Job Ticket: 63690

**DST#: 1**

ATTN: John Goldsmith

Test Start: 2017.10.20 @ 16:56:00

## Mud and Cushion Information

Mud Type: Gel Chem

Cushion Type:

Oil API:

0 deg API

Mud Weight: 9.00 lb/gal

Cushion Length:

ft

Water Salinity:

41000 ppm

Viscosity: 54.00 sec/qt

Cushion Volume:

bbbl

Water Loss: 7.99 in<sup>3</sup>

Gas Cushion Type:

Resistivity: ohm.m

Gas Cushion Pressure:

psig

Salinity: 4000.00 ppm

Filter Cake: 1.00 inches

## Recovery Information

Recovery Table

Length ft	Description	Volume bbl
500.00	mcw 15m 85w	6.203
0.00	oil specs in tool	0.000

Total Length: 500.00 ft      Total Volume: 6.203 bbl

Num Fluid Samples: 0

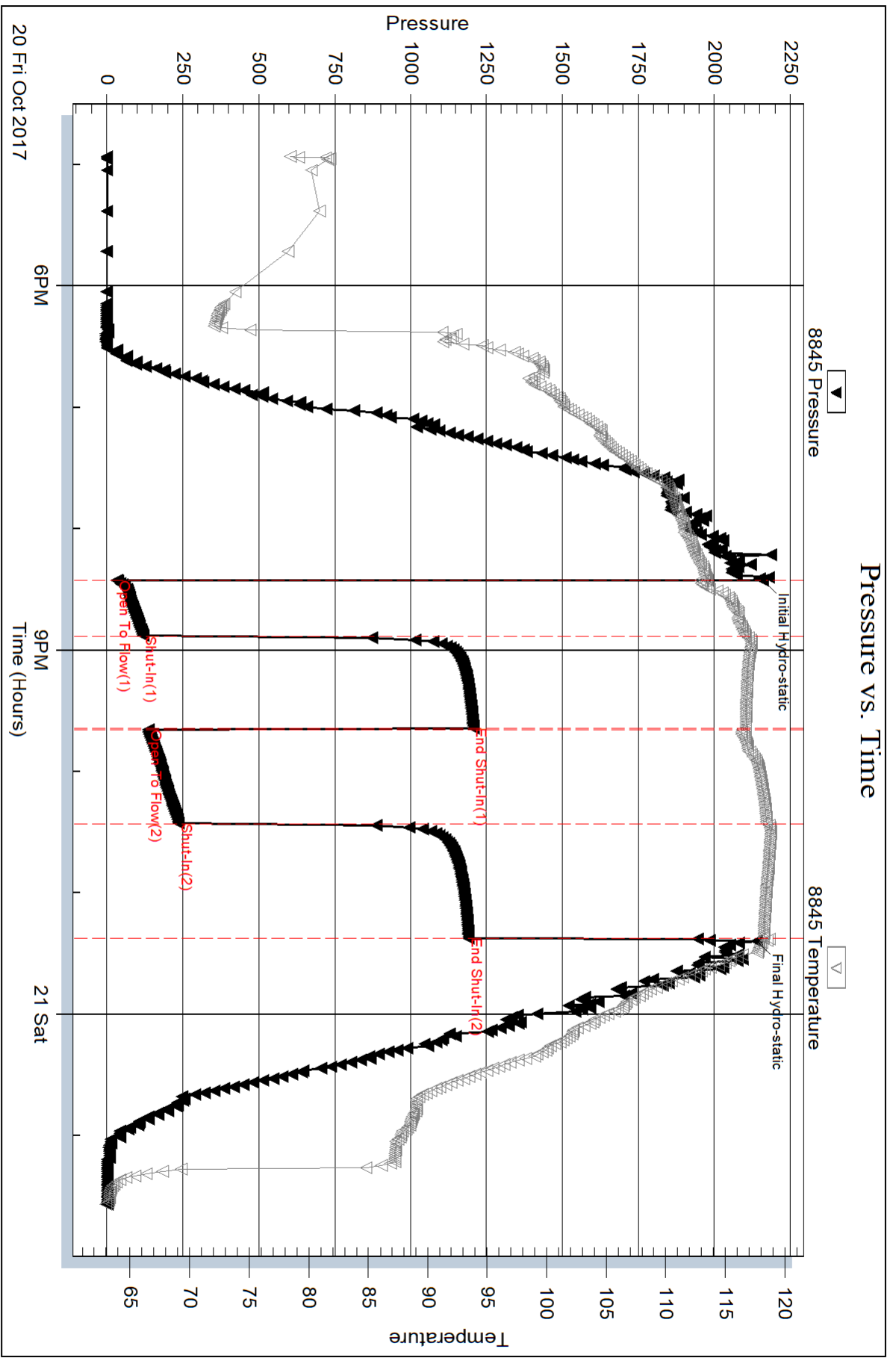
Num Gas Bombs: 0

Serial #:

Laboratory Name:

Laboratory Location:

Recovery Comments: rw is .189 @ 67f = 41000ppm



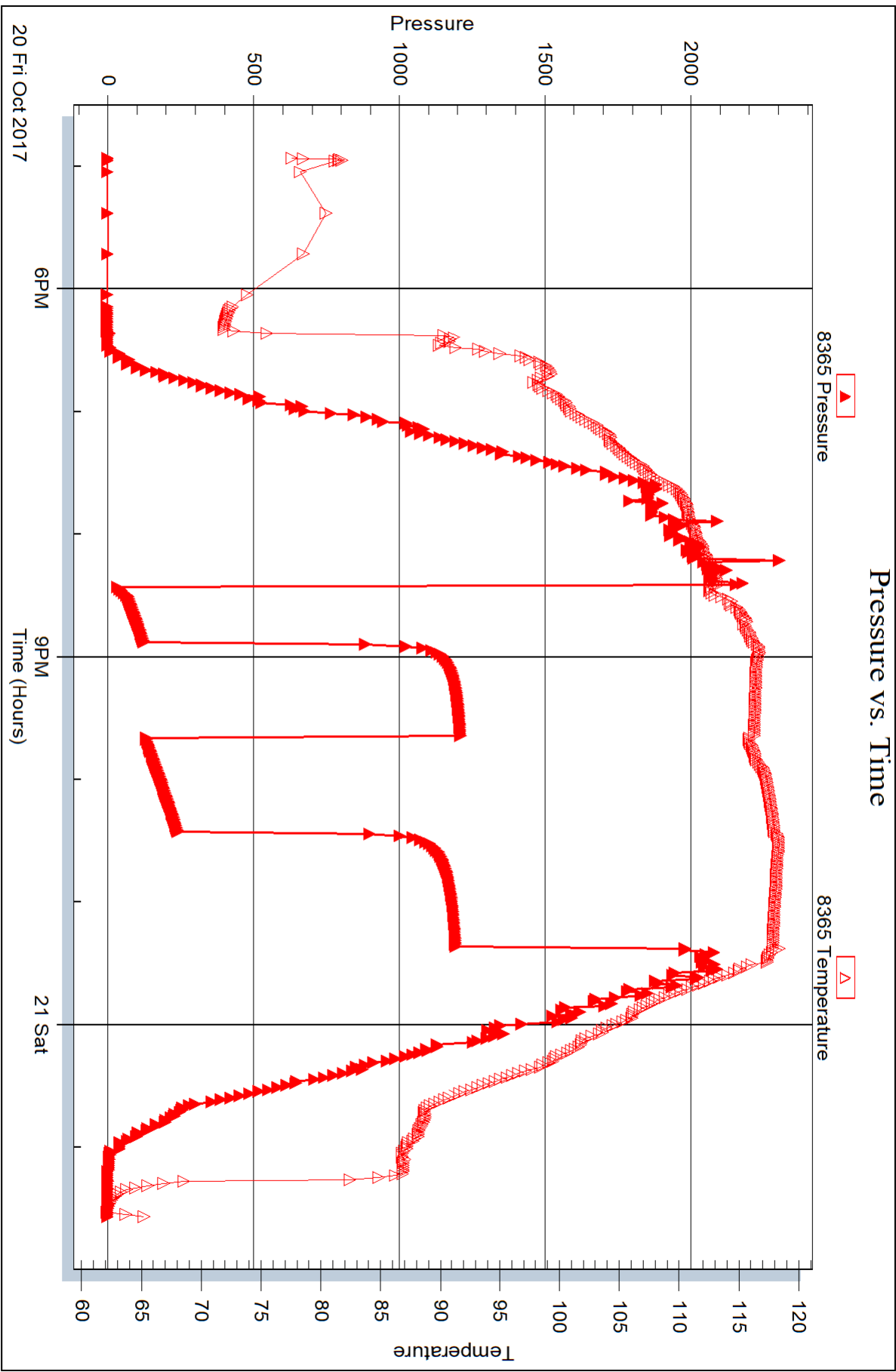
Serial #: 8365

Inside

Ritchie Exploration, Inc

Martin 4D#1

DST Test Number: 1



Triobite Testing, Inc

Ref. No: 63690

Printed: 2017.10.26 @ 13:17:53



## DRILL STEM TEST REPORT

Prepared For: **Ritchie Exploration, Inc**

8100 E 22nd St N #700  
Wichita, KS 67278

ATTN: John Goldsmith

### **Martin 4D #1**

### **4-16s-36w Wichita,KS**

Start Date: 2017.10.21 @ 22:16:00

End Date: 2017.10.22 @ 04:21:45

Job Ticket #: 63691                      DST #: 2

Trilobite Testing, Inc  
PO Box 362 Hays, KS 67601  
ph: 785-625-4778 fax: 785-625-5620

Printed: 2017.10.26 @ 13:17:28





**TRILOBITE  
TESTING, INC.**

# DRILL STEM TEST REPORT

Ritchie Exploration, Inc

**4-16s-36w Wichita, KS**

8100 E 22nd St N #700  
Wichita, KS 67278

**Martin 4D #1**

Job Ticket: 63691

**DST#: 2**

ATTN: John Goldsmith

Test Start: 2017.10.21 @ 22:16:00

## GENERAL INFORMATION:

Formation: **Altamont A**

Deviated: No Whipstock: ft (KB)

Time Tool Opened: 00:12:15

Time Test Ended: 04:21:45

Test Type: Conventional Bottom Hole (Reset)

Tester: Bradley Walter

Unit No: 78

**Interval: 4430.00 ft (KB) To 4460.00 ft (KB) (TVD)**

Reference Elevations: 3300.00 ft (KB)

Total Depth: 4460.00 ft (KB) (TVD)

3288.00 ft (CF)

Hole Diameter: 7.88 inches Hole Condition: Good

KB to GR/CF: 12.00 ft

**Serial #: 8845 Outside**

Press@RunDepth: 26.05 psig @ 4431.00 ft (KB)

Capacity: 8000.00 psig

Start Date: 2017.10.21

End Date:

2017.10.22

Last Calib.: 2017.10.22

Start Time: 22:16:05

End Time:

04:21:44

Time On Btm: 2017.10.22 @ 00:12:00

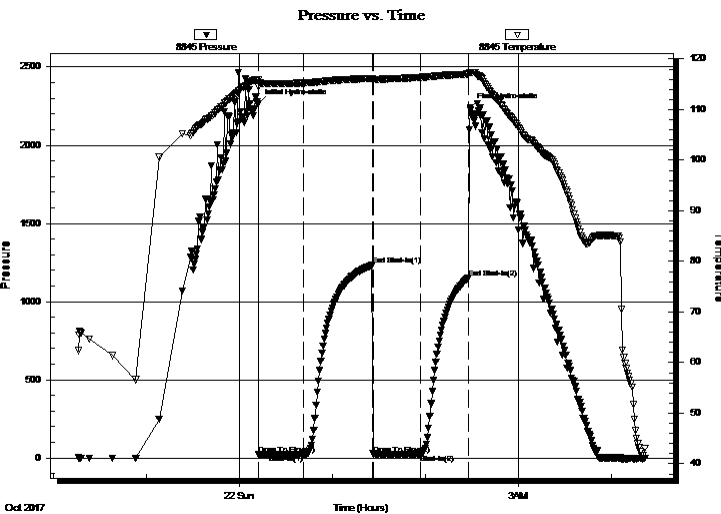
Time Off Btm: 2017.10.22 @ 02:29:00

TEST COMMENT: IF: 1/4" blow, receded to Surface.

IS: No return.

FF: No blow.

FS: No return.



## PRESSURE SUMMARY

Time (Min.)	Pressure (psig)	Temp (deg F)	Annotation
0	2267.65	115.82	Initial Hydro-static
1	22.98	114.46	Open To Flow (1)
30	21.16	115.25	Shut-In(1)
74	1232.61	116.16	End Shut-In(1)
75	24.02	115.93	Open To Flow (2)
105	26.05	116.38	Shut-In(2)
136	1149.79	116.99	End Shut-In(2)
137	2241.18	117.34	Final Hydro-static

## Recovery

Length (ft)	Description	Volume (bbl)
5.00	ocm 30o 70m	0.02
5.00	oil 100o	0.02

\* Recovery from multiple tests

## Gas Rates

	Choke (inches)	Pressure (psig)	Gas Rate (Mcf/d)





**TRILOBITE  
TESTING, INC.**

# DRILL STEM TEST REPORT

**TOOL DIAGRAM**

Ritchie Exploration, Inc

**4-16s-36w Wichita,KS**

8100 E 22nd St N #700  
Wichita, KS 67278

**Martin 4D #1**

Job Ticket: 63691

**DST#: 2**

ATTN: John Goldsmith

Test Start: 2017.10.21 @ 22:16:00

## Tool Information

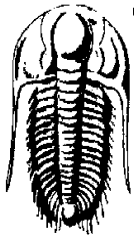
Drill Pipe:	Length: 4336.00 ft	Diameter: 3.80 inches	Volume: 60.82 bbl	Tool Weight: 2500.00 lb
Heavy Wt. Pipe:	Length: 0.00 ft	Diameter: 0.00 inches	Volume: 0.00 bbl	Weight set on Packer: 25000.00 lb
Drill Collar:	Length: 89.00 ft	Diameter: 2.25 inches	Volume: 0.44 bbl	Weight to Pull Loose: 75000.00 lb
			<u>Total Volume: 61.26 bbl</u>	Tool Chased 0.00 ft
Drill Pipe Above KB:	22.00 ft			String Weight: Initial 63000.00 lb
Depth to Top Packer:	4430.00 ft			Final 63000.00 lb
Depth to Bottom Packer:	ft			
Interval between Packers:	30.00 ft			
Tool Length:	57.00 ft			
Number of Packers:	2	Diameter: 6.75 inches		

Tool Comments:

Tool Description	Length (ft)	Serial No.	Position	Depth (ft)	Accum. Lengths
------------------	-------------	------------	----------	------------	----------------

Change Over Sub	1.00			4404.00	
Shut In Tool	5.00			4409.00	
Hydraulic tool	5.00			4414.00	
Jars	5.00			4419.00	
Safety Joint	2.00			4421.00	
Packer	5.00			4426.00	27.00 Bottom Of Top Packer
Packer	4.00			4430.00	
Stubb	1.00			4431.00	
Recorder	0.00	8365	Inside	4431.00	
Recorder	0.00	8845	Outside	4431.00	
Perforations	26.00			4457.00	
Bullnose	3.00			4460.00	30.00 Bottom Packers & Anchor

**Total Tool Length: 57.00**



**TRILOBITE  
TESTING, INC.**

# DRILL STEM TEST REPORT

**FLUID SUMMARY**

Ritchie Exploration, Inc

**4-16s-36w Wichita,KS**

8100 E 22nd St N #700  
Wichita, KS 67278

**Martin 4D #1**

Job Ticket: 63691

**DST#: 2**

ATTN: John Goldsmith

Test Start: 2017.10.21 @ 22:16:00

## Mud and Cushion Information

Mud Type: Gel Chem

Cushion Type:

Oil API:

28 deg API

Mud Weight: 10.00 lb/gal

Cushion Length:

ft

Water Salinity:

0 ppm

Viscosity: 53.00 sec/qt

Cushion Volume:

bbbl

Water Loss: 8.79 in<sup>3</sup>

Gas Cushion Type:

Resistivity: ohm.m

Gas Cushion Pressure:

psig

Salinity: 5000.00 ppm

Filter Cake: 1.00 inches

## Recovery Information

Recovery Table

Length ft	Description	Volume bbl
5.00	ocm 30o 70m	0.025
5.00	oil 100o	0.025

Total Length: 10.00 ft      Total Volume: 0.050 bbl

Num Fluid Samples: 0

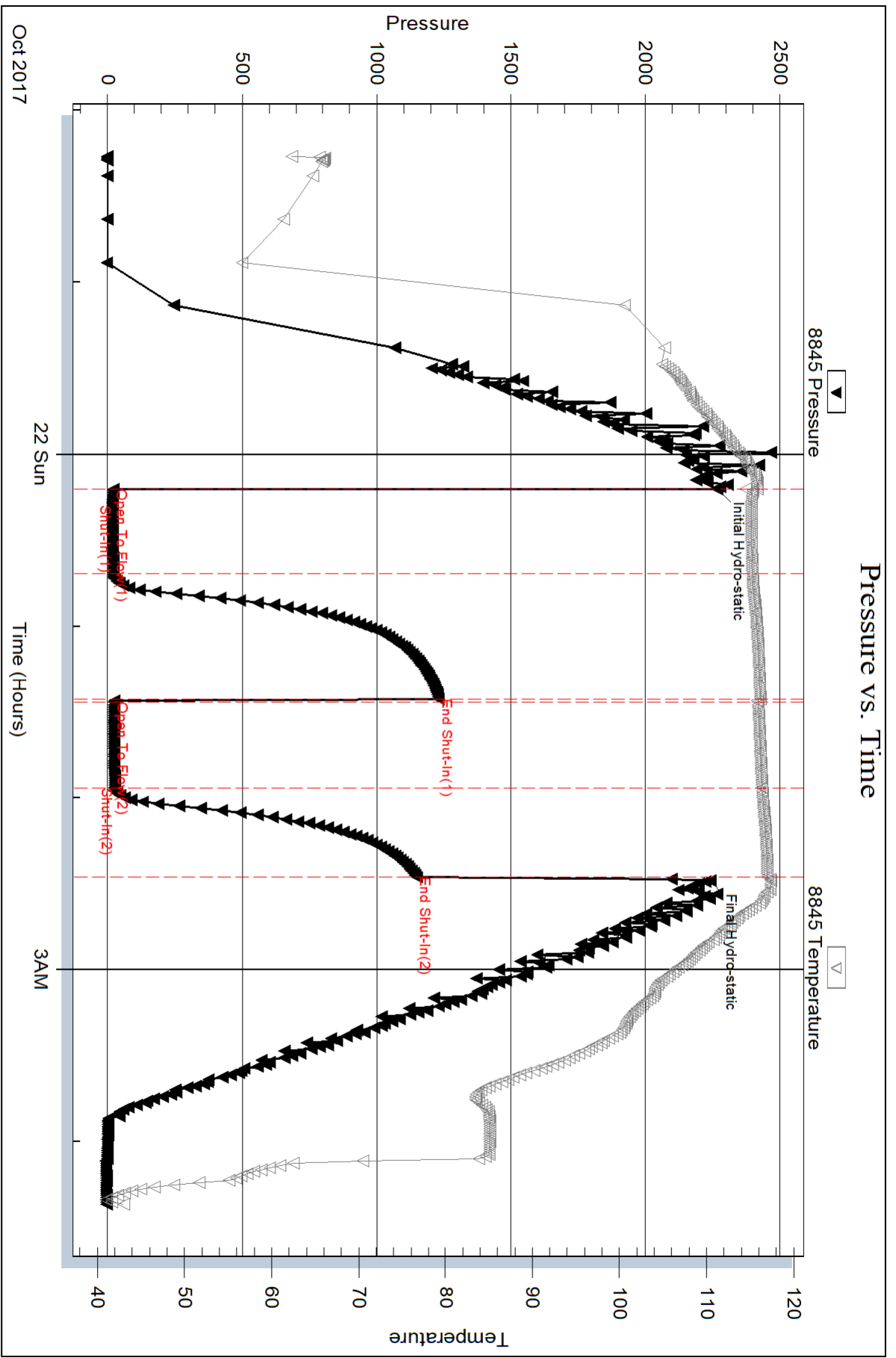
Num Gas Bombs: 0

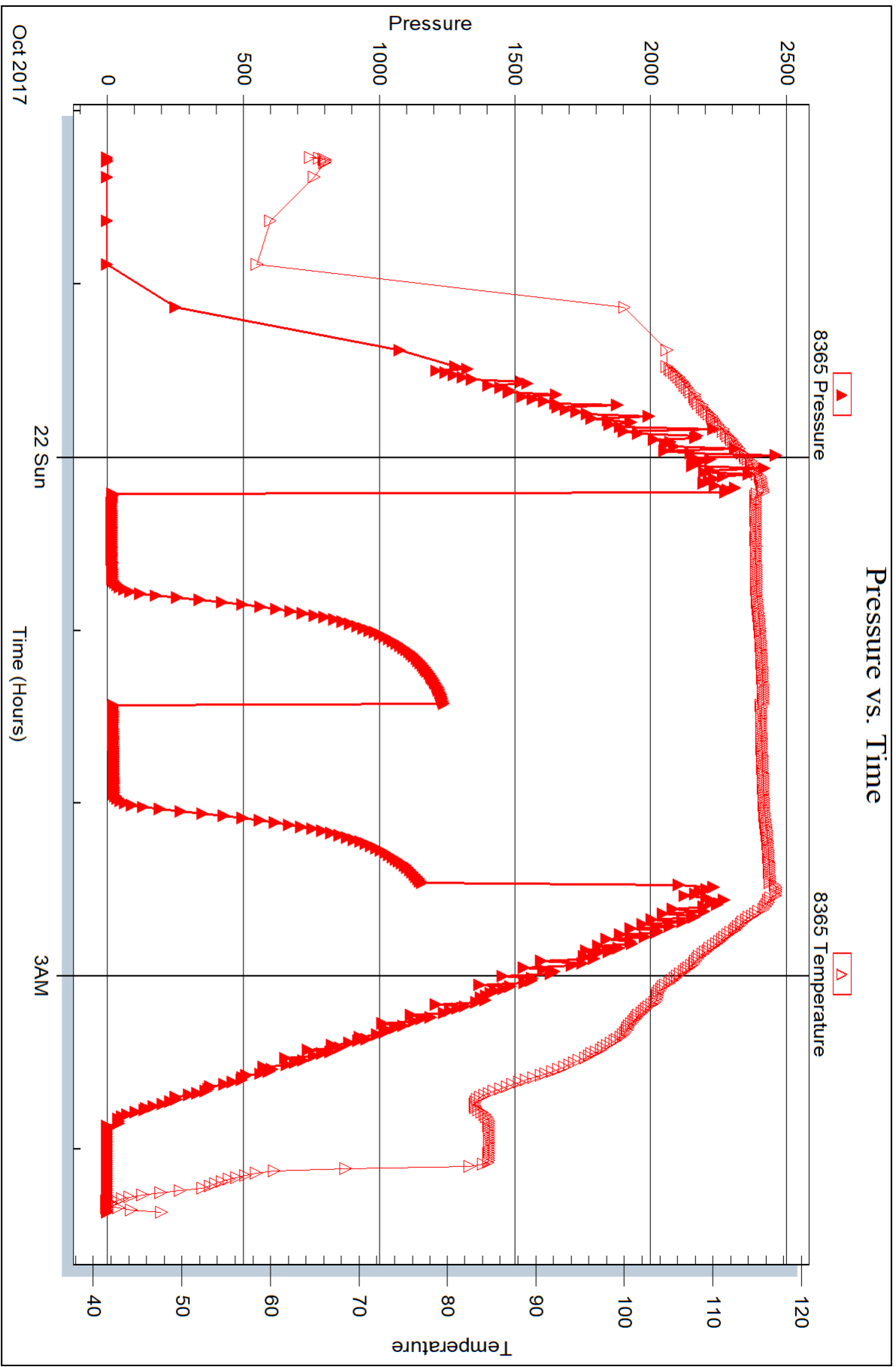
Serial #:

Laboratory Name:

Laboratory Location:

Recovery Comments:







## DRILL STEM TEST REPORT

Prepared For: **Ritchie Exploration, Inc**

8100 E 22nd St N #700  
Wichita, KS 67278

ATTN: John Goldsmith

### **Martin 4D #1**

### **4-16s-36w Wichita,KS**

Start Date: 2017.10.22 @ 12:26:00

End Date: 2017.10.22 @ 18:28:00

Job Ticket #: 63692                      DST #: 3

Trilobite Testing, Inc  
PO Box 362 Hays, KS 67601  
ph: 785-625-4778 fax: 785-625-5620

Printed: 2017.10.26 @ 13:16:37



**TRILOBITE  
TESTING, INC.**

# DRILL STEM TEST REPORT

Ritchie Exploration, Inc

**4-16s-36w Wichita, KS**

8100 E 22nd St N #700  
Wichita, KS 67278

**Martin 4D #1**

Job Ticket: 63692

**DST#: 3**

ATTN: John Goldsmith

Test Start: 2017.10.22 @ 12:26:00

## GENERAL INFORMATION:

Formation: **Altamont B**

Deviated: No Whipstock: ft (KB)

Time Tool Opened: 14:19:15

Time Test Ended: 18:28:00

Test Type: Conventional Bottom Hole (Reset)

Tester: Bradley Walter

Unit No: 78

Interval: **4460.00 ft (KB) To 4477.00 ft (KB) (TVD)**

Reference Elevations: 3300.00 ft (KB)

Total Depth: 4477.00 ft (KB) (TVD)

3288.00 ft (CF)

Hole Diameter: 7.88 inches Hole Condition: Good

KB to GR/CF: 12.00 ft

**Serial #: 8845 Outside**

Press@RunDepth: 58.70 psig @ 4461.00 ft (KB)

Capacity: 8000.00 psig

Start Date: 2017.10.22

End Date:

2017.10.22

Last Calib.:

2017.10.22

Start Time: 12:26:05

End Time:

18:27:59

Time On Btm:

2017.10.22 @ 14:18:45

Time Off Btm:

2017.10.22 @ 16:26:15

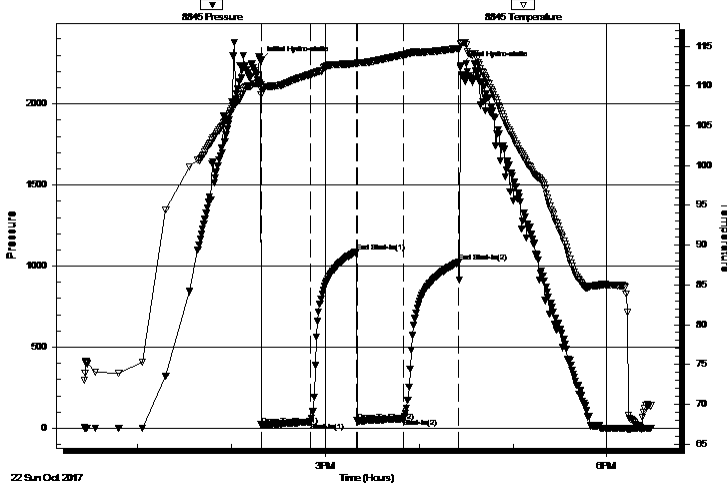
TEST COMMENT: IF: 1/4" blow, died @ 27 min.

IS: No return.

FF: No blow.

FS: No return.

Pressure vs. Time



## PRESSURE SUMMARY

Time (Min.)	Pressure (psig)	Temp (deg F)	Annotation
0	2263.72	110.16	Initial Hydro-static
1	21.50	109.55	Open To Flow (1)
32	39.09	111.43	Shut-In(1)
61	1087.50	112.83	End Shut-In(1)
62	45.22	112.82	Open To Flow (2)
91	58.70	113.92	Shut-In(2)
127	1023.14	114.74	End Shut-In(2)
128	2232.86	115.32	Final Hydro-static

## Recovery

Length (ft)	Description	Volume (bbl)
55.00	w ocm 20w 20o 60m	0.27
30.00	oil 100o	0.15

## Gas Rates

	Choke (inches)	Pressure (psig)	Gas Rate (Mcf/d)

\* Recovery from multiple tests







**TRILOBITE  
TESTING, INC.**

# DRILL STEM TEST REPORT

**TOOL DIAGRAM**

Ritchie Exploration, Inc

**4-16s-36w Wichita,KS**

8100 E 22nd St N #700  
Wichita, KS 67278

**Martin 4D #1**

Job Ticket: 63692

**DST#: 3**

ATTN: John Goldsmith

Test Start: 2017.10.22 @ 12:26:00

## Tool Information

Drill Pipe:	Length: 4369.00 ft	Diameter: 3.80 inches	Volume: 61.29 bbl	Tool Weight: 2500.00 lb
Heavy Wt. Pipe:	Length: 0.00 ft	Diameter: 0.00 inches	Volume: 0.00 bbl	Weight set on Packer: 25000.00 lb
Drill Collar:	Length: 89.00 ft	Diameter: 2.25 inches	Volume: 0.44 bbl	Weight to Pull Loose: 75000.00 lb
			<u>Total Volume: 61.73 bbl</u>	Tool Chased 0.00 ft
Drill Pipe Above KB:	25.00 ft			String Weight: Initial 63000.00 lb
Depth to Top Packer:	4460.00 ft			Final 63000.00 lb
Depth to Bottom Packer:	ft			
Interval between Packers:	17.00 ft			
Tool Length:	44.00 ft			
Number of Packers:	2	Diameter: 6.75 inches		

Tool Comments:

Tool Description	Length (ft)	Serial No.	Position	Depth (ft)	Accum. Lengths
------------------	-------------	------------	----------	------------	----------------

Change Over Sub	1.00			4434.00	
Shut In Tool	5.00			4439.00	
Hydraulic tool	5.00			4444.00	
Jars	5.00			4449.00	
Safety Joint	2.00			4451.00	
Packer	5.00			4456.00	27.00 Bottom Of Top Packer
Packer	4.00			4460.00	
Stubb	1.00			4461.00	
Recorder	0.00	8365	Inside	4461.00	
Recorder	0.00	8845	Outside	4461.00	
Perforations	13.00			4474.00	
Bullnose	3.00			4477.00	17.00 Bottom Packers & Anchor

**Total Tool Length: 44.00**



**TRILOBITE  
TESTING, INC.**

# DRILL STEM TEST REPORT

**FLUID SUMMARY**

Ritchie Exploration, Inc

**4-16s-36w Wichita,KS**

8100 E 22nd St N #700  
Wichita, KS 67278

**Martin 4D #1**

Job Ticket: 63692

**DST#: 3**

ATTN: John Goldsmith

Test Start: 2017.10.22 @ 12:26:00

## Mud and Cushion Information

Mud Type: Gel Chem

Cushion Type:

Oil API:

19 deg API

Mud Weight: 10.00 lb/gal

Cushion Length:

ft

Water Salinity:

0 ppm

Viscosity: 58.00 sec/qt

Cushion Volume:

bbbl

Water Loss: 7.99 in<sup>3</sup>

Gas Cushion Type:

Resistivity: ohm.m

Gas Cushion Pressure:

psig

Salinity: 4000.00 ppm

Filter Cake: 2.00 inches

## Recovery Information

Recovery Table

Length ft	Description	Volume bbbl
55.00	w ocm 20w 20o 60m	0.270
30.00	oil 100o	0.148

Total Length: 85.00 ft      Total Volume: 0.418 bbl

Num Fluid Samples: 0

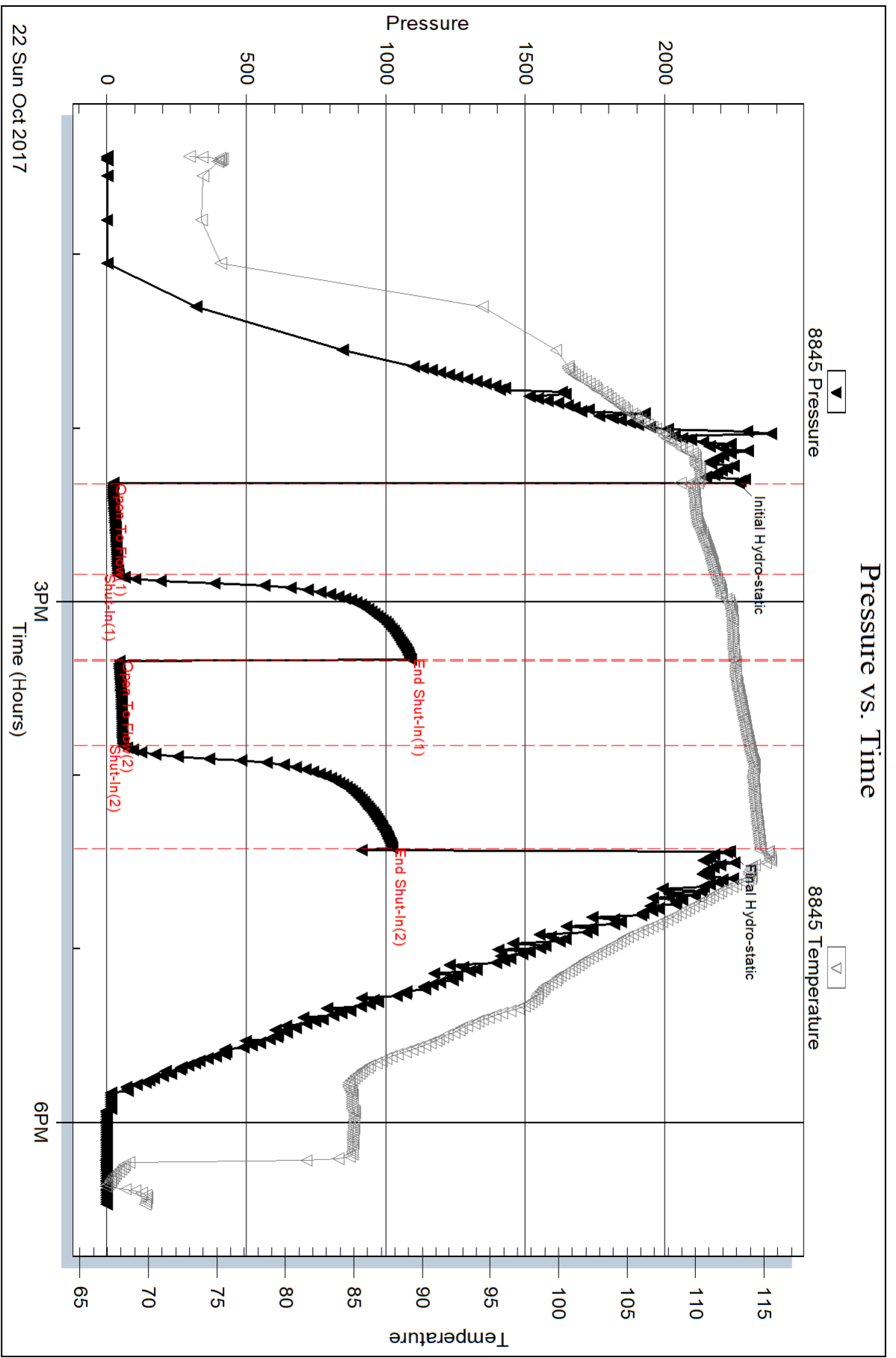
Num Gas Bombs: 0

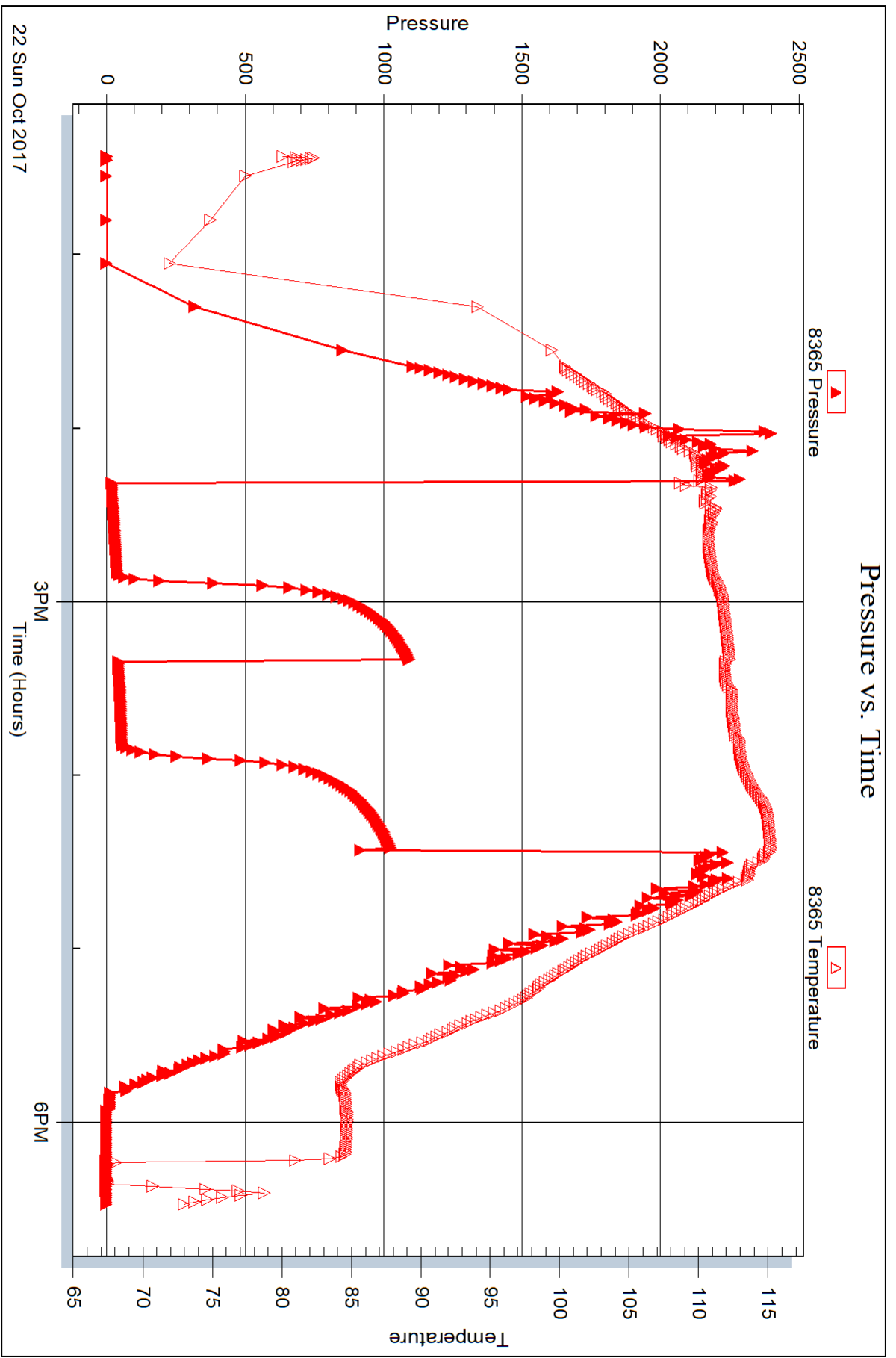
Serial #:

Laboratory Name:

Laboratory Location:

Recovery Comments:







## DRILL STEM TEST REPORT

Prepared For: **Ritchie Exploration, Inc**

8100 E 22nd St N #700  
Wichita, KS 67278

ATTN: John Goldsmith

### **Martin 4D #1**

#### **4-16s-36w Wichita,KS**

Start Date: 2017.10.23 @ 08:42:00

End Date: 2017.10.23 @ 15:50:00

Job Ticket #: 63693                      DST #: 4

Trilobite Testing, Inc  
PO Box 362 Hays, KS 67601  
ph: 785-625-4778 fax: 785-625-5620

Printed: 2017.10.26 @ 13:15:18

Ritchie Exploration, Inc  
4-16s-36w Wichita,KS  
Martin 4D #1  
DST # 4  
Pawnee  
2017.10.23



**TRILOBITE TESTING, INC.**

# DRILL STEM TEST REPORT

Ritchie Exploration, Inc  
 8100 E 22nd St N #700  
 Wichita, KS 67278  
 ATTN: John Goldsmith

**4-16s-36w Wichita, KS**

**Martin 4D #1**

Job Ticket: 63693

**DST#: 4**

Test Start: 2017.10.23 @ 08:42:00

## GENERAL INFORMATION:

Formation: **Pawnee**  
 Deviated: No Whipstock: ft (KB)  
 Time Tool Opened: 11:34:45  
 Time Test Ended: 15:50:00  
 Interval: **4508.00 ft (KB) To 4546.00 ft (KB) (TVD)**  
 Total Depth: 4546.00 ft (KB) (TVD)  
 Hole Diameter: 7.88 inches Hole Condition: Good  
 Test Type: Conventional Bottom Hole (Reset)  
 Tester: Bradley Walter  
 Unit No: 78  
 Reference Elevations: 3300.00 ft (KB)  
 3288.00 ft (CF)  
 KB to GR/CF: 12.00 ft

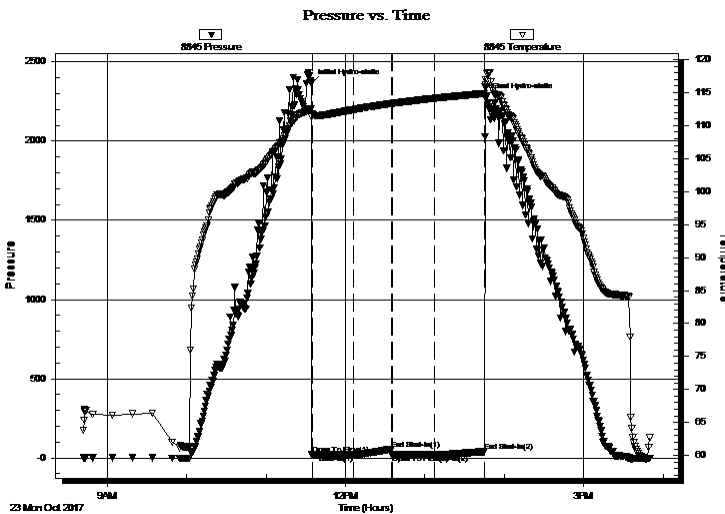
**Serial #: 8845**

**Outside**

Press@RunDepth: 21.21 psig @ 4509.00 ft (KB)  
 Start Date: 2017.10.23 End Date: 2017.10.23  
 Start Time: 08:42:05 End Time: 15:49:59  
 Capacity: 8000.00 psig  
 Last Calib.: 2017.10.23  
 Time On Btm: 2017.10.23 @ 11:34:00  
 Time Off Btm: 2017.10.23 @ 13:46:00

TEST COMMENT: IF: Surface blow, died @ 20 min.  
 IS: No return.  
 FF: No blow.  
 FS: No return.

## PRESSURE SUMMARY



Time (Min.)	Pressure (psig)	Temp (deg F)	Annotation
0	2365.49	112.53	Initial Hydro-static
1	23.08	111.81	Open To Flow (1)
32	20.15	112.41	Shut-In(1)
61	56.60	113.34	End Shut-In(1)
62	20.34	113.35	Open To Flow (2)
94	21.21	114.13	Shut-In(2)
132	40.06	114.87	End Shut-In(2)
132	2275.97	116.21	Final Hydro-static

## Recovery

Length (ft)	Description	Volume (bbl)
5.00	Mud w/oil spots 100m	0.02

\* Recovery from multiple tests

## Gas Rates

Choke (inches)	Pressure (psig)	Gas Rate (Mcf/d)







**TRILOBITE  
TESTING, INC.**

# DRILL STEM TEST REPORT

**TOOL DIAGRAM**

Ritchie Exploration, Inc

**4-16s-36w Wichita,KS**

8100 E 22nd St N #700  
Wichita, KS 67278

**Martin 4D #1**

Job Ticket: 63693

**DST#: 4**

ATTN: John Goldsmith

Test Start: 2017.10.23 @ 08:42:00

## Tool Information

Drill Pipe:	Length: 4402.00 ft	Diameter: 3.80 inches	Volume: 61.75 bbl	Tool Weight: 2500.00 lb
Heavy Wt. Pipe:	Length: 0.00 ft	Diameter: 0.00 inches	Volume: 0.00 bbl	Weight set on Packer: 25000.00 lb
Drill Collar:	Length: 89.00 ft	Diameter: 2.25 inches	Volume: 0.44 bbl	Weight to Pull Loose: 75000.00 lb
			<u>Total Volume: 62.19 bbl</u>	Tool Chased 0.00 ft
Drill Pipe Above KB:	10.00 ft			String Weight: Initial 63000.00 lb
Depth to Top Packer:	4508.00 ft			Final 63000.00 lb
Depth to Bottom Packer:	ft			
Interval between Packers:	38.00 ft			
Tool Length:	65.00 ft			
Number of Packers:	2	Diameter: 6.75 inches		

Tool Comments:

## Tool Description

Tool Description	Length (ft)	Serial No.	Position	Depth (ft)	Accum. Lengths
Change Over Sub	1.00			4482.00	
Shut In Tool	5.00			4487.00	
Hydraulic tool	5.00			4492.00	
Jars	5.00			4497.00	
Safety Joint	2.00			4499.00	
Packer	5.00			4504.00	27.00 Bottom Of Top Packer
Packer	4.00			4508.00	
Stubb	1.00			4509.00	
Recorder	0.00	8365	Inside	4509.00	
Recorder	0.00	8845	Outside	4509.00	
Perforations	34.00			4543.00	
Bullnose	3.00			4546.00	38.00 Bottom Packers & Anchor

**Total Tool Length: 65.00**



**TRILOBITE  
TESTING, INC.**

# DRILL STEM TEST REPORT

**FLUID SUMMARY**

Ritchie Exploration, Inc

**4-16s-36w Wichita,KS**

8100 E 22nd St N #700  
Wichita, KS 67278

**Martin 4D #1**

Job Ticket: 63693

**DST#: 4**

ATTN: John Goldsmith

Test Start: 2017.10.23 @ 08:42:00

## Mud and Cushion Information

Mud Type: Gel Chem

Cushion Type:

Oil API:

0 deg API

Mud Weight: 10.00 lb/gal

Cushion Length:

ft

Water Salinity:

0 ppm

Viscosity: 60.00 sec/qt

Cushion Volume:

bbbl

Water Loss: 8.79 in<sup>3</sup>

Gas Cushion Type:

Resistivity: ohm.m

Gas Cushion Pressure:

psig

Salinity: 56.00 ppm

Filter Cake: 2.00 inches

## Recovery Information

Recovery Table

Length ft	Description	Volume bbl
5.00	Mud w/oil spots 100m	0.025

Total Length: 5.00 ft      Total Volume: 0.025 bbl

Num Fluid Samples: 0

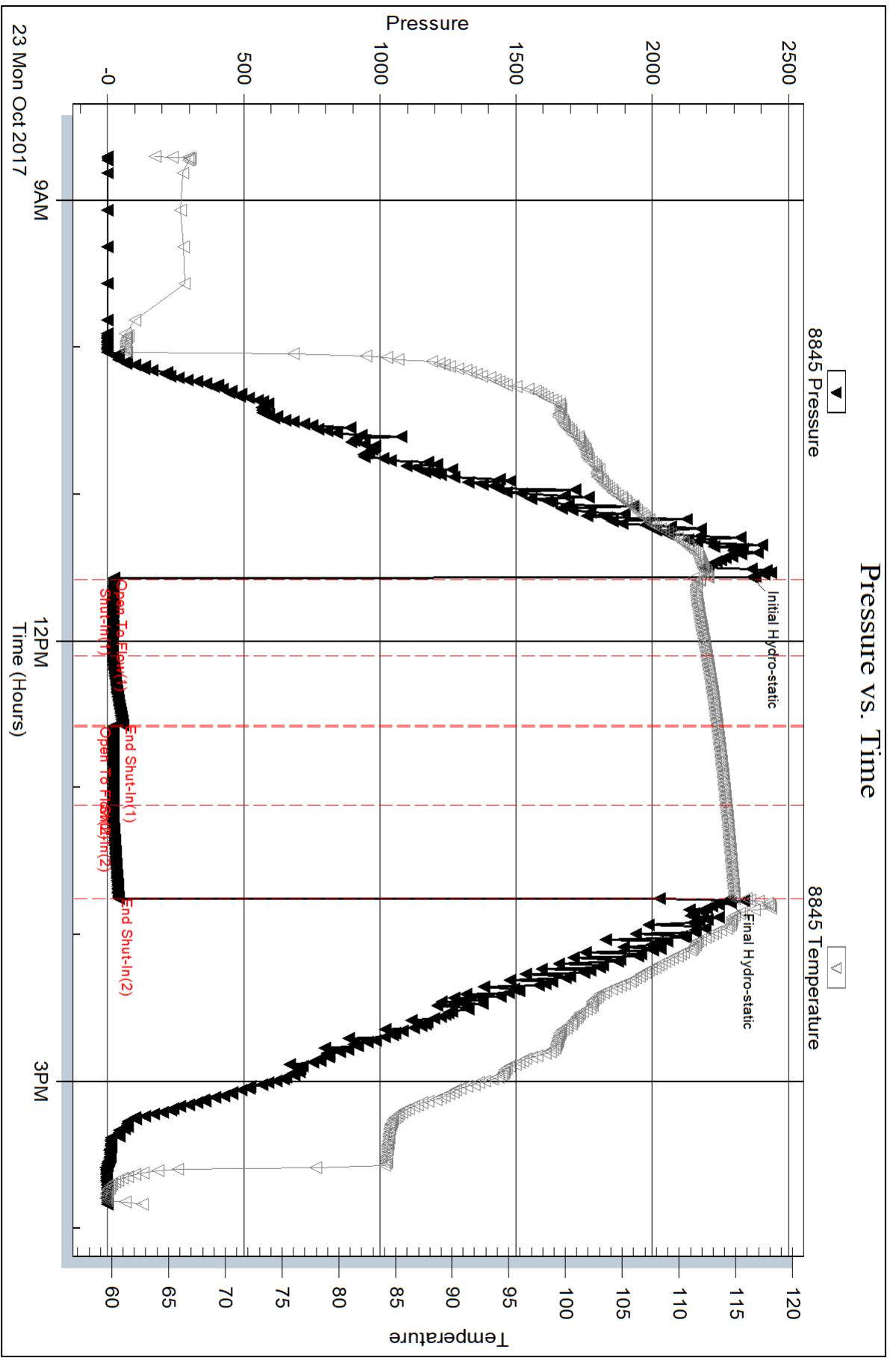
Num Gas Bombs: 0

Serial #:

Laboratory Name:

Laboratory Location:

Recovery Comments:



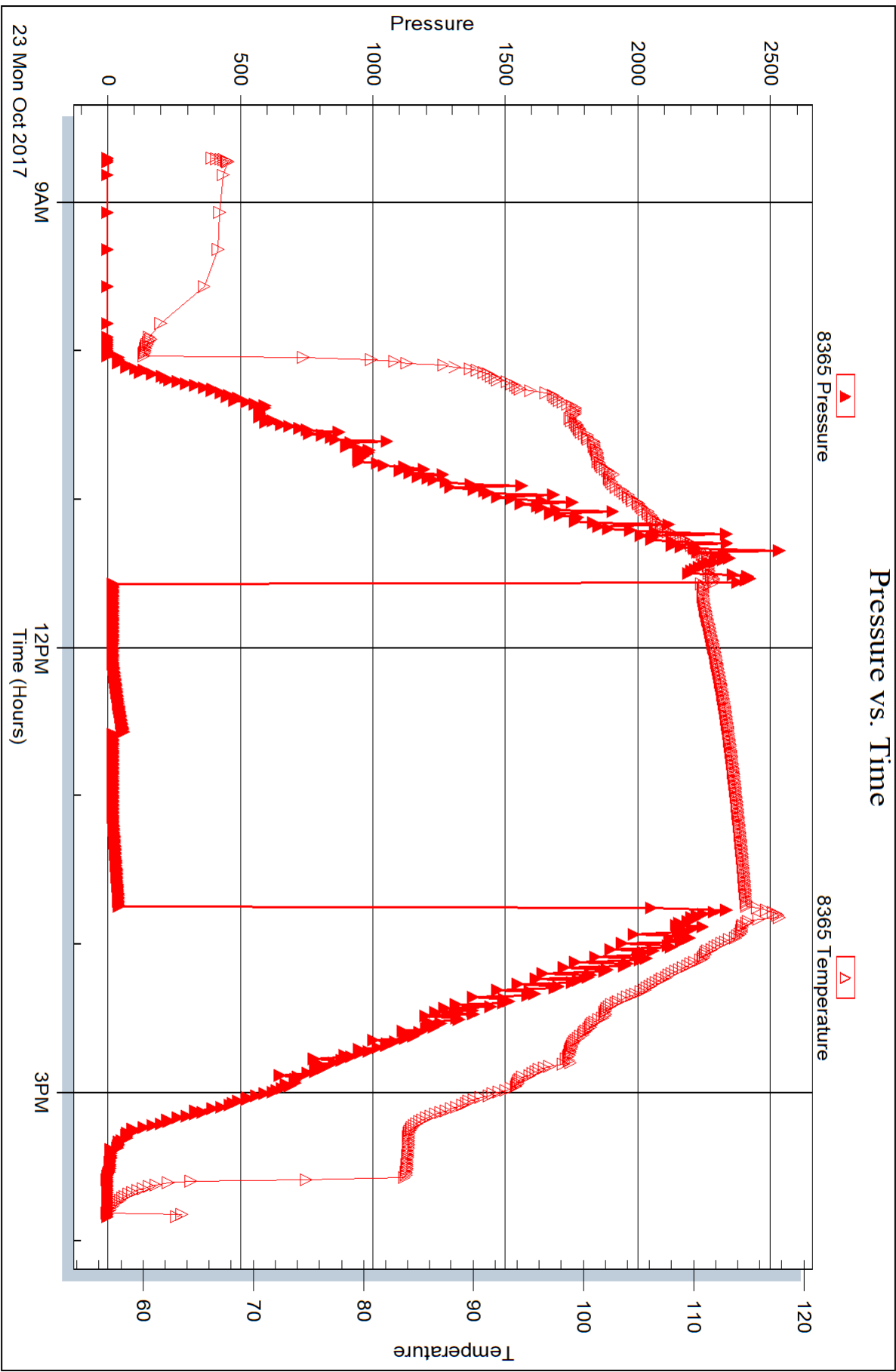
Serial #: 8365

Inside

Ritchie Exploration, Inc

Martin 4D#1

DST Test Number: 4



Trilobite Testing, Inc

Ref. No: 63693

Printed: 2017.10.26 @ 13:15:20



## DRILL STEM TEST REPORT

Prepared For: **Ritchie Exploration, Inc**

8100 E 22nd St N #700  
Wichita, KS 67278

ATTN: John Goldsmith

### **Martin 4D #1**

#### **4-16s-36w Wichita,KS**

Start Date: 2017.10.25 @ 02:57:00

End Date: 2017.10.25 @ 10:07:45

Job Ticket #: 63694                      DST #: 5

Trilobite Testing, Inc  
PO Box 362 Hays, KS 67601  
ph: 785-625-4778 fax: 785-625-5620

Printed: 2017.10.26 @ 13:13:54



**TRILOBITE TESTING, INC.**

# DRILL STEM TEST REPORT

Ritchie Exploration, Inc  
 8100 E 22nd St N #700  
 Wichita, KS 67278  
 ATTN: John Goldsmith

**4-16s-36w Wichita, KS**

**Martin 4D #1**

Job Ticket: 63694

**DST#: 5**

Test Start: 2017.10.25 @ 02:57:00

## GENERAL INFORMATION:

Formation: **Morrow**

Deviated: No Whipstock: ft (KB)

Time Tool Opened: 05:08:00

Time Test Ended: 10:07:45

Test Type: Conventional Bottom Hole (Reset)

Tester: Bradley Walter

Unit No: 78

**Interval: 4733.00 ft (KB) To 4779.00 ft (KB) (TVD)**

Reference Elevations: 3300.00 ft (KB)

Total Depth: 4779.00 ft (KB) (TVD)

3288.00 ft (CF)

Hole Diameter: 7.88 inches Hole Condition: Good

KB to GR/CF: 12.00 ft

**Serial #: 8845 Outside**

Press@RunDepth: 24.78 psig @ 4734.00 ft (KB)

Capacity: 8000.00 psig

Start Date: 2017.10.25

End Date:

2017.10.25

Last Calib.: 2017.10.25

Start Time: 02:57:05

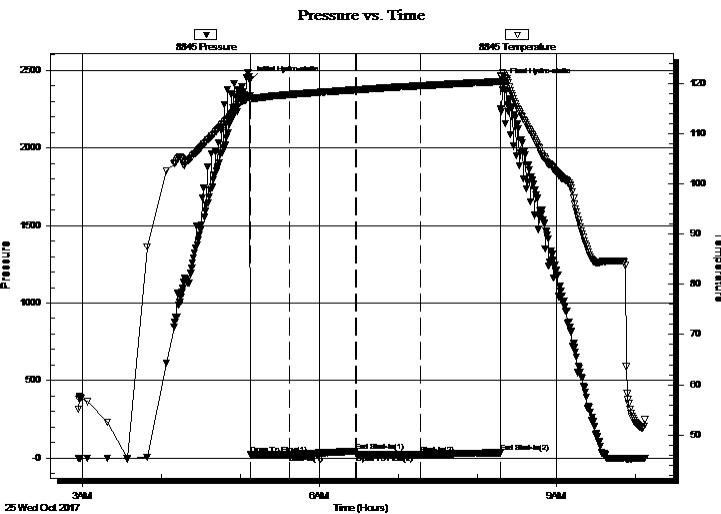
End Time:

10:07:44

Time On Btm: 2017.10.25 @ 05:07:30

Time Off Btm: 2017.10.25 @ 08:19:30

**TEST COMMENT:** IF: 1/2" blow, receded to 1/4".  
 IS: No return  
 FF: No blow after initial surge.  
 FSI: No return.



## PRESSURE SUMMARY

Time (Min.)	Pressure (psig)	Temp (deg F)	Annotation
0	2436.90	117.44	Initial Hydro-static
1	21.93	116.97	Open To Flow (1)
30	23.46	117.73	Shut-In(1)
80	43.58	118.68	End Shut-In(1)
81	23.47	118.68	Open To Flow (2)
129	24.78	119.49	Shut-In(2)
190	33.52	120.32	End Shut-In(2)
192	2425.03	122.15	Final Hydro-static

## Recovery

Length (ft)	Description	Volume (bbl)
15.00	mud 100m (oil spots)	0.07

\* Recovery from multiple tests

## Gas Rates

Choke (inches)	Pressure (psig)	Gas Rate (Mcf/d)





**TRILOBITE  
TESTING, INC.**

# DRILL STEM TEST REPORT

**TOOL DIAGRAM**

Ritchie Exploration, Inc

**4-16s-36w Wichita,KS**

8100 E 22nd St N #700  
Wichita, KS 67278

**Martin 4D #1**

Job Ticket: 63694

**DST#: 5**

ATTN: John Goldsmith

Test Start: 2017.10.25 @ 02:57:00

## Tool Information

Drill Pipe:	Length: 4625.00 ft	Diameter: 3.80 inches	Volume: 64.88 bbl	Tool Weight:	2500.00 lb
Heavy Wt. Pipe:	Length: 0.00 ft	Diameter: 0.00 inches	Volume: 0.00 bbl	Weight set on Packer:	25000.00 lb
Drill Collar:	Length: 89.00 ft	Diameter: 2.25 inches	Volume: 0.44 bbl	Weight to Pull Loose:	90000.00 lb
			<u>Total Volume: 65.32 bbl</u>	Tool Chased	0.00 ft
Drill Pipe Above KB:	8.00 ft			String Weight: Initial	65000.00 lb
Depth to Top Packer:	4733.00 ft			Final	65000.00 lb
Depth to Bottom Packer:	ft				
Interval between Packers:	46.00 ft				
Tool Length:	73.00 ft				
Number of Packers:	2	Diameter: 6.75 inches			

Tool Comments:

## Tool Description

Tool Description	Length (ft)	Serial No.	Position	Depth (ft)	Accum. Lengths
Change Over Sub	1.00			4707.00	
Shut In Tool	5.00			4712.00	
Hydraulic tool	5.00			4717.00	
Jars	5.00			4722.00	
Safety Joint	2.00			4724.00	
Packer	5.00			4729.00	27.00 Bottom Of Top Packer
Packer	4.00			4733.00	
Stubb	1.00			4734.00	
Recorder	0.00	8365	Inside	4734.00	
Recorder	0.00	8845	Outside	4734.00	
Perforations	9.00			4743.00	
Change Over Sub	1.00			4744.00	
Drill Pipe	31.00			4775.00	
Change Over Sub	1.00			4776.00	
Bullnose	3.00			4779.00	46.00 Bottom Packers & Anchor

**Total Tool Length: 73.00**





**TRILOBITE  
TESTING, INC.**

# DRILL STEM TEST REPORT

**FLUID SUMMARY**

Ritchie Exploration, Inc

**4-16s-36w Wichita,KS**

8100 E 22nd St N #700  
Wichita, KS 67278

**Martin 4D #1**

Job Ticket: 63694

**DST#: 5**

ATTN: John Goldsmith

Test Start: 2017.10.25 @ 02:57:00

## Mud and Cushion Information

Mud Type: Gel Chem

Cushion Type:

Oil API:

0 deg API

Mud Weight: 9.00 lb/gal

Cushion Length:

ft

Water Salinity:

0 ppm

Viscosity: 54.00 sec/qt

Cushion Volume:

bbbl

Water Loss: 8.79 in<sup>3</sup>

Gas Cushion Type:

Resistivity: ohm.m

Gas Cushion Pressure:

psig

Salinity: 6300.00 ppm

Filter Cake: 2.00 inches

## Recovery Information

Recovery Table

Length ft	Description	Volume bbl
15.00	mud 100m (oil spots)	0.074

Total Length: 15.00 ft      Total Volume: 0.074 bbl

Num Fluid Samples: 0

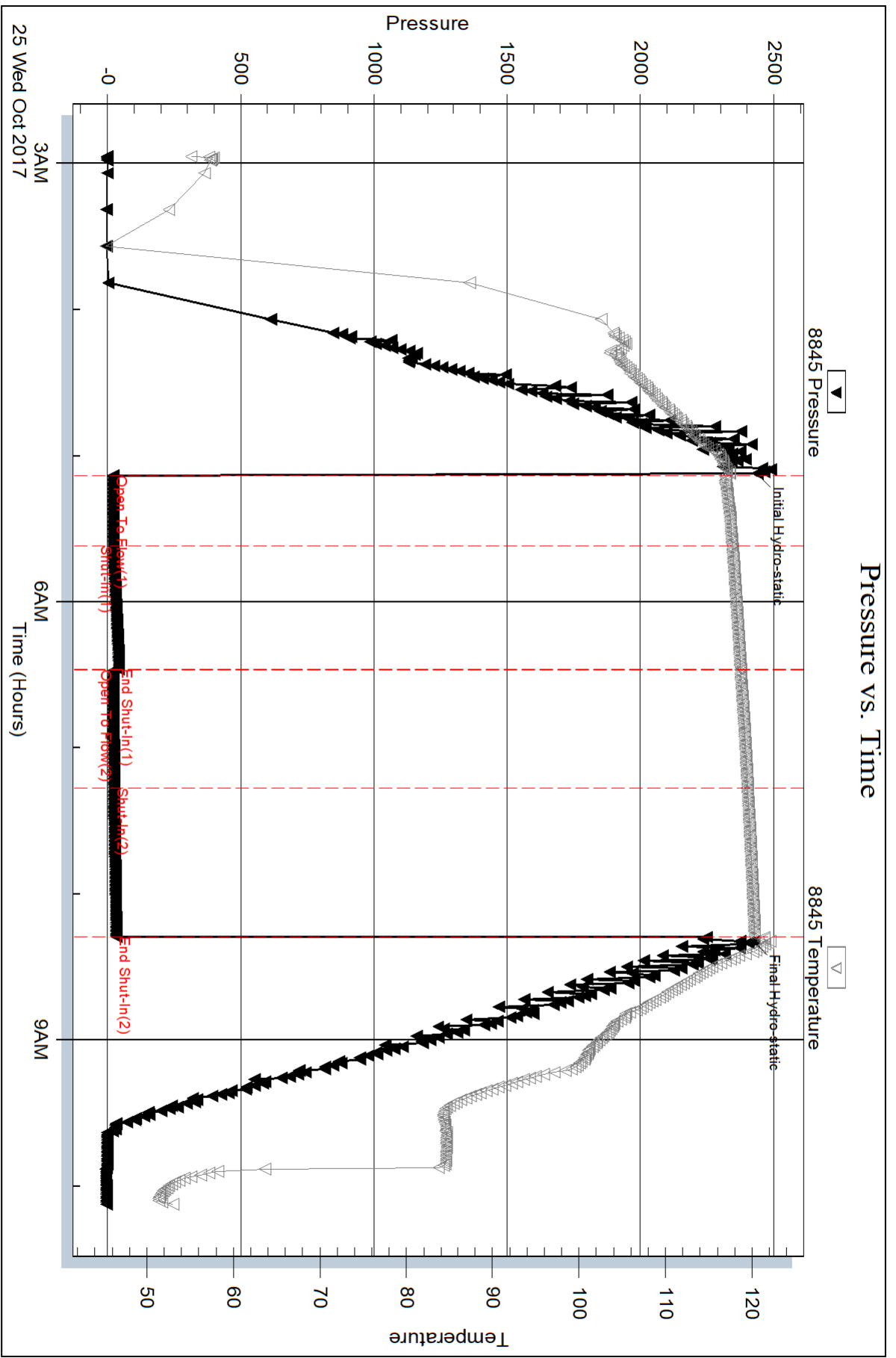
Num Gas Bombs: 0

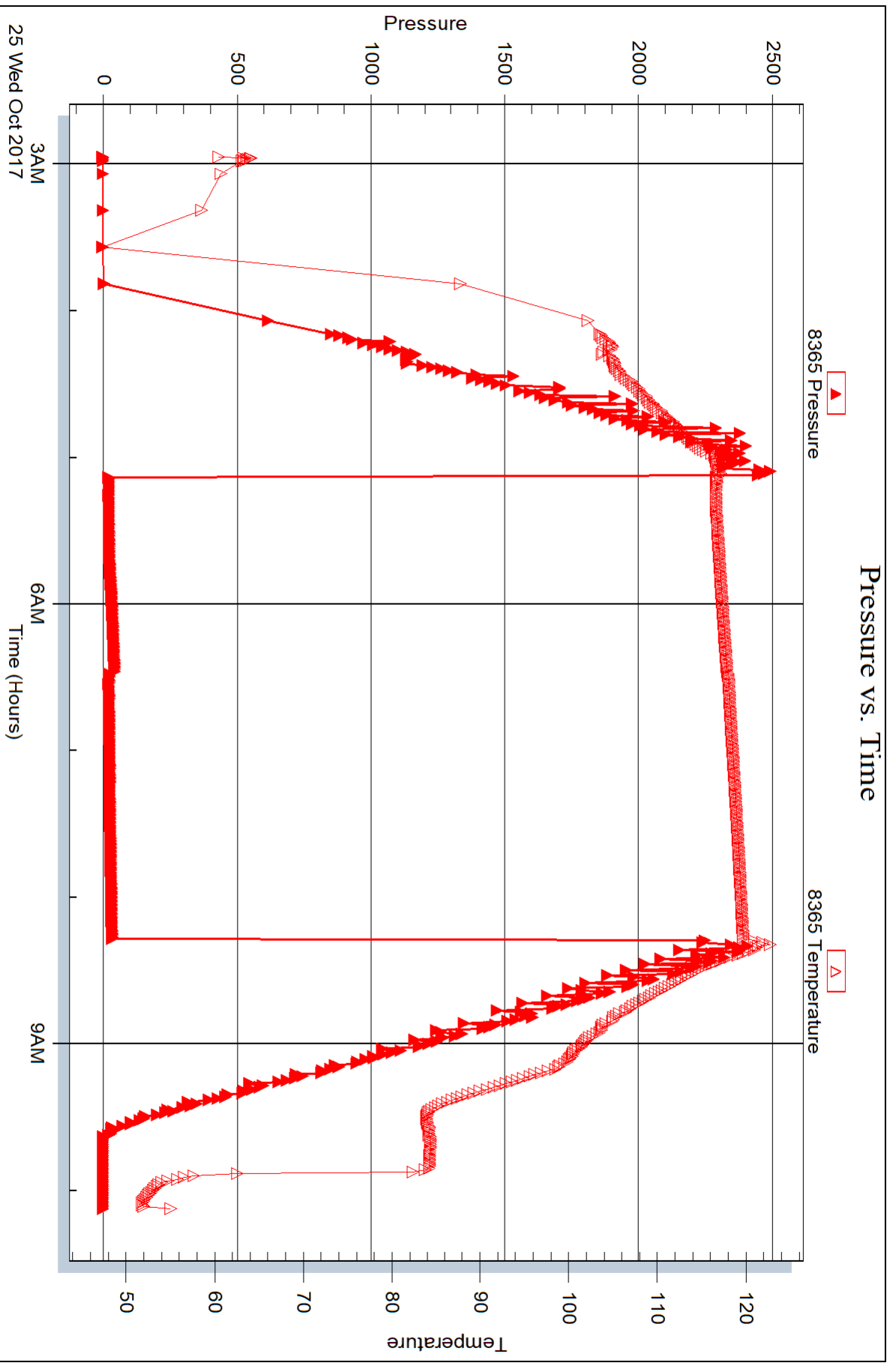
Serial #:

Laboratory Name:

Laboratory Location:

Recovery Comments:







# TRILOBITE TESTING INC.

1515 Commerce Parkway • Hays, Kansas 67601

## Test Ticket

NO. **64690**

Well Name & No. Martin 4D #1 Test No. 1 Date 10/21/2017  
 Company Ritchie Exploration, Inc Elevation 5300 KB 3288 GL  
 Address 8100 E 22<sup>nd</sup> St N #700 Wichita, KS 67278  
 Co. Rep / Geo. John Goldsmith Rig Sterling #5  
 Location: Sec. 4 Twp. 16S Rge. 36W Co. Wichita State Ks

Interval Tested 4247-4312 Zone Tested LKC I-J  
 Anchor Length 65' Drill Pipe Run 4145 Mud Wt. 9.3  
 Top Packer Depth 4242 Drill Collars Run 89 Vis 54  
 Bottom Packer Depth 4247 Wt. Pipe Run Ø WL 8.0  
 Total Depth 4312 Chlorides 4,000 ppm System LCM 2<sup>#</sup>

Blow Description IF BOB@ 10 min.  
ISI no return.  
FF BOB@ 22 min  
ISI No return.

Rec	Feet of	%gas	%oil	%water	%mud
<u>500</u>	<u>mcw</u>			<u>85</u>	<u>15</u>
	<u>oil sands in tool</u>				

Rec Total 500 BHT 118 Gravity — API RW 1189 @ 67 °F Chlorides 41000 ppm

(A) Initial Hydrostatic <u>2159</u>	<input checked="" type="checkbox"/> Test <u>1150</u>	T-On Location <u>1345</u>
(B) First Initial Flow <u>33</u>	<input checked="" type="checkbox"/> Jars <u>250</u>	T-Started <u>1646</u>
(C) First Final Flow <u>119</u>	<input checked="" type="checkbox"/> Safety Joint <u>75</u>	T-Open <u>2024</u>
(D) Initial Shut-In <u>1208</u>	<input checked="" type="checkbox"/> Circ Sub	T-Pulled <u>2324</u>
(E) Second Initial Flow <u>137</u>	<input type="checkbox"/> Hourly Standby	T-Out <u>0135 10/21</u>
(F) Second Final Flow <u>236</u>	<input checked="" type="checkbox"/> Mileage <u>99 RT</u> <u>73.50</u>	Comments
(G) Final Shut-In <u>1193</u>	<input type="checkbox"/> Sampler	
(H) Final Hydrostatic <u>2139</u>	<input type="checkbox"/> Straddle	
	<input type="checkbox"/> Shale Packer	<input type="checkbox"/> Ruined Shale Packer
Initial Open <u>30</u>	<input type="checkbox"/> Extra Packer	<input type="checkbox"/> Ruined Packer
Initial Shut-In <u>45</u>	<input type="checkbox"/> Extra Recorder	<input type="checkbox"/> Extra Copies
Final Flow <u>45</u>	<input type="checkbox"/> Day Standby	Sub Total <u>0</u>
Final Shut-In <u>60</u>	<input type="checkbox"/> Accessibility	Total <u>1548.50</u>
	Sub Total <u>1548.50</u>	MP/DST Disc't

Approved By \_\_\_\_\_ Our Representative [Signature]

TriLOBITE Testing Inc. shall not be liable for damaged of any kind of the property or personnel of the one for whom a test is made, or for any loss suffered or sustained, directly or indirectly, through the use of its equipment, or its statements or opinion concerning the results of any test, tools lost or damaged in the hole shall be paid for at cost by the party for whom the test is made.



# TRILOBITE TESTING INC.

1515 Commerce Parkway • Hays, Kansas 67601

## Test Ticket

NO. **64691**

Well Name & No. Martin 4D #1 Test No. 2 Date 10/22/2017  
 Company Ritchie Exploration, Inc Elevation 3300 KB 3288 GL  
 Address 8100 E 22nd St N #700 Wichita, KS 67278  
 Co. Rep / Geo. John Goldsmith Rig Sterling #5  
 Location: Sec. 4 Twp. 16 S Rge. 36 W Co. Wichita State Ks

Interval Tested 4430 4460 Zone Tested Altamont A  
 Anchor Length 30' Drill Pipe Run 4336 Mud Wt. 9.5  
 Top Packer Depth 4425 Drill Collars Run 89 Vis 53  
 Bottom Packer Depth 4430 Wt. Pipe Run 0 WL 8.8  
 Total Depth 4460 Chlorides 5000 ppm System LCM 2 #  
 Blow Description IF: 1/4" blow, receded to surface.  
ISF: No return.  
FF: No blow  
FSI: No return.

Rec	Feet of	%gas	%oil	%water	%mud
<u>5</u>	<u>Oil</u>		<u>100</u>		
<u>5</u>	<u>OCM</u>		<u>30</u>		<u>70</u>

Rec Total 10 BHT 117 Gravity 28 API RW — @ — F Chlorides — ppm

(A) Initial Hydrostatic <u>2268</u>	<input checked="" type="checkbox"/> Test <u>1150</u>	T-On Location <u>1015</u>
(B) First Initial Flow <u>23</u>	<input checked="" type="checkbox"/> Jars <u>250</u>	T-Started <u>1016</u>
(C) First Final Flow <u>21</u>	<input checked="" type="checkbox"/> Safety Joint <u>75</u>	T-Open <u>00420012</u>
(D) Initial Shut-In <u>1233</u>	<input checked="" type="checkbox"/> Circ Sub <u>WC</u>	T-Pulled <u>0227</u>
(E) Second Initial Flow <u>24</u>	<input type="checkbox"/> Hourly Standby	T-Out <u>0422</u>
(F) Second Final Flow <u>26</u>	<input checked="" type="checkbox"/> Mileage <u>98 RT 73.50</u>	Comments
(G) Final Shut-In <u>1150</u>	<input type="checkbox"/> Sampler	
(H) Final Hydrostatic <u>2241</u>	<input type="checkbox"/> Straddle	
	<input type="checkbox"/> Shale Packer	<input type="checkbox"/> Ruined Shale Packer
	<input type="checkbox"/> Extra Packer	<input type="checkbox"/> Ruined Packer
Initial Open <u>30</u>	<input type="checkbox"/> Extra Recorder	Sub Total <u>0</u>
Initial Shut-In <u>45</u>	<input type="checkbox"/> Day Standby	Total <u>1548.50</u>
Final Flow <u>30</u>	<input type="checkbox"/> Accessibility	MP/DST Disc't
Final Shut-In <u>30</u>	Sub Total <u>1548.50</u>	

Approved By \_\_\_\_\_ Our Representative [Signature]  
 TriLOBITE TESTING Inc. shall not be liable for damaged of any kind of the property or personnel of the one for whom a test is made, or for any loss suffered or sustained, directly or indirectly, through the use of its equipment, or its statements or opinion concerning the results of any test, tools lost or damaged in the hole shall be paid for at cost by the party for whom the test is made.



# TRILOBITE TESTING INC.

1515 Commerce Parkway • Hays, Kansas 67601

## Test Ticket

NO. **64692**

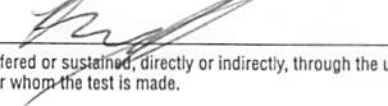
Well Name & No. Martin 4D #1 Test No. 3 Date 10/22/2017  
 Company Ritchie Exploration, Inc Elevation 3300 KB 3288 GL  
 Address 8100 E 22<sup>nd</sup> St N #700 Wichita, Ks 67278  
 Co. Rep / Geo. John Goldsmith Rig Sterling #5  
 Location: Sec. 4 Twp. 16s Rge. 36 W Co. Wichita State Ks

Interval Tested 4460-4477 Zone Tested Altamont B  
 Anchor Length 17 Drill Pipe Run 4369 Mud Wt. 9.5  
 Top Packer Depth 4455 Drill Collars Run 89 Vis 58  
 Bottom Packer Depth 4460 Wt. Pipe Run 0 WL 8.0  
 Total Depth 4477 Chlorides 5500 ppm System LCM 1#  
 Blow Description IF: 1/4" blow, died @ 27min.  
ISI: No return.  
FF: No blow.  
FSI: No return.

Rec	Feet of	%gas	%oil	%water	%mud
<u>30</u>	<u>Oil</u>		<u>100</u>		
<u>55</u>	<u>WOCM</u>		<u>20</u>	<u>20</u>	<u>60</u>

Rec Total 85 BHT 115 Gravity 19 API RW - @ - °F Chlorides - ppm

(A) Initial Hydrostatic <u>2264</u>	<input checked="" type="checkbox"/> Test <u>1150</u>	T-On Location <u>1200</u>
(B) First Initial Flow <u>22</u>	<input checked="" type="checkbox"/> Jars <u>250</u>	T-Started <u>1226</u>
(C) First Final Flow <u>39</u>	<input checked="" type="checkbox"/> Safety Joint <u>75</u>	T-Open <u>1416</u>
(D) Initial Shut-In <u>1088</u>	<input checked="" type="checkbox"/> Circ Sub <u>N/C</u>	T-Pulled <u>1616</u>
(E) Second Initial Flow <u>45</u>	<input type="checkbox"/> Hourly Standby	T-Out <u>1828</u>
(F) Second Final Flow <u>59</u>	<input checked="" type="checkbox"/> Mileage <u>96 RT</u> <u>73.50</u>	Comments _____
(G) Final Shut-In <u>1023</u>	<input type="checkbox"/> Sampler	
(H) Final Hydrostatic <u>2233</u>	<input type="checkbox"/> Straddle	<input type="checkbox"/> Ruined Shale Packer
Initial Open <u>30</u>	<input type="checkbox"/> Shale Packer	<input type="checkbox"/> Ruined Packer
Initial Shut-In <u>30</u>	<input type="checkbox"/> Extra Packer	<input type="checkbox"/> Extra Copies
Final Flow <u>30</u>	<input type="checkbox"/> Extra Recorder	Sub Total <u>0</u>
Final Shut-In <u>30</u>	<input type="checkbox"/> Day Standby	Total <u>1548.50</u>
	<input type="checkbox"/> Accessibility	MP/DST Disc't _____
	Sub Total <u>1548.50</u>	

Approved By \_\_\_\_\_ Our Representative 

TriLOBITE Testing Inc. shall not be liable for damaged of any kind of the property or personnel of the one for whom a test is made, or for any loss suffered or sustained, directly or indirectly, through the use of its equipment, or its statements or opinion concerning the results of any test, tools lost or damaged in the hole shall be paid for at cost by the party for whom the test is made.



# TRILOBITE TESTING INC.

1515 Commerce Parkway • Hays, Kansas 67601

## Test Ticket

NO. **64693**

Well Name & No. Martin 4D #1 Test No. 4 Date 10/23/2017  
 Company Ritchie Exploration, Inc Elevation 3300 KB 3288 GL  
 Address 8100 E 22<sup>nd</sup> St N #700 Wichita, KS 67278  
 Co. Rep / Geo. John Goldsmith Rig Sterling #5  
 Location: Sec. 4 Twp. 16S Rge. 36W Co. Wichita State KS

Interval Tested 4508 - 4546 Zone Tested Pawnee  
 Anchor Length 38' Drill Pipe Run 4408 Mud Wt. 9.5  
 Top Packer Depth 4503 Drill Collars Run 89 Vis 60  
 Bottom Packer Depth 4508 Wt. Pipe Run Ø WL 8.8  
 Total Depth 4546 Chlorides 5600 ppm System LCM 2#  
 Blow Description IT Surface blow, died @ 20 min.  
ISL No return.  
FF No blow  
FSL No return.

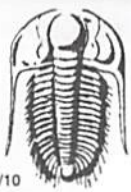
Rec	Feet of	%gas	%oil	%water	%mud
<u>5</u>	<u>MOD w/oil spots</u>			<u>100</u>	
Rec	Feet of	%gas	%oil	%water	%mud
Rec	Feet of	%gas	%oil	%water	%mud
Rec	Feet of	%gas	%oil	%water	%mud
Rec	Feet of	%gas	%oil	%water	%mud

Rec Total 5 BHT 115 Gravity — API RW — @ — °F Chlorides — ppm

(A) Initial Hydrostatic <u>2365</u>	<input checked="" type="checkbox"/> Test <u>1150</u>	T-On Location <u>0740</u>
(B) First Initial Flow <u>23</u>	<input checked="" type="checkbox"/> Jars <u>250</u>	T-Started <u>0842</u>
(C) First Final Flow <u>20</u>	<input checked="" type="checkbox"/> Safety Joint <u>75</u>	T-Open <u>1135</u>
(D) Initial Shut-In <u>57</u>	<input checked="" type="checkbox"/> Circ Sub	T-Pulled <u>1335</u>
(E) Second Initial Flow <u>20</u>	<input type="checkbox"/> Hourly Standby	T-Out <u>1550</u>
(F) Second Final Flow <u>21</u>	<input checked="" type="checkbox"/> Mileage <u>98RT</u> <u>73.50</u>	Comments
(G) Final Shut-In <u>40</u>	<input type="checkbox"/> Sampler	
(H) Final Hydrostatic <u>2276</u>	<input type="checkbox"/> Straddle	
	<input type="checkbox"/> Shale Packer	<input type="checkbox"/> Ruined Shale Packer
	<input type="checkbox"/> Extra Packer	<input type="checkbox"/> Ruined Packer
	<input type="checkbox"/> Extra Recorder	<input type="checkbox"/> Extra Copies
Initial Open <u>30</u>	<input type="checkbox"/> Day Standby	Sub Total <u>0</u>
Initial Shut-In <u>30</u>	<input type="checkbox"/> Accessibility	Total <u>1548.50</u>
Final Flow <u>30</u>	Sub Total <u>1548.50</u>	MP/DST Disc't
Final Shut-In <u>30</u>		

Approved By \_\_\_\_\_ Our Representative [Signature]

TriLOBITE TESTING INC. shall not be liable for damaged of any kind of the property or personnel of the one for whom a test is made, or for any loss suffered or sustained, directly or indirectly, through the use of its equipment, or its statements or opinion concerning the results of any test, tools lost or damaged in the hole shall be paid for at cost by the party for whom the test is made.



# TRILOBITE TESTING INC.

1515 Commerce Parkway • Hays, Kansas 67601

## Test Ticket

NO. **64694**

Well Name & No. Martin 4D #1 Test No. 5 Date 10/25/2017  
 Company Ritchie Exploration Elevation 3300 KB 3288 GL  
 Address 8100 E 22<sup>nd</sup> St N #700 Wichita, KS 67278  
 Co. Rep / Geo. John Goldsmith Rig Sterling #5  
 Location: Sec. 4 Twp. 16S Rge. 36W Co. Wichita State KS

Interval Tested 4733 - 4779 Zone Tested Morrow  
 Anchor Length 46' Drill Pipe Run 4625 Mud Wt. 9.4  
 Top Packer Depth 4728 Drill Collars Run 89 Vis 54  
 Bottom Packer Depth 4733 Wt. Pipe Run Ø WL 8.8  
 Total Depth 4779 Chlorides 6300 ppm System LCM 2#

Blow Description IF 1/2" blow receded to 1/4"  
ISF No return  
FF No blow after initial surge  
FSI No return

Rec	Feet of	(OIL SPOTS)	%gas	%oil	%water	%mud
<u>15</u>	<u>MUD</u>					
Rec	Feet of		%gas	%oil	%water	%mud
Rec	Feet of		%gas	%oil	%water	%mud
Rec	Feet of		%gas	%oil	%water	%mud
Rec	Feet of		%gas	%oil	%water	%mud

Rec Total 15 BHT 120 Gravity — API RW — @ — °F Chlorides — ppm

(A) Initial Hydrostatic <u>2437</u>	<input checked="" type="checkbox"/> Test <u>1150</u>	T-On Location <u>0245</u>
(B) First Initial Flow <u>22</u>	<input checked="" type="checkbox"/> Jars <u>250</u>	T-Started <u>0257</u>
(C) First Final Flow <u>23</u>	<input checked="" type="checkbox"/> Safety Joint <u>75</u>	T-Open <u>0507</u>
(D) Initial Shut-In <u>44</u>	<input checked="" type="checkbox"/> Circ Sub <u>N</u>	T-Pulled <u>0817</u>
(E) Second Initial Flow <u>23</u>	<input type="checkbox"/> Hourly Standby	T-Out <u>1030</u>
(F) Second Final Flow <u>25</u>	<input checked="" type="checkbox"/> Mileage <u>950 + x2</u> <u>147</u>	Comments <u>P/O Tool @ 1030</u>
(G) Final Shut-In <u>34</u>	<input type="checkbox"/> Sampler	<u>12/26</u>
(H) Final Hydrostatic <u>2425</u>	<input type="checkbox"/> Straddle	<input type="checkbox"/> Ruined Shale Packer
Initial Open <u>30</u>	<input type="checkbox"/> Shale Packer	<input type="checkbox"/> Ruined Packer
Initial Shut-In <u>45</u>	<input type="checkbox"/> Extra Packer	<input type="checkbox"/> Extra Copies
Final Flow <u>45</u>	<input type="checkbox"/> Extra Recorder	Sub Total <u>0</u>
Final Shut-In <u>60</u>	<input type="checkbox"/> Day Standby	Total <u>1622</u>
	<input type="checkbox"/> Accessibility	MP/DST Disc't
	Sub Total <u>1622</u>	

Approved By \_\_\_\_\_ Our Representative

Trilobite Testing Inc. shall not be liable for damaged of any kind of the property or personnel of the one for whom a test is made, or for any loss suffered or sustained, directly or indirectly, through the use of its equipment, or its statements or opinion concerning the results of any test, tools lost or damaged in the hole shall be paid for at cost by the party for whom the test is made.