



TRILOBITE TESTING, INC

DRILL STEM TEST REPORT

Berexco LLC

17 2S 37W Cheyenne KS

2020 N Bramblewood
Wichita KS 67206

Ardene 1-17

Job Ticket: 64955

DST#: 2

ATTN: Bryan Bynog

Test Start: 2015.11.02 @ 01:05:00

GENERAL INFORMATION:

Formation: **Douglas & LKC "A"**

Deviated: No Whipstock: ft (KB)

Time Tool Opened: 03:28:00

Time Test Ended: 10:28:30

Test Type: Conventional Bottom Hole (Reset)

Tester: Robert Zodrow

Unit No: 66

Interval: 4130.00 ft (KB) To 4225.00 ft (KB) (TVD)

Reference Elevations: 3272.00 ft (KB)

Total Depth: 4225.00 ft (KB) (TVD)

3261.00 ft (CF)

Hole Diameter: 7.88 inches Hole Condition: Fair

KB to GR/CF: 11.00 ft

Serial #: 8960 Outside

Press@RunDepth: 89.88 psig @ 4131.00 ft (KB)

Capacity: 8000.00 psig

Start Date: 2015.11.02

End Date:

2015.11.02

Last Calib.:

2015.11.02

Start Time: 01:05:05

End Time:

10:28:30

Time On Btm:

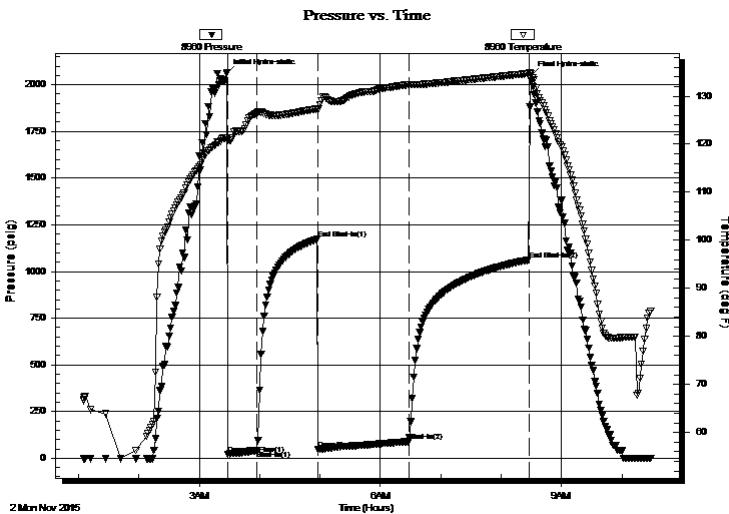
2015.11.02 @ 03:27:30

Time Off Btm:

2015.11.02 @ 08:29:30

TEST COMMENT: 30-IS- Blow built to 2 1/2"
60-IS- No return
90-FF- Blow built to 2 1/4"
120-FS- No return

PRESSURE SUMMARY



| Time (Min.) | Pressure (psig) | Temp (deg F) | Annotation |
|-------------|-----------------|--------------|----------------------|
| 0 | 2060.83 | 121.34 | Initial Hydro-static |
| 1 | 22.10 | 120.77 | Open To Flow (1) |
| 30 | 40.52 | 126.50 | Shut-In(1) |
| 90 | 1173.34 | 127.40 | End Shut-In(1) |
| 91 | 47.53 | 127.07 | Open To Flow (2) |
| 181 | 89.88 | 132.33 | Shut-In(2) |
| 300 | 1062.40 | 134.71 | End Shut-In(2) |
| 302 | 2049.97 | 134.64 | Final Hydro-static |

Recovery

| Length (ft) | Description | Volume (bbl) |
|-------------|--------------|--------------|
| 120.00 | OCM 5%O 95%M | 0.59 |
| | | |
| | | |
| | | |
| | | |

* Recovery from multiple tests

Gas Rates

| | Choke (inches) | Pressure (psig) | Gas Rate (Mcf/d) |
|--|----------------|-----------------|------------------|
| | | | |



**TRILOBITE
TESTING, INC**

DRILL STEM TEST REPORT

FLUID SUMMARY

Berexco LLC

17 2S 37W Cheyenne KS

2020 N Bramblewood
Wichita KS 67206

Ardene 1-17

Job Ticket: 64955

DST#: 2

ATTN: Bryan Bynog

Test Start: 2015.11.02 @ 01:05:00

Mud and Cushion Information

Mud Type: Gel Chem

Cushion Type:

Oil API:

deg API

Mud Weight: 9.00 lb/gal

Cushion Length:

ft

Water Salinity:

ppm

Viscosity: 47.00 sec/qt

Cushion Volume:

bbbl

Water Loss: 7.20 in³

Gas Cushion Type:

Resistivity: 0.00 ohm.m

Gas Cushion Pressure:

psig

Salinity: 800.00 ppm

Filter Cake: 2.00 inches

Recovery Information

Recovery Table

| Length ft | Description | Volume bbl |
|--------------|--------------|---------------|
| 120.00 | OCM 5%O 95%M | 0.590 |

Total Length: 120.00 ft Total Volume: 0.590 bbl

Num Fluid Samples: 0

Num Gas Bombs: 0

Serial #:

Laboratory Name:

Laboratory Location:

Recovery Comments:

