

KANSAS CORPORATION COMMISSION
OIL & GAS CONSERVATION DIVISION

TEMPORARY ABANDONMENT WELL APPLICATION

OPERATOR: License#
Name:
Address 1:
Address 2:
City: State: Zip:
Contact Person:
Phone:
Contact Person Email:
Field Contact Person:
Field Contact Person Phone:

API No. 15-
Spot Description:
Sec. Twp. S. R.
feet from N / S Line of Section
feet from E / W Line of Section
GPS Location: Lat: , Long:
Datum: NAD27 NAD83 WGS84
County: Elevation: GL KB
Lease Name: Well #:
Well Type: Oil Gas OG WSW Other:
SWD Permit #: ENHR Permit #:
Gas Storage Permit #:
Spud Date: Date Shut-In:

Table with 7 columns: Conductor, Surface, Production, Intermediate, Liner, Tubing. Rows include Size, Setting Depth, Amount of Cement, Top of Cement, Bottom of Cement.

Casing Fluid Level from Surface: How Determined? Date:
Casing Squeeze(s): to w / sacks of cement, to w / sacks of cement. Date:
Do you have a valid Oil & Gas Lease? Yes No
Depth and Type: Junk in Hole at Tools in Hole at Casing Leaks: Yes No Depth of casing leak(s):
Type Completion: ALT. I ALT. II Depth of: DV Tool: w / sacks of cement Port Collar: w / sack of cement
Packer Type: Size: Inch Set at: Feet
Total Depth: Plug Back Depth: Plug Back Method:

Geological Data:

Table with 4 columns: Formation Name, Formation Top, Formation Base, Completion Information. Rows 1 and 2.

UNDER PENALTY OF PERJURY I HEREBY ATTEST THAT THE INFORMATION CONTAINED HEREIN IS TRUE AND CORRECT TO THE BEST OF MY KNOWLEDGE

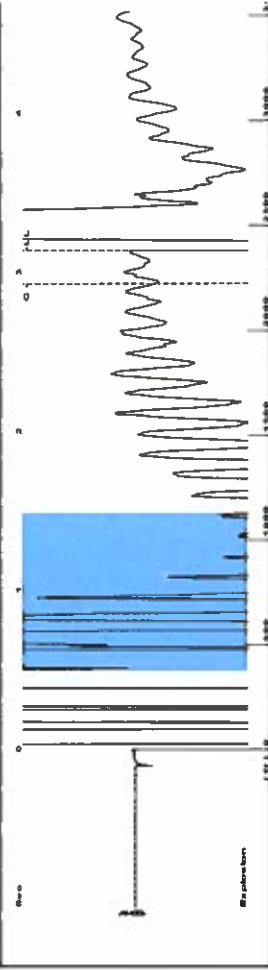
Submitted Electronically

Do NOT Write in This Space - KCC USE ONLY
Date Tested: Results: Date Plugged: Date Repaired: Date Put Back in Service:
Review Completed by: Comments:
TA Approved: Yes Denied Date:

Mail to the Appropriate KCC Conservation Office:

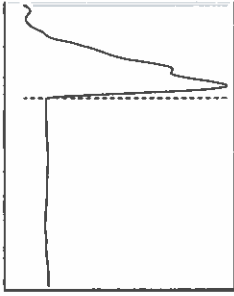
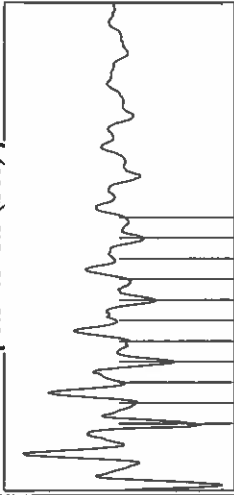
Table with 3 columns: District Office #, Address, Phone. Rows 1-4.

Group: TAD Well: Robinson D2 (acquired on: 03/22/18 10:33:46)

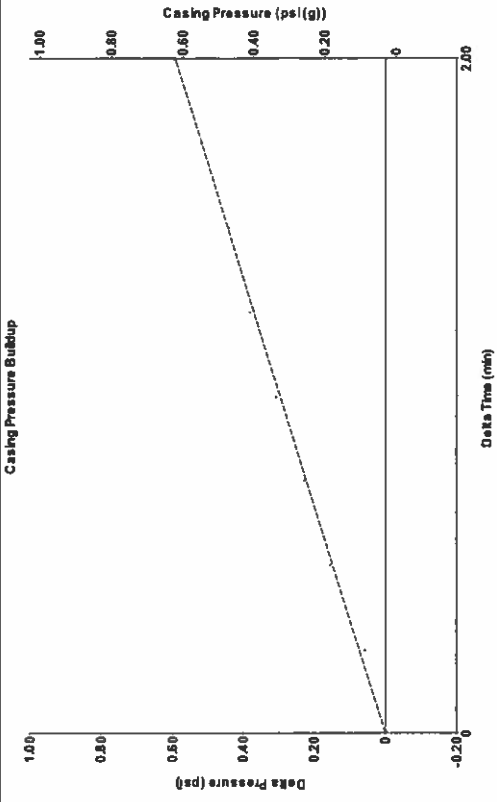


Filter Type High Pass
Manual Acoustic Velocity 1495.28 ft/s
Automatic Collar Count Yes
Manual JTS/sec 23.5849
Time 3.136 sec
Joints 75.0015 Jts
Depth 2377.55 ft

[0.5 to 1.5 (Sec)]



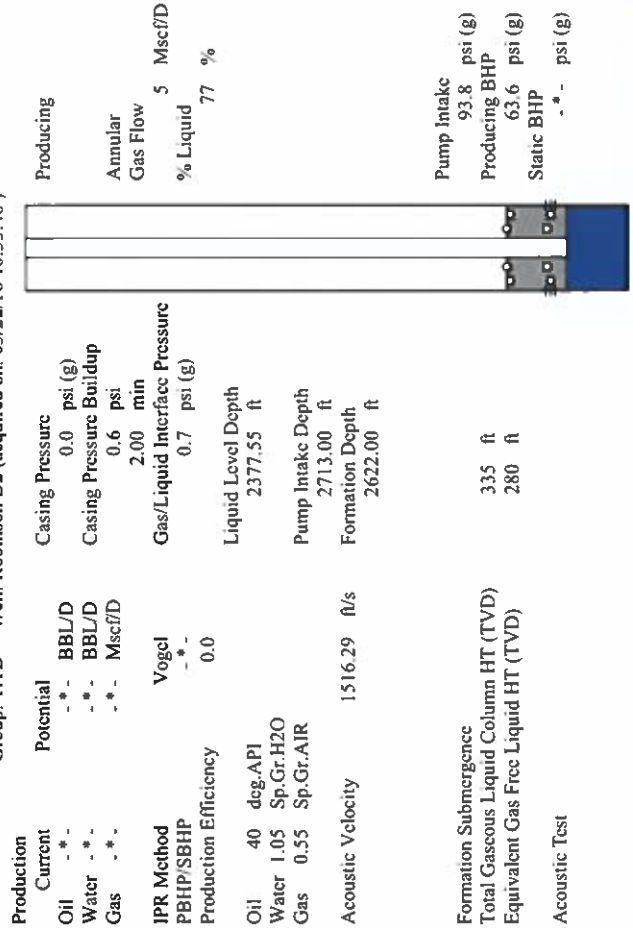
Group: TAD Well: Robinson D2 (acquired on: 03/22/18 10:33:46)



Change in Pressure 0.59 psi
Change in Time 2.00 min
 PTI3865
 Range
 0 - ? psi

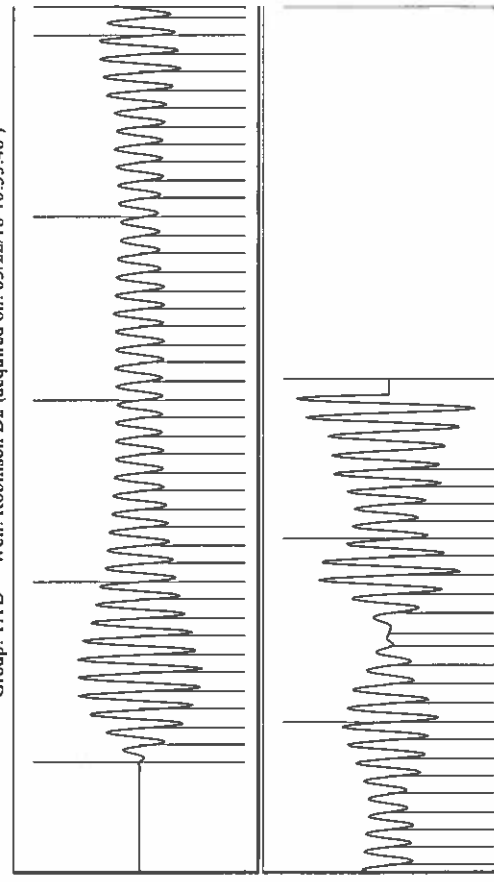
Analysis Method: Automatic

Group: TAD Well: Robinson D2 (acquired on: 03/22/18 10:33:46)



Production	Potential	Casing Pressure	Producing
Oil - *	0.0 psi (g)		Annular
Water - *	BBL/D		Gas Flow 5 Mscf/D
Gas - *	BBL/D	0.6 psi	% Liquid 77 %
	Mscf/D	2.00 min	
IPR Method Vogel	Gas/Liquid Interface Pressure		
PBHP/SBHP - *	0.7 psi (g)		
Production Efficiency 0.0			
	Liquid Level Depth		
Oil 40 deg-API	2377.55 ft		
Water 1.05 Sp.Gr.H2O	Pump Intake Depth		
Gas 0.55 Sp.Gr.AIR	2713.00 ft		
Acoustic Velocity 1516.29 ft/s	Formation Depth		
	2622.00 ft		
			Pump Intake 93.8 psi (g)
			Producing BHP 63.6 psi (g)
Formation Submergence 335 ft			Static BHP - * - psi (g)
Total Gaseous Liquid Column HT (TVD) 280 ft			
Equivalent Gas Free Liquid HT (TVD)			
Acoustic Test			

Group: TAD Well: Robinson D2 (acquired on: 03/22/18 10:33:46)



Acoustic Velocity 1516.29 ft/s	Joints counted 64
Joints Per Second 23.9163 Jts/sec	Joints to liquid level 75.0015
Depth to liquid level 2377.55 ft	Filter Width 25.5849
Automatic Collar Count Yes	Time to 1st Collar 0.252

STATE OF KANSAS

CORPORATION COMMISSION
CONSERVATION DIVISION
DISTRICT OFFICE No. 1
210 E. FRONTVIEW, SUITE A
DODGE CITY, KS 67801



PHONE: 620-682-7933
<http://kcc.ks.gov/>

GOVERNOR JEFF COLYER, M.D.

SHARI FEIST ALBRECHT, CHAIR | JAY SCOTT EMLER, COMMISSIONER | PAT APPLE, COMMISSIONER

March 27, 2018

Katherine McClurkan
Merit Energy Company, LLC
13727 Noel Road, Suite 1200
Dallas, TX 75240

Re: Temporary Abandonment
API 15-093-20475-00-00
ROBISON D 2
NE/4 Sec.05-25S-36W
Kearny County, Kansas

Dear Katherine McClurkan:

Your application for Temporary Abandonment (TA) for the above-listed well is denied for the following reasons(s):

High Fluid Level

Pursuant to K.A.R. 82-3-111, the well must be plugged, or returned to service, or obtain temporary abandonment status by April 24, 2018.

This deadline does NOT override any compliance deadline given to you in any Commission Order.

You may contact me if you have any questions.

Sincerely,
Michael Maier
KCC DISTRICT 1