

KANSAS CORPORATION COMMISSION
OIL & GAS CONSERVATION DIVISION

TEMPORARY ABANDONMENT WELL APPLICATION

OPERATOR: License#
Name:
Address 1:
Address 2:
City: State: Zip:
Contact Person:
Phone:
Contact Person Email:
Field Contact Person:
Field Contact Person Phone:

API No. 15-
Spot Description:
Sec. Twp. S. R.
GPS Location: Lat: Long:
Datum:
County: Elevation:
Lease Name: Well #:
Well Type:
Spud Date: Date Shut-In:

Table with 7 columns: Conductor, Surface, Production, Intermediate, Liner, Tubing. Rows include Size, Setting Depth, Amount of Cement, Top of Cement, Bottom of Cement.

Casing Fluid Level from Surface: How Determined? Date:
Casing Squeeze(s): to w / sacks of cement, to w / sacks of cement. Date:
Do you have a valid Oil & Gas Lease?
Depth and Type: Junk in Hole at Tools in Hole at Casing Leaks:
Type Completion: ALT. I ALT. II Depth of: DV Tool: Port Collar:
Packer Type: Size: Inch Set at: Feet
Total Depth: Plug Back Depth: Plug Back Method:

Geological Data:

Table with 4 columns: Formation Name, Formation Top, Formation Base, Completion Information. Rows 1 and 2.

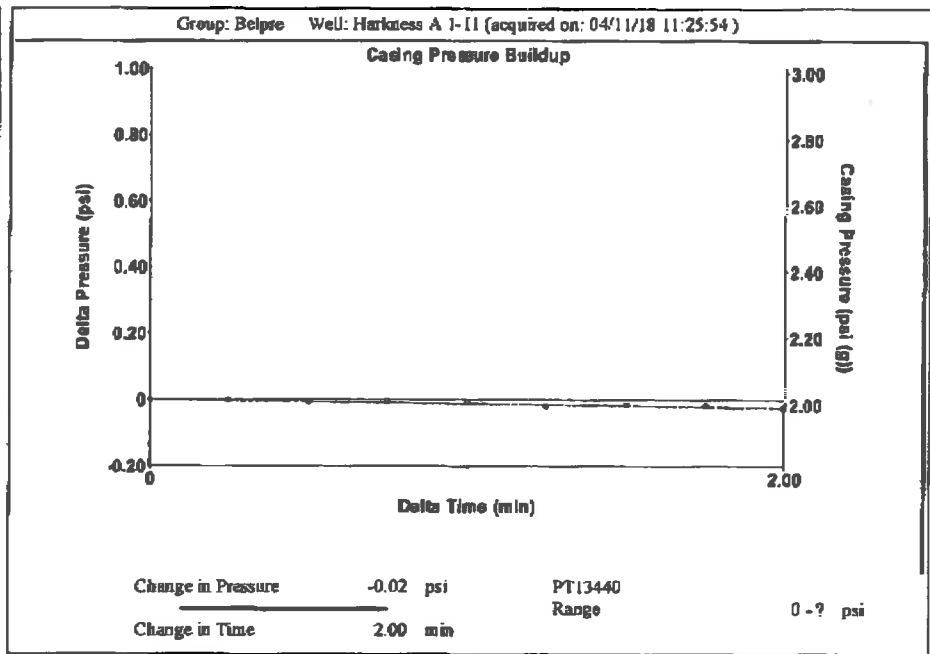
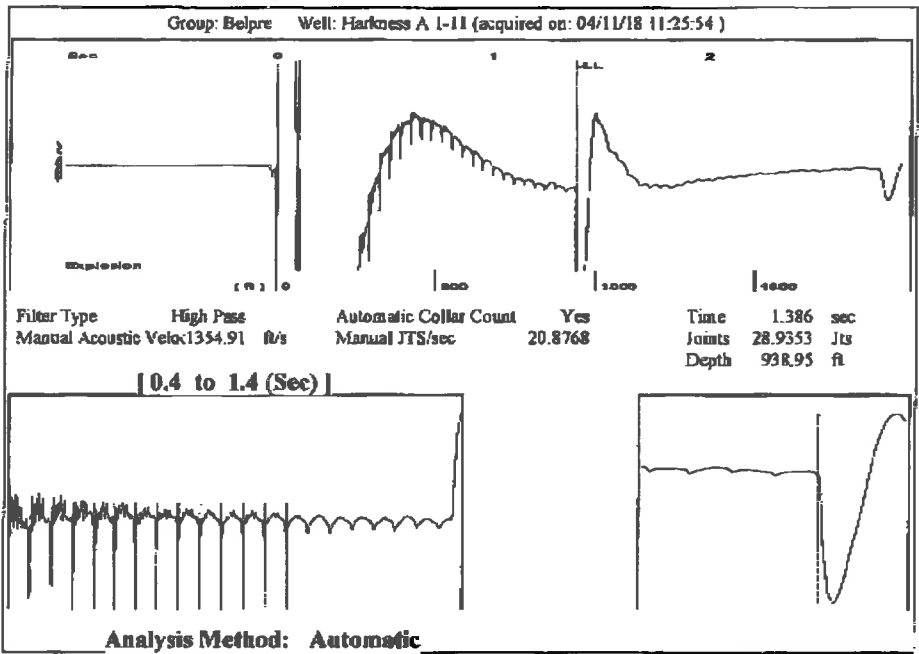
UNDER PENALTY OF PERJURY I HEREBY ATTEST THAT THE INFORMATION CONTAINED HEREIN IS TRUE AND CORRECT TO THE BEST OF MY KNOWLEDGE

Submitted Electronically

Form with fields: Do NOT Write in This Space - KCC USE ONLY, Date Tested, Results, Date Plugged, Date Repaired, Date Put Back in Service, Review Completed by, Comments, TA Approved, Date.

Mail to the Appropriate KCC Conservation Office:

Table with 2 columns: Office Address, Phone Number. Rows for District Offices #1, #2, #3, and #4.



Group: Belpre Well: Harkness A 1-11 (acquired on: 04/11/18 11:25:54)

Production	Potential	Casing Pressure		Producing
Current		2.0 psi (g)		
Oil -*-	-*- BBL/D	Casing Pressure Buildup		Annular
Water -*-	-*- BBL/D	-0.024 psi		Gas Flow
Gas -*-	-*- Msc/D	2.00 min		0 Msc/D
IPR Method	Vogel	Gas/Liquid Interface Pressure		% Liquid
PBHP/SBHP	-*-	2.4 psi (g)		100 %
Production Efficiency	0.0	Liquid Level Depth		
Oil 40 deg API		938.95 ft		
Water 1.05 Sp.Gr.H2O		Pump Intake Depth		
Gas 0.64 Sp.Gr.AIR		2564.00 ft		
Acoustic Velocity 1354.91 ft/s		Formation Depth		
		2534.00 ft		
Formation Submergence			Pump Intake	
Total Gaseous Liquid Column HT (TVD)	1625 ft		547.8 psi (g)	
Equivalent Gas Free Liquid HT (TVD)	1625 ft		Producing BHP	
Acoustic Test			538.1 psi (g)	
			Static BHP	
			-*- psi (g)	

Group: Belpre Well: Harkness A 1-11 (acquired on: 04/11/18 11:25:54)

No Collar Count Data Available

STATE OF KANSAS

CORPORATION COMMISSION
CONSERVATION DIVISION
DISTRICT No. 1
210 E. FRONTVIEW, SUITE A
DODGE CITY, KS 67801



PHONE: 620-682-7933
<http://kcc.ks.gov/>

GOVERNOR JEFF COLYER, M.D.

SHARI FEIST ALBRECHT, CHAIR | JAY SCOTT EMLER, COMMISSIONER | DWIGHT D. KEEN, COMMISSIONER

April 17, 2018

Margery L. Nagel
F. G. Holl Company L.L.C.
9431 E CENTRAL STE 100
WICHITA, KS 67206-2563

Re: Temporary Abandonment
API 15-185-22990-00-00
HARKNESS A 1-11
NW/4 Sec.11-24S-15W
Stafford County, Kansas

Dear Margery L. Nagel:

Your application for Temporary Abandonment (TA) for the above-listed well is denied for the following reasons(s):

Shut-in Over 10 years

Pursuant to K.A.R. 82-3-111, the well must be plugged or returned to service by May 15, 2018.

If you wish to instead file an application for an exception to the 10-year limitation of K.A.R. 82-3-111, demonstrating why it is necessary to TA the well for more than 10 years, then you must file the application for an exception by May 15, 2018.

This deadline does NOT override any compliance deadline given to you in any Commission Order.

You may contact me if you have any questions.

Sincerely,
Michael Maier
KCC DISTRICT 1