

KANSAS CORPORATION COMMISSION  
OIL & GAS CONSERVATION DIVISION

TEMPORARY ABANDONMENT WELL APPLICATION

OPERATOR: License# \_\_\_\_\_  
 Name: \_\_\_\_\_  
 Address 1: \_\_\_\_\_  
 Address 2: \_\_\_\_\_  
 City: \_\_\_\_\_ State: \_\_\_\_\_ Zip: \_\_\_\_\_ + \_\_\_\_\_  
 Contact Person: \_\_\_\_\_  
 Phone: ( \_\_\_\_\_ ) \_\_\_\_\_  
 Contact Person Email: \_\_\_\_\_  
 Field Contact Person: \_\_\_\_\_  
 Field Contact Person Phone: ( \_\_\_\_\_ ) \_\_\_\_\_

API No. 15- \_\_\_\_\_  
 Spot Description: \_\_\_\_\_  
 \_\_\_\_\_ - \_\_\_\_\_ - \_\_\_\_\_ - \_\_\_\_\_ Sec. \_\_\_\_\_ Twp. \_\_\_\_\_ S. R. \_\_\_\_\_  E  W  
 \_\_\_\_\_ feet from  N /  S Line of Section  
 \_\_\_\_\_ feet from  E /  W Line of Section  
 GPS Location: Lat: \_\_\_\_\_, Long: \_\_\_\_\_  
(e.g. xx.xxxxx) (e.g. -xxx.xxxxx)  
 Datum:  NAD27  NAD83  WGS84  
 County: \_\_\_\_\_ Elevation: \_\_\_\_\_  GL  KB  
 Lease Name: \_\_\_\_\_ Well #: \_\_\_\_\_  
 Well Type: (check one)  Oil  Gas  OG  WSW  Other: \_\_\_\_\_  
 SWD Permit #: \_\_\_\_\_  ENHR Permit #: \_\_\_\_\_  
 Gas Storage Permit #: \_\_\_\_\_  
 Spud Date: \_\_\_\_\_ Date Shut-In: \_\_\_\_\_

|                  | Conductor | Surface | Production | Intermediate | Liner | Tubing |
|------------------|-----------|---------|------------|--------------|-------|--------|
| Size             |           |         |            |              |       |        |
| Setting Depth    |           |         |            |              |       |        |
| Amount of Cement |           |         |            |              |       |        |
| Top of Cement    |           |         |            |              |       |        |
| Bottom of Cement |           |         |            |              |       |        |

Casing Fluid Level from Surface: \_\_\_\_\_ How Determined? \_\_\_\_\_ Date: \_\_\_\_\_  
 Casing Squeeze(s): \_\_\_\_\_ to \_\_\_\_\_ w / \_\_\_\_\_ sacks of cement, \_\_\_\_\_ to \_\_\_\_\_ w / \_\_\_\_\_ sacks of cement. Date: \_\_\_\_\_  
(top) (bottom) (top) (bottom)  
 Do you have a valid Oil & Gas Lease?  Yes  No  
 Depth and Type:  Junk in Hole at \_\_\_\_\_  Tools in Hole at \_\_\_\_\_ Casing Leaks:  Yes  No Depth of casing leak(s): \_\_\_\_\_  
(depth) (depth)  
 Type Completion:  ALT. I  ALT. II Depth of:  DV Tool: \_\_\_\_\_ w / \_\_\_\_\_ sacks of cement  Port Collar: \_\_\_\_\_ w / \_\_\_\_\_ sack of cement  
(depth) (depth)  
 Packer Type: \_\_\_\_\_ Size: \_\_\_\_\_ Inch Set at: \_\_\_\_\_ Feet  
 Total Depth: \_\_\_\_\_ Plug Back Depth: \_\_\_\_\_ Plug Back Method: \_\_\_\_\_

**Geological Data:**

| Formation Name | Formation Top | Formation Base | Completion Information   |
|----------------|---------------|----------------|--|
| 1. _____       | At: _____     | to _____ Feet  | Perforation Interval _____ to _____ Feet or Open Hole Interval _____ to _____ Feet |
| 2. _____       | At: _____     | to _____ Feet  | Perforation Interval _____ to _____ Feet or Open Hole Interval _____ to _____ Feet |

UNDER PENALTY OF PERJURY I HEREBY ATTEST THAT THE INFORMATION CONTAINED HEREIN IS TRUE AND CORRECT TO THE BEST OF MY KNOWLEDGE

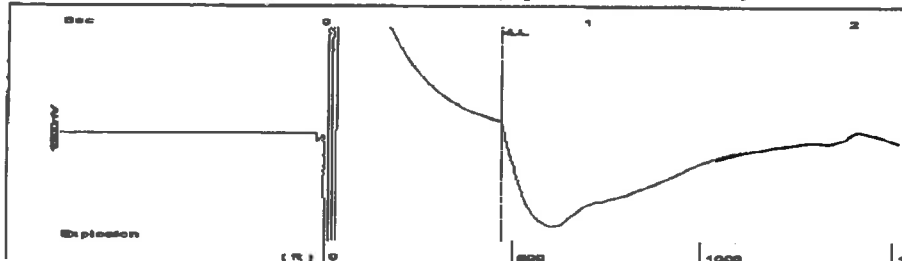
Submitted Electronically

|   |  |                |                     |                      |                                 |
|---|--|----------------|---------------------|----------------------|---------------------------------|
| <b>Do NOT Write in This Space - KCC USE ONLY</b>                                      | Date Tested: _____                         | Results: _____ | Date Plugged: _____ | Date Repaired: _____ | Date Put Back in Service: _____ |
|   | Review Completed by: _____ Comments: _____ |                |                     |                      |                                 |
| TA Approved: <input type="checkbox"/> Yes <input type="checkbox"/> Denied Date: _____ |  |                |                     |                      |                                 |

Mail to the Appropriate KCC Conservation Office:

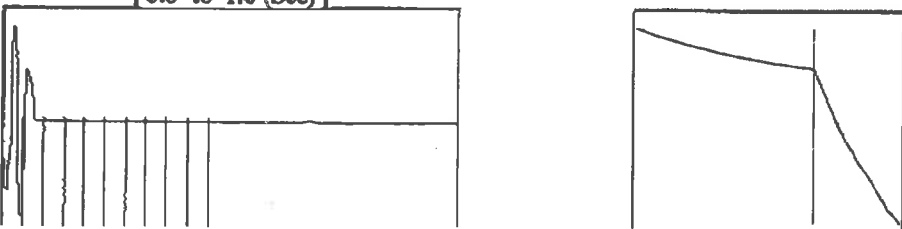
|  |  |                    |
|--|--|--------------------|
|  | KCC District Office #1 - 210 E. Frontview, Suite A, Dodge City, KS 67801               | Phone 620.682.7933 |
|  | KCC District Office #2 - 3450 N. Rock Road, Building 600, Suite 601, Wichita, KS 67226 | Phone 316.337.7400 |
|  | KCC District Office #3 - 137 E. 21st St., Chanute, KS 66720                            | Phone 620.902.6450 |
|  | KCC District Office #4 - 2301 E. 13th Street, Hays, KS 67601-2651                      | Phone 785.261.6250 |

Group: Belpre Well: Grybowski-Martin 1-18 (acquired on: 04/24/18 13:08:24)



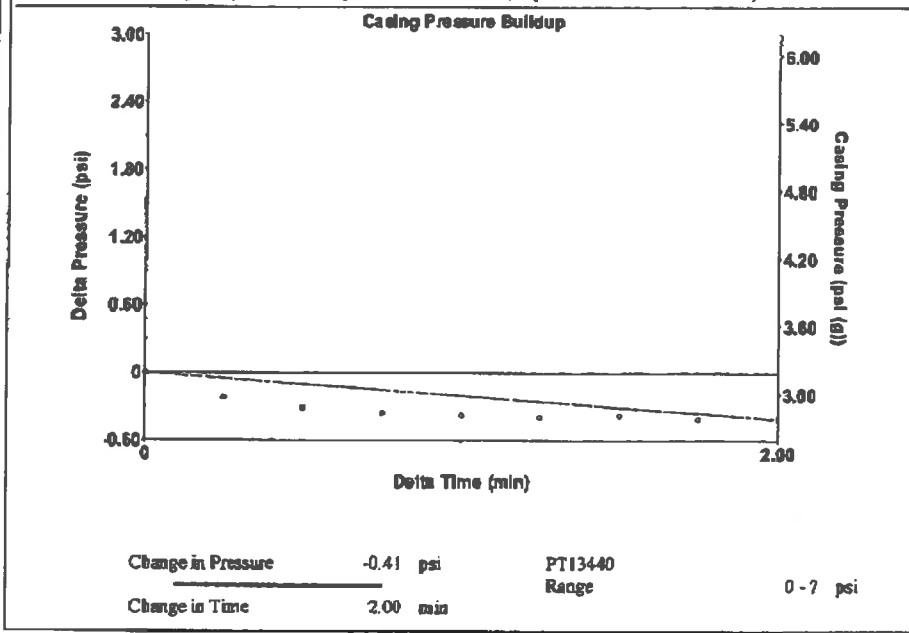
Filter Type High Pass Automatic Collar Count Yes Time 0.673 sec  
 Manual Acoustic Veloc: 1393.41 ft/s Manual JTS/sec 21.978 Joints 14.7912 Jts  
 Depth 468.88 ft

[ 0.0 to 1.0 (Sec) ]



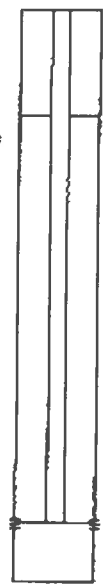
Analysis Method: Automatic

Group: Belpre Well: Grybowski-Martin 1-18 (acquired on: 04/24/18 13:08:24)



Group: Belpre Well: Grybowski-Martin 1-18 (acquired on: 04/24/18 13:08:24)

|                                      |            |                               |  |                  |  |
|--------------------------------------|------------|-------------------------------|--|------------------|--|
| <b>Production</b>                    |            |                               |  |                  |  |
| Current                              | Potential  | Casing Pressure               |  | Producing        |  |
| Oil -.-                              | -.- BBL/D  | 3.2 psi (g)                   |  | Annular Gas Flow |  |
| Water -.-                            | -.- BBL/D  | Casing Pressure Buildup       |  | % Liquid         |  |
| Gas -.-                              | -.- Mscf/D | -0.409 psi                    |  | 100 %            |  |
|                                      |            | 2.00 min                      |  |                  |  |
| IPR Method                           | Vogel      | Gas/Liquid Interface Pressure |  |                  |  |
| PBHP/SBHP                            | -.-        | 3.4 psi (g)                   |  |                  |  |
| Production Efficiency                | 0.0        |                               |  |                  |  |
|                                      |            | Liquid Level Depth            |  |                  |  |
| Oil 40 deg API                       |            | 468.88 ft                     |  |                  |  |
| Water 1.05 Sp.Gr.H2O                 |            | Pump Intake Depth             |  |                  |  |
| Gas 0.60 Sp.Gr.AIR                   |            | 4342.00 ft                    |  |                  |  |
| Acoustic Velocity 1393.41 ft/s       |            | Formation Depth               |  |                  |  |
|                                      |            | 4355.00 ft                    |  |                  |  |
|                                      |            |                               |  |                  |  |
| Formation Submergence                |            |                               |  |                  |  |
| Total Gaseous Liquid Column HT (TVD) |            | 3873 ft                       |  |                  |  |
| Equivalent Gas Free Liquid HT (TVD)  |            | 3873 ft                       |  |                  |  |
| Acoustic Test                        |            |                               |  |                  |  |



Pump Intake  
 1271.9 psi (g)  
 Producing BHP  
 1277.8 psi (g)  
 Static BHP  
 825.4 psi (g)

Group: Belpre Well: Grybowski-Martin 1-18 (acquired on: 04/24/18 13:08:24)

No Collar Count Data Available

# STATE OF KANSAS

CORPORATION COMMISSION  
CONSERVATION DIVISION  
DISTRICT No. 1  
210 E. FRONTVIEW, SUITE A  
DODGE CITY, KS 67801



PHONE: 620-682-7933  
<http://kcc.ks.gov/>

GOVERNOR JEFF COLYER, M.D.

SHARI FEIST ALBRECHT, CHAIR | JAY SCOTT EMLER, COMMISSIONER | DWIGHT D. KEEN, COMMISSIONER

May 01, 2018

Margery L. Nagel  
F. G. Holl Company L.L.C.  
9431 E CENTRAL STE 100  
WICHITA, KS 67206-2563

Re: Temporary Abandonment  
API 15-047-20342-00-00  
GRYBOWSKI - MARTIN 1  
NE/4 Sec.18-24S-17W  
Edwards County, Kansas

Dear Margery L. Nagel:

Your application for Temporary Abandonment (TA) for the above-listed well is denied for the following reasons(s):

## **High Fluid Level**

Pursuant to K.A.R. 82-3-111, the well must be plugged, or returned to service, or obtain temporary abandonment status by May 29, 2018.

**This deadline does NOT override any compliance deadline given to you in any Commission Order.**

You may contact me if you have any questions.

Sincerely,  
Michael Maier  
KCC DISTRICT 1