

KANSAS CORPORATION COMMISSION
OIL & GAS CONSERVATION DIVISION

TEMPORARY ABANDONMENT WELL APPLICATION

OPERATOR: License# \_\_\_\_\_
Name: \_\_\_\_\_
Address 1: \_\_\_\_\_
Address 2: \_\_\_\_\_
City: \_\_\_\_\_ State: \_\_\_\_\_ Zip: \_\_\_\_\_ + \_\_\_\_\_
Contact Person: \_\_\_\_\_
Phone:( \_\_\_\_\_ ) \_\_\_\_\_
Contact Person Email: \_\_\_\_\_
Field Contact Person: \_\_\_\_\_
Field Contact Person Phone: ( \_\_\_\_\_ ) \_\_\_\_\_

API No. 15- \_\_\_\_\_
Spot Description: \_\_\_\_\_
Sec. \_\_\_\_\_ Twp. \_\_\_\_\_ S. R. \_\_\_\_\_ E \_\_\_\_\_ W
feet from \_\_\_\_\_ N / \_\_\_\_\_ S Line of Section
feet from \_\_\_\_\_ E / \_\_\_\_\_ W Line of Section
GPS Location: Lat: \_\_\_\_\_, Long: \_\_\_\_\_
Datum: \_\_\_\_\_ NAD27 \_\_\_\_\_ NAD83 \_\_\_\_\_ WGS84
County: \_\_\_\_\_ Elevation: \_\_\_\_\_ GL \_\_\_\_\_ KB
Lease Name: \_\_\_\_\_ Well #: \_\_\_\_\_
Well Type: (check one) \_\_\_\_\_ Oil \_\_\_\_\_ Gas \_\_\_\_\_ OG \_\_\_\_\_ WSW \_\_\_\_\_ Other: \_\_\_\_\_
\_\_\_\_\_ SWD Permit #: \_\_\_\_\_ ENHR Permit #: \_\_\_\_\_
\_\_\_\_\_ Gas Storage Permit #: \_\_\_\_\_
Spud Date: \_\_\_\_\_ Date Shut-In: \_\_\_\_\_

Table with 7 columns: Conductor, Surface, Production, Intermediate, Liner, Tubing. Rows include Size, Setting Depth, Amount of Cement, Top of Cement, Bottom of Cement.

Casing Fluid Level from Surface: \_\_\_\_\_ How Determined? \_\_\_\_\_ Date: \_\_\_\_\_
Casing Squeeze(s): \_\_\_\_\_ to \_\_\_\_\_ w / \_\_\_\_\_ sacks of cement, \_\_\_\_\_ to \_\_\_\_\_ w / \_\_\_\_\_ sacks of cement. Date: \_\_\_\_\_
Do you have a valid Oil & Gas Lease? \_\_\_\_\_ Yes \_\_\_\_\_ No
Depth and Type: \_\_\_\_\_ Junk in Hole at \_\_\_\_\_ Tools in Hole at \_\_\_\_\_ Casing Leaks: \_\_\_\_\_ Yes \_\_\_\_\_ No Depth of casing leak(s): \_\_\_\_\_
Type Completion: \_\_\_\_\_ ALT. I \_\_\_\_\_ ALT. II Depth of: \_\_\_\_\_ DV Tool: \_\_\_\_\_ w / \_\_\_\_\_ sacks of cement \_\_\_\_\_ Port Collar: \_\_\_\_\_ w / \_\_\_\_\_ sack of cement
Packer Type: \_\_\_\_\_ Size: \_\_\_\_\_ Inch Set at: \_\_\_\_\_ Feet
Total Depth: \_\_\_\_\_ Plug Back Depth: \_\_\_\_\_ Plug Back Method: \_\_\_\_\_

Geological Date:

Table with 2 columns: Formation Name, Completion Information. Rows 1 and 2 for formation details.

UNDER PENALTY OF PERJURY I HEREBY ATTEST THAT THE INFORMATION CONTAINED HEREIN IS TRUE AND CORRECT TO THE BEST OF MY KNOWLEDGE

Submitted Electronically

Form with fields: Do NOT Write in This Space - KCC USE ONLY, Date Tested, Results, Date Plugged, Date Repaired, Date Put Back in Service, Review Completed by, Comments, TA Approved (Yes/No), Date.

Mail to the Appropriate KCC Conservation Office:

Table with 2 columns: Office Address, Phone Number. Rows for District Offices #1, #2, #3, and #4.

### General

Well ID 127470  
 Well Theis W 3-8  
 Company Sandridge  
 Operator - \* -  
 Lease Name Theis W 3-8  
 Elevation 2100.00 ft  
 Production Method Other  
 Dataset Description  
 second shot

Comment

### Surface Unit

Manufacturer - \* -  
 Unit Class Conventional  
 Unit API Number - \* -  
 Measured Stroke Length - \* - in  
 Rotation CW  
 Counter Balance Effect (Weights Level) - \* - Klb  
 Weight Of Counter Weights 2000 lb

### Prime Mover

Motor Type Electric  
 Rated HP - \* - HP  
 Run Time 24 hr/day  
 MFG/Comment - \* -

### Electric Motor Parameters

Rated Full Load AMPS - \* -  
 Rated Full Load RPM - \* -  
 Synchronous RPM 1200  
 Voltage - \* -  
 Hertz 60  
 Phase 3  
 Power Consumption 5  
 Power Demand 8 \$/KW

### Tubulars

Tubing OD 2.375 in  
 Casing OD 4.500 in  
 Average Joint Length 30.370 ft  
 Anchor Depth - \* - ft  
 Kelly Bushing 12.00 ft

### Pump

Plunger Diameter - \* - in  
 Pump Intake Depth 5952.00 ft  
 \*\*Total Rod Length < Pump Depth

### Polished Rod

Polished Rod Diameter - \* - in

### Rod String

	Top Taper	Taper 2	Taper 3	Taper 4	Taper 5	Taper 6
Rod Type	- * -	- * -	- * -	- * -	- * -	- * -
Rod Length	- * -	- * -	- * -	- * -	- * -	- * - ft
Rod Diameter	- * -	- * -	- * -	- * -	- * -	- * - in
Rod Weight	0.0	0.0	0.0	0.0	0.0	0.0 lb

Total Rod Length 0  
 Total Rod Weight 0.00

Damp Up 0.05  
 Damp Down 0.05

### Conditions

#### Pressure

Static BHP 2635.2 psi (g)  
 Static BHP Method Acoustic  
 Static BHP Date 06/18/2018

Producing BHP - \* - psi (g)  
 Producing BHP Method - \* -  
 Producing BHP Date - \* -  
 Formation Depth 6299.00 ft

#### Surface Producing Pressures

Tubing Pressure 0.0 psi (g)  
 Casing Pressure -4.5 psi (g)

#### Casing Pressure Buildup

Change in Pressure 0.1 psi  
 Over Change in Time 0.75 min

#### Production

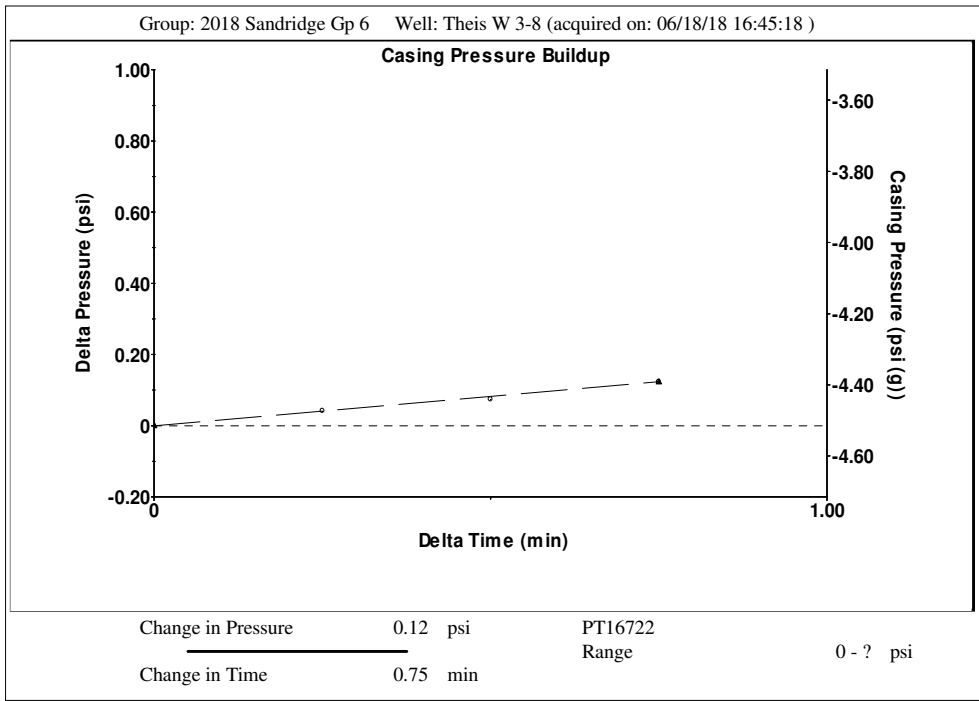
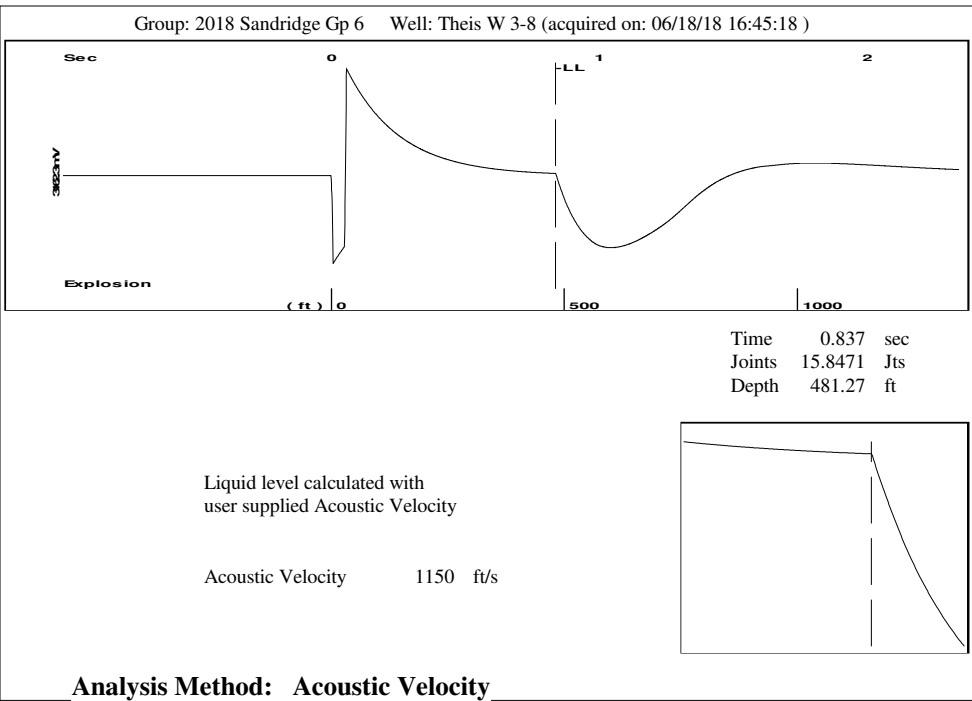
Oil Production 0 BBL/D  
 Water Production 1 BBL/D  
 Gas Production - \* - Mscf/D  
 Production Date 06/26/2017

#### Temperatures

Surface Temperature 70 deg F  
 Bottomhole Temperature 150 deg F

#### Fluid Properties

Oil API 40 deg.API  
 Water Specific Gravity 1.05 Sp.Gr.H2O



Group: 2018 Sandridge Gp 6 Well: Theis W 3-8 (acquired on: 06/18/18 16:45:18 )

Production Current	Potential	Casing Pressure	Static
Oil 0	- * - BBL/D	-4.5 psi (g)	
Water 1	- * - BBL/D	Casing Pressure Buildup	Oil Column Height
Gas - * -	- * - Mscf/D	0.1 psi	MD 0 ft
		0.75 min	
IPR Method	Vogel	Gas/Liquid Interface Pressure	Water Column Height
PBHP/SBHP	- * -	-4.4 psi (g)	MD 5806 ft
Production Efficiency	0.0		
Oil 40 deg.API		Liquid Level Depth	
Water 1.05 Sp.Gr.H2O		481.27 ft	
Gas 0.85 Sp.Gr.AIR		Tubing Intake Depth	
		5952.00 ft	
Acoustic Velocity	1150 ft/s	Formation Depth	
		6299.00 ft	
		Static BHP	
		2635.2 psi (g)	

Theis W 3-8

Group: 2018 Sandridge Gp 6 Well: Theis W 3-8 (acquired on: 06/18/18 16:45:18 )

**Entered Acoustic Velocity for Liquid Level depth determination**

# STATE OF KANSAS

CORPORATION COMMISSION  
CONSERVATION DIVISION  
DISTRICT No. 1  
210 E. FRONTVIEW, SUITE A  
DODGE CITY, KS 67801



PHONE: 620-682-7933  
<http://kcc.ks.gov/>

GOVERNOR JEFF COLYER, M.D.

SHARI FEIST ALBRECHT, CHAIR | JAY SCOTT EMLER, COMMISSIONER | DWIGHT D. KEEN, COMMISSIONER

July 03, 2018

Laci Bevans  
SandRidge Exploration and Production LLC  
123 ROBERT S. KERR AVE  
OKLAHOMA CITY, OK 73102-6406

Re: Temporary Abandonment  
API 15-025-20875-00-00  
THEIS W. 3-8  
NE/4 Sec.08-35S-25W  
Clark County, Kansas

Dear Laci Bevans:

Your application for Temporary Abandonment (TA) for the above-listed well is denied for the following reasons(s):

## High Fluid Level

Pursuant to K.A.R. 82-3-111, the well must be plugged, or returned to service, or obtain temporary abandonment status by July 31, 2018.

**This deadline does NOT override any compliance deadline given to you in any Commission Order.**

You may contact me if you have any questions.

Sincerely,  
Kenny Sullivan  
KCC DISTRICT 1