

KANSAS CORPORATION COMMISSION
OIL & GAS CONSERVATION DIVISION

Form must be Typed
Form must be signed

TEMPORARY ABANDONMENT WELL APPLICATION

All blanks must be complete

OPERATOR: License#
Name:
Address 1:
Address 2:
City: State: Zip:
Contact Person:
Phone:
Contact Person Email:
Field Contact Person:
Field Contact Person Phone:

API No. 15-
Spot Description:
Sec. Twp. S. R.
GPS Location: Lat: Long:
Datum: NAD27 NAD83 WGS84
County: Elevation:
Lease Name: Well #:
Well Type: Oil Gas OG WSW Other:
SWD Permit #: ENHR Permit #:
Gas Storage Permit #:
Spud Date: Date Shut-In:

Table with 7 columns: Conductor, Surface, Production, Intermediate, Liner, Tubing. Rows include Size, Setting Depth, Amount of Cement, Top of Cement, Bottom of Cement.

Casing Fluid Level from Surface: How Determined? Date:
Casing Squeeze(s): to w / sacks of cement, to w / sacks of cement. Date:
Do you have a valid Oil & Gas Lease? Yes No
Depth and Type: Junk in Hole at Tools in Hole at Casing Leaks: Yes No Depth of casing leak(s):
Type Completion: ALT. I ALT. II Depth of: DV Tool: w / sacks of cement Port Collar: w / sack of cement
Packer Type: Size: Inch Set at: Feet
Total Depth: Plug Back Depth: Plug Back Method:

Geological Data:

Table with 4 columns: Formation Name, Formation Top, Formation Base, Completion Information. Rows 1 and 2.

UNDER PENALTY OF PERJURY I HEREBY ATTEST THAT THE INFORMATION CONTAINED HEREIN IS TRUE AND CORRECT TO THE BEST OF MY KNOWLEDGE

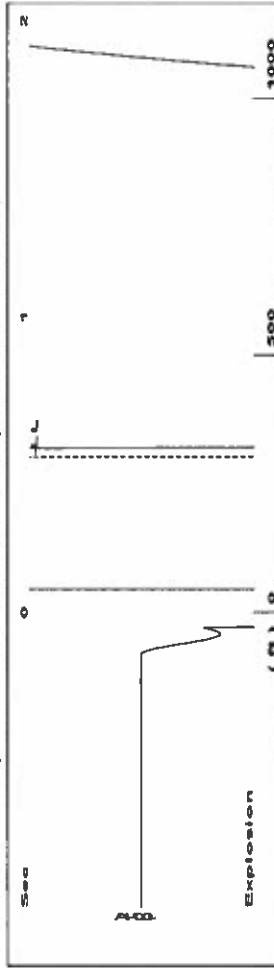
Submitted Electronically

Do NOT Write in This Space - KCC USE ONLY
Date Tested: Results: Date Plugged: Date Repaired: Date Put Back in Service:
Review Completed by: Comments:
TA Approved: Yes Denied Date:

Mail to the Appropriate KCC Conservation Office:

Table with 3 columns: District Office, Address, Phone. Rows for District Office #1, #2, #3, #4.

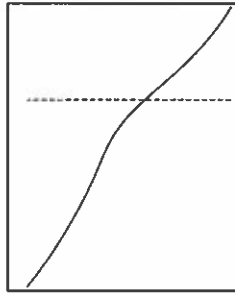
Group: TAD Well: Reeve Federal 32-2 (acquired on: 07/12/18 08:19:33)



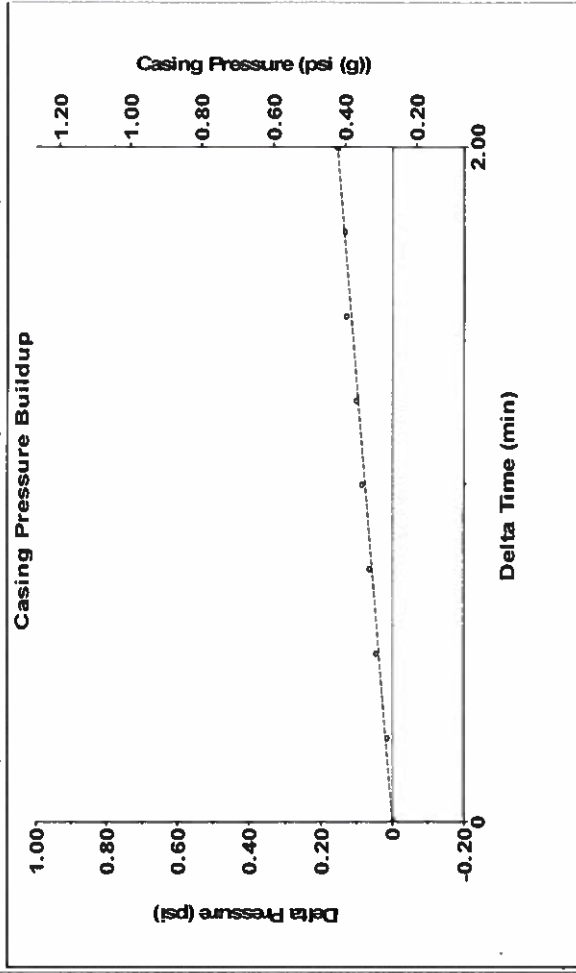
Time 0.526 sec  
Joints 9.54101 Jts  
Depth 302.45 ft

Liquid level calculated with user supplied Acoustic Velocity

Acoustic Velocity 1150 ft/s



Group: TAD Well: Reeve Federal 32-2 (acquired on: 07/12/18 08:19:33)



Change in Pressure 0.15 psi  
Change in Time 2.00 min  
PT13865 Range

**Analysis Method: Acoustic Velocity**

Group: TAD Well: Reeve Federal 32-2 (acquired on: 07/12/18 08:19:33)

Production	Potential	Casing Pressure	Producing
Oil	0.3 BBL/D	0.3 psi (g)	Annular
Water	0.2 BBL/D	0.2 psi	Gas Flow
Gas	0.2 Mscf/D	2.00 min	% Liquid
IPR Method	Vogel	Gas/Liquid Interface Pressure	100 %
PBHP/SBHP	0.0		
Production Efficiency			
Oil	40 deg API	Liquid Level Depth	
Water	1.05 Sp.Gr.H2O	302.45 ft	
Gas	0.85 Sp.Gr.AIR	Pump Intake Depth	
Acoustic Velocity	1150 ft/s	2782.00 ft	
		Formation Depth	
		2690.00 ft	
Formation Submergence			Pump Intake
Total Gaseous Liquid Column HT (TVD)			psi (g)
Equivalent Gas Free Liquid HT (TVD)			Producing BHP
			psi (g)
Acoustic Test			Static BHP
			psi (g)

Group: TAD Well: Reeve Federal 32-2 (acquired on: 07/12/18 08:19:33)

**Entered Acoustic Velocity for Liquid Level depth determination**

# STATE OF KANSAS

CORPORATION COMMISSION  
CONSERVATION DIVISION  
DISTRICT No. 1  
210 E. FRONTVIEW, SUITE A  
DODGE CITY, KS 67801



PHONE: 620-682-7933  
<http://kcc.ks.gov/>

GOVERNOR JEFF COLYER, M.D.

SHARI FEIST ALBRECHT, CHAIR | JAY SCOTT EMLER, COMMISSIONER | DWIGHT D. KEEN, COMMISSIONER

July 26, 2018

Katherine McClurkan  
Merit Energy Company, LLC  
13727 Noel Road, Suite 1200  
DALLAS, TX 75240

Re: Temporary Abandonment  
API 15-055-20691-00-01  
Reeve-Federal 32-2  
SE/4 Sec.32-25S-34W  
Finney County, Kansas

Dear Katherine McClurkan:

Your application for Temporary Abandonment (TA) for the above-listed well is denied for the following reasons(s):

## **High Fluid Level**

Pursuant to K.A.R. 82-3-111, the well must be plugged, or returned to service, or obtain temporary abandonment status by August 23, 2018.

**This deadline does NOT override any compliance deadline given to you in any Commission Order.**

You may contact me if you have any questions.

Sincerely,  
Michael Maier  
KCC DISTRICT 1