

KANSAS CORPORATION COMMISSION  
OIL & GAS CONSERVATION DIVISION

TEMPORARY ABANDONMENT WELL APPLICATION

OPERATOR: License# \_\_\_\_\_  
 Name: \_\_\_\_\_  
 Address 1: \_\_\_\_\_  
 Address 2: \_\_\_\_\_  
 City: \_\_\_\_\_ State: \_\_\_\_\_ Zip: \_\_\_\_\_ + \_\_\_\_\_  
 Contact Person: \_\_\_\_\_  
 Phone: ( \_\_\_\_\_ ) \_\_\_\_\_  
 Contact Person Email: \_\_\_\_\_  
 Field Contact Person: \_\_\_\_\_  
 Field Contact Person Phone: ( \_\_\_\_\_ ) \_\_\_\_\_

API No. 15- \_\_\_\_\_  
 Spot Description: \_\_\_\_\_  
 \_\_\_\_\_ - \_\_\_\_\_ - \_\_\_\_\_ - \_\_\_\_\_ Sec. \_\_\_\_\_ Twp. \_\_\_\_\_ S. R. \_\_\_\_\_  E  W  
 \_\_\_\_\_ feet from  N /  S Line of Section  
 \_\_\_\_\_ feet from  E /  W Line of Section  
 GPS Location: Lat: \_\_\_\_\_, Long: \_\_\_\_\_  
(e.g. xx.xxxxx) (e.g. -xxx.xxxxx)  
 Datum:  NAD27  NAD83  WGS84  
 County: \_\_\_\_\_ Elevation: \_\_\_\_\_  GL  KB  
 Lease Name: \_\_\_\_\_ Well #: \_\_\_\_\_  
 Well Type: (check one)  Oil  Gas  OG  WSW  Other: \_\_\_\_\_  
 SWD Permit #: \_\_\_\_\_  ENHR Permit #: \_\_\_\_\_  
 Gas Storage Permit #: \_\_\_\_\_  
 Spud Date: \_\_\_\_\_ Date Shut-In: \_\_\_\_\_

	Conductor	Surface	Production	Intermediate	Liner	Tubing
Size						
Setting Depth						
Amount of Cement						
Top of Cement						
Bottom of Cement						

Casing Fluid Level from Surface: \_\_\_\_\_ How Determined? \_\_\_\_\_ Date: \_\_\_\_\_  
 Casing Squeeze(s): \_\_\_\_\_ to \_\_\_\_\_ w / \_\_\_\_\_ sacks of cement, \_\_\_\_\_ to \_\_\_\_\_ w / \_\_\_\_\_ sacks of cement. Date: \_\_\_\_\_  
(top) (bottom) (top) (bottom)  
 Do you have a valid Oil & Gas Lease?  Yes  No  
 Depth and Type:  Junk in Hole at \_\_\_\_\_  Tools in Hole at \_\_\_\_\_ Casing Leaks:  Yes  No Depth of casing leak(s): \_\_\_\_\_  
(depth) (depth)  
 Type Completion:  ALT. I  ALT. II Depth of:  DV Tool: \_\_\_\_\_ w / \_\_\_\_\_ sacks of cement  Port Collar: \_\_\_\_\_ w / \_\_\_\_\_ sack of cement  
(depth) (depth)  
 Packer Type: \_\_\_\_\_ Size: \_\_\_\_\_ Inch Set at: \_\_\_\_\_ Feet  
 Total Depth: \_\_\_\_\_ Plug Back Depth: \_\_\_\_\_ Plug Back Method: \_\_\_\_\_

**Geological Data:**

Formation Name	Formation Top	Formation Base	Completion Information
1. _____	At: _____	to _____ Feet	Perforation Interval _____ to _____ Feet or Open Hole Interval _____ to _____ Feet
2. _____	At: _____	to _____ Feet	Perforation Interval _____ to _____ Feet or Open Hole Interval _____ to _____ Feet

UNDER PENALTY OF PERJURY I HEREBY ATTEST THAT THE INFORMATION CONTAINED HEREIN IS TRUE AND CORRECT TO THE BEST OF MY KNOWLEDGE

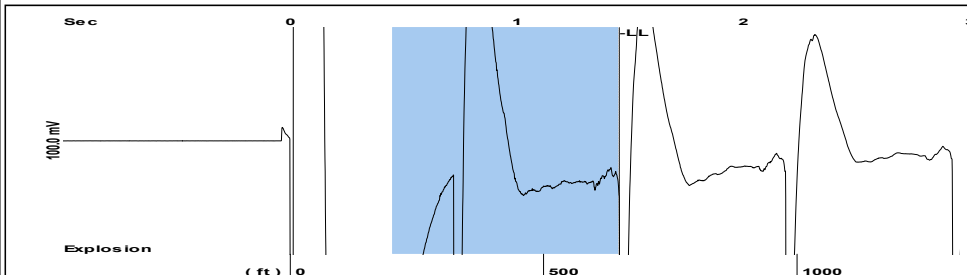
Submitted Electronically

<b>Do NOT Write in This Space - KCC USE ONLY</b>	Date Tested: _____	Results: _____	Date Plugged: _____	Date Repaired: _____	Date Put Back in Service: _____
	Review Completed by: _____ Comments: _____				
TA Approved: <input type="checkbox"/> Yes <input type="checkbox"/> Denied Date: _____					

Mail to the Appropriate KCC Conservation Office:

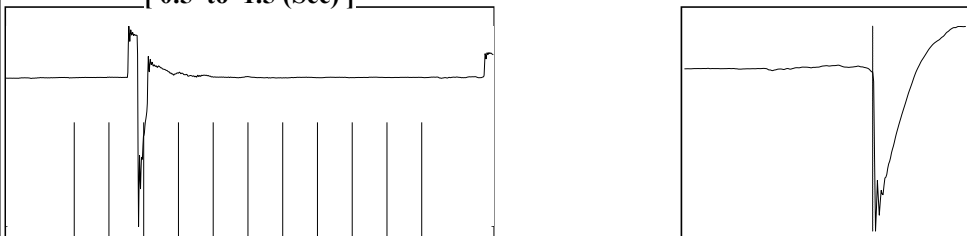
	KCC District Office #1 - 210 E. Frontview, Suite A, Dodge City, KS 67801	Phone 620.682.7933
	KCC District Office #2 - 3450 N. Rock Road, Building 600, Suite 601, Wichita, KS 67226	Phone 316.337.7400
	KCC District Office #3 - 137 E. 21st St., Chanute, KS 66720	Phone 620.902.6450
	KCC District Office #4 - 2301 E. 13th Street, Hays, KS 67601-2651	Phone 785.261.6250

Group: MyWells Well: Ross-B # 1 (acquired on: 09/14/18 11:36:48 )



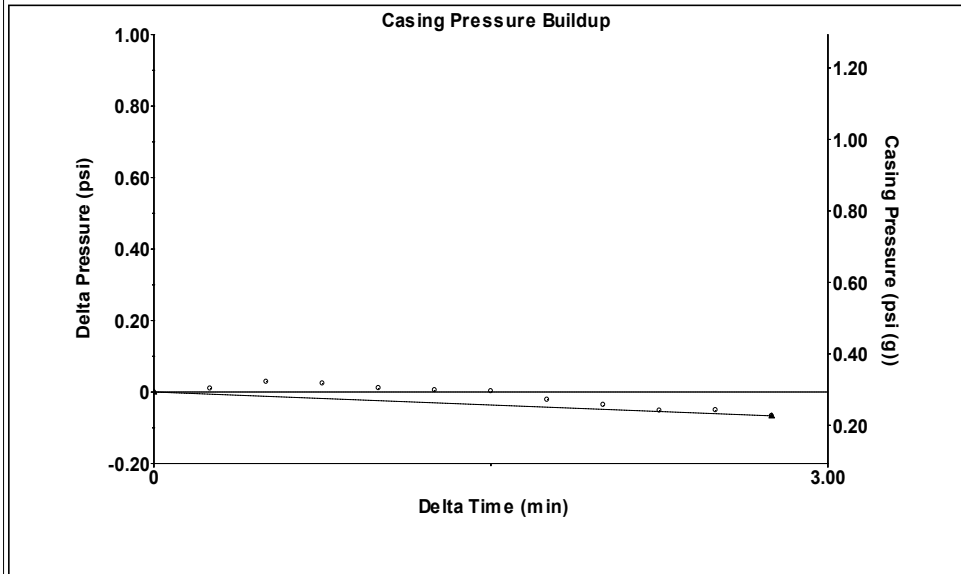
Filter Type High Pass Automatic Collar Count Yes Time 1.452 sec  
 Manual Acoustic Velo 893.969 ft/s Manual JTS/sec 14.0252 Joints 20.3647 Jts  
 Depth 649.02 ft

[ 0.5 to 1.5 (Sec) ]



**Analysis Method: Automatic**

Group: MyWells Well: Ross-B # 1 (acquired on: 09/14/18 11:36:48 )



Change in Pressure -0.07 psi PT12865  
 Change in Time 2.75 min Range 0 - ? psi

Group: MyWells Well: Ross-B # 1 (acquired on: 09/14/18 11:36:48 )

<b>Production</b>					
Current	Potential	Casing Pressure	0.3 psi (g)	Producing	
Oil - *-	- *- BBL/D	Casing Pressure Buildup	2.75 min	Annular Gas Flow	0 Mscf/D
Water - *-	- *- BBL/D	Gas/Liquid Interface Pressure	0.7 psi (g)	% Liquid	100 %
Gas - *-	- *- Mscf/D	Liquid Level Depth	649.02 ft		
IPR Method	Vogel	Pump Intake Depth	3605.00 ft	Pump Intake	968.4 psi (g)
PBHP/SBHP	- *-	Formation Depth	3605.00 ft	Producing BHP	968.4 psi (g)
Production Efficiency	0.0			Static BHP	- *- psi (g)
Oil 40 deg.API					
Water 1.05 Sp.Gr.H2O					
Gas 1.06 Sp.Gr.AIR					
Acoustic Velocity 893.969 ft/s					
Formation Submergence					
Total Gaseous Liquid Column HT (TVD)	2956 ft				
Equivalent Gas Free Liquid HT (TVD)	2956 ft				
Acoustic Test					

Group: MyWells Well: Ross-B # 1 (acquired on: 09/14/18 11:36:48 )

Acoustic Velocity	- *- ft/s	Joints counted	0
Joints Per Second	- *- jts/sec	Joints to liquid level	- *-
Depth to liquid level	- *- ft	Filter Width	12.0252
Automatic Collar Count	Yes	Time to 1st Collar	- *-

# STATE OF KANSAS

CORPORATION COMMISSION  
CONSERVATION DIVISION  
DISTRICT OFFICE No. 4  
2301 E. 13<sup>TH</sup> STREET  
HAYS, KS 67601-2651



PHONE: 785-261-6250  
FAX: 785-625-0564  
<http://kcc.ks.gov/>

GOVERNOR JEFF COLYER, M.D.

SHARI FEIST ALBRECHT, CHAIR | JAY SCOTT EMLER, COMMISSIONER | DWIGHT D. KEEN, COMMISSIONER

September 20, 2018

Melody C. Fletcher  
Oil Producers, Inc. of Kansas  
1710 WATERFRONT PKWY  
WICHITA, KS 67206-6603

Re: Temporary Abandonment  
API 15-163-22718-00-01  
ROSS OWWO 1-2  
NE/4 Sec.02-07S-20W  
Rooks County, Kansas

Dear Melody C. Fletcher :

Your application for Temporary Abandonment (TA) for the above-listed well is denied for the following reasons(s):

## **High Fluid Level**

Pursuant to K.A.R. 82-3-111, the well must be plugged, or returned to service, or obtain temporary abandonment status by October 18, 2018.

**This deadline does NOT override any compliance deadline given to you in any Commission Order.**

You may contact me if you have any questions.

Sincerely,  
RICHARD WILLIAMS  
KCC DISTRICT 4