

KANSAS CORPORATION COMMISSION  
OIL & GAS CONSERVATION DIVISION

TEMPORARY ABANDONMENT WELL APPLICATION

OPERATOR: License# \_\_\_\_\_  
 Name: \_\_\_\_\_  
 Address 1: \_\_\_\_\_  
 Address 2: \_\_\_\_\_  
 City: \_\_\_\_\_ State: \_\_\_\_\_ Zip: \_\_\_\_\_ + \_\_\_\_\_  
 Contact Person: \_\_\_\_\_  
 Phone: ( \_\_\_\_\_ ) \_\_\_\_\_  
 Contact Person Email: \_\_\_\_\_  
 Field Contact Person: \_\_\_\_\_  
 Field Contact Person Phone: ( \_\_\_\_\_ ) \_\_\_\_\_

API No. 15- \_\_\_\_\_  
 Spot Description: \_\_\_\_\_  
 \_\_\_\_\_ - \_\_\_\_\_ - \_\_\_\_\_ - \_\_\_\_\_ Sec. \_\_\_\_\_ Twp. \_\_\_\_\_ S. R. \_\_\_\_\_  E  W  
 \_\_\_\_\_ feet from  N /  S Line of Section  
 \_\_\_\_\_ feet from  E /  W Line of Section  
 GPS Location: Lat: \_\_\_\_\_, Long: \_\_\_\_\_  
(e.g. xx.xxxxx) (e.g. -xxx.xxxxx)  
 Datum:  NAD27  NAD83  WGS84  
 County: \_\_\_\_\_ Elevation: \_\_\_\_\_  GL  KB  
 Lease Name: \_\_\_\_\_ Well #: \_\_\_\_\_  
 Well Type: (check one)  Oil  Gas  OG  WSW  Other: \_\_\_\_\_  
 SWD Permit #: \_\_\_\_\_  ENHR Permit #: \_\_\_\_\_  
 Gas Storage Permit #: \_\_\_\_\_  
 Spud Date: \_\_\_\_\_ Date Shut-In: \_\_\_\_\_

	Conductor	Surface	Production	Intermediate	Liner	Tubing
Size						
Setting Depth						
Amount of Cement						
Top of Cement						
Bottom of Cement						

Casing Fluid Level from Surface: \_\_\_\_\_ How Determined? \_\_\_\_\_ Date: \_\_\_\_\_  
 Casing Squeeze(s): \_\_\_\_\_ to \_\_\_\_\_ w / \_\_\_\_\_ sacks of cement, \_\_\_\_\_ to \_\_\_\_\_ w / \_\_\_\_\_ sacks of cement. Date: \_\_\_\_\_  
(top) (bottom) (top) (bottom)  
 Do you have a valid Oil & Gas Lease?  Yes  No  
 Depth and Type:  Junk in Hole at \_\_\_\_\_  Tools in Hole at \_\_\_\_\_ Casing Leaks:  Yes  No Depth of casing leak(s): \_\_\_\_\_  
(depth) (depth)  
 Type Completion:  ALT. I  ALT. II Depth of:  DV Tool: \_\_\_\_\_ w / \_\_\_\_\_ sacks of cement  Port Collar: \_\_\_\_\_ w / \_\_\_\_\_ sack of cement  
(depth) (depth)  
 Packer Type: \_\_\_\_\_ Size: \_\_\_\_\_ Inch Set at: \_\_\_\_\_ Feet  
 Total Depth: \_\_\_\_\_ Plug Back Depth: \_\_\_\_\_ Plug Back Method: \_\_\_\_\_

**Geological Data:**

Formation Name	Formation Top	Formation Base	Completion Information
1. _____	At: _____	to _____ Feet	Perforation Interval _____ to _____ Feet or Open Hole Interval _____ to _____ Feet
2. _____	At: _____	to _____ Feet	Perforation Interval _____ to _____ Feet or Open Hole Interval _____ to _____ Feet

UNDER PENALTY OF PERJURY I HEREBY ATTEST THAT THE INFORMATION CONTAINED HEREIN IS TRUE AND CORRECT TO THE BEST OF MY KNOWLEDGE

Submitted Electronically

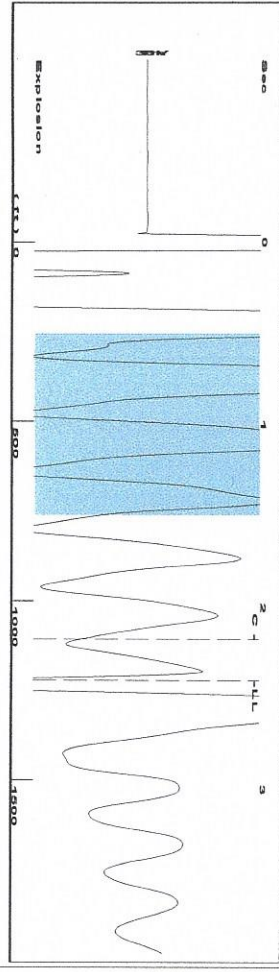
<b>Do NOT Write in This Space - KCC USE ONLY</b>	Date Tested: _____	Results: _____	Date Plugged: _____	Date Repaired: _____	Date Put Back in Service: _____
	Review Completed by: _____ Comments: _____				
TA Approved: <input type="checkbox"/> Yes <input type="checkbox"/> Denied Date: _____					

Mail to the Appropriate KCC Conservation Office:

	KCC District Office #1 - 210 E. Frontview, Suite A, Dodge City, KS 67801	Phone 620.682.7933
	KCC District Office #2 - 3450 N. Rock Road, Building 600, Suite 601, Wichita, KS 67226	Phone 316.337.7400
	KCC District Office #3 - 137 E. 21st St., Chanute, KS 66720	Phone 620.902.6450
	KCC District Office #4 - 2301 E. 13th Street, Hays, KS 67601-2651	Phone 785.261.6250

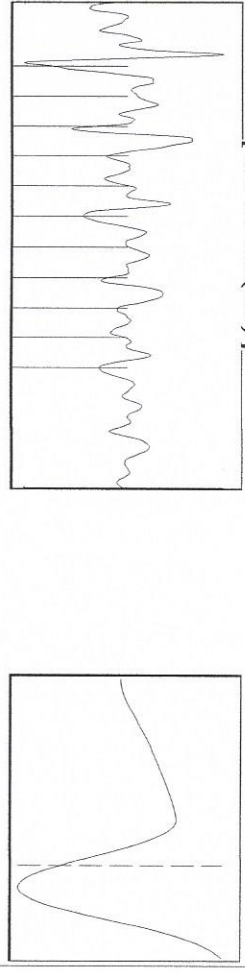
*Shot @ 3:00 PM SR*

Group: Liberal TAD Wells Well: Powell D-1 (acquired on: 11/05/18 13:32:12)



Filter Type High Pass  
Manual Acoustic Velo 1022.58 ft/s  
Automatic Collar Count Yes  
Manual JTS/sec 16.129  
Time 2.402 sec  
Joints 38.5642 Jts  
Depth 1222.49 ft

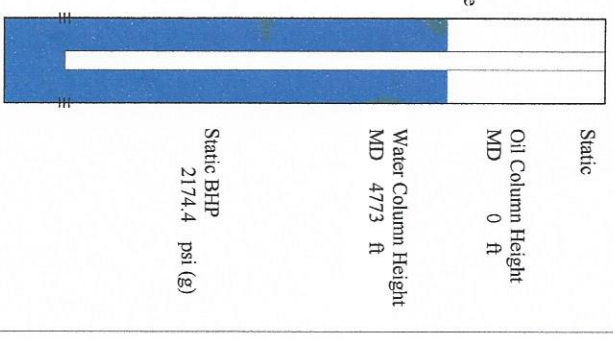
[ 0.5 to 1.5 (Sec) ]



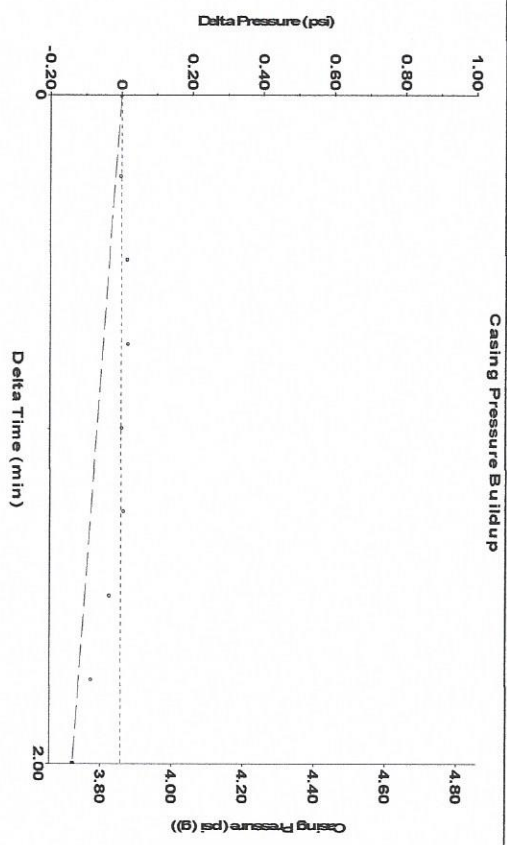
Analysis Method: Automatic

Group: Liberal TAD Wells Well: Powell D-1 (acquired on: 11/05/18 13:32:12)

Production	Potential	Casing Pressure	Static
Current	BBL/D	3.9 psi (g)	Oil Column Height
Oil	BBL/D	-0.134 psi	MD 0 ft
Water	Mscf/D	2.00 min	Water Column Height
Gas	Mscf/D	Gas/Liquid Interface Pressure	MD 4773 ft
IPR Method	Vogel	4.6 psi (g)	
PBHP/SBHP			
Production Efficiency	0.0		
Oil 40 deg API		Liquid Level Depth	
Water 1.05 Sp.Gr:H2O		1222.49 ft	
Gas 0.95 Sp.Gr:AIR		Pump Intake Depth	
Acoustic Velocity	1017.89 ft/s	5995.00 ft	
		Formation Depth	
		5995.00 ft	

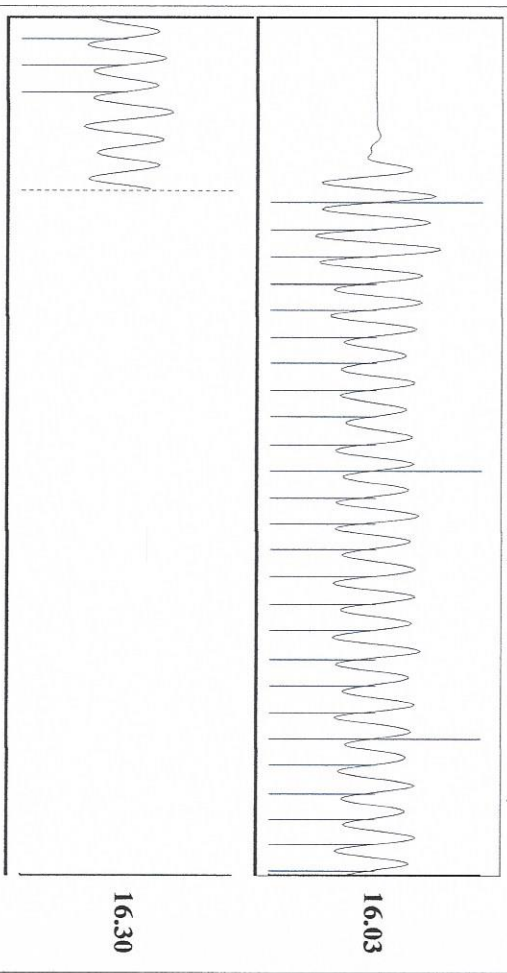


Group: Liberal TAD Wells Well: Powell D-1 (acquired on: 11/05/18 13:32:12)



Change in Pressure -0.13 psi  
Change in Time 2.00 min  
PT11249  
Range  
0 - ? psi

Group: Liberal TAD Wells Well: Powell D-1 (acquired on: 11/05/18 13:32:12)



Acoustic Velocity 1017.89 ft/s  
Joints Per Second 16.055 Jts/sec  
Depth to liquid level 1222.49 ft  
Automatic Collar Count Yes  
Joints counted 28  
Filter Width 38.5642  
Time to 1st Collar 14.129  
18.129  
2.172

# STATE OF KANSAS

CORPORATION COMMISSION  
CONSERVATION DIVISION  
DISTRICT No. 1  
210 E. FRONTVIEW, SUITE A  
DODGE CITY, KS 67801



PHONE: 620-682-7933  
<http://kcc.ks.gov/>

GOVERNOR JEFF COLYER, M.D.

SHARI FEIST ALBRECHT, CHAIR | JAY SCOTT EMLER, COMMISSIONER | DWIGHT D. KEEN, COMMISSIONER

November 08, 2018

Katheirne McClurkan  
Merit Energy Company, LLC  
13727 Noel Road, Suite 1200  
Dallas, TX 75240

Re: Temporary Abandonment  
API 15-175-20429-00-00  
Powell D 1  
NW/4 Sec.26-34S-34W  
Seward County, Kansas

Dear Katheirne McClurkan:

Your application for Temporary Abandonment (TA) for the above-listed well is denied for the following reasons(s):

### **Shut-in Over 10 years**

Pursuant to K.A.R. 82-3-111, the well must be plugged or returned to service by December 06, 2018.

If you wish to instead file an application for an exception to the 10-year limitation of K.A.R. 82-3-111, demonstrating why it is necessary to TA the well for more than 10 years, then you must file the application for an exception by December 06, 2018.

**This deadline does NOT override any compliance deadline given to you in any Commission Order.**

You may contact me if you have any questions.

Sincerely,  
Michael Maier  
KCC DISTRICT 1